

# Wi-Fi Outdoor Smart Plug

• WF96S •

## Meet your new smart Plug !



For outdoor use  
IP65 Rated

### (A) Manual / Program button

Single press: manually turn on/off your device.

### (B) Smart Outlet

This is your smart outlet that will be included in your smart home

## Introduction

The EVA LOGIK WF96 is an enabled 15A outdoor smart plug designed for use for most residential lighting and motor applications. It's compatible with LED, halogen, incandescent, xenon, fluorescent and compact fluorescent bulbs. Works with Amazon Alexa, Google Assistant and IFTTT.

Overload protection and no hub required.

One smart outlet, you can use free App, or voice control by Alexa and Google Assistant to operate your devices in your home.

Total load capacity for both outlets is 15A(1800W) Resistive.

## Specifications

Model: WF96S

Power: 120V AC, 60Hz

Loading :15 Amp Max Always On Outlet

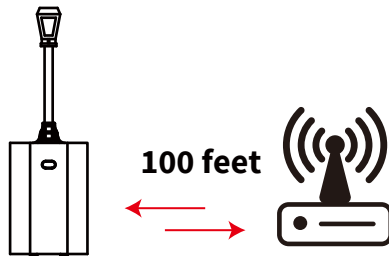
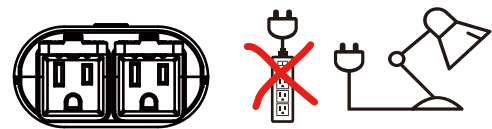
Operating Temperature Range: -4-122° F (-20-50° C)

Wireless Frequency: 2.4GHz

Wireless Standard: IEEE802.11b/g/n

Plug the light you want to control into the Smart plug controlled outlet.

**NOTE:** Plug directly into the outlet, do not use with extension cords



### Note:

Your device may need to be within 100 feet of the controller to be included. If so, include the device to the network within 10 feet of the controller and relocate it to the desired position in your home. Be sure to refresh the network if the device is included in this manner.



QR code



Smart Life

1. Please scan the QR code to download the application "Smart Life".
2. If you cannot download Smart Life app, please search "Smart Life" on Google Play (for Android phone) or Apple Store (for iOS phone) to download.

After you download the Smart Life App and register a new account, please follow the instructions below to set up your smart switch.

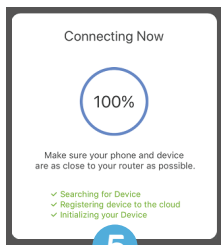
**1** Tap '+' to add a device in your app (Our products only support 2.4GHz Wi-Fi network.)

**2** Select Electrical /Electrical Outlet

**3** Hold the plug button for 10s. The LED indicator blinks rapidly.

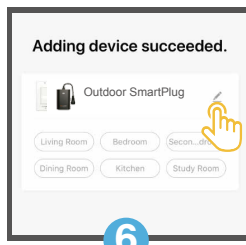
**4** Enter the Wi-Fi Password (Your phone should have connected to the same Wi-Fi first).

• White LED indicator



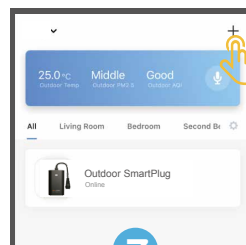
5

Wait for the app to connect to your WIFI until it's 100%



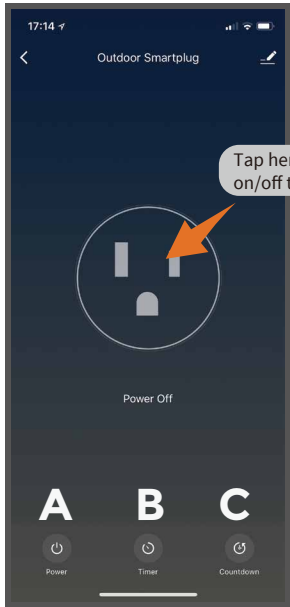
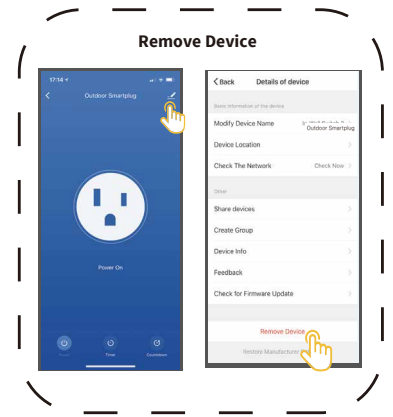
6

Edit the name of your new smart plug!

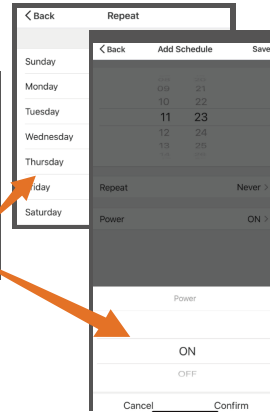
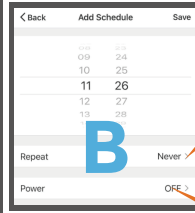


7

Click the new smart plug you just added and you can start using it now.



Tap here to turn on/off the PLUG



- Tap "A" to turn on/off the PLGU.
- Tap "B" to set a timer to the switch.
- Tap "C" to set a Countdown time to the switch.

**Note:**

- 1) Our products only support 2.4GHz Wi-Fi network.
- 2) Please operate quickly when the LED indicator blinks rapidly.
- 3) When indicator flash enters the network, complete standard operation within the 30s.

**FCC warning:**

This device complies with Part 15 of the FCC Rules. Operation is subject to the following two conditions:

- (1) this device may not cause harmful interference, and
  - (2) this device must accept any interference received, including interference that may cause undesired operation.
- changes or modifications not expressly approved by the party responsible for compliance could void the user's authority to operate the equipment.

**NOTE:** This equipment has been tested and found to comply with the limits for a Class B digital device, pursuant to Part 15 of the FCC Rules. These limits are designed to provide reasonable protection against harmful interference in a residential installation. This equipment generates, uses and can radiate radio frequency energy and, if not installed and used in accordance with the instructions, may cause harmful interference to radio communications. However, there is no guarantee that interference will not occur in a particular installation. If this equipment does cause harmful interference to radio or television reception, which can be determined by turning the equipment off and on, the user is encouraged to try to correct the interference by one or more of the following measures:

- Reorient or relocate the receiving antenna.
- Increase the separation between the equipment and receiver.
- Connect the equipment into an outlet on a circuit different from that to which the receiver is connected.
- Consult the dealer or an experienced radio/TV technician for help.

**FCC Radiation Exposure Statement:**

This equipment complies with FCC radiation exposure limits set forth for an uncontrolled environment.

This transmitter must not be co-located or operating in conjunction with any other antenna or transmitter.

This equipment should be installed and operated with minimum distance 20cm between the radiator & your body.

3. The smart switch can be also used with **Amazon Echo** and **Google Home**. Please scan the QR code below and follow the instructions if you have any trouble pairing with them.



Amazon-Echo



Google-Home

**CAUTION - PLEASE READ!**

This device (WF96S) is intended for installation in accordance with the National Electric Code and local regulations in the United States, or the Canadian Electrical Code and local regulations in Canada. If you are unsure or uncomfortable about performing this installation consult a qualified electrician.

**MEDICAL EQUIPMENT**

Please DO NOT use this plug to control Medical or Life Support equipment. This device should never be used to control the On/Off status of Medical and/or Life Support equipment.

**OTHER WARNINGS**

Risk of Fire  
Risk of Electrical Shock  
Risk of Burns