



Report No.: PTC22041806801E-FC01

FCC TEST REPORT

FCC ID: 2AQURMP22RTX96

Product : RF remote
Model Name : MP22R-TX96
Brand : Ministon
Report No. : PTC22041806801E-FC01

Prepared for

NIE-TECH Co., Ltd

Jinlian commercial center 9001, Jinxiu road No.2, Changan Town,Dongguan City, GuangDongProv.,
CHINA

Prepared by

Precise Testing & Certification (Guangdong) Co., Ltd.

Building 1, No. 6, Tongxin Road, Dongcheng Street, Dongguan, Guangdong, China



TEST RESULT CERTIFICATION

Applicant's name : NIE-TECH Co., Ltd
Address : Jinlian commercial center 9001, Jinxiu road No.2, Changan Town, Dongguan City, Guangdong Prov., CHINA
Manufacture's name : NIE-TECH Co., Ltd
Address : Jinlian commercial center 9001, Jinxiu road No.2, Changan Town, Dongguan City, Guangdong Prov., CHINA
Product : RF remote
Model : MP22R-TX96
Standards : FCC CFR47 Part 15 Section 15.231
Test procedure : ANSI C63.10:2013
Test Date : May. 31, 2022 to Jul. 13, 2022
Date of Issue : Jul. 13, 2022
Test Result : Pass

This device described above has been tested by PTC, and the test results show that the equipment under test (EUT) is in compliance with the FCC requirements. And it is applicable only to the tested sample identified in the report.

This report shall not be reproduced except in full, without the written approval of PTC, this document may be altered or revised by PTC, personal only, and shall be noted in the revision of the document.

Testing Engineer:

A handwritten signature in black ink that reads "Simon Pu".

Simon Pu/ Engineer

Technical Manager:

A handwritten signature in black ink that reads "Ronnie Liu".

Ronnie Liu/ Manager



Contents

	Page
2 TEST SUMMARY	4
3 GENERAL INFORMATION	5
3.1 GENERAL DESCRIPTION OF E.U.T.	5
3.2 TEST MODE	5
3.3 TEST SITE	5
4 EQUIPMENT DURING TEST	6
4.1 EQUIPMENTS LIST	6
4.2 MEASUREMENT UNCERTAINTY	6
5 CONDUCTED EMISSION	7
5.1 E.U.T. OPERATION	7
5.2 EUT SETUP	7
5.3 TEST SET-UP (BLOCK DIAGRAM OF CONFIGURATION)	8
5.4 MEASUREMENT PROCEDURE	8
5.5 CONDUCTED EMISSION LIMIT	8
5.6 MEASUREMENT DESCRIPTION	8
5.7 CONDUCTED EMISSION TEST RESULT	8
6 PERIODIC OPERATION	9
7 RADIATED SPURIOUS EMISSIONS	13
7.1 EUT OPERATION	13
7.2 TEST SETUP	14
7.3 SPECTRUM ANALYZER SETUP	15
7.4 TEST PROCEDURE	16
7.5 SUMMARY OF TEST RESULTS	17
8 20DB BANDWIDTH MEASUREMENT	19
8.1 TEST PROCEDURE	19
8.2 TEST RESULT	19
9 ANTENNA REQUIREMENT	20
10 TEST SETUP	21
11 EUT PHOTOS	22



2 Test Summary

Test Items	Test Requirement	Result
Conducted Emissions	15.207	N/A
Radiated Emission	15.231(b) 15.209 15.205(a)	PASS
Periodic Operation	15.231 (a) (1)	PASS
Outside of Band Emission	15.231(b) 15.205 15.209	PASS
20dB Bandwidth	15.231(c)	PASS
Antenna Requirement	15.203	PASS
Remark: N/A: Not Applicable		



3 General Information

3.1 General Description of E.U.T.

Product Name : RF remote
Model Name : MP22R-TX96
Operation Frequency: : 433.92MHz
Antenna installation: : PCB Antenna
Antenna Gain: : 1 dBi
Type of Modulation : GFSK
The lowest oscillator : 433.92MHz
Power supply : Li-MnO2 Button Cell : CR2032 DC 3V,210mAh

3.2 Test Mode

All test mode(s) and condition(s) mentioned were considered and evaluated respectively by performing full tests, the worst data were recorded and reported.

Modulation	Test mode	Low channel	Middle channel	High channel
GFSK	continuously Transmitting	433.92MHz	\	\

3.3 Test Site

Precise Testing & Certification Co., Ltd
Address: Building 1, No. 6, Tongxin Road, Dongcheng Street, Dongguan, Guangdong, China
A2LA Certificate No.: 4408.01
FCC Registration Number: 790290
FCC Designation Number : CN1219
IC Registration Number: 12191A
CAB identifier: CN0080



4 Equipment During Test

4.1 Equipments List

Radiated Emissions							
Item	Kind of Equipment	Manufacturer	Type No.	Serial No.	Last calibration	Calibrated until	Calibration period
1	EMI Test Receiver	Rohde & Schwarz	ESCI	101417	July 15, 2021	July 14, 2022	1 year
2	EMC Analyzer (9k~26.5GHz)	Agilent	E4407B	MY45109572	Aug.04, 2021	Aug.03, 2022	1 year
3	Trilog Broadband Antenna	SCHWARZBECK	VULB9160	9160-3355	July 15, 2021	July 14, 2022	1 year
4	Amplifier	EM	EM-30180	060538	July 15, 2021	July 14, 2022	1 year
5	Horn Antenna	SCHWARZBECK	BBHA9120D	9120D-1246	July 15, 2021	July 14, 2022	1 year
6	Coaxial Cable(below 1GHz)	LARGE	CALB1	-	July 15, 2021	July 14, 2022	1 year
7	Coaxial Cable(above 1GHz)	LARGE	CALB2	-	July 15, 2021	July 14, 2022	1 year
8	Loop Antenna	Schwarzbeck	FMZB 1519	012	9 KHz - 30MHz	Aug. 21, 2022	1 year

4.2 Measurement Uncertainty

Parameter	Uncertainty
RF output power, conducted	±1.0dB
Power Spectral Density, conducted	±2.2dB
Radio Frequency	± 1 x 10 ⁻⁶
Bandwidth	± 1.5 x 10 ⁻⁶
Time	±2%
Duty Cycle	±2%
Temperature	±1°C
Humidity	±5%
DC and low frequency voltages	±3%
Conducted Emissions (150kHz~30MHz)	±3.64dB
Radiated Emission(9kHz~30MHz)	±3.15dB
Radiated Emission(30MHz~1GHz)	±5.03dB
Radiated Emission(1GHz~25GHz)	±4.74dB

5 Conducted Emission

Test Requirement: : FCC CFR 47 Part 15 Section 15.207
Test Method : ANSI C63.10: 2013
Test Result : PASS
Frequency Range : 150kHz to 30MHz
Class/Severity : Class B

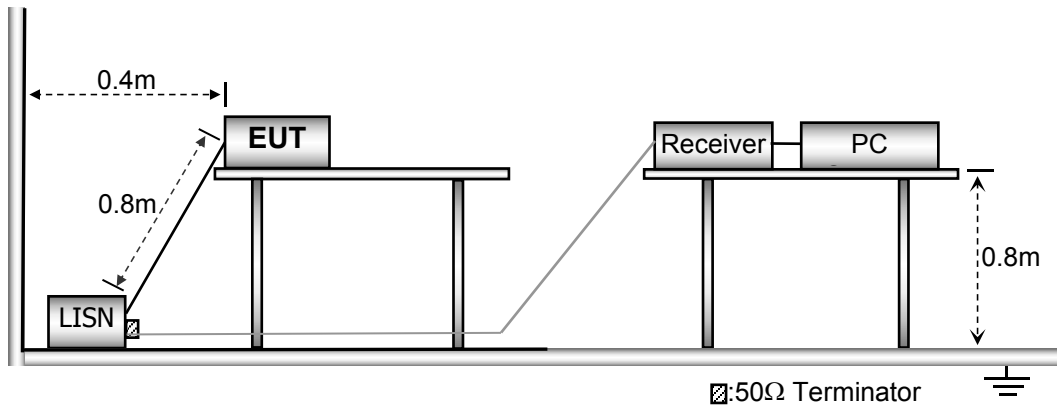
5.1 E.U.T. Operation

Operating Environment :

Temperature : 23.9 °C
Humidity : 51.4 % RH
Atmospheric Pressure : 101.21kPa

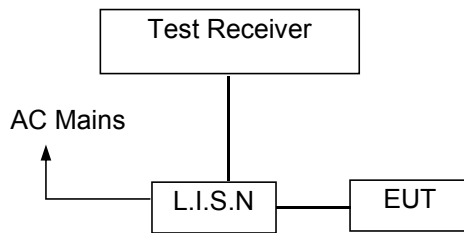
5.2 EUT Setup

The conducted emission tests were performed using the setup accordance with the ANSI C63.10:2013.





5.3 Test SET-UP (Block Diagram of Configuration)



5.4 Measurement Procedure

1. The EUT was placed on a table, which is 0.8m above ground plane.
2. Maximum procedure was performed on the six highest emissions to ensure EUT compliance.
3. Repeat above procedures until all frequency measured was complete.

5.5 Conducted Emission Limit

Conducted Emission

Frequency(MHz)	Quasi-peak	Average
0.15-0.5	66-56	56-46
0.5-5.0	56	46
5.0-30.0	60	50

Note:

1. The lower limit shall apply at the transition frequencies
2. The limit decreases in line with the logarithm of the frequency in the range of 0.15 to 0.50MHz.

5.6 Measurement Description

The maximised peak emissions from the EUT was scanned and measured for both the Live and Neutral Lines. Quasi-peak & average measurements were performed if peak emissions were within 6dB of the average limit line.

5.7 Conducted Emission Test Result

N/A

Note: Powered by non-rechargeable lithium cell.



6 Periodic Operation

The duty cycle was determined by the following equation:

To calculate the actual field intensity, the duty cycle correction factor in decibel is needed for later use and can be obtained from following conversion

Duty Cycle(%)=Total On interval in a complete pulse train/ Length of a complete pulse train * %

Duty Cycle Correction Factor (dB)=20 * Log₁₀(Duty Cycle(%))

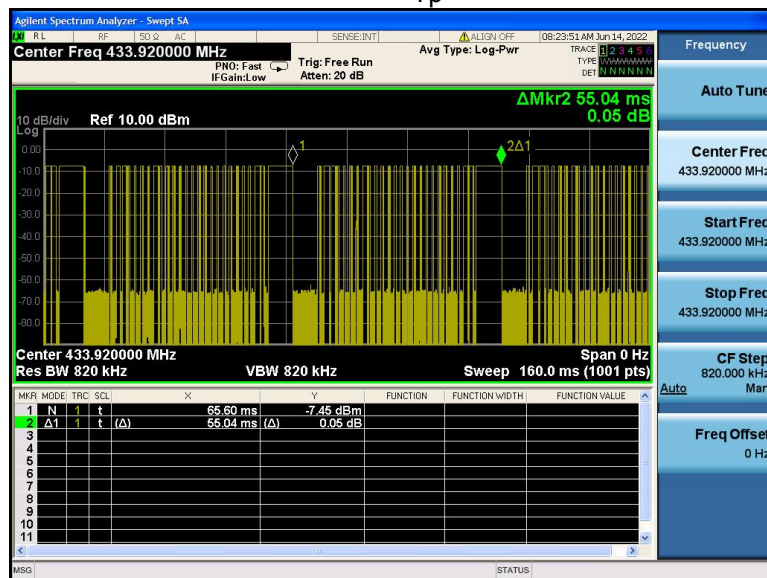
Total transmission time(ms)	6.660*1+4*4.29+0.406*21=32.346
Length of a complete transmission period(ms)	55.04
Duty Cycle(%)	58.77
Duty Cycle Correction Factor(dB)	-4.6

Refer to the duty cycle plot (as below), This device meets the FCC requirement.

Length of a complete pulse train:

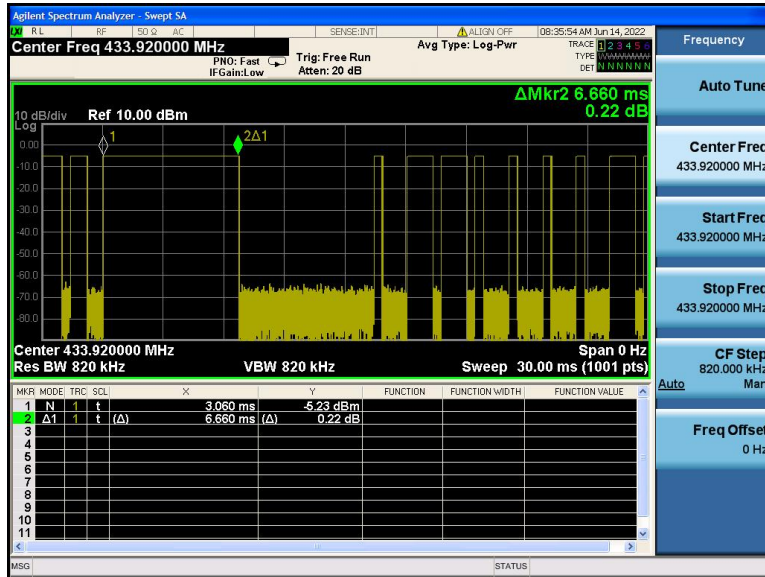
Remark: FCC part15.35(c) required that a complete pulse train is more than 0.1 seconds, the measured field strength shall be determined from the average absolute voltage during a 0.1 second interval during which the field strength is at its maximum value.

T_p

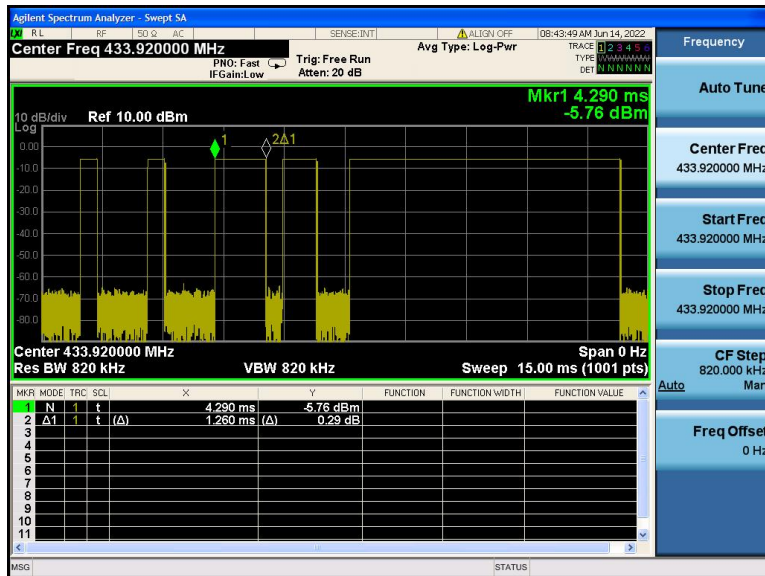




Pulse 1

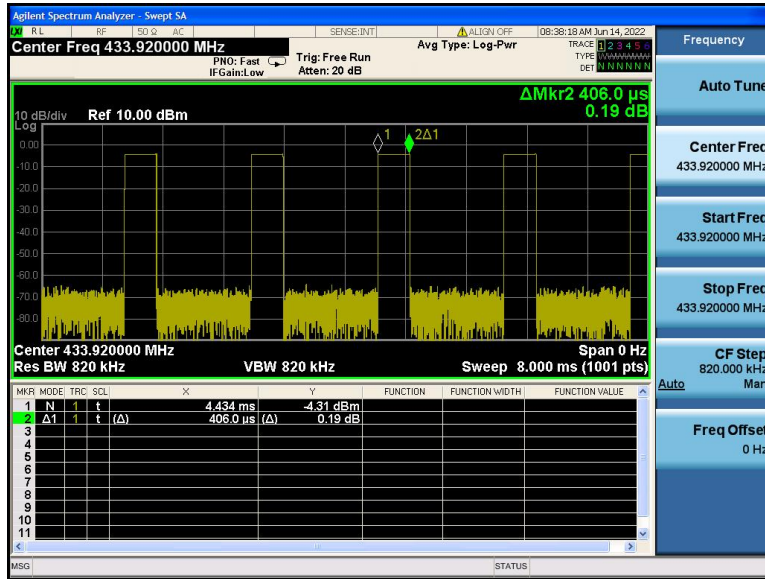


Pulse 2





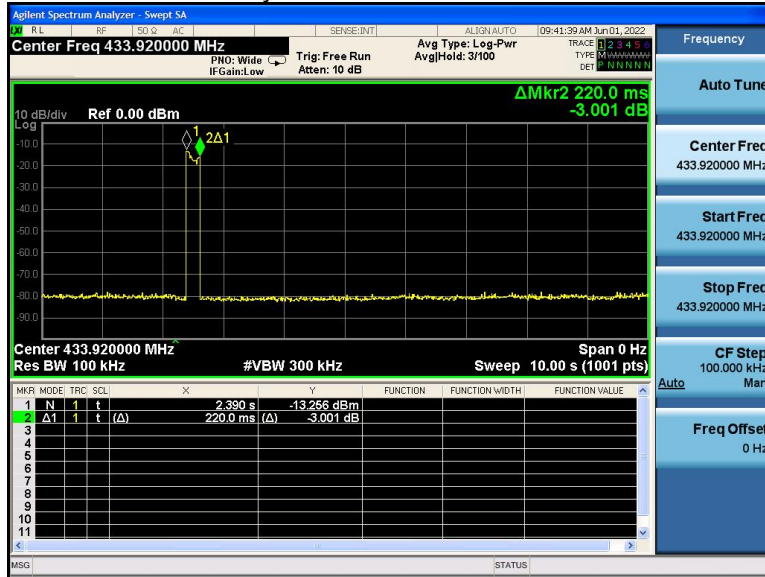
Pulse 3





FCC Part15.231 (a) (1) A manually operated transmitter shall employ a switch that will automatically deactivate the transmitter within not more than 5 seconds of being released.

(2)A transmitter activated automatically shall cease transmission within 5 seconds after activation.





7 Radiated Spurious Emissions

Test Requirement: : FCC CFR47 Part 15 Section 15.231 & 15.207 & 15.205
 Test Method: : ANSI C63.10:2013
 Test Result: : PASS
 Measurement Distance: : 3m
 Limit: : See the follow table

Frequency (MHz)	Field Strength		Field Strength Limit at 3m Measurement Dist	
	uV/m	Distance (m)	uV/m	dBuV/m
0.009 ~ 0.490	2400/F(kHz)	300	10000 * 2400/F(kHz)	20log ^{(2400/F(kHz))} + 80
0.490 ~ 1.705	24000/F(kHz)	30	100 * 24000/F(kHz)	20log ^{(24000/F(kHz))} + 40
1.705 ~ 30	30	30	100 * 30	20log ⁽³⁰⁾ + 40
30 ~ 88	100	3	100	20log ⁽¹⁰⁰⁾
88 ~ 216	150	3	150	20log ⁽¹⁵⁰⁾
216 ~ 960	200	3	200	20log ⁽²⁰⁰⁾
Above 960	500	3	500	20log ⁽⁵⁰⁰⁾

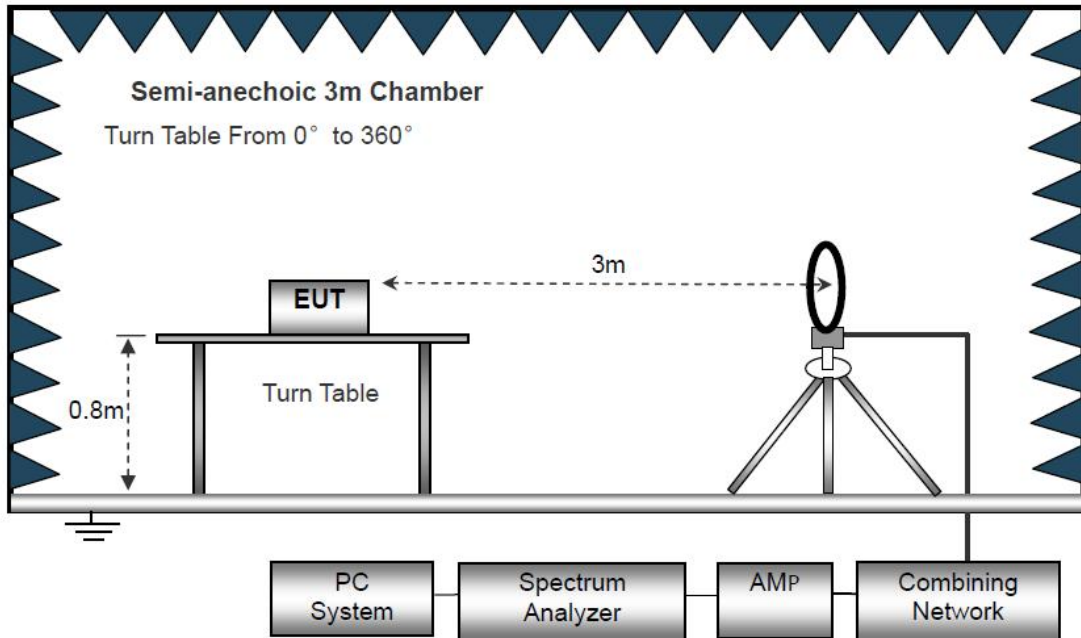
7.1 EUT Operation

Operating Environment :
 Temperature: : 23.5 °C
 Humidity: : 51.1 % RH
 Atmospheric Pressure: : 101.2kPa
 EUT Operation : : Refer to section 3.3

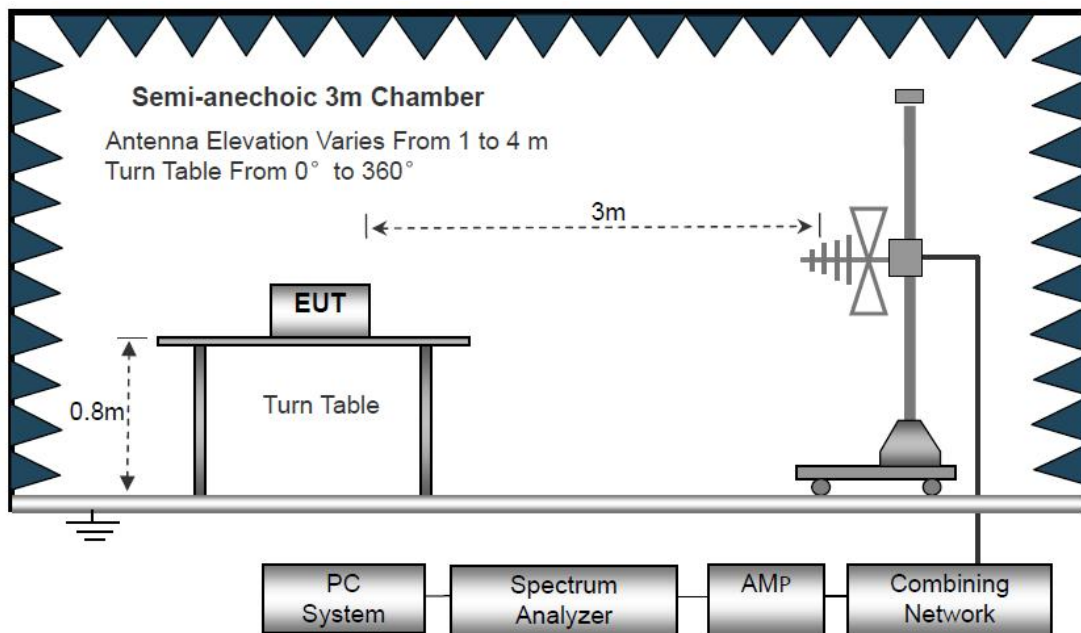
7.2 Test Setup

The radiated emission tests were performed in the 3m Semi- Anechoic Chamber test site

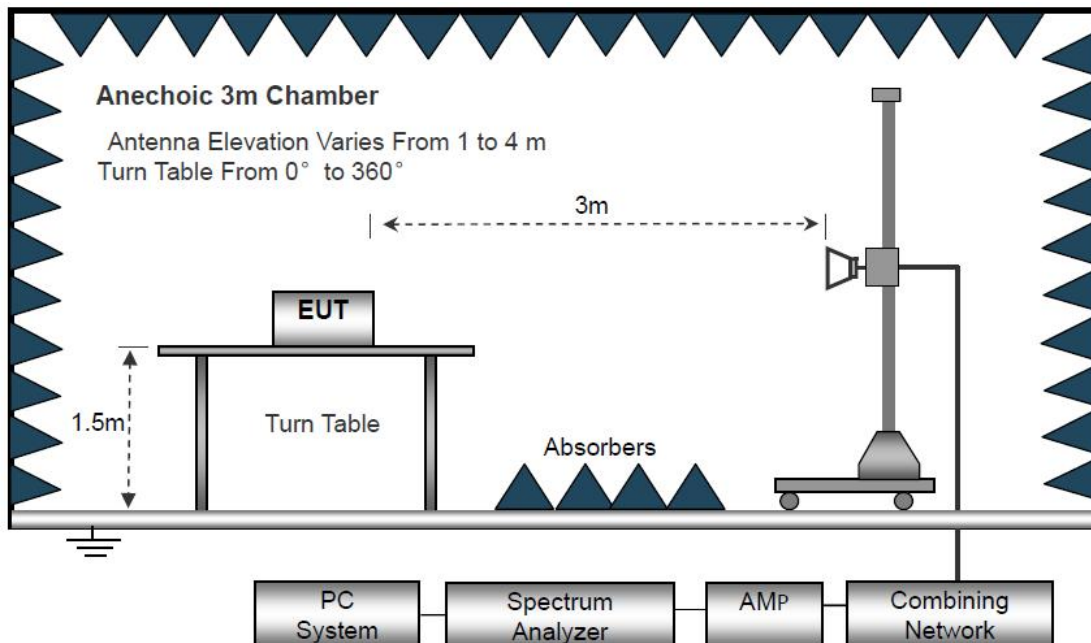
The test setup for emission measurement below 30MHz



The test setup for emission measurement from 30 MHz to 1 GHz.



The test setup for emission measurement above 1 GHz



7.3 Spectrum Analyzer Setup

Below 30MHz

IF Bandwidth	10kHz
Resolution Bandwidth	10kHz
Video Bandwidth	10kHz

30MHz ~ 1GHz

Detector	: PK
Resolution Bandwidth	: 100kHz
Video Bandwidth	: 300kHz
Detector	: QP
Resolution Bandwidth	: 120kHz
Video Bandwidth	: 300kHz

Above 1GHz

Detector	: PK
Resolution Bandwidth	: 1MHz
Video Bandwidth	: 3MHz
Detector	: AV
Resolution Bandwidth	: 1MHz
Video Bandwidth	: 10Hz



7.4 Test Procedure

1. The EUT is placed on a turntable, which is 0.8m or 1.5m above ground plane.
2. The turntable shall be rotated for 360 degrees to determine the position of maximum emission level.
3. EUT is set 3m away from the receiving antenna, which is moved from 1m to 4m to find out the maximum emissions. The spectrum was investigated from the lowest radio frequency signal generated in the device, without going below 9 kHz, up to the tenth harmonic of the highest fundamental frequency or to 40 GHz, whichever is lower.
4. Maximum procedure was performed on the six highest emissions to ensure EUT compliance.
5. And also, each emission was to be maximized by changing the polarization of receiving antenna both horizontal and vertical.
6. Repeat above procedures until the measurements for all frequencies are complete.
7. The radiation measurements are tested under 3-axes(X,Y,Z) position(X denotes lying on the table, Y denotes side stand and Z denotes vertical stand), After pre-test, It was found that the worse radiation emission was get at the X position. So the data shown was the X position only.
8. The test above 1GHz must be use the fully anechoic room, and the test below 1GHz use the half anechoic room



7.5 Summary of Test Results

Test Frequency: Below 30MHz

The lowest oscillator is 16MHz, the test is not applicable

Test Frequency: 30MHz ~ 5GHz

All applicable test modes have been tested with TX mode(433.92MHz)

Frequency	Reading	Detector	Turn table Angle	RX Antenna		Corrected Factor	Corrected Amplitude	FCC Part 15.231/209/205	
				Height	Polar			Limit	Margin
(MHz)	(dBμV)	(PK/QP/Av e)	Degree	(m)	(H/V)	(dB/m)	(dBμV/m)	(dBμV/m)	(dB)
39.32	48.85	QP	111	1.5	H	16.56	32.29	40	-7.71
65.34	47.15	QP	15	1.1	V	15.25	31.90	40	-8.10
86.22	44.58	QP	222	2.3	H	13.79	30.79	40	-9.21
72.58	43.29	QP	217	1.7	V	12.71	30.58	40	-9.42
135.28	43.30	QP	143	2.6	H	7.98	35.32	43.5	-8.18
178.04	43.03	QP	223	1.2	V	6.79	36.24	43.5	-7.26
268.89	50.00	QP	167	1.1	H	12.44	37.56	46	-8.44
244.20	50.44	QP	211	2.4	V	11.69	38.75	46	-7.25
423.22	52.84	QP	300	1.4	H	14.14	38.70	46	-7.30
535.31	53.02	QP	144	2.2	V	15.03	37.99	46	-8.01



Frequency	PK	Turn table Angle	RX Antenna		Duty cycle Factor	AV	FCC Part 15.231/209/205	
			Height	Polar			Limit	Margin
(MHz)	(dB μ V/m)	Degree	(m)	(H/V)	(dB)	(dB μ V/m)	(dB μ V/m)	(dB)
433.92	79.53	285	1.5	H	-4.6	74.93	80.83	-5.9
433.92	74.85	2	2.8	V	-4.6	70.25	80.83	-10.58
867.84	56.99	246	1.6	H	-4.6	52.39	60.83	-8.44
867.84	55.98	7	2.7	V	-4.6	51.38	60.83	-9.45
1301.76	52.38	182	1.6	H	-4.6	47.78	54	-6.22
1301.76	53.64	296	1.1	V	-4.6	49.04	54	-4.96
1735.68	49.21	223	1.7	H	-4.6	44.61	54	-9.39
1735.68	48.23	129	2.6	V	-4.6	43.63	54	-10.37



8 20dB Bandwidth Measurement

- Test Requirement : FCC Part15.231(c)
- Test Method : FCC Part15.231(c)
- Test Mode : Refer to section 3.3
- Limit : The bandwidth of the emission shall be no wider than 0.25% of the center frequency for devices operating above 70 MHz and below 900 MHz. For devices operating above 900 MHz, the emission shall be no wider than 0.5% of the center frequency.

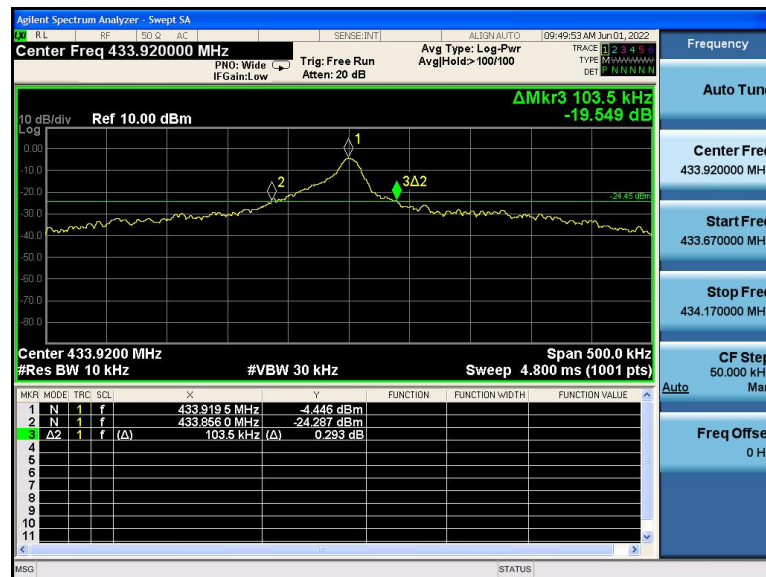
8.1 Test Procedure

1. Remove the antenna from the EUT and then connect a low RF cable from the antenna port to the spectrum;
2. Set the spectrum analyzer: RBW = 10 kHz, VBW = 30kHz,

8.2 Test Result

Test Frequency (MHz)	Bandwidth (kHz)	Limit (kHz)	Result
433.92	103.5	1084.80	pass

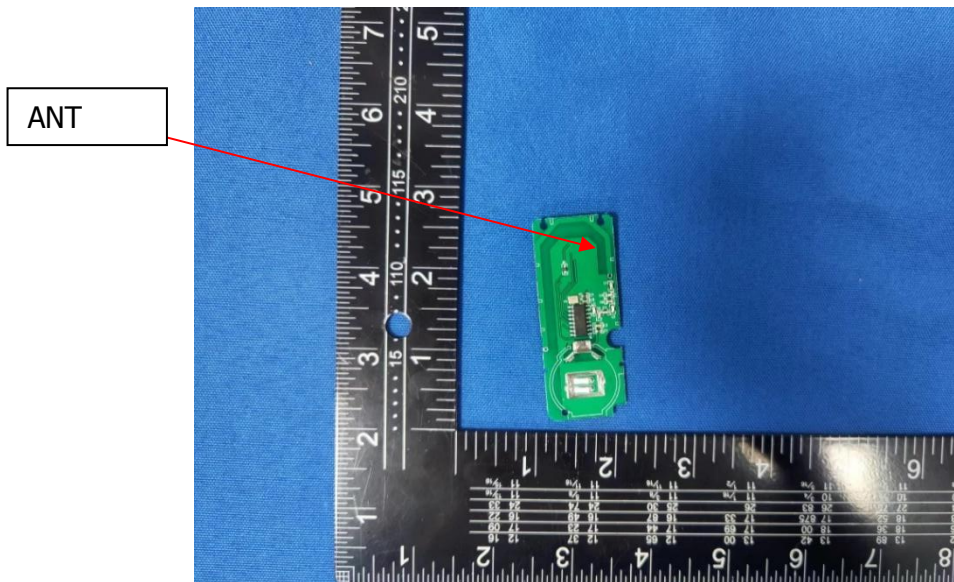
Test plots





9 Antenna Requirement

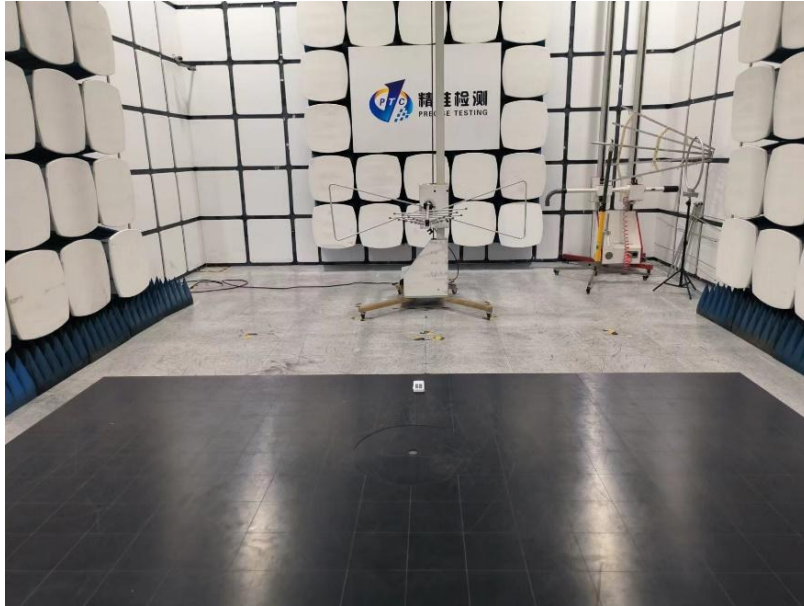
According to the FCC part15.203, a transmitter can only be sold or operated with antennas with which it was approved. This product has an PCB Antenna which meet the requirement of this section.



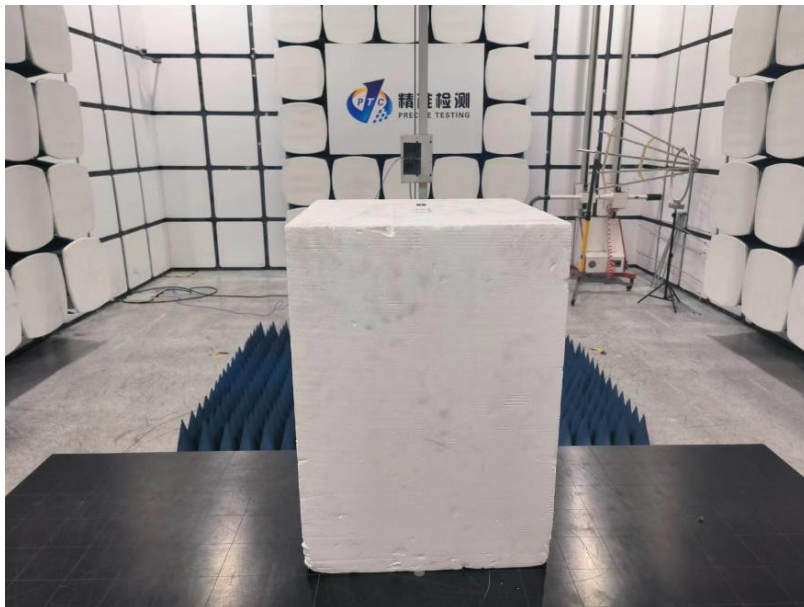


10 Test Setup

Radiated Spurious Emissions
From 30MHz-1000MHz

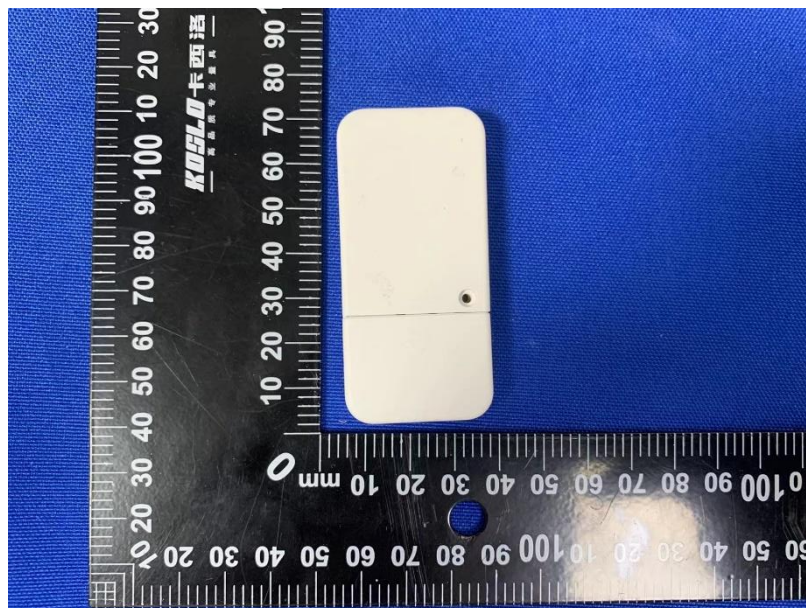


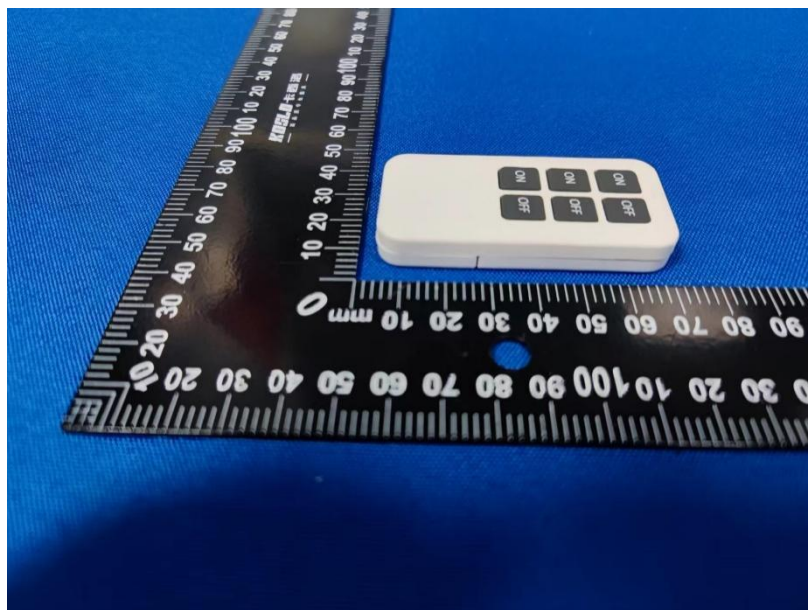
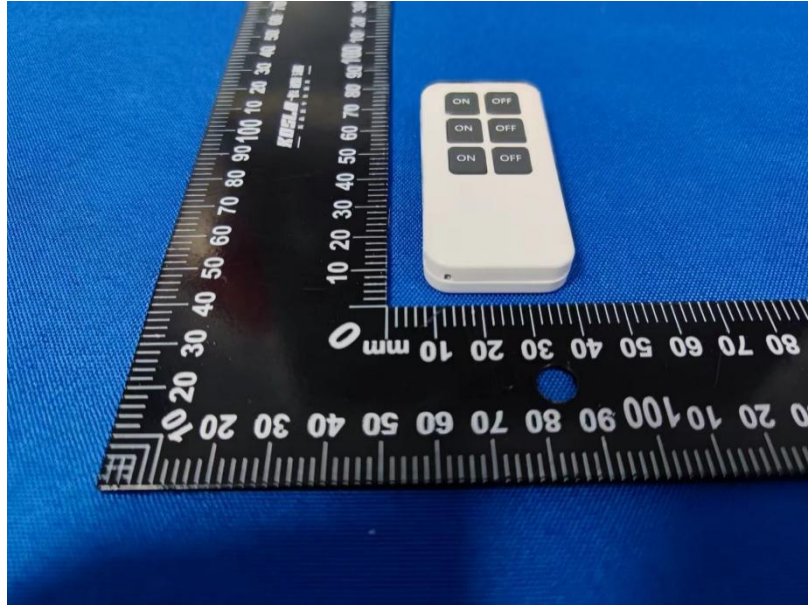
Above 1GHz

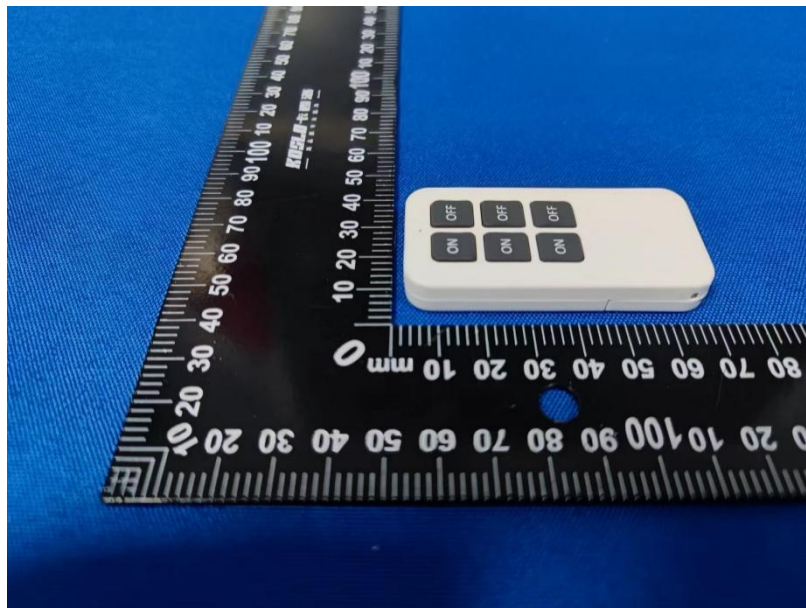
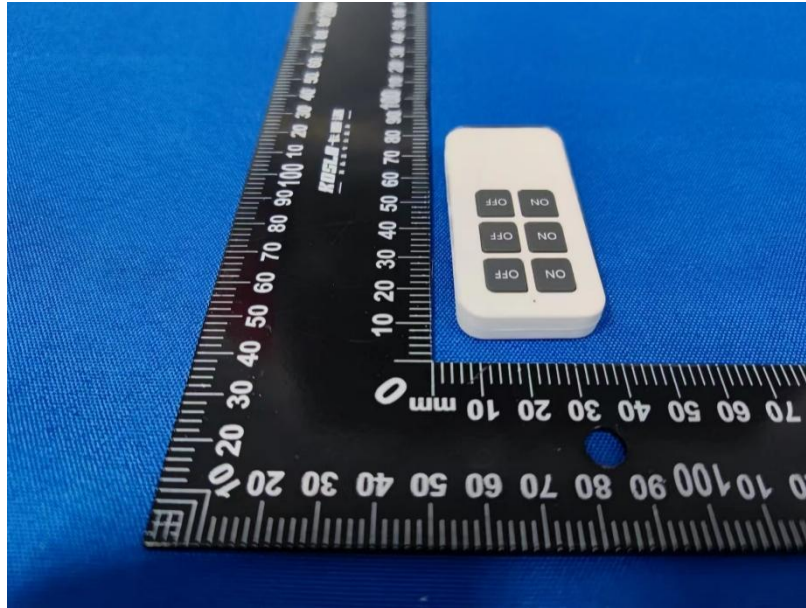


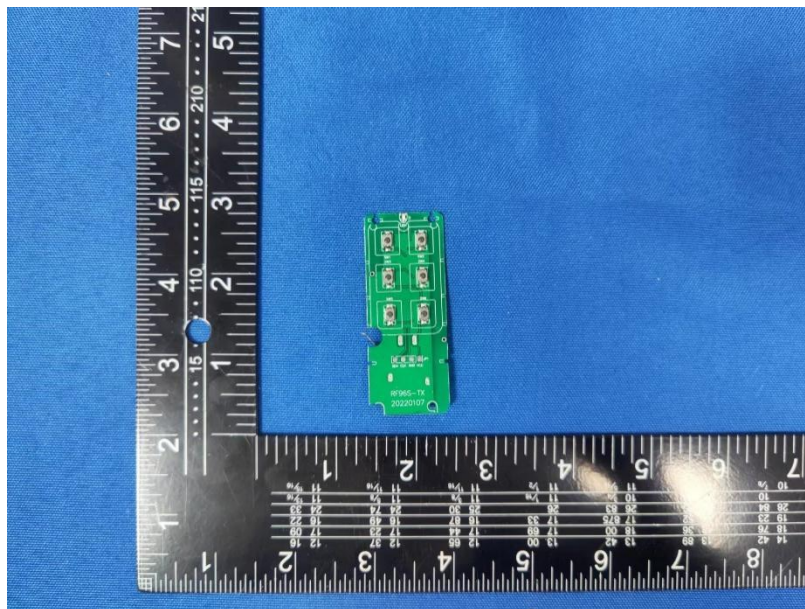
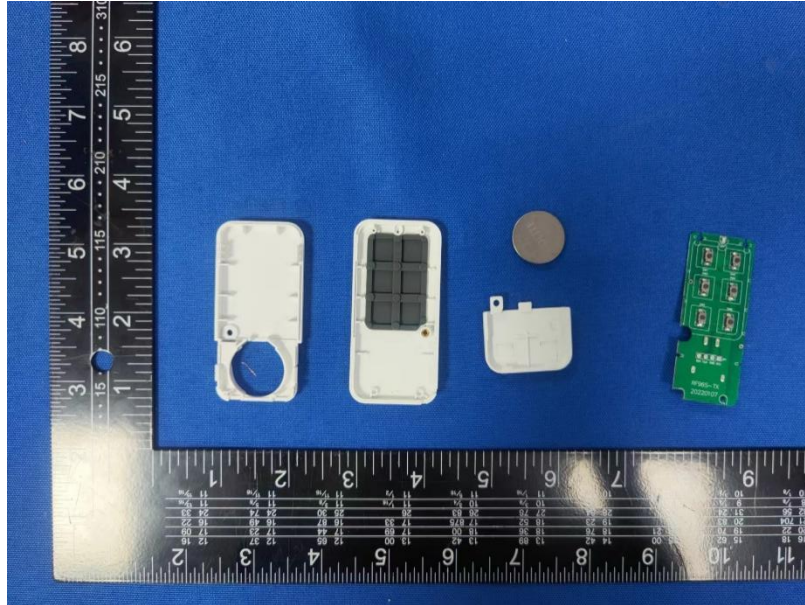


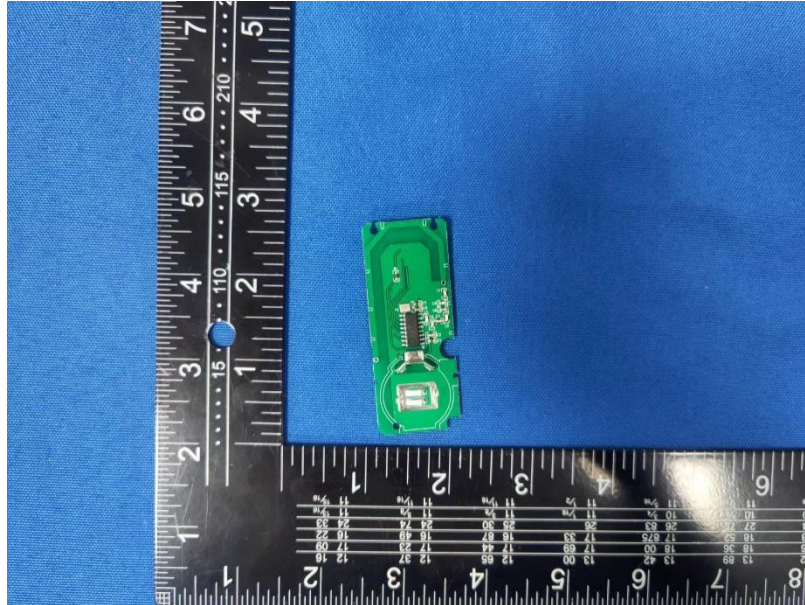
11 EUT Photos











*******THE END REPORT*******