

Antenna
Test Report

BP3L Antenna test report

Version 1.0.0

Date: 2021-06-23

NO: 000000001

Powered by



Intelligence
Inside

| | |
|---------------|-------------------|
| Product Name: | BP3L |
| Antenna Type: | Onboard antenna |
| Writer: | Yingyun Tong |
| Maximum | Gain: 1.09 dBi |
| | Efficiency:44.98% |

Content

| | |
|---|----|
| 1. General Description | 2 |
| 2. Technical Information | 3 |
| 3. Test Standards | 3 |
| 4. Test Item | 4 |
| 5. Test Photo | 4 |
| Appendix A S11/VSWR..... | 5 |
| Appendix B Gain and Efficiency | 6 |
| Appendix C Radiation Pattern(1D and 3D) | 7 |
| Appendix D Test Setup Photo | 9 |
| Appendix E EUT Photo | 10 |

1. General Description

| | |
|---------------|-----------------|
| EUT Name | BP3L Antenna |
| Wireless type | BLE |
| Antenna Type | Onboard antenna |
| Dimensions | Appendix A |

2. Technical Information

| | |
|-----------------|-----------------------|
| Frequency Range | 2402MHz~2480MHz |
| Test Frequency | 2400,2410.....2500MHz |

3. Test Standards

| Identity | Document Title |
|---------------|---|
| IEEE 149-1979 | IEEE Standard Test Procedures for Antennas |

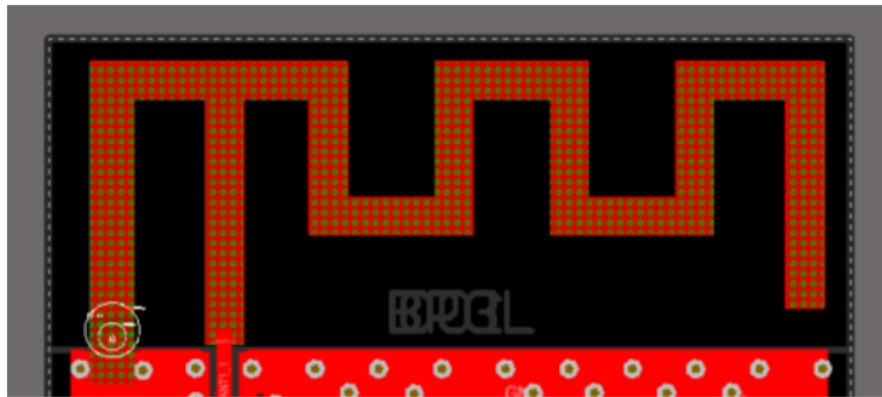
4. Test Item

| Report Section | Description |
|----------------|-------------------------------|
| Appendix B | S11/VSWR |
| Appendix C | Gain and Efficiency |
| Appendix D | Radiation Pattern (1D and 3D) |

5. Test Photo

| Report Section | Description |
|----------------|------------------|
| Appendix E | Test Setup Photo |

Appendix A Antenna Dimension



Appendix B S11/VSWR

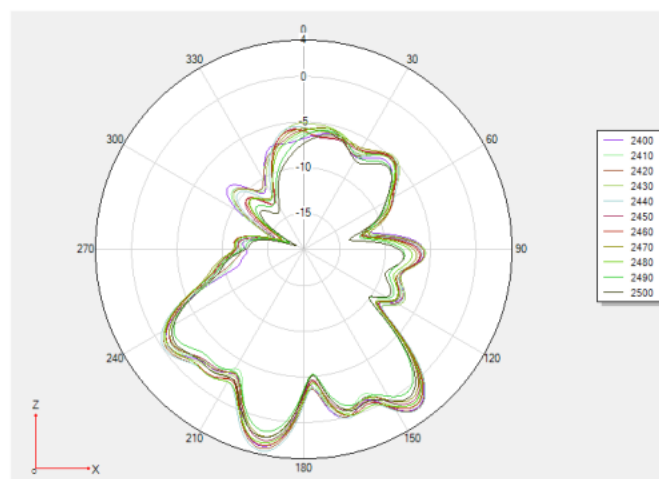
| Frequency (MHz) | 2400 | 2450 | 2500 |
|-----------------|-------|------|-------|
| Return Loss | -16.0 | -9.2 | -5.12 |
| | | | |

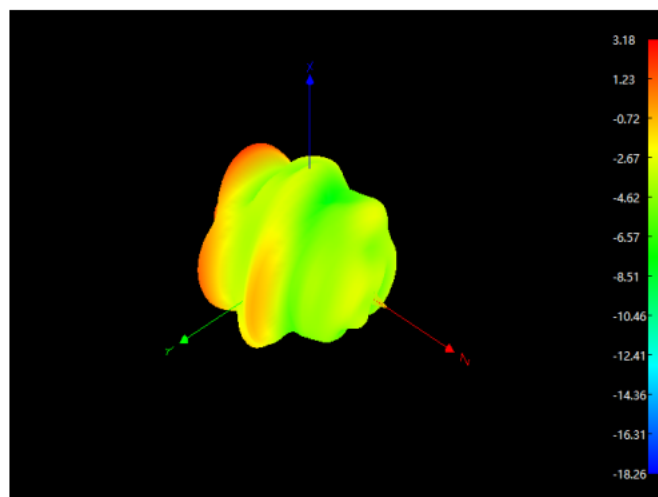
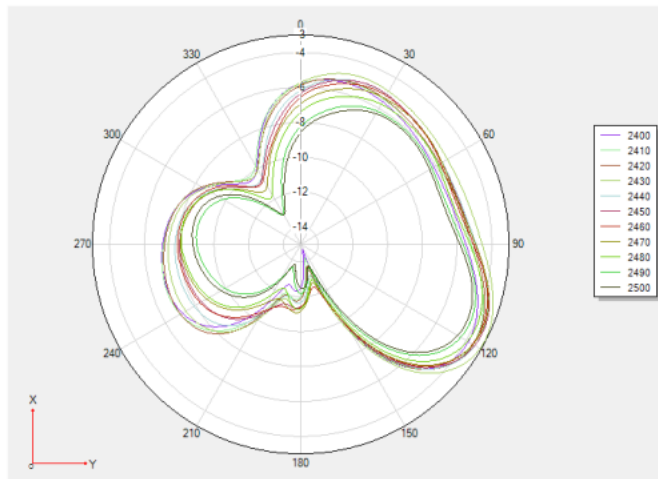
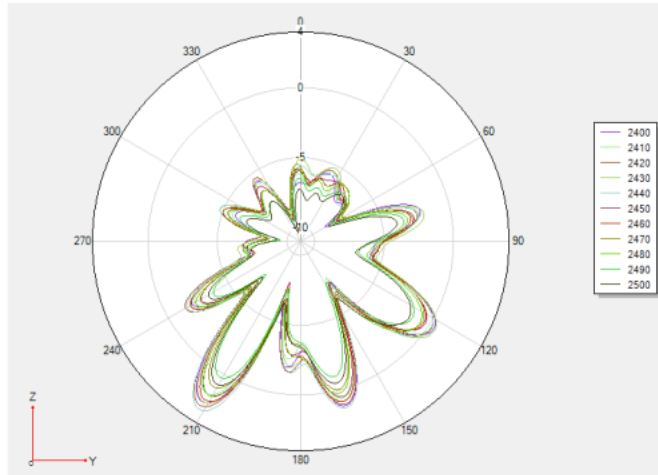
Appendix C Gain and Efficiency

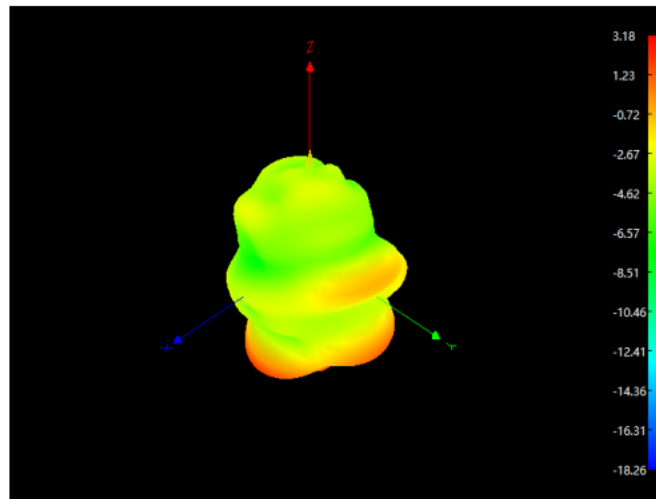
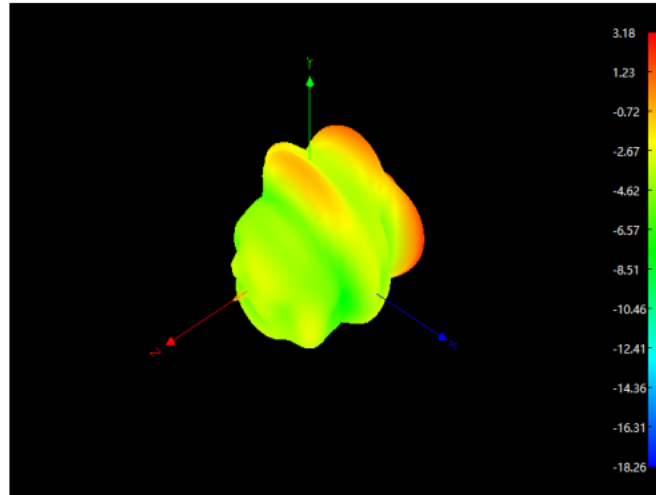
| Frequency (MHz) | Efficiency(%) | Gain (dBi) |
|-----------------|---------------|------------|
| 2400 | 31.26 | -0.07 |
| 2410 | 33.57 | 0.11 |
| 2420 | 34.28 | 0.15 |

| | | |
|------|-------|-------|
| 2430 | 24.12 | 0.06 |
| 2440 | 33.57 | 0.02 |
| 2450 | 32.36 | -0.15 |
| 2460 | 34.83 | 0.34 |
| 2470 | 37.41 | 0.8 |
| 2480 | 41.02 | 1.09 |
| 2490 | 42.27 | 1.28 |
| 2500 | 39.63 | 0.91 |

Appendix D Radiation Pattern(1D and 3D)







Appendix E Test Setup Photo

