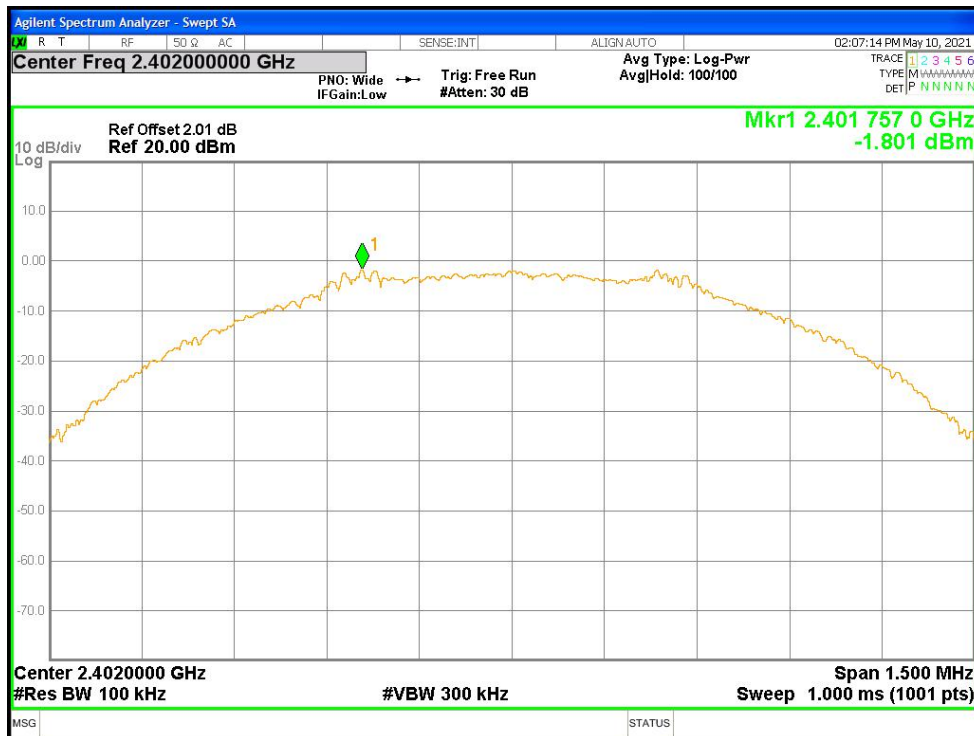


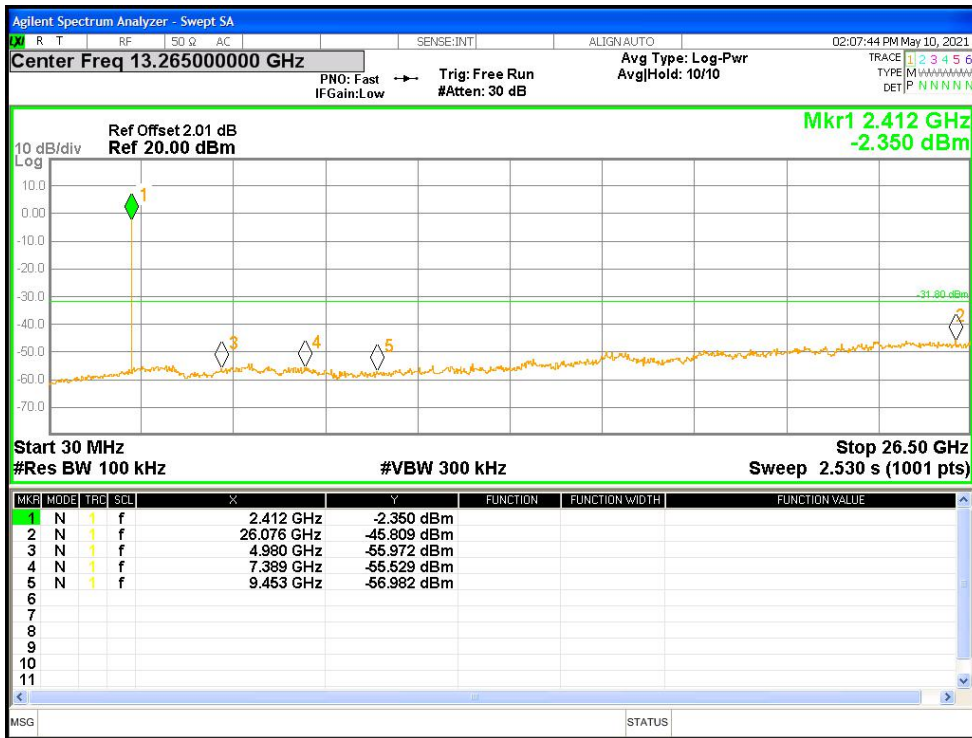
11.6 Conducted RF Spurious Emission

| Condition | Mode | Frequency (MHz) | Antenna | Max Value (dBc) | Limit (dBc) | Verdict |
|-----------|--------|-----------------|---------|-----------------|-------------|---------|
| NVNT | BLE 1M | 2402 | Ant1 | -44 | -30 | Pass |
| NVNT | BLE 1M | 2442 | Ant1 | -43.77 | -30 | Pass |
| NVNT | BLE 1M | 2480 | Ant1 | -43.72 | -30 | Pass |

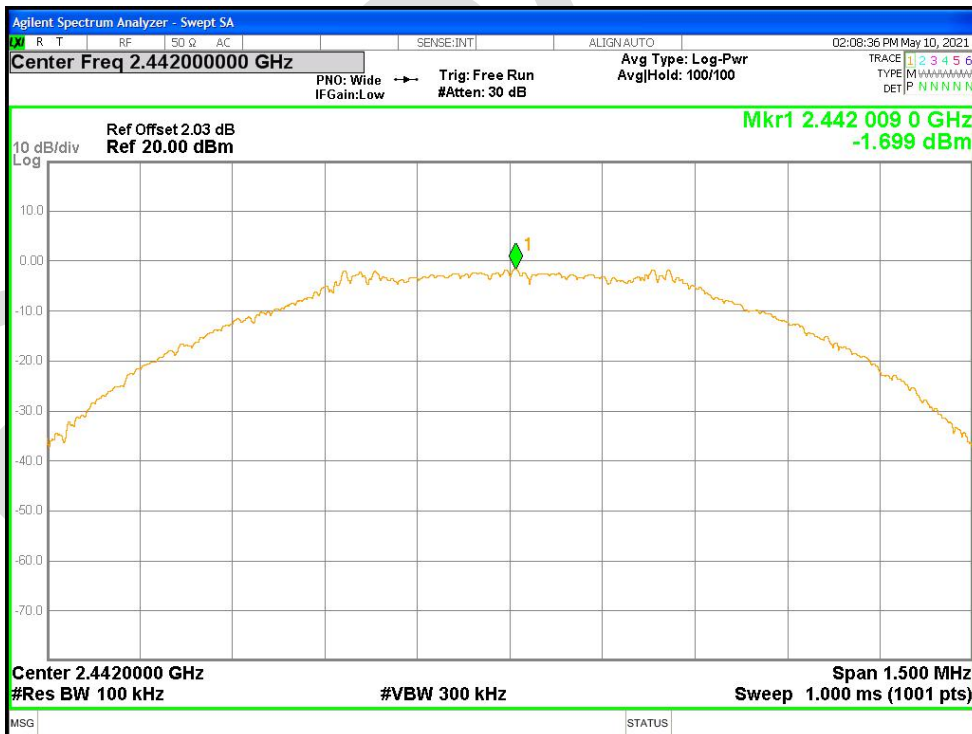
Tx. Spurious NVNT BLE 1M 2402MHz Ant1 Ref



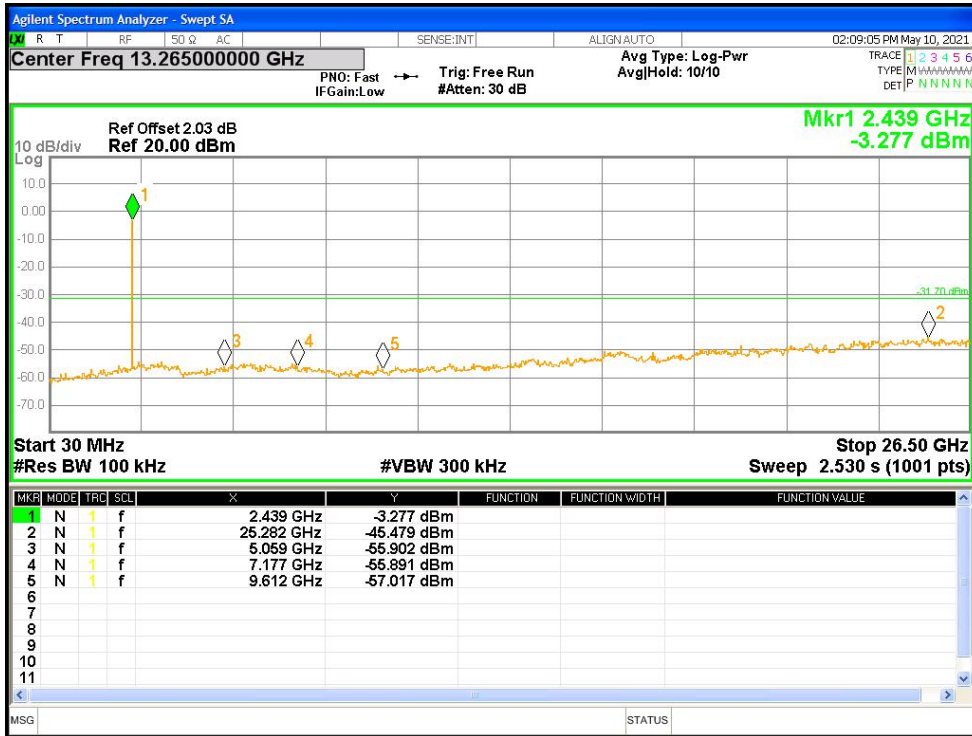
Tx. Spurious NVNT BLE 1M 2402MHz Ant1 Emission



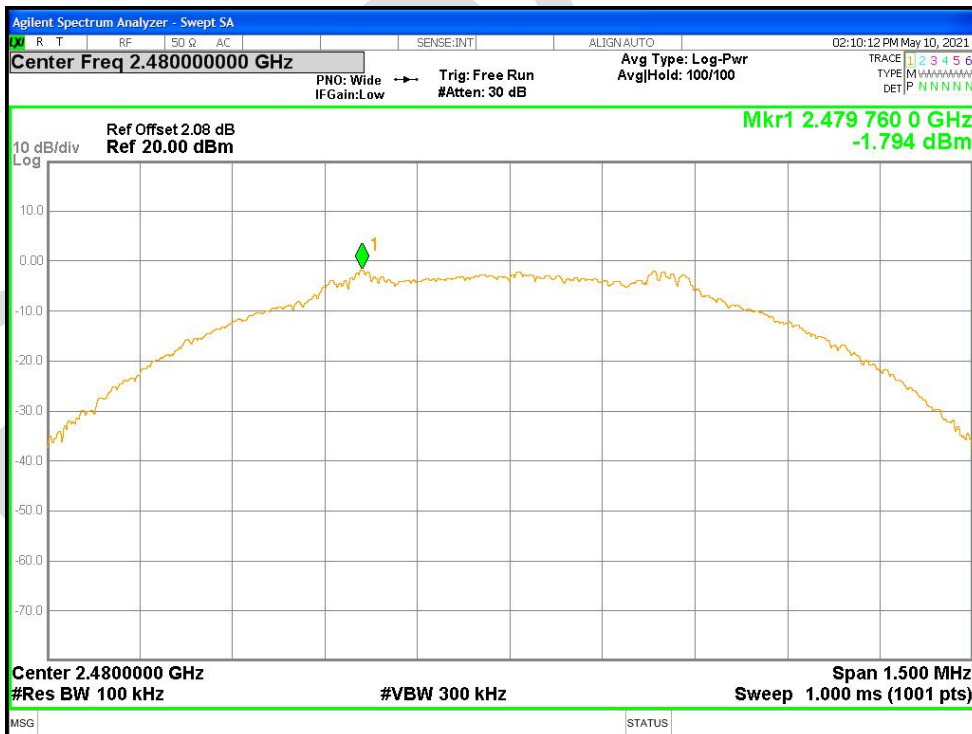
Tx. Spurious NVNT BLE 1M 2442MHz Ant1 Ref



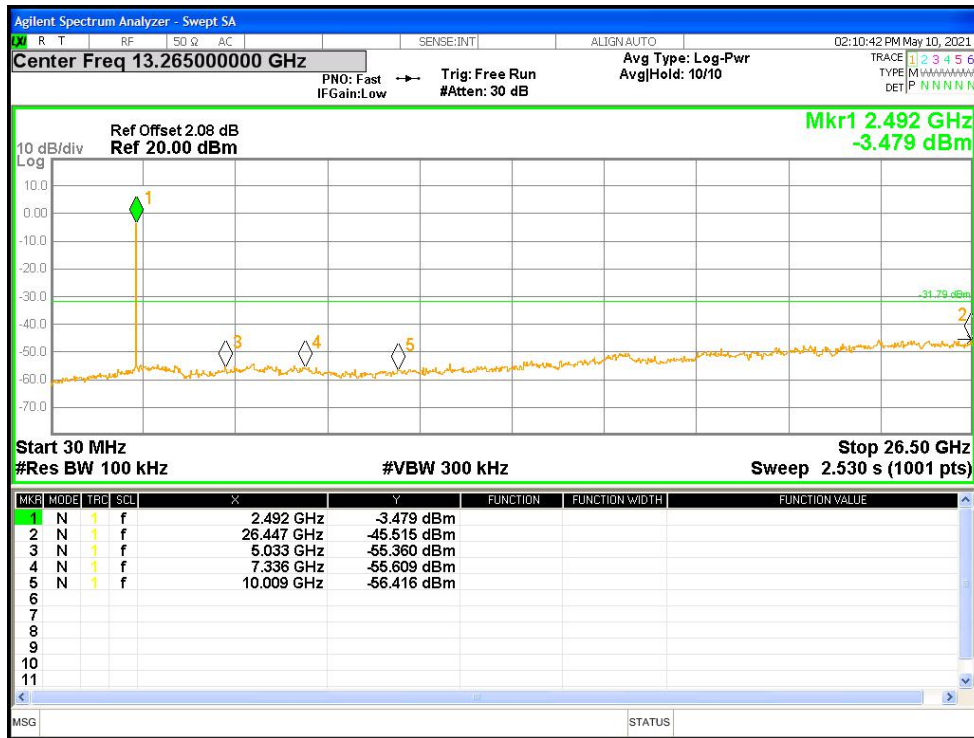
Tx. Spurious NVNT BLE 1M 2442MHz Ant1 Emission



Tx. Spurious NVNT BLE 1M 2480MHz Ant1 Ref



Tx. Spurious NVNT BLE 1M 2480MHz Ant1 Emission



APPENDIX A: PHOTOGRAPHS OF TEST SETUP

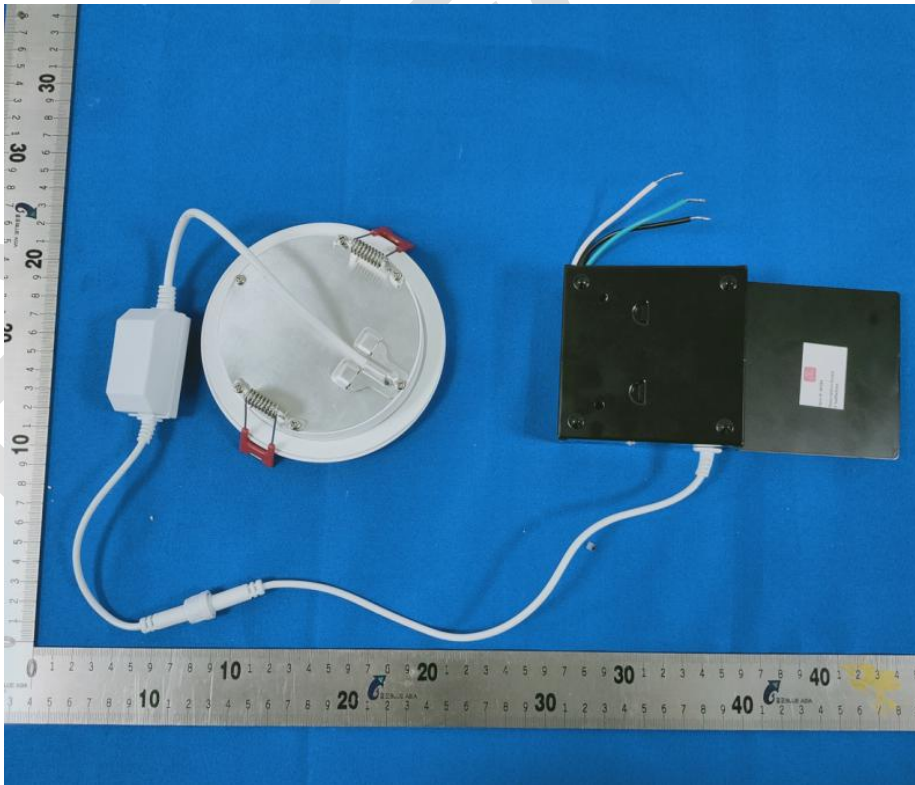
Radiated Spurious Emissions

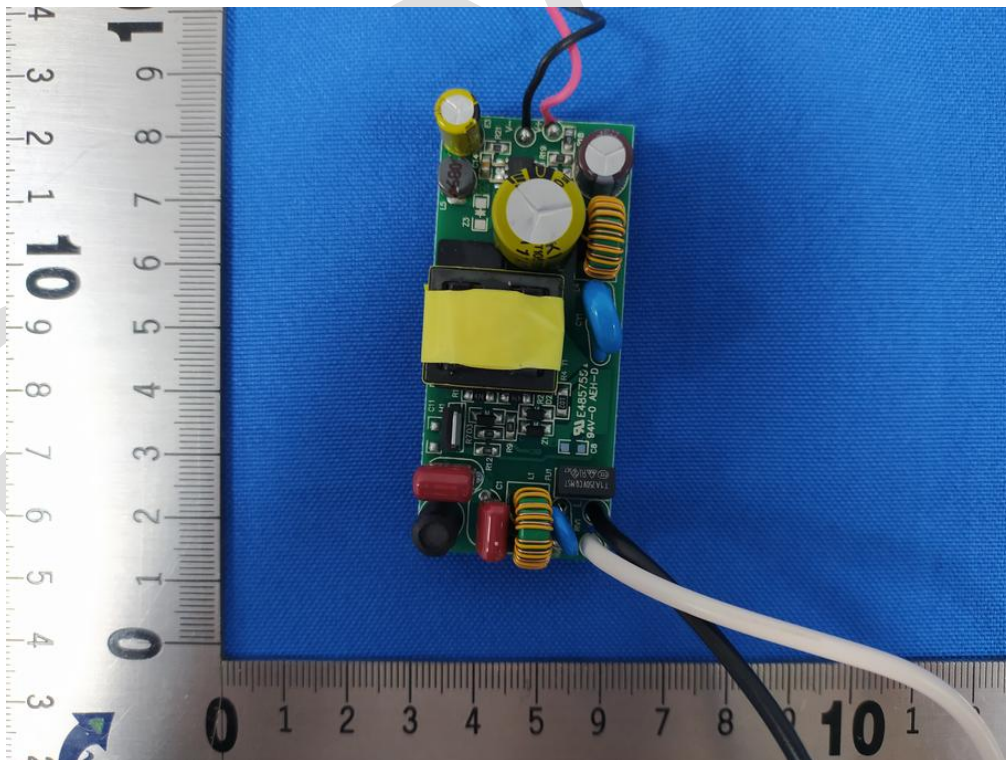
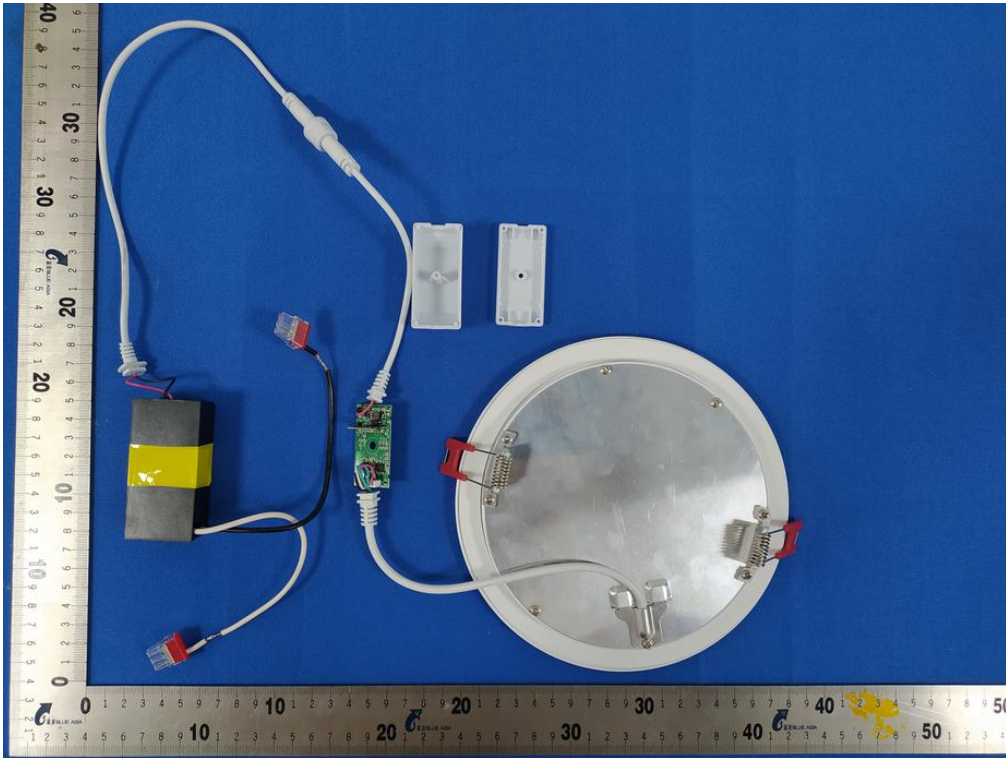


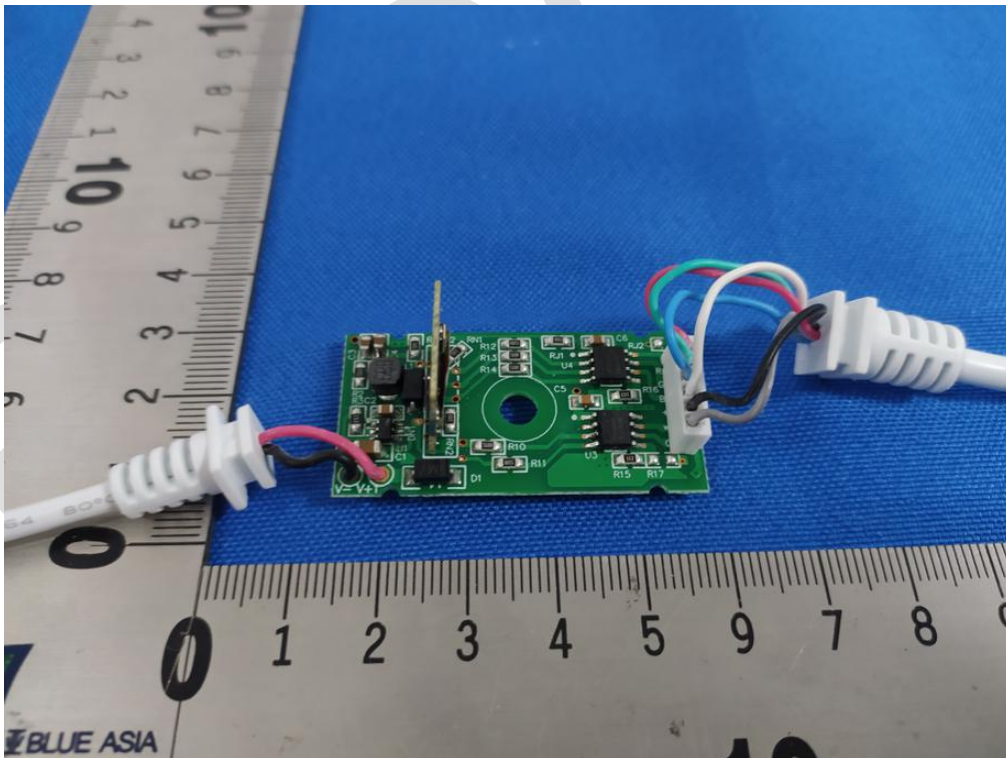
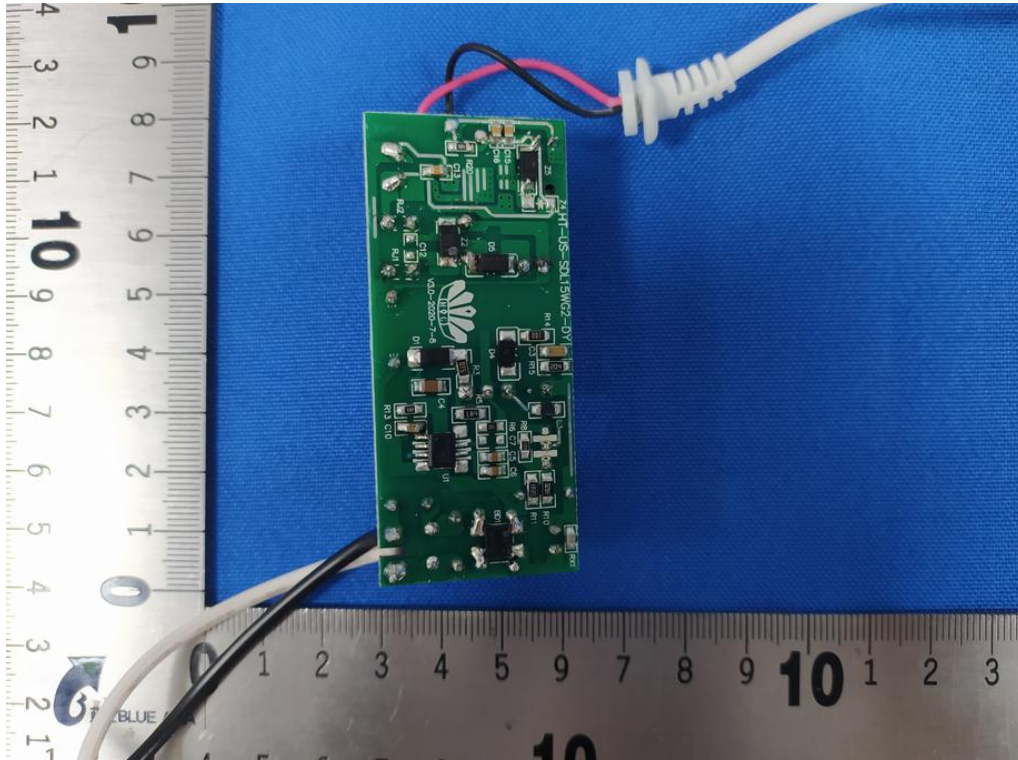
Conducted Emissions at AC Power Line (150kHz-30MHz)

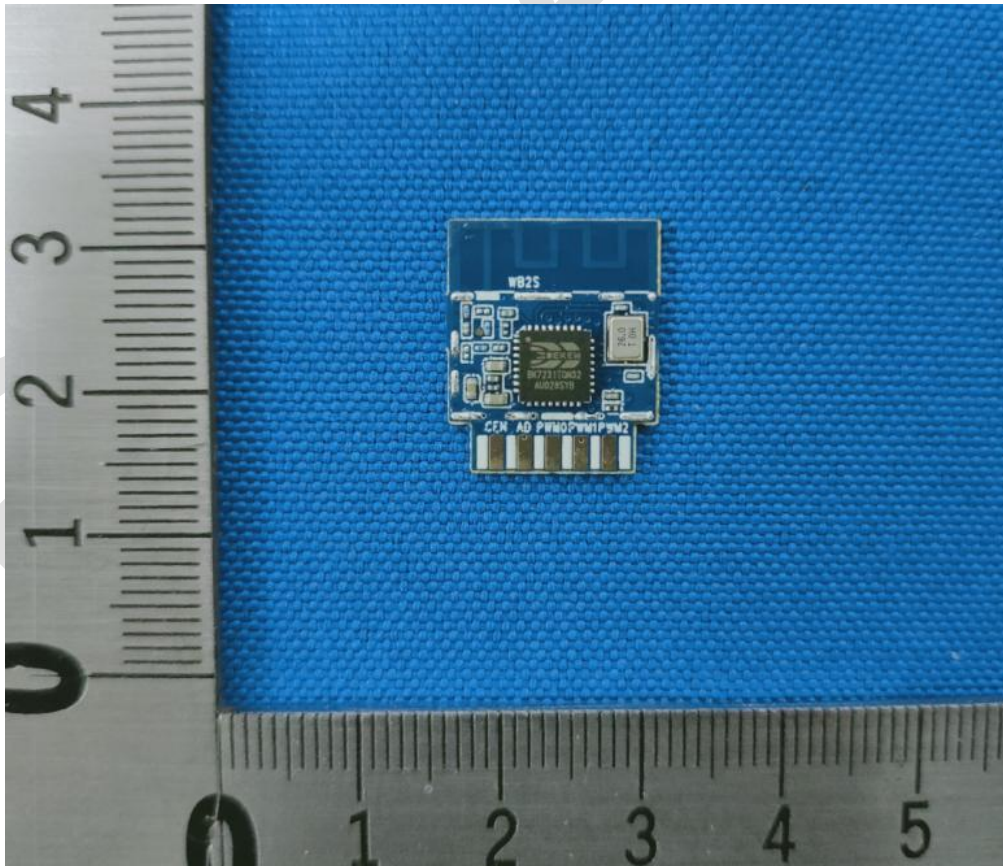
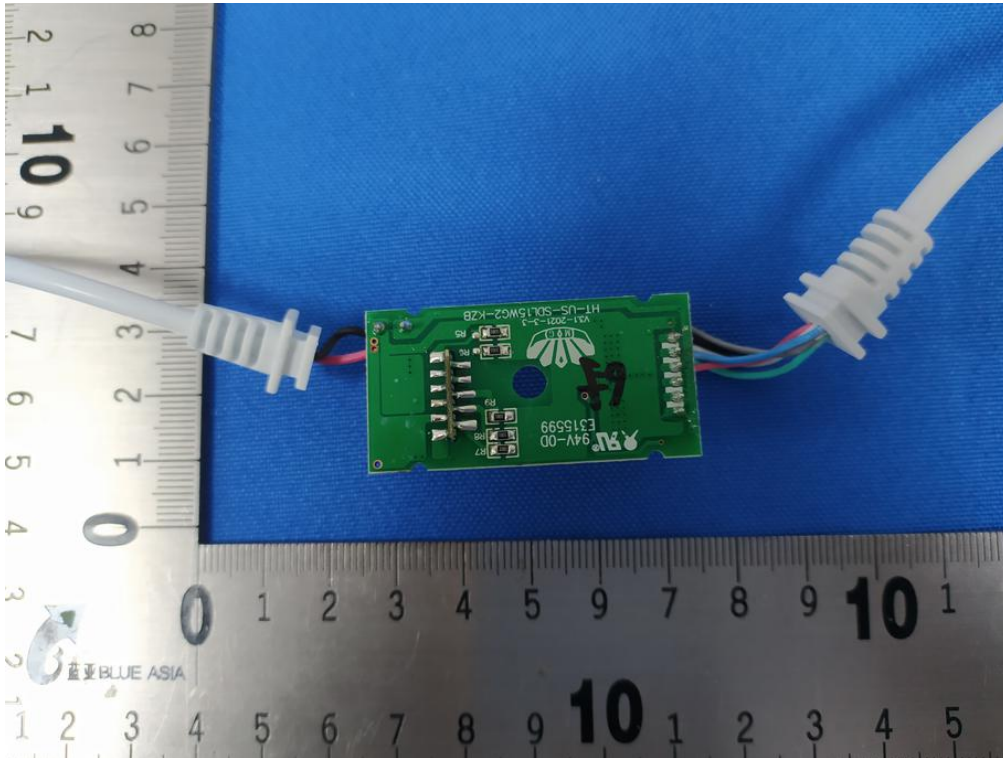


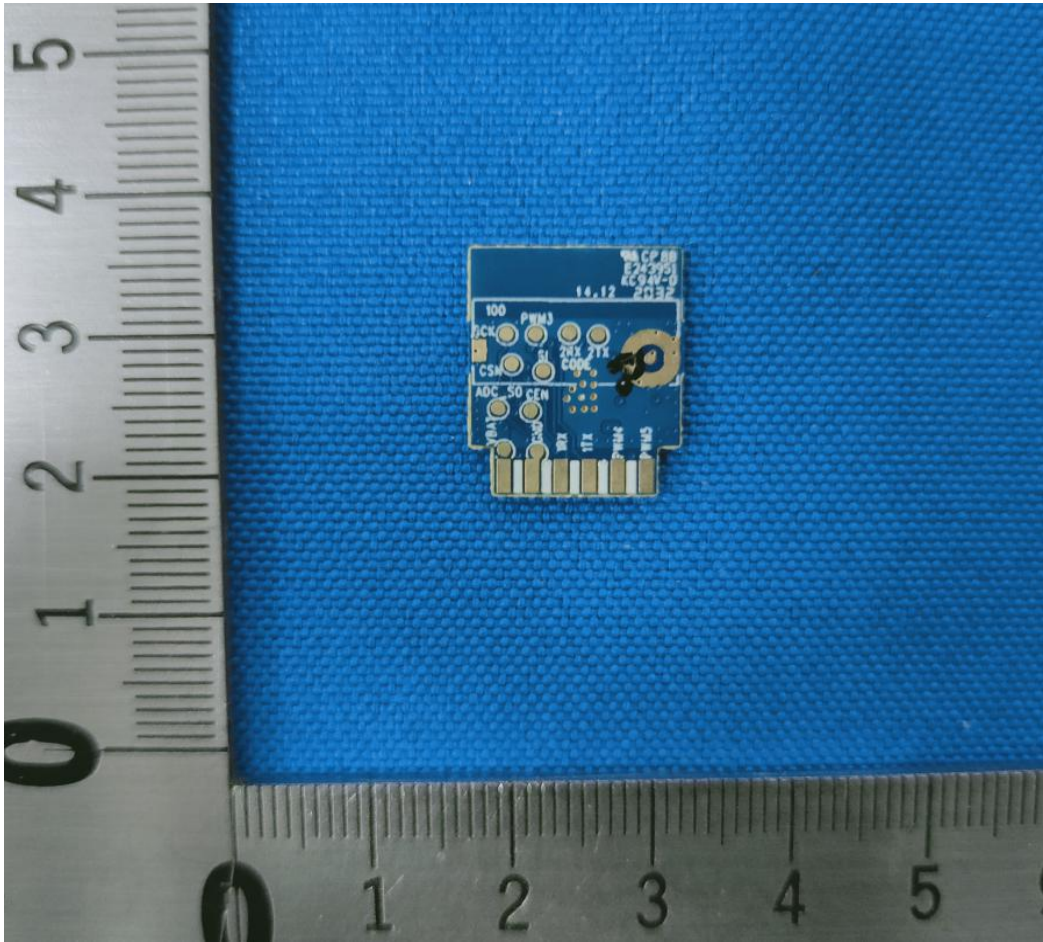
APPENDIX B: PHOTOGRAPHS OF EUT











----END OF REPORT----

The test report is effective only with both signature and specialized stamp, The result(s) shown in this report refer only to the sample(s) tested. Without written approval of BlueAsia, this report can't be reproduced except in full.