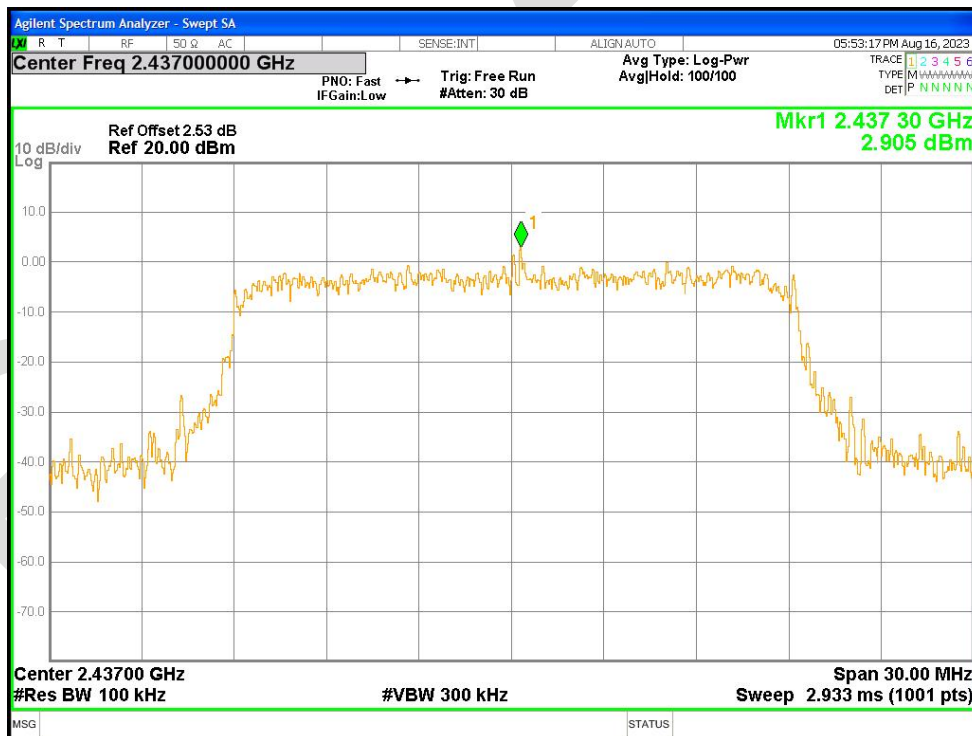
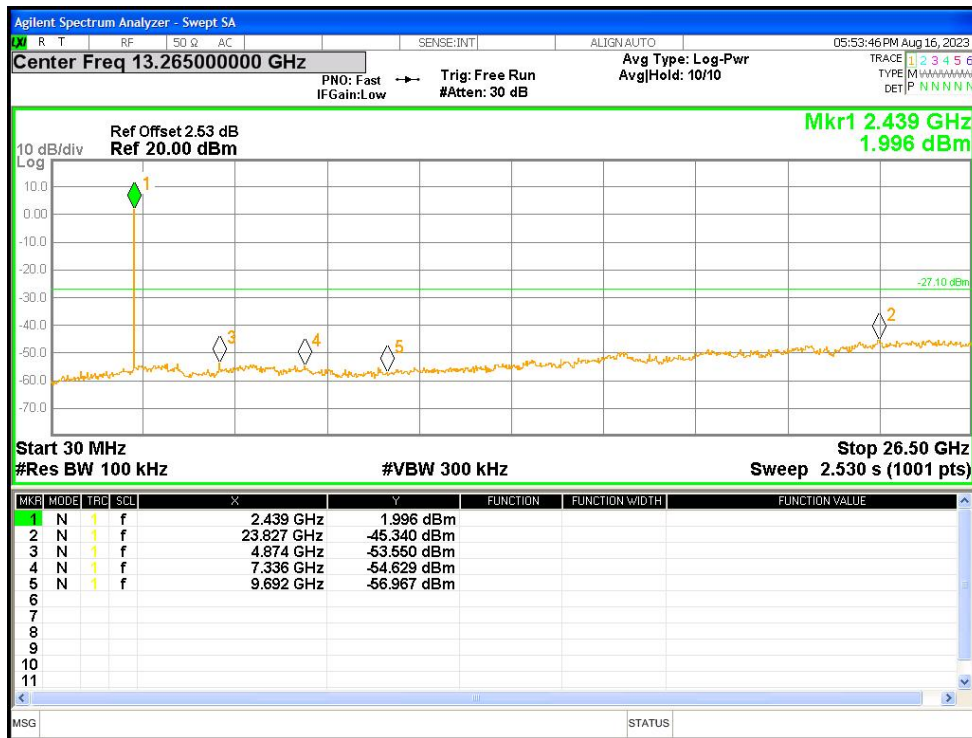


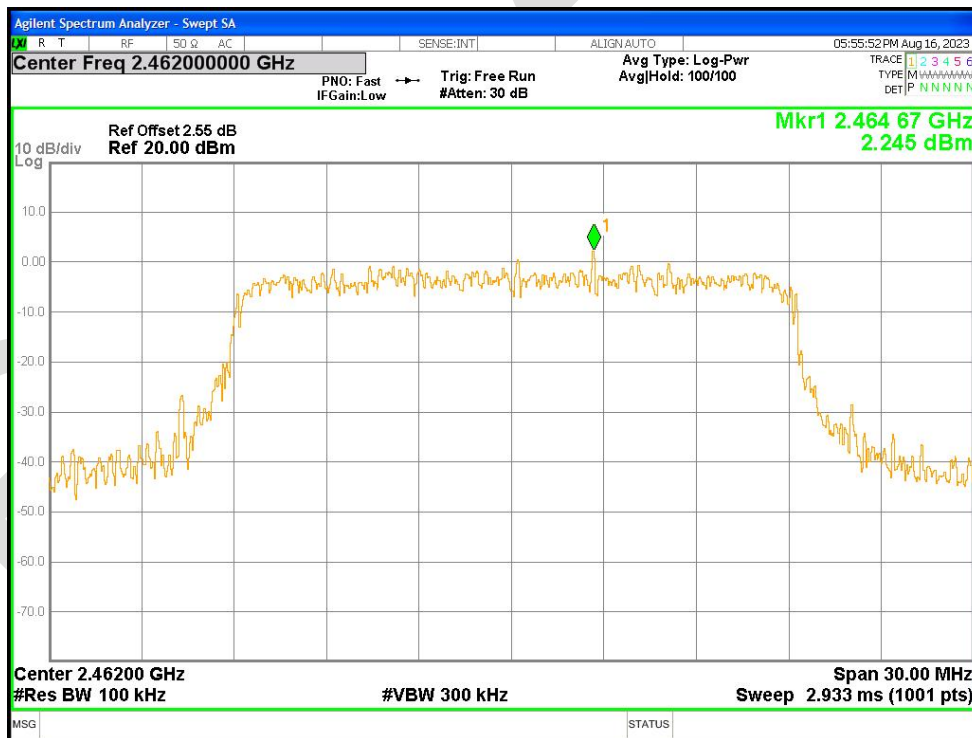
Tx. Spurious NVNT n20 2437MHz Ant1 Ref



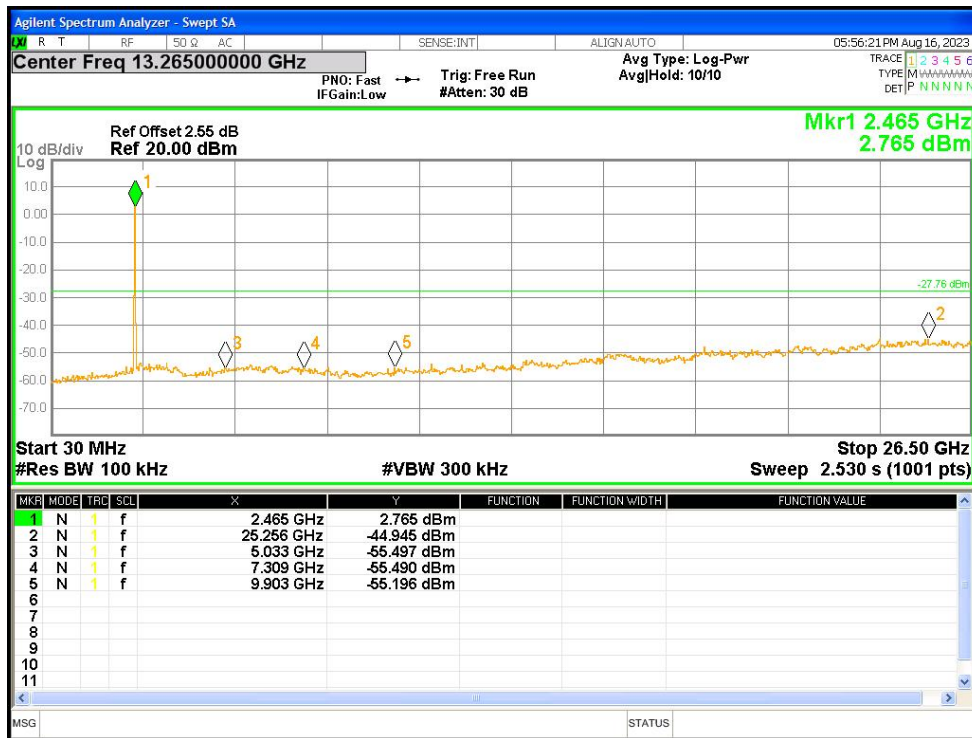
Tx. Spurious NVNT n20 2437MHz Ant1 Emission



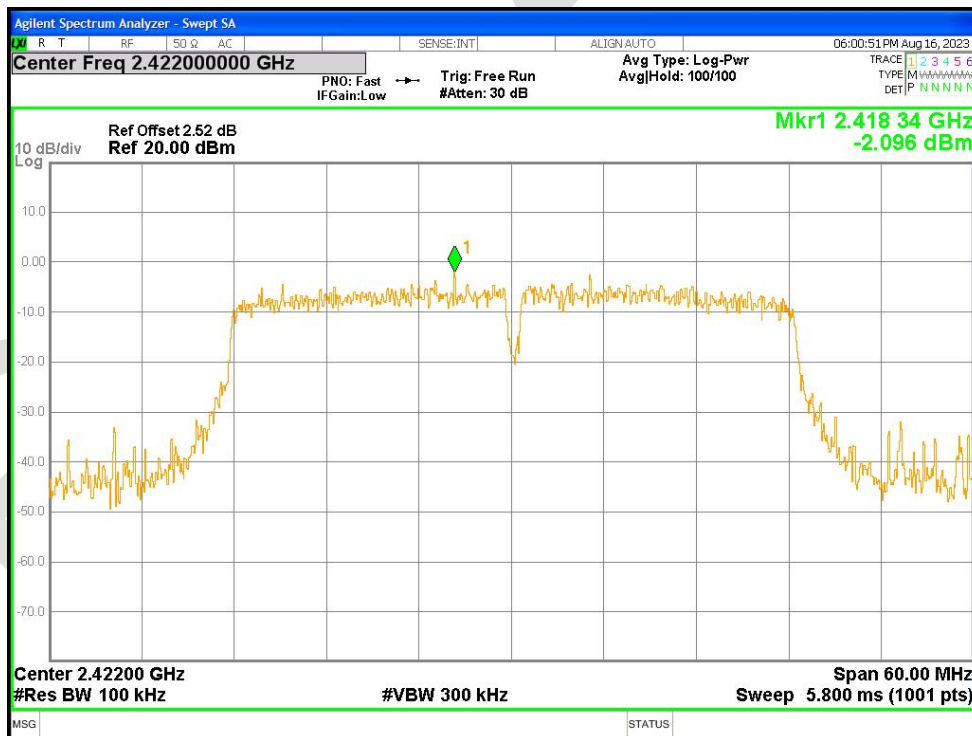
Tx. Spurious NVNT n20 2462MHz Ant1 Ref



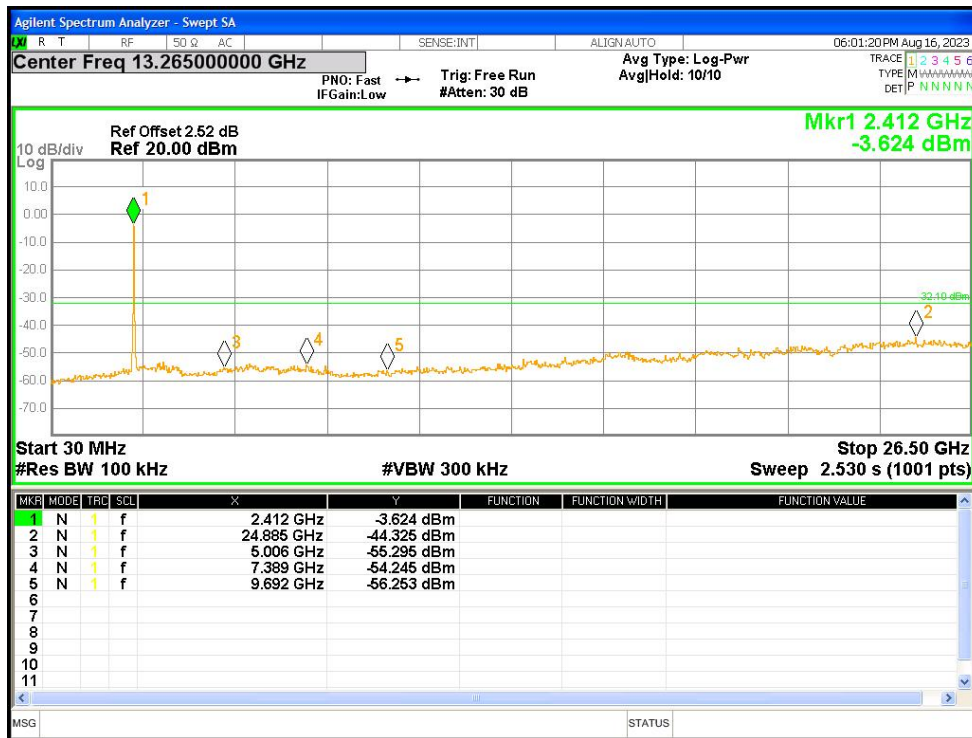
Tx. Spurious NVNT n20 2462MHz Ant1 Emission



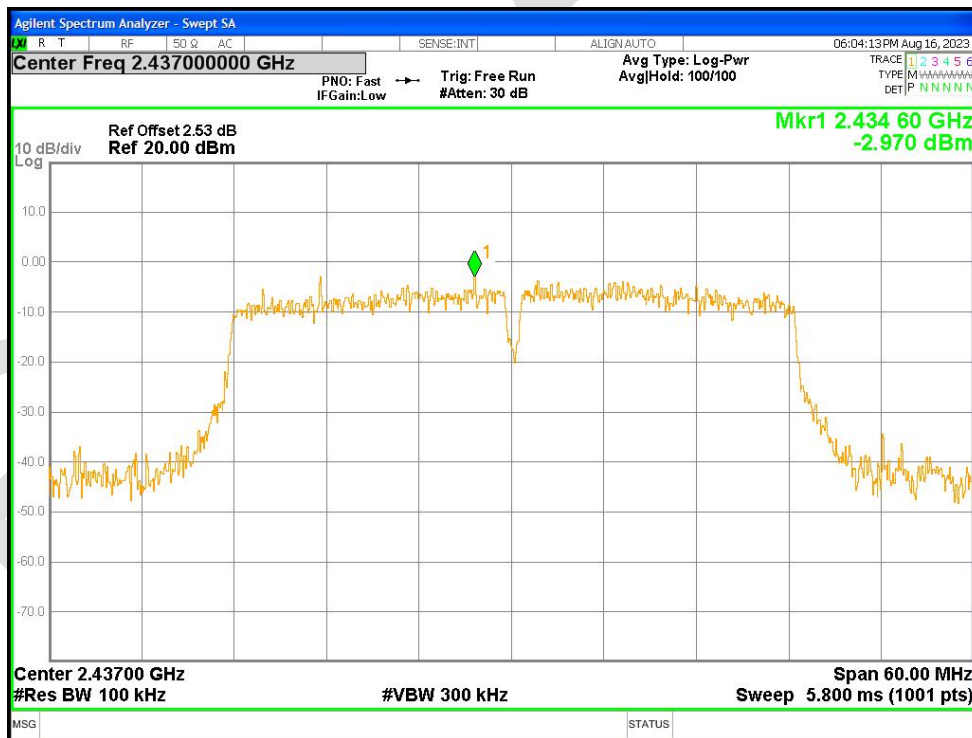
Tx. Spurious NVNT n40 2422MHz Ant1 Ref



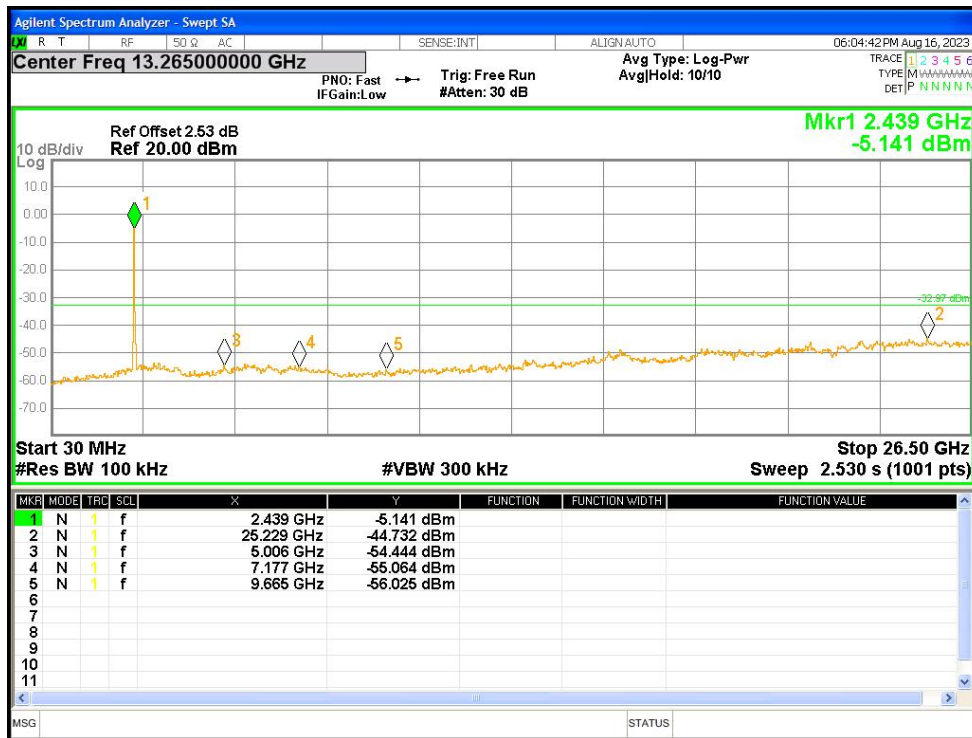
Tx. Spurious NVNT n40 2422MHz Ant1 Emission



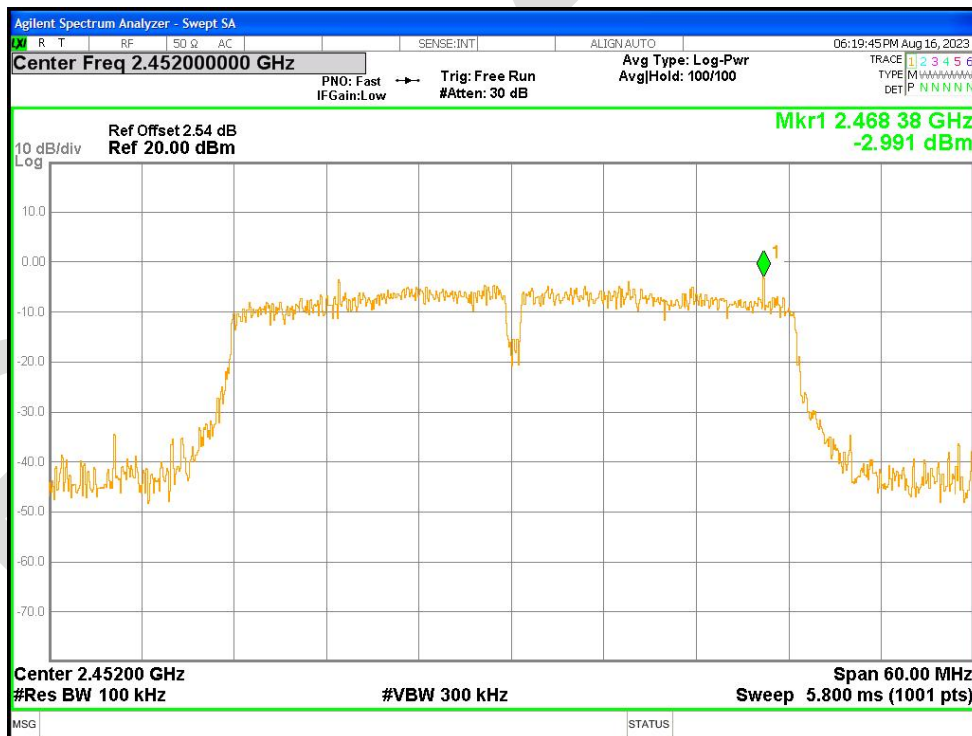
Tx. Spurious NVNT n40 2437MHz Ant1 Ref



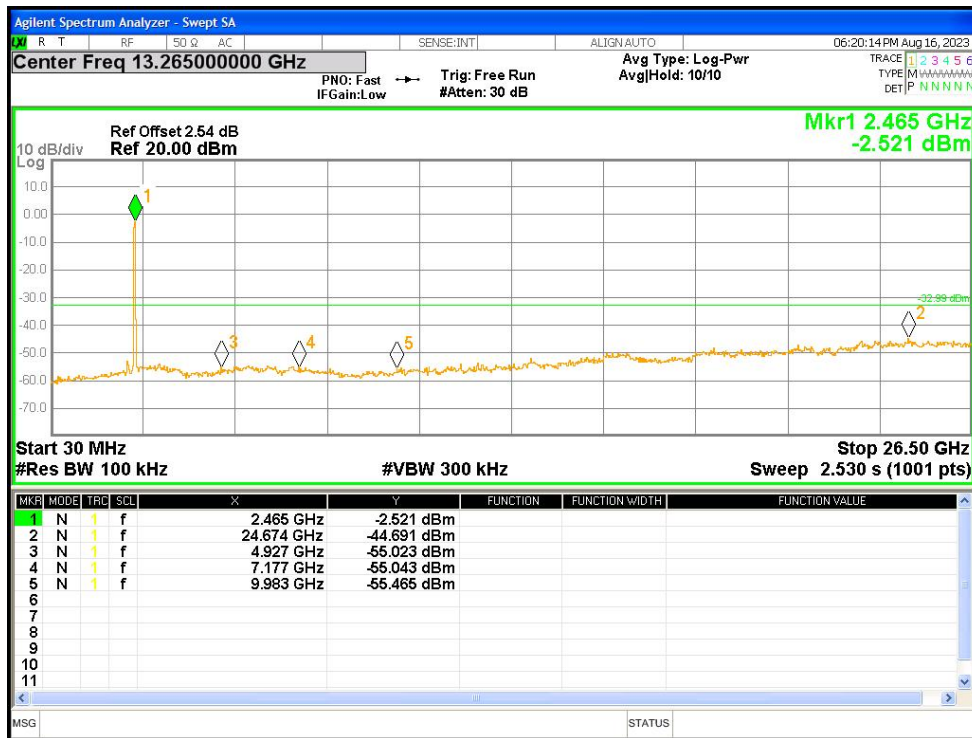
Tx. Spurious NVNT n40 2437MHz Ant1 Emission



Tx. Spurious NVNT n40 2452MHz Ant1 Ref

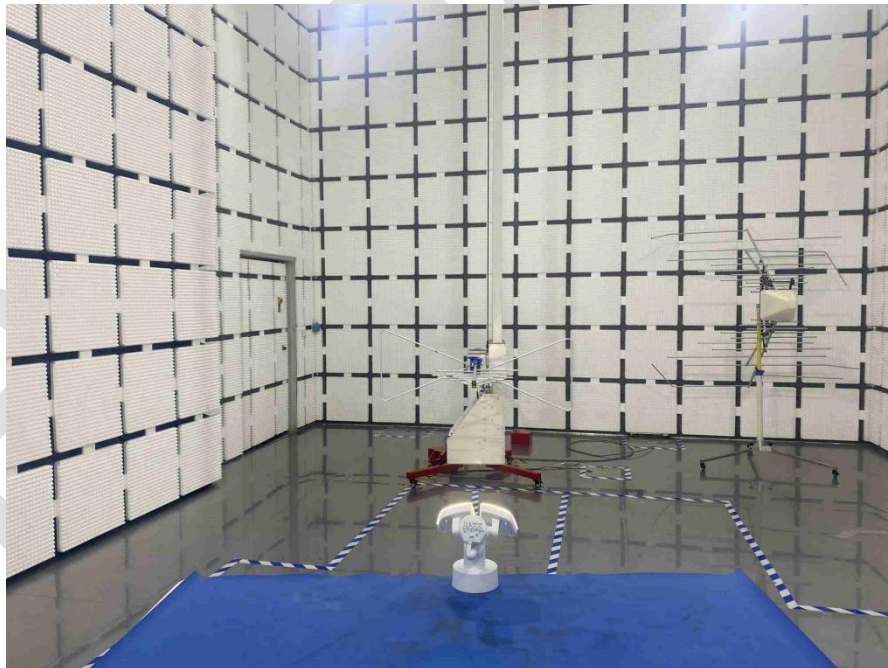


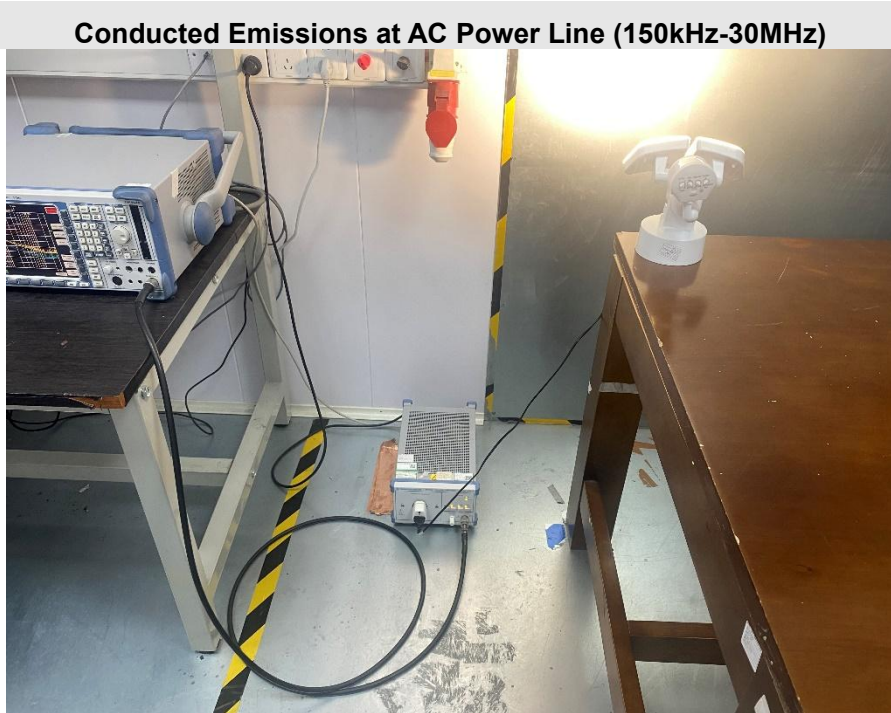
Tx. Spurious NVNT n40 2452MHz Ant1 Emission



## APPENDIX A: PHOTOGRAPHS OF TEST SETUP

### Radiated Spurious Emissions

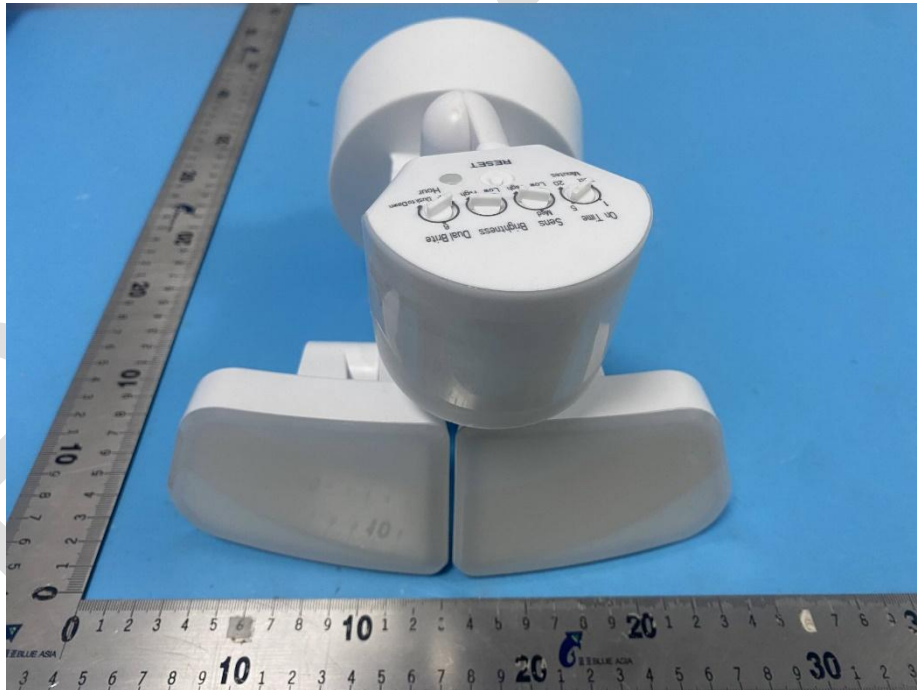
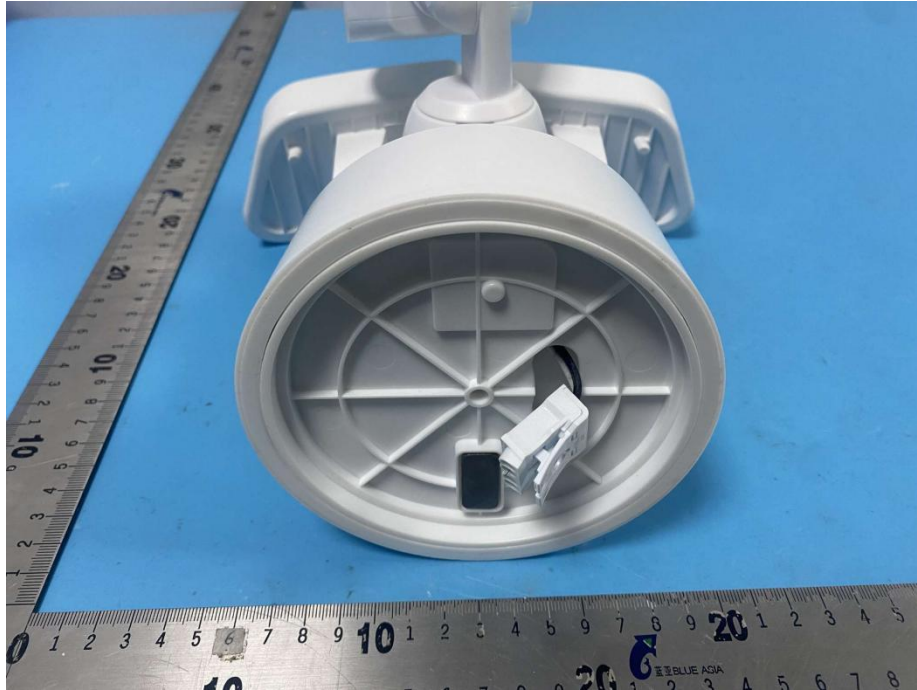




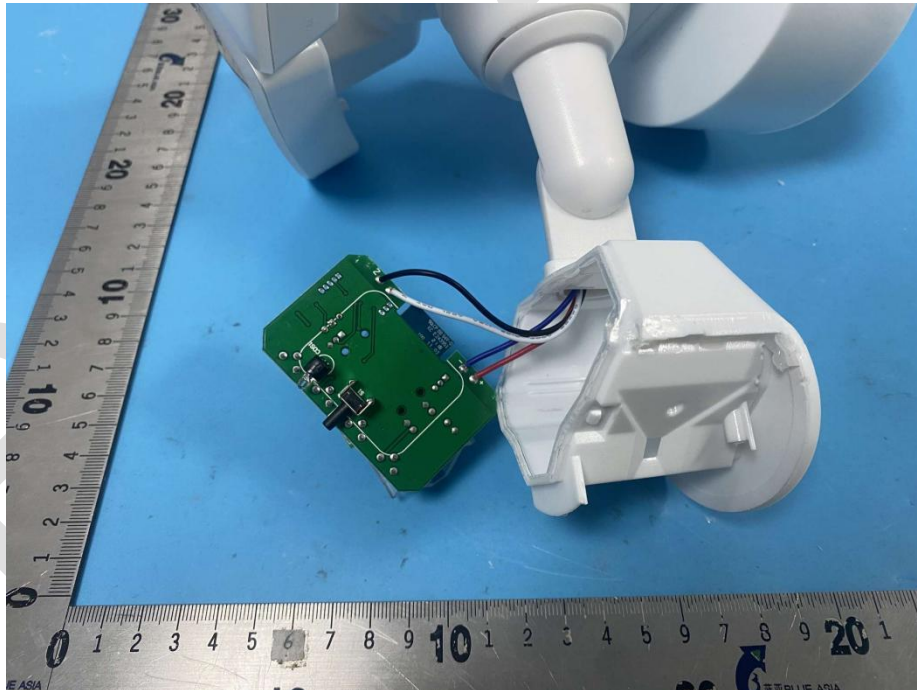


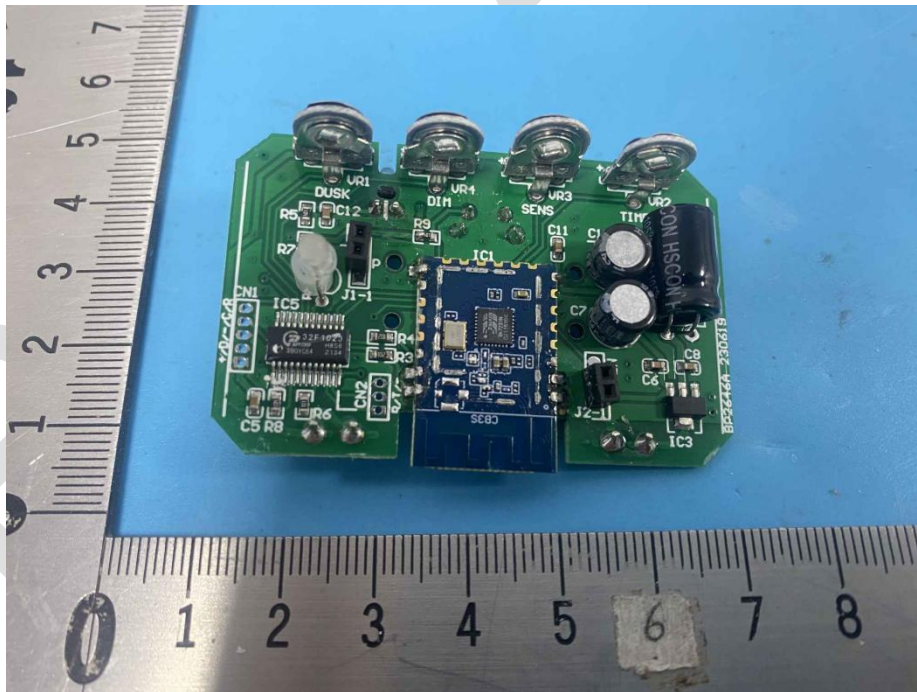
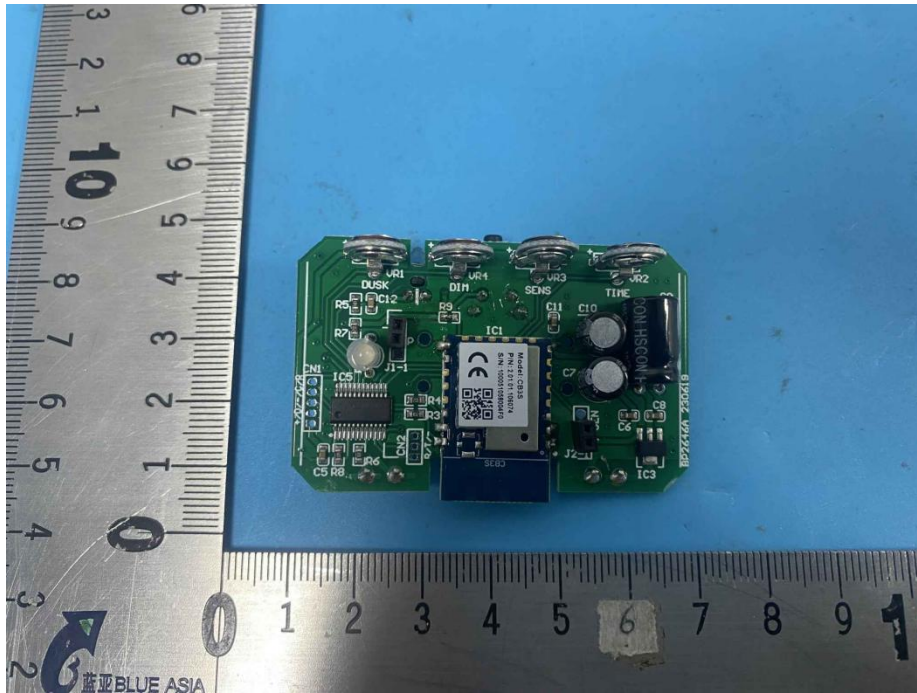
### APPENDIX B: PHOTOGRAPHS OF EUT

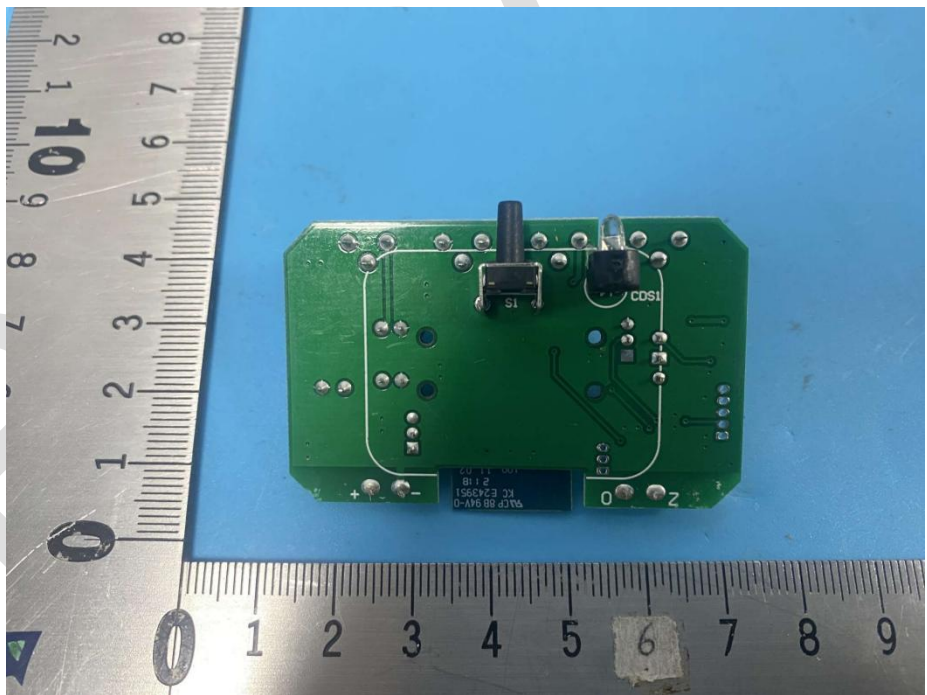
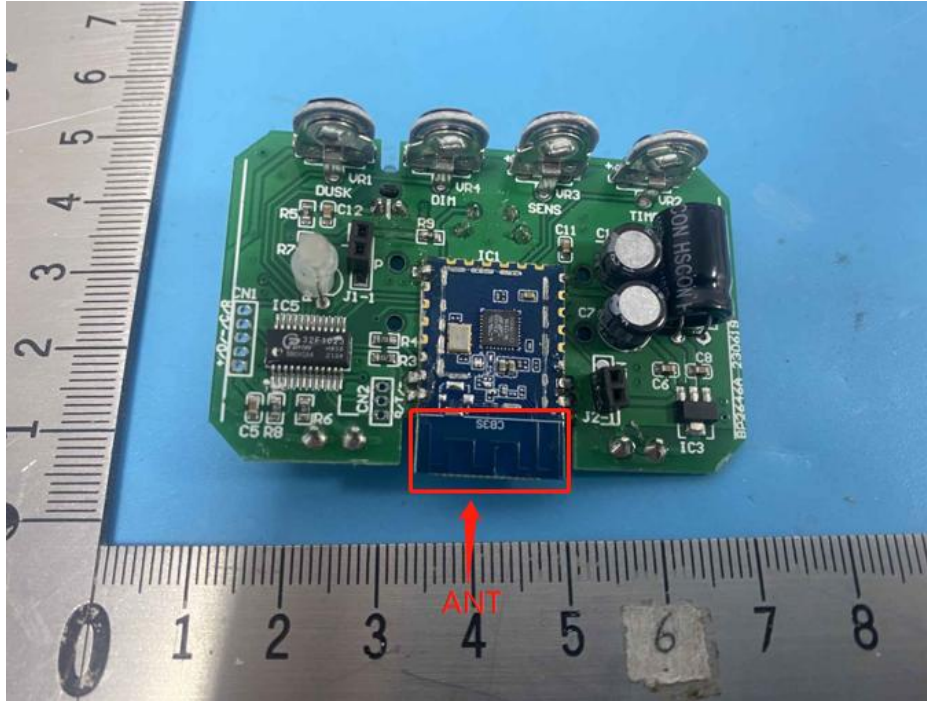


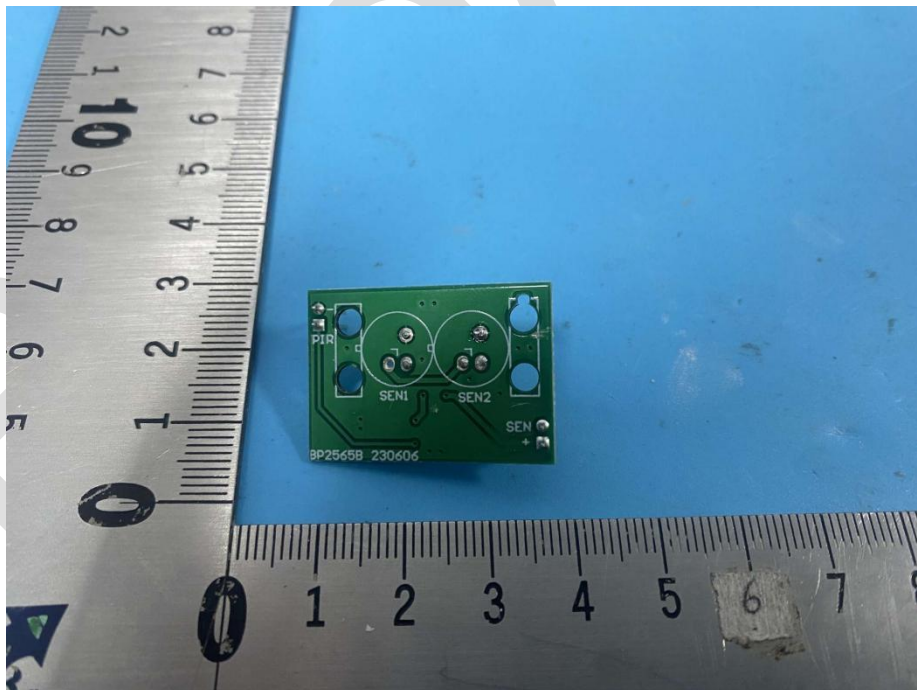
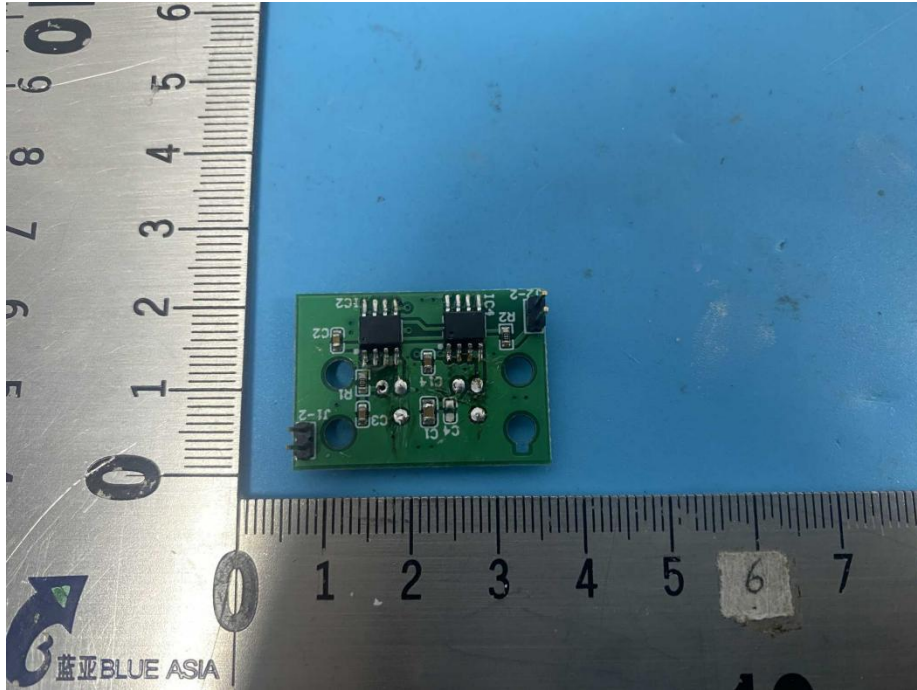






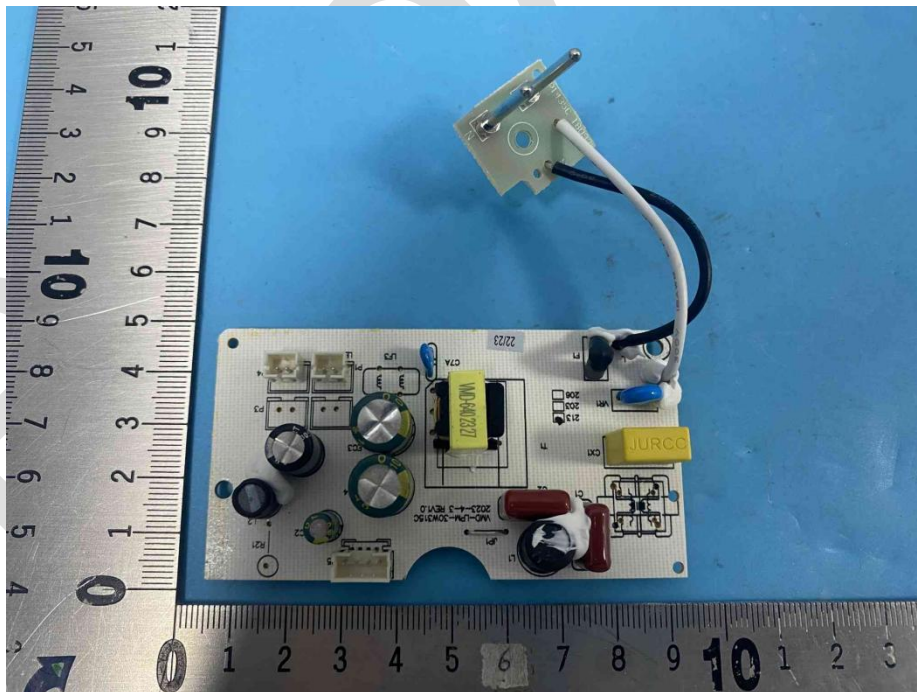
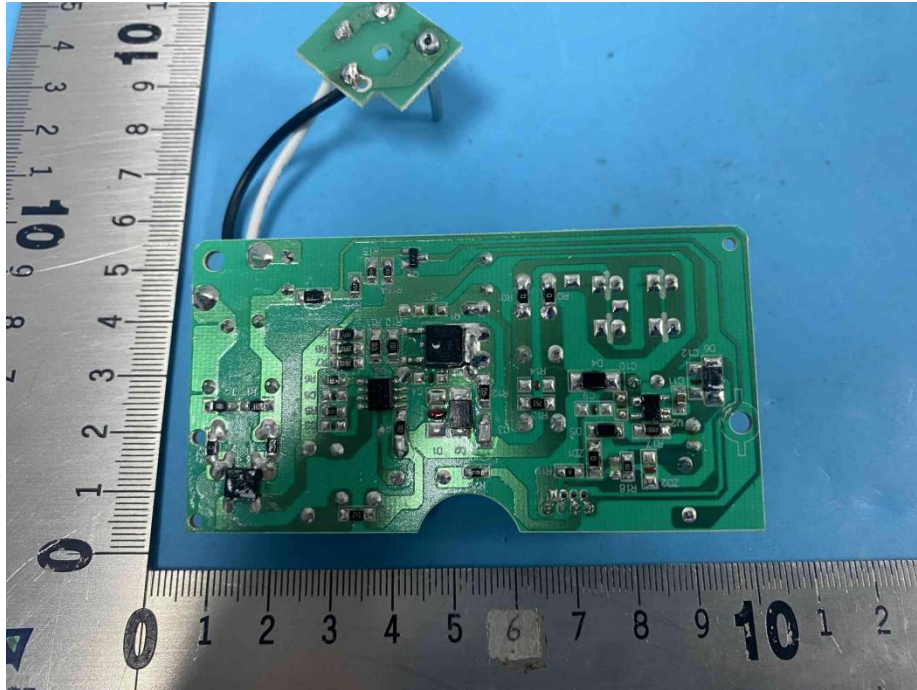












**----END OF REPORT----**

The test report is effective only with both signature and specialized stamp, The result(s) shown in this report refer only to the sample(s) tested. Without written approval of BlueAsia, this report can't be reproduced except in full.

BlueAsia