

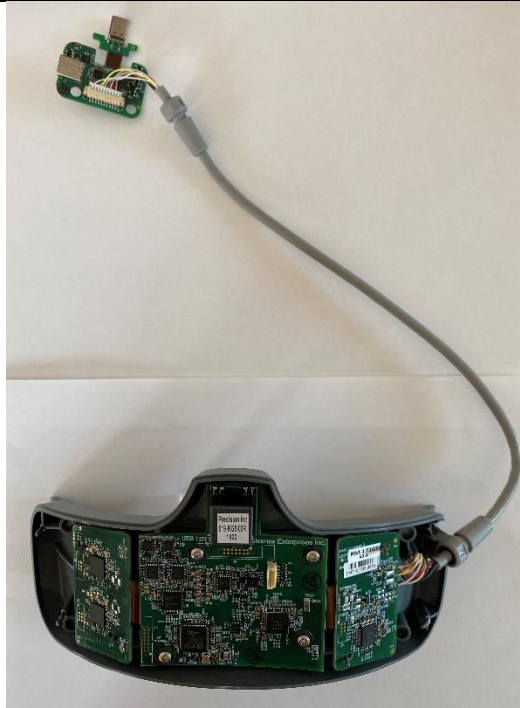


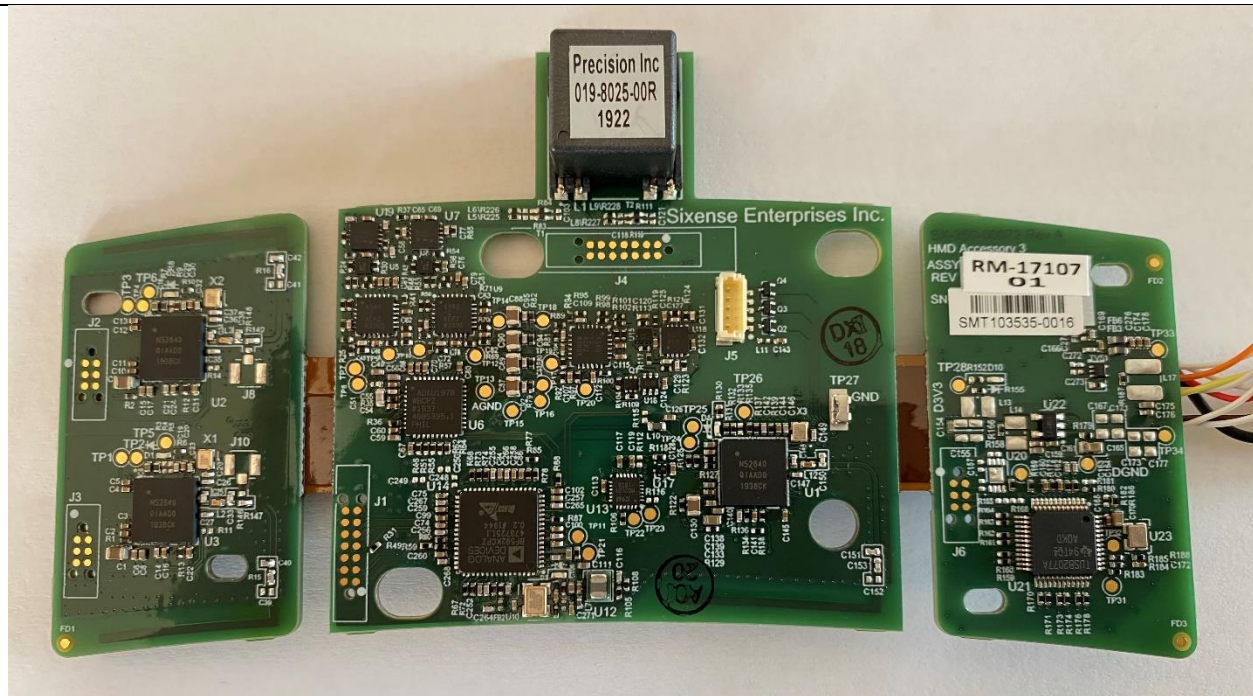
HMD Internal Photos

View	Photo
With Accessory Top Housing Off	 A photograph showing the internal components of the HMD. The top white housing is placed above the main black body. The main body is open, revealing a green printed circuit board (PCB) with various electronic components, including a battery, capacitors, and integrated circuits. A grey cable is connected to the top of the PCB. A small white rectangular component with the 'REAL' logo is also visible, connected to the main body.
With Interface Housing Off	 A photograph showing the internal components of the HMD with the interface housing removed. The white top housing is at the bottom. Above it, the interface housing is shown as a small black plastic piece. To the right is a white rectangular component with the 'REAL' logo. A green PCB with a cable is visible on the left side.

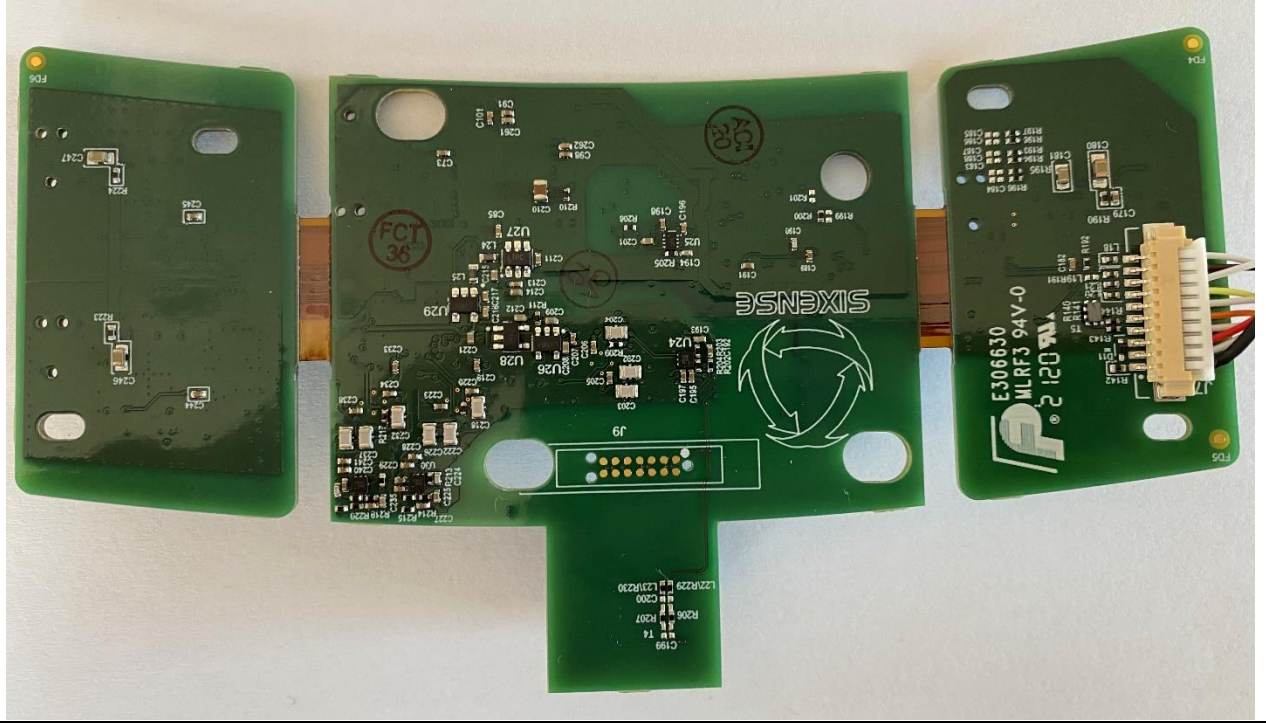
In-Housing Front



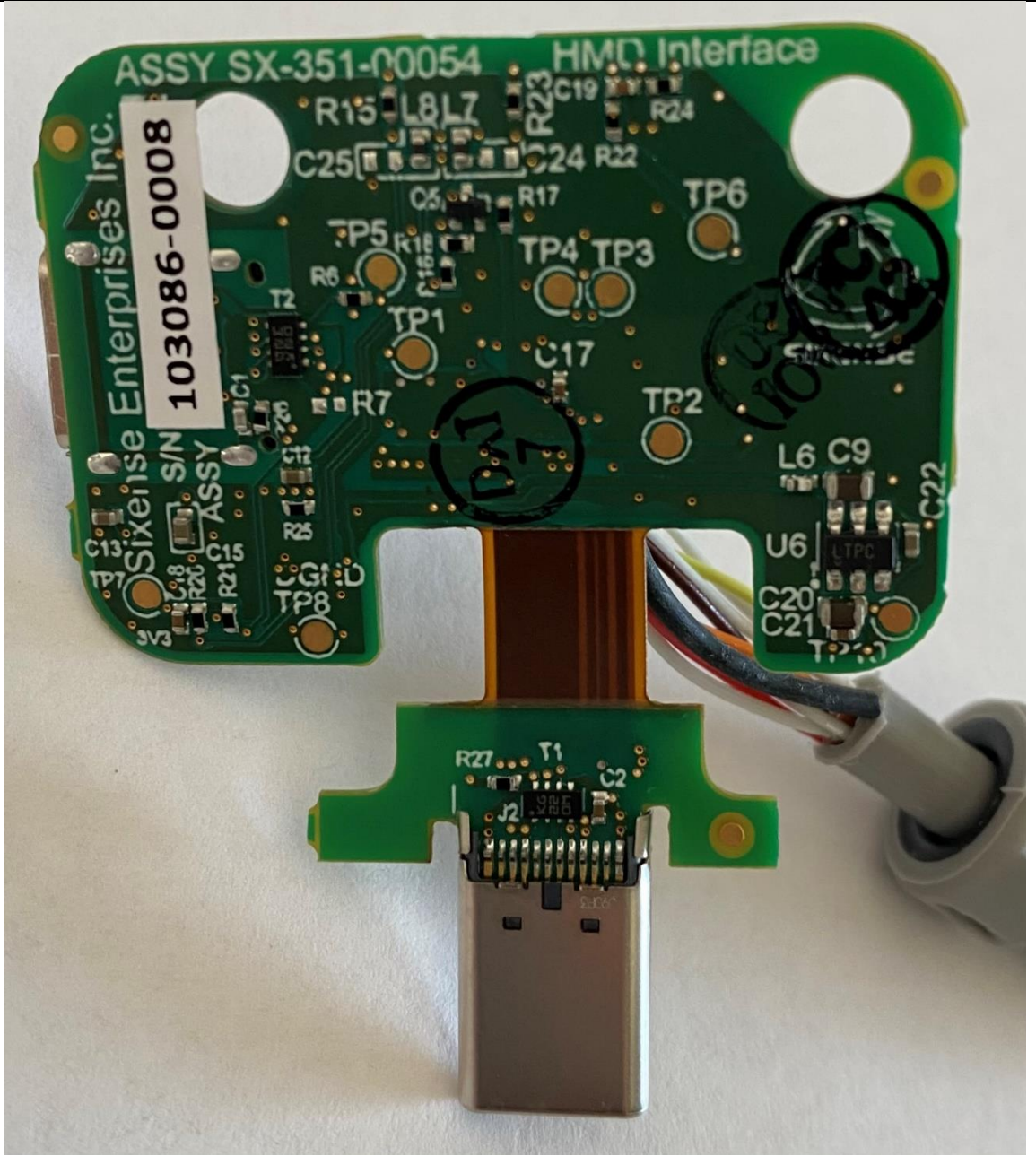
Accessory PCBA Top



Accessory
PCBA
Bottom



Interface
PCBA Top



Interface
PCBA
Bottom

