
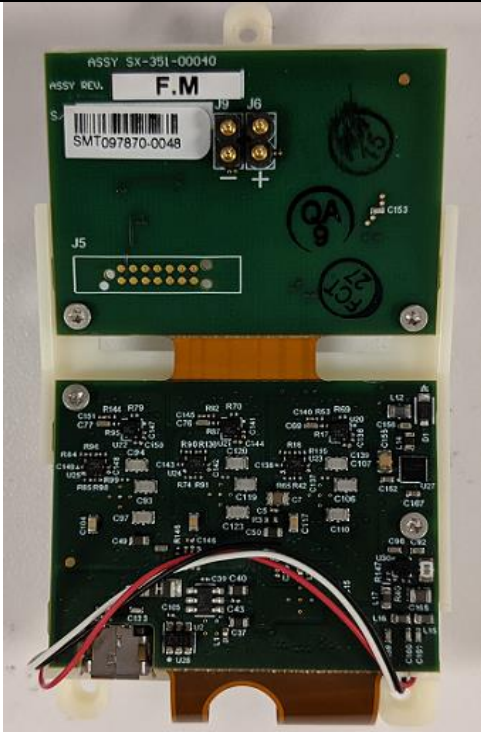

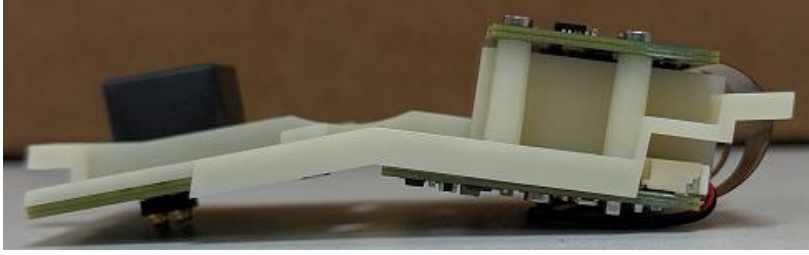


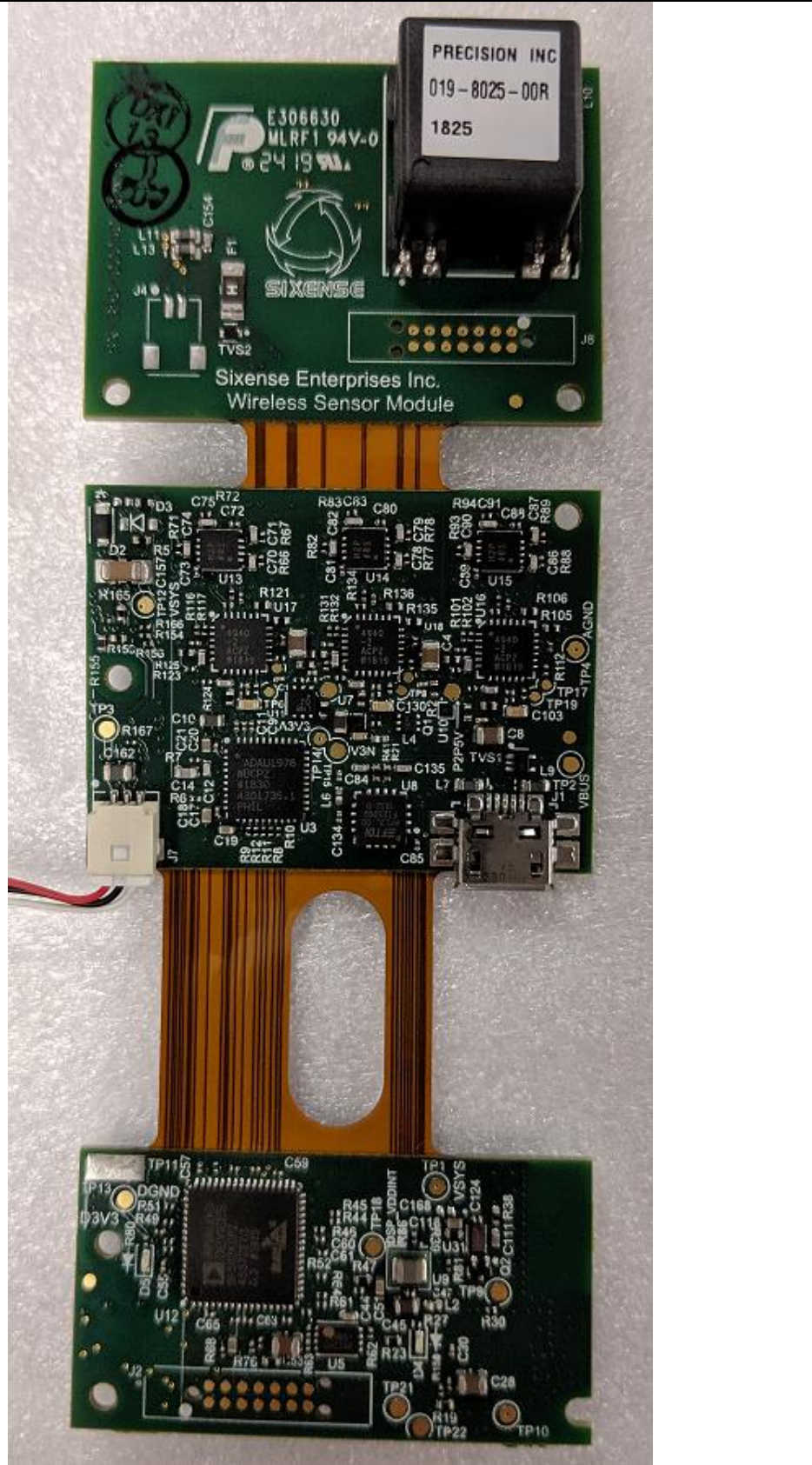


# WSM Internal Photos

View	Photo
In-Chassis Front	 <p>The front view shows a green PCB with various components. A white label on the right side of the PCB reads "PRECISION INC 019-8025-00R 1525". Below this, the text "Sixense Enterprises Inc. Wireless S... Module" is visible. The PCB is mounted on a white plastic frame.</p>
In-Chassis Back	 <p>The back view shows the reverse side of the green PCB. A white label at the top left contains the text "ASSY SX-351-00010", "F.M", and a barcode with "SMT097870-0048". Below the label, there are two gold-plated pins labeled "J5" and "J6". The PCB is populated with numerous components, including resistors (R1, R2, R3, R4, R5, R6, R7, R8, R9, R10, R11, R12, R13, R14, R15, R16, R17, R18, R19, R20, R21, R22, R23, R24, R25, R26, R27, R28, R29, R30, R31, R32, R33, R34, R35, R36, R37, R38, R39, R40, R41, R42, R43, R44, R45, R46, R47, R48, R49, R50, R51, R52, R53, R54, R55, R56, R57, R58, R59, R60, R61, R62, R63, R64, R65, R66, R67, R68, R69, R70, R71, R72, R73, R74, R75, R76, R77, R78, R79, R80, R81, R82, R83, R84, R85, R86, R87, R88, R89, R90, R91, R92, R93, R94, R95, R96, R97, R98, R99, R100), capacitors (C1, C2, C3, C4, C5, C6, C7, C8, C9, C10, C11, C12, C13, C14, C15, C16, C17, C18, C19, C20, C21, C22, C23, C24, C25, C26, C27, C28, C29, C30, C31, C32, C33, C34, C35, C36, C37, C38, C39, C40, C41, C42, C43, C44, C45, C46, C47, C48, C49, C50, C51, C52, C53, C54, C55, C56, C57, C58, C59, C60, C61, C62, C63, C64, C65, C66, C67, C68, C69, C70, C71, C72, C73, C74, C75, C76, C77, C78, C79, C80, C81, C82, C83, C84, C85, C86, C87, C88, C89, C90, C91, C92, C93, C94, C95, C96, C97, C98, C99, C100), and integrated circuits (U1, U2, U3, U4, U5, U6, U7, U8, U9, U10, U11, U12, U13, U14, U15, U16, U17, U18, U19, U20, U21, U22, U23, U24, U25, U26, U27, U28, U29, U30, U31, U32, U33, U34, U35, U36, U37, U38, U39, U40, U41, U42, U43, U44, U45, U46, U47, U48, U49, U50, U51, U52, U53, U54, U55, U56, U57, U58, U59, U60, U61, U62, U63, U64, U65, U66, U67, U68, U69, U70, U71, U72, U73, U74, U75, U76, U77, U78, U79, U80, U81, U82, U83, U84, U85, U86, U87, U88, U89, U90, U91, U92, U93, U94, U95, U96, U97, U98, U99, U100). The PCB is mounted on a white plastic frame.</p>

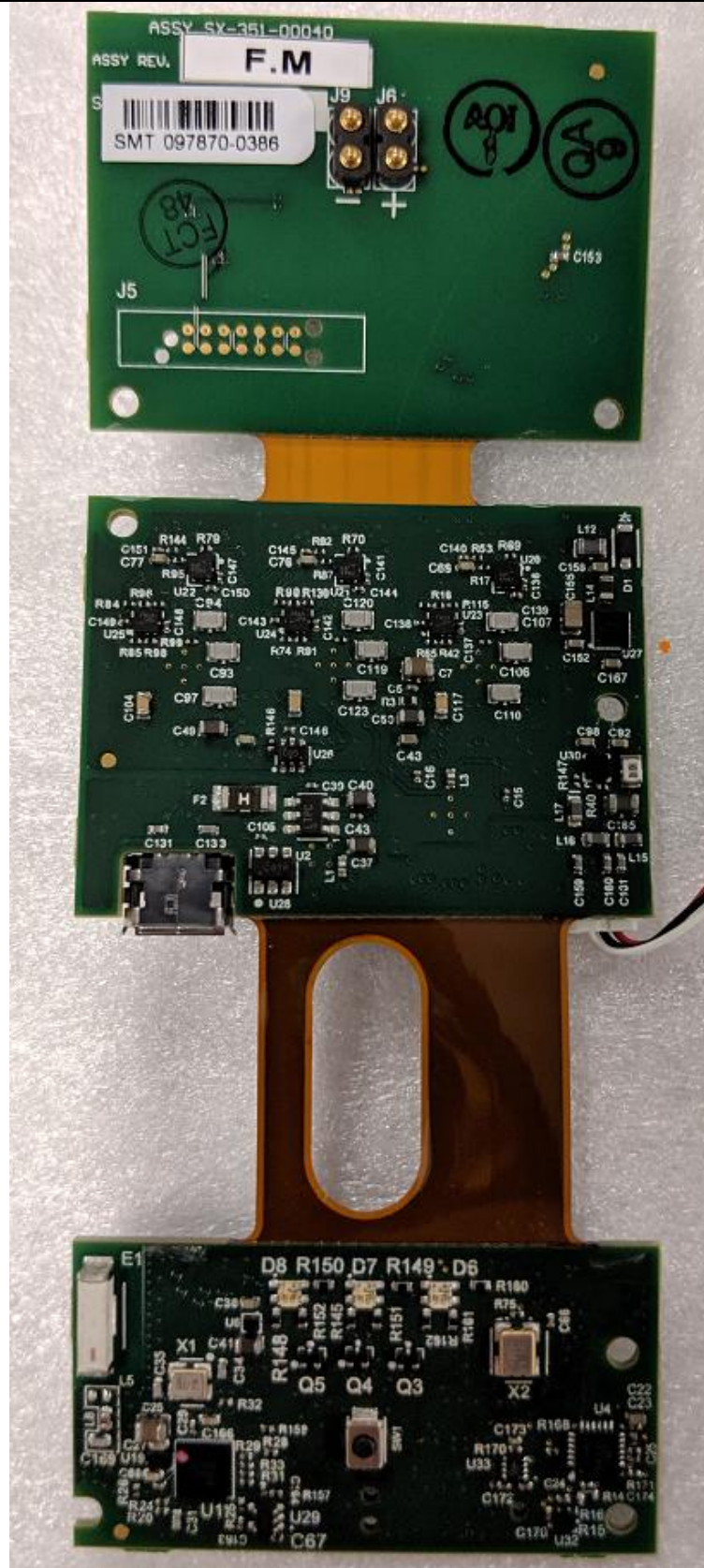
<p>In-Chassis Left</p>	
<p>In-Chassis Right</p>	
<p>In-Chassis Top</p>	
<p>In-Chassis Bottom</p>	

PCBA  
Front





PCBA Back

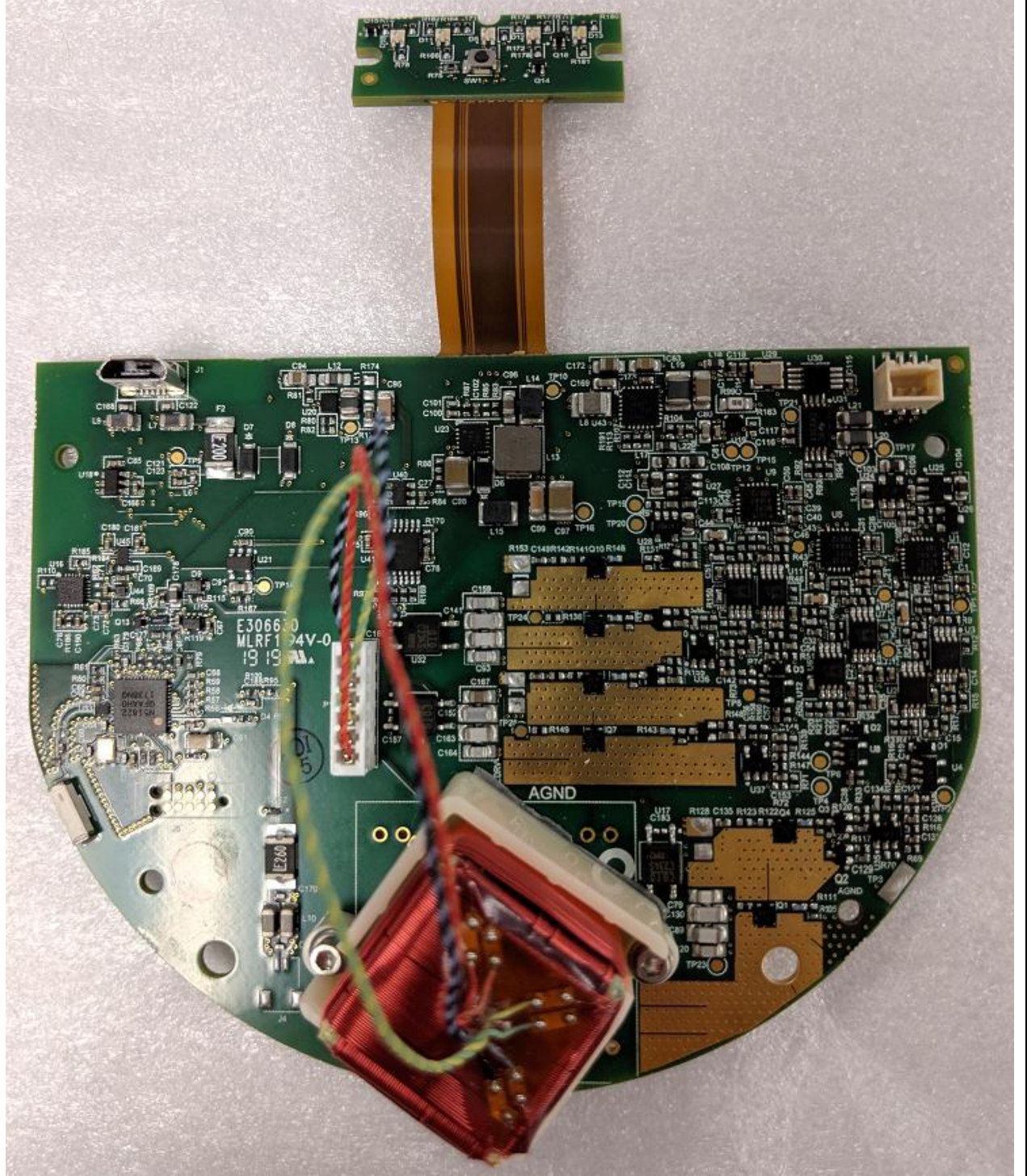


## WTM Internal Photos

View	Photo
In-Housing Front	 <p>The photograph shows the internal components of a device housed in a black plastic casing. At the top, a cylindrical battery is mounted horizontally. Below it is a green printed circuit board (PCB) populated with various electronic components, including integrated circuits, resistors, and capacitors. A prominent feature is a diamond-shaped antenna assembly with a copper-colored base and a white protective cap, connected to the PCB by thin wires. Several colored wires (red, yellow, blue) are routed across the board. The entire assembly is held in place by four screws around the perimeter of the casing.</p>

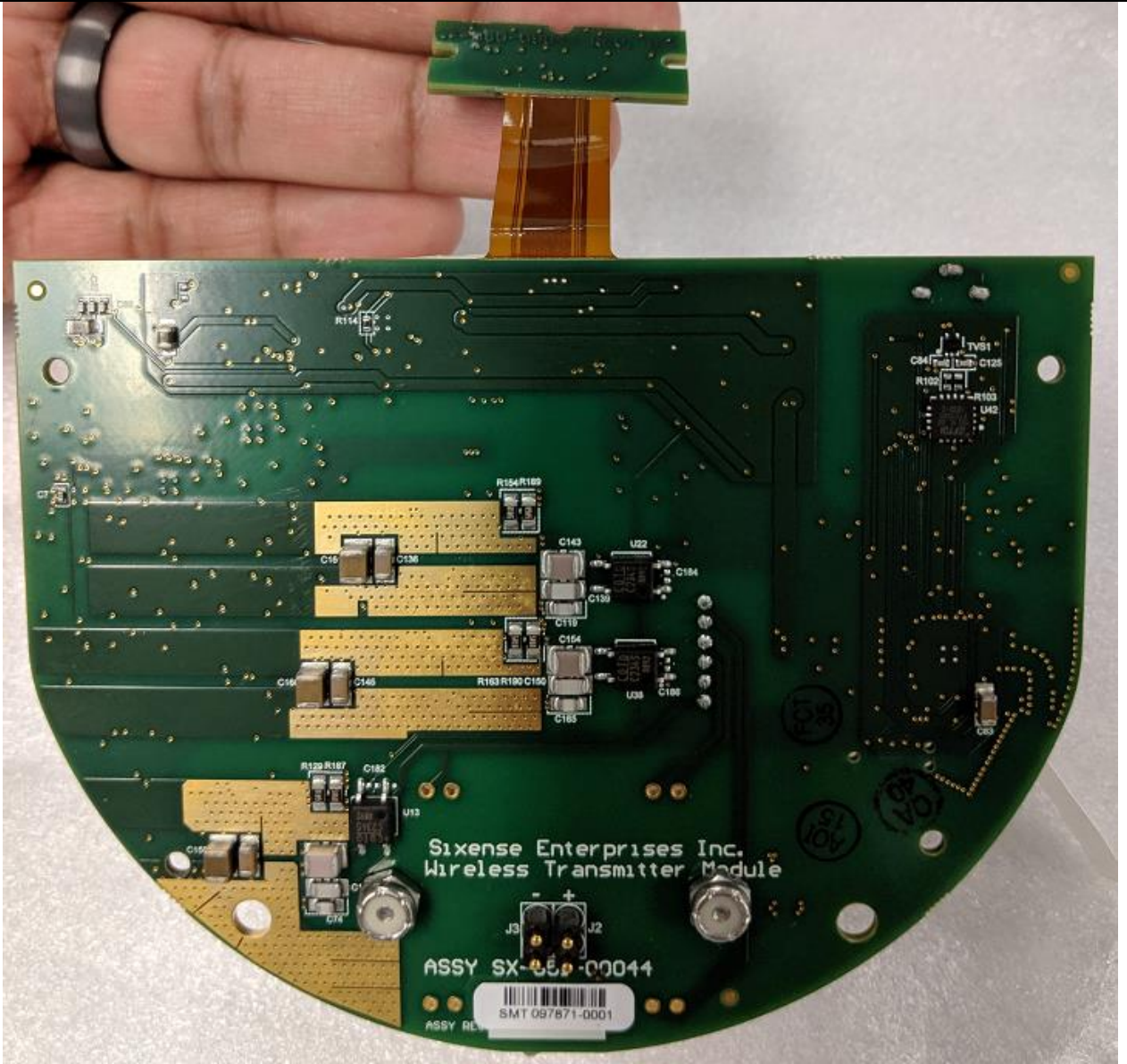


PCBA  
Front





PCBA  
Back



Open

