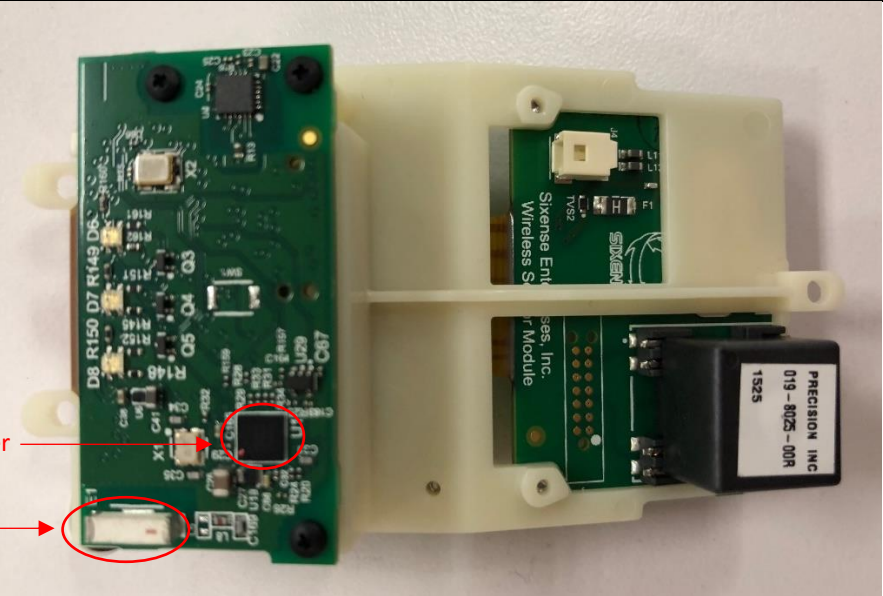
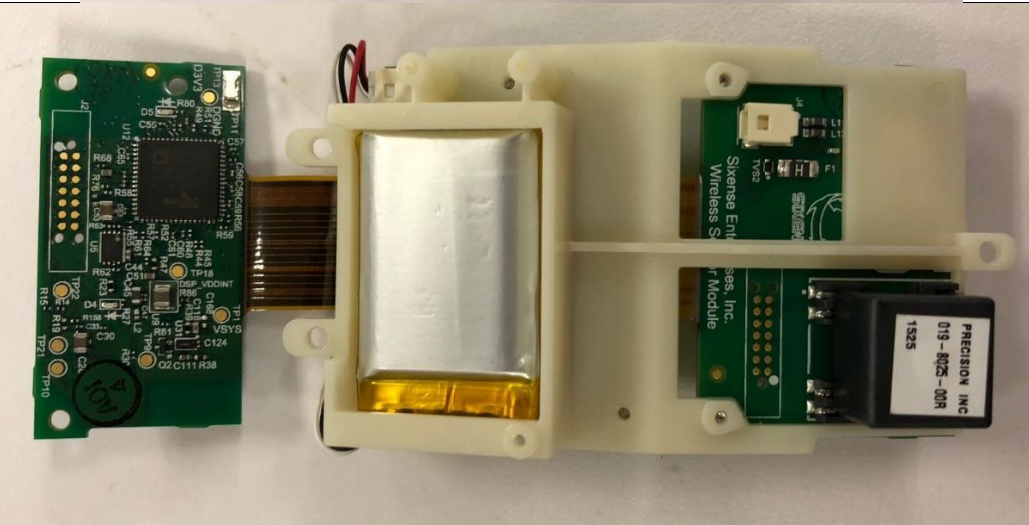

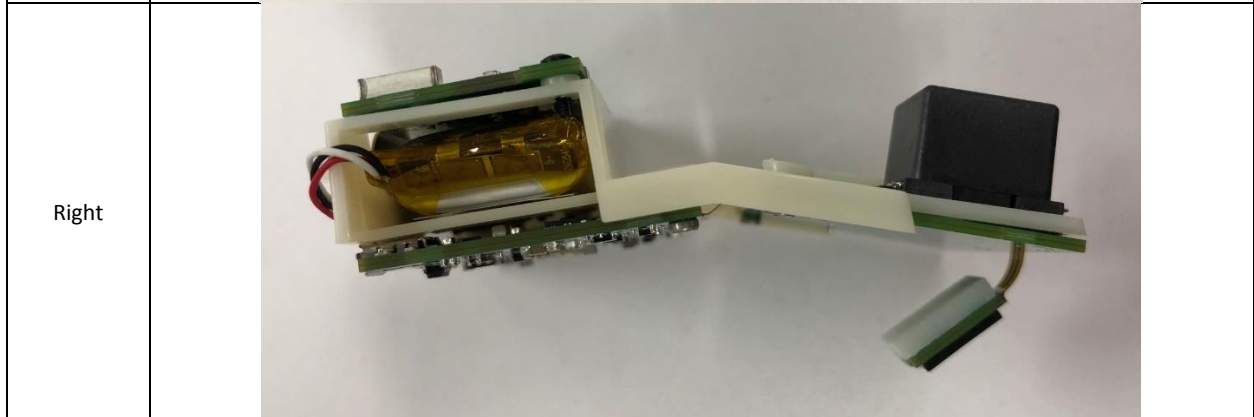
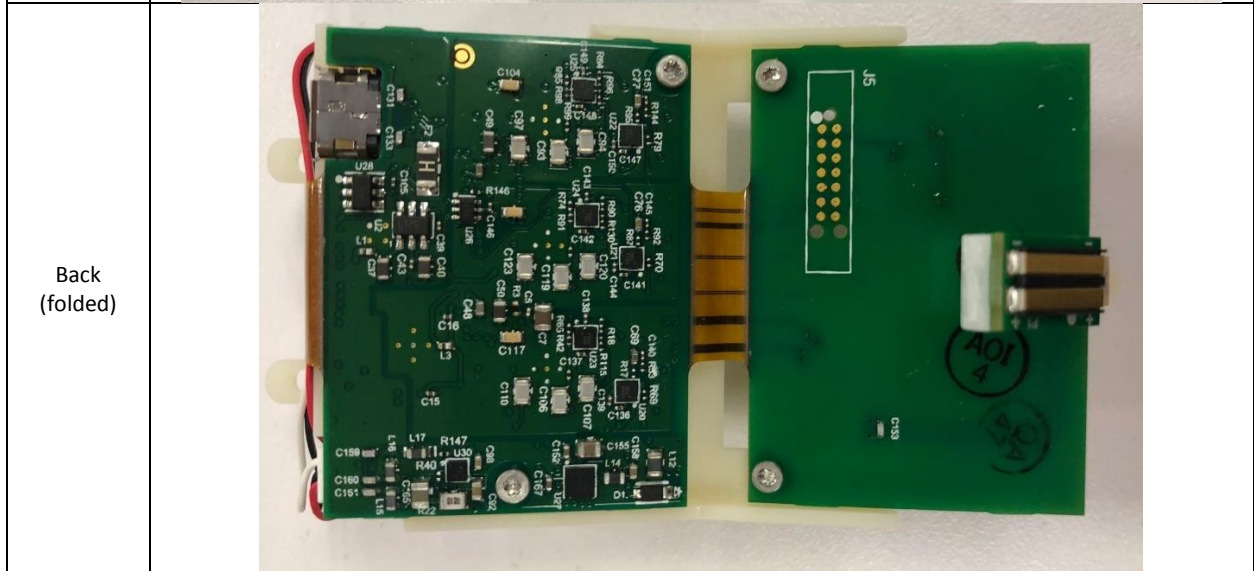
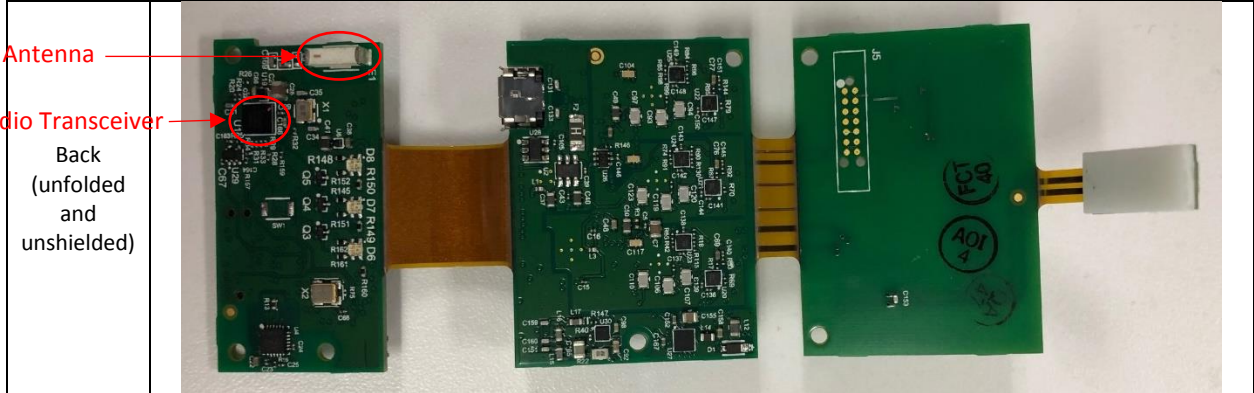


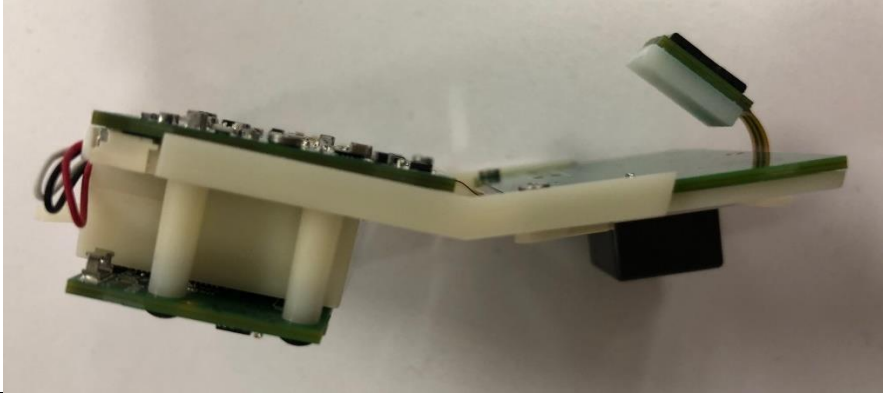
Internal Photos

WSM

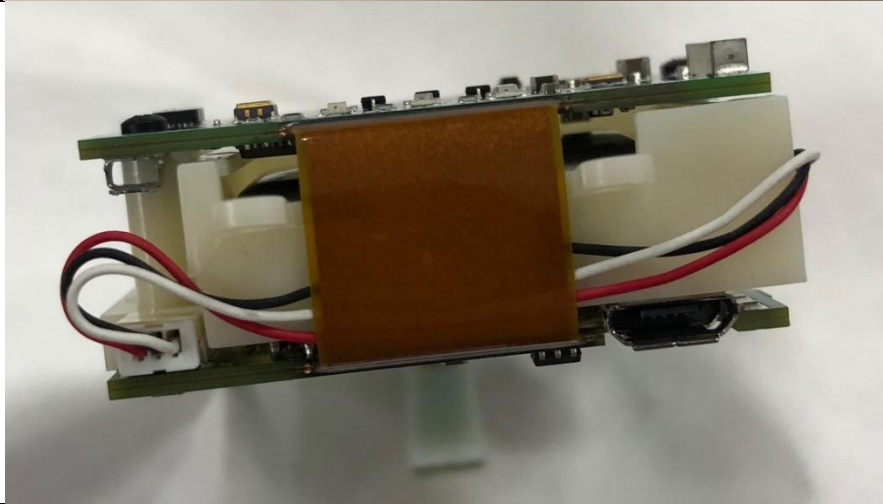
View	Photo
<p>Front (folded)</p>	 <p>Radio Transceiver</p> <p>Antenna</p>
<p>Front (unfolded)</p>	
<p>Front (unfolded and unshielded)</p>	




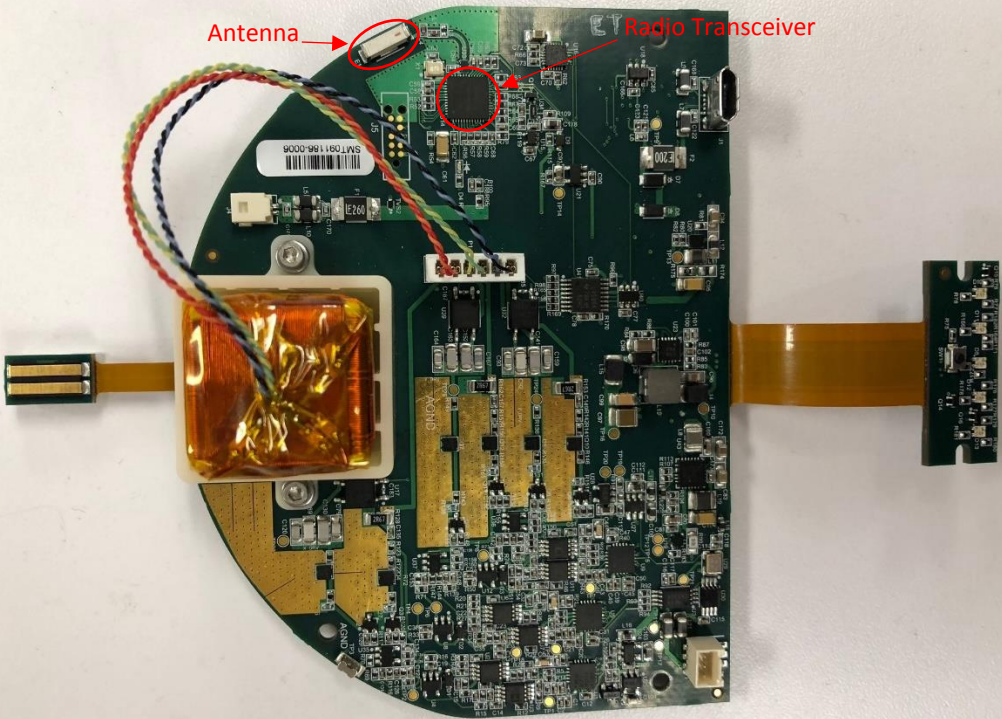
Left



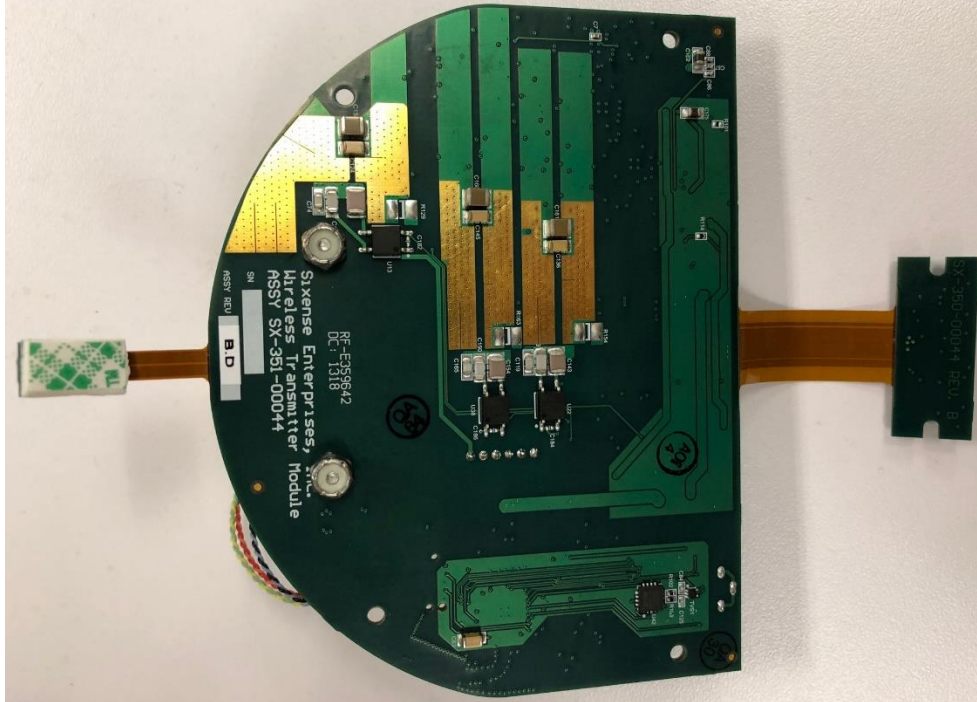
Top



WTM

View	Photo
Front (in case)	 <p>The photograph shows the interior of a black plastic case. A green printed circuit board (PCB) is mounted, featuring various electronic components. A blue cylindrical battery is positioned on the right side. A small antenna is located at the top left. A radio transceiver chip is highlighted with a red circle and a red arrow. A barcode label with the number 9000 9811 6011 11 is visible. A yellow ribbon cable is connected to a component on the right. The text 'Antenna' and 'Radio Transceiver' are written in red with arrows pointing to their respective parts.</p>
Front (out of case)	 <p>This photograph shows the PCB from the previous image without the battery and other case components. The antenna and radio transceiver are again highlighted with red circles and arrows. A barcode label with the number SM1091186-0004 is visible. The text 'Antenna' and 'Radio Transceiver' are written in red with arrows pointing to their respective parts.</p>

Back



Battery

