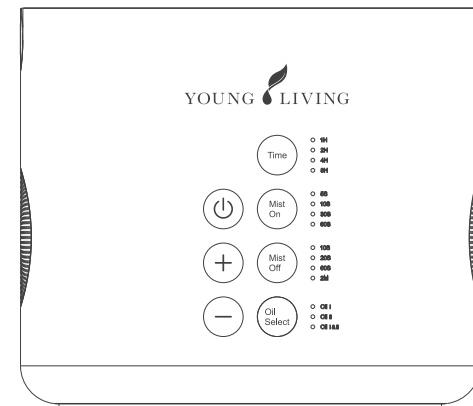




1538 W. Sandalwood Drive
Lehi UT 84043
[www. YoungLiving.com](http://www.YoungLiving.com)



Duet Diffuser



Operation Manual

Please read this user manual carefully before using this product

Overview

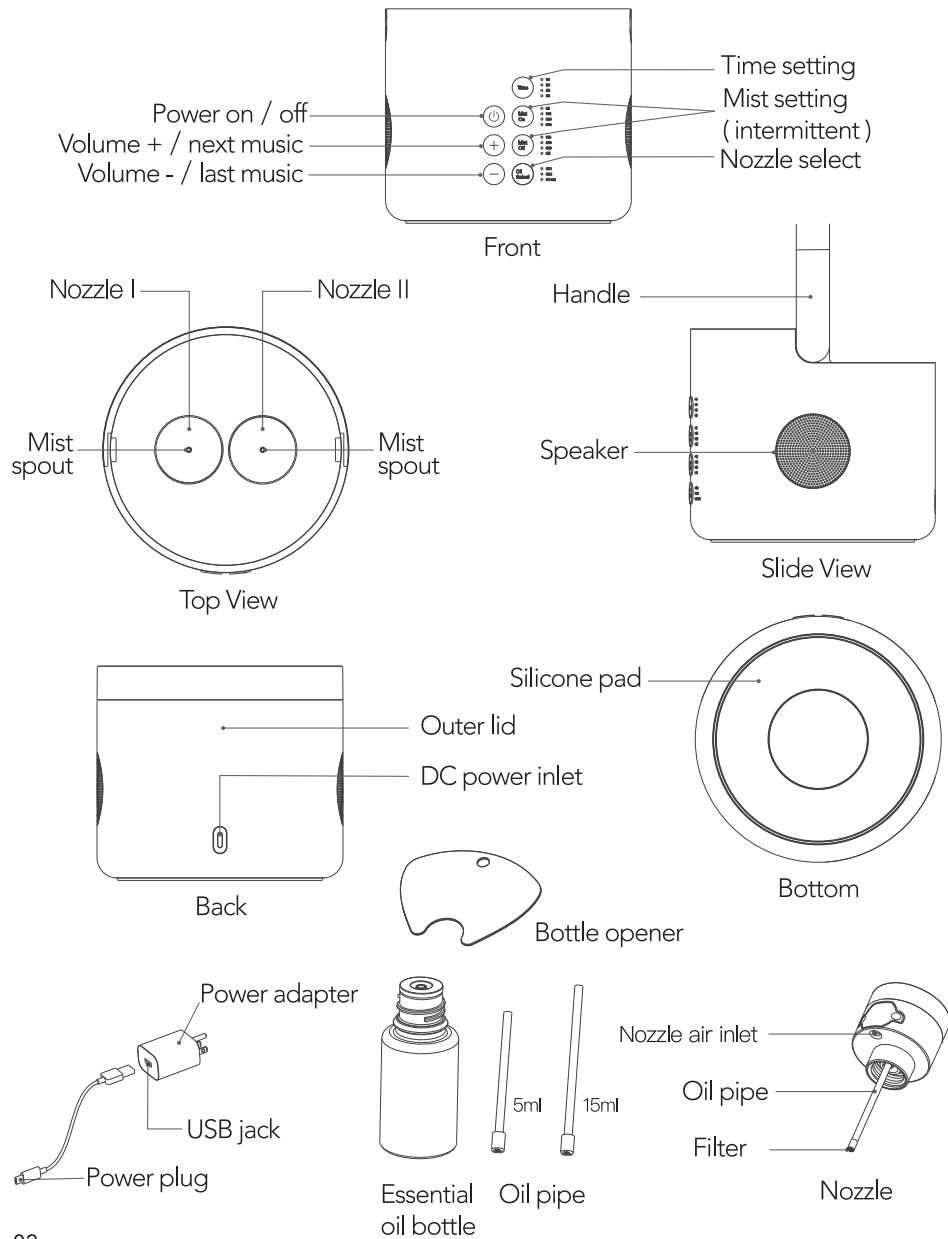
Young Living's Duet Diffuser functions as an atomizer and aroma diffuser in one simple-to-use product. The Duet Diffuser design reflects Young Living's dedication to providing high-quality essential oils. It disperses Young Living essential oils into the air, and releases the constituents found in essential oils. It is custom designed with up to eight hours of intermittent run diffusion and automatic shut-off function. It can transform any space into a spa-like atmosphere.

Contents

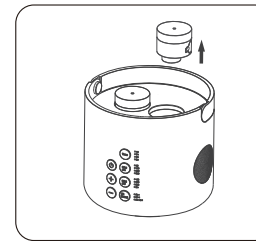
Duet Diffuser, AC Power Adaptor, and Operation Manual

2×Empty Essential Oil Bottles, 3×5ml Oil Pipes, 3×15ml Oil Pipes,
Bottle Opener

Diagram

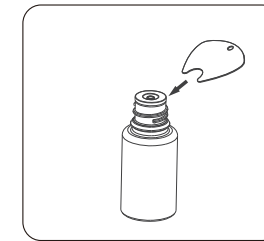


Operating Instructions

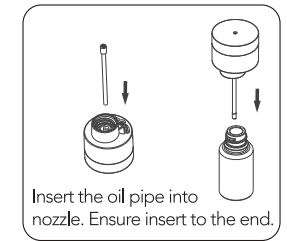


1. Press down the nozzle together with bottle. Let it eject out and remove it.

Note: there is only nozzle without bottle in the new unit.

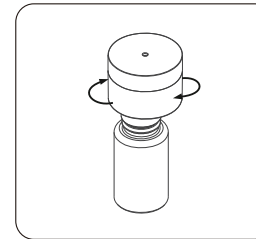


2. Use the bottle opener to remove the bottle inner reducer cap.

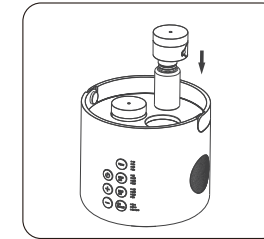


Insert the oil pipe into nozzle. Ensure insert to the end.

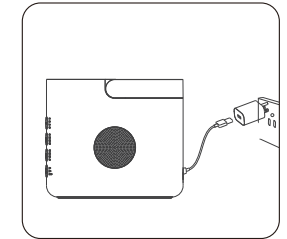
3. Insert the nozzle with oil pipe into essential oil bottle.



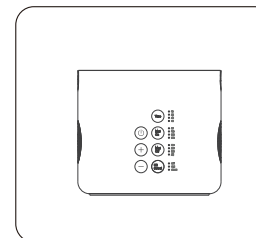
4. Secure nozzle to the essential oil bottle by rotating the nozzle clockwise.



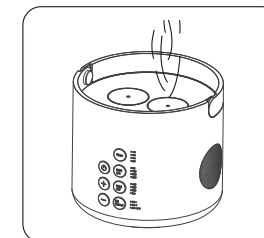
5. Press the nozzle with essential oil bottle into the slot vertically in the direction of the arrow.



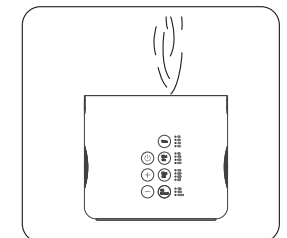
6. Connect the power supply.



7. Turn the power on/off button to start the diffuser.










8. The diffuser will begin to diffuse from the mist hole. Essential Oils with a higher viscosity will diffuse differently. You may or may not see the mist depending on which oil is diffusing.



9. Operate different functions according to manual.

Functionality

Button	Function
	Press 1 time to turn the unit on. The default setting is 1 hour working with 5s mist on and 10s mist off. Press 2 times to turn the unit off. Press 3 seconds to disconnect Bluetooth connection when the unit is working.
	Press 1.5 seconds to increase volume when the music is on. Press 2 times to jump to next music.
	Press 1.5 seconds to decrease volume when the music is on. Press 2 times to jump to last music.
	While unit is running: Press 1 time to set up 1 hour running time. Press 2 times to set up 2 hours running time. Press 3 times to set up 4 hours running time. Press 4 times to set up 8 hours running time. (Default setting is 5s mist on and 10s mist off.) The unit will shut off automatically when the running time is up or the essential oil is empty.
	While unit is running: Press 1 time for intermittent mist 5 seconds on. Press 2 times for intermittent mist 10 seconds on. Press 3 times for intermittent mist 30 seconds on. Press 4 times for intermittent mist 60 seconds on.
	While unit is running: Press 1 time for intermittent mist 10 seconds off. Press 2 times for intermittent mist 20 seconds off. Press 3 times for intermittent mist 60 seconds off. Press 4 times for intermittent mist 2 minutes off.
	While unit is running: Press 1 time to select nozzle I to mist. Press 2 times to select nozzle II to mist. Press 3 times to select nozzle I&II to mist.

***Bluetooth function:** While the unit is running, turn on the Bluetooth setting in the phone. Find "Duet Diffuser" and connect it. Then play the music in the unit.

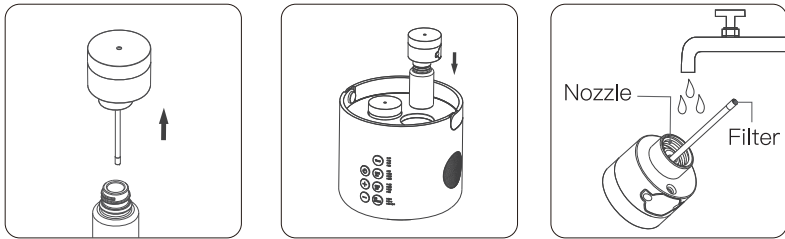
Safety and Care Instructions

Please read and follow these safety guidelines closely to ensure safe operation of the diffuser.

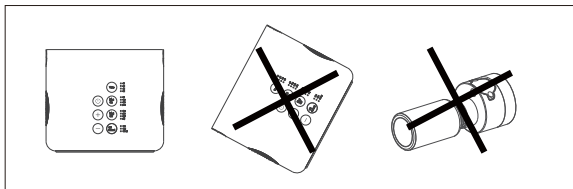
1. Unplug the diffuser immediately and discontinue use in the event of smoke or a burning smell.
2. Never wrap the adaptor with cloth, paper, etc. Such actions may result in damage to the diffuser or fire.
3. Never touch the adaptor with wet hands; electric shock or injury may occur.
4. Do not disassemble or attempt to repair the diffuser; this will void the warranty.
5. Never immerse the diffuser in water.
6. Unplug the adaptor when refilling, cleaning, or moving the diffuser.
7. Keep the diffuser out of reach of children.
8. Do not remove the nozzle during operation.
9. Do not place your fingers on mist spout during operation; this may result in injury.
10. Do not place acidic or alkaline chemicals in the nozzle.
11. Use only the included power adaptor provided in the packaging or by Young Living.
12. Do not shake the diffuser.
13. Any damage caused by the user does not qualify for replacement by Young Living.
14. Do not use metal objects to clean the nozzle; use only a cotton swab or cloth dipped in rubbing alcohol or a neutral detergent.
15. Never use the product for purposes other than those listed in this manual.
16. If the unit will not be used for an extended period or needs to be relocated, unplug the power adaptor, remove the essential oil bottle and wipe the nozzle clean before storage.
17. Clean the nozzle before switching to different essential oils.
18. Use only 100-percent pure, natural essential oils. Artificial, synthetic, or impure oils and fragrances can cause harm to the product.
19. When unplugging the power adaptor, pull from the adaptor plug instead of pulling the wire.
20. Avoid placing the product under direct sunlight, close to a refrigerator or fan, or in a hot environment.
21. Place the product on a flat and solid surface instead of uneven and /or unstable one like carpets or rugs etc.

Cleaning and Maintenance

- To avoid altering the aroma of different essential oils, highly recommend to use individual nozzle only for single essential oil. Spare nozzles are available for purchase.
- Clean nozzle weekly or more if diffuser is used frequently.
- Press Mist On button for 3 seconds, so that the diffuser will turn on the auto-clean mode. Then diffuser will automatically clean both nozzles, prevent the deposited essential oil block up the nozzles, and resume the atomization capacity of the nozzles. Highly recommend to auto-clean and maintain the nozzles 2-3 times a week.
- If use frequently, recommend to clean nozzles 1-2 times weekly with alcohol, according to below instruction:



- Remove the nozzle from diffuser. Unscrew the nozzle from the essential oil bottle.
- Exchange the essential oil bottle with 75% alcohol bottle. Secure nozzles and press into diffuser. Turn on the diffuser. Let it run 1 hour and turn it off.
Note: Two included empty bottles are for cleaning purpose.
- Then unscrew the nozzles off again. Rinse the nozzles from bottom. Pull out and rinse the filter. Use dry cloth to wipe them clean.



Do not tilt or set on side when oil is attached to the nozzle. Leakage of oil into the diffuser or nozzle may damage the diffuser.

Troubleshooting

Issue	Possible Cause	Solution
Unit does not turn on	Is the power cord connected properly?	Check connections on both ends of the power cord to ensure proper connecting to unit and power outlet
LED light and nozzle work, but no oil is diffusing or the diffusing is unnormal	<ol style="list-style-type: none"> Is the nozzle securely attached? Is the oil bottle empty or lower than the end of the oil pipe? Is the oil pipe securely attached to the nozzle? Is there any impurity substance block the nozzle? 	<ol style="list-style-type: none"> Remove the nozzle from the unit and re-insert until a secure connection has been made Add more essential oil or change out the bottle Re-insert the oil pipe into the nozzle Clean the nozzle according to Cleaning and Maintenance instruction
LED light turns on but nozzle does not work	Is the unit stuck in pause or rest mode?	Wait for the pause mode end, or press the mist setting to reset the nozzle
Oil is leaking from nozzle	Were the nozzle and essential oil tilted prior to use?	<ol style="list-style-type: none"> Clean nozzle following instruction of Cleaning and Maintenance Re-insert nozzle into diffuser. If the nozzle has been damaged, additional nozzles are available for purchase
Weak Bluetooth signal	Is the unit on metal table and impacting the Bluetooth signal?	Put away from metal table
Bluetooth cannot connect	Is the unit connecting with other phone?	Press the power on/off button 3 seconds to disconnect the Bluetooth or disconnect that phone Bluetooth connection

Specifications

Product Name: Duet Diffuser

Item No.: PZ-PA051

Dimensions: Φ 145mm x 126.5mm

Material: Metal, ABS, PP

Weight: 1.36kg

Power Source: DC 5V 2A

Power: 10W

Essential Oil: Young Living 5ml/ 10ml/ 15ml natural oil

Coverage Area: 60 sq feet

Diffusion Run Time: 1H/ 2H/ 4H/ 8H intermittent

Environment: Indoor

Young Living Diffuser Warranty

Young Living Essential Oils (YLEO), 1538 W. Sandalwood Drive, Lehi UT 84043, subject to the exclusions contained below, warrants its diffuser to be free from defects in materials and workmanship under normal consumer usage for a period of 12 calendar months from the date of original purchase.

This Warranty Does Not Cover:

1. Defects or damage resulting from use of the product in other than its normal and customary manner;
2. Defects or damage from misuse, accident, or neglect;
3. Defects or damage from use of natural oils other than those supplied or sold by Young Living Essential Oils or an authorized distributor;
4. Defects or damage from use of materials other than essential oils;
5. Defects or damage from improper testing, operation, maintenance, installation, adjustment, or any alteration or modification of any kind;
6. Breakage or damage caused by use of other than the specified voltage;

7. Products disassembled or repaired by anyone other than a Young Living Essential Oils' authorized agent so as to adversely affect performance or prevent adequate inspection, verification, and testing to verify any warranty claim. If there are any signs the diffuser had been opened, the warranty will be void;
8. Products with labels removed or illegible serial numbers;
9. Marring such as scratches on any plastic surfaces and externally exposed parts resulting from normal use;
10. Damage resulting from normal wear and tear;
11. Damage resulting from the use of metal tools to clean the unit.

This limited warranty is the buyer's exclusive remedy, applies to new diffusers purchased from Young Living Essential Oils, and is nontransferable. Please retain your original purchase receipt. In the event of a warranty claim or return for repair, a copy of the purchase receipt should accompany the diffuser when shipped to YLEO.

To make a warranty claim or to purchase spare parts, please contact the Young Living Member Services Department at 1.800.371.3515 (6 a.m.–8 p.m., MT, M–F and 7 a.m.–5 p.m., MT, Saturday). If it is determined by Member Services that the diffuser is to be shipped back to YLEO, the buyer will need to send the product back in its original box (if available) with the power adaptor, a copy of the original purchase receipt, and the YLEO Return Merchandise Authorization (RMA)# (displayed clearly on the receipt), which will be provided by Member Services.

U.S. Shipping:

Young Living Essential Oils Returns/ RMA# _____
142 East 3450 North
Spanish Fork, UT 84660

For all other market address and contact information, visit YoungLiving.com.

NOTICE:

Please be sure to complete the YLEO return form and send back all the items listed for timely processing of your return. If YLEO has determined, based on an evaluation and inspection of the diffuser, that the defect or malfunction is covered under warranty, YLEO will send a replacement diffuser at no additional charge.

FCC ID: 2AQU4-PZPA051

IC ID: 24212- PZPA051

CAN ICES-3(B)/NMB-3(B)

This appliance can be used by children aged from 8 years and above and persons with reduced physical, sensory or mental capabilities or lack of experience and knowledge if they have been given supervision or instruction concerning use of the appliance in a safe way and understand the hazards involved. Children shall not play with the appliance. Cleaning and user maintenance shall not be made by children without supervision.

This appliance is not intended for use by persons (including children) with reduced physical, sensory or mental capabilities, or lack of experience and knowledge, unless they have been given supervision or instruction concerning use of the appliance by a person responsible for their safety. Children should be supervised to ensure that they do not play with the appliance.

Note: This equipment has been tested and found to comply with the limits for a Class B digital device, pursuant to part 15 of the FCC Rules. These limits are designed to provide reasonable protection against harmful interference in a residential installation. This equipment generates, uses and can radiate radio frequency energy and, if not installed and used in accordance with the instructions, may cause harmful interference to radio communications. However, there is no guarantee that interference will not occur in a particular installation. If this equipment does cause harmful interference to radio or television reception, which can be determined by turning the equipment off and on, the user is encouraged to try to correct the interference by one or more of the following measures:

- Reorient or relocate the receiving antenna.
- Increase the separation between the equipment and receiver.
- Connect the equipment into an outlet on a circuit different from that to which the receiver is connected.

—Consult the dealer or an experienced radio/TV technician for help.

Modification: Any changes or modifications not expressly approved by the grantee of this device could void the user's authority to operate the device.

This device contains licence-exempt transmitter(s)/receiver(s) that comply with Innovation, Science and Economic Development Canada's licence-exempt RSS(s). Operation is subject to the following two conditions:

- (1) This device may not cause interference.
- (2) This device must accept any interference, including interference that may cause undesired operation of the device.

Le présent appareil est conforme aux CNR d'Industrie Canada applicables aux appareils radio exempts de licence. Son fonctionnement est soumis aux conditions suivantes :

- (1) l'appareil ne doit pas causer d'interférence.
- (2) l'appareil doit accepter toute interférence, y compris une interférence pouvant entraîner un fonctionnement non désiré.

FCC & IC Radiation Exposure Statement:

This equipment complies with FCC and Canada radiation exposure limits set forth for an uncontrolled environment. This equipment should be installed and operated with a minimum distance of 20cm between the radiator and your body. This transmitter must not be co-located or operating in conjunction with any other antenna or transmitter.

Déclaration d'IC sur l'exposition aux radiations:

Cet équipement est conforme aux limites d'exposition aux radiations définies par le Canada pour des environnements non contrôlés. Cet équipement doit être installé et utilisé à une distance minimum de 20 cm entre l'antenne et votre corps. Cet émetteur ne doit pas être installé au même endroit ni utilisé avec une autre antenne ou un autre émetteur.

Manufacturer:

Puzhen Life Co., Ltd

www.puzhen.com

Unit 1112-1116, 11/F, Delta House, 3 On Yiu Street, Shatin, HongKong

Duet Diffuser

PZ-PA051 DC 5V 10W

