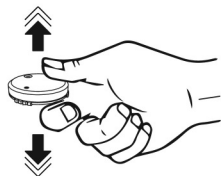


## USING YOUR QSun (AS STAND-ALONE DEVICE)

Once you're finished with the initial setup of QSun, you may now use it on its own without the app.

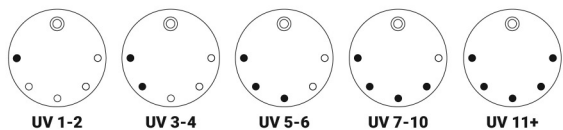
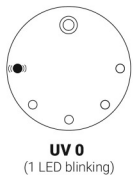
**Track sun exposure:** At the start of each day, shake your QSun device face up to activate it until LED lights up or connect to the app and tap on the "Track Sun Exposure" button. After activation, when QSun is exposed to UV, tracking your sun exposure will automatically start counting down.



**Shake up and down until LED(s) turns on**  
Daily activation / Check UV Index

**Check the UV Index:** Shake your QSun device to check the UV index. Make sure the UV sensor is not covered. The number of LEDs that light up indicates the UV intensity.

- UV 0:** 1 LED blinking
- UV 1-2 (Low):** 1 LED on
- UV 3-5 (Moderate):** 2 LEDs on
- UV 6-7 (High):** 3 LEDs on
- UV 8-10 (Very High):** 4 LEDs on
- UV 11+ (Extreme):** 5 LEDs on



Note: When you shake your QSun at the start of the day to activate it, it will also give you a UV reading.

2

## TROUBLESHOOTING II

### Connecting your phone to a different QSun

Your phone will only connect to one QSun device at a time. To change the QSun device that your phone connects to via the QSun app:

- Click the sidebar (top left hand corner) > Device Settings > Reset > Connect to a new QSun Device
- Tap the BLE button on the homepage of the QSun app and select "Connect to QSun Device".

### Unable to connect to a QSun device for the first time

Ensure you have the following:

- Latest version of the QSun app.
- Bluetooth on your smartphone is ON.
- QSun is in range. (Be within 15 feet) Try moving it closer to the smartphone.
- If possible, move to another location without other interfering Bluetooth devices.

### Unable to connect to a previously paired QSun device

If you have connection problems, it may be fixed by resetting your QSun device. To reset your QSun device and QSun app:

- Remove the battery from the QSun device and reinsert it again.
- Clear QSun from your smartphone Bluetooth device list:  
**iOS:** Navigate to Settings > Bluetooth. Bluetooth must be switched ON for the list of paired devices to be displayed. To remove QSun, select the circular "i" icon to the right of the QSun device name. Click "Forget this Device" > "Forget Device."  
**Android:** From the home screen, touch the applications tab (located on the bottom of the screen). Settings > Connections > Bluetooth Settings > Select the gear icon next to the paired QSun > Unpair. Turn off and then back on your phone.
- Go to the QSun app, tap on the sidebar button > Device Settings > Reset > Connect to a new QSun Device

If you continue to experience technical difficulties, please contact: [support@qsun.co](mailto:support@qsun.co). We will do our best to respond to your email in a timely manner.

6

## REGULATORY NOTICES

### FCC COMPLIANCE STATEMENT

This device complies with Part 15 of the FCC Rules. Operation is subject to the following two conditions: 1) This device may not cause harmful interference, and 2) this device must accept any interference received, including interference that may cause undesired operation.

### INFORMATION TO USER:

This equipment has been tested and found to comply with the limits for a Class B digital device, pursuant to part 15 of the FCC Rules. These limits are designed to provide reasonable protection against harmful interference in a residential installation. This equipment generates, uses and can radiate radio frequency energy and, if not installed and used in accordance with the instructions, may cause harmful interference to radio communications. However, there is no guarantee that interference will not occur in a particular installation. If this equipment does cause harmful interference to radio or television reception, which can be determined by turning the equipment off and on, the user is encouraged to try to correct the interference by one or more of the following measures:

- Reorient or relocate the receiving antenna.
- Increase the separation between the equipment and receiver.
- Connect the equipment into an outlet on a circuit different from that to which the receiver is connected.
- Consult the dealer or an experienced radio/TV technician for help.

### RF Exposure Information

This equipment complies with FCC radiation exposure limits set forth for an uncontrolled environment.

### WARNING:

The grantee is not responsible for any changes or modifications not expressly approved by the party responsible for compliance. Such modifications could void the user's authority to operate the equipment.

### IC COMPLIANCE STATEMENT

This device complies with Industry Canada license-exempt RSS standard(s). Operation is subject to the following two conditions: 1) this device may not cause interference, and 2) this device must accept any interference, including interference that may cause undesired operation of the device.

Le présent appareil est conforme aux CNR d'Industrie Canada applicables aux appareils radio exempts de licence. L'exploitation est autorisée aux deux conditions suivantes : 1) l'appareil ne doit pas produire de brouillage, et 2) l'utilisateur de l'appareil doit accepter tout brouillage radioélectrique subi, même si le brouillage est susceptible d'en compromettre le fonctionnement.

### CAN ICES-3 (B)/NMB-3(B)

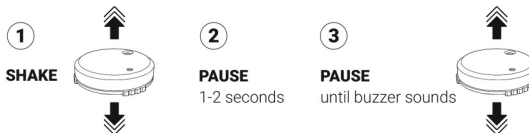
#### RF Exposure Statement

This equipment complies with ISED RSS-102 radiation exposure limits set forth for an uncontrolled environment.

Cet équipement est conforme avec ISED RSS-102 des limites d'exposition aux rayonnements définies pour un environnement non contrôlé.

7

**Apply Sunscreen:** Shake (LEDs turn on to indicate the UV index), pause, and shake QSun again to let it know you've applied sunscreen. The buzzer will sound and all LEDs will light up. Your Time to Burn timer will adjust accordingly.



**Tracking mode:** When QSun is tracking your sun exposure, the LEDs will indicate how much time is left to exceed your daily exposure. To find the exact remaining time check the app.

**More than 15 minutes:**  
One LED blinks once every 10s



**Less than 15 minutes:**  
Two LED blinks once every 10s



**Exceed alert:** When exceed your sun exposure, you need to seek more sun protection. The buzzer will sound 3 times and all the LEDs will light up 3 times consecutively. You'll receive the buzzer alerts once every 1 minute for up to 5 minutes (you may adjust the time interval and duration on the app) or you can shake QSun to deactivate the alert. Also, you can turn the alert off through the app.



**Alerts every minute up to 5 minute**  
Exceed your sun exposure

If you didn't apply any sunscreen before exceed your sun exposure, this means you've used up your natural protection of the day. You'll need to immediately apply sunscreen and re-apply all day, as recommended by your sunscreen's instructions.

3

Need more help? For a detailed user manual, please visit:  
[www.qsun.co/manual](http://www.qsun.co/manual)

or

If you experience unsolvable technical difficulties,  
 please contact: [support@qsun.co](mailto:support@qsun.co)

Other ways to keep up-to-date and get additional support:

 [facebook.com/QSunSafe](https://facebook.com/QSunSafe)

 [QSun.co/contact](http://QSun.co/contact)

**ACTIVATED THE QSUN APP PRO**

Contact [support@qsun.co](mailto:support@qsun.co) to get your access code for a free subscription to the QSun App Pro.

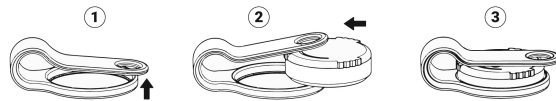
**DISCLAIMER STATEMENT**

This product is not a medical device, and is not intended to diagnose, treat, cure, or prevent any disease. The accuracy of QSun is not intended to match medical devices or scientific measurement devices, but is intended to give you the best information available in a wearable device technology.

 **QSun IS NOT TOY OR MEDICAL DEVICE**  
 WARNING choking hazard - small parts.

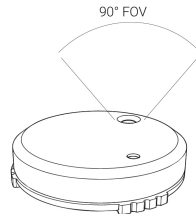
**USING DETACHABLE CLIP**

Put the QSun device into its detachable clip by sliding it in between the circular clip. Make sure the top of the device faces upwards. Adjust the device until it clasps into place within the circular band.

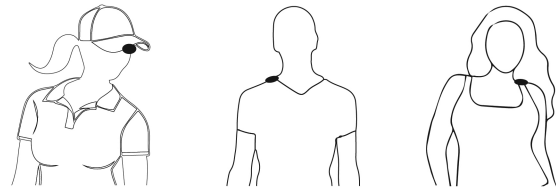


**Best Wearing Positions**

You can clip QSun onto your clothing and accessories. To get the most accurate readings, make sure the sensor on the front of the device is facing the sun.



Make sure front of the device is facing the sun. You may need to change the location based on the sun direction.

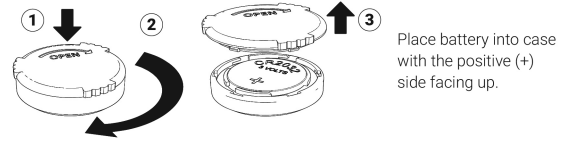


**QUICK START GUIDE**

Thank you for choosing QSun, your little wearable companion that tracks your sun exposure to help you prevent skin damage while maintaining healthy vitamin D levels.

**GETTING STARTED**

1. Insert the battery into QSun. Remove the lid from the case by rotating the lid clockwise. Place the battery, making sure the positive (+) end is facing up towards you. To place the lid back on, align the grooves of the lid to the case and rotate counterclockwise.



2. Ensure your smartphone Bluetooth (BLE) is ON via your phone settings (Location 'GPS' needs to be enabled for Bluetooth Low Energy Scanning on Android phone).

3. Download the latest version of the QSun app from App Store / Google Play.

4. Create an account and set up your profile.

5. Tap the BLE button (⌘) on the home screen of the QSun app and select "Connect to QSun Device". When prompted, select the QSun device.

6. Once connected, the buzzer will sound and the LED lights on QSun will light up one at a time. Your QSun app will display "Live Data".

**QSUN SPECIFICATIONS**

- Dimensions: 1.1x1.1x0.35 in, 28x28x9 mm; Weight: 7g
- Battery: Non-rechargeable Battery (CR2032)
- UV Sensor: Range 0 to 11+, UVA/UVB (+/- 0.5 UVI)
- Connectivity: BLE 4.2 (Bluetooth low energy)
- Indicators: Buzzer (65dB @ 10cm), White LEDs (Cool 6020K)
- Datalog: 256-KB flash memory
- Shaking sensor: 3-Axis Accelerometer
- Operating temperature: -23° to +104° F (-10° to +40° C)
- Non-operating temperature: -26° to 122° F (-15° to +50° C)

**Battery Life**

Your QSun app will notify you when the battery of your QSun device is low and it's time to change it. With normal use, your QSun's battery should last up to 6 weeks. QSun's battery life can be shortened with heavy use.

**Attention**

- QSun and its detachable clip contains small parts, which can be a choking hazard.
- QSun is water resistant, which means it is splash-proof. To prevent liquid damage, please do not swim or shower with QSun, and submerge it under water.

**TROUBLESHOOTING I**

If your QSun device is not working properly, review our troubleshooting information below. For other problems or more details, visit [www.qsun.co/manual](http://www.qsun.co/manual).

**Connecting QSun to a different phone**

The QSun device will only connect to one smartphone at a time until the QSun device is reset. To connect your QSun device to a new phone, manually reset the QSun device by removing the battery and reinserting it.