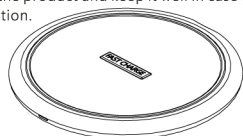


# Fast Wireless Charger User Manual

## User Manual

Welcome to use our product, which conforms to the standard of WPC (Wireless Power Consortium), is a charger of smart mobile phones and other electronic products. Allow you to experience the unlimited pleasure of using digital products easily, and make your charging more convenient and efficient.

Please read this manual carefully before using the product and keep it well in case of inspection.



### Specification and Parameter

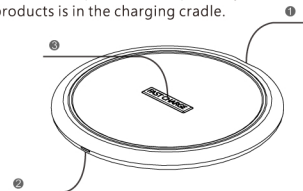
Input: 5V/2A 9V/1.67A Output: 10W (Max)  
Receiving Distance: 2mm ~ 8mm  
Percent Power Conversion: >72%  
Operating Frequency: 100KHz~145KHz  
Product Size: 98x9.5mm(3.86x0.37 inch)  
Product Weight: 82 g (0.18lb)

## Product Abridged General View

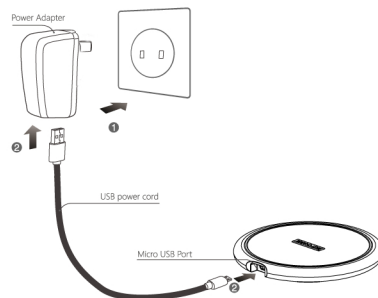
1. Micro USB port, for connecting to power adapter. It will enter the fast-charging mode when it detects that the adapter supports up to interface protocol of QC 2.0, it can input 5W or 10W compatibility at this moment;

2. LED indicator, when it's Power on reset, the LED indicator is on for 5 seconds, and then comes to be Ready Mode that the Led indicator turns off. When it detects the compatibility electronic device, the LED indicator comes to be Charging state. When it detects to be full charged, LED indicator is on for a long.

3. Charging cradle, it will be Charging state when mobile phone or compatibility electronic products is in the charging cradle.



## Abridged General View of Power Adapter Connecting



1. Please power the wireless charger with the appropriate power adapter. To ensure the most suitable output of wireless charger, the output of the power adapter should be 5V/2A or the adapter should be up to QC 2.0.

2. It will work when the power port connects to the wireless charger.

NOTE: If you don't need the wireless charger for a long time, it's recommended to unplug the power.

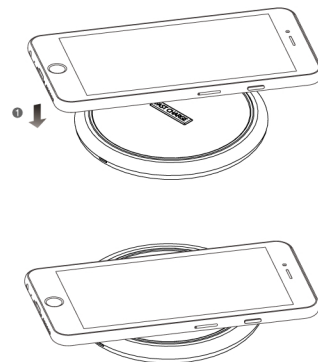
### FCC Statement

This device complies with part 15 and part 18 of the FCC Rules. Operation is Subject To the following two conditions: (1) This device may not cause harmful interference, and (2) this device must accept any interference received, including interference that may cause undesired operation. Changes or modifications not explicitly approved by the party responsible for compliance could void the user's authority to operate this equipment.

Note: this equipment has been tested and found to comply with the limits for a Class B digital device, pursuant to part 15 and part 18 of the FCC Rules.

## Mobile Phone Placed Correctly of Charging Mode

1. It will charge when putting the compatibility electronic products or mobile phone down on the charging pad. As shown below.



These limits are designed to provide reasonable protection against harmful interference in a residential installation. This equipment generates, uses and can radiate radio frequency energy and, if not installed and used in accordance with the instructions, may cause harmful interference to radio communications. However, there is no guarantee that interference will not occur in a particular installation. If this equipment does cause harmful interference to radio or television reception, which can be determined by turning the equipment off and on, the user is encouraged to try to correct the interference by one or more of the following measures:

- Reorient or relocate the receiving antenna.
- Increase the separation between the equipment and receiver.

## Attentions

1. Don't crush or collide
2. Don't disassemble or put into fire and water to avoid short circuit and leakage.
3. Don't use the wireless charger in severe high temperature, humidity, corrosive or environment of oil and gas.
4. Don't place too close to a magnetic card with a magnetic stripe or chip to avoid a magnetic card failure such as ID card and credit card.
5. Please keep the distance between the medical device and the wireless charger at least 20cm to avoid potential interference with medical devices such as cardiac pacemaker and implanted cochlea.
6. Take care of children to ensure they don't use wireless chargers as toys to avoid unnecessary accidents.

The pictures refer to the manual are all Abridged General Views and the final product is subject to physical object.  
Including: 1\* Wireless Charger, 1\* 100cm (39 inches) Power Cord, 1\* Manual.

※Power adapter is not including. If it's necessary, please purchase additional.

- Connect the equipment into an outlet on a circuit different from that to which the receiver is connected.
- Consult the dealer or an experienced radio/TV technician for help. The equipment complies with FCC radiation exposure limits set forth for an uncontrolled environment. During the operation of device a distance of 15 cm surrounding the device and 20 cm above the top surface of the device must be respected. This device complies with Part 18 of the FCC Rules. This equipment generates uses and can radiate radio frequency energy and, if not installed and used in accordance with the instructions, may cause harmful interference to radio communications. If this equipment does cause harmful interference to radio or television reception, which can be determined by turning the equipment off and on, the user is encouraged to try to correct the interference by one or more of the following measures:
  - Increase the separation between the equipment and any other radio device.
  - Connect the equipment into an outlet on a circuit different from that to which the receiver is connected.