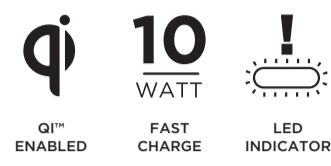


Fast Wireless Charging

AIRPAD™
FOR IPHONE

MODEL: C-053
FCC ID:2AQRP-C-053



Qi Dual Wireless Charger Set

Technical data:	
Qi Charger	USB PD, max. 30.0W
Input:	5.0W/7.5W/10.0W
Output:	2x 10.0W
Max. output:	2x 10.0W
USB Charger	
Input:	100-240V~, 50/60Hz, max. 1.5A
Output:	PD3.0, 5.0V, 3.0A, max. 15.0W
Output:	9.0V, 3.0A, max. 27.0W
Output:	15.0V, 2.0A, max. 30.0W
Output:	20.0V, 1.5A, max. 30.0W
Connection:	USB-C® socket
Operating environment:	0 °C - +35 °C, non-condensing
Storage:	-10 °C - +45 °C, non-condensing

Before using your device, please read the safety and operating instructions carefully. Keep this manual safe and pass it on to any subsequent user.

CE Declaration of conformity
Hereby Vivanco GmbH declares that the radio equipment type (Qi Dual Wireless Charger Set 615339) is in compliance with Directive 2014/53/EU. The full text of the EU declaration of conformity is available at the following internet address: www.vivanco.de.

Proper use
The power supply is used to supply power to devices that are designed for wireless charging according to the Qi standard. The product is exclusively intended for the private use according to these instructions and must not be used for commercial purposes.

Delivery contents
1x Qi Charger, 1x USB-C® Kabel, 1x USB-C® charger, 1x user manual

Safety instructions

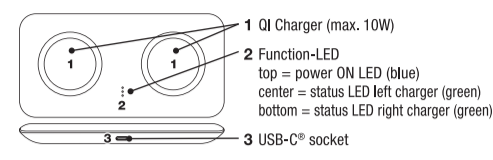
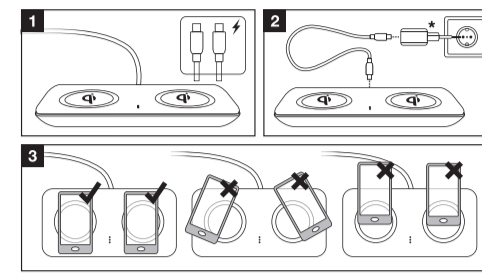
Risk of fire

- Overheating through malfunction.**
 - DO NOT use device if it seems to be damaged.
 - Only operate device with 100 – 240V~. Provided voltage and maximum current must correspond to what is indicated on the type plate of the device.
- Overheating due to improper use (Fig. 3)**
 - Only use end devices on the charging power supply that are specified for operation with a Qi charger according to the manufacturer's description.
- Overheating in too high surrounding temperature**
 - Protect the device from excessive heat, e.g. from sunlight exposure or fire.

E.g. Short circuit through penetrating moisture

- Only use in dry indoor rooms

Assembly / Operation / Disassembly



COMPATIBILITY:
iPhone™, iPhone™ XS, iPhone™ XS Max, iPhone™ XR, iPhone® 8 Plus, iPhone® 8
Samsung Galaxy S™, Galaxy S™ FE, Galaxy S™ FE 5G, Galaxy S™ FE 5G+
INPUT: 5.0V, 3.0A OUTPUT: 5.0V/3.0A/7.5W
FOR MAX CHARGING SPEED USE Quick Charge receiver
WILL ONLY CHARGE THROUGH CABLE SPEED BACK ON iOS

FCC STATEMENT:
This device complies with Part 15 of the FCC Rules. Operation is subject to the following two conditions:
(1) This device may not cause harmful interference, and
(2) This device must accept any interference received, including interference that may cause undesired operation.
Warning: Changes or modifications not expressly approved by the party responsible for compliance could void the user's authority to operate the equipment.
NOTE: This equipment has been tested and found to comply with the limits for a Class B digital device, pursuant to Part 15 of the FCC Rules. These limits are designed to provide reasonable protection against harmful interference in a residential installation. This equipment generates uses and can radiate radio frequency energy and, if not installed and used in accordance with the instructions, may cause harmful interference to radio communications. However, there is no guarantee that interference will not occur in a particular installation. If this equipment does cause harmful interference to radio or television reception, which can be determined by turning the equipment off and on, the user is encouraged to try to correct the interference by one or more of the following measures:
Reorient or relocate the receiving antenna.
Increase the separation between the equipment and receiver.
Connect the equipment into an outlet on a circuit different from that to which the receiver is connected.
Consult the dealer or an experienced radio/TV technician for help.
FCC Radiation Exposure Statement:
This equipment complies with FCC radiation exposure limits set forth for an uncontrolled environment. This equipment should be installed and operated with minimum distance 20cm between the radiator & your body.