

1. Antenna Description:

Antenna type	PIFA antenna
Model	T10A
Frequency range	2400-2500MHz, 5180-5240MHz, 5745-5825MHz
Manufacturer	Shenzhen HommPro Technology Co.,Ltd
ANT Peak Gain	2400-2500MHz: 1.25 dBi;5180-5240MHz: 1.03 dBi 5745-5825MHz: 0.92 dBi

2. Antenna Photo:

Length :17.17mm
Width:7.89mm



3. Test Equipment & Conditions

3.1 Test instrument

VSWR is tested using Agilent E5071B connected to a hand mechanism, and the status is free space.

3.2 Test environment and methods

Dark room specifications: ETS-743

TD-SCDMA test equipment: StarPoint SP6010/Agilent 8960

LTE-TDD/FDD-SCDMA test equipment: StarPoint SP8011/CMW500

WCDMA/GSM/CDMA test equipment: Agilent 8960

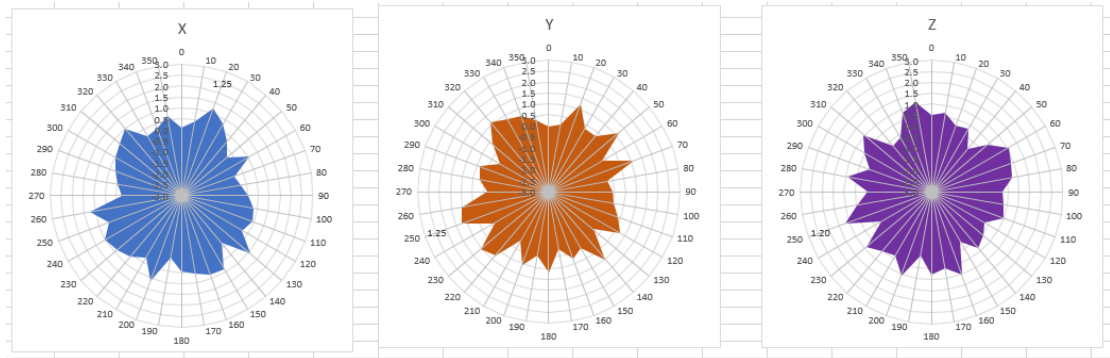
Passive efficiency testing equipment: Agilent Technologies E5071B



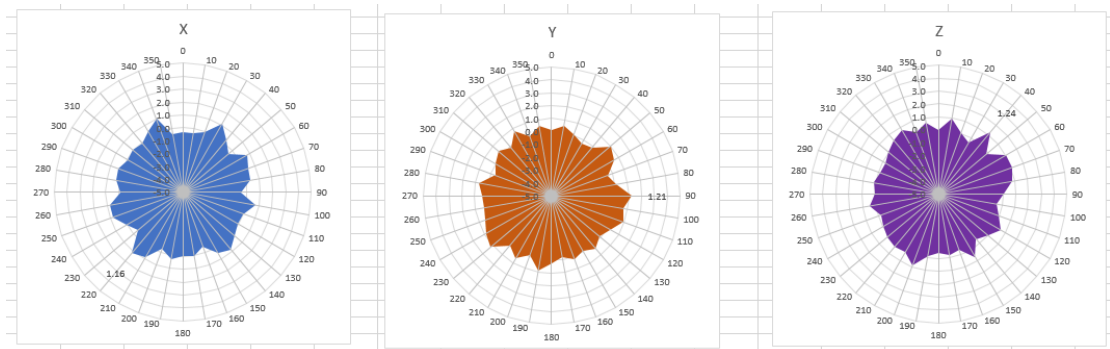
4 . Antenna Radiation Pattern



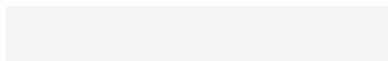
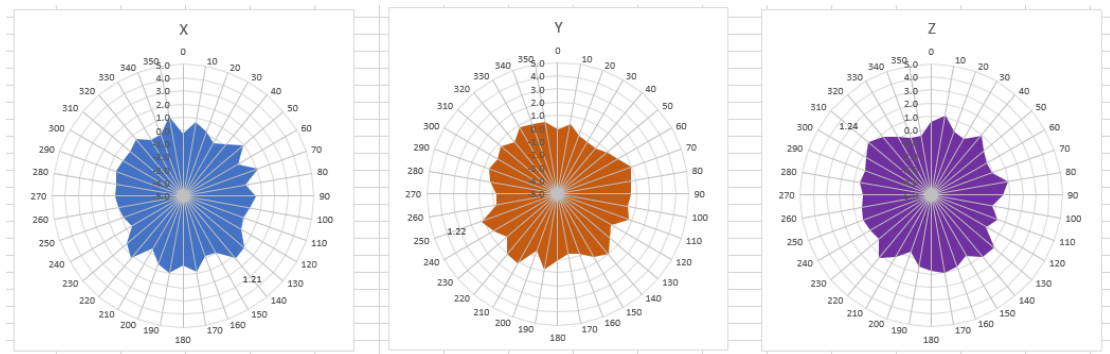
2400MHz



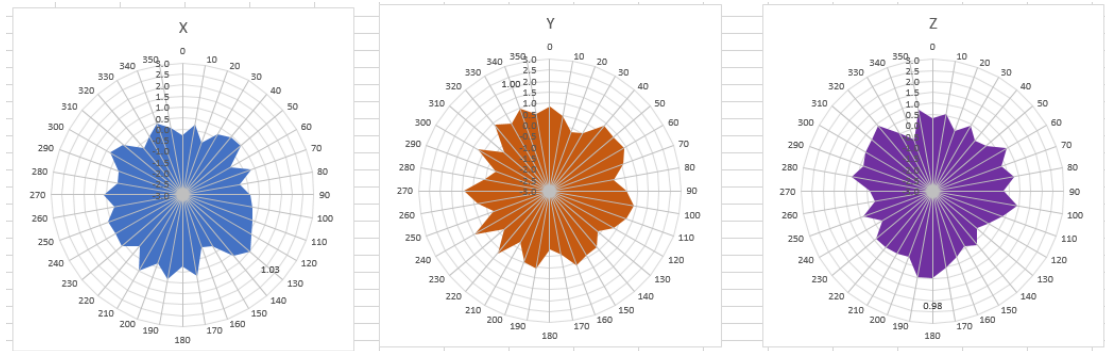
2450MHz



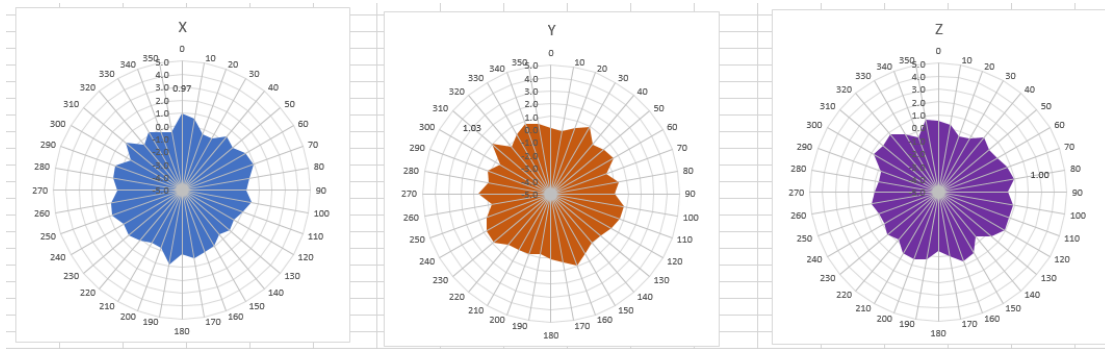
2500MHz



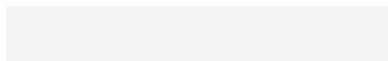
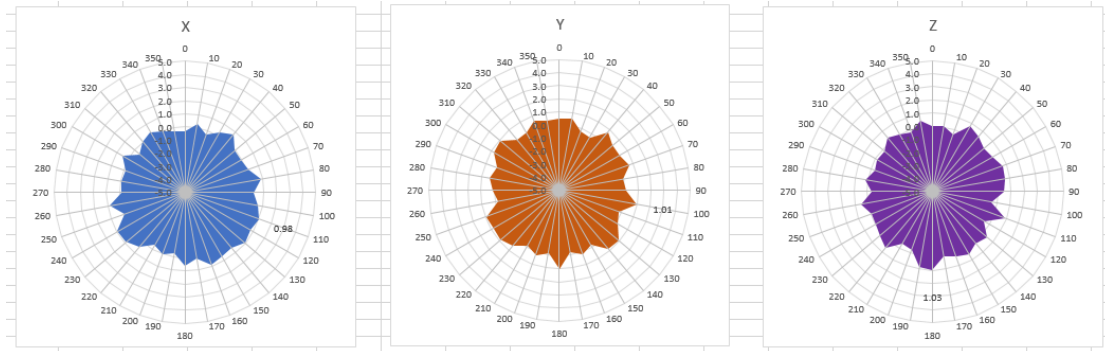
5180MHz



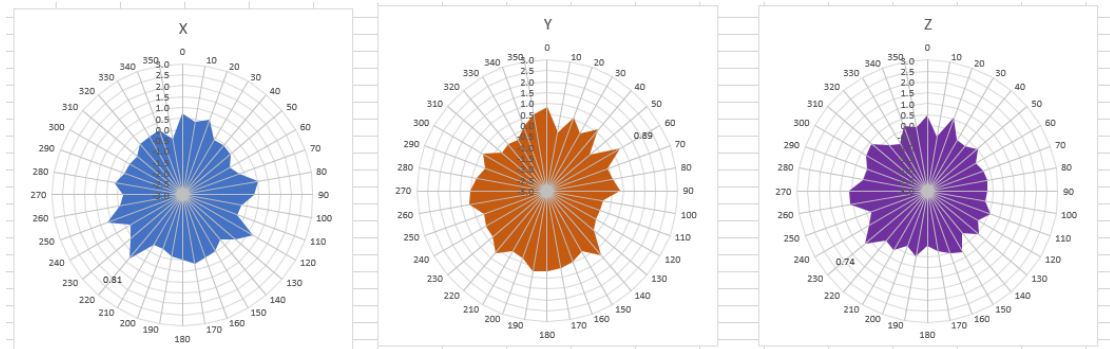
5220MHz



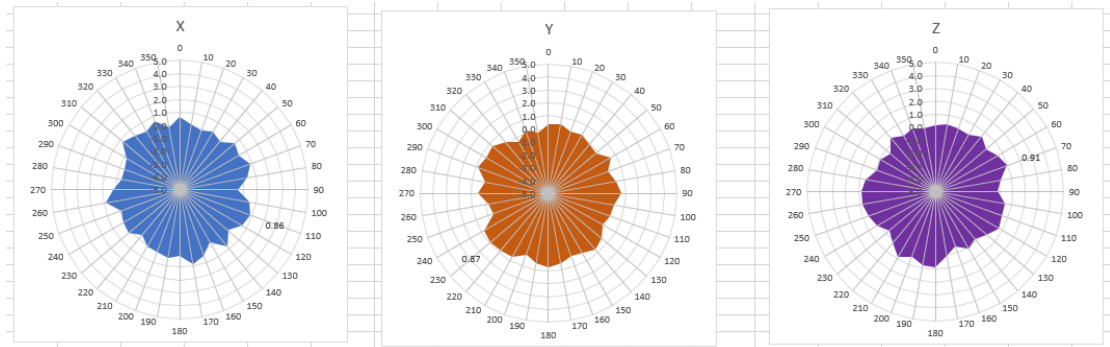
5240MHz



5745MHz



5785MHz



5825MHz

