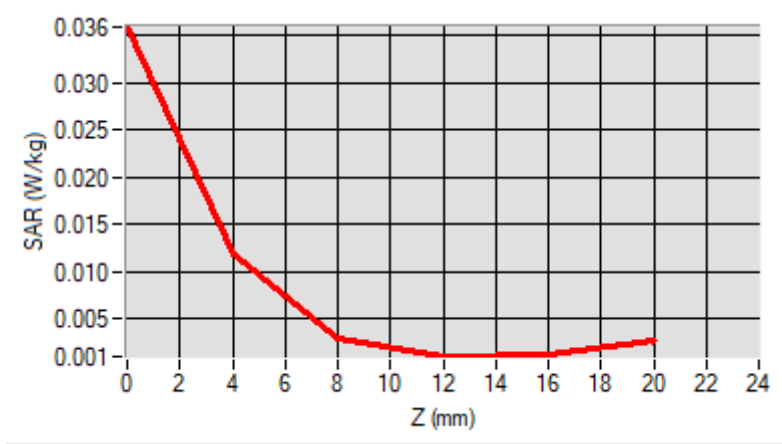


Maximum location: X=5.00, Y=-36.00
 D. SAR 1g & 10g

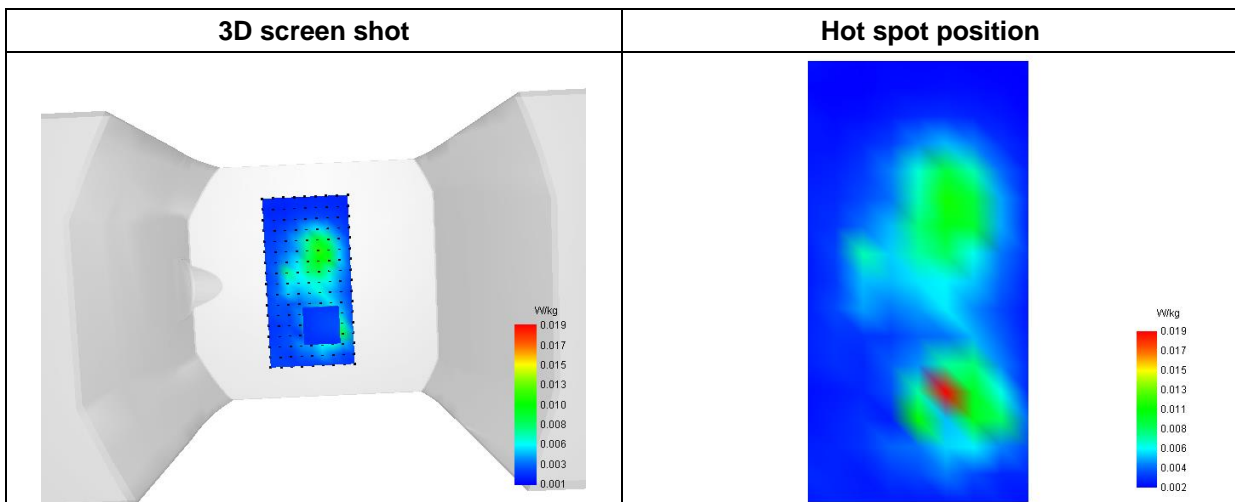
SAR 10g (W/Kg)	0.005966
SAR 1g (W/Kg)	0.013122

E. Z Axis Scan

Z (mm)	0.00	4.00	8.00	12.00	16.00
SAR (W/Kg)	0.0359	0.0118	0.0030	0.0010	0.0012



F. 3D Image



MEASUREMENT 52

Type: Phone measurement (Complete)

Date of measurement: 2024-03-25

Measurement duration: 11 minutes 48 seconds

E-field Probe: SSE2 - SN 18/21 EPGO356; ConvF: 1.71; Calibrated: 2023-07-07

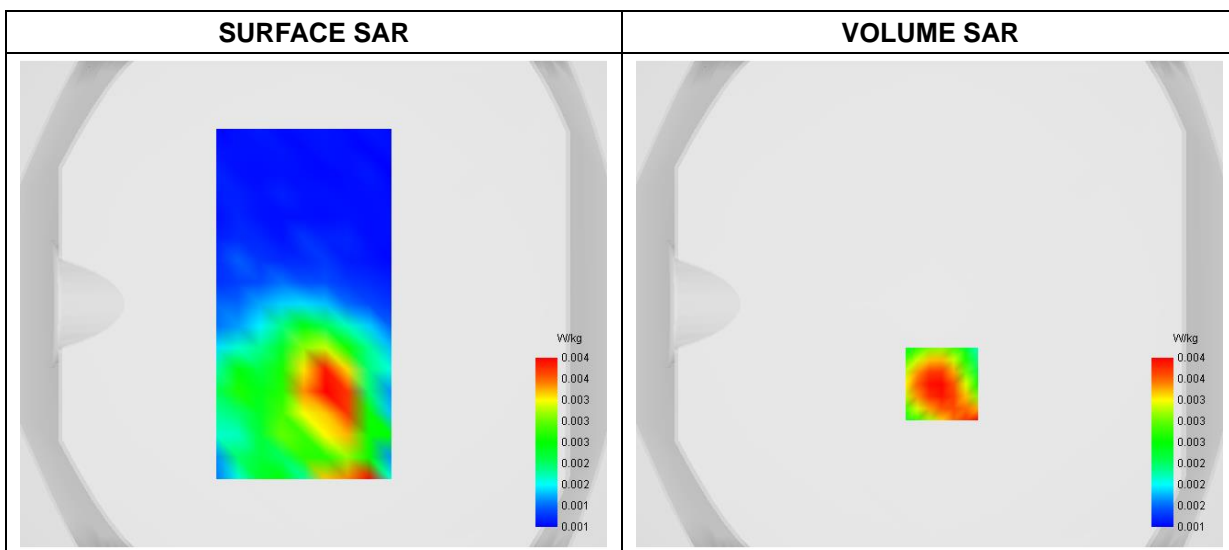
A. Experimental conditions

Area Scan	dx=9mm dy=9mm
Zoom Scan	dx=5mm dy=5mm dz=4mm
Phantom	Flat Plane
Device Position	Front
Band	5G NR_EN-DC n5A
Channels	DFT-s-OFDM PI/2 BPSK, 20MHz, 1RB, High
Signal	Duty Cycle 1:1

B. SAR Measurement Results

Frequency (MHz)	836.500000
Relative Permittivity (real part)	42.264746
Conductivity (S/m)	0.871218
Power Variation (%)	3.146900
Ambient Temperature	22.9
Liquid Temperature	22.9

C. SAR Surface and Volume



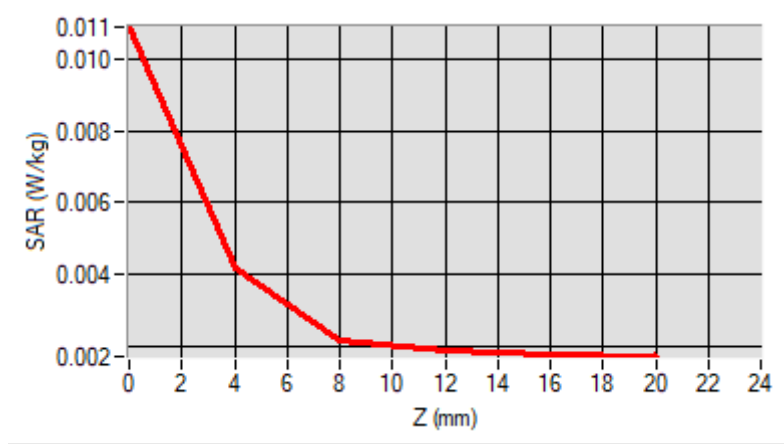
Maximum location: X=5.00, Y=-33.00

D. SAR 1g & 10g

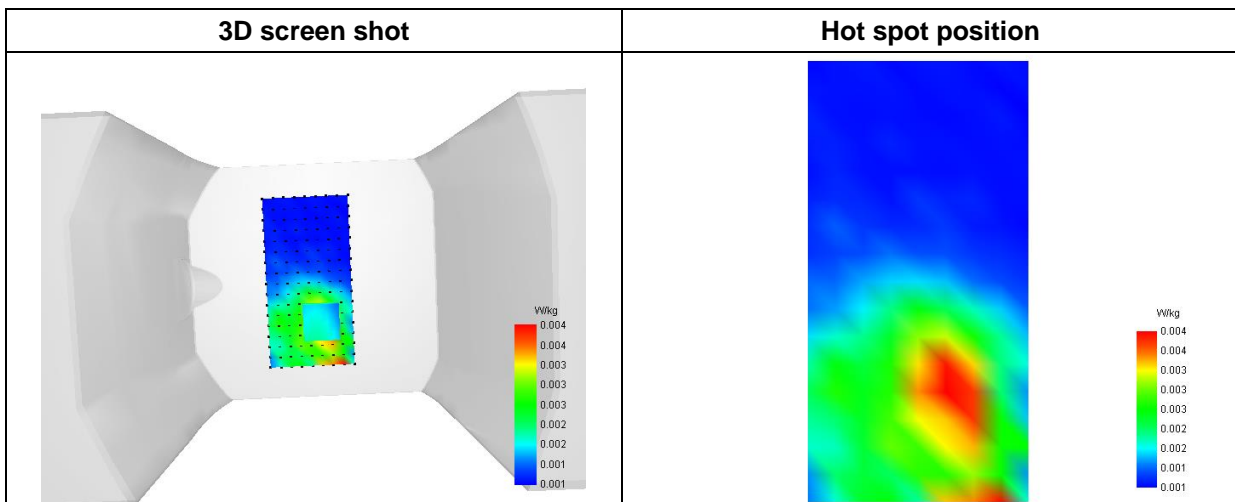
SAR 10g (W/Kg)	0.003019
SAR 1g (W/Kg)	0.004041

E. Z Axis Scan

Z (mm)	0.00	4.00	8.00	12.00	16.00
SAR (W/Kg)	0.0109	0.0042	0.0022	0.0019	0.0018



F. 3D Image



MEASUREMENT 53

Type: Measurement (Complete)

Date of measurement: 2024-03-17

Measurement duration: 12 minutes 3 seconds

E-field Probe: SSE2 - SN 18/21 EPGO356; ConvF: 2.22; Calibrated: 2023-07-07

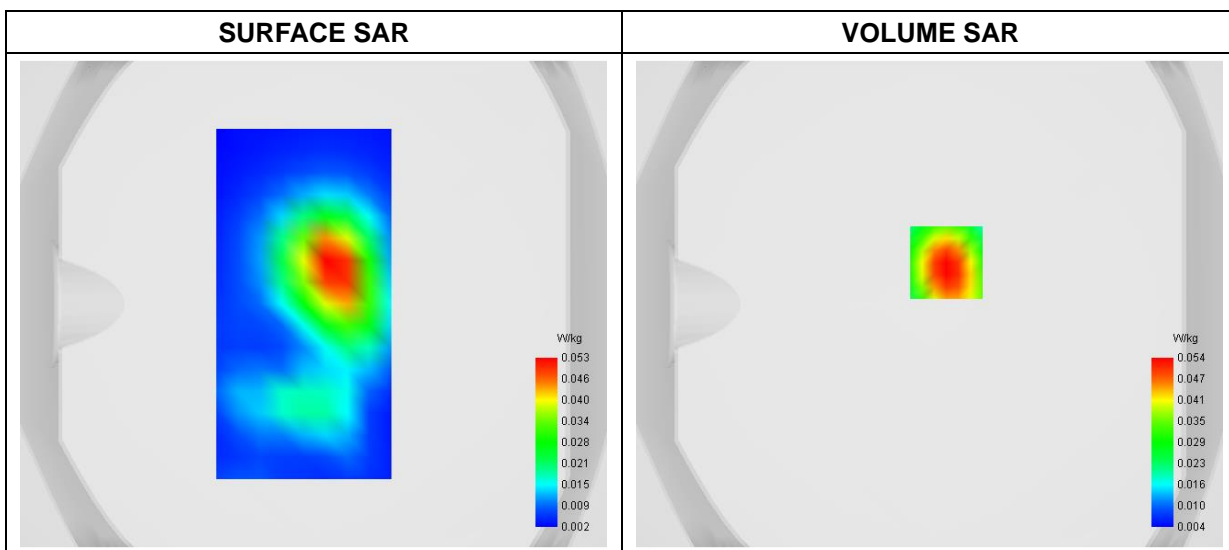
A. Experimental conditions

Area Scan	dx=9mm dy=9mm
Zoom Scan	dx=5mm dy=5mm dz=4mm
Phantom	Flat Plane
Device Position	Front
Band	5G NR_EN-DC n7A
Channels	DFT-s OFDM 16QAM, 40MHz, 1RB, Middle
Signal	Duty Cycle 1:1

B. SAR Measurement Results

Frequency (MHz)	2535.000000
Relative Permittivity (real part)	38.874591
Conductivity (S/m)	1.934782
Power Variation (%)	1.015900
Ambient Temperature	22.5
Liquid Temperature	22.5

C. SAR Surface and Volume



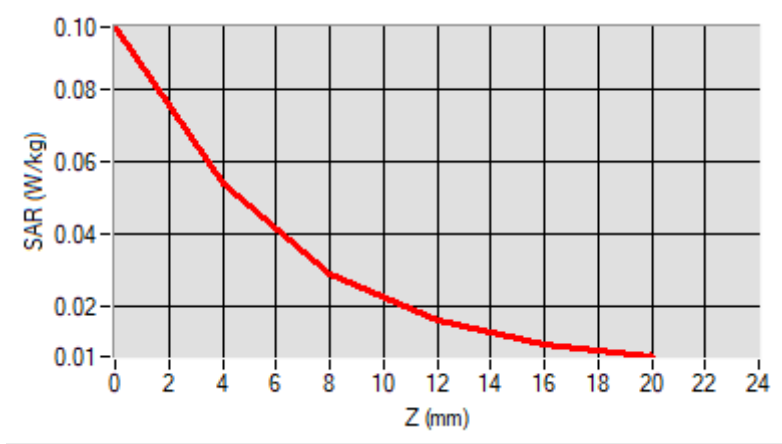
Maximum location: X=7.00, Y=17.00

D. SAR 1g & 10g

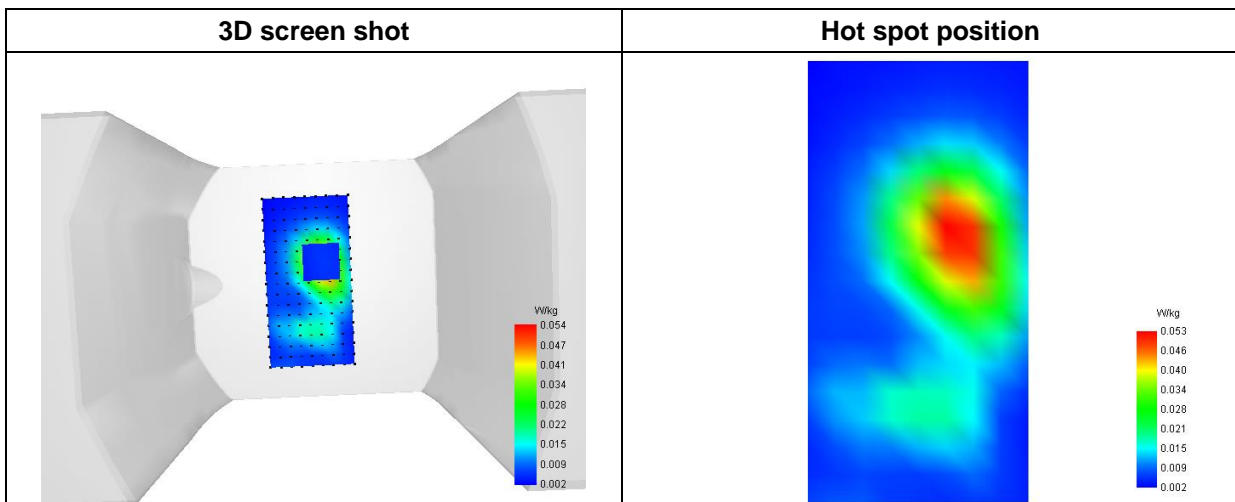
SAR 10g (W/Kg)	0.026025
SAR 1g (W/Kg)	0.050685

E. Z Axis Scan

Z (mm)	0.00	4.00	8.00	12.00	16.00
SAR (W/Kg)	0.0972	0.0536	0.0287	0.0157	0.0094



F. 3D Image



MEASUREMENT 54

Type: Phone measurement (Complete)

Date of measurement: 2024-03-27

Measurement duration: 12 minutes 3 seconds

E-field Probe: SSE2 - SN 18/21 EPGO356; ConvF: 1.67; Calibrated: 2023-07-07

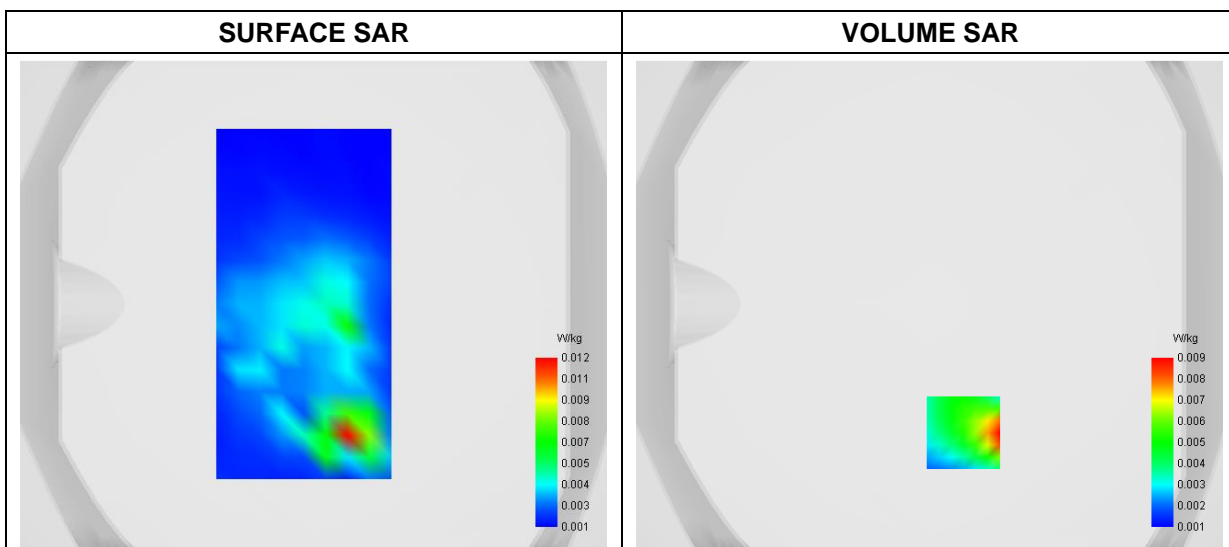
A. Experimental conditions

Area Scan	dx=9mm dy=9mm
Zoom Scan	dx=5mm dy=5mm dz=4mm
Phantom	Flat Plane
Device Position	Front
Band	5G NR_EN-DC n12A
Channels	DFT-s OFDM 16QAM, 15MHz, 1RB, Middle
Signal	Duty Cycle 1:1

B. SAR Measurement Results

Frequency (MHz)	706.500000
Relative Permittivity (real part)	42.281475
Conductivity (S/m)	0.861249
Power Variation (%)	-1.555900
Ambient Temperature	22.5
Liquid Temperature	22.5

C. SAR Surface and Volume

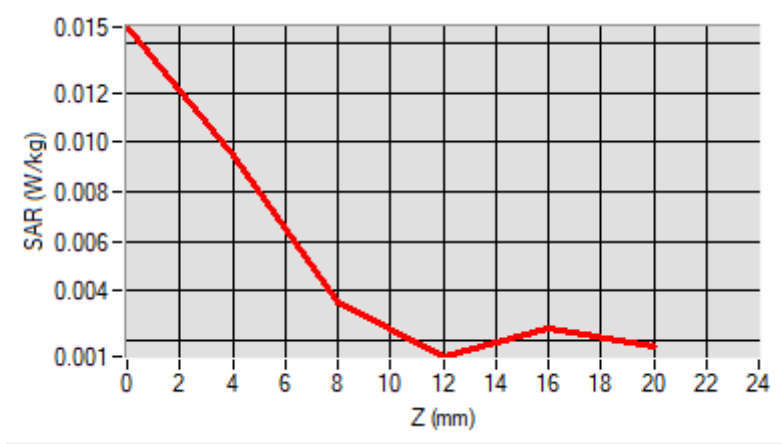


Maximum location: X=14.00, Y=-53.00
 D. SAR 1g & 10g

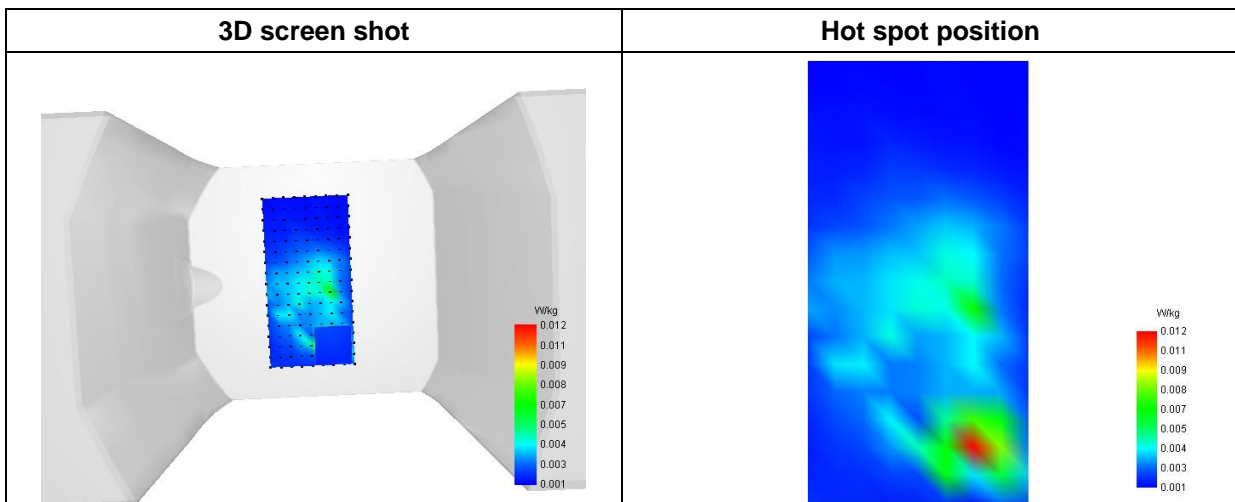
SAR 10g (W/Kg)	0.004271
SAR 1g (W/Kg)	0.008325

E. Z Axis Scan

Z (mm)	0.00	4.00	8.00	12.00	16.00
SAR (W/Kg)	0.0146	0.0094	0.0035	0.0013	0.0025



F. 3D Image



MEASUREMENT 55

Type: Phone measurement (Complete)

Date of measurement: 2024-03-27

Measurement duration: 12 minutes 3 seconds

E-field Probe: SSE2 - SN 18/21 EPGO356; ConvF: 1.67; Calibrated: 2023-07-07

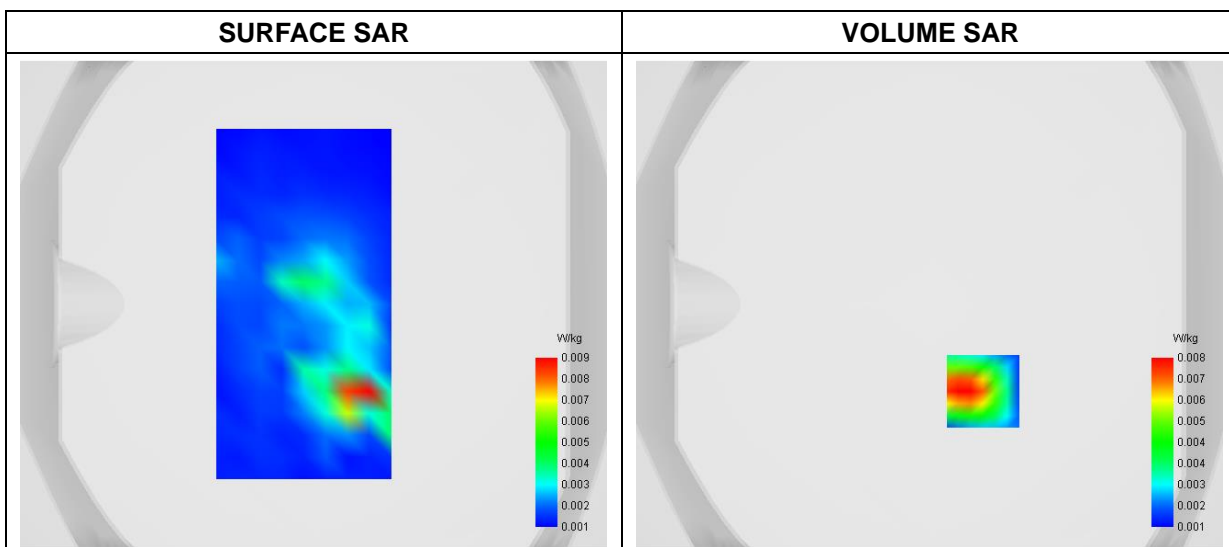
A. Experimental conditions

Area Scan	dx=9mm dy=9mm
Zoom Scan	dx=5mm dy=5mm dz=4mm
Phantom	Flat Plane
Device Position	Front
Band	5G NR_EN-DC n14A
Channels	DFT-s-OFDM 16QAM, 10MHz, 1RB, Middle
Signal	Duty Cycle 1:1

B. SAR Measurement Results

Frequency (MHz)	793.000000
Relative Permittivity (real part)	42.281895
Conductivity (S/m)	0.861557
Power Variation (%)	0.965900
Ambient Temperature	22.5
Liquid Temperature	22.5

C. SAR Surface and Volume

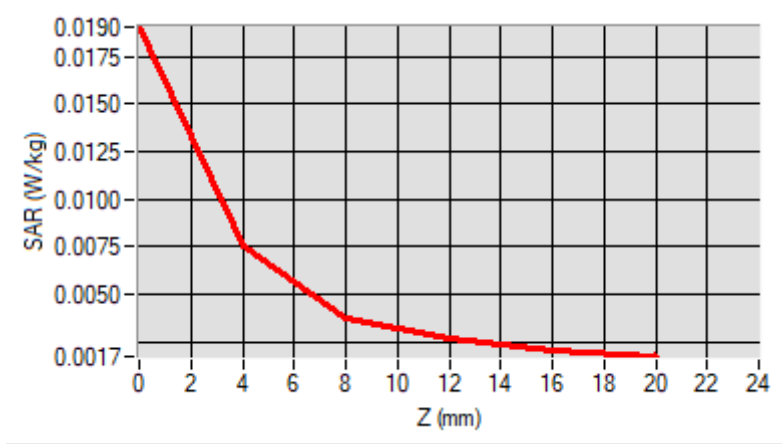


Maximum location: X=22.00, Y=-36.00
D. SAR 1g & 10g

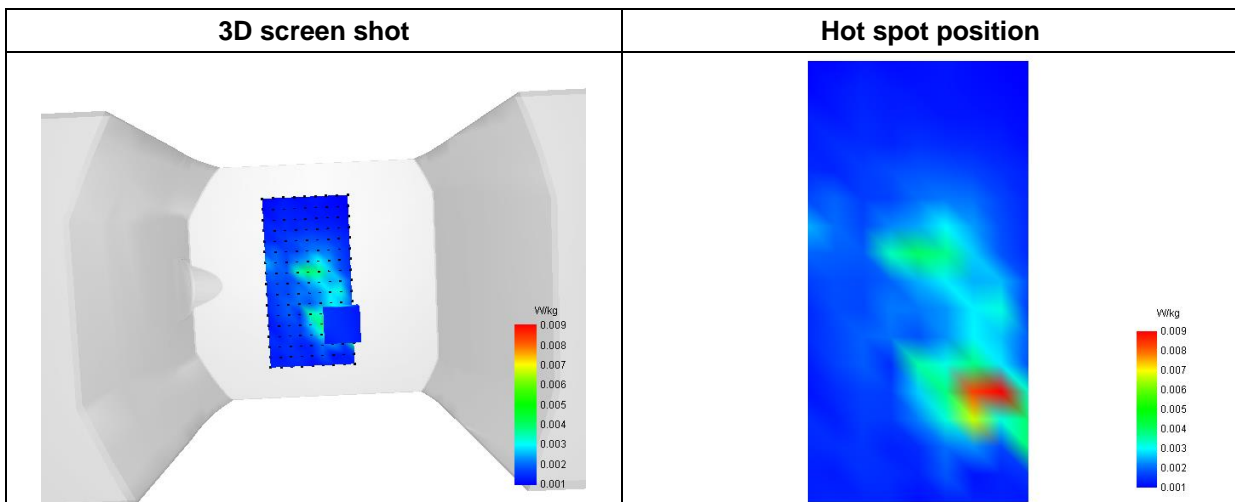
SAR 10g (W/Kg)	0.003932
SAR 1g (W/Kg)	0.007250

E. Z Axis Scan

Z (mm)	0.00	4.00	8.00	12.00	16.00
SAR (W/Kg)	0.0190	0.0076	0.0037	0.0027	0.0021



F. 3D Image



MEASUREMENT 56

Type: Phone measurement (Complete)

Date of measurement: 2024-03-12

Measurement duration: 12 minutes 3 seconds

E-field Probe: SSE2 - SN 18/21 EPGO356; ConvF: 2.21; Calibrated: 2023-07-07

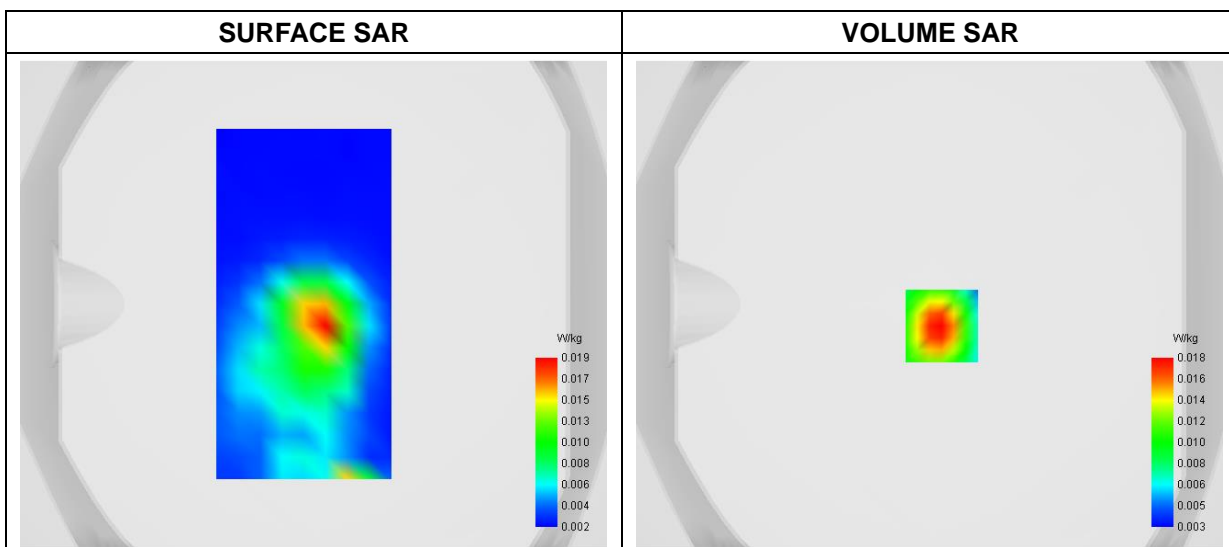
A. Experimental conditions

Area Scan	dx=9mm dy=9mm
Zoom Scan	dx=5mm dy=5mm dz=4mm
Phantom	Flat Plane
Device Position	Front
Band	5G NR_EN-DC n25
Channels	DFT-s-OFDM PI/2 BPSK, 40MHz, 1RB, Low
Signal	Duty Cycle 1:1

B. SAR Measurement Results

Frequency (MHz)	1870.000000
Relative Permittivity (real part)	39.524712
Conductivity (S/m)	1.371495
Power Variation (%)	0.419600
Ambient Temperature	22.8
Liquid Temperature	22.8

C. SAR Surface and Volume

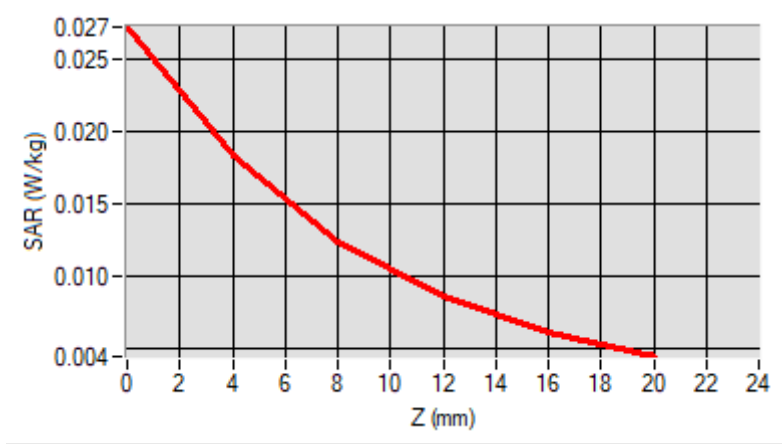


Maximum location: X=5.00, Y=-9.00
 D. SAR 1g & 10g

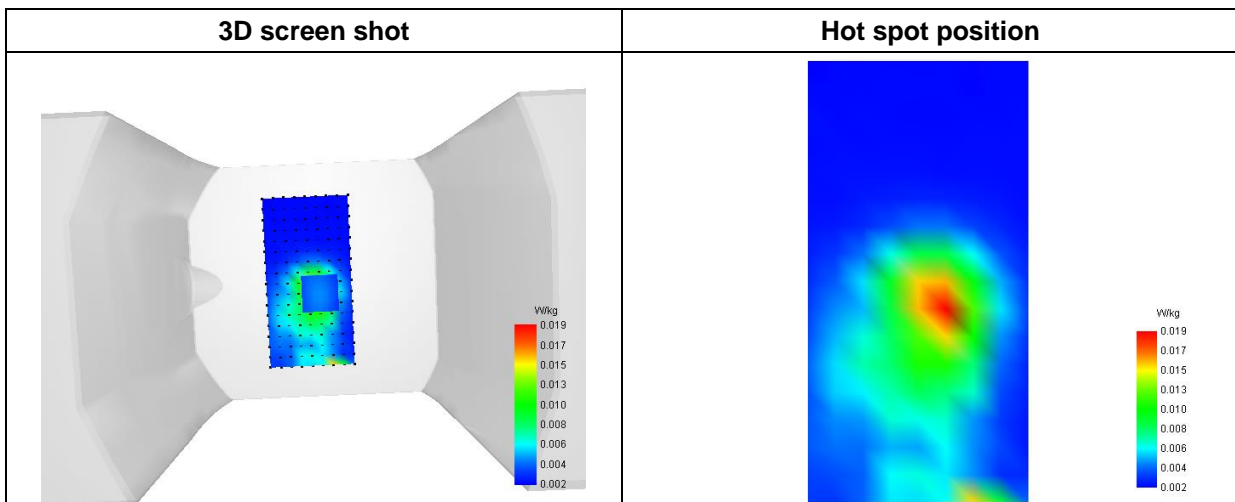
SAR 10g (W/Kg)	0.009885
SAR 1g (W/Kg)	0.016927

E. Z Axis Scan

Z (mm)	0.00	4.00	8.00	12.00	16.00
SAR (W/Kg)	0.0273	0.0183	0.0123	0.0085	0.0061



F. 3D Image



MEASUREMENT 57

Type: Phone measurement (Complete)

Date of measurement: 2024-03-14

Measurement duration: 12 minutes 3 seconds

E-field Probe: SSE2 - SN 18/21 EPGO356; ConvF: 2.34; Calibrated: 2023-07-07

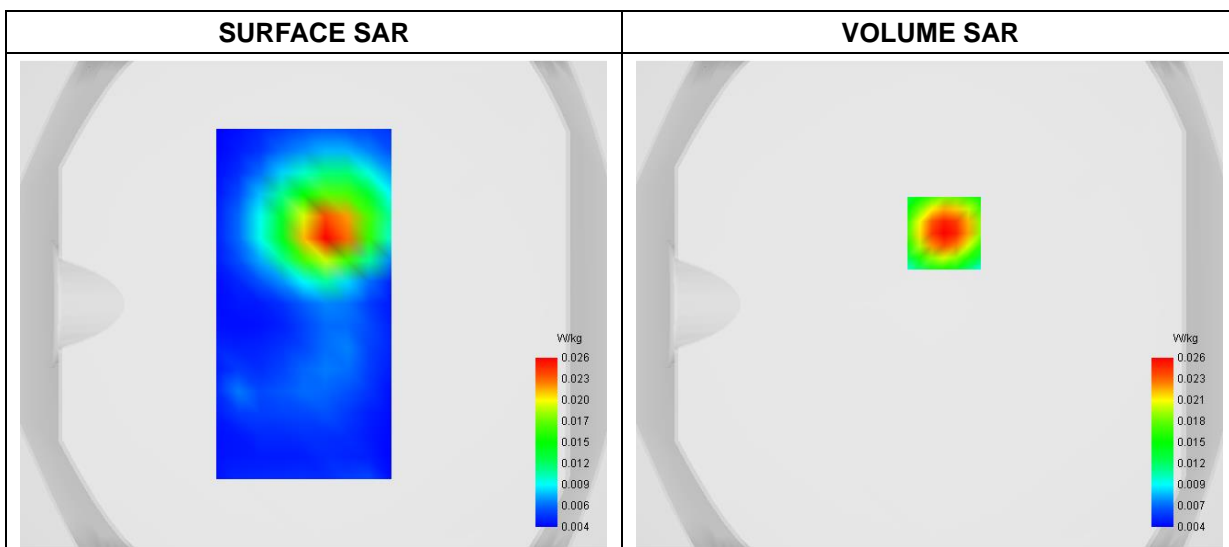
A. Experimental conditions

Area Scan	dx=9mm dy=9mm
Zoom Scan	dx=5mm dy=5mm dz=4mm
Phantom	Flat Plane
Device Position	Front
Band	5G NR_EN-DC n30A
Channels	DFT-s-OFDM PI/2 BPSK, 10MHz, 1RB, Middle
Signal	Duty Cycle 1:1

B. SAR Measurement Results

Frequency (MHz)	2310.000000
Relative Permittivity (real part)	39.121489
Conductivity (S/m)	1.652675
Power Variation (%)	-1.541900
Ambient Temperature	22.6
Liquid Temperature	22.6

C. SAR Surface and Volume



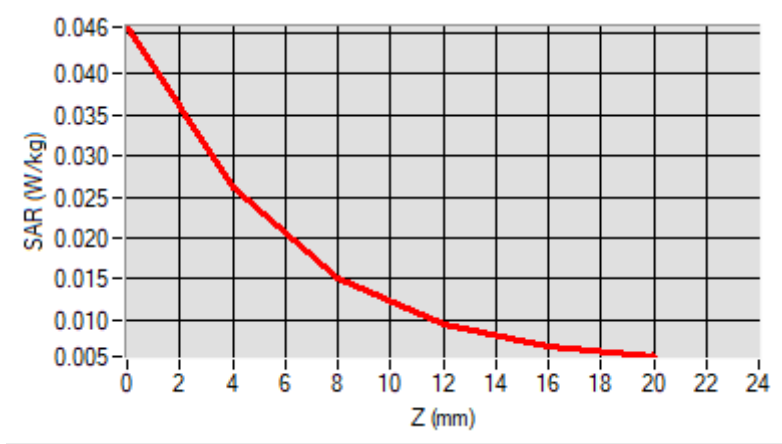
Maximum location: X=6.00, Y=29.00

D. SAR 1g & 10g

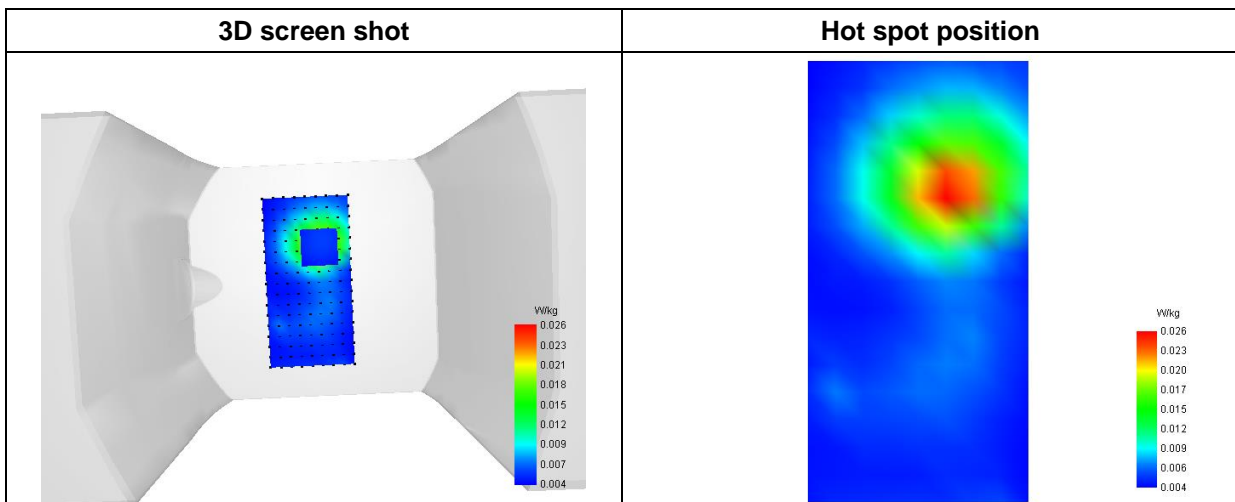
SAR 10g (W/Kg)	0.013935
SAR 1g (W/Kg)	0.024732

E. Z Axis Scan

Z (mm)	0.00	4.00	8.00	12.00	16.00
SAR (W/Kg)	0.0458	0.0262	0.0151	0.0094	0.0068



F. 3D Image



MEASUREMENT 58

Type: Measurement (Complete)

Date of measurement: 2024-03-21

Measurement duration: 12 minutes 3 seconds

E-field Probe: SSE2 - SN 18/21 EPGO356; ConvF: 2.22; Calibrated: 2023-07-07

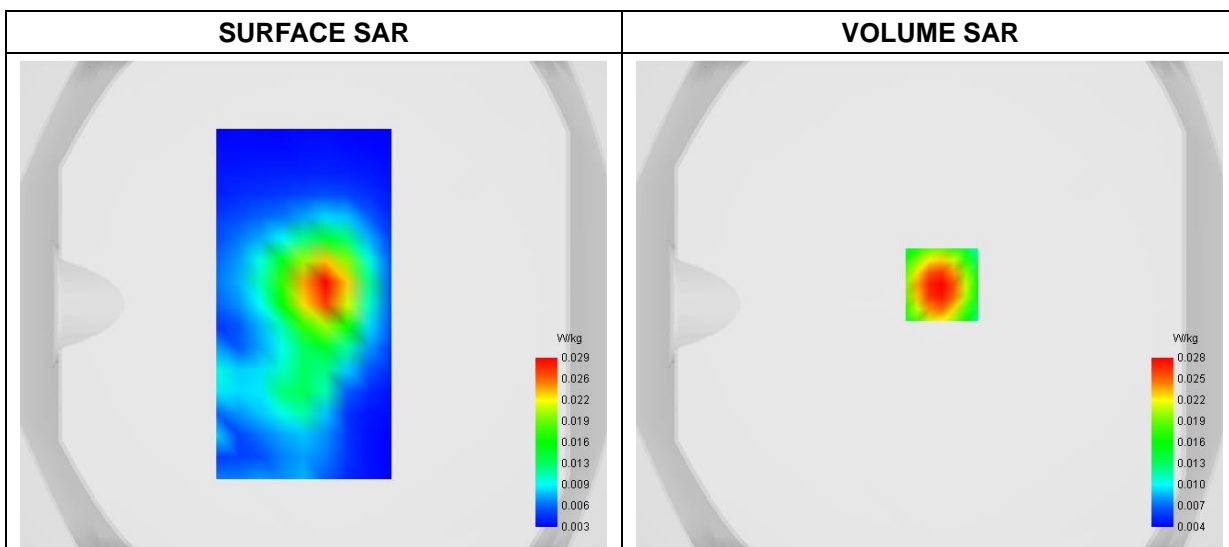
A. Experimental conditions

Area Scan	dx=9mm dy=9mm
Zoom Scan	dx=5mm dy=5mm dz=4mm
Phantom	Flat Plane
Device Position	Front
Band	5G NR_EN-DC n38
Channels	DFT-s-OFDM QPSK, 40MHz, 1RB, Middle
Signal	Duty Cycle 1:1

B. SAR Measurement Results

Frequency (MHz)	2600.000000
Relative Permittivity (real part)	35.121462
Conductivity (S/m)	3.333517
Power Variation (%)	1.558900
Ambient Temperature	22.9
Liquid Temperature	22.9

C. SAR Surface and Volume

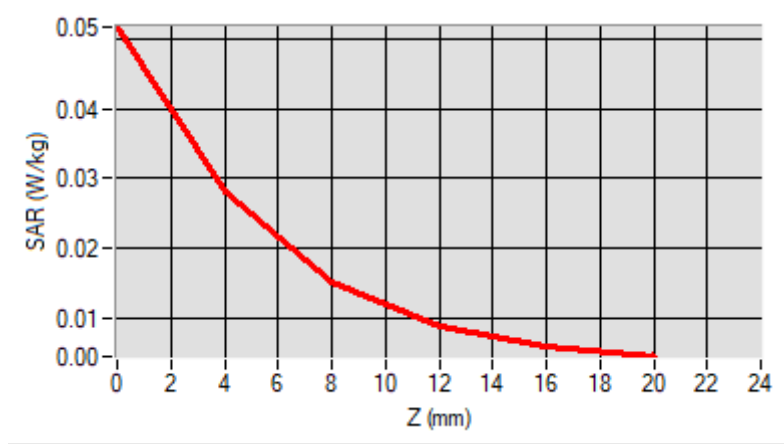


Maximum location: X=5.00, Y=8.00
D. SAR 1g & 10g

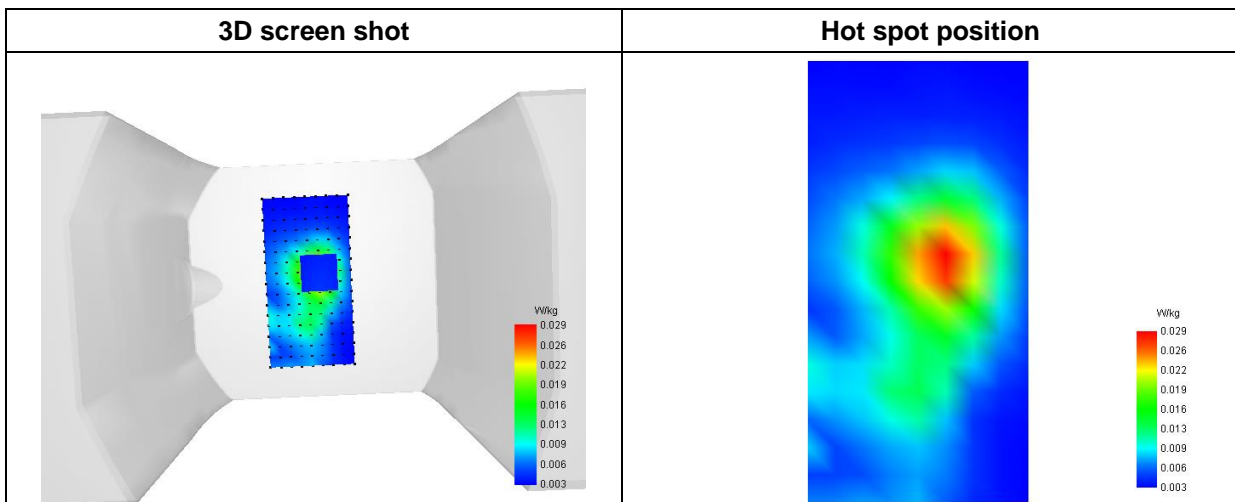
SAR 10g (W/Kg)	0.014276
SAR 1g (W/Kg)	0.026749

E. Z Axis Scan

Z (mm)	0.00	4.00	8.00	12.00	16.00
SAR (W/Kg)	0.0518	0.0282	0.0151	0.0087	0.0058



F. 3D Image



MEASUREMENT 59

Type: Measurement (Complete)

Date of measurement: 2024-03-17

Measurement duration: 12 minutes 3 seconds

E-field Probe: SSE2 - SN 18/21 EPGO356; ConvF: 2.22; Calibrated: 2023-07-07

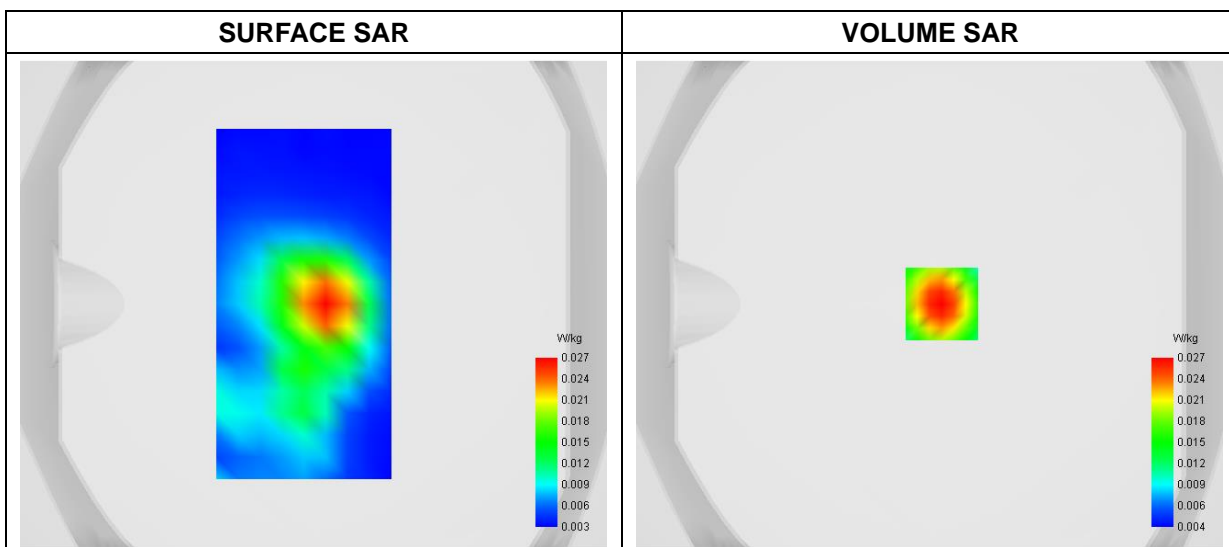
A. Experimental conditions

Area Scan	dx=9mm dy=9mm
Zoom Scan	dx=5mm dy=5mm dz=4mm
Phantom	Flat Plane
Device Position	Front
Band	5G NR_EN-DC n41
Channels	DFT-s OFDM 16QAM, 100MHz, 1RB, High
Signal	Duty Cycle 1:1

B. SAR Measurement Results

Frequency (MHz)	2640.000000
Relative Permittivity (real part)	38.873863
Conductivity (S/m)	1.933625
Power Variation (%)	1.317400
Ambient Temperature	22.5
Liquid Temperature	22.5

C. SAR Surface and Volume

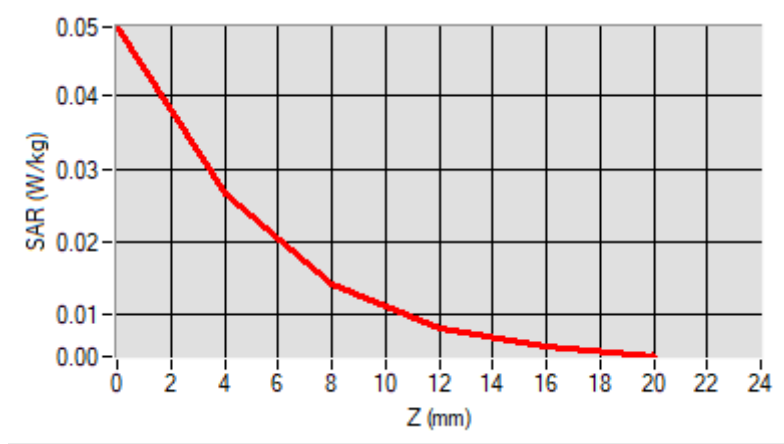


Maximum location: X=5.00, Y=0.00
 D. SAR 1g & 10g

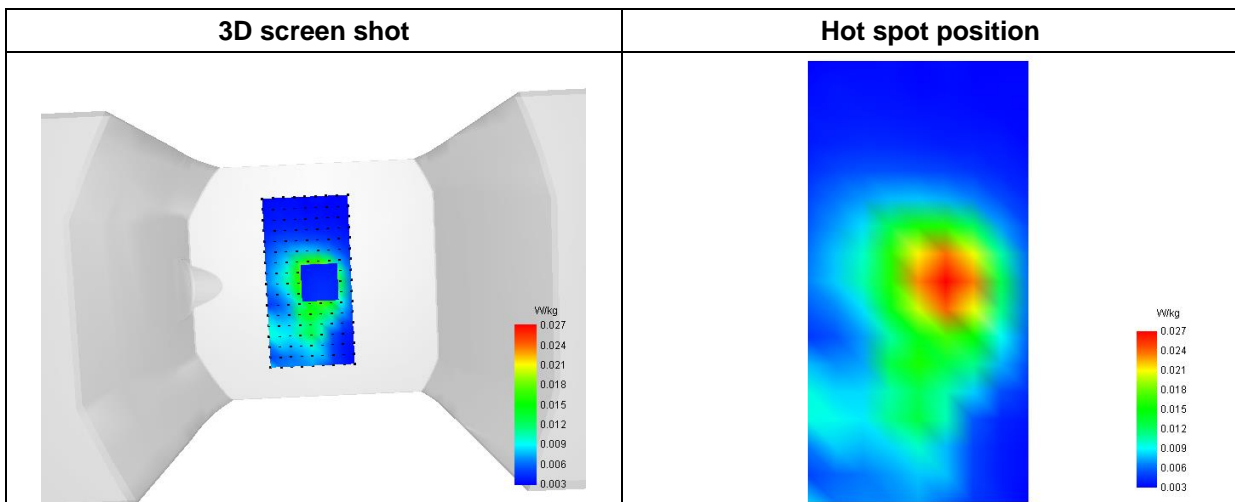
SAR 10g (W/Kg)	0.013593
SAR 1g (W/Kg)	0.025288

E. Z Axis Scan

Z (mm)	0.00	4.00	8.00	12.00	16.00
SAR (W/Kg)	0.0494	0.0266	0.0141	0.0081	0.0056



F. 3D Image



MEASUREMENT 60

Type: Measurement (Complete)

Date of measurement: 2024-03-17

Measurement duration: 12 minutes 3 seconds

E-field Probe: SSE2 - SN 18/21 EPGO356; ConvF: 2.22; Calibrated: 2023-07-07

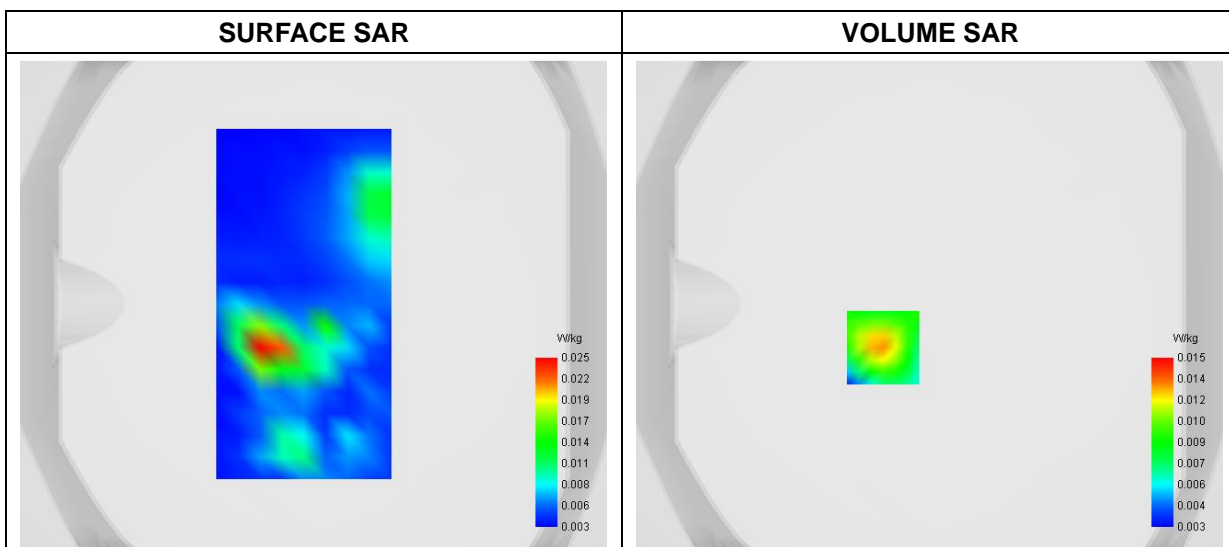
A. Experimental conditions

Area Scan	dx=9mm dy=9mm
Zoom Scan	dx=5mm dy=5mm dz=4mm
Phantom	Flat Plane
Device Position	Front
Band	5G NR_EN-DC n48
Channels	DFT-s OFDM 16QAM, 40MHz, 1RB, High
Signal	Duty Cycle 1:1

B. SAR Measurement Results

Frequency (MHz)	3679.980000
Relative Permittivity (real part)	38.873863
Conductivity (S/m)	1.933625
Power Variation (%)	1.317400
Ambient Temperature	22.5
Liquid Temperature	22.5

C. SAR Surface and Volume



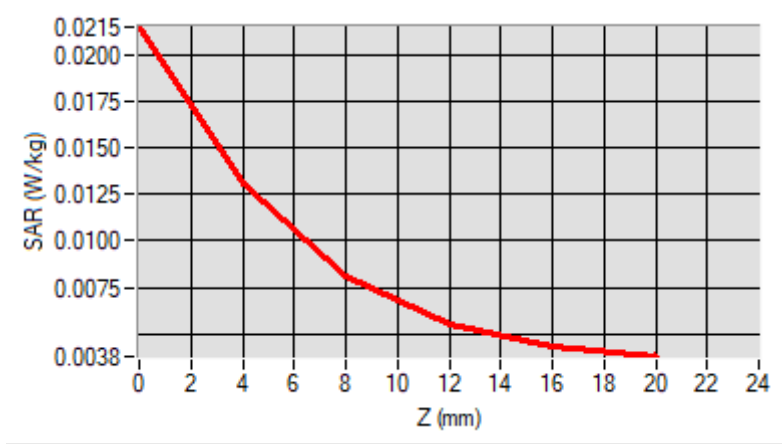
Maximum location: X=-19.00, Y=-18.00

D. SAR 1g & 10g

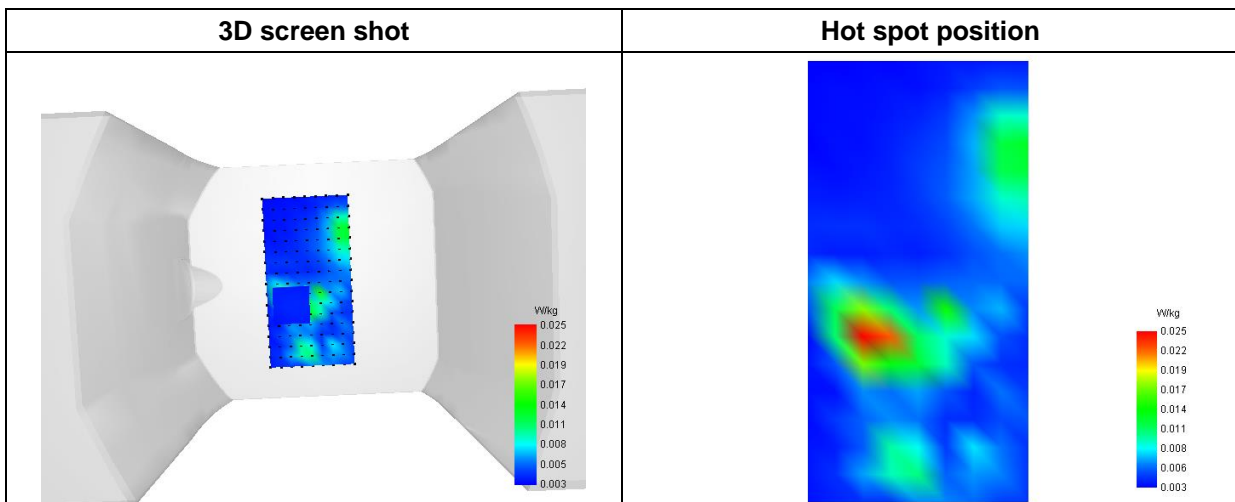
SAR 10g (W/Kg)	0.008422
SAR 1g (W/Kg)	0.013511

E. Z Axis Scan

Z (mm)	0.00	4.00	8.00	12.00	16.00
SAR (W/Kg)	0.0215	0.0131	0.0081	0.0055	0.0044



F. 3D Image



MEASUREMENT 61

Type: Phone measurement (Complete)

Date of measurement: 2024-03-08

Measurement duration: 12 minutes 3 seconds

E-field Probe: SSE2 - SN 18/21 EPGO356; ConvF: 2.11; Calibrated: 2023-07-07

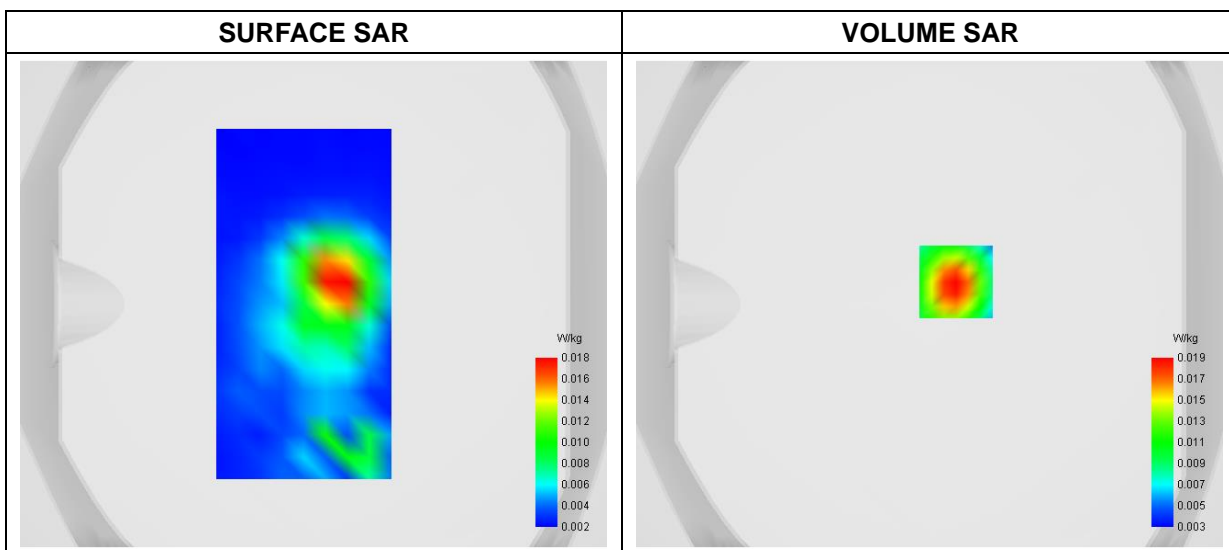
A. Experimental conditions

Area Scan	dx=9mm dy=9mm
Zoom Scan	dx=5mm dy=5mm dz=4mm
Phantom	Flat Plane
Device Position	Front
Band	5G NR_EN-DC n66
Channels	DFT-s-OFDM PI/2 BPSK, 40MHz, 1RB, High
Signal	Duty Cycle 1:1

B. SAR Measurement Results

Frequency (MHz)	1760.000000
Relative Permittivity (real part)	39.541489
Conductivity (S/m)	1.372508
Power Variation (%)	-0.414700
Ambient Temperature	22.8
Liquid Temperature	22.8

C. SAR Surface and Volume



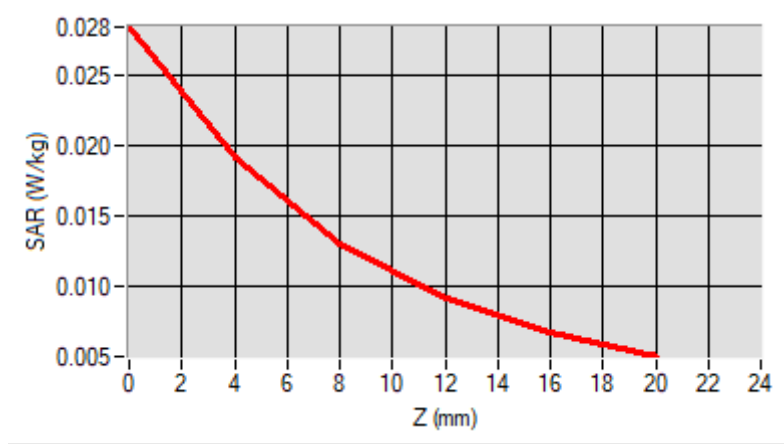
Maximum location: X=11.00, Y=9.00

D. SAR 1g & 10g

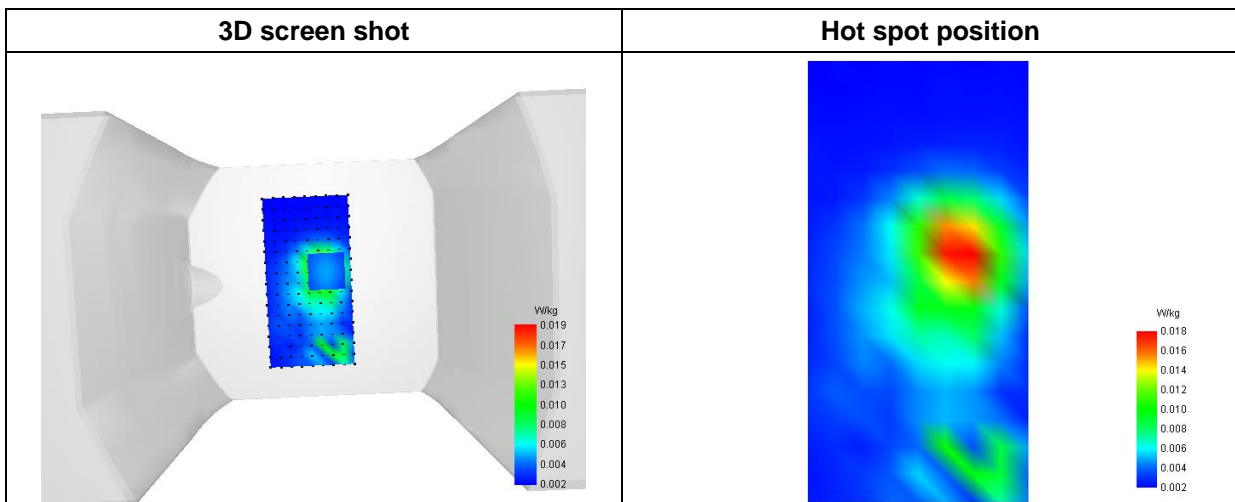
SAR 10g (W/Kg)	0.010395
SAR 1g (W/Kg)	0.017676

E. Z Axis Scan

Z (mm)	0.00	4.00	8.00	12.00	16.00
SAR (W/Kg)	0.0284	0.0191	0.0129	0.0090	0.0066



F. 3D Image



MEASUREMENT 62

Type: Phone measurement (Complete)

Date of measurement: 2024-03-27

Measurement duration: 12 minutes 3 seconds

E-field Probe: SSE2 - SN 18/21 EPGO356; ConvF: 1.67; Calibrated: 2023-07-07

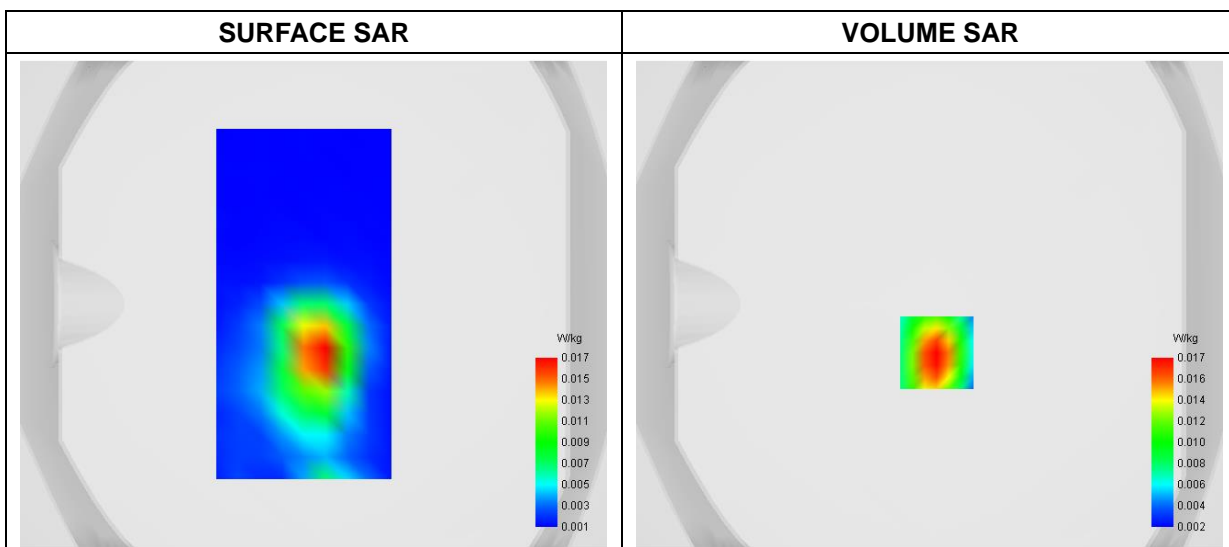
A. Experimental conditions

Area Scan	dx=9mm dy=9mm
Zoom Scan	dx=5mm dy=5mm dz=4mm
Phantom	Flat Plane
Device Position	Front
Band	5G NR_EN-DC n71
Channels	DFT-s OFDM 16QAM, 20MHz, 1RB, Middle
Signal	Duty Cycle 1:1

B. SAR Measurement Results

Frequency (MHz)	680.500000
Relative Permittivity (real part)	42.282631
Conductivity (S/m)	0.863625
Power Variation (%)	1.816500
Ambient Temperature	22.5
Liquid Temperature	22.5

C. SAR Surface and Volume

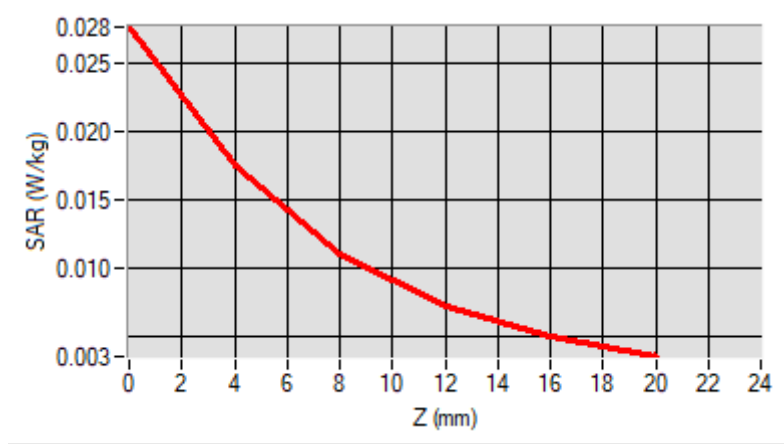


Maximum location: X=3.00, Y=-20.00
 D. SAR 1g & 10g

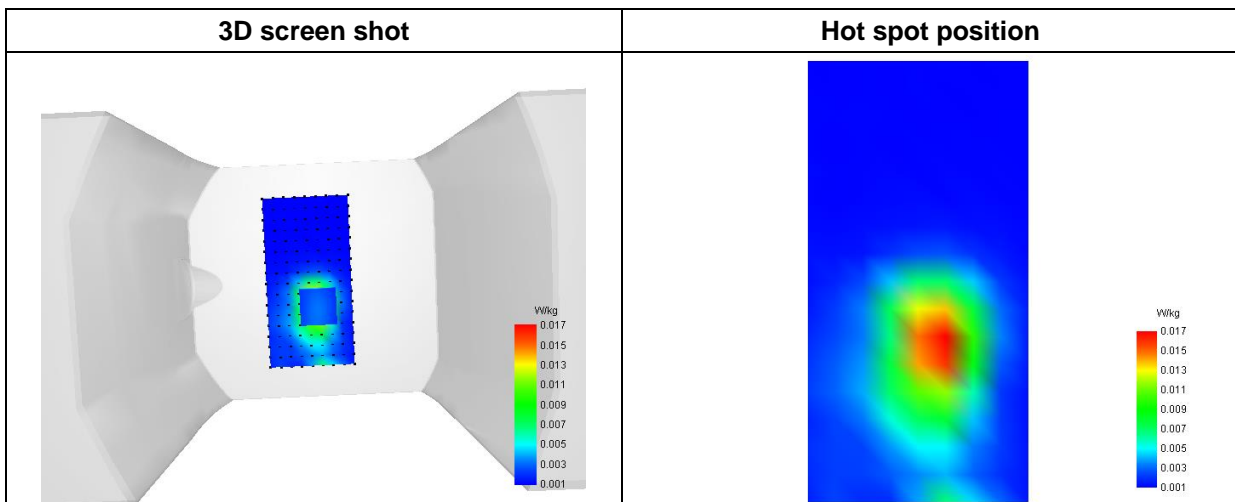
SAR 10g (W/Kg)	0.008883
SAR 1g (W/Kg)	0.016063

E. Z Axis Scan

Z (mm)	0.00	4.00	8.00	12.00	16.00
SAR (W/Kg)	0.0276	0.0175	0.0110	0.0072	0.0050



F. 3D Image



MEASUREMENT 63

Type: Phone measurement (Complete)

Date of measurement: 2024-03-20

Measurement duration: 12 minutes 3 seconds

E-field Probe: SSE2 - SN 18/21 EPGO356; ConvF: 2.07; Calibrated: 2023-07-07

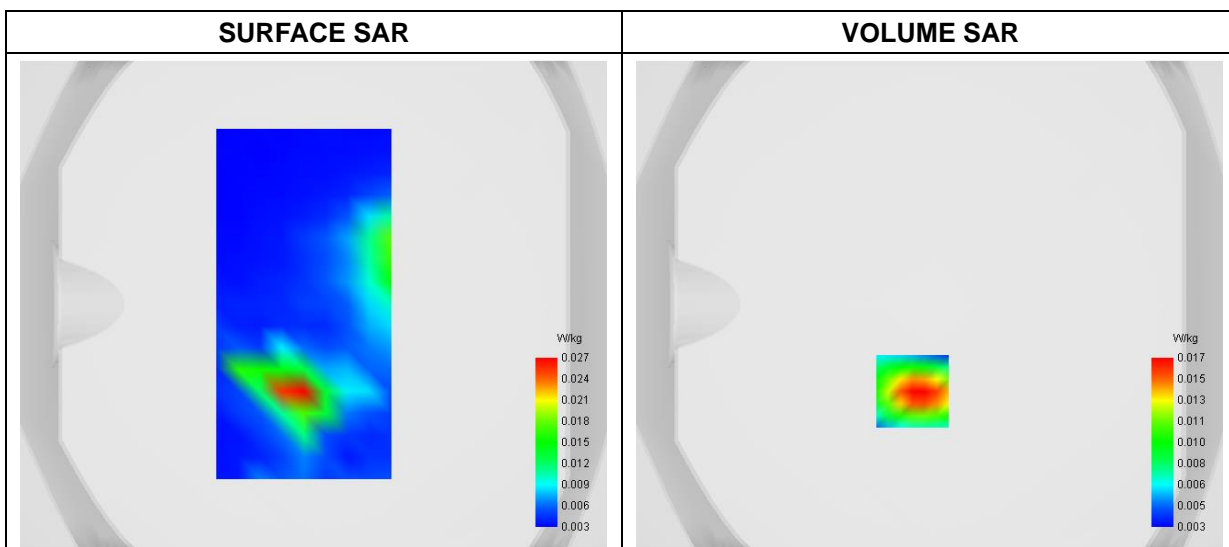
A. Experimental conditions

Area Scan	dx=9mm dy=9mm
Zoom Scan	dx=5mm dy=5mm dz=4mm
Phantom	Flat Plane
Device Position	Front
Band	5G NR_EN-DC n77/78_3450-3550MHz
Channels	DFT-s-OFDM QPSK, 30MHz, 1RB, Middle
Signal	Duty Cycle 1:1

B. SAR Measurement Results

Frequency (MHz)	3500.010000
Relative Permittivity (real part)	36.424129
Conductivity (S/m)	3.043701
Power Variation (%)	1.895800
Ambient Temperature	22.9
Liquid Temperature	22.9

C. SAR Surface and Volume

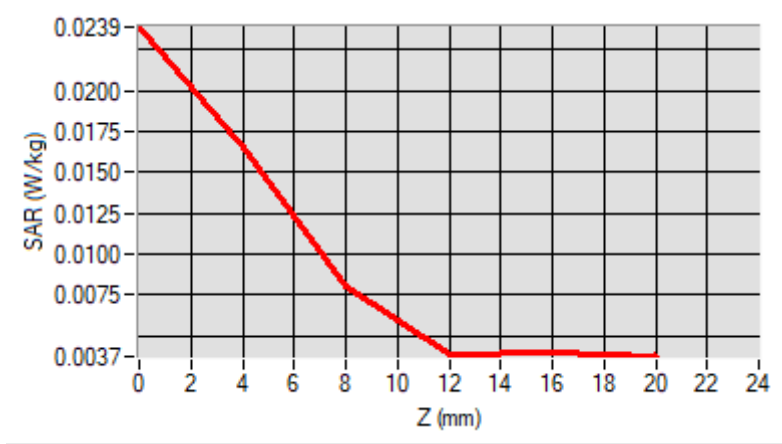


Maximum location: X=-7.00, Y=-36.00
 D. SAR 1g & 10g

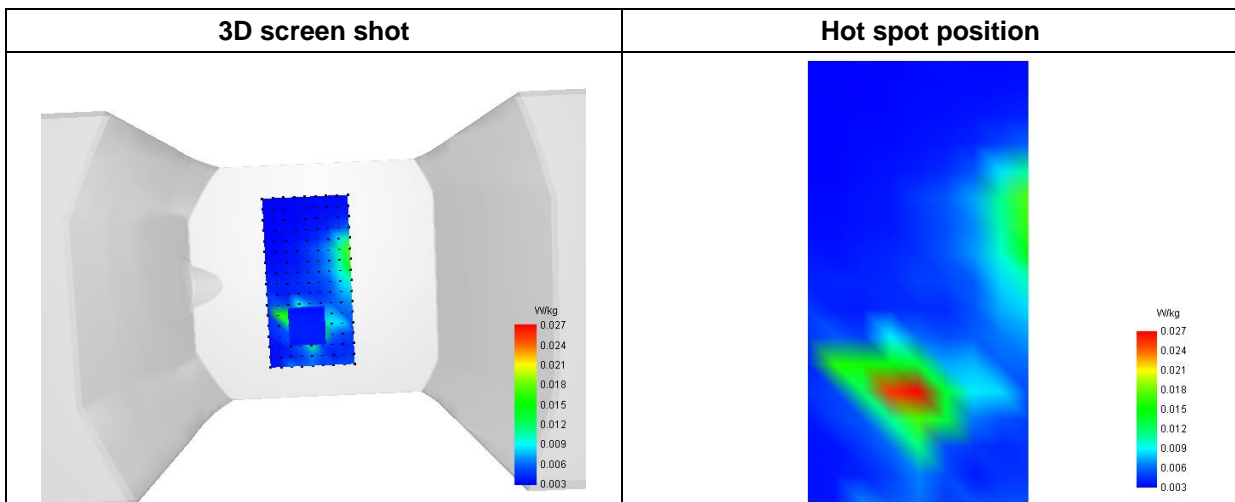
SAR 10g (W/Kg)	0.008646
SAR 1g (W/Kg)	0.016353

E. Z Axis Scan

Z (mm)	0.00	4.00	8.00	12.00	16.00
SAR (W/Kg)	0.0239	0.0165	0.0081	0.0038	0.0040



F. 3D Image



MEASUREMENT 64

Type: Phone measurement (Complete)

Date of measurement: 2024-03-22

Measurement duration: 12 minutes 3 seconds

E-field Probe: SSE2 - SN 18/21 EPGO356; ConvF: 2.37; Calibrated: 2023-07-07

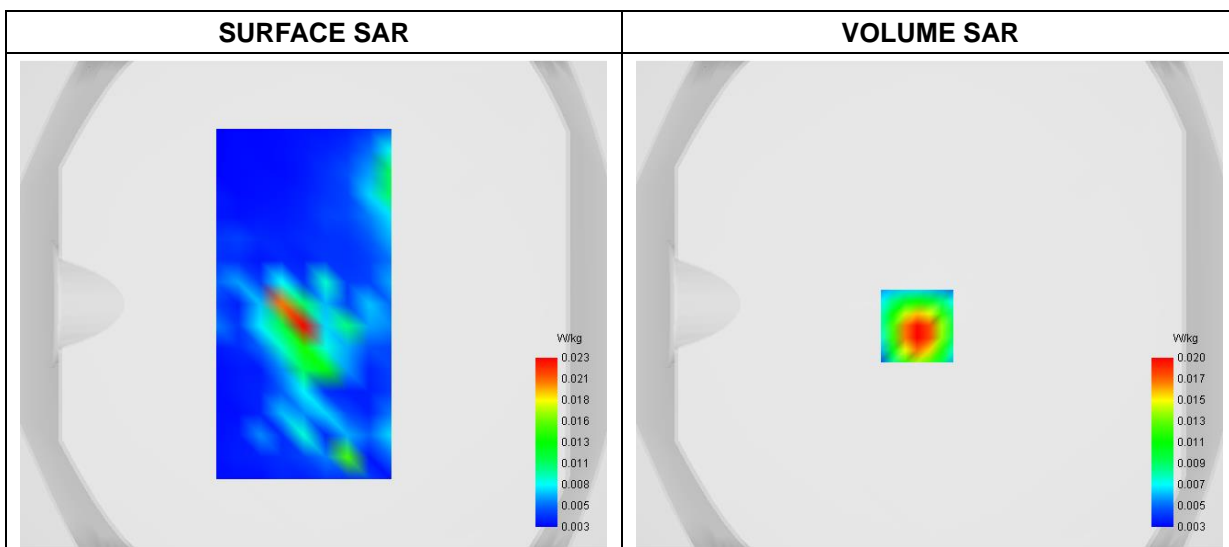
A. Experimental conditions

Area Scan	dx=9mm dy=9mm
Zoom Scan	dx=5mm dy=5mm dz=4mm
Phantom	Flat Plane
Device Position	Front
Band	5G NR_EN-DC n77/78_3700-3980MHz
Channels	DFT-s OFDM 16QAM, 100MHz, 1RB, High
Signal	Duty Cycle 1:1

B. SAR Measurement Results

Frequency (MHz)	3930.000000
Relative Permittivity (real part)	34.274129
Conductivity (S/m)	3.653701
Power Variation (%)	1.416400
Ambient Temperature	22.9
Liquid Temperature	22.9

C. SAR Surface and Volume

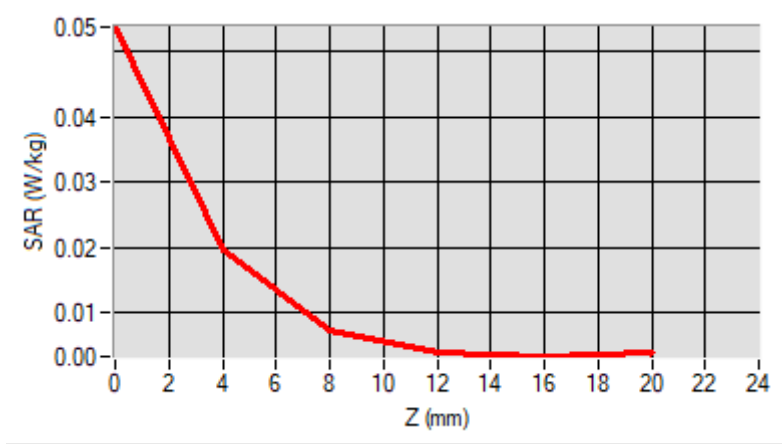


**Maximum location: X=-5.00, Y=-9.00
D. SAR 1g & 10g**

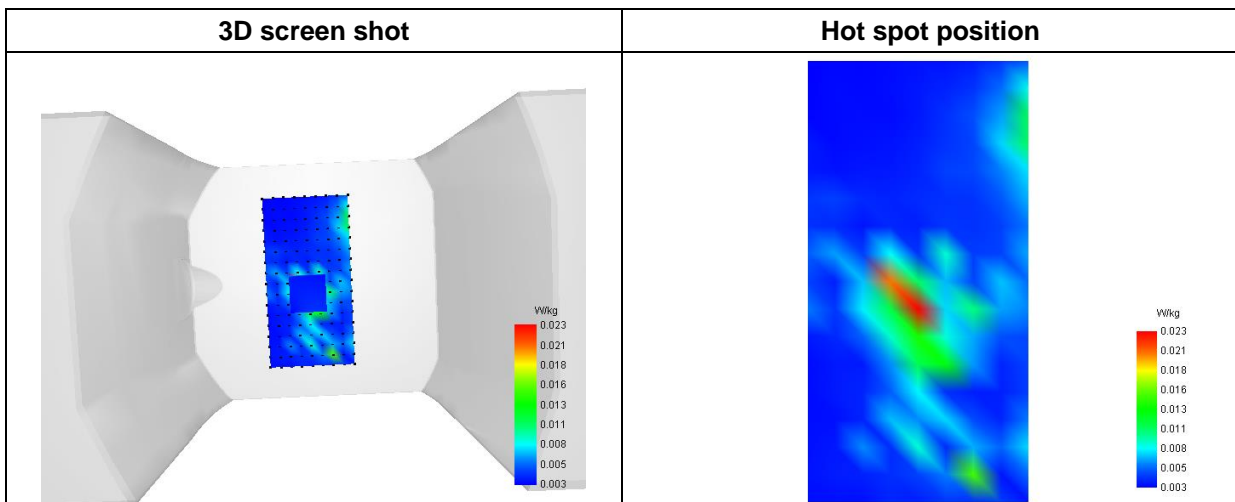
SAR 10g (W/Kg)	0.010323
SAR 1g (W/Kg)	0.020457

E. Z Axis Scan

Z (mm)	0.00	4.00	8.00	12.00	16.00
SAR (W/Kg)	0.0537	0.0195	0.0071	0.0039	0.0032



F. 3D Image



MEASUREMENT 65

Type: Phone measurement (Complete)

Date of measurement: 2024-04-16

Measurement duration: 12 minutes 3 seconds

E-field Probe: SSE2 - SN 18/21 EPGO356; ConvF: 1.91; Calibrated: 2023-07-07

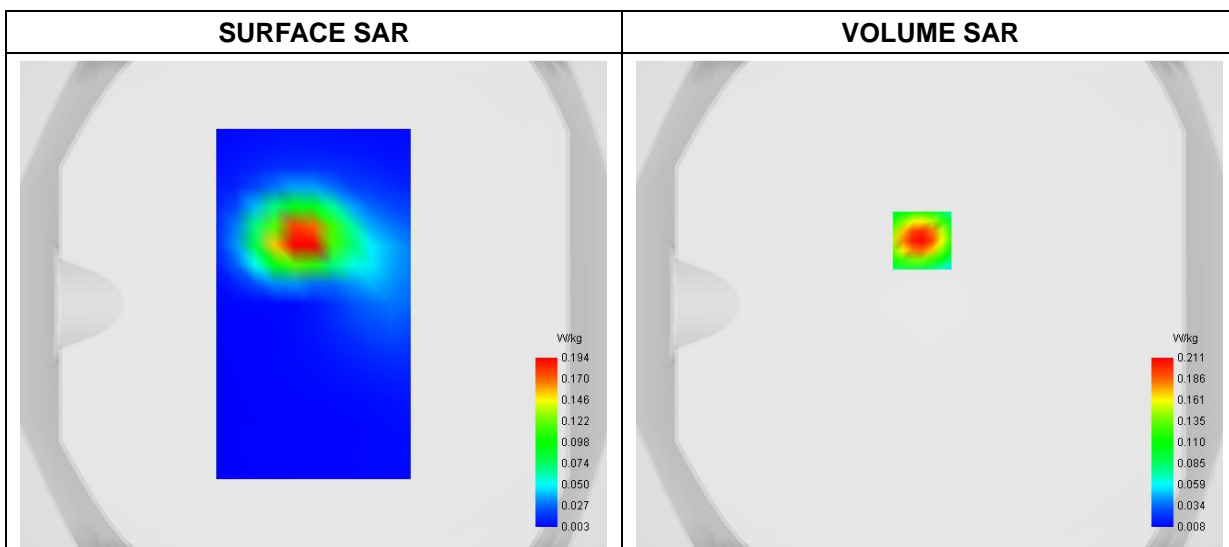
A. Experimental conditions

Area Scan	dx=8mm dy=8mm
Zoom Scan	dx=5mm dy=5mm dz=4mm
Phantom	Flat Plane
Device Position	Back
Band	WiFi(5.2GHz)_802.11a-ANT0
Channels	Middle
Signal	Duty Cycle: 1:1

B. SAR Measurement Results

Frequency (MHz)	5200.000000
Relative Permittivity (real part)	36.753291
Conductivity (S/m)	4.691832
Power Variation (%)	0.347800
Ambient Temperature	22.6
Liquid Temperature	22.6

C. SAR Surface and Volume

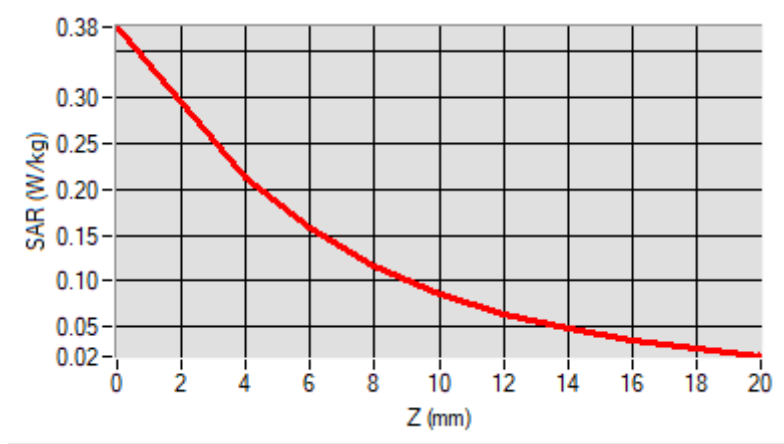


Maximum location: X=-3.00, Y=26.00
 D. SAR 1g & 10g

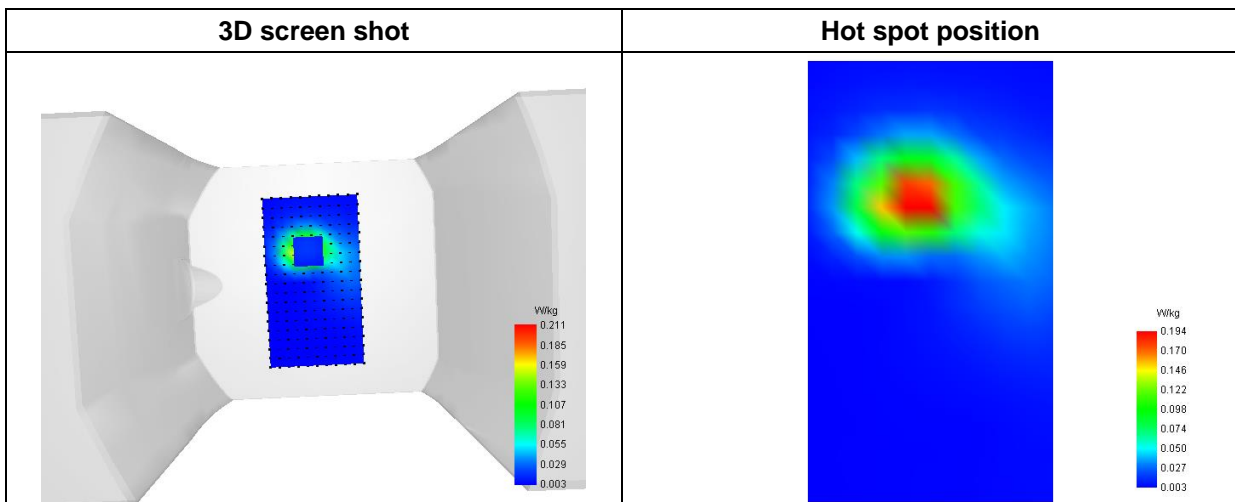
SAR 10g (W/Kg)	0.087858
SAR 1g (W/Kg)	0.192469

E. Z Axis Scan

Z (mm)	0.00	4.00	6.00	8.00	10.00	12.00	14.00	16.00	18.00
SAR (W/Kg)	0.3764	0.2115	0.1572	0.1163	0.0863	0.0643	0.0479	0.0354	0.0257



F. 3D Image



MEASUREMENT 66

Type: Phone measurement (Complete)

Date of measurement: 2024-04-16

Measurement duration: 12 minutes 3 seconds

E-field Probe: SSE2 - SN 18/21 EPGO356; ConvF: 1.91; Calibrated: 2023-07-07

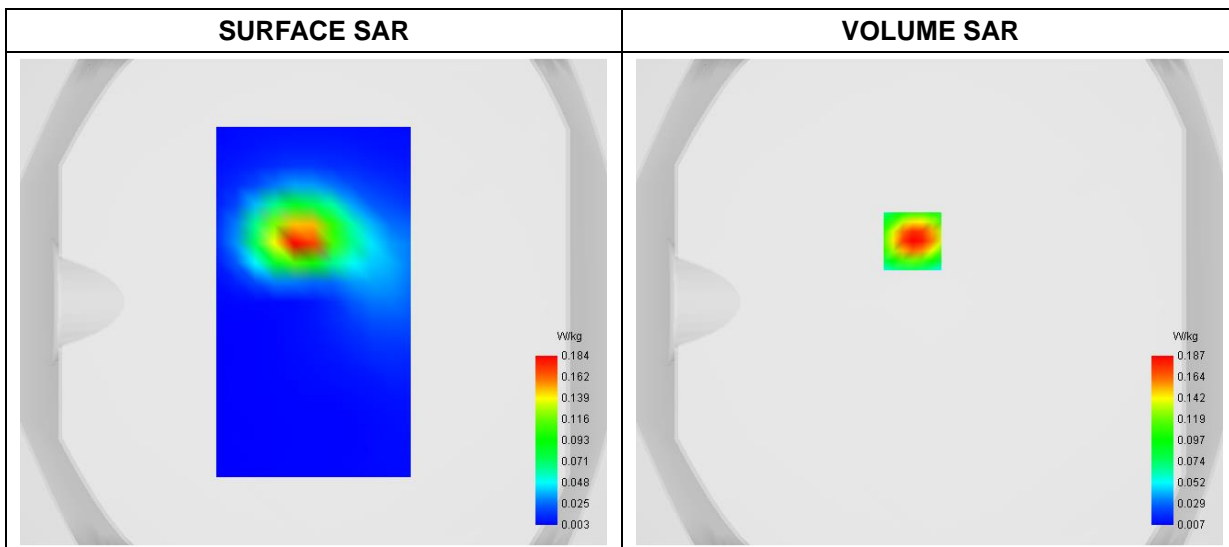
A. Experimental conditions

Area Scan	dx=8mm dy=8mm
Zoom Scan	dx=4mm dy=4mm dz=2mm
Phantom	Flat Plane
Device Position	Back
Band	WiFi(5.3GHz)_802.11a-ANT0
Channels	Low
Signal	Duty Cycle: 1:1

B. SAR Measurement Results

Frequency (MHz)	5260.000000
Relative Permittivity (real part)	36.753487
Conductivity (S/m)	4.690269
Power Variation (%)	1.694700
Ambient Temperature	22.6
Liquid Temperature	22.6

C. SAR Surface and Volume



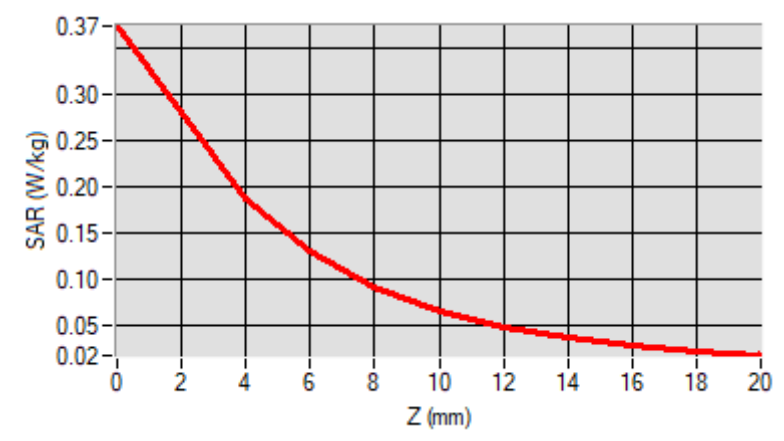
Maximum location: X=-7.00, Y=25.00

D. SAR 1g & 10g

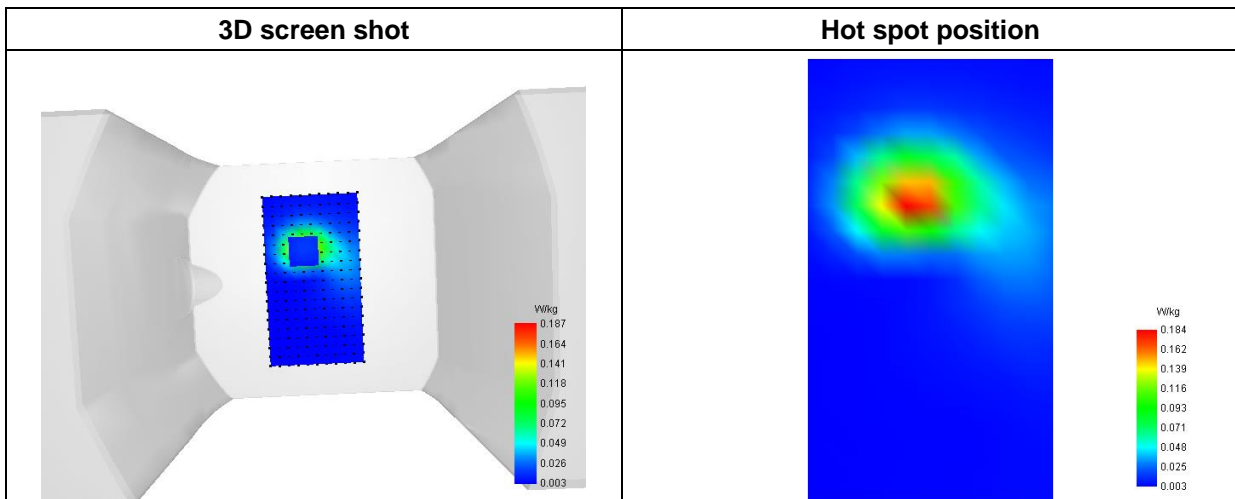
SAR 10g (W/Kg)	0.078382
SAR 1g (W/Kg)	0.173995

E. Z Axis Scan

Z (mm)	0.00	4.00	6.00	8.00	10.00	12.00	14.00	16.00	18.00
SAR (W/Kg)	0.3729	0.1867	0.1305	0.0911	0.0648	0.0472	0.0354	0.0272	0.0213



F. 3D Image



MEASUREMENT 67

Type: Phone measurement (Complete)

Date of measurement: 2024-04-17

Measurement duration: 12 minutes 3 seconds

E-field Probe: SSE2 - SN 18/21 EPGO356; ConvF: 2.25; Calibrated: 2023-07-07

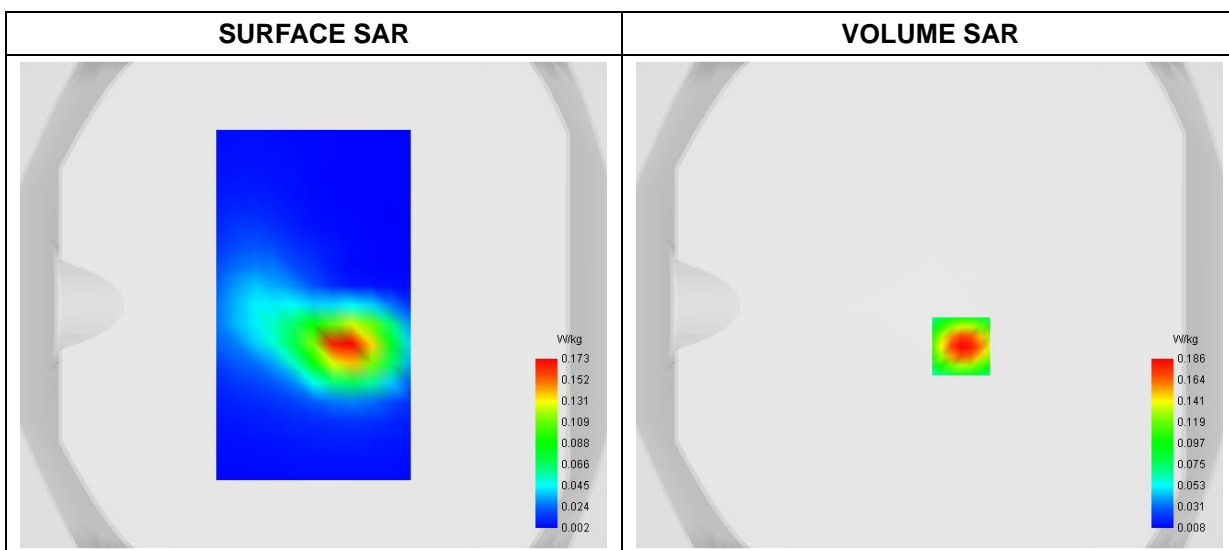
A. Experimental conditions

Area Scan	dx=8mm dy=8mm
Zoom Scan	dx=4mm dy=4mm dz=2mm
Phantom	Flat Plane
Device Position	Back
Band	WiFi(5.6GHz)_802.11a-ANT0
Channels	Low
Signal	Duty Cycle: 1:1

B. SAR Measurement Results

Frequency (MHz)	5500.000000
Relative Permittivity (real part)	36.722153
Conductivity (S/m)	5.112359
Power Variation (%)	1.548600
Ambient Temperature	22.6
Liquid Temperature	22.6

C. SAR Surface and Volume



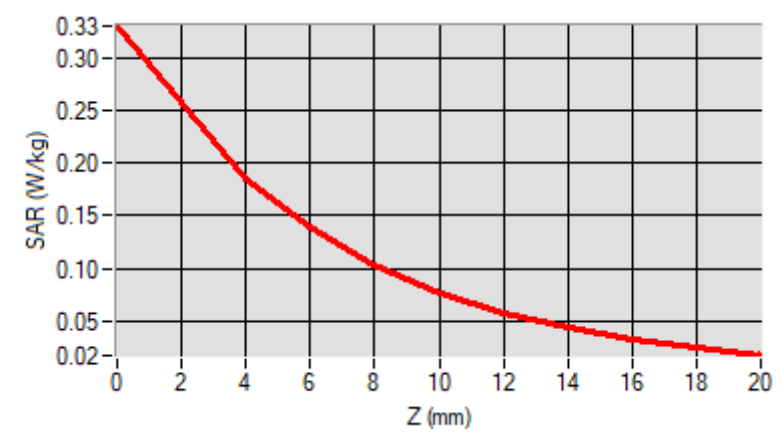
Maximum location: X=13.00, Y=-17.00

D. SAR 1g & 10g

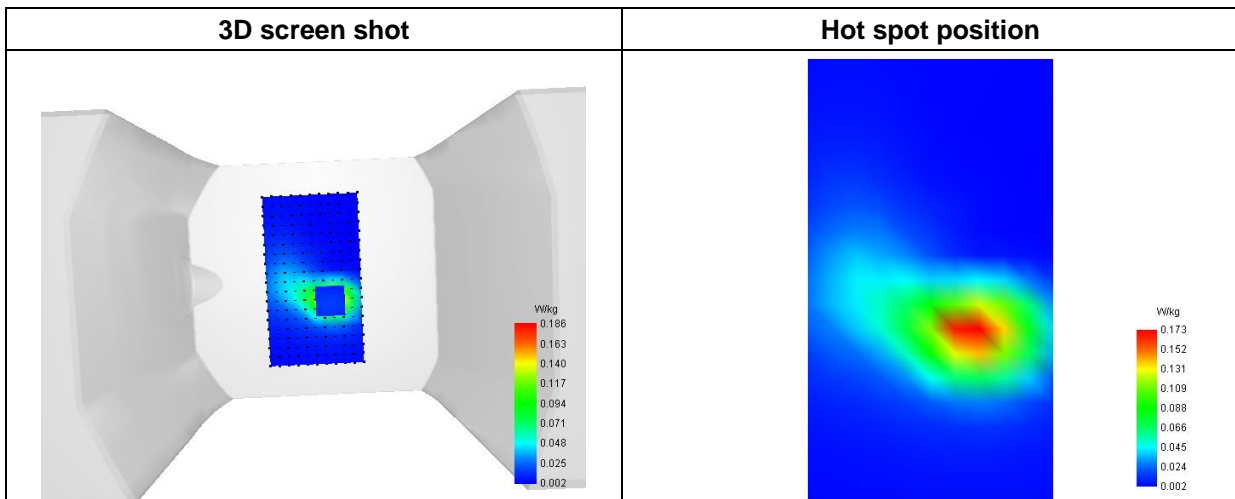
SAR 10g (W/Kg)	0.078540
SAR 1g (W/Kg)	0.169698

E. Z Axis Scan

Z (mm)	0.00	4.00	6.00	8.00	10.00	12.00	14.00	16.00	18.00
SAR (W/Kg)	0.3296	0.1857	0.1385	0.1029	0.0769	0.0578	0.0435	0.0327	0.0242



F. 3D Image



MEASUREMENT 68

Type: Phone measurement (Complete)

Date of measurement: 2024-04-17

Measurement duration: 12 minutes 3 seconds

E-field Probe: SSE2 - SN 18/21 EPGO356; ConvF: 2.15; Calibrated: 2023-07-07

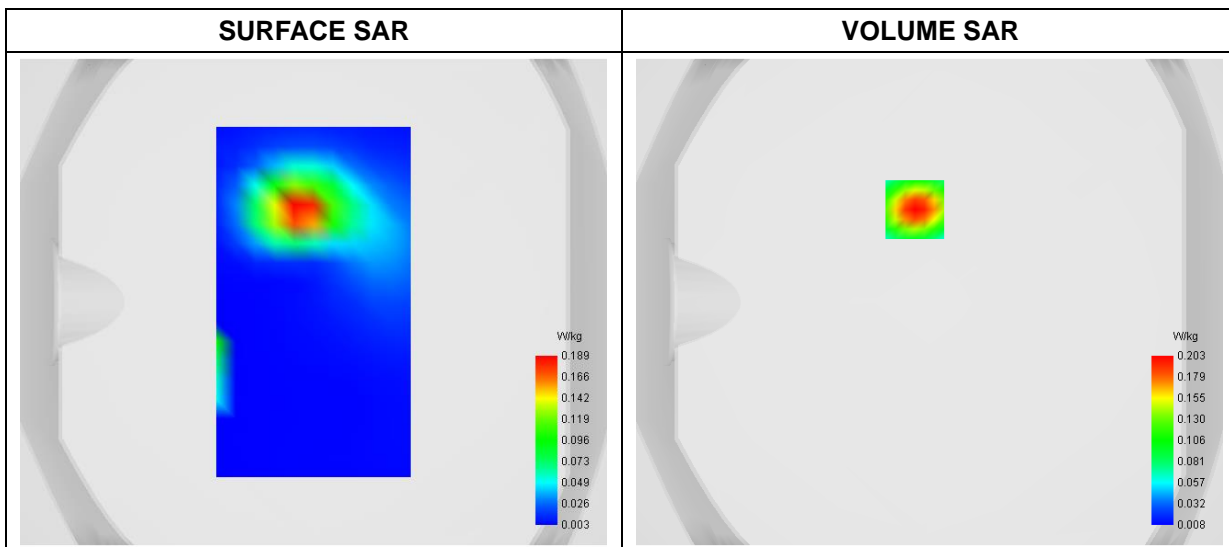
A. Experimental conditions

Area Scan	dx=8mm dy=8mm
Zoom Scan	dx=4mm dy=4mm dz=2mm
Phantom	Flat Plane
Device Position	Back
Band	WiFi(5.8GHz)_802.11a-ANT0
Channels	Middle
Signal	Duty Cycle: 1:1

B. SAR Measurement Results

Frequency (MHz)	5825.000000
Relative Permittivity (real part)	36.343841
Conductivity (S/m)	5.192285
Power Variation (%)	3.284700
Ambient Temperature	22.6
Liquid Temperature	22.6

C. SAR Surface and Volume



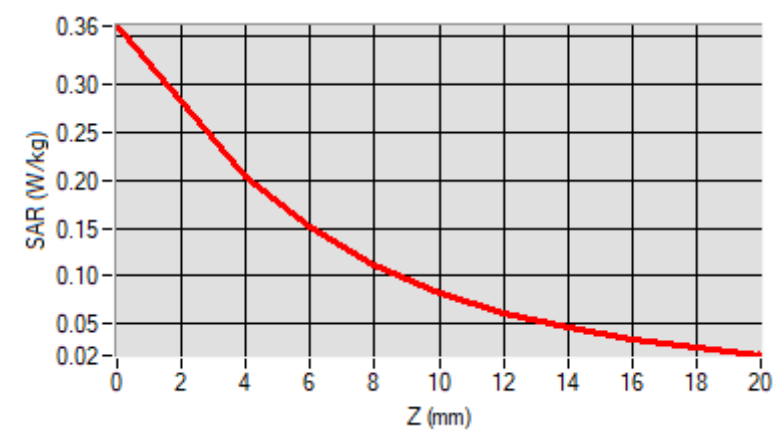
Maximum location: X=-6.00, Y=38.00

D. SAR 1g & 10g

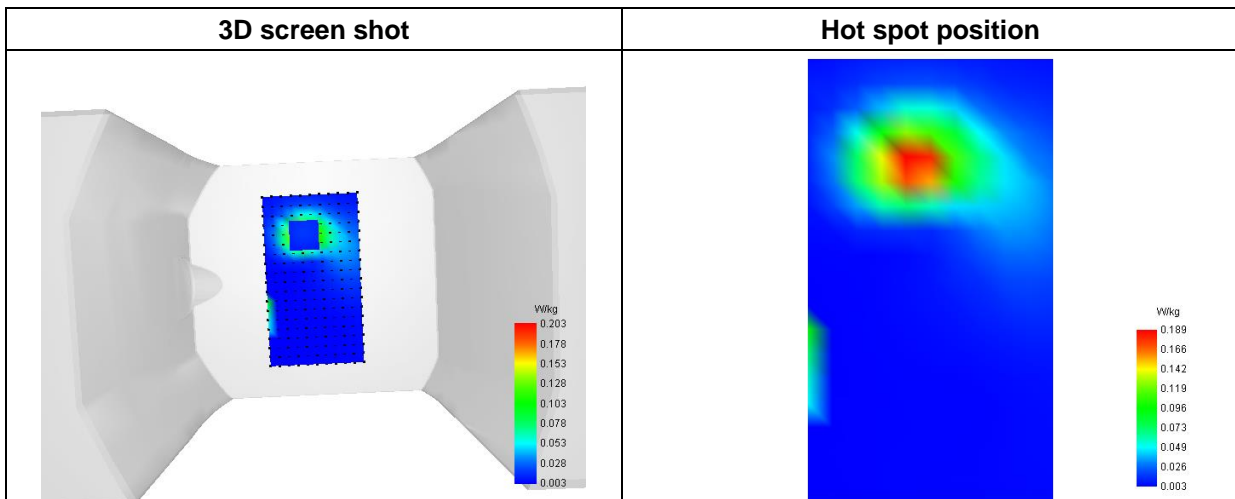
SAR 10g (W/Kg)	0.084466
SAR 1g (W/Kg)	0.184622

E. Z Axis Scan

Z (mm)	0.00	4.00	6.00	8.00	10.00	12.00	14.00	16.00	18.00
SAR (W/Kg)	0.3614	0.2034	0.1513	0.1120	0.0831	0.0619	0.0460	0.0340	0.0246



F. 3D Image



MEASUREMENT 69

Type: Phone measurement (Complete)

Date of measurement: 2024-04-12

Measurement duration: 12 minutes 3 seconds

E-field Probe: SSE2 - SN 18/21 EPGO356; ConvF: 2.29; Calibrated: 2023-07-07

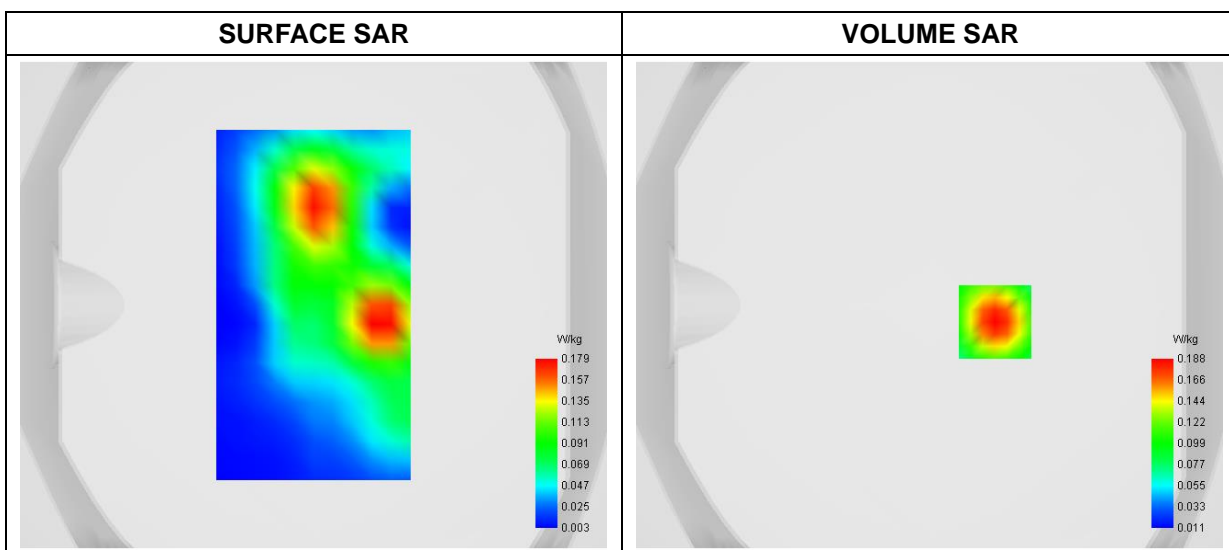
A. Experimental conditions

Area Scan	dx=8mm dy=8mm
Zoom Scan	dx=5mm dy=5mm dz=4mm
Phantom	Flat Plane
Device Position	Back
Band	WiFi(2.4GHz)_802.11b-ANT0
Channels	High
Signal	Duty Cycle: 1:1

B. SAR Measurement Results

Frequency (MHz)	2462.000000
Relative Permittivity (real part)	39.123546
Conductivity (S/m)	1.764292
Power Variation (%)	3.217400
Ambient Temperature	22.5
Liquid Temperature	22.5

C. SAR Surface and Volume



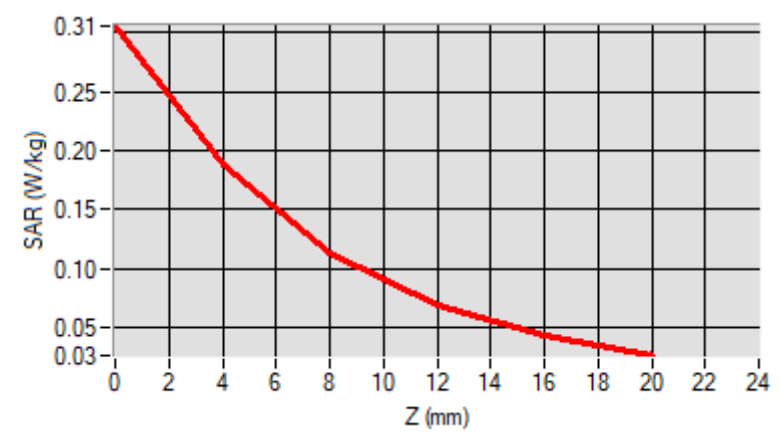
Maximum location: X=27.00, Y=-7.00

D. SAR 1g & 10g

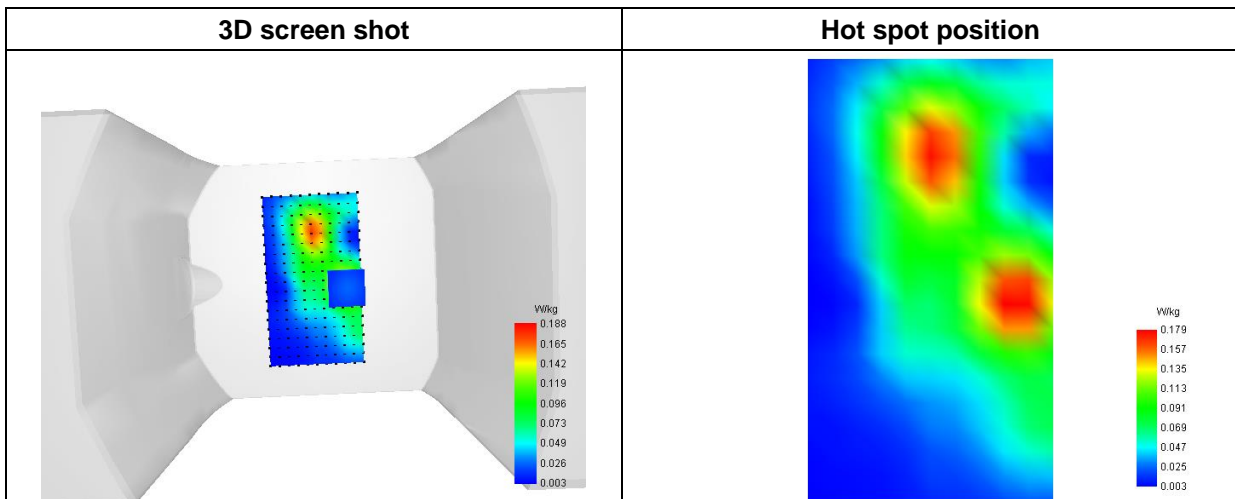
SAR 10g (W/Kg)	0.092098
SAR 1g (W/Kg)	0.173902

E. Z Axis Scan

Z (mm)	0.00	4.00	8.00	12.00	16.00
SAR (W/Kg)	0.3057	0.1880	0.1135	0.0690	0.0431



F. 3D Image



MEASUREMENT 70

Type: Phone measurement (Complete)

Date of measurement: 2024-04-16

Measurement duration: 12 minutes 3 seconds

E-field Probe: SSE2 - SN 18/21 EPGO356; ConvF: 1.91; Calibrated: 2023-07-07

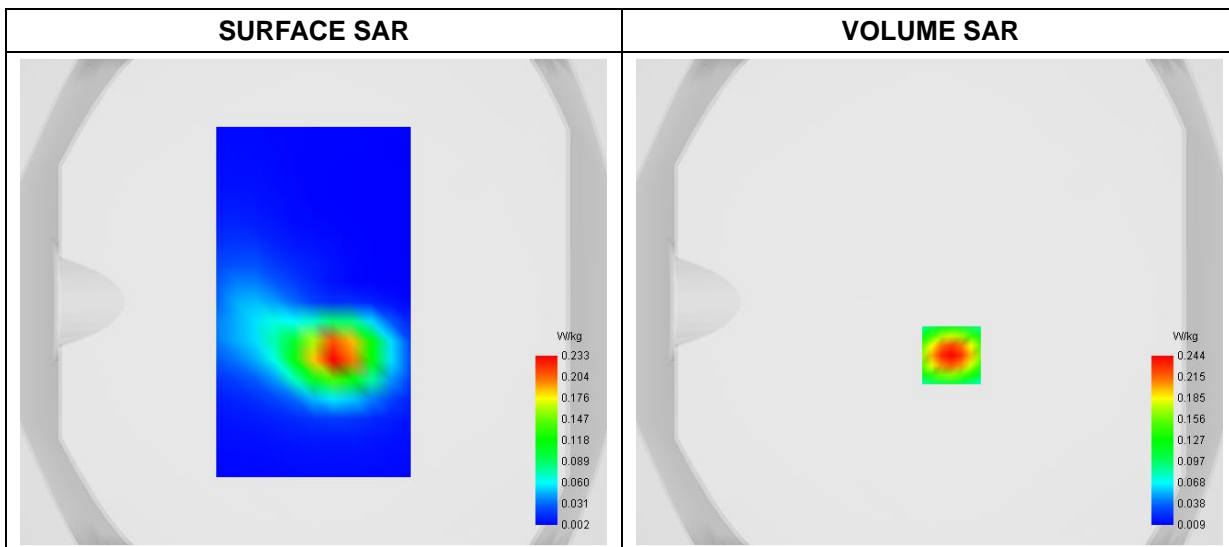
A. Experimental conditions

Area Scan	dx=8mm dy=8mm
Zoom Scan	dx=4mm dy=4mm dz=2mm
Phantom	Flat Plane
Device Position	Back
Band	WiFi(5.2GHz)_802.11a-ANT1
Channels	High
Signal	Duty Cycle: 1:1

B. SAR Measurement Results

Frequency (MHz)	5240.000000
Relative Permittivity (real part)	36.752916
Conductivity (S/m)	4.693432
Power Variation (%)	1.348900
Ambient Temperature	22.6
Liquid Temperature	22.6

C. SAR Surface and Volume



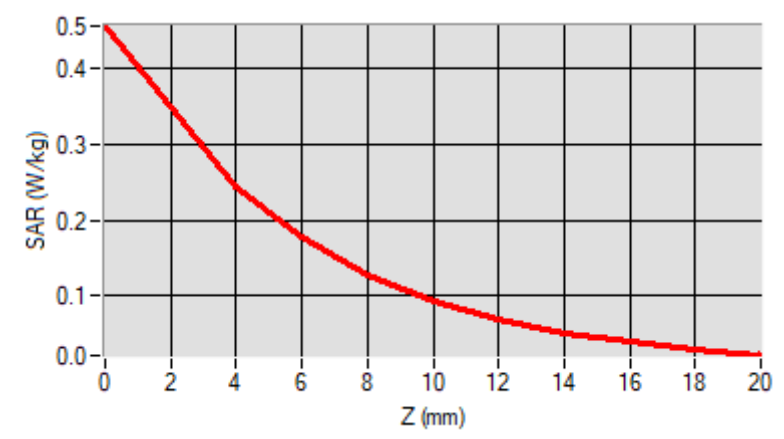
Maximum location: X=9.00, Y=-22.00

D. SAR 1g & 10g

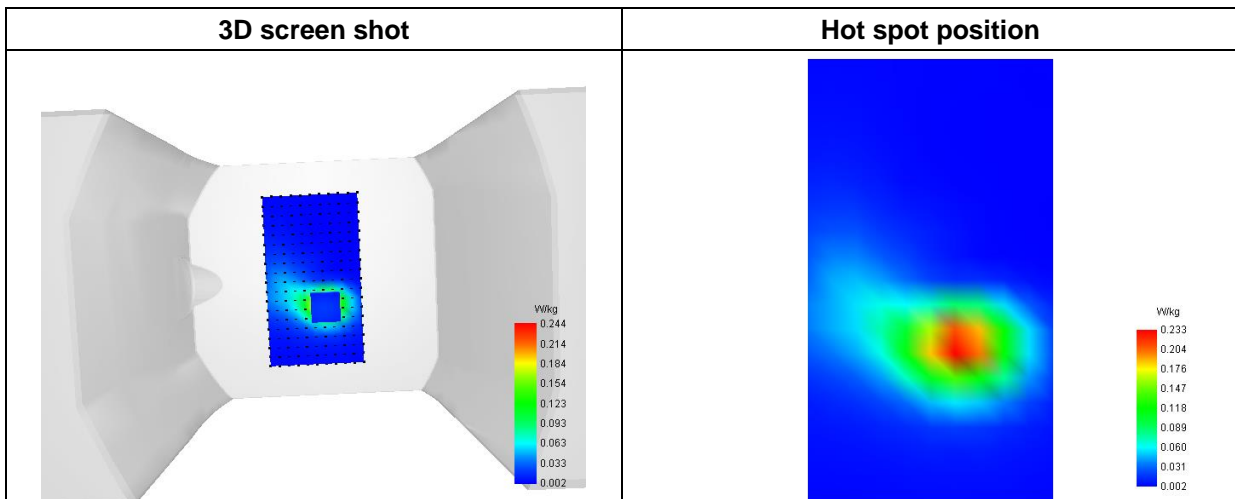
SAR 10g (W/Kg)	0.099823
SAR 1g (W/Kg)	0.221417

E. Z Axis Scan

Z (mm)	0.00	4.00	6.00	8.00	10.00	12.00	14.00	16.00	18.00
SAR (W/Kg)	0.4564	0.2442	0.1770	0.1278	0.0932	0.0687	0.0512	0.0383	0.0285



F. 3D Image



MEASUREMENT 71

Type: Phone measurement (Complete)

Date of measurement: 2024-04-16

Measurement duration: 12 minutes 3 seconds

E-field Probe: SSE2 - SN 18/21 EPGO356; ConvF: 1.91; Calibrated: 2023-07-07

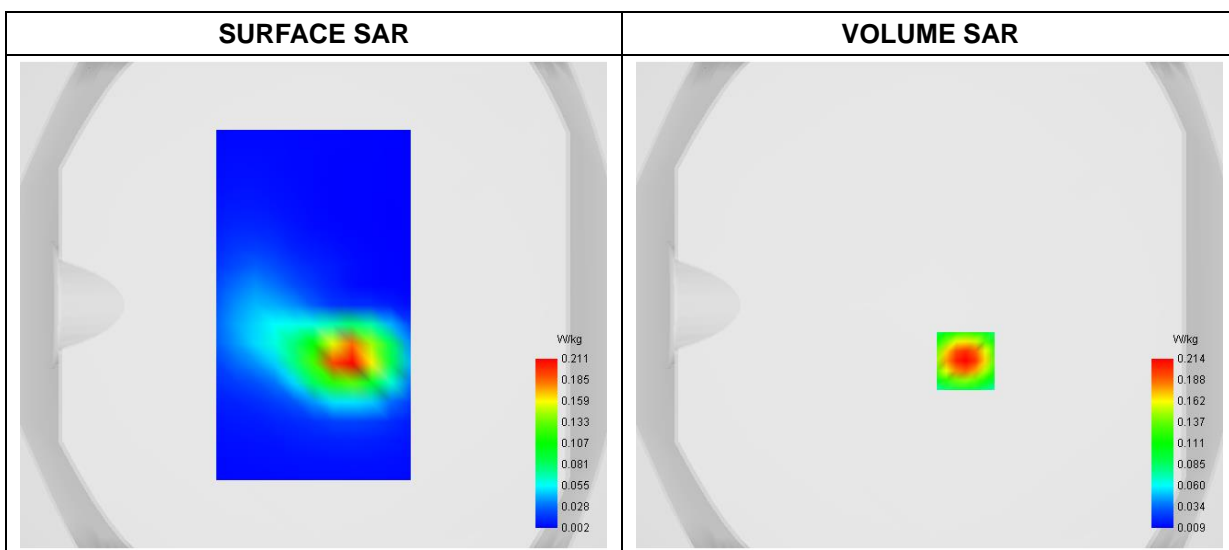
A. Experimental conditions

Area Scan	dx=8mm dy=8mm
Zoom Scan	dx=4mm dy=4mm dz=2mm
Phantom	Flat Plane
Device Position	Back
Band	WiFi(5.3GHz)_802.11a-ANT1
Channels	Middle
Signal	Duty Cycle: 1:1

B. SAR Measurement Results

Frequency (MHz)	5280.000000
Relative Permittivity (real part)	36.754129
Conductivity (S/m)	4.692694
Power Variation (%)	0.551700
Ambient Temperature	22.6
Liquid Temperature	22.6

C. SAR Surface and Volume



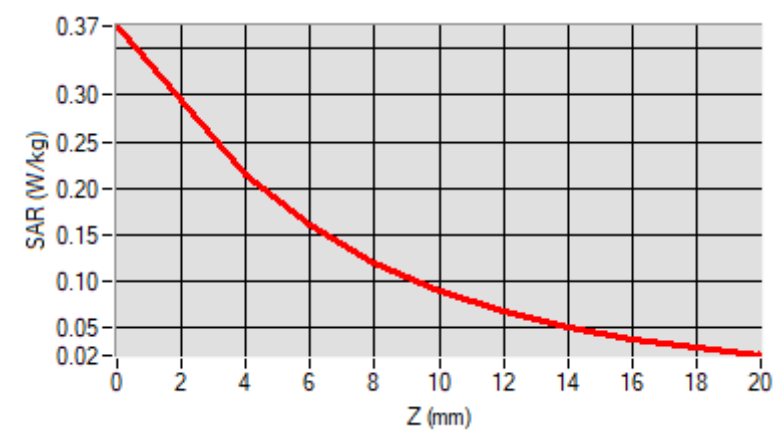
Maximum location: X=15.00, Y=-23.00

D. SAR 1g & 10g

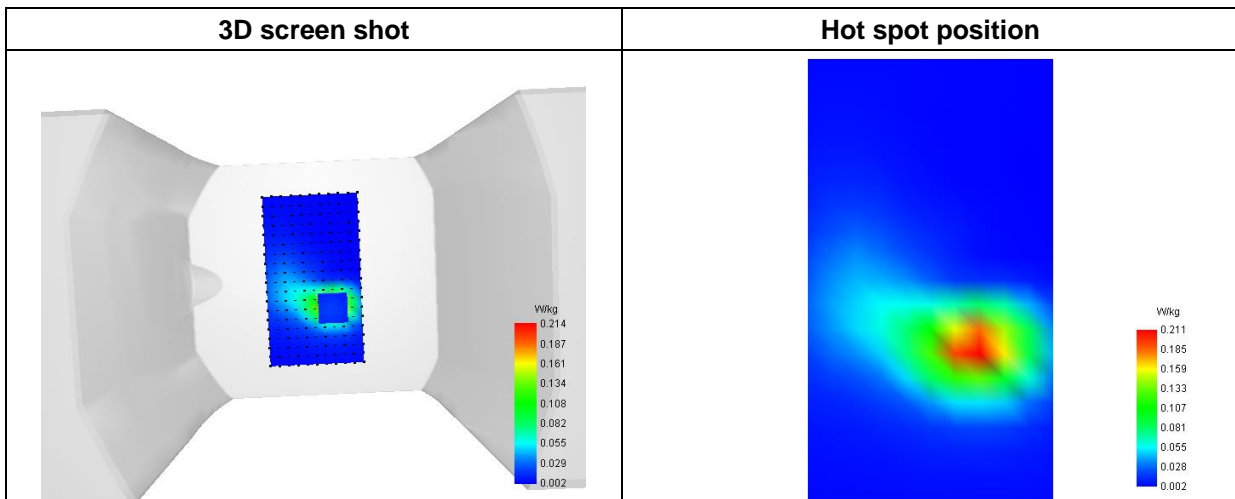
SAR 10g (W/Kg)	0.089874
SAR 1g (W/Kg)	0.193215

E. Z Axis Scan

Z (mm)	0.00	4.00	6.00	8.00	10.00	12.00	14.00	16.00	18.00
SAR (W/Kg)	0.3747	0.2137	0.1602	0.1195	0.0894	0.0670	0.0502	0.0373	0.0272



F. 3D Image



MEASUREMENT 72

Type: Phone measurement (Complete)

Date of measurement: 2024-04-17

Measurement duration: 12 minutes 3 seconds

E-field Probe: SSE2 - SN 18/21 EPGO356; ConvF: 2.25; Calibrated: 2023-07-07

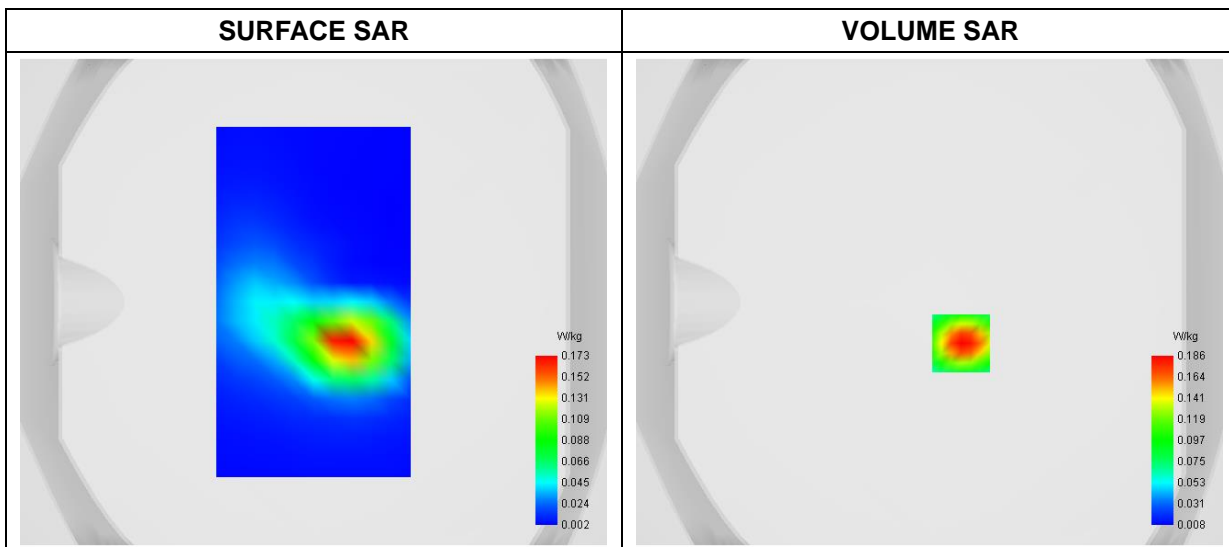
A. Experimental conditions

Area Scan	dx=8mm dy=8mm
Zoom Scan	dx=4mm dy=4mm dz=2mm
Phantom	Flat Plane
Device Position	Back
Band	WiFi(5.6GHz)_802.11a-ANT1
Channels	Low
Signal	Duty Cycle: 1:1

B. SAR Measurement Results

Frequency (MHz)	5500.000000
Relative Permittivity (real part)	36.722153
Conductivity (S/m)	5.112359
Power Variation (%)	1.481200
Ambient Temperature	22.6
Liquid Temperature	22.6

C. SAR Surface and Volume



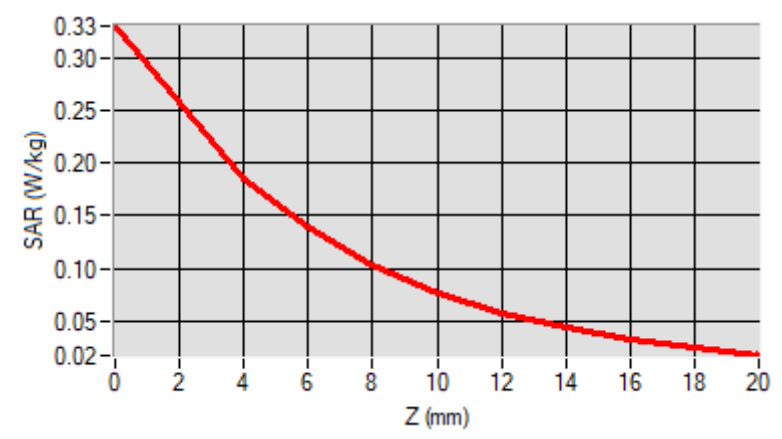
Maximum location: X=13.00, Y=-17.00

D. SAR 1g & 10g

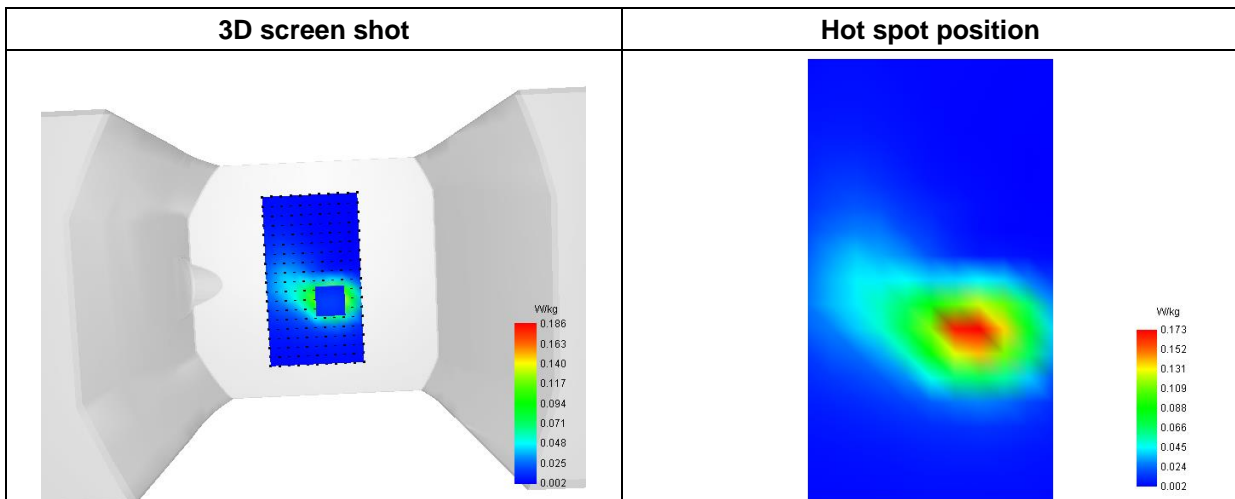
SAR 10g (W/Kg)	0.078540
SAR 1g (W/Kg)	0.169698

E. Z Axis Scan

Z (mm)	0.00	4.00	6.00	8.00	10.00	12.00	14.00	16.00	18.00
SAR (W/Kg)	0.3296	0.1857	0.1385	0.1029	0.0769	0.0578	0.0435	0.0327	0.0242



F. 3D Image



MEASUREMENT 73

Type: Phone measurement (Complete)

Date of measurement: 2024-04-17

Measurement duration: 12 minutes 3 seconds

E-field Probe: SSE2 - SN 18/21 EPGO356; ConvF: 2.15; Calibrated: 2023-07-07

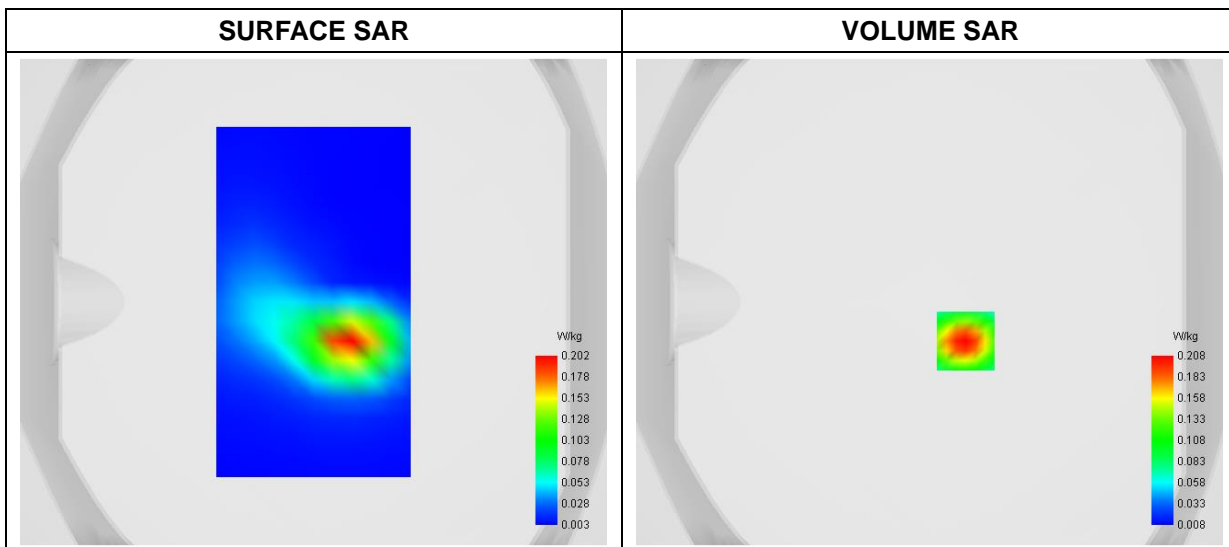
A. Experimental conditions

Area Scan	dx=8mm dy=8mm
Zoom Scan	dx=4mm dy=4mm dz=2mm
Phantom	Flat Plane
Device Position	Back
Band	WiFi(5.8GHz)_802.11n(HT20)-ANT1
Channels	High
Signal	Duty Cycle: 1:1

B. SAR Measurement Results

Frequency (MHz)	5825.000000
Relative Permittivity (real part)	36.343841
Conductivity (S/m)	5.192285
Power Variation (%)	1.288200
Ambient Temperature	22.6
Liquid Temperature	22.6

C. SAR Surface and Volume



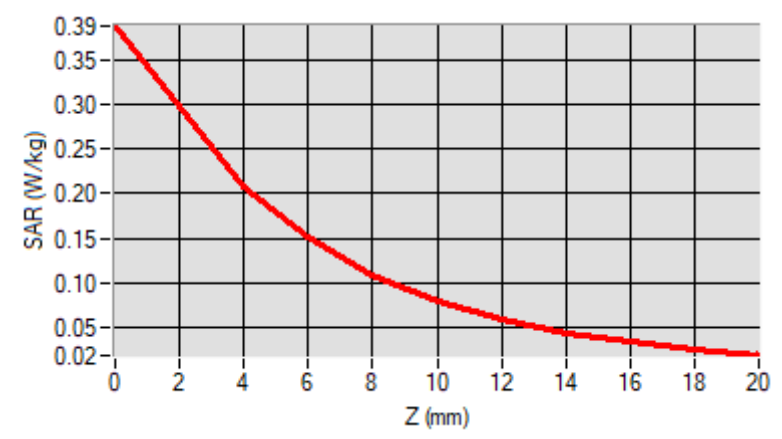
Maximum location: X=15.00, Y=-16.00

D. SAR 1g & 10g

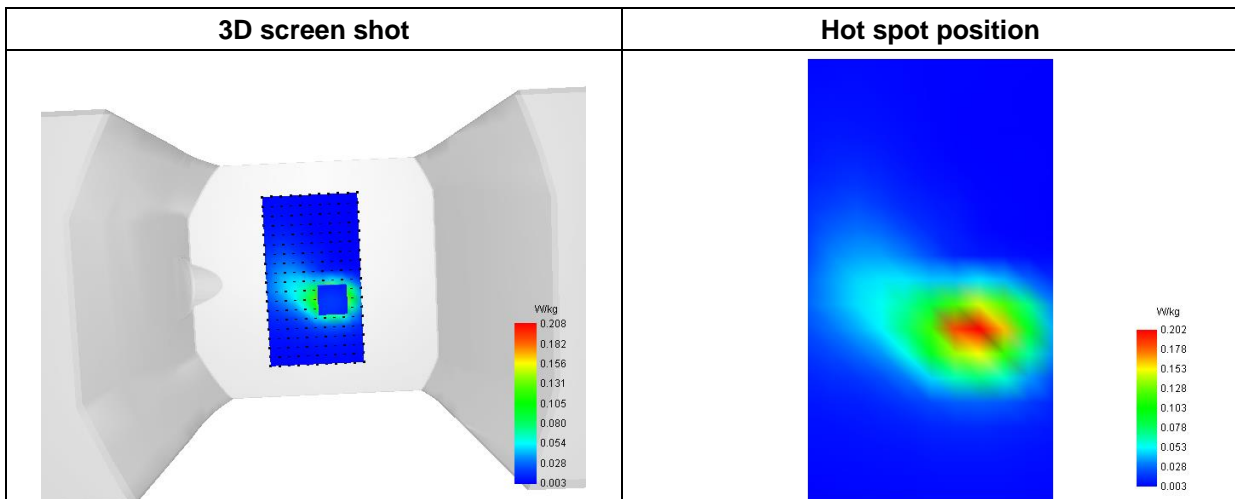
SAR 10g (W/Kg)	0.085927
SAR 1g (W/Kg)	0.189057

E. Z Axis Scan

Z (mm)	0.00	4.00	6.00	8.00	10.00	12.00	14.00	16.00	18.00
SAR (W/Kg)	0.3880	0.2077	0.1507	0.1090	0.0796	0.0588	0.0440	0.0331	0.0248



F. 3D Image



MEASUREMENT 74

Type: Phone measurement (Complete)
 Date of measurement: 2024-04-12
 Measurement duration: 12 minutes 3 seconds

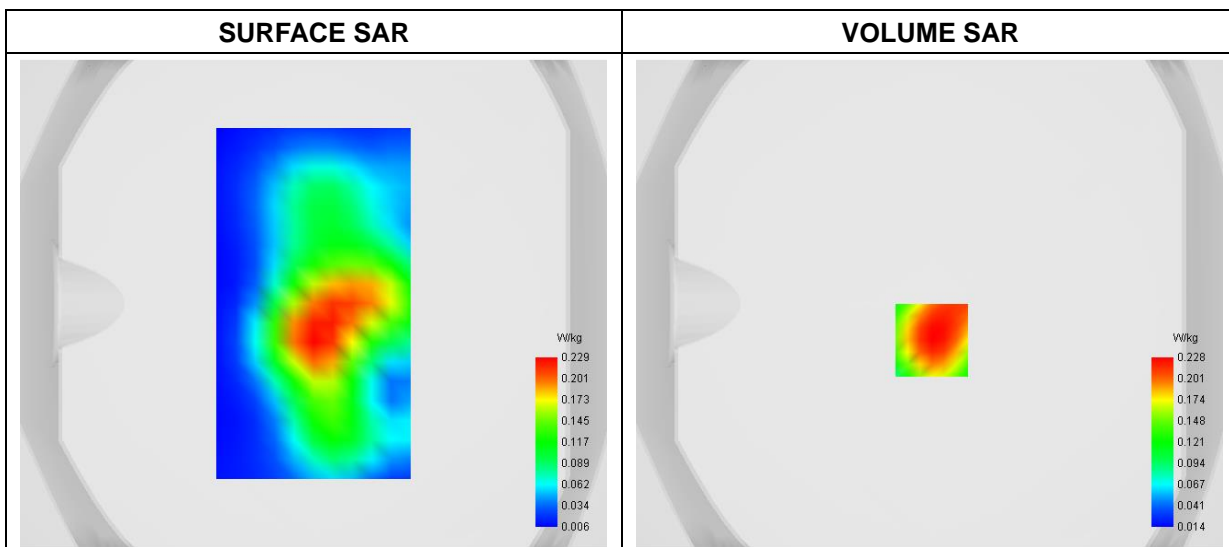
A. Experimental conditions

Area Scan	dx=8mm dy=8mm
Zoom Scan	dx=5mm dy=5mm dz=4mm
Phantom	Flat Plane
Device Position	Back
Band	WiFi(2.4GHz)_802.11b-ANT1
Channels	Low
Signal	Duty Cycle: 1:1

B. SAR Measurement Results

Frequency (MHz)	2412.000000
Relative Permittivity (real part)	39.121352
Conductivity (S/m)	1.7641922
Power Variation (%)	2.118700
Ambient Temperature	22.5
Liquid Temperature	22.5

C. SAR Surface and Volume



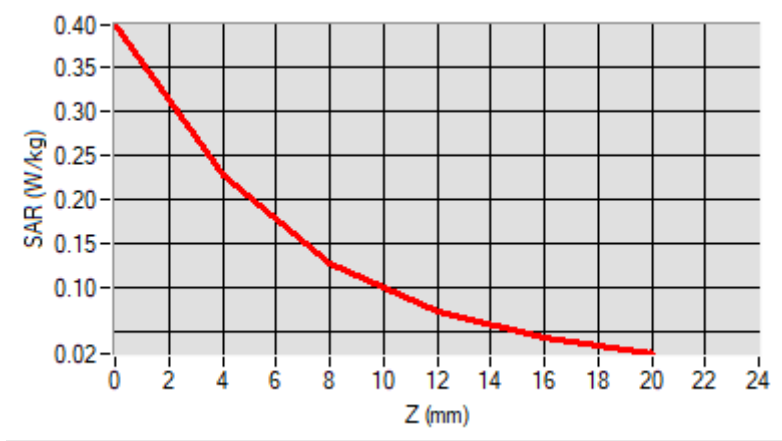
Maximum location: X=1.00, Y=-15.00

D. SAR 1g & 10g

SAR 10g (W/Kg)	0.117204
SAR 1g (W/Kg)	0.217887

E. Z Axis Scan

Z (mm)	0.00	4.00	8.00	12.00	16.00
SAR (W/Kg)	0.3975	0.2280	0.1271	0.0714	0.0421



F. 3D Image

