

Shenzhen Haotiancheng Wireless Technology Co. Ltd:  
 Room 505, Building L, Runji Building, Lane 2, Liuxian  
 1st Road, Bao'an District, Shenzhen

## Material Acknowledgement

Suppliers: Shenzhen Haotiancheng Wireless Technology Co.Ltd

AS65U-MAIN-HTC AND

AS65U-DIV-HTC AND

Model: AS65U-WGB-HTC

Product Name: On the antenna assembly

Specification

s / Models: \_\_\_\_\_

**Antenna**

**trademark:** \_\_\_\_\_

Color: \_\_\_\_\_

Address: \_\_\_\_\_

Contact /

Phone: \_\_\_\_\_

### Supplier (with official seal)

Structural Department	R&D Department	Quality Department	Project Department	

### Customer review

ID Department	Structural Department / Special Project	Hardware Department	Packaging engineering	Quality Department

## Specifications

The report mainly provides AS65U GSM+WCDMA +LTE,performance parameter test, antenna for built-in antenna:

## 2、Electrical performance

### 2-1Specification Standard

The AS65U antenna operates in the

GSM-850 820-894MHz

GSM-900 880-960MHz

DCS-1800 1710-1880MHz

PCS-1900 1850-1990MHz

WCDMA-850 820-894MHz

WCDMA-1700 1710-2170MHz

WCDMA-1900 1850-1990MHz

LTE Band 2/25:1850-1990MHz

LTE Band 4:1710-1755MHz

LTE Band 5/26: 820-894MHz

LTE Band 7:2500-2570MHz

LTE Band 12: 699-716MHz

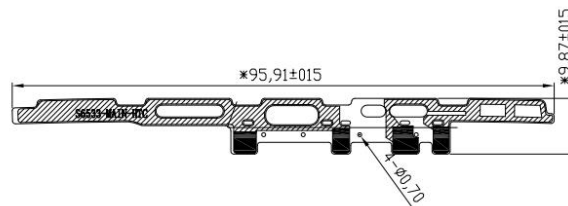
LTE Band 17:704-716MHz

LTE Band 41: 2535-2675MHz

LTE Band 66: 1710-1780MHz

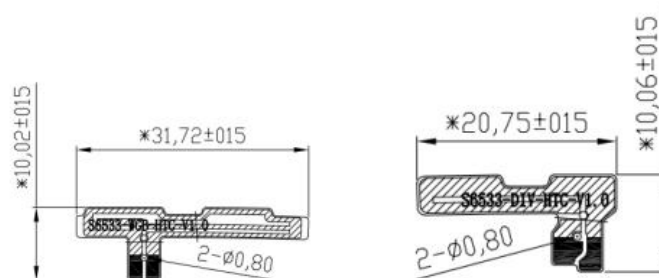
LTE Band 71: 663-698MHz, which generates resonances in this ;The following table shows the mass production performance test indicators for the AS65U design antenna:

GSM/WCDMA/LTE ant 95mm\*9.87mm



BT WIFI ANT 31mm\*10mm

DIV ANT 20mm\*10mm



2-2 gain test

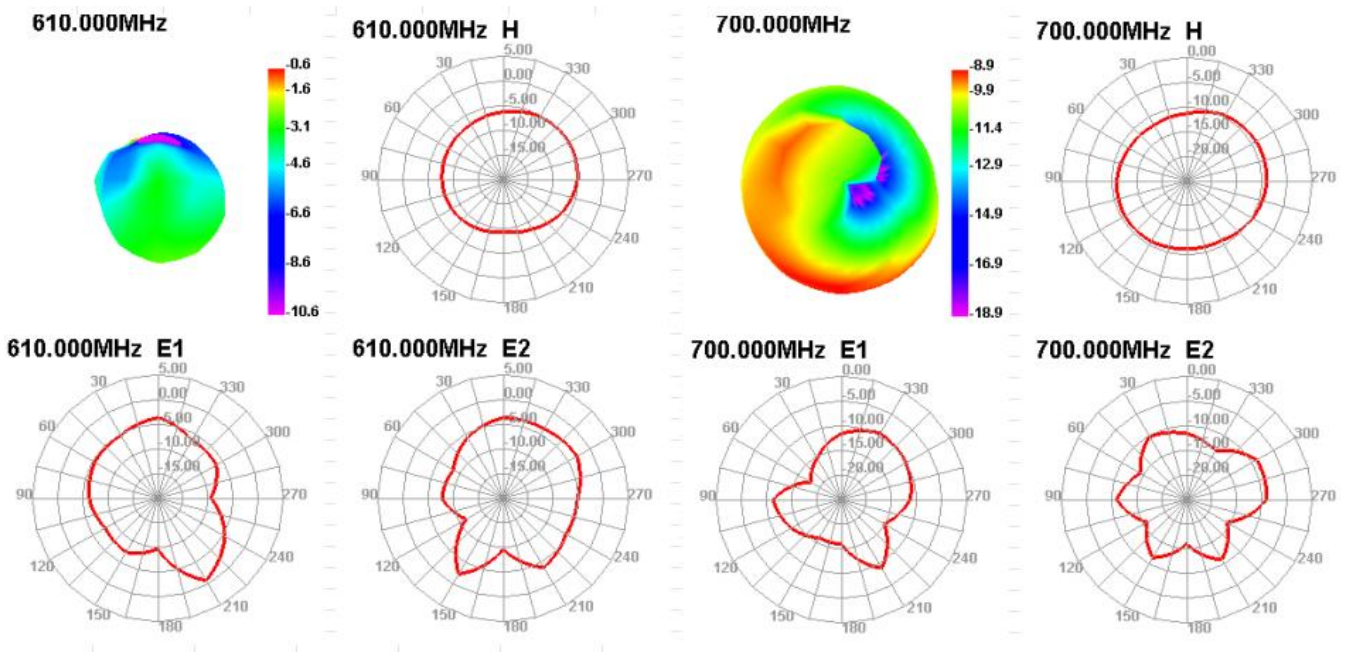
Main antenna gain

Freq (MHz)	Gain (dBi)	Freq (MHz)	Gain (dBi)	Freq (MHz)	Gain (dBi)	Freq (MHz)	Gain (dBi)	Freq (MHz)	Gain (dBi)
610	-0.61	720	-1.23	820	-4.94	1700	-2.75	2300	-0.72
620	-0.42	730	-0.59	830	-4.31	1710	-1.89	2310	-0.68
630	-0.23	740	0.83	840	-3.62	1720	-1.87	2320	-0.6
640	0.3	750	1	850	-3.13	1730	-1.37	2330	-0.24
650	-2.08	760	0.39	860	-2.5	1740	-0.58	2340	-0.27
660	-3.75	770	-0.98	870	-1.78	1750	-0.09	2350	-0.82
670	-4.71	780	-2.1	880	-1.52	1760	0.44	2360	-0.69
680	-6.4	790	-2.49	890	-1.28	1770	0.57	2370	-0.27
690	-7.33	800	-2.18	900	-1.3	1780	1.29	2380	-0.44
700	-8.91			910	-1.28	1790	1.36	2390	-0.42
				920	-1.77	1800	1.23	2400	-0.15
				930	-2.27	1810	1.43	2410	-0.27
				940	-3.04	1820	1.72	2420	-0.48
				950	-3.52	1830	1.9	2430	-0.43
				960	-4.09	1840	1.88	2440	0.2
						1850	2.21	2450	0.42
						1860	2.52	2460	-0.15
						1870	2.37	2470	0.12
						1880	2.47	2480	0.43
						1890	2.6	2490	0.42
						1900	2.47	2500	0.46
						1910	2.28	2510	0.22
						1920	2.33	2520	-0.03
						1930	2.58	2530	0.09
						1940	2.31	2540	0.2
						1950	2.01	2550	0.14
						1960	1.87	2560	0.04
						1970	1.64	2570	0.8
						1980	1.13	2580	0.87
						1990	0.51	2590	0.56
						2000	0.85	2600	1.36
						2010	0.82	2610	1.63
						2020	0.5	2620	1.12
						2030	0.57	2630	1.17
						2040	0.46	2640	1.75
						2050	-0.05	2650	1.71
						2060	0.4	2660	1.07
						2070	0.75	2670	1.16
						2080	0.75	2680	1.48
						2090	0.49	2690	0.57
						2100	0.53		
						2110	-0.16		
						2120	-0.61		
						2130	-1.11		
						2140	-0.87		
						2150	-1.12		
						2160	-1		
						2170	-0.61		

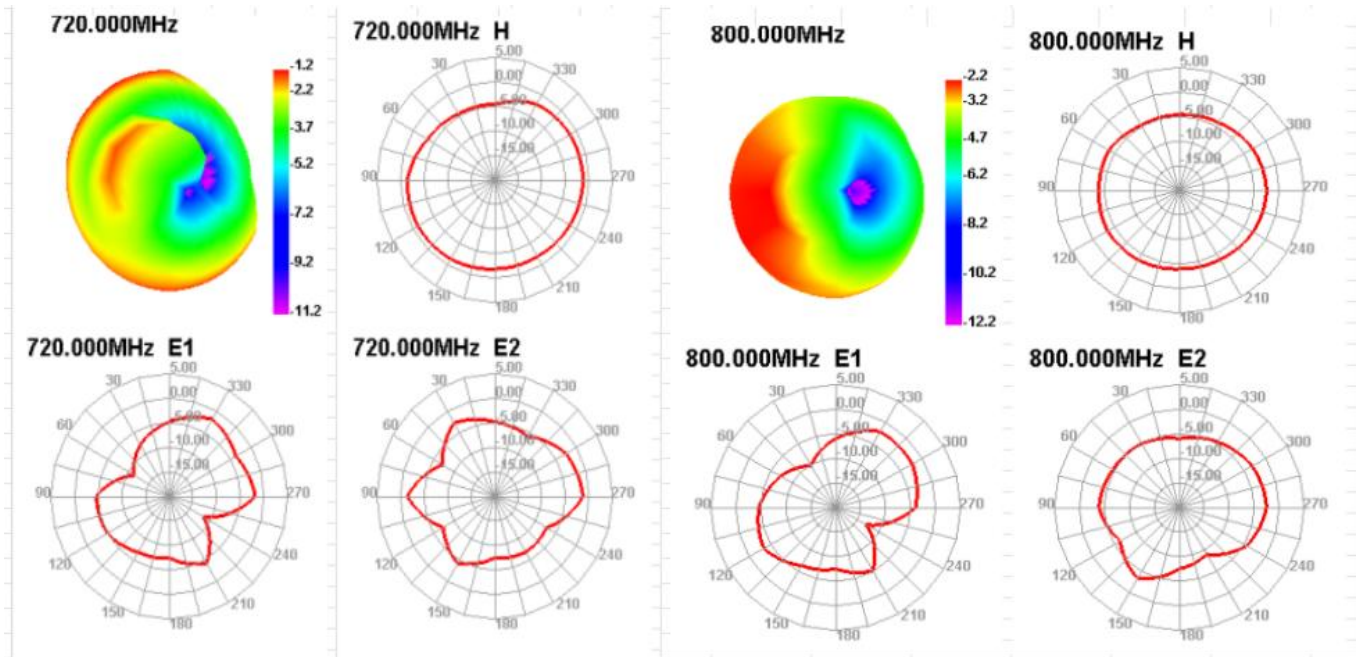
GPS/WIFI antenna gain

Freq (MHz)	Gain (dBi)	Freq (MHz)	Gain (dBi)
1550	0.76	2400	2.63
1555	0.84	2410	2.53
1560	1.02	2420	2.21
1565	1.4	2430	2.31
1570	1.31	2440	2.7
1575	1.41	2450	2.78
1580	1.49	2460	2.45
1585	1.05	2470	2.67
1590	1.08	2480	2.82
1595	1.13	2490	2.6
1600	0.79	2500	2.46

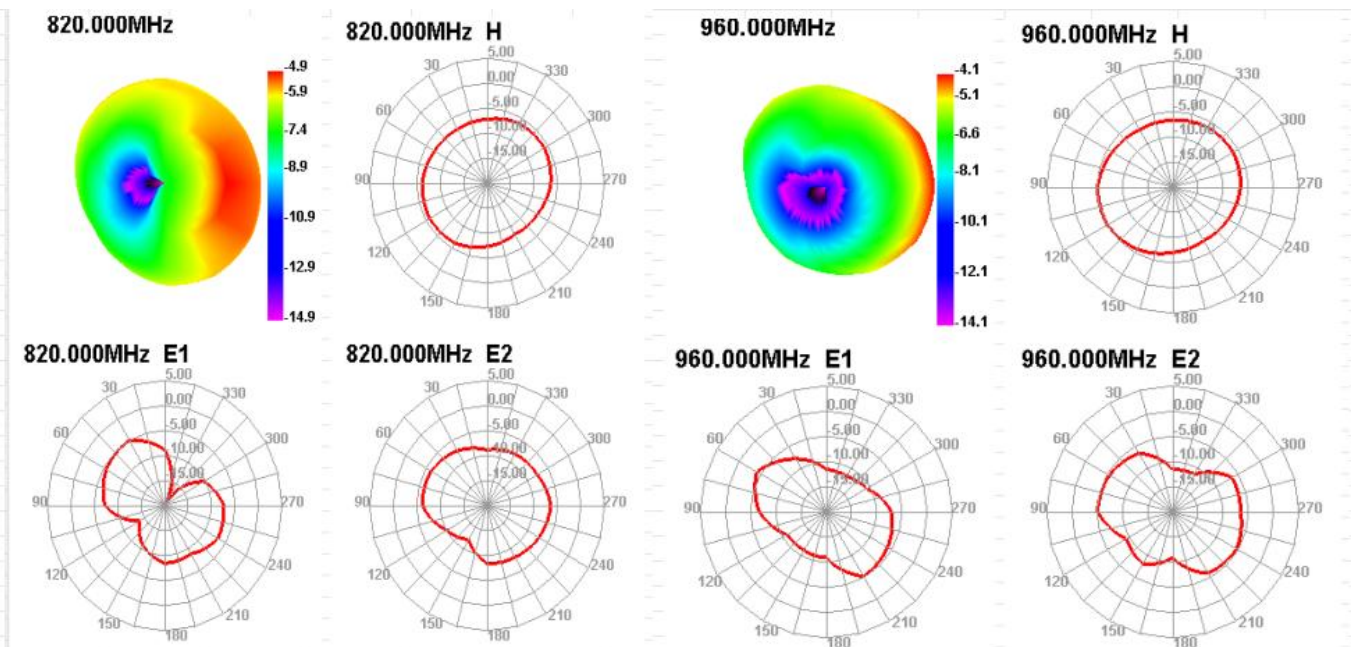
610MHz-700MHz



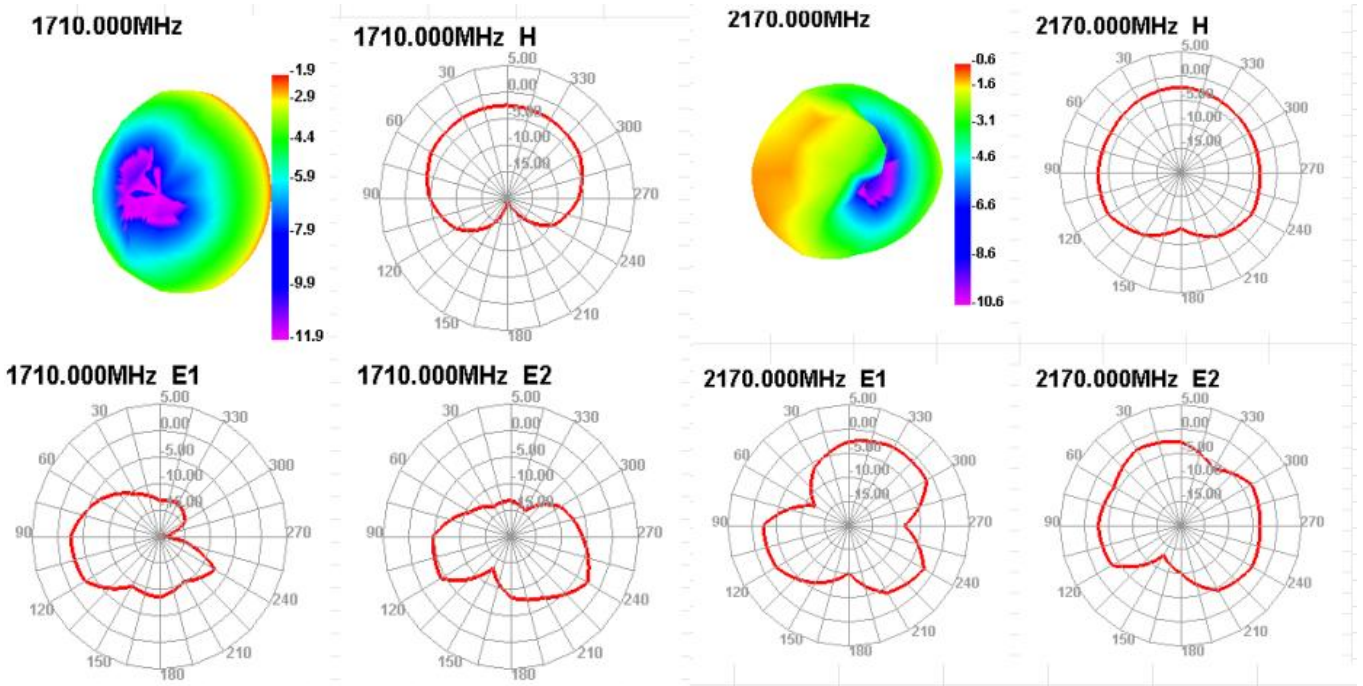
720MHz-800MHz



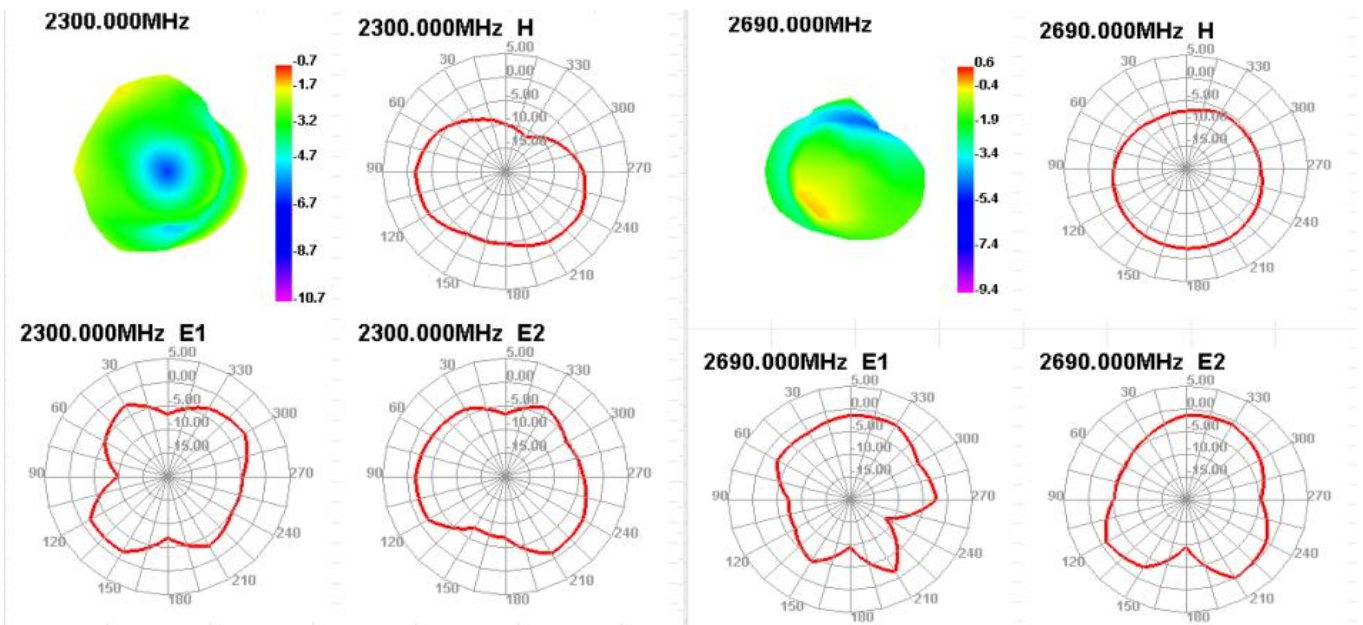
820MHz-960MHz



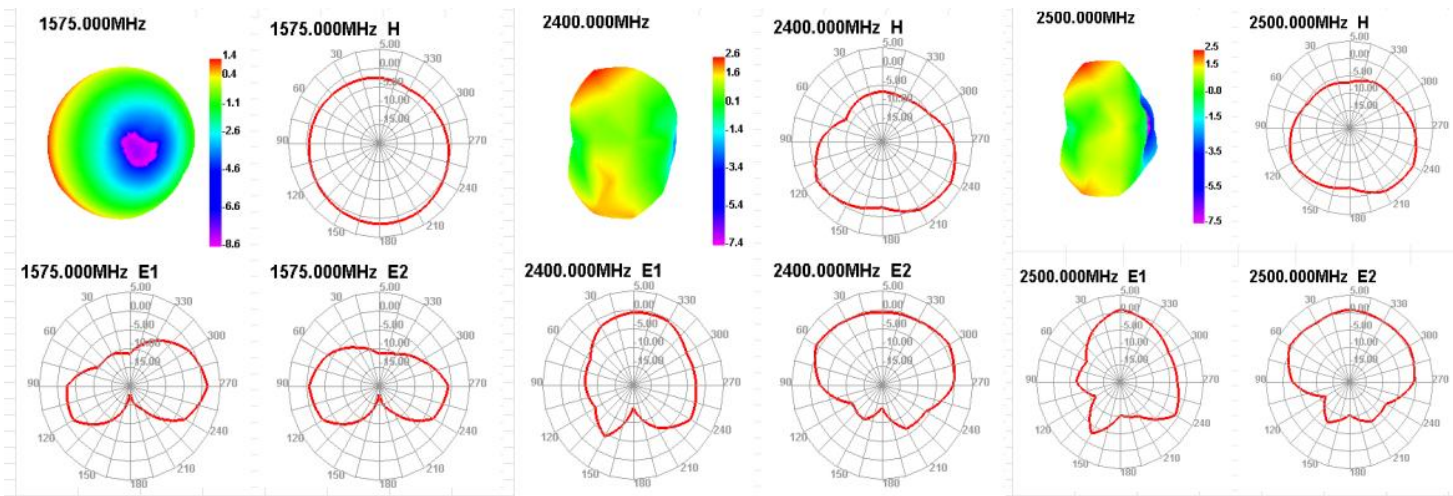
1710MHz-2170MHz



2300MHz-2690MHz



1575MHZ/2400MHZ-2500MHZ



2-3 Active antenna test data

Band	TRP/TIS	L	M	H	Band	TRP/TIS	L	M	H
GSM850	TRP	25.66	25.48	25.37	LTE-B5	TRP	16.50	16.43	16.26
	TIS			-103.25		TIS			-91.19
GSM900	TRP	26.14	25.72	25.50	LTE-B12	TRP	15.11	15.28	15.32
	TIS			-102.74		TIS			-90.35
DCS1800	TRP	23.20	23.35	23.58	LTE-B17	TRP	15.06	15.17	15.25
	TIS			-102.06		TIS			-90.08
PCS1900	TRP	23.01	23.18	23.27	LTE-B25	TRP	15.65	15.50	15.47
	TIS			-102.15		TIS			-90.18
WCDMA850	TRP	16.54	16.42	16.13	LTE-B26	TRP	16.36	16.24	16.19
	TIS			-104.34		TIS			-90.83
WCDMA1700	TRP	15.18	15.23	15.19	LTE-B66	TRP	15.29	15.47	15.64
	TIS			-104.22		TIS			-90.75
WCDMA1900	TRP	15.48	15.29	15.11	LTE-B71	TRP	15.03	15.12	15.24
	TIS			-104.39		TIS			-89.21
LTE-B2	TRP	15.45	15.32	15.14	LTE-B41	TRP	15.23	15.38	15.44
	TIS			-90.56		TIS			-87.59
LTE-B4	TRP	15.35	15.47	15.69					
	TIS			-90.42					