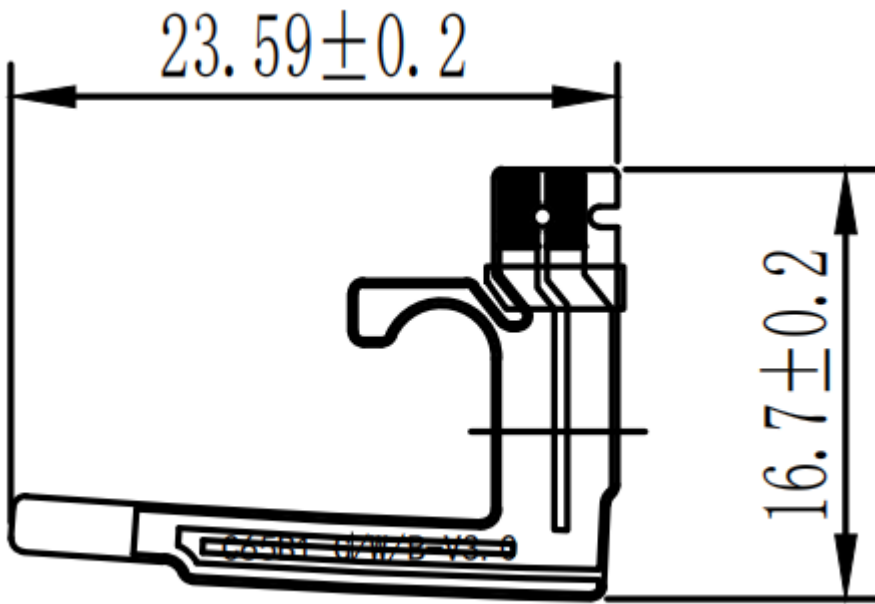


Shenzhen 3Good Wireless Technology Co., Ltd
Specification

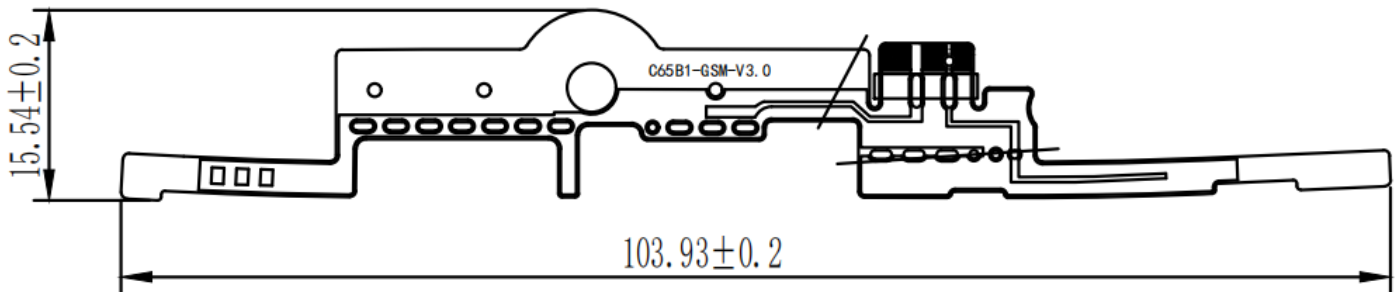
客户 Customer		规格型号 Specs	K651B1
三好料号 Part Number	C65-01 C65-02 C65-03	频 段 Frequency Band	BT&2.4G WIFI:2400~2483.5MHZ 5G WIFI: GSM850/900/1800/1900 WCDMA2/4/5 B2.4.5.12.13.17.66.71.41
颜 色 Color	black	版 本 Edition	REV:A1
销 售 Salesperson		设 计 Design	叶金强
结 构 Structure	李富伦	确 认 Confirm	周武
日 期 Date		签字日期 Signing Date	
客户确认 Customer confirmation:			
Join hands to create the future			

深圳市三好无线通信有限公司
深圳市宝安区大宝路 49-1 号金富来大厦 501-508

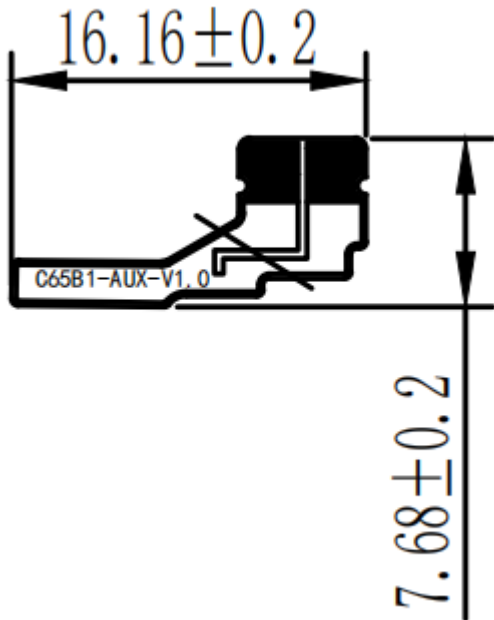
一. Three in one antenna



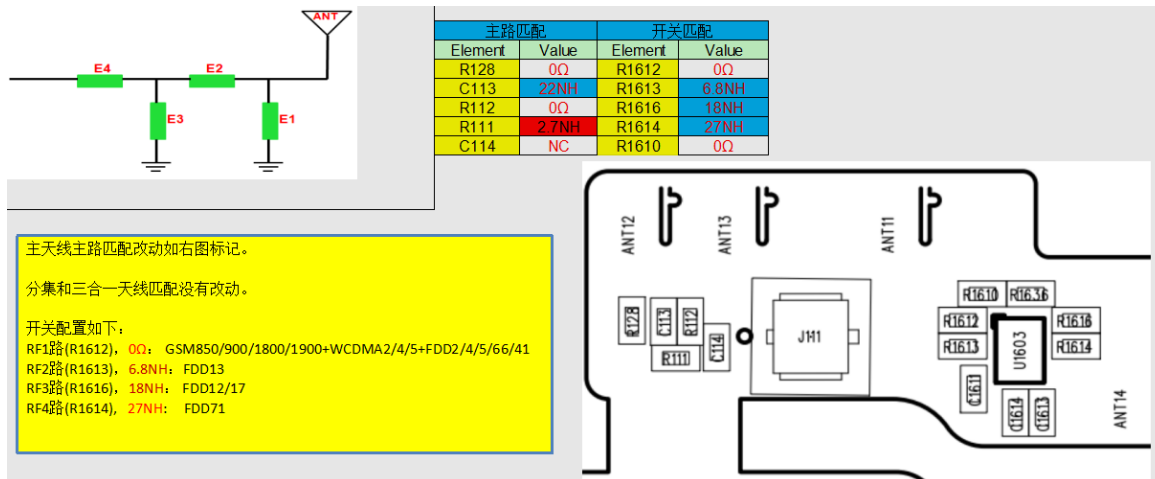
Main set antenna



Diversity antenna



二. Matching circuit of antenna



Structure of antenna: FPC

三、Test of parameters

1.Test settings

The connection of VSWR test device is:



Treatment of test fixture:

Use a hard cable to lead out the SMA-J connector from the 50 ohm test point of the antenna on the mobile phone PCB, connect it to the copper tube with a choke, and then connect other devices in turn.

Passive parameters of main antenna:

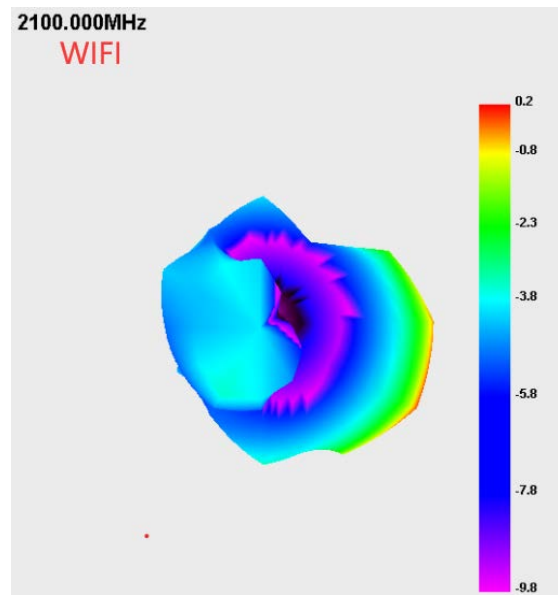
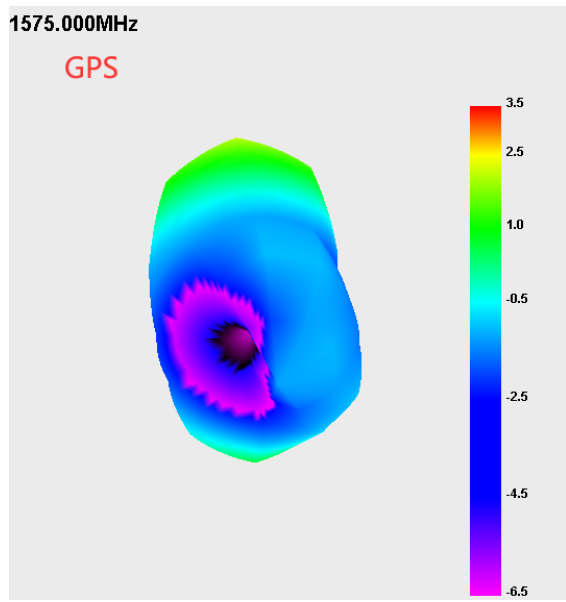
工作频段(Working frequency band):

GSM850/900/1800/1900

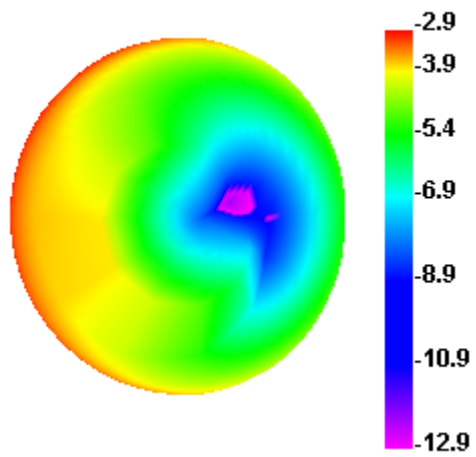
WCDMA2/4/5

B2.4.5.12.13.17.66.71.41

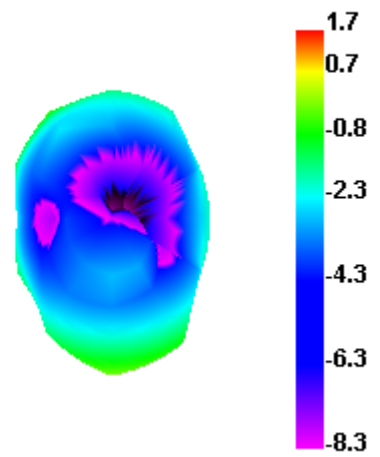
频段 Band	gain 增益(dBi)
GSM850,WCDMA-B5,LTE-B5	-3.05
GSM900	-3.96
DCS1800,	1.76
PCS1900,WCDMA-B2,LTE-B2	0.63
WCDMA-B4,LTE-B4/66	0.85
LTE-B12/17	-2.95
LTE-B13	-2.86
LTE-B71	-3.28
LTE-B41	1.06
GPS	3.55
2.4G WIFI/BT	2.69
5G WIFI	1.59



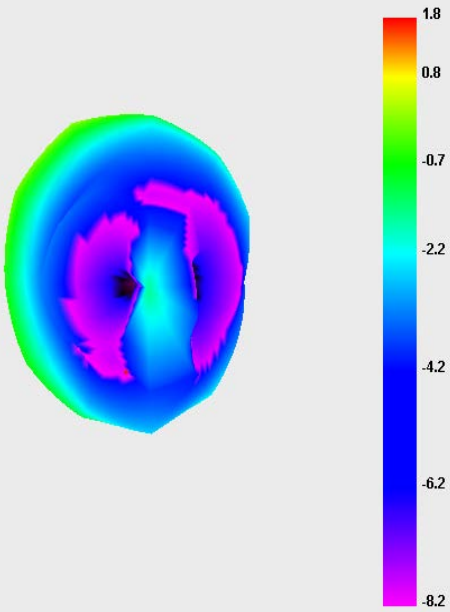
820.000MHz



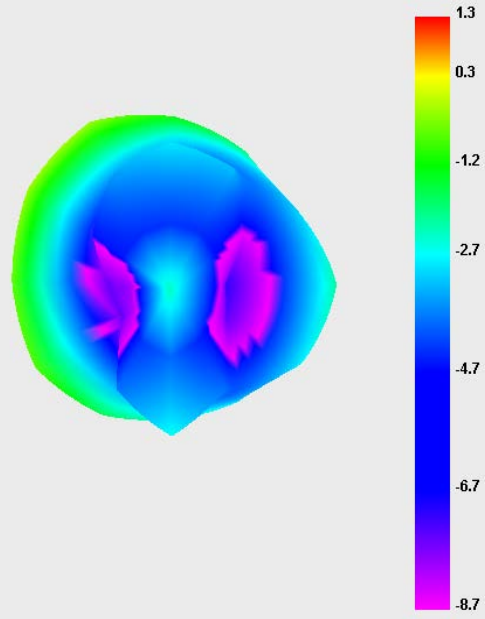
1710.000MHz



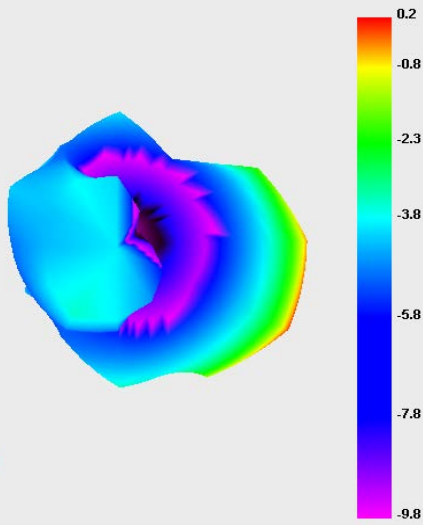
1800.000MHz



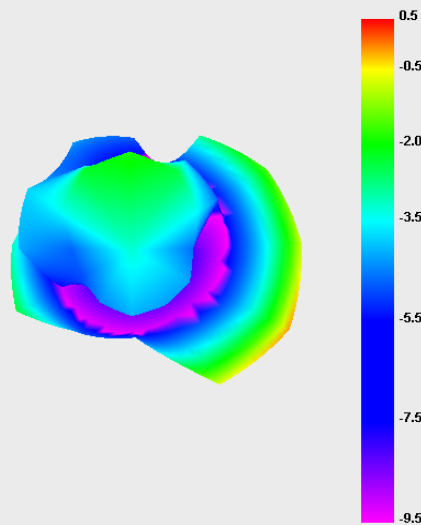
1900.000MHz

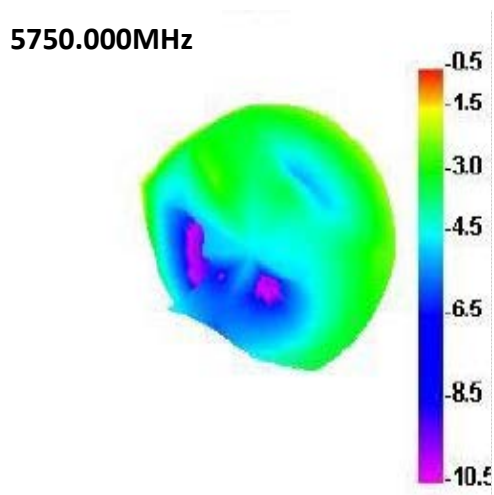
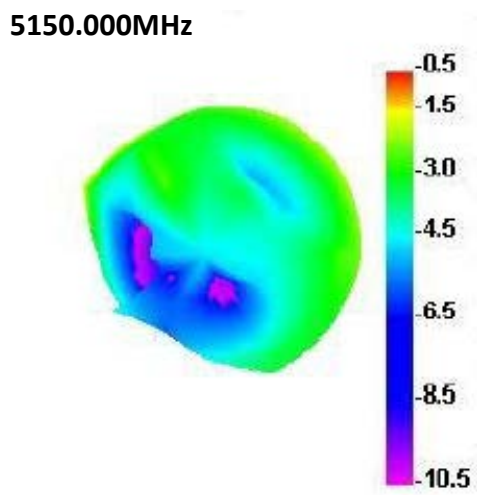
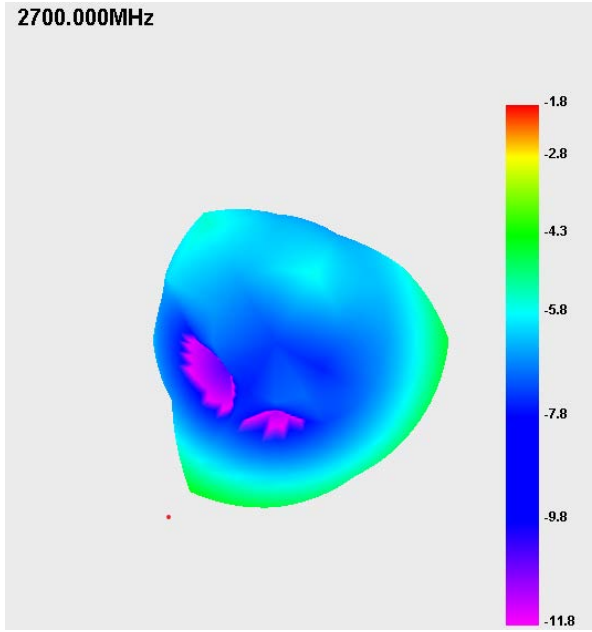
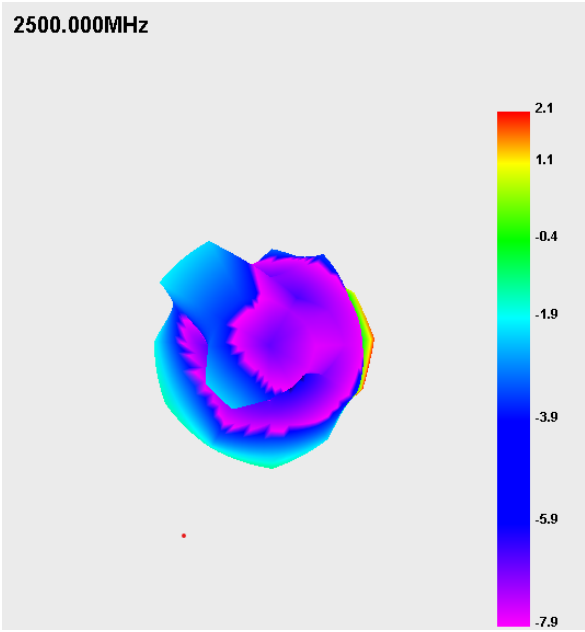


2100.000MHz



2200.000MHz





2.test result

2G	CH	TRP	TIS
GSM850	128	25.39	
	190	26.25	
	251	26.37	-101.05
EGSM900	1	24.46	
	62	23.21	
	124	22.03	-96.18
DCS1800	512	23.53	
	698	24.29	
	885	25.19	-103.27
PCS1900	512	24.37	
	661	24.68	
	810	25.16	-103.46
3G	CH	TRP	TIS
WCDMA2	9262	17.67	
	9400	17.53	
	9538	18.16	-105.03
WCDMA4	1537	16.58	
	1625	16.83	
	1738	17.16	-103.38
WCDMA5	4132	15.63	
	4183	16.28	
	4233	16.05	-101.68
4G	CH	TRP	TIS
FDD-B2	18650	18.03	
	18900	18.15	
	19150	18.62	-93.69
FDD-B4	20000	16.53	
	20175	16.99	
	20350	17.69	-94.09
FDD-B5	20450	15.49	
	20525	16.35	
	20600	17.29	-90.31
FDD-B12	23060	16.83	
	23095	17.77	
	23130	17.71	-90.73
FDD-B13	23230	16.53	-90.18
	23780	16.6	
	23790	17.02	
FDD-B17	23800	17.35	-91.39
	132022	16.59	
	132322	16.82	
FDD-B66	132622	17.7	-94.57
	133172	16.09	
	133297	17.24	
FDD-B71	133422	17.65	-90.76
	40340	16.35	
	40620	17.11	
TDD-B41	41140	16.46	-88.52

1.Test site

3Good microwave anechoic chamber: the test frequency range is 400MHz - 6GHz, the quiet zone range is 40cm circumference, and the reflectivity is less than - 90 dB.

2.test result

The maximum radiation power and maximum receiving sensitivity reflect the maximum power radiation value and the optimal receiving performance of the antenna in the entire radiation space. TRP and TIS reflect the average radiation power and average receiving sensitivity of the antenna, that is, the overall receiving performance of the antenna.

2-1.Three in one test results

Average CNR

0280000 0240000 0000 0000
0000 0000 0000 0280000

Show in single page

SVID	Fq	CNR	Elevation	Azimuth
1 L1		26.5	74.00	151.00
2 L1		0.0	68.00	58.00
3 L1		0.0	15.00	144.00
7 L1		16.8	70.00	250.00
8 L1		26.0	29.00	40.00
9 L1		0.0	9.00	206.00
14 L1		39.3	26.00	319.00
16 L1		0.0	1.00	108.00
17 L1		27.6	28.00	267.00
19 L1		20.8	6.00	250.00
21 L1		18.0	52.00	47.00
22 L1		36.3	10.00	308.00
30 L1		40.5	47.00	302.00
73 L1		40.6	18.00	332.00
79 L1		0.0	40.00	119.00
80 L1		19.4	64.00	23.00
81 L1		0.0	5.00	29.00
82 L1		25.0	50.00	13.00
83 L1		12.5	73.00	262.00
84 L1		0.0	14.00	217.00
4 L1		0.0	14.00	223.00

GPS	最大信号强度	搜星数量	平均定位时间	
	40.5	12	136S	晴天
WIFI	正常上网距离	在线视频流畅距离		
	10M	10M		