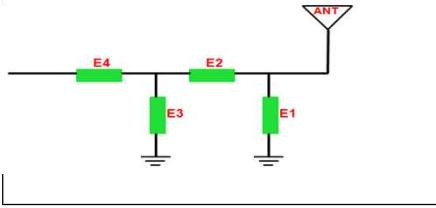




K55B2 Antenna

Matching circuits (匹配电路)



| 主路匹配 | | 开关匹配 | |
|---------|-------|---------|-------|
| Element | Value | Element | Value |
| L9020 | 1PF | C886 | 0Ω |
| R9071 | 2.7NH | R853 | 10NH |
| R9070 | 0Ω | C187 | 15NH |
| C9070 | 10NH | C188 | 18NH |

主天线主路匹配改动如右图标记。

分集和三合一天线匹配没有改动。

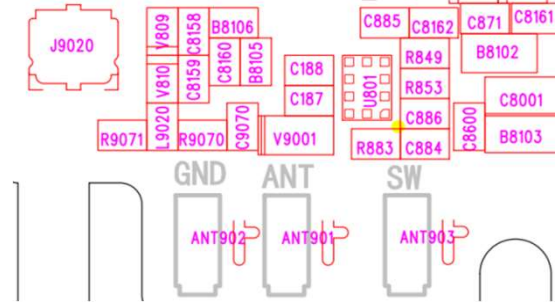
开关配置如下：

RF1路(C886) , 0Ω: GSM850/900/1800/1900+WCDMA2/4/5+FDD2/4/5/66/41

RF2路(R853) , 10NH: FDD13

RF3路(C187) , 15NH: FDD12/17

RF4路(C188) , 18NH: FDD71



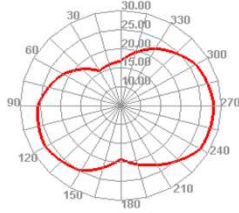
Test data (测试数据)

| 2G | CH | TRP | TIS |
|---------|-----|-------|---------|
| GSM850 | 128 | 26.35 | |
| | 190 | 27.31 | |
| | 251 | 27.41 | -102.51 |
| EGSM900 | 1 | 26.61 | |
| | 62 | 25.78 | |
| | 124 | 24.93 | -96.49 |
| DCS1800 | 512 | 25.19 | |
| | 698 | 24.41 | |
| | 885 | 24.55 | -105.43 |
| PCS1900 | 512 | 25.76 | |
| | 661 | 26.46 | |
| | 810 | 25.59 | -105.54 |

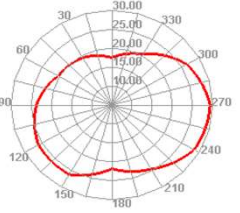
| 3G | CH | TRP | TIS |
|--------|------|-------|---------|
| WCDMA2 | 9262 | 18.28 | |
| | 9400 | 18.69 | |
| | 9538 | 18.68 | -105.62 |
| WCDMA4 | 1537 | 16.38 | |
| | 1625 | 16.69 | |
| | 1738 | 16.33 | -105.42 |
| WCDMA5 | 4132 | 16.31 | |
| | 4183 | 16.82 | |
| | 4233 | 16.66 | -101.69 |

| 4G | CH | TRP | TIS |
|---------|--------|-------|--------|
| FDD-B2 | 18650 | 18.38 | |
| | 18900 | 18.73 | |
| | 19150 | 18.52 | -95.49 |
| | 20000 | 16.25 | |
| FDD-B4 | 20175 | 17.15 | |
| | 20350 | 18.41 | -96.86 |
| | 20450 | 16.63 | |
| FDD-B5 | 20525 | 17.57 | |
| | 20600 | 17.62 | -90.06 |
| | 23060 | 16.58 | |
| FDD-B12 | 23095 | 17.58 | |
| | 23130 | 17.15 | -90.58 |
| | 23230 | 17.21 | -90.65 |
| FDD-B17 | 23780 | 16.6 | |
| | 23790 | 16.8 | |
| | 23800 | 17.89 | -90.79 |
| FDD-B66 | 132022 | 16.27 | |
| | 132322 | 17.25 | |
| | 132622 | 18.08 | -96.94 |
| FDD-B71 | 133172 | 16.19 | |
| | 133297 | 17.06 | |
| | 133422 | 17.69 | -90.45 |
| TDD-B41 | 40340 | 17.97 | |
| | 40620 | 17.56 | |
| | 41140 | 17.35 | -90.23 |

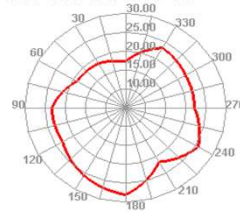
GSM850 128 TRP Phi=45



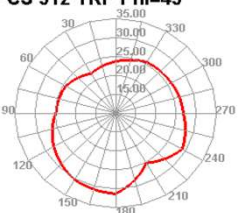
EGSM 1 TRP Phi=45



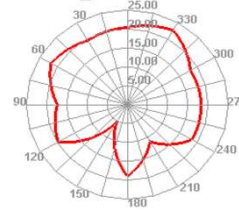
DCS 512 TRP Phi=45



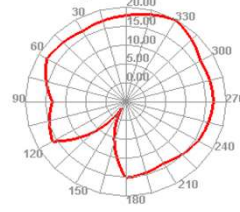
PCS 512 TRP Phi=45



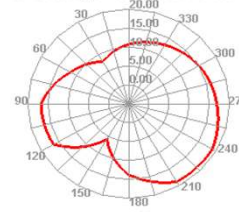
WCDMA_II 9262 TRP Phi=45



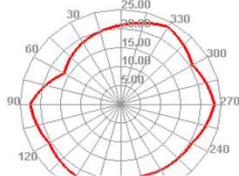
WCDMA_IV 1313 TRP Phi=45



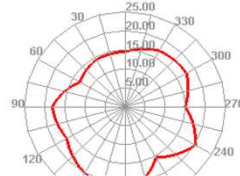
WCDMA_V 4132 TRP Phi=45



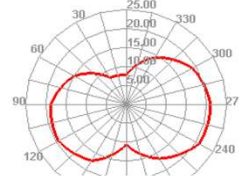
LTE2 18650 TRP Phi=45



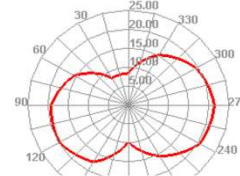
LTE4 20000 TRP Phi=45



LTE5 20450 TRP Phi=45

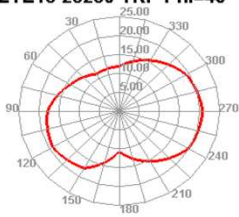


LTE12 23060 TRP Phi=45

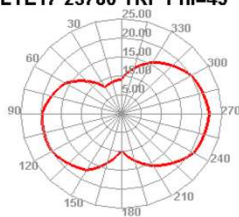




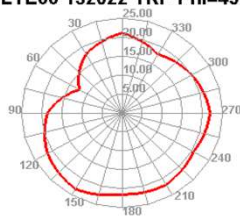
LTE13 23230 TRP Phi=45



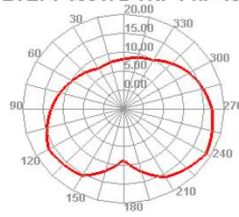
LTE17 23780 TRP Phi=45



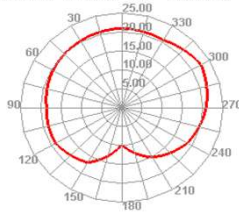
LTE66 132022 TRP Phi=45



LTE71 133172 TRP Phi=45



LTE41 40340 TRP Phi=45

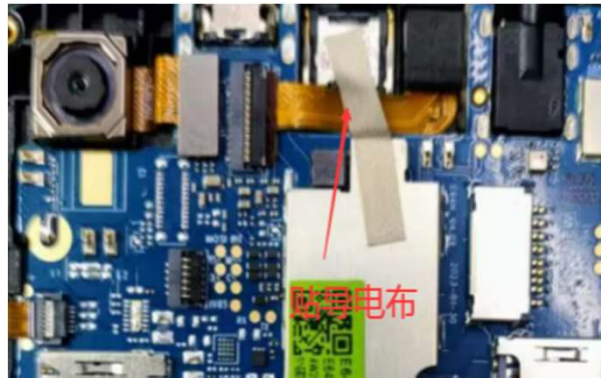
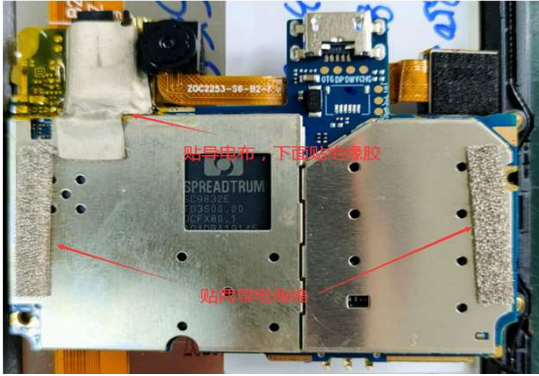


GPS/WIFI Field test (GPS/WIFI场测)



| | | | | |
|------|---------------|------|----------|----|
| GPS | 最大信号强度 | 搜星数量 | 平均定位时间 | |
| | 42 | 18 | 58S | 晴天 |
| WIFI | 正常上网距离 | | 在线视频流畅距离 | |
| | 10M | | 10M | |
| BT场测 | 连接蓝牙听歌15米无卡顿。 | | | |

Treatment measures (环境处理)





Report description (调试状态描述):

Antenna Max. Peak Gain:

EGSM900: -2.93dBi

GSM850: -2.18dBi

DCS1800: -0.13dBi

PCS1900: 0.92dBi

WCDMA-B2: 0.92dBi

WCDMA-B4: 0.53dBi

WCDMA-B5: -2.18dBi

LTE-B2: 0.92dBi

LTE-B4: 0.53dBi

LTE-B5: -2.18dBi

LTE-B12: -2.23dBi

LTE-B13: -1.98dBi

LTE-B17: -2.23dBi

LTE-B66: 0.53dBi

LTE-B71: -2.69dBi

GPS: -0.25dBi

WIFI/BT: 0.19dBi

The end