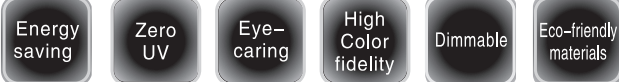


The main function

- Luminescence technology, no glare, no strobe, soft lighting eye protection
- LED with ultra-long life and minimal light decay
- Control switch, brightness color temperature adjustable, easy to operate
- 5 - color temperature dimming, more comfortable
- 5 - dimensional omni-directional lighting Angle to meet a variety of environmental requirements
- Folded structure, smaller volume
- Calendar clock display, with alarm clock function
- Clock control function
- Use digital technology, LCD backlight can be turned on/off
- Qi wireless charging function

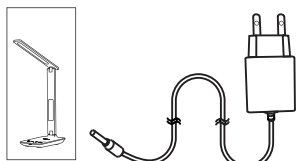


Technical parameters

Power Input:	12V
USB Charging Port:	5V2.1A
Wireless Charger:	10W
LED Power:	6W (Max)
Brightness:	500 lm
Color Temperature:	3000K-6000K
CRI	> 80Ra
Shell Material:	ABS+PS

In the accessories

Plug in the device

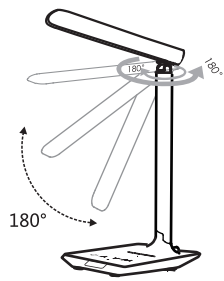


The instructions Adapter and power cord

Directions for use

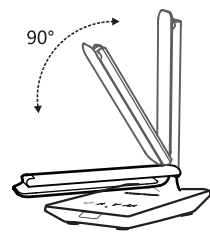


- Light can be turned on or off by touching the ON/OFF button.
- Touch the ^/v button lightly to adjust the brightness of the light up and down.
- Touch the M button lightly to adjust the color temperature of the light. There are three color temperature modes to choose from.



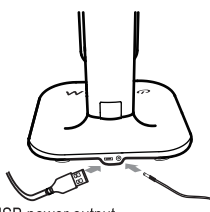
Scope of lamp holder movement:

- While adjusting the Angle of the lamp head, hold down the base at the same time.
- Lamp holder rotation range is 180° (this product has a finite position device, lamp head rotation range is 180°).



Normal range of lamp arm movement:

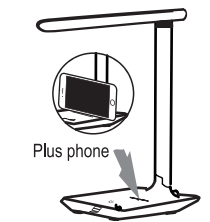
- The use range of the lamp arm's front swing is: 90°.
- While adjusting the Angle of the lamp arm, hold down the base at the same time.



- Insert the power adapter input wire into the interface (DC12V) behind the base.

- After connecting the OUTPUT of USB power supply, it can charge other devices (USB power OUTPUT 5V 2.1A).

USB power output The power input



- Plus mobile phone holder (This function cannot be used when using wireless charging)

Instructions

- power button: press the button to turn the light on or off
- brightness adjustment: touch button ^ or v lightly
- color temperature adjustment: in the lighting mode, pressing M to convert.
- LCD backlight: long press 2 seconds to turn on/off the LCD backlight.

calendar clock operation instructions :

M	S	^	v
Mode	Set	Up	Down

Date and time Settings

1. In clock mode (TIME is shown in the upper left corner) press S key to enter the settings function, and then press S key again to enter the setting of the next option, the setting order is: Hour-Minute-Year-Month-Day-Exit
2. Press v key and ^ key to set up
3. In the setting mode, press M key to exit and save, or it will automatically exit and save if no operation within one minute.
4. In clock mode, press ^ key to convert 12-hour system Weeks will be automatically adjusted as the date changes **If the week does not match the date at that time, you need to check whether the year settings are correct.**

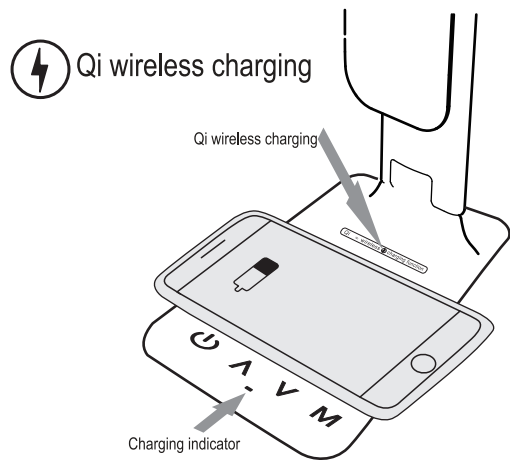
Alarm and Snooze Function Settings

1. In clock mode (TIME in the upper left corner), press M to enter alarm mode (ALARM in the upper left corner)
 2. In alarm mode, press S key to enter the settings, and then press again to enter the settings of the next option. The setting order is: Hour-Minute-Snooze-Music-Exit
 3. Press v key and ^ key to set up
 4. In the alarm mode, press v key or ^ key to turn on and off alarm bells and snooze functions, and setting order is: Alarm on - Snooze off- Alarm & Snooze off
 5. The alarm will ring for one minute. When the snooze time interval arrives, the alarm will ring twice, and the alarm will ring for one minute at a time Press S key to cancel the sound, press any key to pause
 6. Snooze interval duration range is set to 1-60 minutes (the default is 60 minutes), 8 ring tones are optional, press ^/v to set
- In clock mode, press the V key to switch Celsius and Fahrenheit When the alarm rings, the light will automatically turn on. Pressing ON/OFF key to pause the alarm. (When the LCD backlight is off, the backlight will be light at the same time.)

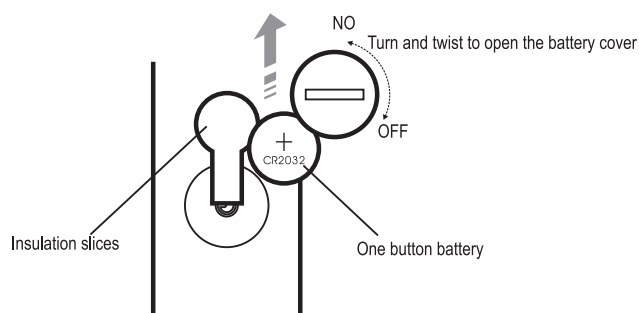
Qi wireless charging

When the lamp is switched on, Qi wireless charging can be used normally. Wireless charging or USB output charging can be selected. If wireless charging is selected, please put the mobile phone supporting wireless charging in the wireless charging area.

In order to improve the charging efficiency, it is not recommended to use wireless charging and USB charging at the same time.



The battery replacement



Note: The CR2032 battery will keep the time function working when power cable is removed.

Product service warranty card

This product from the purchase date, the normal use of the guarantee free service for one year. If the warranty period will be charged a certain part cost. If you need to replace the parts of the service, according to the company service parts overhaul price list.

In the following cases, no warranty will be granted free of charge, although during the period of the warranty.

1. Failure or damage caused by natural disaster, earthquake, rodent disaster, public hazard or not in normal use.
2. Failure or damage caused by delivery, movement and improper storage after purchase.
3. Loss products such as accessories, batteries, bulbs, etc
4. The record of guarantee information is incomplete, the date of purchase is not filled in, and the seal of the purchasing store is not sealed.
5. No warranty for special environment, such as humid, sulfur area, high salt area near the sea and corrosion-prone area on the ship.
6. Users fail to follow the instructions.
7. Products sold under special agreement.

When the products are returned to the factory for repair, they should be properly packed to avoid damage in transit.

The manufacturer shall not be responsible for any fault caused by disassembling or assembling the product by itself.

Important!

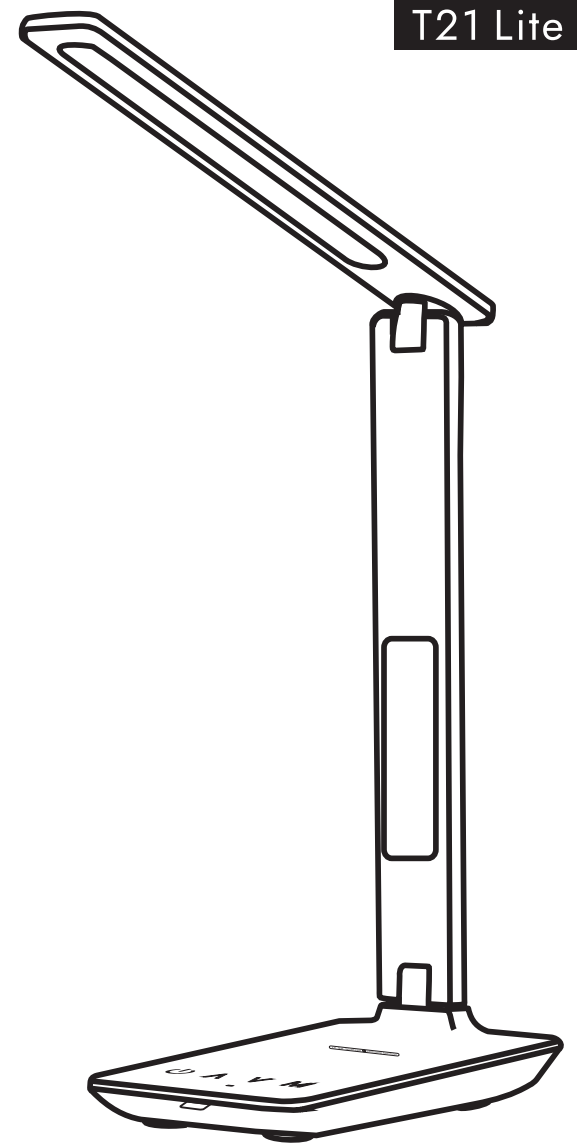
Thank you for purchasing this product.

To ensure your rights and interests, please fill in properly, thank you!!

The name	
address	
The phone	
Invoice no.	
Purchase E H E	
Product model	
dealers	⚠ Please stamp this column with the seal of the distribution store
<p>Note *please keep your warranty. The warranty period should be presented for verification</p>	

Yeslights Business Desk Lamp User Manual

T21 Lite



If you cannot find the answer in this manual, please feel free to contact us: service@yeslights.com

FCC Statement

This device complies with part 15 of the FCC rules. Operation is subject to the following two conditions: (1) this device may not cause harmful interference, and (2) this device must accept any interference received, including interference that may cause undesired operation.

Changes or modifications not expressly approved by the party responsible for compliance could void the user's authority to operate the equipment.

NOTE: This equipment has been tested and found to comply with the limits for a Class B digital device, pursuant to part 15 of the FCC Rules. These limits are designed to provide reasonable protection against harmful interference in a residential installation. This equipment generates uses and can radiate radio frequency energy and, if not installed and used in accordance with the instructions, may cause harmful interference to radio communications. However, there is no guarantee that interference will not occur in a particular installation. If this equipment does cause harmful interference to radio or television reception, which can be determined by turning the equipment off and on, the user is encouraged to try to correct the interference by one or more of the following measures:

- Reorient or relocate the receiving antenna.
- Increase the separation between the equipment and receiver.
- Connect the equipment into an outlet on a circuit different from that to which the receiver is connected.
- Consult the dealer or an experienced radio/TV technician for help.

The equipment complies with FCC radiation exposure limits set forth for an uncontrolled environment. During the operation of device a distance of 15 cm surrounding the device and 20 cm above the top surface of the device must be respected.