

# FCC TEST REPORT

Client Name : Shenzhen Feihe Electronics Co., Ltd  
Address : 3/F, Bldg 3, HongFa Innovative Park HuangMaBu  
Community, Baoan District Shenzhen, 518101 China  
Product Name : wireless charger lamp  
Date : Apr. 02, 2022



**Shenzhen Anbotek Compliance Laboratory Limited**

# Contents

1. General Information.....	4
1.1. Client Information.....	4
1.2. Description of Device (EUT).....	4
1.3. Auxiliary Equipment Used During Test.....	5
1.4. Description of Test Modes.....	5
1.5. Description Of Test Setup.....	6
1.6. Test Equipment List.....	7
1.7. Measurement Uncertainty.....	8
1.8. Description of Test Facility.....	8
2. Summary of Test Results.....	9
3. Conducted Emission Test.....	10
3.1. Test Standard and Limit.....	10
3.2. Test Setup.....	10
3.3. Test Procedure.....	10
3.4. Test Data.....	10
4. Radiation Spurious Emission.....	15
4.1. Test Standard and Limit.....	15
4.2. Test Setup.....	15
4.3. Test Procedure.....	16
4.4. Test Data.....	16
5. Antenna Requirement.....	21
5.1. Test Standard and Requirement.....	21
5.2. Antenna Connected Construction.....	21
APPENDIX I -- TEST SETUP PHOTOGRAPH.....	22
APPENDIX II -- EXTERNAL PHOTOGRAPH.....	24
APPENDIX III -- INTERNAL PHOTOGRAPH.....	29

# TEST REPORT

Applicant : Shenzhen Feihe Electronics Co., Ltd  
Manufacturer : Shenzhen Feihe Electronics Co., Ltd  
Product Name : wireless charger lamp  
Model No. : B16  
Trade Mark : N.A.  
Rating(s) : Input: DC 12V, 1.5A  
Wireless output: 10W  
**Test Standard(s) : FCC Part15 Subpart C, Paragraph 15.209**  
**Test Method(s) : ANSI C63.10: 2020**

The device described above is tested by Shenzhen Anbotek Compliance Laboratory Limited to determine the maximum emission levels emanating from the device and the severe levels of the device can endure and its performance criterion. The measurement results are contained in this test report and Shenzhen Anbotek Compliance Laboratory Limited is assumed full of responsibility for the accuracy and completeness of these measurements. Also, this report shows that the EUT (Equipment Under Test) is technically compliant with the FCC Part 15 Subpart C requirements.

This report applies to above tested sample only and shall not be reproduced in part without written approval of Shenzhen Anbotek Compliance Laboratory Limited.

Date of Receipt

Mar. 11, 2022

Date of Test

Mar. 11~21, 2022

Prepared By



(Cookie Lin)

Approved & Authorized Signer



(KingKong Jin)

# 1. General Information

## 1.1. Client Information

Applicant	:	Shenzhen Feihe Electronics Co., Ltd
Address	:	3/F, Bldg 3, HongFa Innovative Park HuangMaBu Community, Baoan District Shenzhen, 518101 China
Manufacturer	:	Shenzhen Feihe Electronics Co., Ltd
Address	:	3/F, Bldg 3, HongFa Innovative Park HuangMaBu Community, Baoan District Shenzhen, 518101 China
Factory	:	Shenzhen Feihe Electronics Co., Ltd
Address	:	3/F, Bldg 3, HongFa Innovative Park HuangMaBu Community, Baoan District Shenzhen, 518101 China

## 1.2. Description of Device (EUT)

Product Name	:	wireless charger lamp
Model No.	:	B16
Trade Mark	:	N.A.
Test Power Supply	:	AC 120V, 60Hz for adapter / AC 240V, 60Hz for adapter
Test Sample No.	:	1-2-1(Normal Sample), 1-2-2(Engineering Sample)
Product Description	Operation Frequency:	110.1-205KHz
	Modulation Type:	ASK
	Antenna Type:	Inductive loop coil Antenna
	Antenna Gain(Peak):	0 dBi (Provided by customer)
	Adapter:	MODEL: AS019-1201500U INPUT: 100-240V~ 50/60Hz 0.6A OUTPUT: 12V= 1.5A
<b>Remark:</b> 1) For a more detailed features description, please refer to the manufacturer's specifications or the User's Manual.		

**1.3. Auxiliary Equipment Used During Test**

Wireless charging load	:	Manufacturer: Shenzhen Ouju Technology Co., Ltd. M/N: CD2577 Power: 5W/7.5W/10W/15W Last Cal.: Oct. 26, 2020 Cal. Interval: 1 Year
------------------------	---	--

**1.4. Description of Test Modes**

To investigate the maximum EMI emission characteristics generates from EUT, the test system was pre-scanning tested base on the consideration of following EUT operation mode or test configuration mode which possible have effect on EMI emission level. Each of these EUT operation mode(s) or test configuration mode(s) mentioned above was evaluated respectively.

Pretest Mode	Description
Mode 1	Wireless Charging

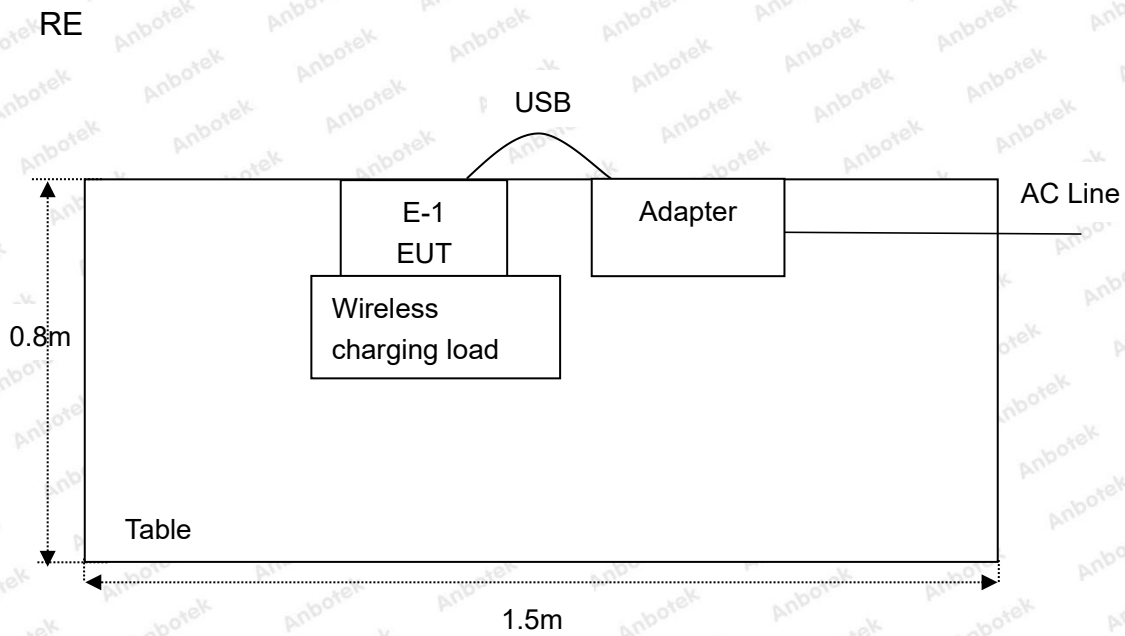
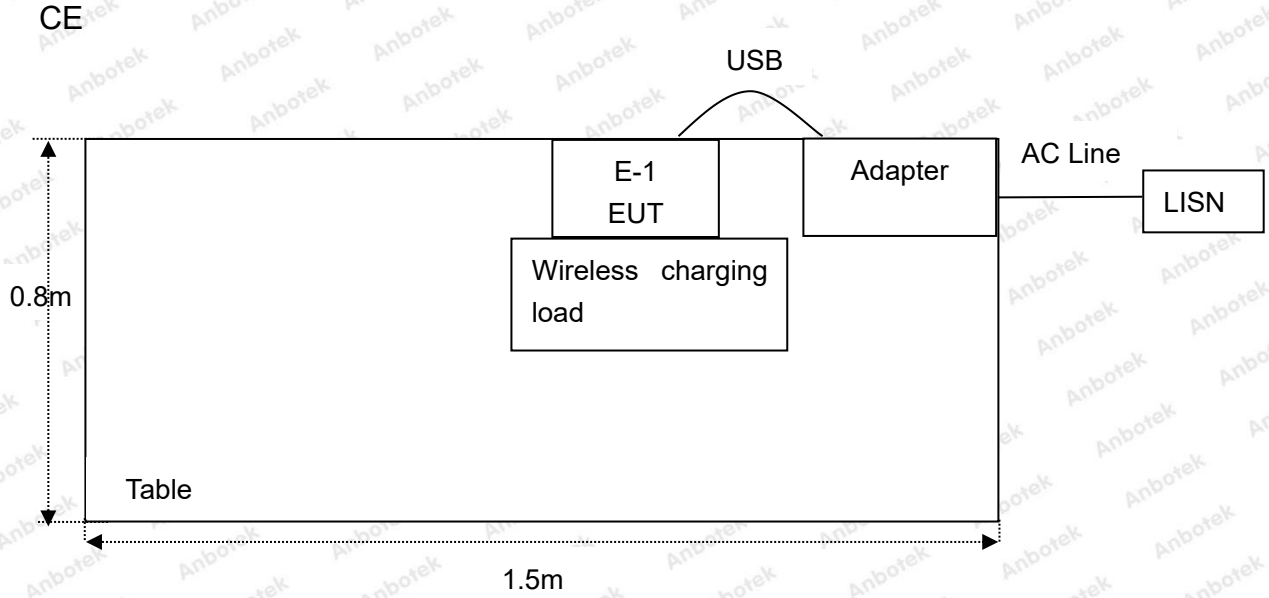
For Conducted Emission	
Final Test Mode	Description
Mode 1	Wireless Charging

For Radiated Emission	
Final Test Mode	Description
Mode 1	Wireless Charging

Note: (1)Test channel is 0.1107MHz.

(2) All the situation(full load, half load and empty load) has been tested,only the worst situation (full load 10W) was recorded in the report.

### 1.5. Description Of Test Setup



## 1.6. Test Equipment List

Item	Equipment	Manufacturer	Model No.	Serial No.	Last Cal.	Cal. Interval
1.	Three Phase V-type Artificial Power Network	CYBERTEK	EM5040DT	E215040DT001	Jul 05, 2021	1 Year
2.	EMI Test Receiver	Rohde & Schwarz	ESCI	100627	Oct. 22, 2021	1 Year
3.	EMI Test Receiver	Rohde & Schwarz	ESR26	101481	Oct. 22, 2021	1 Year
4.	RF Switching Unit	Compliance Direction	RSU-M2	38303	Oct. 22, 2021	1 Year
5.	MAX Spectrum Analysis	Agilent	N9020A	MY51170037	Oct. 22, 2021	1 Year
6.	Preamplifier	SKET Electronic	BK1G18G30 D	KD17503	Oct. 22, 2021	1 Year
7.	Double Ridged Horn Antenna	Instruments corporation	GTH-0118	351600	Oct. 22, 2021	2 Year
8.	Bilog Broadband Antenna	Schwarzbeck	VULB9163	VULB 9163-289	Oct. 22, 2021	2 Year
9.	Loop Antenna	Schwarzbeck	FMZB1519B	00053	Oct. 22, 2021	2 Year
10.	Horn Antenna	A-INFO	LB-180400-K F	J211060628	Oct. 22, 2021	2 Year
11.	Pre-amplifier	SONOMA	310N	186860	Oct. 22, 2021	1 Year
12.	EMI Test Software EZ-EMC	SHURPLE	N/A	N/A	N/A	N/A
13.	RF Test Control System	YIHENG	YH3000	2017430	Oct. 22, 2021	1 Year
14.	Power Sensor	DAER	RPR3006W	15I00041SN045	Oct. 22, 2021	1 Year
15.	Power Sensor	DAER	RPR3006W	15I00041SN046	Oct. 22, 2021	1 Year
16.	MXA Spectrum Analysis	KEYSIGHT	N9020A	MY53280032	Oct. 22, 2021	1 Year
17.	MXG RF Vector Signal Generator	Agilent	N5182A	MY48180656	Oct. 22, 2021	1 Year
18.	Signal Generator	Agilent	E4421B	MY41000743	Oct. 22, 2021	1 Year
19.	DC Power Supply	IVYTECH	IV3605	1804D360510	Oct. 22, 2021	1 Year
20.	Constant Temperature Humidity Chamber	ZHONGJIAN	ZJ-KHWS80 B	N/A	Oct. 22, 2021	1 Year

**1.7. Measurement Uncertainty**

Radiation Uncertainty	:	Ur = 3.9 dB (Horizontal)
	:	Ur = 3.8 dB (Vertical)
Conduction Uncertainty	:	Uc = 3.4 dB

**1.8. Description of Test Facility**

The test facility is recognized, certified, or accredited by the following organizations:

**FCC-Registration No.: 184111**

Shenzhen Anbotek Compliance Laboratory Limited, EMC Laboratory has been registered and fully described in a report filed with the (FCC) Federal Communications Commission. The acceptance letter from the FCC is maintained in our files. Registration No. 184111.

**ISED-Registration No.: 8058A**

Shenzhen Anbotek Compliance Laboratory Limited, EMC Laboratory has been registered and fully described in a report filed with the (ISED) Innovation, Science and Economic Development Canada. The acceptance letter from the ISED is maintained in our files. Registration 8058A.

**Test Location**

Shenzhen Anbotek Compliance Laboratory Limited.

1/F, Building D, Sogood Science and Technology Park, Sanwei community, Hangcheng Street, Bao'an District, Shenzhen, Guangdong, China.518102



## 2. Summary of Test Results

Standard Section	Test Item	Result
FCC Part 15, Paragraph 15.207	Conducted Emission Test	PASS
FCC Part 15, Paragraph 15.209(a)(f)	Spurious Emission	PASS
Part 15.203	Antenna Requirement	PASS

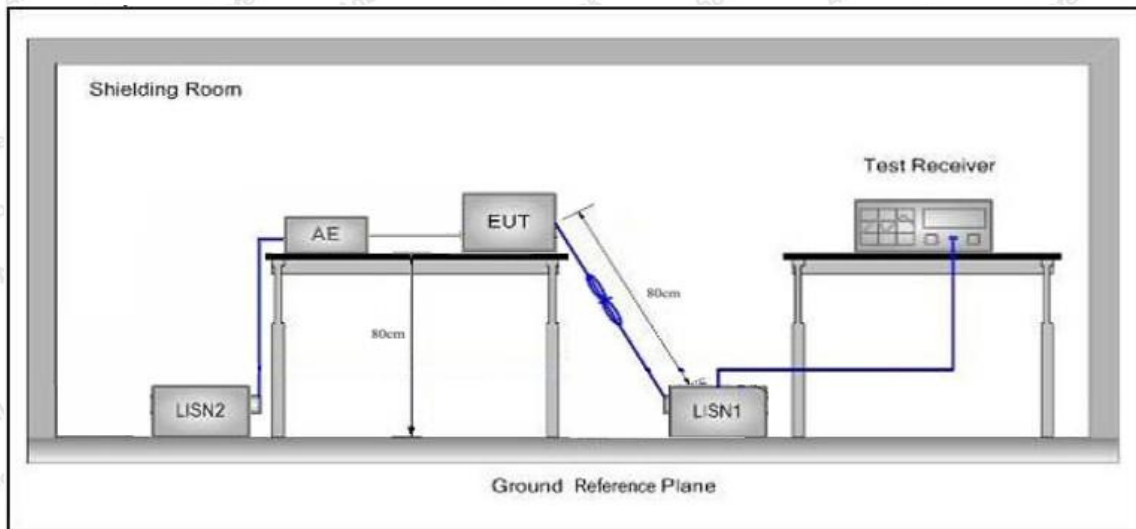
## 3. Conducted Emission Test

### 3.1. Test Standard and Limit

Test Standard	FCC Part15 Section 15.207		
Test Limit	Frequency	Maximum RF Line Voltage (dBuV)	
		Quasi-peak Level	Average Level
	150kHz~500kHz	66 ~ 56 *	56 ~ 46 *
	500kHz~5MHz	56	46
	5MHz~30MHz	60	50

**Remark:** (1) \*Decreasing linearly with logarithm of the frequency.  
 (2) The lower limit shall apply at the transition frequency.

### 3.2. Test Setup



### 3.3. Test Procedure

The EUT system is connected to the power mains through a line impedance stabilization network (L.I.S.N.). This provides a 50ohm coupling impedance for the EUT system. Please refer the block diagram of the test setup and photographs. Both sides of AC line are checked to find out the maximum conducted emission. In order to find the maximum emission levels, the relative positions of equipment and all of the interface cables shall be changed according to FCC ANSI C63.10-2020 on Conducted Emission Measurement.

The bandwidth of test receiver (ESCI) set at 9kHz.

The frequency range from 150kHz to 30MHz is checked.

### 3.4. Test Data

Please to see the following pages

#### Shenzhen Anbotek Compliance Laboratory Limited

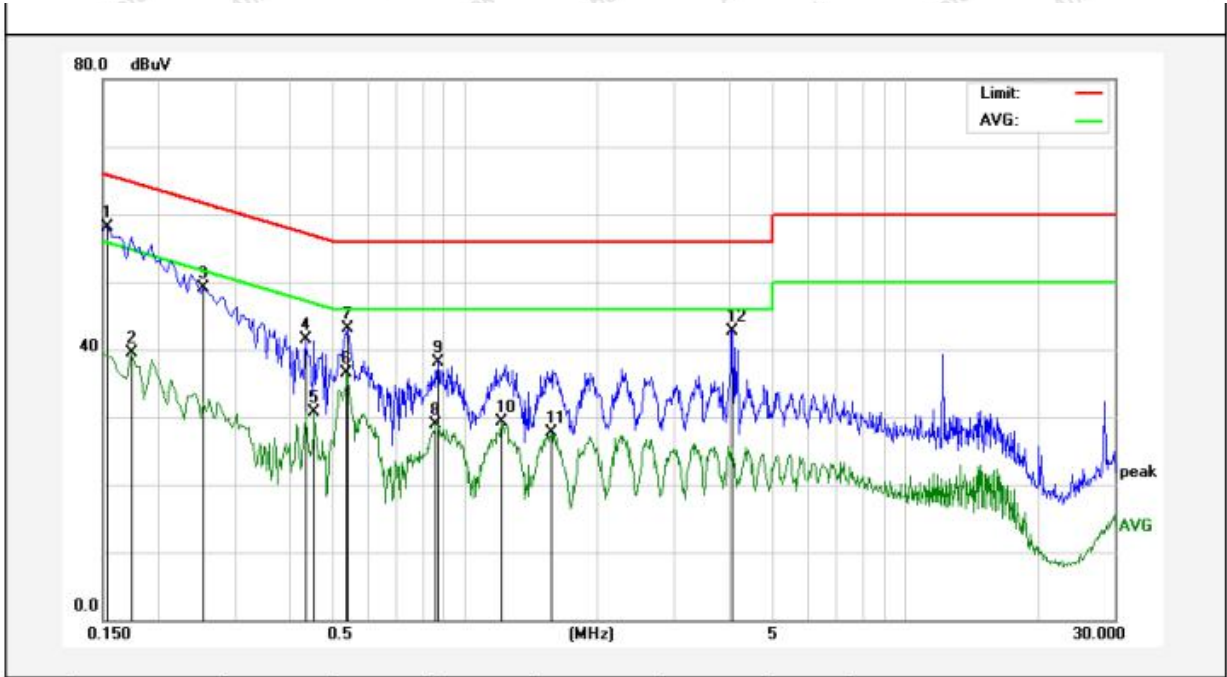
Address: 1/F., Building D, Sogood Science and Technology Park, Sanwei Community, Hangcheng Street, Bao'an District, Shenzhen, Guangdong, China.  
 Tel:(86) 755-26066440 Fax: (86) 755-26014772 Email: service@anbotek.com

Code:AB-RF-05-a

Hotline  
 400-003-0500  
 www.anbotek.com

### Conducted Emission Test Data

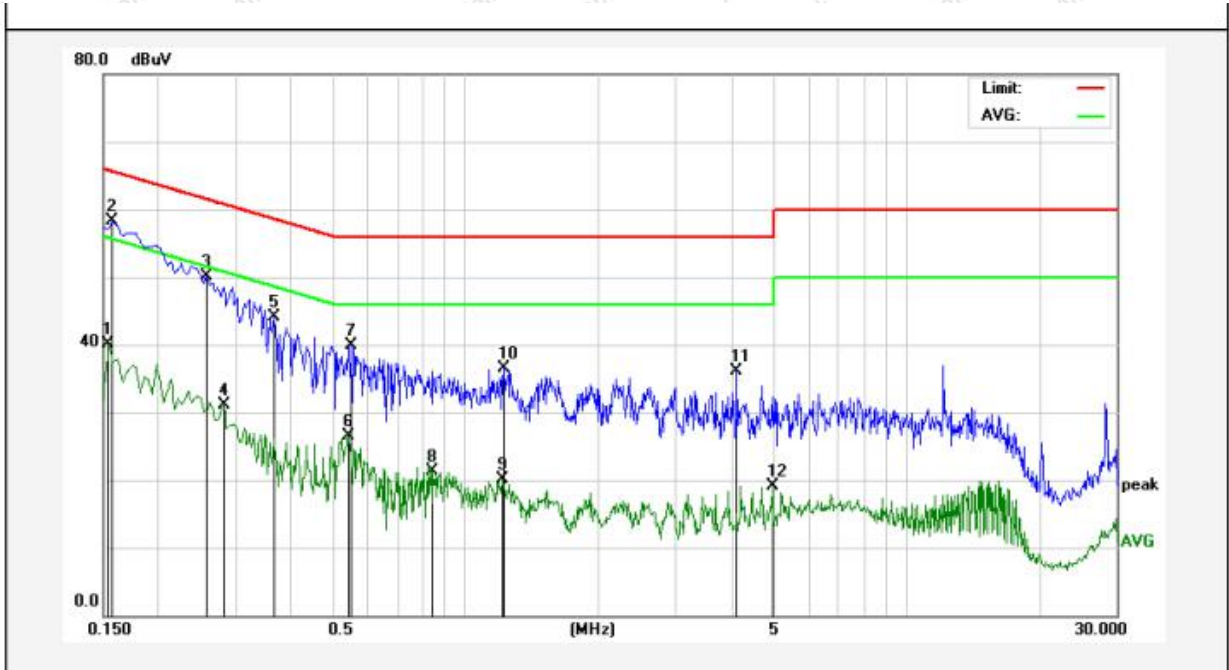
Test Site: 1# Shielded Room  
 Operating Condition: Mode 1  
 Test Specification: AC 240V, 60Hz for adapter  
 Comment: Live Line  
 Tem.: 23.1°C Hum.: 49%



No.	Freq. (MHz)	Reading (dBuV)	Factor (dB)	Result (dBuV)	Limit (dBuV)	Over Limit (dB)	Detector	Remark
1	0.1539	58.07	0.12	58.19	65.78	-7.59	QP	
2	0.1740	39.48	0.12	39.60	54.76	-15.16	AVG	
3	0.2540	48.97	0.13	49.10	61.62	-12.52	QP	
4	0.4340	41.47	0.12	41.59	57.18	-15.59	QP	
5	0.4540	30.57	0.13	30.70	46.80	-16.10	AVG	
6	0.5380	36.40	0.15	36.55	46.00	-9.45	AVG	
7	0.5420	42.87	0.15	43.02	56.00	-12.98	QP	
8	0.8580	28.78	0.15	28.93	46.00	-17.07	AVG	
9	0.8700	37.94	0.15	38.09	56.00	-17.91	QP	
10	1.2100	29.07	0.14	29.21	46.00	-16.79	AVG	
11	1.5700	27.54	0.13	27.67	46.00	-18.33	AVG	
12	4.0700	42.54	0.11	42.65	56.00	-13.35	QP	

### Conducted Emission Test Data

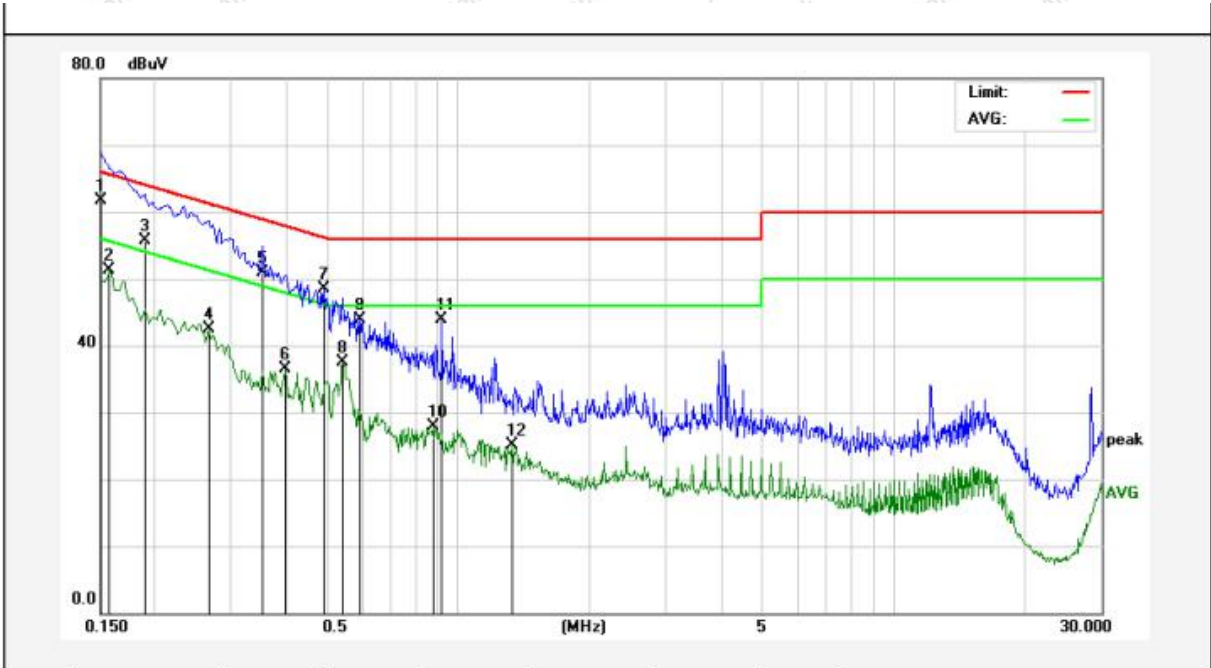
Test Site: 1# Shielded Room  
 Operating Condition: Mode 1  
 Test Specification: AC 240V, 60Hz for adapter  
 Comment: Neutral Line  
 Tem.: 23.1°C Hum.: 49%



No.	Freq. (MHz)	Reading (dBuV)	Factor (dB)	Result (dBuV)	Limit (dBuV)	Over Limit (dB)	Detector	Remark
1	0.1539	39.92	0.12	40.04	55.78	-15.74	AVG	
2	0.1580	58.19	0.12	58.31	65.56	-7.25	QP	
3	0.2580	49.93	0.13	50.06	61.49	-11.43	QP	
4	0.2819	30.95	0.13	31.08	50.76	-19.68	AVG	
5	0.3660	44.06	0.12	44.18	58.59	-14.41	QP	
6	0.5420	26.36	0.15	26.51	46.00	-19.49	AVG	
7	0.5500	39.70	0.15	39.85	56.00	-16.15	QP	
8	0.8420	21.20	0.15	21.35	46.00	-24.65	AVG	
9	1.2140	19.89	0.14	20.03	46.00	-25.97	AVG	
10	1.2220	36.46	0.14	36.60	56.00	-19.40	QP	
11	4.1180	35.95	0.11	36.06	56.00	-19.94	QP	
12	4.9660	19.01	0.11	19.12	46.00	-26.88	AVG	

### Conducted Emission Test Data

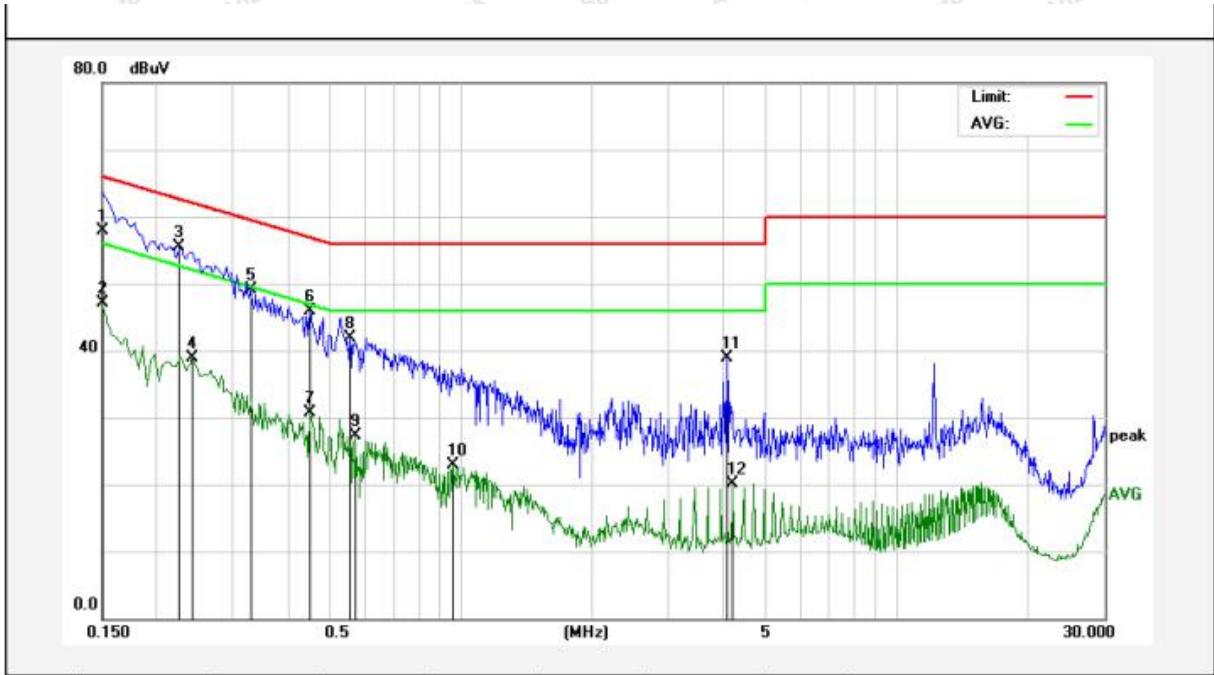
Test Site: 1# Shielded Room  
 Operating Condition: Mode 1  
 Test Specification: AC 120V, 60Hz for adapter  
 Comment: Live Line  
 Tem.: 23.1°C Hum.: 49%



No.	Freq. (MHz)	Reading (dBuV)	Factor (dB)	Result (dBuV)	Limit (dBuV)	Over Limit (dB)	Detector	Remark
1	0.1500	61.64	0.11	61.75	65.99	-4.24	QP	
2	0.1580	51.22	0.12	51.34	55.56	-4.22	AVG	
3	0.1900	55.63	0.12	55.75	64.03	-8.28	QP	
4	0.2660	42.45	0.13	42.58	51.24	-8.66	AVG	
5	0.3540	50.82	0.12	50.94	58.87	-7.93	QP	
6	0.3980	36.44	0.11	36.55	47.89	-11.34	AVG	
7	0.4900	48.36	0.15	48.51	56.17	-7.66	QP	
8	0.5420	37.41	0.15	37.56	46.00	-8.44	AVG	
9	0.5940	43.84	0.15	43.99	56.00	-12.01	QP	
10	0.8780	27.80	0.15	27.95	46.00	-18.05	AVG	
11	0.9180	43.80	0.15	43.95	56.00	-12.05	QP	
12	1.3300	24.91	0.14	25.05	46.00	-20.95	AVG	

### Conducted Emission Test Data

Test Site: 1# Shielded Room  
 Operating Condition: Mode 1  
 Test Specification: AC 120V, 60Hz for adapter  
 Comment: Neutral Line  
 Tem.: 23.1°C Hum.: 49%



No.	Freq. (MHz)	Reading (dBuV)	Factor (dB)	Result (dBuV)	Limit (dBuV)	Over Limit (dB)	Detector	Remark
1	0.1500	57.73	0.11	57.84	65.99	-8.15	QP	
2	0.1500	47.06	0.11	47.17	55.99	-8.82	AVG	
3	0.2260	55.38	0.12	55.50	62.59	-7.09	QP	
4	0.2420	38.71	0.12	38.83	52.02	-13.19	AVG	
5	0.3300	49.08	0.12	49.20	59.45	-10.25	QP	
6	0.4500	45.78	0.13	45.91	56.87	-10.96	QP	
7	0.4500	30.58	0.13	30.71	46.87	-16.16	AVG	
8	0.5580	41.82	0.15	41.97	56.00	-14.03	QP	
9	0.5740	27.06	0.15	27.21	46.00	-18.79	AVG	
10	0.9620	22.71	0.15	22.86	46.00	-23.14	AVG	
11	4.0860	38.70	0.11	38.81	56.00	-17.19	QP	
12	4.2020	20.02	0.11	20.13	46.00	-25.87	AVG	

## 4. Radiation Spurious Emission

### 4.1. Test Standard and Limit

Test Standard	FCC Part15 C Section 15.209 and 15.205				
Test Limit	Frequency (MHz)	Field strength (microvolt/meter)	Limit (dBuV/m)	Remark	Measurement distance (m)
	0.009MHz~0.490MHz	2400/F(kHz)	-	-	300
	0.490MHz-1.705MHz	24000/F(kHz)	-	-	30
	1.705MHz-30MHz	30	-	-	30
	30MHz~88MHz	100	40.0	Quasi-peak	3
	88MHz~216MHz	150	43.5	Quasi-peak	3
	216MHz~960MHz	200	46.0	Quasi-peak	3
	960MHz~1000MHz	500	54.0	Quasi-peak	3
	Above 1000MHz	500	54.0	Average	3
-		74.0	Peak	3	

**Remark:**

- (1)The lower limit shall apply at the transition frequency.
- (2) 15.35(b), Unless otherwise specified, the limit on peak radio frequency emissions is 20dB above the maximum permitted average emission limit applicable to the equipment under test. This peak limit applies to the total peak emission level radiated by the device.

### 4.2. Test Setup

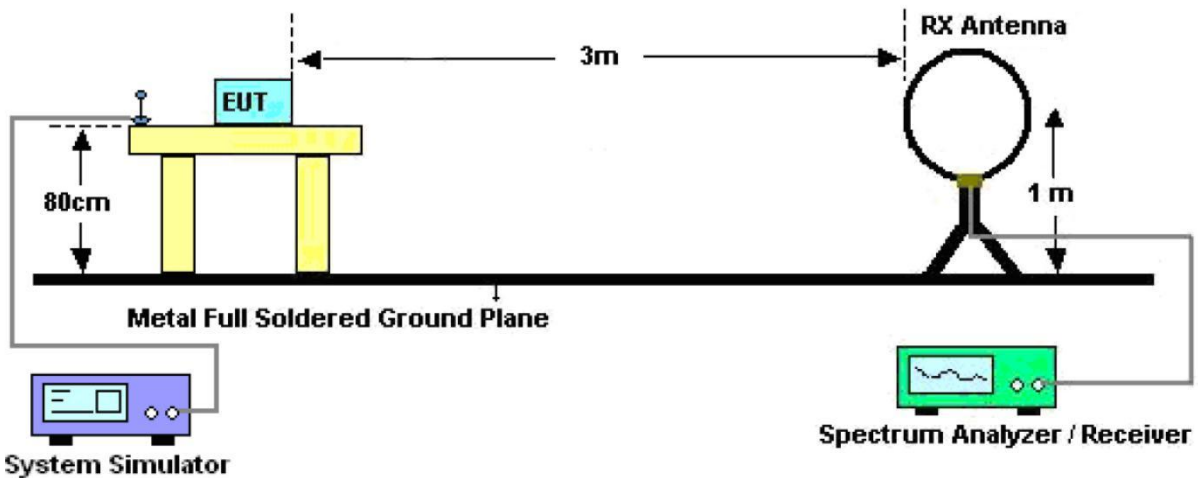


Figure 1. Below 30MHz

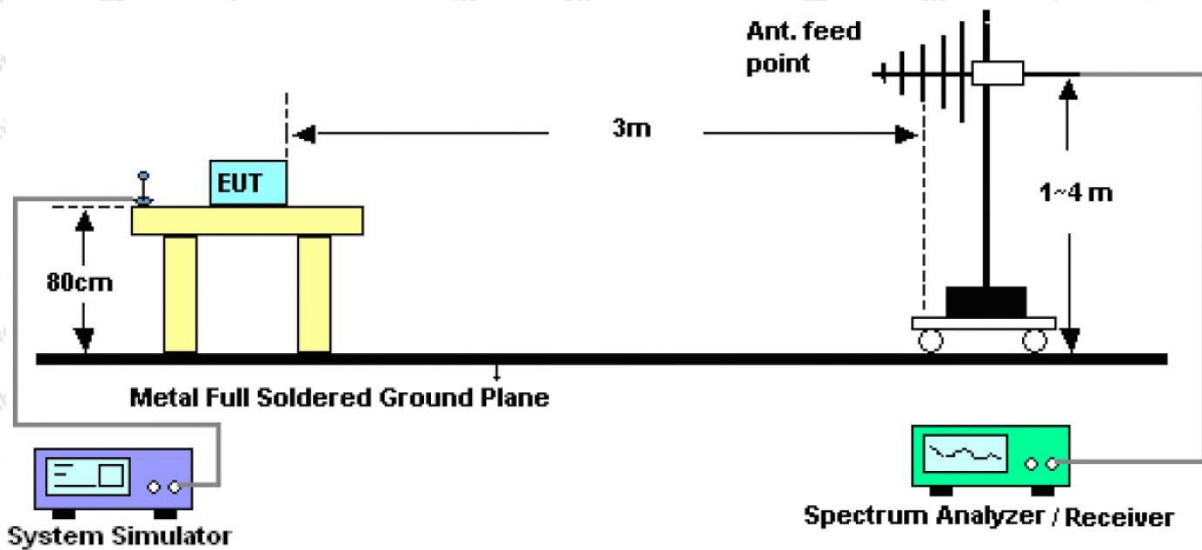


Figure 2. 30MHz to 1GHz

### 4.3. Test Procedure

For below 1GHz: The EUT is placed on a turntable, which is 0.8m above the ground plane.

The turn table can rotate 360 degrees to determine the position of the maximum emission level. The EUT is set 3 meters away from the receiving antenna which is mounted on a antenna tower. The antenna can be moved up and down from 1 to 4 meters to find out the maximum emission level. Rotated the EUT through three orthogonal axes to determine the maximum emissions, both horizontal and vertical polarization of the antenna are set on test. The EUT is tested in 9\*6\*6 Chamber. The device is evaluated in xyz orientation.

For 9kHz to 150kHz, Set the spectrum analyzer as:

RBW = 200Hz, VBW = 1kHz, Detector= Quasi-Peak, Trace mode= Max hold, Sweep- auto couple.

For 150kHz to 30MHz, Set the spectrum analyzer as:

RBW = 9kHz, VBW = 30kHz, Detector= Quasi-Peak, Trace mode= Max hold, Sweep- auto couple.

For 30MHz to 1000MHz, Set the spectrum analyzer as:

RBW = 100kHz, VBW = 300kHz, Detector= Quasi-Peak, Trace mode= Max hold, Sweep- auto couple.

### 4.4. Test Data

**PASS**

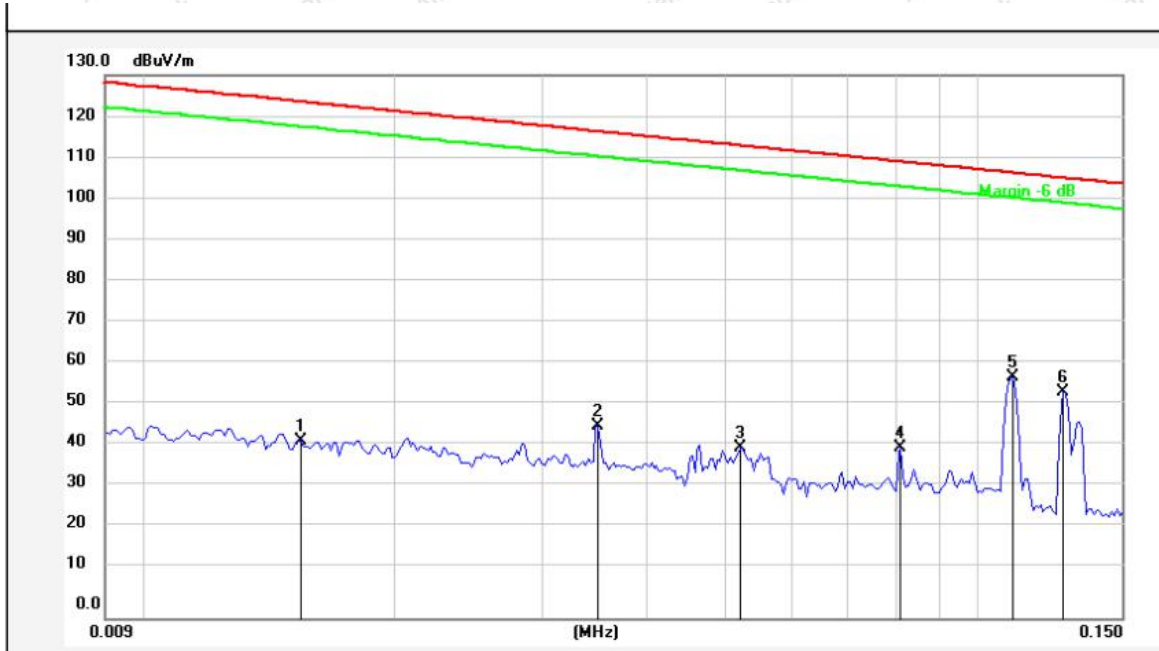
Note: The data is in TX mode, and this is the worst mode.



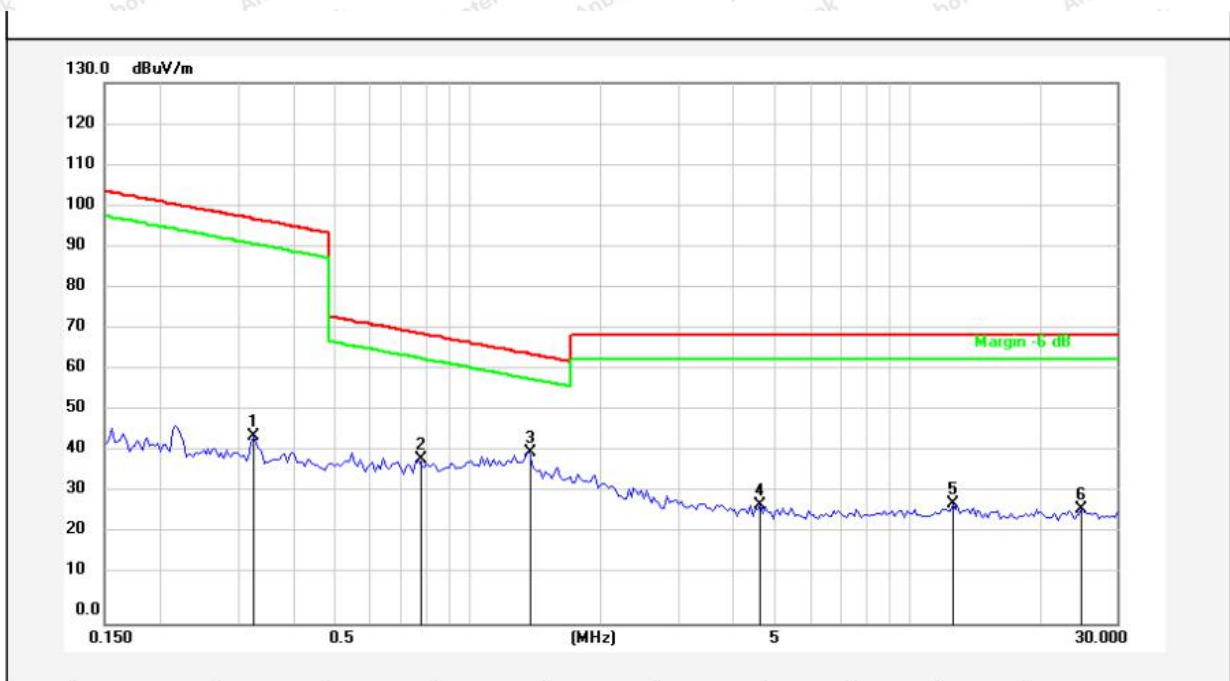
**Test Results**

(Between 9KHz – 30MHz)

**Standard:** FCC PART15 C\_3m      **Power Source:** AC 120V, 60Hz for adapter  
**Test item:** Radiation Test      **Temp.(C)/Hum.(%RH):** 23.3°C/52%RH  
**Test Mode:** Mode 1      **Distance:** 3m



No.	Freq. (MHz)	Reading (dBuV)	Factor ( )	Result (dBuV/m)	Limit (dBuV/m)	Over Limit (dB)	Detector	Height (cm)	degree (deg)	Remark
1	0.0154	22.22	20.29	42.51	123.67	-81.16	QP			
2	0.0350	25.49	20.49	45.98	116.58	-70.60	QP			
3	0.0522	20.37	20.39	40.76	113.13	-72.37	QP			
4	0.0810	20.33	20.36	40.69	109.34	-68.65	QP			
5	0.1107	37.38	20.28	57.66	106.64	-48.98	QP			
6	0.1275	33.70	20.34	54.04	105.42	-51.38	QP			

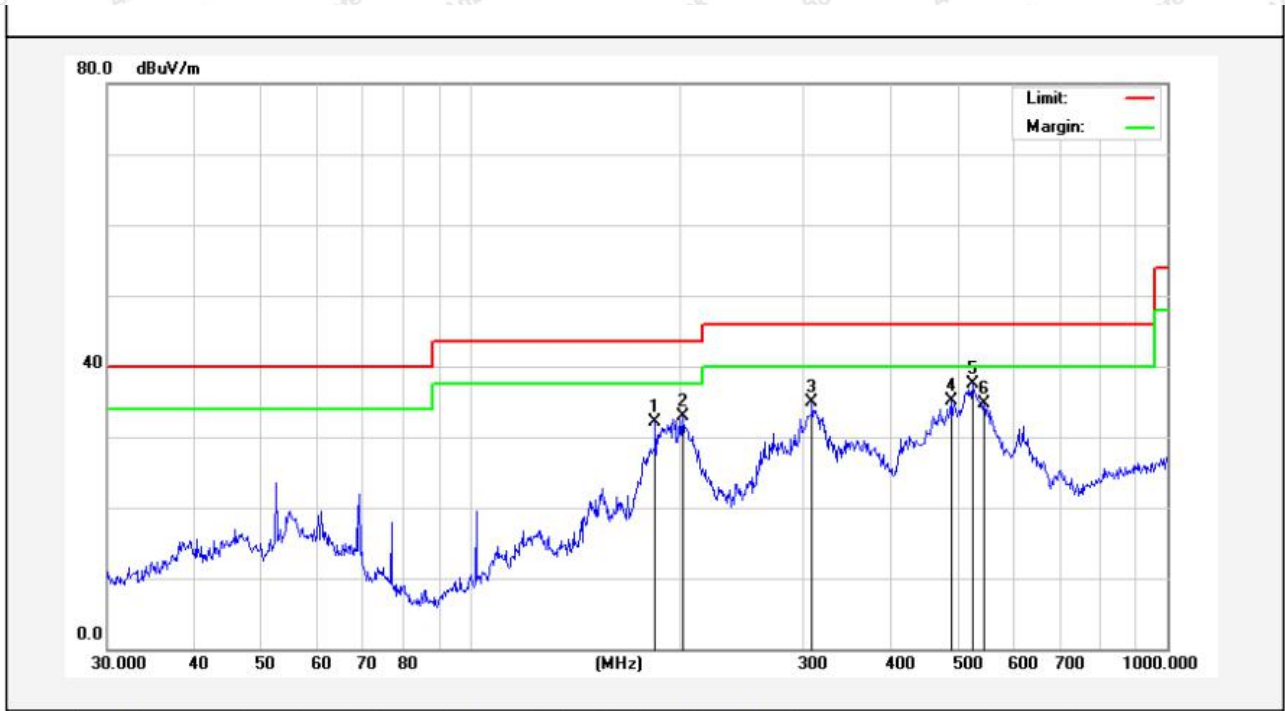


No.	Freq. (MHz)	Reading (dBuV)	Factor ( )	Result (dBuV/m)	Limit (dBuV/m)	Over Limit (dB)	Detector	Height (cm)	degree (deg)	Remark
1	0.3276	24.79	20.29	45.08	97.28	-52.20	QP			
2	0.7752	19.24	20.25	39.49	69.83	-30.34	QP			
3	1.3702	20.72	20.26	40.98	64.89	-23.91	QP			
4	4.6345	8.03	20.41	28.44	69.50	-41.06	QP			
5	12.6823	8.25	20.53	28.78	69.50	-40.72	QP			
6	24.9221	6.72	20.67	27.39	69.50	-42.11	QP			

**Remark:** According to FCC PART 15.209 (d), the emission limits for the frequency bands 9–90 kHz, 110–490 kHz and above 1000 MHz, Radiated emission limits in these three bands are based on measurements employing an average detector.

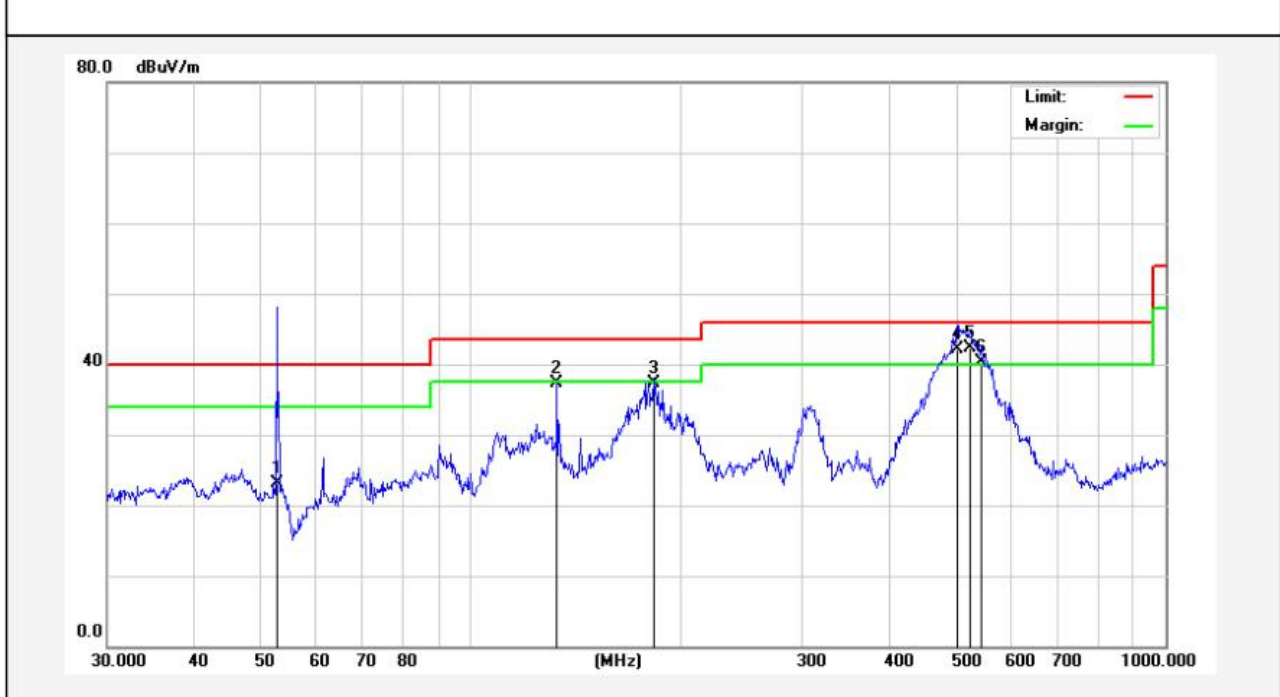
(Between 30MHz –1000 MHz)

<b>Standard:</b>	<b>FCC PART15 C _3m</b>	<b>Polarization:</b>	<b>Horizontal</b>
<b>Test item:</b>	<b>Radiation Test</b>	<b>Power Source:</b>	<b>AC 120V, 60Hz for adapter</b>
<b>Test Mode:</b>	<b>Mode 1</b>	<b>Temp.(C)/Hum.(%RH):</b>	<b>23.2°C/47%RH</b>
<b>Distance:</b>	<b>3m</b>		



No.	Freq. (MHz)	Reading (dBuV)	Factor (dB/m)	Result (dBuV/m)	Limit (dBuV/m)	Over Limit (dB)	Detector	Height (cm)	degree (deg)	Remark
1	183.8440	55.22	-23.02	32.20	43.50	-11.30	QP			
2	201.3930	55.29	-22.31	32.98	43.50	-10.52	QP			
3	308.9126	51.91	-16.96	34.95	46.00	-11.05	QP			
4	489.0269	49.32	-14.13	35.19	46.00	-10.81	QP			
5	524.5541	50.21	-12.79	37.42	46.00	-8.58	QP			
6	545.1826	46.66	-11.96	34.70	46.00	-11.30	QP			

**Standard:** FCC PART15 C\_3m      **Polarization:** Vertical  
**Test item:** Radiation Test      **Power Source:** AC 120V, 60Hz for adapter  
**Test Mode:** Mode 1      **Temp.(C)/Hum.(%RH):** 23.2°C/47%RH  
**Distance:** 3m



No.	Freq. (MHz)	Reading (dBuV)	Factor (dB/m)	Result (dBuV/m)	Limit (dBuV/m)	Over Limit (dB)	Detector	Height (cm)	degree (deg)	Remark
1	52.6753	39.87	-16.76	23.11	40.00	-16.89	QP			
2	133.1511	58.97	-21.69	37.28	43.50	-6.22	QP			
3	183.2005	57.69	-20.45	37.24	43.50	-6.26	QP			
4	501.5590	54.24	-12.21	42.03	46.00	-3.97	QP			
5	522.7180	54.24	-12.02	42.22	46.00	-3.78	QP			
6	543.2742	52.15	-11.82	40.33	46.00	-5.67	QP			

## 5. Antenna Requirement

### 5.1. Test Standard and Requirement

Test Standard	FCC Part15 Section 15.203
Requirement	An intentional radiator shall be designed to ensure that no antenna other than that furnished by the responsible party shall be used with the device. The use of a permanently attached antenna or of an antenna that uses a unique coupling to the intentional radiator, the manufacturer may design the unit so that a broken antenna can be replaced by the user, but the use of a standard antenna jack or electrical connector is prohibited.

### 5.2. Antenna Connected Construction

The antenna is a Inductive loop coil Antenna which permanently attached, and the best case gain of the antenna is 0 dBi. It complies with the standard requirement.

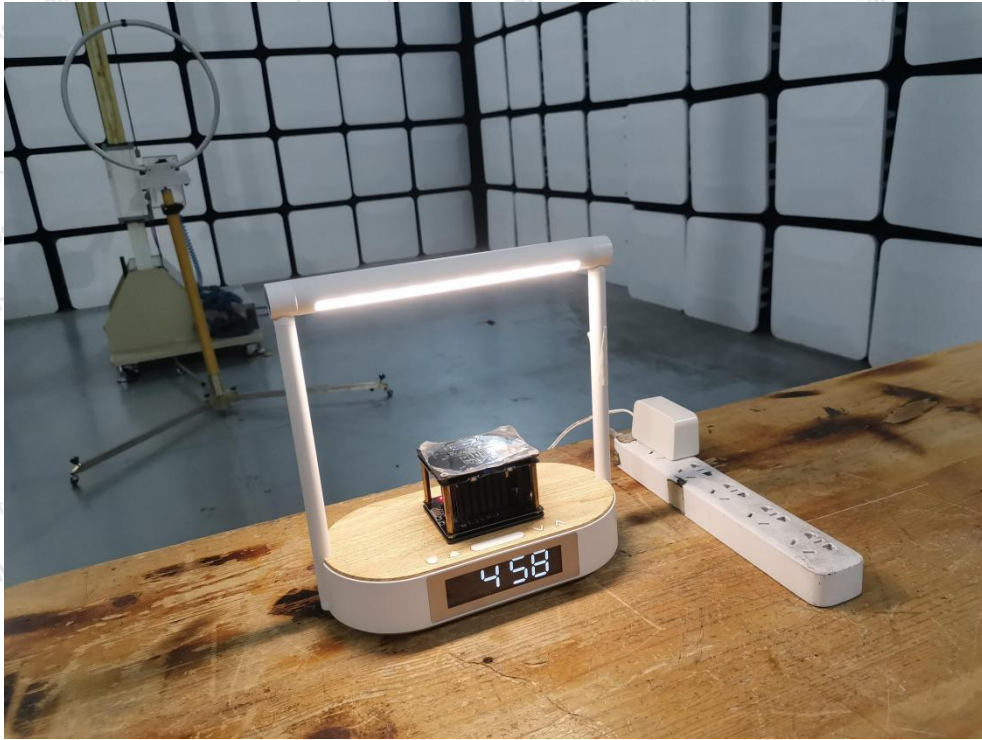
## APPENDIX I -- TEST SETUP PHOTOGRAPH

Photo of Conducted Emission Measurement



Photo of Radiation Emission Test

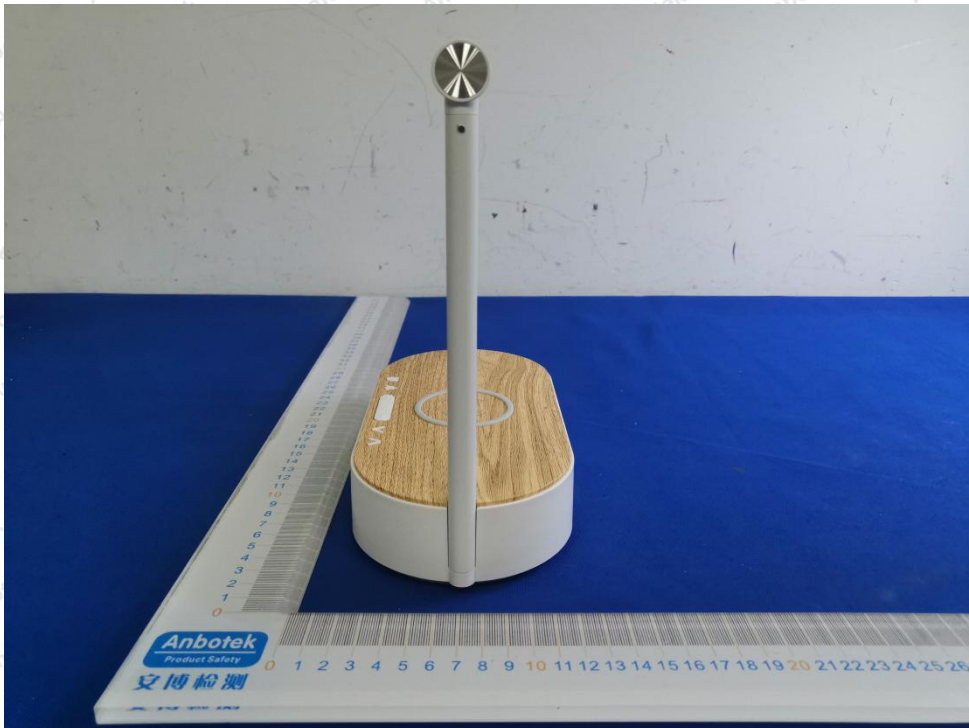




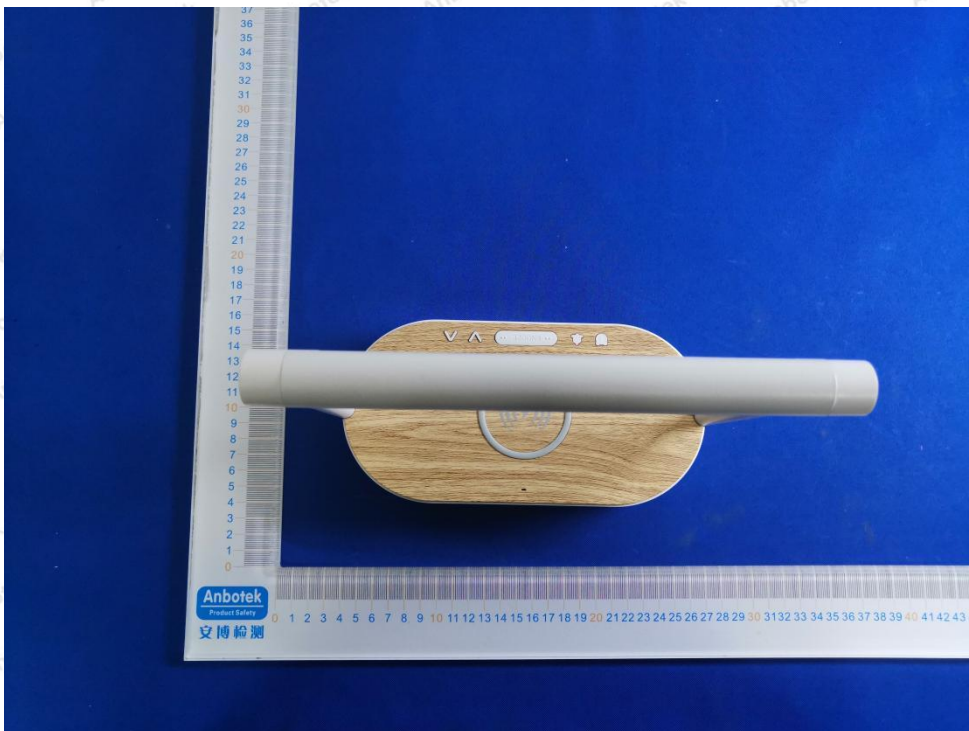
## APPENDIX II -- EXTERNAL PHOTOGRAPH





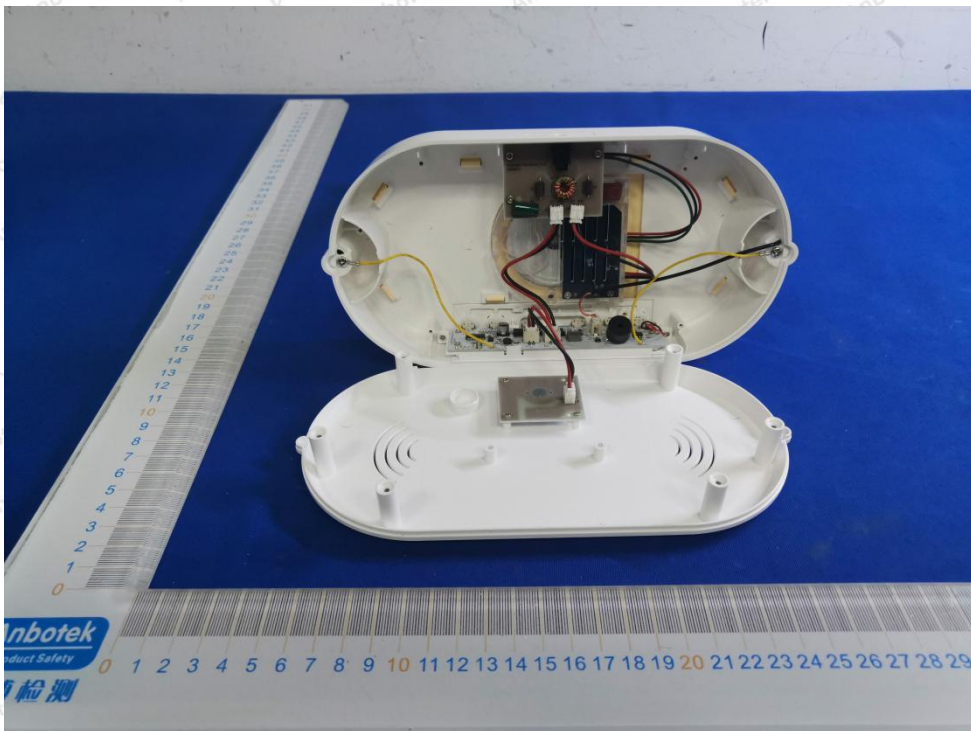


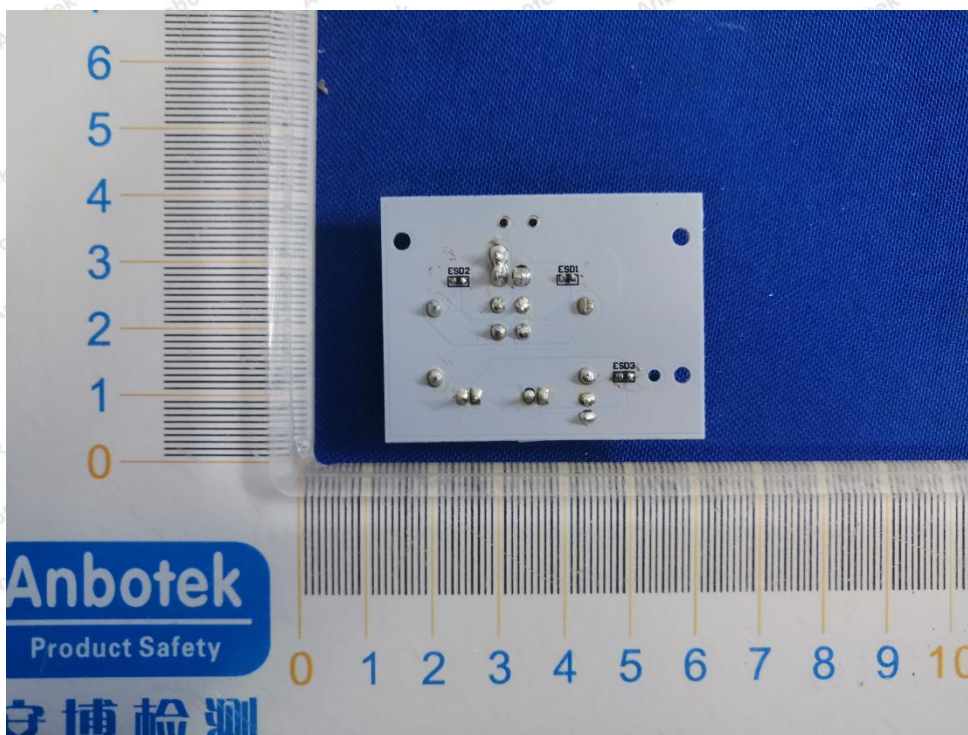
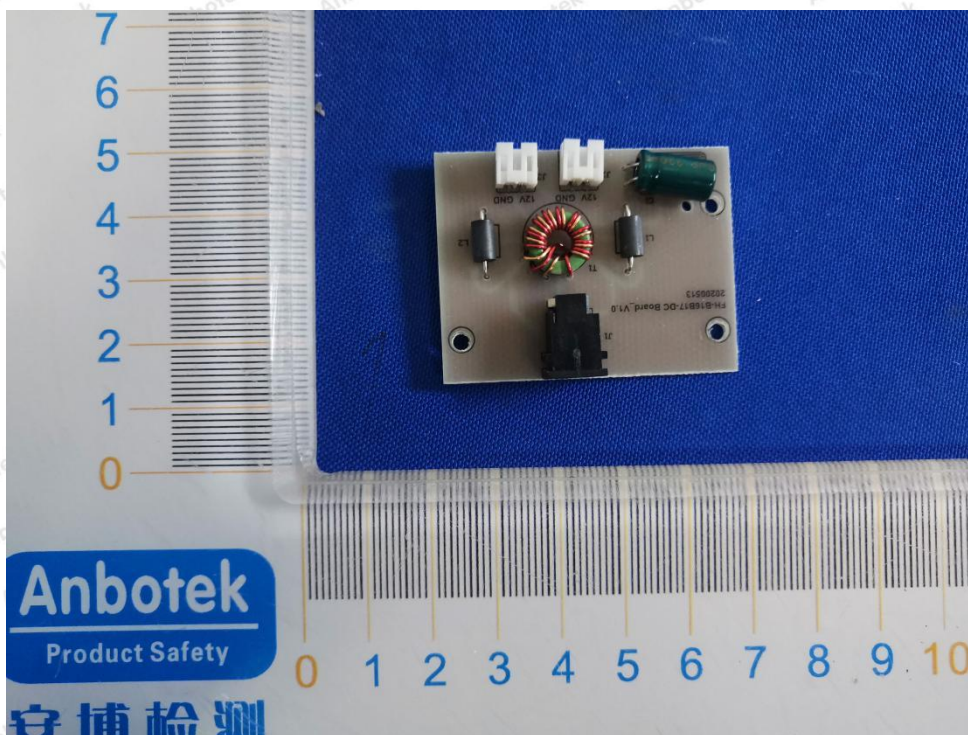


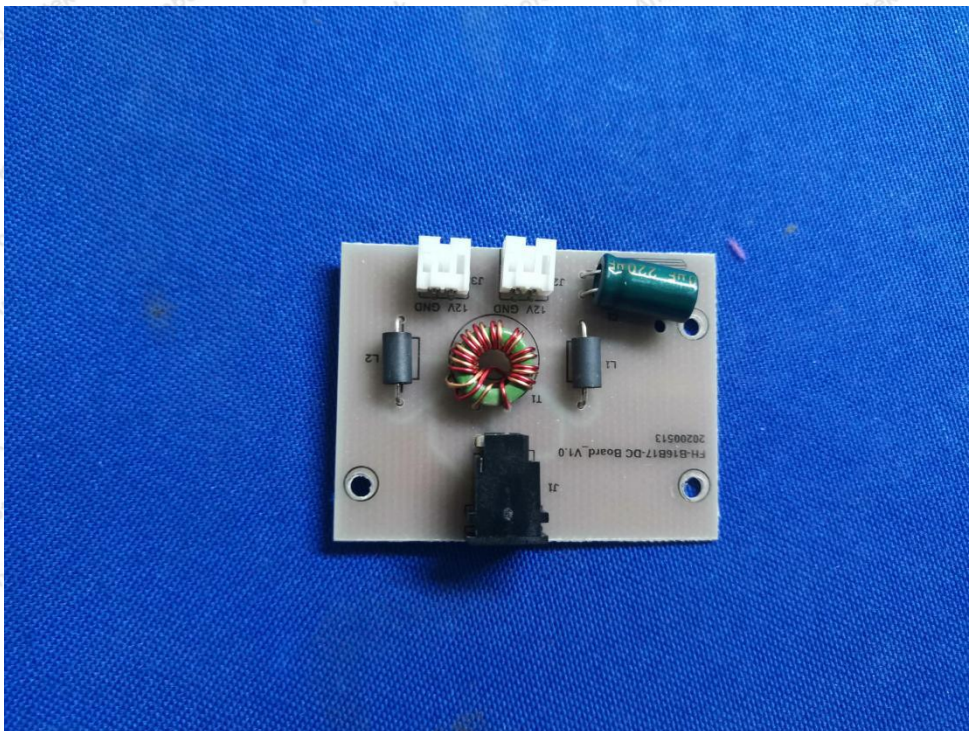
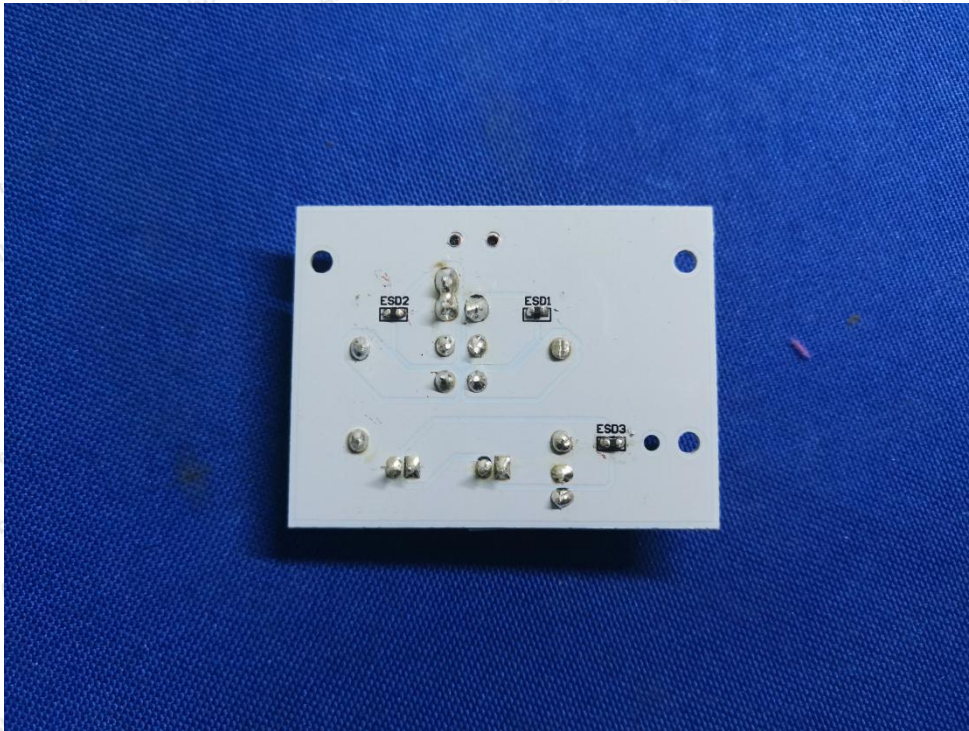


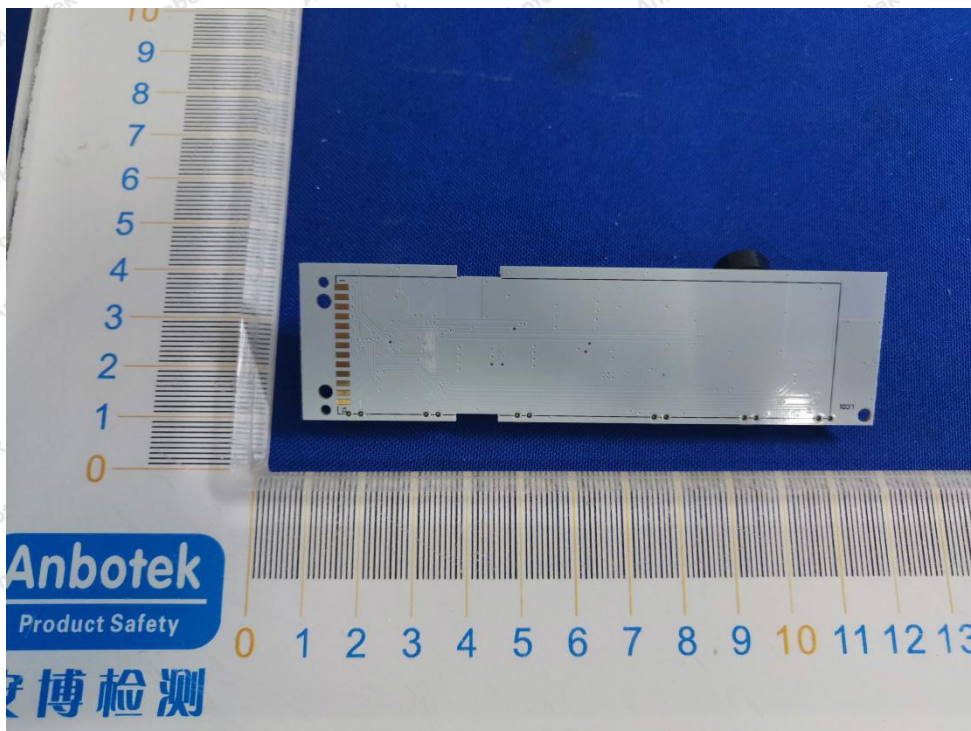


## APPENDIX III -- INTERNAL PHOTOGRAPH

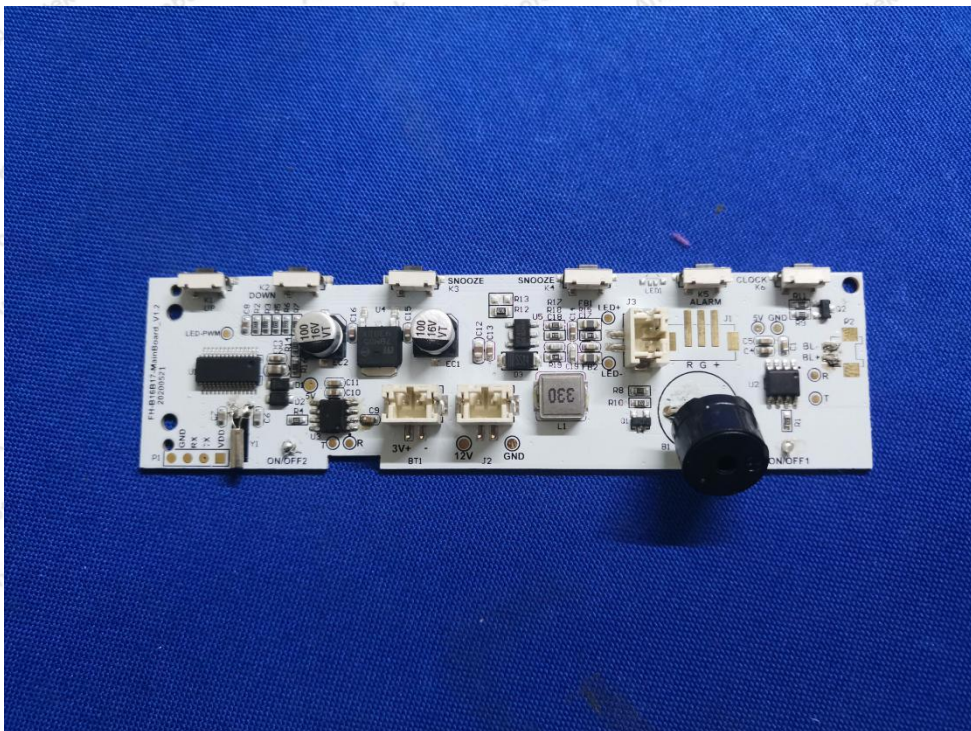
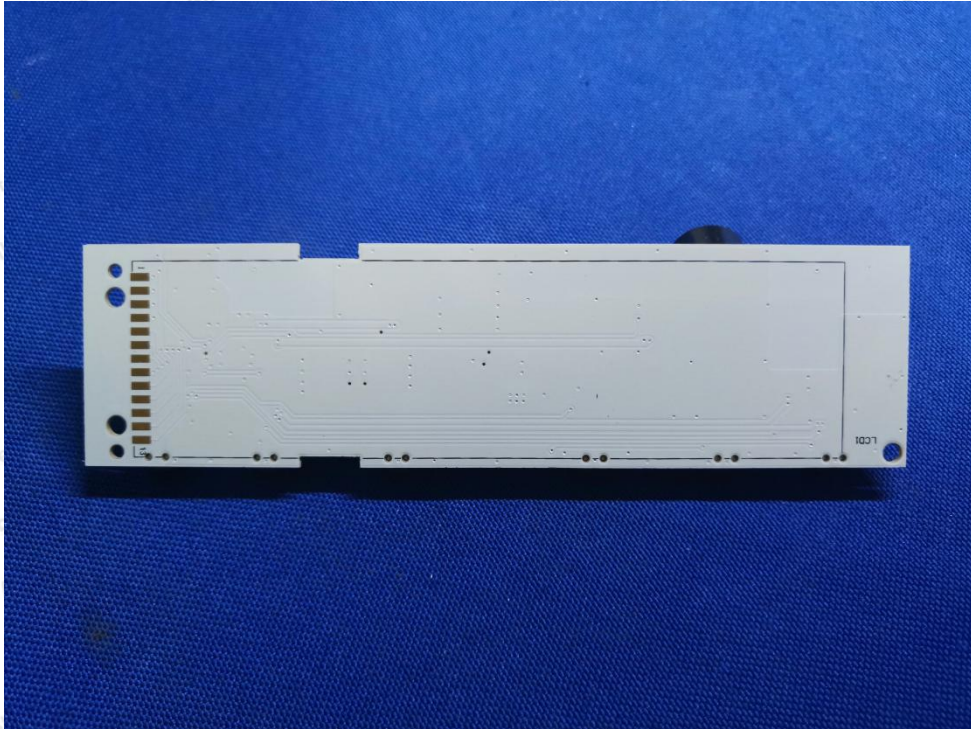


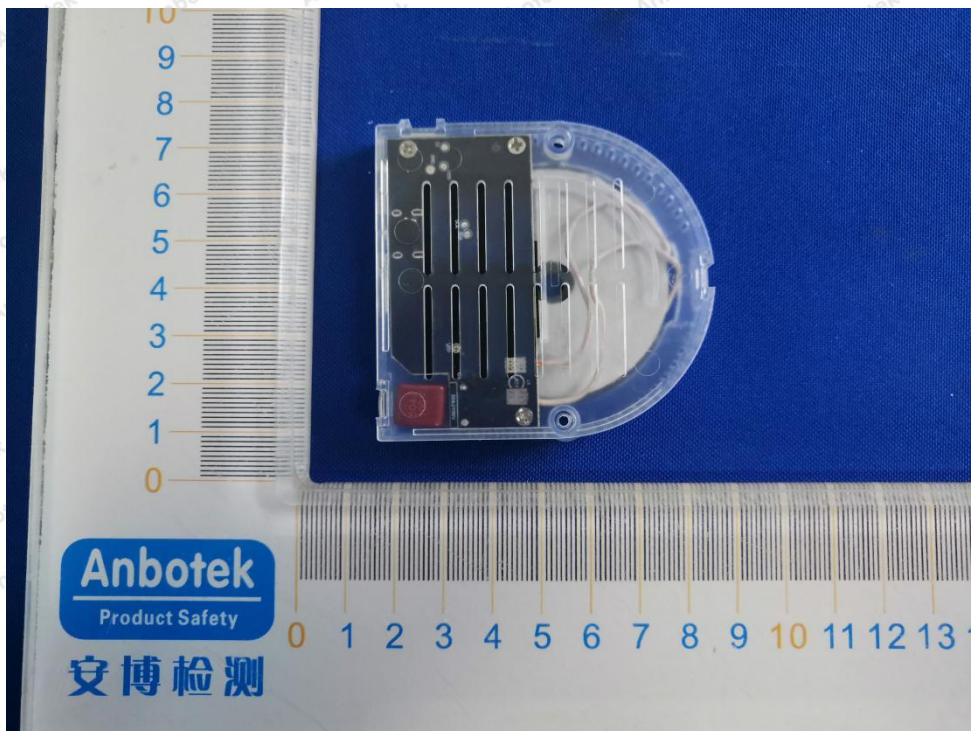
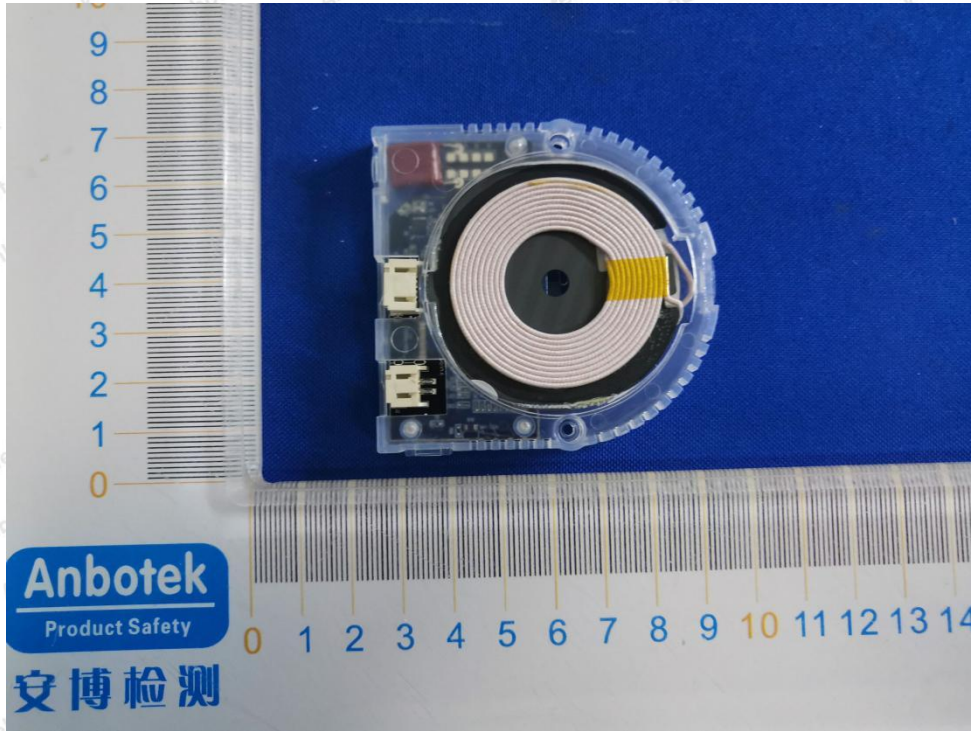






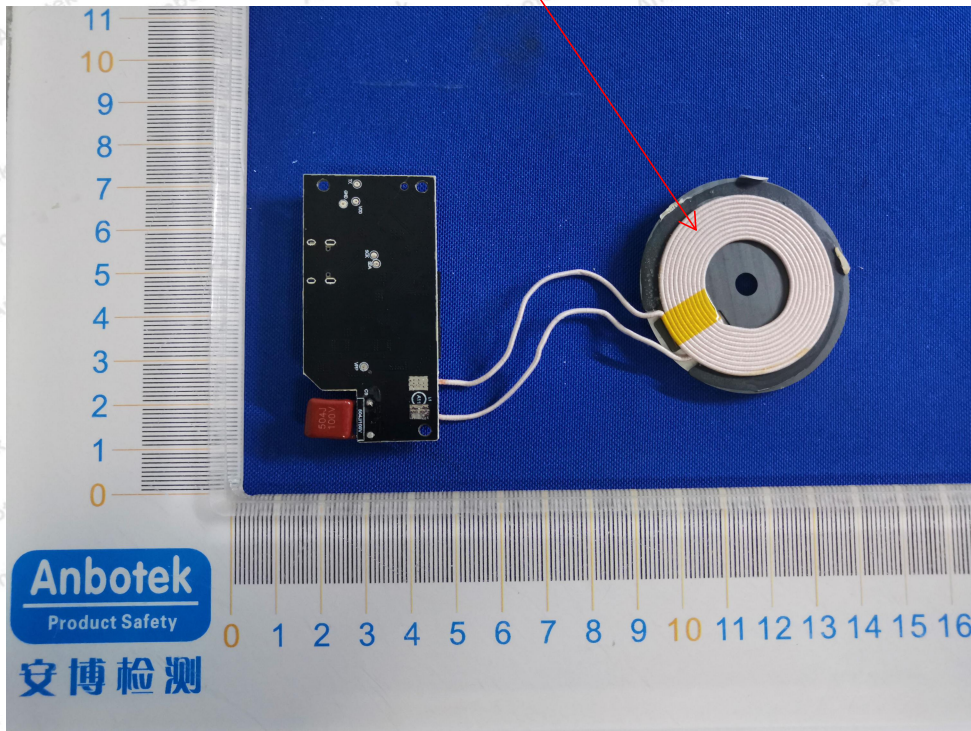


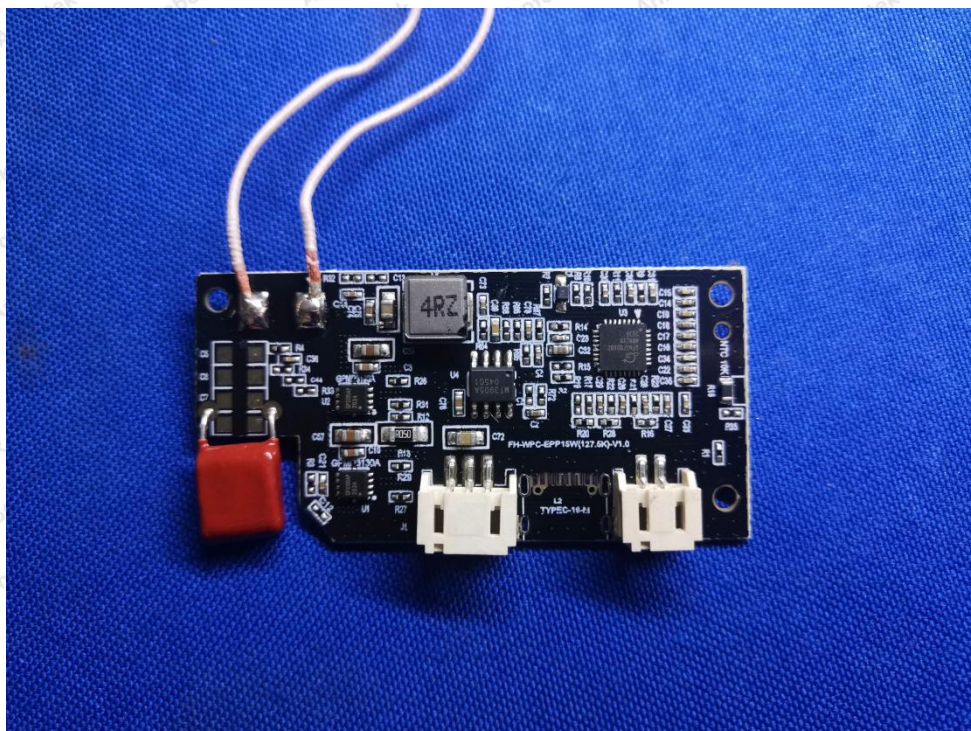
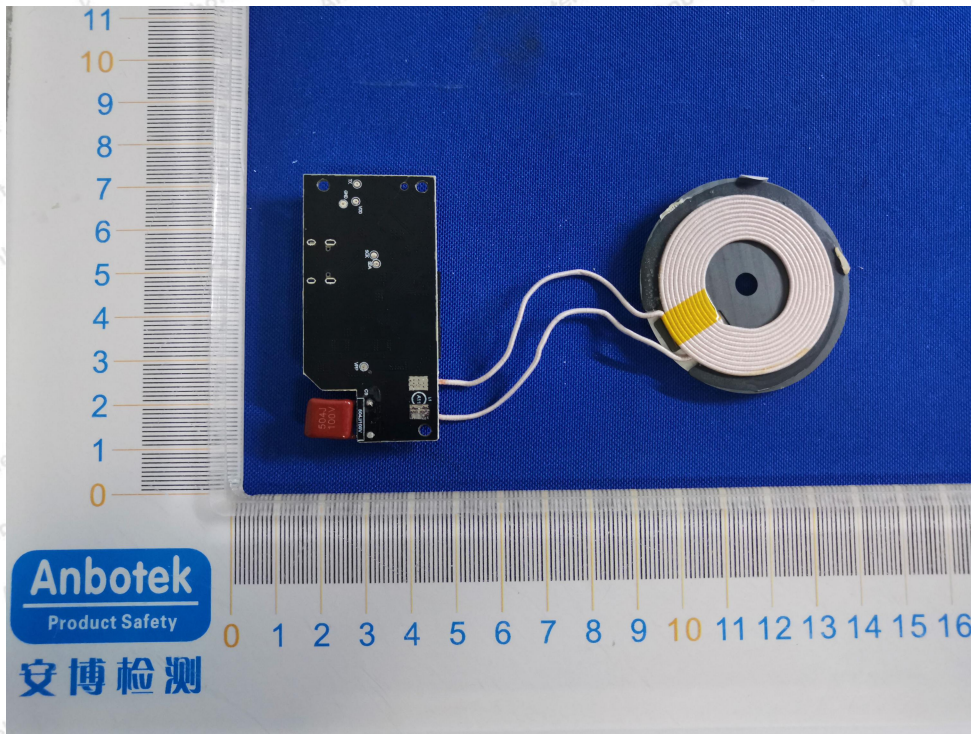


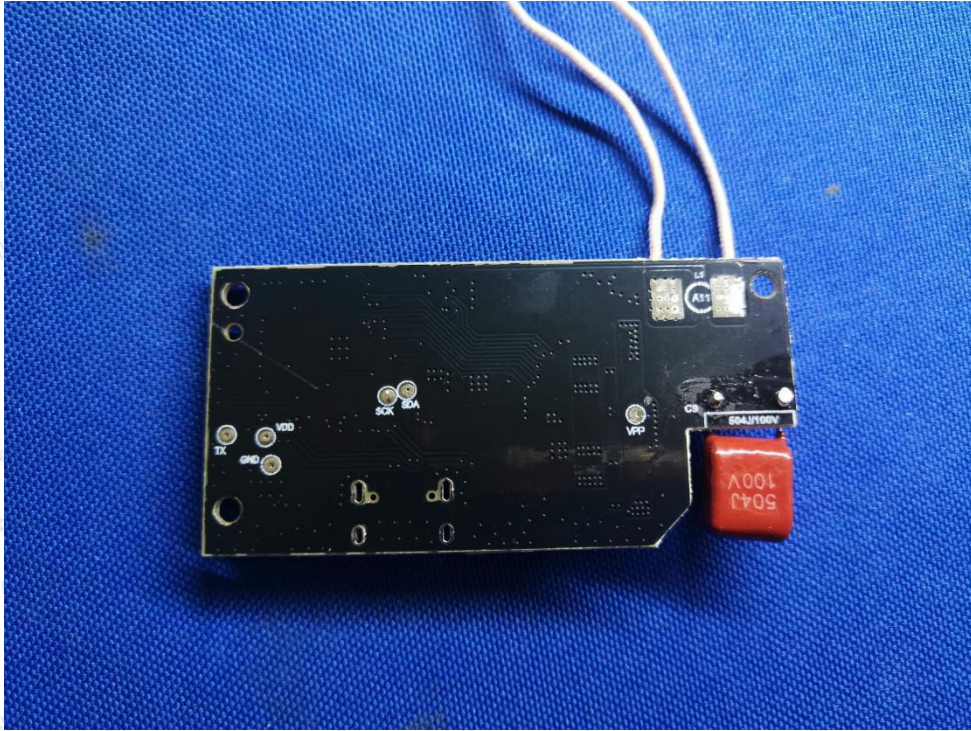




ANT







----- End of Report -----