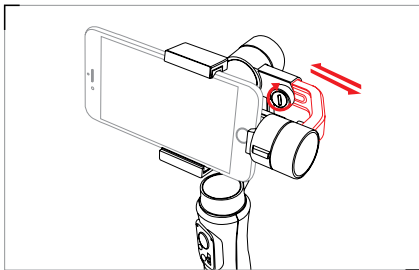
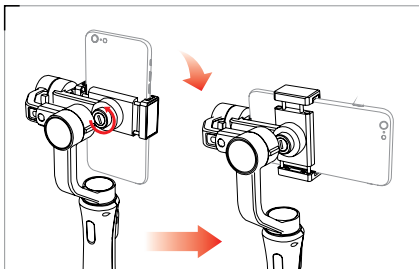


Gravity Center Adjustment



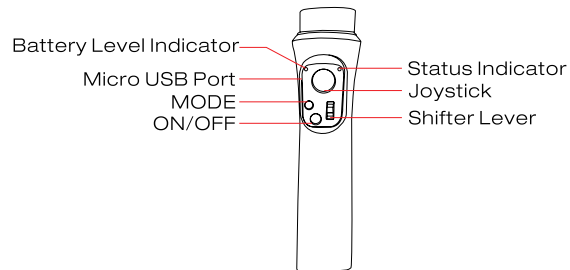
Make sure the smartphone is balanced properly. If the smartphone fails to stay in level and keeps tilting when mounted, then you need to balance it. Loosen the Roll Axis(Y Axis) Thumb Screw to adjust the gravity center by sliding the horizontal arm (as marked red in the Figure) until the smartphone stays still and vertical on the tilt axis. Tighten the Thumb Screw after the smartphone is well balanced in level to ensure normal operations.

Switching Mobile Mounting Direction



Loosen the smartphone Clamp Thumb Screw on the back and rotate the clamp with the smartphone mounted to the desired direction (either in horizontal or vertical). Tighten the Thumb Screw to ensure normal operations.
Do not switch the mobile direction when the stabilizer is powered on.

Control Panel Introduction



Joystick Operation

Joystick controls the smartphone movement when pushed or pulled up/down and left/right.

Power ON/OFF

Long press the Power Button for about 3 sec. to power on/off. The power button is used for camera shooting controls when paired to the Mobile APP.

Micro USB Port

Connect the stabilizer with a 5V power source using a Micro USB cable for charging.

Battery Level Indicator

Shines BLUE light when the stabilizer is in normal operation, the flashing frequency of the BLUE light indicates the current battery level:

- Quick flash 4 times for battery level of 76%-100%.
- Quick flash 3 times for battery level of 51%-75%.
- Quick flash 2 times for battery level of 26%-50%.
- Quick flash 1 time for battery level of 1%-25%.

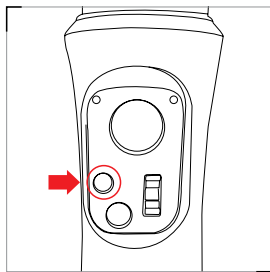
Shifter Lever Operation

When connected to the smartphone with the APP on, push the Shifter lever up/down to adjust the focal length.

Status Indicator

Flashing light shows charging, the light goes off indicating charging finished. The red light quickly flashes and then goes off indicating switching ON/OFF the gimbal.

MODE Button



1. The Stabilizer enters Pan Following Mode by default each time when powered on. Switch into Following Mode by double pressing on the MODE button. Double press the MODE button again to enter the Locking Mode. Double press the MODE button under the Locking Mode will return to Pan Following Mode.

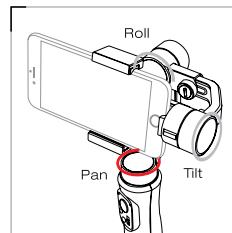
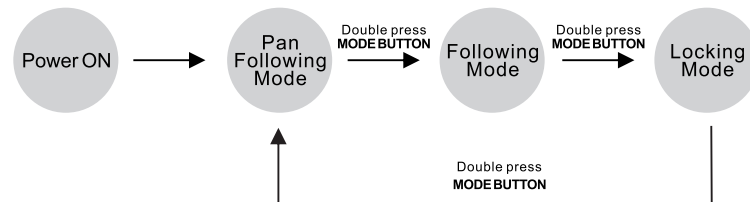
2. Press 3 times on the MODE button to switch to the vertical shooting. Push the joystick up/down allows manual control of a certain angle of the tilt axis. (Notice: when switched to vertical shooting, only Pan Following Mode available.)

Press 3 times on the MODE button again to switch to the horizontal shooting.

3. Long press the MODE button for 3 seconds to enter standby mode.

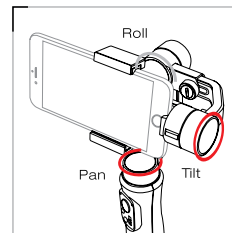
4. Press 4 times on the MODE button can back to the initial position.

MODE SWITCH



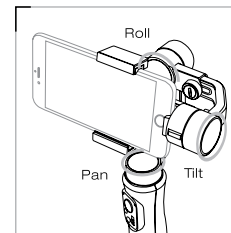
Pan Following Mode

The smartphone pans left/right following the movement of the stabilizer while the tilt and roll axes are locked. Push the joystick up/down allows manual control of the tilt axis.



Following Mode

The camera pans and tilts following the movement of the stabilizer. Push the joystick up/down and left/right allows manual control of the tilt axis and pan axis.

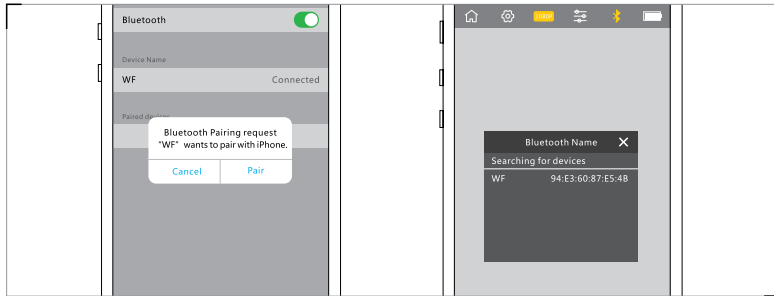


Locking Mode

This mode locks movement of all three axes to keep the camera still and stable. Push the joystick up/down and left/right allows manual control of the tilt axis and pan axis.


Connecting the Stabilizer to Smartphone

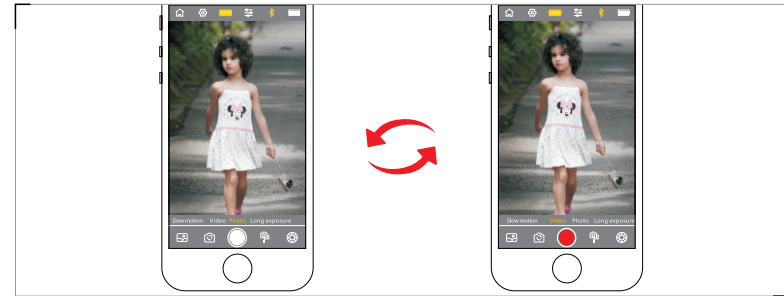
1. Long press the Power Button for 3 sec. to power on the Stabilizer.
2. Turn on Bluetooth in Settings of your smartphone. Search for "WF" signal and connect.
3. Tap WeiFeng's APP icon to open. Tap the Bluetooth icon on the top of the APP and choose "WF" signal to connect again. When the Bluetooth icon turns yellow, you can start APP operation.



Take Photos and Videos

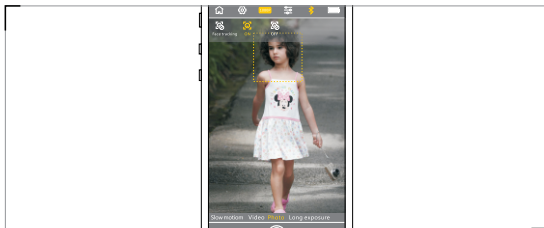
Single click the ON/OFF button on the stabilizer handle to take photo, or start /stop video.

1. Tap WeiFeng's APP icon to open. Click into camera screen.
2. For Android, there are four modes to take photography. Photo, Video, dynamic time-lapse photography and static time-lapse photography. For ios, there are six modes to take photography. Photo, Video, long exposure, slow motion, dynamic time-lapse photography and static time-lapse photography.
3. Click  icon to switch between the front and rear cameras.




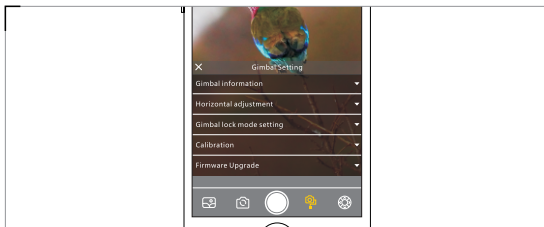
Face Tracking

1. Tap to activate photo/video in the APP.
2. Tap  icon on the Toolbar and then tap  icon on the drop- down menu to activate Face Tracking. The stabilizer will follow and focus the target face automatically.




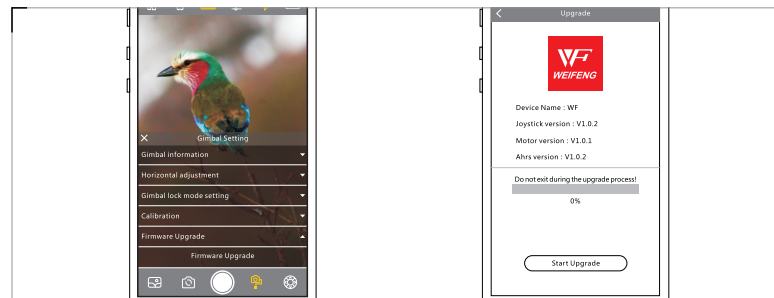
Gimbal Setting Screen

Allows adjustment of various parameter settings of the stabilizer. Tap  icon at the bottom of the APP to make adjustment. (Refer to APP instructions for specific operations.)



Firmware Upgrade


It can be operated through mobile APP.
Tap  icon at the bottom of the APP and choose "firmware upgrade" to complete.

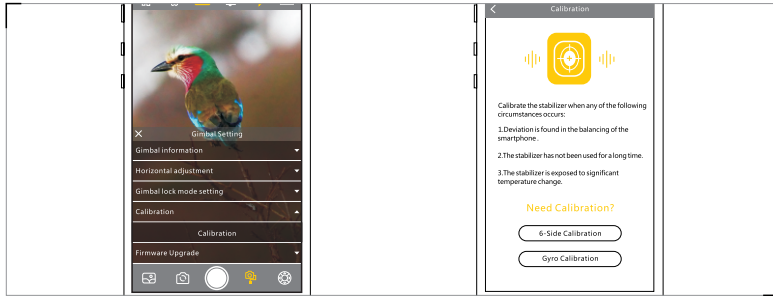


Calibration

Calibrate the stabilizer when any of the following circumstances occurs:

1. Deviation is found in the balancing of the smartphone .
2. The stabilizer has not been used for a long time.
3. The stabilizer is exposed to significant temperature change.

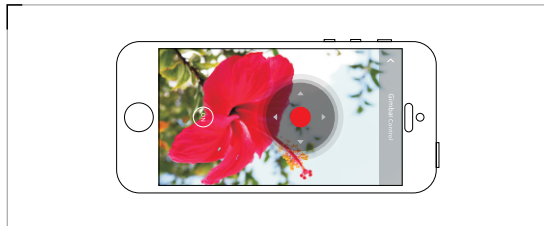
Operate the calibration on mobile APP by connecting to the smartphone. Tap  icon at the bottom of the APP and choose "Calibration" to calibrate the stabilizer.



Control Screen

Functions like the Joystick of the Stabilizer and allows various controls to the stabilizer, including change of Gimbal Control Mode and corresponding axis movement control.

Tap the  icon at the bottom of the APP to change the control of the stabilizer.



Product Specifications

	Min	Standard	Max.	Remarks
Input Vol.	6.8V	8.4V	12.6V	
Operation Current	80mA	110mA	1500mA	
Operation Temperature	-10°C		+45°C	
Operation Time		12h		Well balanced with camera mounted
Weight		450g		
Battery		2xLi-ion 3.7V, 2000mAh		
Tilt Angle Range		320°		
Roll Angle Range		320°		
Pan Angle Range		360°		Unlimited rotation
Compatible Models		Smartphone with size Under 6.0"		
Controllable Tilt Angle	-135°		+185°	
Controllable Roll Angel		0°		Vertical shooting -30°~+30°
Controllable Pan Angle		360°		Unlimited rotation
Payload	75g		200g	
Charging Time		2.5h		
Charging Voltage /Current		5V/1500mA		
Power Output Vol. /Current		5V/2000mA		

Warranty Card

Warranty period Statement:

1. Customers are entitled to replacement or free repair service in case of quality defects found in the product within 15 days upon receipt of the product.
2. Customers are entitled to free repair service for any product proven defective in material or workmanship that results in product failure during normal consumer usage and conditions within one year from the date of purchase.

This warranty does not apply to the following:

1. Products subjected to unauthorized repair, misuse, collision, neglect, mishandling, soaking, accident, and unauthorized alteration.
2. Products subjected to improper use or whose labels or security tags have been torn off or altered.
3. Products whose warranty has expired.
4. Products damaged due to force majeure, such as fire, flood, lightning, etc.

To obtain the warranty service, please follow these steps:

1. If failure or any problem occurs to your product after purchase, please contact a local agent for assistance. If there is no local agent, you can always contact our customer service through email or website.
2. Your local agent or customer service will guide you through the whole service procedure regarding any product issue or problem you have encountered.
3. Weifeng reserves the right to reexamine damaged or returned products.

Customer Information

Customer Name	Contact No.
Address	

Sales Manager

Sales Date	Dealer
Dealer Contact No.	

#1 Maintenance Record

Service date	Signature of Repairman
Cause of Problem	
Service Result:	<input type="checkbox"/> Solved <input type="checkbox"/> Unsolved <input type="checkbox"/> Refunded/ Replaced

Changes or modifications not expressly approved by the party responsible for compliance could void the user's authority to operate the equipment.