

WINDOW CLEANING ROBOT

Instruction Manual



CONTENTS

1. Safety Criteria	2
2. Product Composition	5
2.1 Package contents	5
2.2 Technical parameters	5
2.3 Part name	6
3. Product Manual	7
3.1 Precautions before use	7
3.2 Install the cleaning cloth	8
3.3 Connect the adapter	9
3.4 Assemble the safety rope assembly	9
3.5 Product work	10
3.6 Product pause	12
3.7 End the work	13
4. Maintenance	14
4.1 Cleaning cloth	14
4.2 Bottom components	14
5. APP Usage	16
6. Path planning description	17
7. Fault Description	18
8. Warranty Card	20

1. Safety Criteria

Please read this manual carefully before using the product.

Please save the instruction manual.

When using the product, please keep consistent vigilance and observe the following matters:

⚠ 1. This product is strictly forbidden to use under the following conditions:

- 1.1 Products can not be used by children under 12 years old and the person physically or mentally impaired. If you need to use it, please do so under the supervision of the guardian. Please do not allow children close to the working robot or as robot be a toy to play.
- 1.2 Do not use this product on glass that has broken marks, ad paper, or bumps to avoid the risk of broken glass, dropped product, and so on.
- 1.3 Do not use this product on non-planar glass such as curved surface and beveled surfaces.
- 1.4 Do not use this product on framed glass with a glass frame thickness of less than 5 mm.
- 1.5 Prohibit the use of large areas of wet or oily glass to avoid slipping products caused by the risk of falling.
- 1.6 After wiping, you can use detergent to clean the cleaning cloth. After cleaning, please dry it in time.
- 1.7 Do not place this product in water or other liquids to reduce the risk of electrical shock. Do not store this product where it may fall or be pulled into the tub or sink.
- 1.8 Do not use the product in a situation where the product is not completely adsorbed or has been significantly damaged.
- 1.9 Do not touch the plug or the product with wet hands.
- 1.10 Do not place the machine on household appliances, damp or have a fire source to charge, so as to avoid unnecessary losses.
- 1.11 Even if the product has been seriously damaged, the products can be banned. The battery may cause an explosion.
- 1.12 Strictly prohibit the use of this product without fixing safety rope assemblies.
- 1.13 Do not use the product with a damaged power cord or an electrical

1. Safety Criteria

outlet. Do not use the product when it is not working properly due to dropping, damaging or water ingress. To avoid injury, the product should be repaired by the manufacturer or its after-sales service department.

1.14 The cleaning cloth can be applied to the wet glass surface, Non-reflux of water droplets on glass. When the flow of water on the glass is left, it is strictly prohibited to use this product.

⚠ 2. The following conditions should be noted when using this product:

- 2.1 Products just can use for outside when the temperature at 0-40 degrees, no heavy wind, no rain and dry air. When using the product through the safety rope and safety buckle must be properly connected.
- 2.2 Always keep the product powered on while the product is in operation. Products built-in security backup battery is only used to maintain the product and then a sudden power failure, in a limited period of time to maintain adsorption on the glass does not fall, not as a normal work power supply, so as not to bring the risk.
- 2.3 Use only in a domestic environment. Do not use in commercial or industrial areas.
- 2.4 Please use the product as indicated in the instructions, use only the accessories recommended or sold by the manufacturer; use only the original rechargeable battery and adapter made by the manufacturer, and ensure that the voltage of the power supply is in line with the voltage marked on the adapter.
- 2.5 Please use the power line carefully to avoid the damage. It is forbidden to use the power line to drag, pull the product or use the power line as a handle; it is forbidden to close the glass window with the power line or put the goods on the power line in the process of use, and the power line should be far away from the heat source.
- 2.6 If the soft wires of the power cord are damaged, they must be replaced by the manufacturer, his or her maintenance department or similar professionals in order to avoid danger.
- 2.7 The plug must be unplugged from the socket before maintaining or cleaning the product, but not from the socket by pulling the power cord.

1. Safety Criteria

- 2.8 Battery charging can not be carried out in an overheated or undercooled environment to avoid affecting battery life. If you don't use it for a long time, please charge the battery every 1-2 months for 2 hours.
- 2.9 The battery must be replaced by the professional staff of the manufacturer, its maintenance department or similar department. Before the product is scrapped, the battery must be removed and discarded according to local laws, regulations and environmental regulations.
- 2.10 If you need to scrap the product, please cut off the power supply and remove the battery from the product. Please dispose of used batteries in accordance with local laws and regulations and environmental regulations.

⚠ Please use the product in accordance with the instructions of this manual. The company is not responsible for any loss or injury caused by improper use.

⚠ Suction cup use precautions

1. The suction cup is only suitable for the glass surface. Please wipe the suction cup and glass surface before use, keep the adsorption surface dry and clean.
2. Press the suction cup firmly against the glass surface (notice: handle in separate state), Then pull the two handles together
3. After the suction cup is absorbed, please check if the suction cup is completely absorbed.
4. Attach the two ends of the safety rope to the handle of the suction cup and the window cleaning machine. Confirm it is secure then can use.

2. Product Composition

2.1 Package Contents



Host



Adapter Component



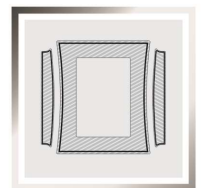
Instruction Manual



Safety Rope Components



Remote Control



Cleaning Cloth

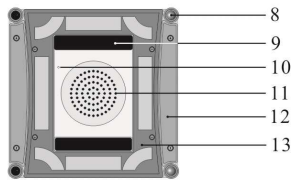
2.2 Technical Parameters

Operating Voltage (V)	24 \equiv	Rated power (W)	80 \equiv
Remote control			
Rated input voltage (V)		3 \equiv	
Adapter Type: WT-2403750			
Input: AC110-240V 50/60Hz		Output: DC24V 3.75A	

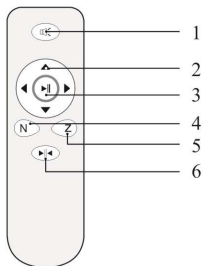
2. Product Composition

2.3 Part name

Host



1. Pause /Start button
2. Handle
3. Power jack
4. Power switch
5. Air outlet
6. Floating wiping chassis
7. Guide wheel
8. Anti-drop sensor
9. Drive wheel
10. Suction sensor
11. Air inlet
12. Cleaning cloth paste area 1
13. Cleaning cloth paste area 2

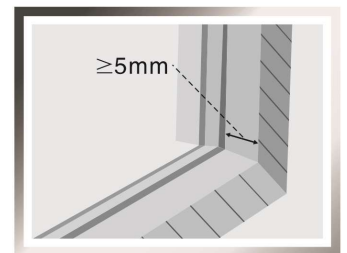


1. Alternate key
2. Arrow key(forward/reverse/
left rotation/right rotation)
3. One-button start
4. N mode button
5. Z mode button
6. Calibration key

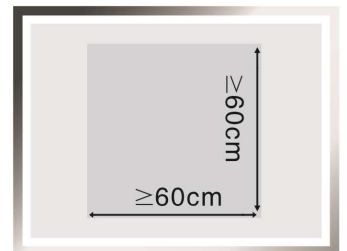
3. Product Manual

3.1 Precautions before use

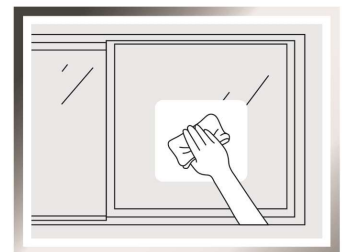
It is strictly forbidden to use this product on framed glass with a thickness of the border (height difference from the glass surface to the bezel) of less than 5 mm.



Use this product in a framed or frameless ratio of $\geq 60 * 60 \text{ cm}$, $\leq 3 * 3 \text{ m}$



If there is too much dust on the surface of the glass, wipe out a clean area of product size before using the product for product adsorption.



3. Product Manual

⚠ When the product is working on the horizontal glass surface, please use the remote control to control it to operate ; If the window which is not vertical completely, the product may not work properly, please make sure that someone is watching and can provide help for the product if necessary.

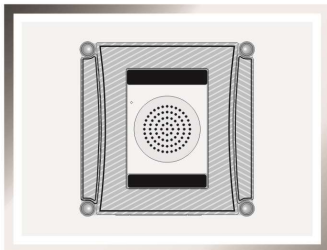
⚠ This product can not be used in the inverted case.



3.2 Install the cleaning cloth

Put the two small wipe cloth on the left and right sides of the bottom of the machine.

Put the square wipe cloth on the middle of the bottom of the machine.

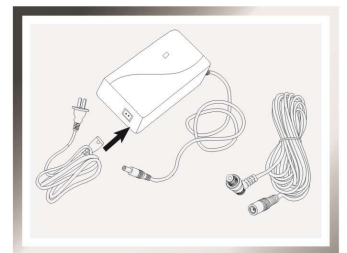


Before use, spray a small amount of water on the cleaning cloth and place it on the surface of the glass. Do not pour water on the glass surface or on the product.

3. Product Manual

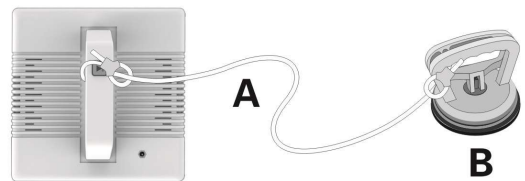
3.3 Connect the adapter

Open the power line end of the product and the power line end of the adapter, then connect and tighten them. Please note collocate with the safety rope component. One end of the adapter need plug into power outlet and the other end need plug into the product.



3.4 Safety rope component assembly

Use the product to wipe the glass, please connect safety rope component to increase the safety of the product.



A. Safety Rope

B. Suction cup



Note: suction cup direction for use

1. suction cup only suitable for smooth glass surface (frosted glass can't be used) Clean the suction cup and the glass before use, to keep the adsorption surface dry and clean.
2. Press hard the suction cup against the glass surface, then press the handle.
3. After the suction cup is adsorbed, please test the sucker whether firm.
4. Connect the two ends of the safety rope to the handle of the sucker and the handle of the window cleaning machine. use it after confirm fastness.

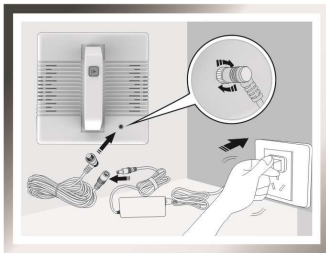
3. Product Manual

3.5 Product work

- 1** Connect the power supply, the extend cable and tighten the nut.

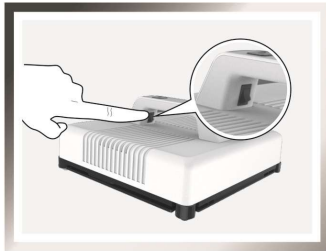
Make sure fasten the safety rope

Don't disconnect the power when the product is working; if the power is off, the product will be at risk of falling.



- 2** Turn on the power switch

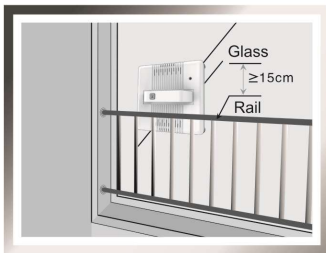
After turning on the power, don't let the air inlet close to small objects such as hair, to avoid block the air inlet and affect the operation of the product.



- 3** Secure placement

Make sure the product is in the normal operating state, place it on the glass surface, make sure the product is completely adsorbed on the glass, then release the handle.

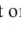
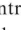
If there is an immovable obstacle (such as a guard rail, furniture, etc.) in front of the window, then the window and obstacle spacing greater than 15cm can use this product.

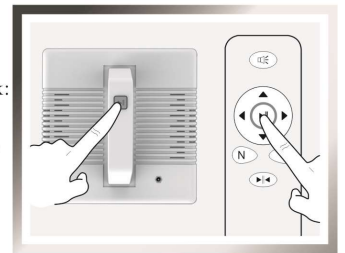


3. Product Manual

- 4** Start working

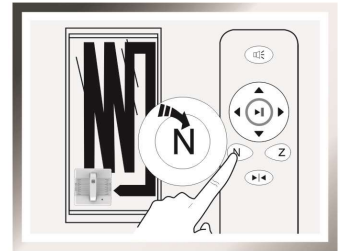
Automatic Mode:

There are two ways to start the work: Press the button  on the host or the button  on the remote control, all can start the automatic mode.



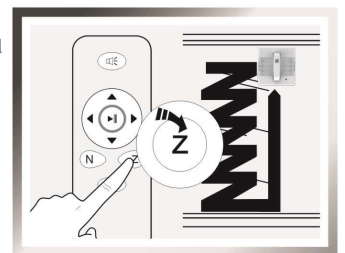
N Mode:

Operation via remote control mode key N key: for vertical glass, the product to "N" route to work.



Z Mode:

Start the work by the remote control mode key Z key: for horizontal glass, the product to "Z" route to work.



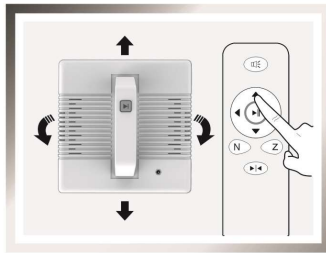
3. Product Manual

Manual Mode:



Use a remote control to control the operation of the machine and the up,down, left and right.

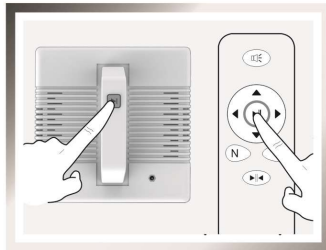
Among:

Up and down keys are forward / backward. Right and left keys to adjust the machine direction.

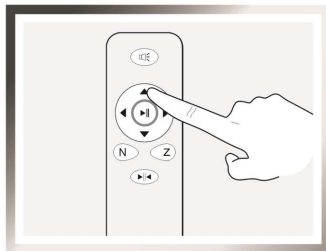


3.6 Product pause

In the process of working, by host or remote control  to pause, need to restore work, again press , machine is shipped according to the original route.



In the case of pause, the direction of the product can be controlled by the direction key on the remote control, and the work route of the product can be switched. (machine no longer memorize the route before it)




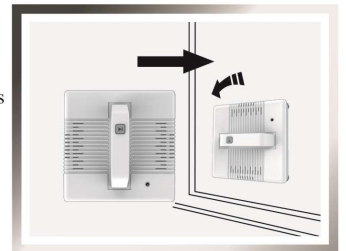
3. Product Manual

3.7 End the work

End glass cleaning, the product will return to the start position, the beep sounds.

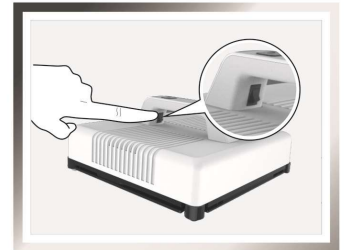
1 Remove the product

Grip the product handle, press  about 5 seconds, the fan stops working, then remove the host from window. Use a dry cloth to gently wipe off the mark on the glass.



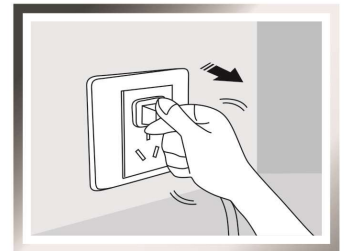
2 Power off

Press  will turn off.



3 Disconnect power

Remove the safety clip and disconnect the power supply.

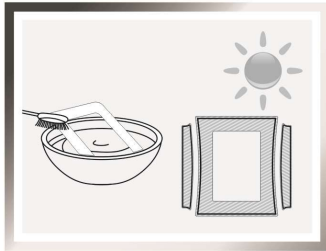


4. Maintenance

4.1 Cleaning cloth

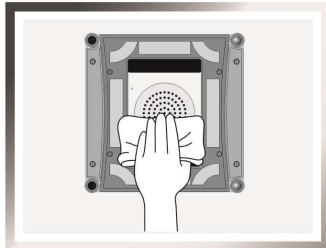
Soak in clean water of about 20 degrees for two minutes, then brush with a soft brush.

Do not rub or wring dry, dry naturally before use.



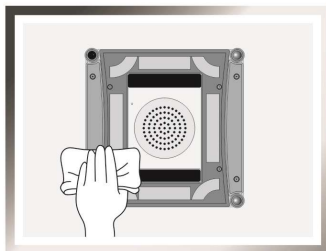
4.2 Bottom components

Fan: Clean with a dry cloth so as not to damage the product suction.



Fall prevention sensor:

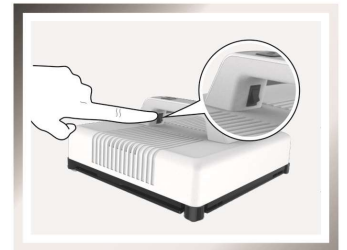
Clean with a dry cloth to maintain its sensitivity.



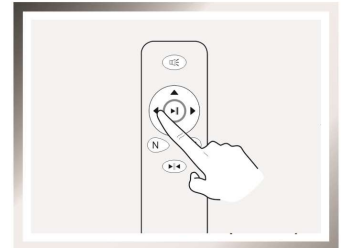
4. Maintenance

Steps to clean walking belt:

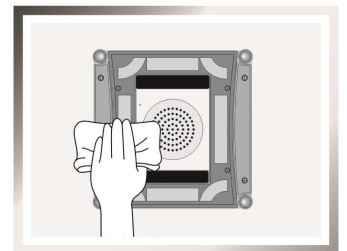
1. Power on (can not connect the power cord)



2. Press and hold the left or right button of the remote control to rotate the pulley.



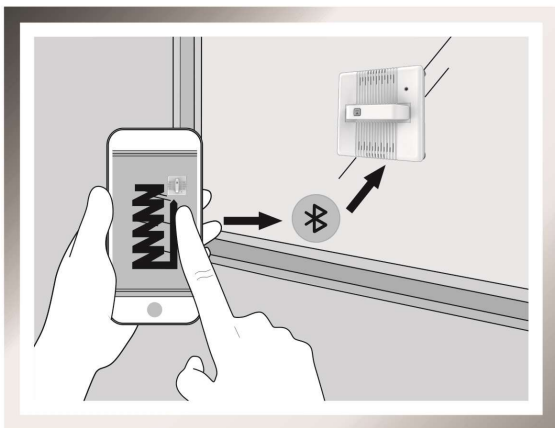
3. Wipe the pulley with a clean, damp cloth.



5. APP Usage

APP Usage:

1. Android phone, please scan the box QR code to download and install, iPhone, please search WinRobot in the apple store application store to download and install.
2. After installation, please open the phone Bluetooth, enter the software and click the Bluetooth logo to search for the device.
3. The device name of the window cleaning robot is "WinRobot", click "WinRobot" to connect and match.
4. After the system prompts the connection is successful, you can use the APP function.



6. Path planning description

“N” key: The machine from left to right in accordance with the N route wipe. Automatic wipe complete will back initial position.

“Z” key: The machine from top to bottom in accordance with the Z route wipe. Automatic wipe complete will back initial position.

Up and down keys are forward / backward.

Right and left keys to adjust the machine direction, Pause button to stop or wait for machine stop automatically.

7. Fault Description

I Troubleshooting Solution:

Number	Appearance	Solution
1	Machine walking is laborious and not smooth	1. Machine belt are stained with dust or cloth is too wet, Wipe the belt or replace it with another cloth that is not too wet, as per the way the belt is wiped.
2	The machine stopped at the glass frame	The bottom of the machine is stuck by skidding tracks or too thin glass frame. The machine skid treatment mode is the same as above.
3	Machine walking is not straight/jitter	Accidentally press the remote control calibration key during machine walking. Recalibrate the machine in accordance with the calibration method specified in the manual.
4	Press the remote control button no response	Press the remote control to code key and machine to code.
5	Green or yellow light is not on	The machine must be connected to the power cord and extension cord. Check whether the power cord is connected in place. Or contact the after-sales service center
6	Insufficient suction after the machine is placed on the glass	Check whether the wipe cloth is in place or contact the after-sales service center
7	Part of the glass area leaked	1. Check whether the four-corner borderless detection sensor rebounds well. If there is foreign matter, please take out the foreign object. 2. Please check if the belt is dirty or slippery. If yes, please clean the belt with a wet cloth.

7. Fault Description

II Product calibration:

The product has been calibrated at the factory, and the user does not need to calibrate it under normal use. If you have a serious bump and do not use it for a long time, you may need to calibrate it yourself. The calibration steps are as follows:

1. After the product is connected to the power supply, turn on the power switch (or not open), and the charging indicator lights up;
2. The hand-held machine is attached to the surface of the window glass to keep the machine head up;
3. Long press the remote control calibration button, the machine will make a drip sound;
4. long press the N button, the machine emits di di sound;
5. Keep the machine head vertical to the left, short press the Z button, the machine will make di di sound.

8. Warranty Card

Warranty Card

Dear client:

Thank you for purchasing and using our products! In order to protect your rights and interests, this product in the national provisions of "commodity warranty replacement liability provisions" (commonly known as three guarantees) on the basis of the implementation of after-sales service. In order to make our service more satisfactory to you, please read this three-pack card carefully and keep it properly.

Description of product quality assurance: I. please note: this three-pack card is a quality guarantee certificate, which is valid only with the seller's stamp. Service validity: the date of purchase shall take effect, that is, the date of sale specified in this certificate shall prevail. Service content: free maintenance or replacement service will be provided for the products purchased within one year of normal use and maintenance within the three guarantees period. You must carry valid certificates such as three-pack card and invoice for maintenance or replacement.

1. Unauthorized alteration of three packs of CARDS beyond the expiry date of three packs.
2. Damage is caused by failure to use, maintain or keep the product according to the instructions.
3. Damage anti-counterfeiting labels or disassemble products without permission.
4. Damage of products caused by human factors (such as operation error, handling damage, bump, improper voltage input, etc.).
5. Product damage caused by force majeure (such as earthquake, fire, flood).

user name		phone number	
Dealer name		Purchase date	
Product model		Product serial number	
email			
Distributor's seal			

FCC Statement

This equipment has been tested and found to comply with the limits for a Class B digital device, pursuant to part 15 of the FCC rules. These limits are designed to provide reasonable protection against harmful interference in a residential installation. This equipment generates, uses and can radiate radio frequency energy and, if not installed and used in accordance with the instructions, may cause harmful interference to radio communications. However, there is no guarantee that interference will not occur in a particular installation. If this equipment does cause harmful interference to radio or television reception, which can be determined by turning the equipment off and on, the user is encouraged to try to correct the interference by one or more of the following measures:

- Reorient or relocate the receiving antenna.
- Increase the separation between the equipment and receiver.
- Connect the equipment into an outlet on a circuit different from that to which the receiver is connected.
- Consult the dealer or an experienced radio/TV technician for help.

To assure continued compliance, any changes or modifications not expressly approved by the party.

Responsible for compliance could void the user's authority to operate this equipment. (Example- use only shielded interface cables when connecting to computer or peripheral devices).

This equipment complies with Part 15 of the FCC Rules. Operation is subject to the following two conditions:

- (1) This device may not cause harmful interference, and
- (2) This device must accept any interference received, including interference that may cause undesired operation.

FCC Radiation Exposure Statement:

The equipment complies with FCC Radiation exposure limits set forth for uncontrolled environment. This equipment should be installed and operated with minimum distance 20cm between the radiator and your body.

Any Changes or modifications not expressly approved by the party responsible for compliance could void the user's authority to operate the equipment.