

EDISON
●●●●●●●●●●
PROFESSIONAL

EP-10000

BSP1456

**TROLLEY SPEAKER
USER MANNUAL**



PLEASE READ USER MANNUAL CAREFULLY BEFORE USE SPEAKER.

Important safety measures

Before using this machine, please read all the safety and operating instruction, meanwhile, please observe all the indication about safe operating. These safety and operating instructions should be kept in condition of consultation.

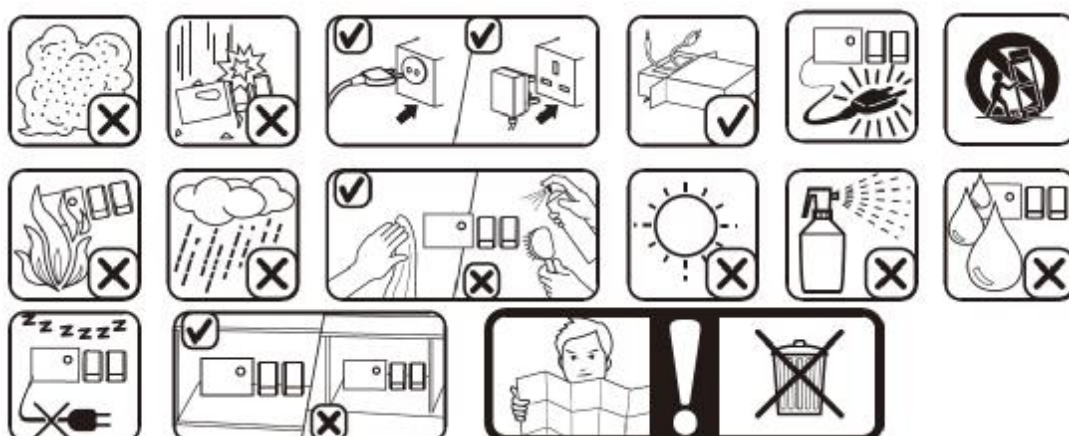
1. Protection of electric power supply line: Be ware the electric power supply line is not tramped , pressed by heavy objects. Pay special attention to the plug of power supply line and outlet on the machine. Do NOT lengthen the electric shock, DO NOT pull or drag the power supply line.
2. Ventilation : This set must be put in ventilation place. DO NOT put disk on it or cloth to cover it. The distance away from the wall should not be less than 10 centimeters. DO NOT put this set on the bed, sofa, carpet or other objects with similar surface in case of good ventilation.
3. Casing dismantling: DO NOT dismantle the case. If one touches the inner components, he will probably get serious electric shock.

4. Unusual smell : When you discover unusual smell and smoke , cut power supplies immediately and pull out the plugs from the outlet on the wall. Contact the sell shop or nearest repairing center.

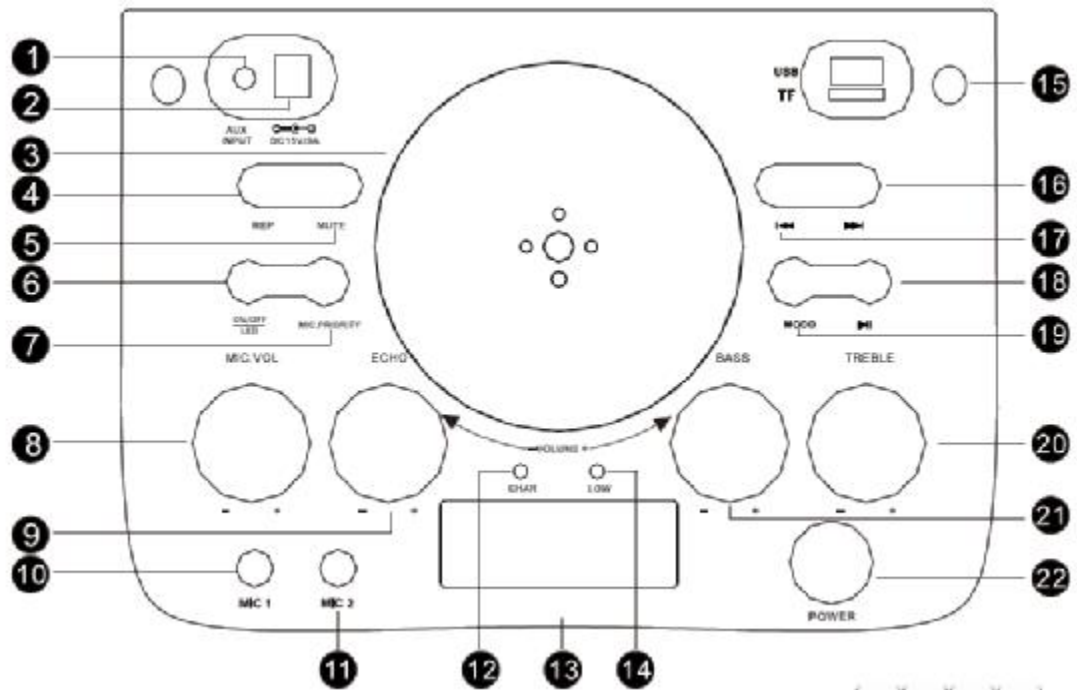
Attention: This set applies to AC110V-240V/50Hz-60Hz power supply. Use standard power supply. Do not use power supply of small output and unsteady voltage.

Note: The apparatus shall not be exposed to dripping or splashing and that no objects filled with liquid, such as vases, shall be placed on the apparatus.

In use please pay attention to the following items:



EP-10000 Control Panel



- | | | | |
|----|---------------------|----|---|
| 1 | AUX INPUT | 12 | Charge lamp(The red light will be on when charging the speaker,The green light will be on when the battery is full) |
| 2 | DC15V/3A INPUT | 13 | LED display |
| 3 | Volume adjust | 14 | Battery LOW indicator light |
| 4 | USB/TF Repeat Keys | 15 | USB/TF terminal |
| 5 | MUTE Keys | 16 | USB/TF volume+/next keys |
| 6 | LED ON/OFF Keys | 17 | USB/TF volume-/prev keys |
| 7 | MIC.PRIORITY ON/OFF | 18 | USB/TF Play and suspend keys |
| 8 | MIC Volume | 19 | USB/TF /AUX/FM input conversion keys |
| 9 | MIC ECHO | 20 | Treble adjust |
| 10 | MIC1 input | 21 | Bass adjust |
| 11 | MIC2 input | 22 | POWER ON/OFF |

BLUE-TOOTH FUNCTION OPERATION INSTRUCTION:

1. Press MODE to select Bluetooth input mode.
 2. Open Bluetooth function on the mobile phone, laptop, iPod etc……portable device, and search Bluetooth speaker (The Bluetooth speaker name is “BSP1456” ,no connection password)
 3. The portable device search the Bluetooth speaker and match it , if matching successfully , you will hear “ beep ” sound from the speaker.
 4. You can enjoy portable device music by speaker via blue-tooth function freely.
- Please attention: the portable device blue-tooth distance is 10m to 15m without wall and so on the intermediate barrier.

TROUBLE SHOUTING

Please follow the instructions below if you meet the following problems. If the problem remains after you check it, please turn to your local distributor for help or contact our company.

Problems	Causes	Solutions
----------	--------	-----------

No display	<ol style="list-style-type: none"> 1. Power plug is not probably plugged in 2. Power socket is broken 	<ol style="list-style-type: none"> 1. Reinsert power plug 2. Change the power socket
No sound	<ol style="list-style-type: none"> 1. Incorrect speaker connection 2. Wrong input mode 3. Volume at lowest level 	<ol style="list-style-type: none"> 1. Check speaker connection 2. Choose the right input mode 3. Turn the master volume key
Sound distortion	<ol style="list-style-type: none"> 1. Master volume too loud 2. The speaker is broken 	<ol style="list-style-type: none"> 1. Turn down master volume 2. Check whether the speaker is broken or not , if broken, then repair it.
No radio signal	<ol style="list-style-type: none"> 1. Not choose the radio channel 2. Receiving position is not good 	<ol style="list-style-type: none"> 1. Choose the radio channel 2. Turn the antenna to the right direction or move the speaker to proper position

Specification:

Output power (4Ω 1KHz, 1%THD)40W

Power supply.....AC110V-240V/50Hz

(1)§ 15.19 Labelling requirements.

This device complies with part 15 of the FCC Rules. Operation is subject to the

following two conditions: (1) This device may not cause harmful interference, and (2) this device must accept any interference received, including interference that may cause undesired operation.

§ 15.21 Changes or modification warning

Any Changes or modifications not expressly approved by the party responsible

for compliance could void the user's authority to operate the equipment.

§ 15.105 Information to the user.

Note: This equipment has been tested and found to comply with the limits for a

Class B digital device, pursuant to part 15 of the FCC Rules. These limits are designed to provide reasonable protection against harmful interference in a residential installation. This equipment generates uses and can radiate radio frequency energy and, if not installed and used in accordance with the instructions, may cause harmful interference to radio communications.

However, there is no guarantee that interference will not occur in a particular installation. If this equipment does cause harmful interference to radio or television reception, which can be determined by turning the equipment off and

on, the user is encouraged to try to correct the interference by one or more of the following measures:

- Reorient or relocate the receiving antenna.
- Increase the separation between the equipment and receiver.
- Connect the equipment into an outlet on a circuit different from that to which the receiver is connected.
- Consult the dealer or an experienced radio/TV technician for help.

Limited Warranty

This Limited Product Warranty is provided by BriteLite Enterprises. BriteLite warrants to Customer that the product is free from defects in materials and workmanship under normal use during the Warranty Period of 90 days for parts and 1-year labor. If the product fails to conform to the warranty then BriteLite or its authorized service will either repair or replace any nonconforming product, provided that Customer gives notice of noncompliance within the Warranty Period to BriteLite by emailing service@britelite.net or calling 310-363-7110 (Mexico customers can call 0155 4624 0251). Please retain the original dated receipt as evidence of proof of purchase.



Important: Please read this before returning this product

Please do not return the product to the dealer or initial place of purchase.

If your having difficulties installing or using this product, our support organization can help you regarding installation, set up and missing or replacement parts.

You can contact us:

E-mail- Service@britelite.net

Phone- 1-888-604-8881 or 310-363-7110

In Mexico Please Call 0155 4624 0251

