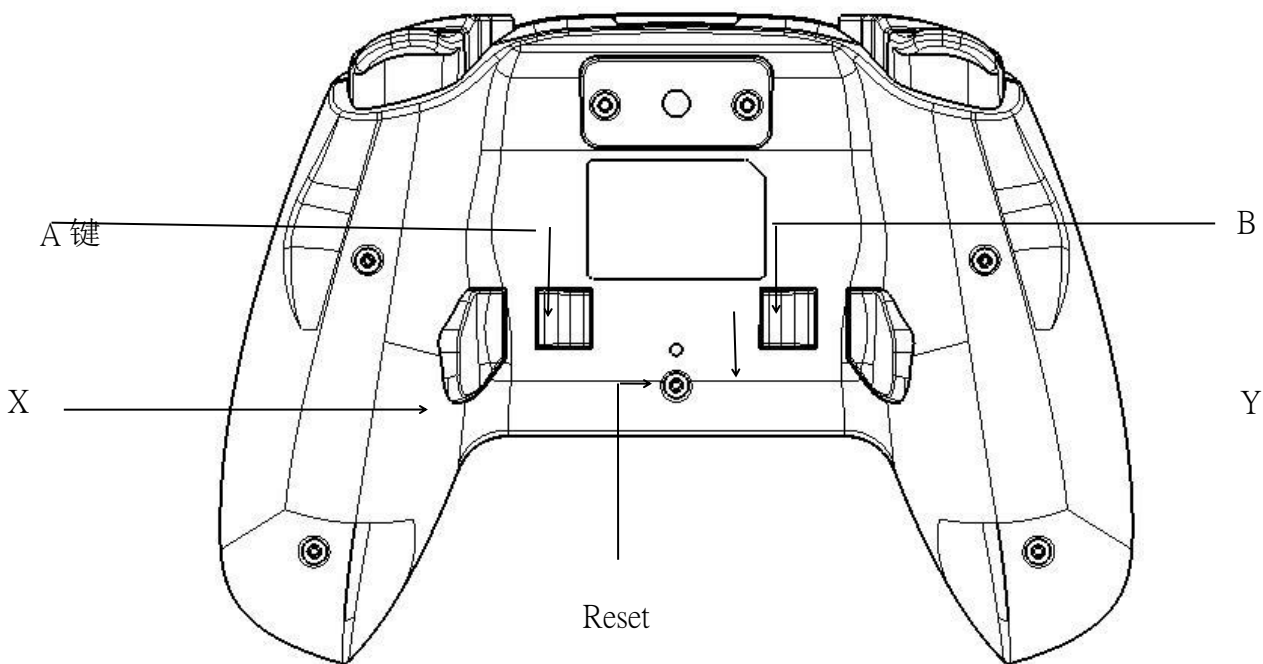
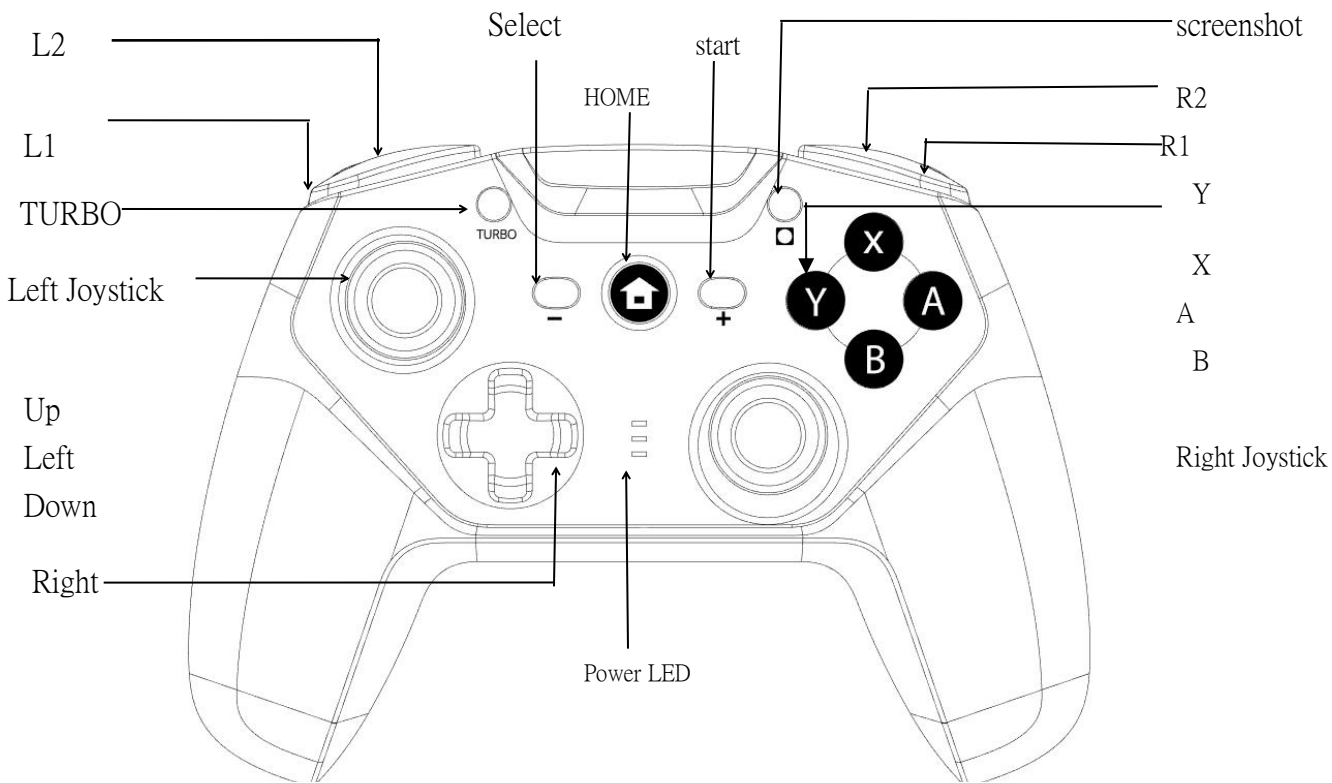


<h1>Switch Wireless Controller</h1> <h2>Specificate</h2> <p>Model No.: IX-SW055</p>	文件编号:	
	发行日期: 2018/06/15	
	版本:	B1

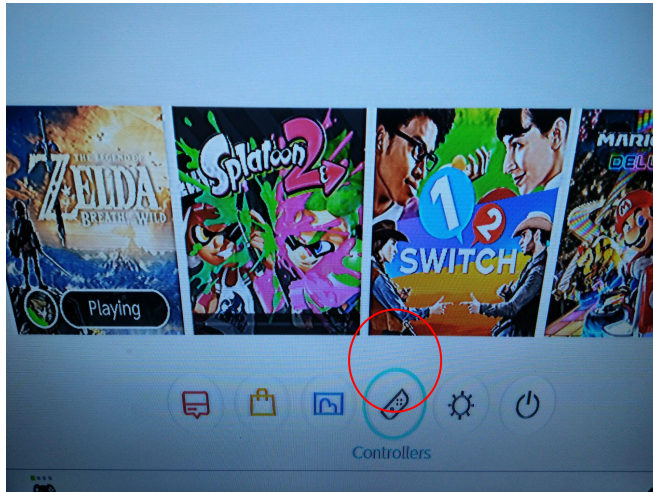
Button Function



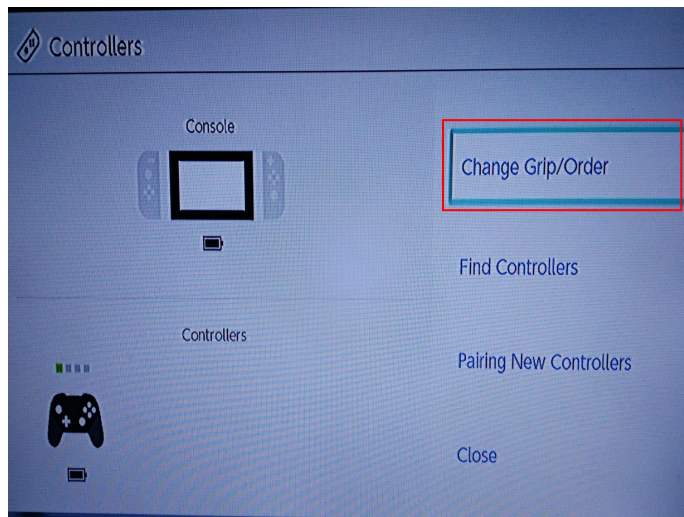
<h2>Switch Wireless Controller Specificate</h2>	文件编号:	
	发行日期: 2018/06/15	
	版本:	B1

一、Connection Instruction

1. Turn on the Switch console
2. Move the cursor to the Joy-con icon on the Switch console display



3. Press the A button on the Joy-con, enter to open the Bluetooth operation interface



4. Press the A button on the Joy-con to turn on the Bluetooth connection



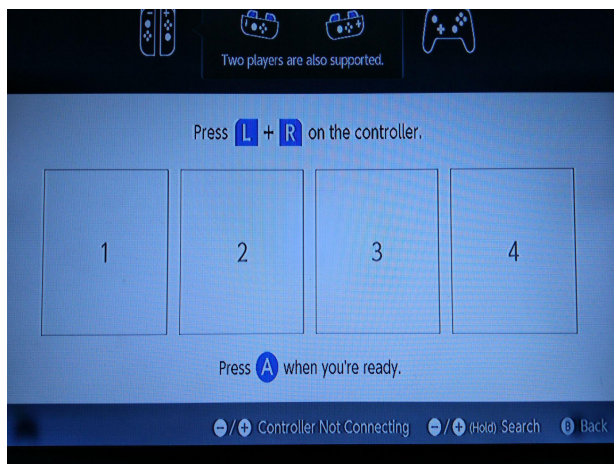
Switch Wireless Controller Specificate

文件编号:

发行日期: 2018/06/15

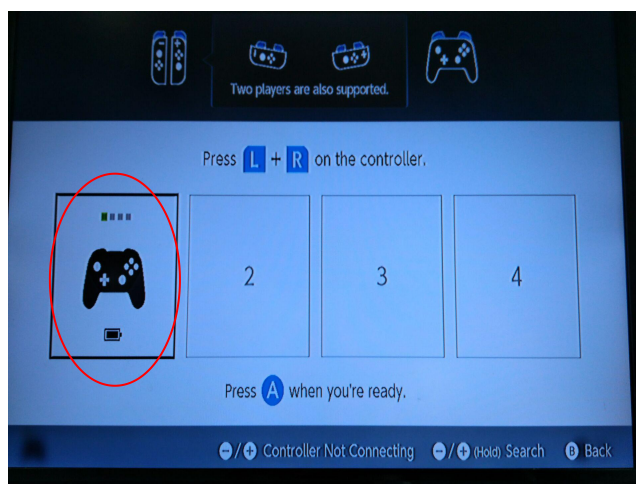
版本:

B1



5. Press the Y+Home button on the Switch Wireless Controller for 3 seconds. Turn on the controller Bluetooth mode. After the Bluetooth is turned on, the controller enters the pairing mode with the Switch console automatically. After the Bluetooth connection is successful, the power indicator light is on.

6. After the controller is successfully connected, the controller icon will appear on the Switch console display. Press the A button on the wireless controller to confirm and press the B button to return to the main page for game operation.



7. If there is no matching within 2 minutes, the controller will sleep automatically. Press Y+HOME on the wireless controller again to pair with the Switch console

FCC STATEMENT :

This device complies with Part 15 of the FCC Rules. Operation is subject to the following two conditions:

- (1) This device may not cause harmful interference, and
- (2) This device must accept any interference received, including interference that may cause undesired operation.

Warning: Changes or modifications not expressly approved by the party responsible for compliance could void the user's authority to operate the equipment.

NOTE: This equipment has been tested and found to comply with the limits for a Class B digital device, pursuant to Part 15 of the FCC Rules. These limits are designed to provide reasonable protection against harmful interference in a residential installation. This equipment generates uses and can radiate radio frequency energy and, if not installed and used in accordance with the instructions, may cause harmful interference to radio communications. However, there is no guarantee that interference will not occur in a particular installation. If this equipment does cause harmful interference to radio or television reception, which can be determined by turning the equipment off and on, the user is encouraged to try to correct the interference by one or more of the following measures:

- Reorient or relocate the receiving antenna.
- Increase the separation between the equipment and receiver.
- Connect the equipment into an outlet on a circuit different from that to which the receiver is connected.
- Consult the dealer or an experienced radio/TV technician for help.

RF warning statement:

The device has been evaluated to meet general RF exposure requirement. The device can be used in portable exposure condition without restriction.