

SS36  
Outdoor Smart Plug  
User Manual

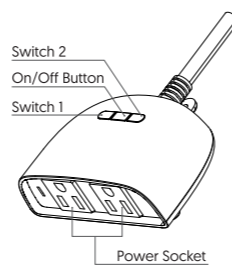
### Functions and Features:

Outdoor Smart Plug controlled by phone application and voice.  
Outdoor Smart Plug compatible with Amazon Alexa Echo, Google Home.  
Customize your own personal schedule to suit your needs.  
Share the devices with your family and they also can control home appliance.

### Package contents:

1xOutdoor Smart Plug	1xUser Manual
Product Name:	Outdoor Smart Plug
Model/HVIN:	SS36
Rated Voltage:	125V AC 50Hz-60Hz
Rated Current:	15A [Max.]
Max. Power:	1850W
FCC ID:	2AQN-SS36
Waterproof Level:	IP44
Working Temperature:	-20~60°C [-4~140°F]
Remote Control:	TECKIN App
Support System:	Android 4.1 / iOS 8.0
IC:	26241-SS31

01



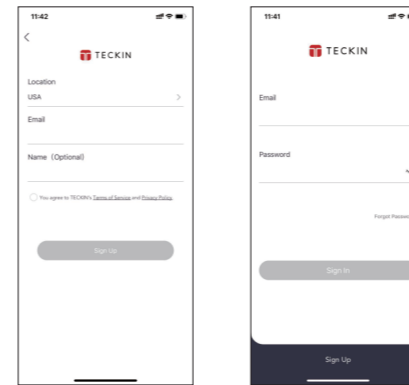
### Download & Registration

1. Scan the QR code to download the "TECKIN" App, you can also search "TECKIN" and download the App from the App Store or Google Play.



02

2. Run the "TECKIN" App and tap "Sign up" to register a new user account using your email address. Then sign in the App.

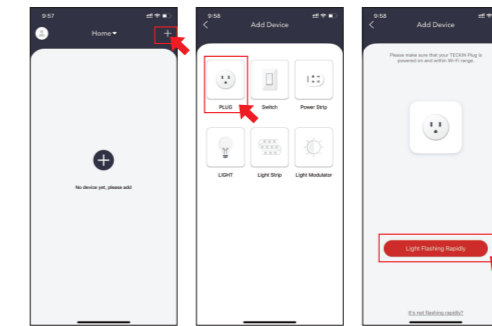


### Add Devices in Easy Mode

1. Make sure your smart device is turned on and connected to your Wi-Fi [2.4 GHz only].
2. Press and hold the power button for 5 seconds until the indicator light begins to flash quickly, this means that the device is ready to be paired.

03

3. Launch the "TECKIN" App and tap "+" in the middle of the screen. Select "PLUG" and tap "Light Flashing Rapidly".



4. Enter your Wi-Fi password and tap "Next". When the message "Connection succeeded" appears, it means the device is paired, and will now appear on the device list in your App.

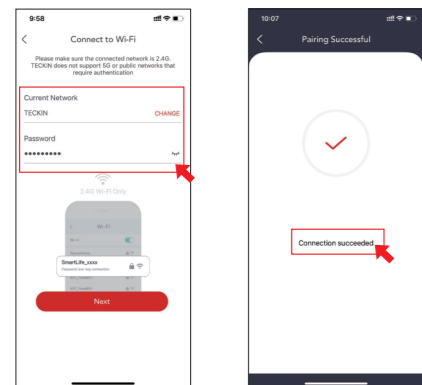
04

### Longtour Photology Co., Ltd.

202, Ying'an Building, Shangtang Intersection, Minzhi Ave., Minzhi St., Longhua New Dist., Shenzhen, China



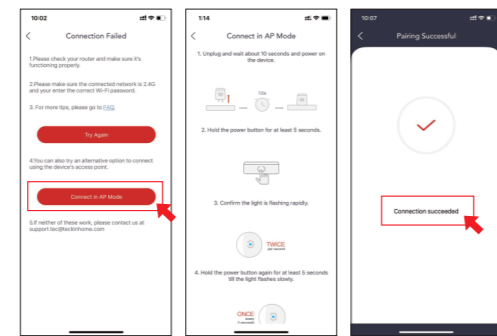
Made in China  
CONFORMS TO UL STD. 60730-1  
CERTIFIED TO CSA STD. E60730-1



### Add Devices in AP Mode

1. If the connection fails, you can try to "Connect in AP mode".
2. To access the AP mode, press the power button and hold it for more than 5 seconds. The power button must be pressed until the indicator light flashes slowly. You can configure the plug according to the operation prompts on the smart device interface.
3. When the message "Connection succeeded" appears, it means the device is paired, and will now appear on the device list in your App.

05



Now you can control your smart plug anywhere and at any time by simply using the App on your smart device [make sure your smart device and smart plug are all connected to your Wi-Fi network.] Now you have successfully added your device and you can share them with your friends or family.

### Tips

To connect the smart plug with Alexa/Google home, you must have a TECKIN App account first, and then add your TECKIN App account in Alexa/Google home.

06

### Notices

1. Please carefully check for any damage caused during the transport. In case of any damage, please contact your supplier for a replacement.
2. Please follow the instructions above carefully to keep your new product [s] in a safe and good condition.
3. Be careful to keep the plug out of the reach of children, it is not a toy.
4. Ensure that the smart plug is fully plugged in before and during the use.
5. The total power of connected devices must not exceed the stated maximum power of the plug.
6. To avoid the risk of harm, do not attempt to disassemble the plug. Do not use the item if it is damaged.

### FCC Statement

This equipment has been tested and found to comply with the limits for a Class B digital device, pursuant to part 15 of the FCC rules. These limits are designed to provide reasonable protection against harmful interference in a residential installation. This equipment generates, uses and can radiate radio frequency energy and, if not installed and used in accordance with the instructions, may cause harmful interference to radio

07

frequency energy and, if not installed and used in accordance with the instructions, may cause harmful interference to radio communications. However, there is no guarantee that interference will not occur in a particular installation. If this equipment does cause harmful interference to radio or television reception, which can be determined by turning the equipment off and on, the user is encouraged to try to correct the interference by one or more of the following measures:

- Reorient or relocate the receiving antenna.
- Increase the separation between the equipment and receiver.
- Connect the equipment into an outlet on a circuit different from that to which the receiver is connected.
- Consult the dealer or an experienced radio / TV technician for help.

To assure continued compliance, any changes or modifications not expressly approved by the party. Responsible for compliance could void the user's authority to operate this equipment. [Example use only shielded interface cables when connecting to computer or peripheral devices].

This equipment complies with Part 15 of the FCC Rules. Operation is subject to the following two conditions:

- [1] This device may not cause harmful interference.
- [2] This device must accept any interference received, including interference that may cause undesired operation.

FCC Radiation Exposure Statement:

08

The equipment complies with FCC Radiation exposure limits set forth for uncontrolled environment. This equipment should be installed and operated with minimum distance 20cm between the radiator and your body.

### IC Warning

English:

This device complies with Industry Canada licence-exempt RSS standard[s]. Operation is subject to the following two conditions: (1) this device may not cause interference, and (2) this device must accept any interference, including interference that may cause undesired operation of the device.

French:

Le présent appareil est conforme aux CNR d'Industrie Canada applicables aux appareils radio exempts de licence. L'exploitation est autorisée aux deux conditions suivantes : (1) l'appareil ne doit pas produire de brouillage, et (2) l'utilisateur de l'appareil doit accepter tout brouillage radioélectrique subi, même si le brouillage est susceptible d'en compromettre le fonctionnement."

Under Industry Canada regulations, this radio transmitter may only operate using an antenna of a type and maximum [or lesser] gain approved for the transmitter by Industry Canada. To reduce potential radio interference to other users, the

09

antenna type and its gain should be so chosen that the equivalent isotropically radiated power [e.i.r.p.] is not more than that necessary for successful communication.

Selon les règlements d'Industrie Canada, cet émetteur radio ne peut fonctionner qu'à l'aide d'une antenne d'un type et d'un gain maximal [ou moindre] approuvé pour l'émission par Industrie Canada. Pour réduire les interférences radioélectriques potentielles avec d'autres utilisateurs, le type d'antenne et son gain doivent être choisis de telle sorte que la puissance équivalente rayonnée [p.i.r.e.] ne soit pas supérieure à celle nécessaire pour une communication réussie.

### Warranty

This product carries a 24-month warranty from the purchase date. We will be happy to assist you in case of any problem with our products. Feel free to contact the TECKIN customer service at the below email address:  
[support.us@teckinhome.com](mailto:support.us@teckinhome.com)



10

1:1