

Note:

If you want to control the light with Amazon Alexa, please continue to read Page 10.

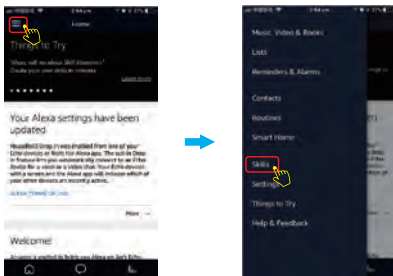
If you want to control the light with Google Home, please skip Page 10 and read Page 13 directly.

If you want to control the light with IFTTT, please read Page 15 directly.

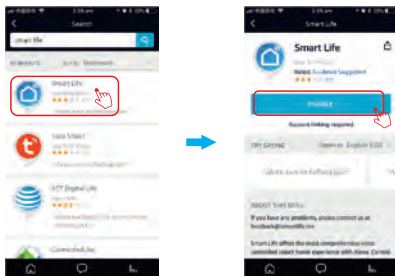
How to control the switch with Amazon Alexa?

Please make sure that your Alexa App is connected to Amazon Echo, and both work together successfully under your Wi-Fi home network.

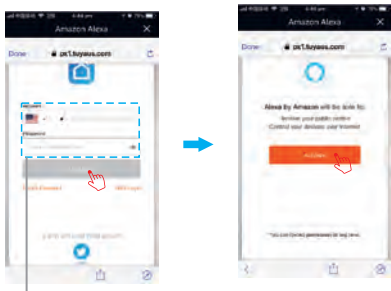
Step A: Log in your Alexa App, tap top left corner, and tap "Skills".



Step B: Type "Smart Life", find "Smart Life" from the search result and tap it to enable the skill.

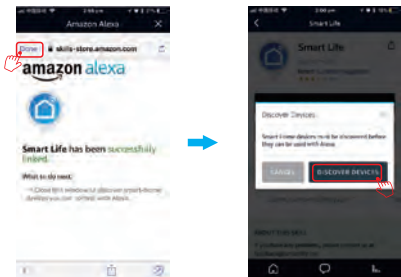


Step C: Enter your account and password of "Smart Life"App, tap "Link now", then tap "Authorize" on the next page to bind Smart Life account to Alexa.

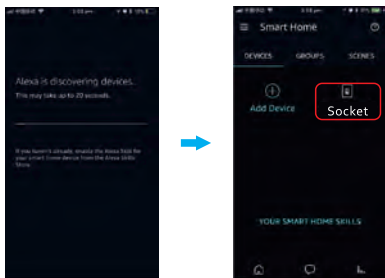


Same account and password as Smart Life App

Step D: Once your Smart Life account is successfully bounded to Alexa, the following page will pop up. Tap "Done" on top left corner, then tap "DISCOVER DEVICES" on the next page.



Step E: Wait a few seconds for Alexa to detect the switch from Smart Life App, and you will find the device named "Socket" has been paired to Alexa App from "Smart Life" App.



After Step E is done, you can now control the switch with Alexa App on this setting page.



Step F: Now you are able to control the socket via Amazon Alexa. Try these commands and see what happens by asking Alexa:

Alexa, turn on "device name"

Alexa, turn off "device name"

Note: The device name is the one you give to the socket on "Smart Life" App . In this user guide, the device is named "Socket 1".

For example:

"Alexa, turn on Socket 1",

"Alexa, turn off Socket 1" etc.

If you also want to control the socket with Google home, you can continue to read next page.

How to control the switch with Google Home?

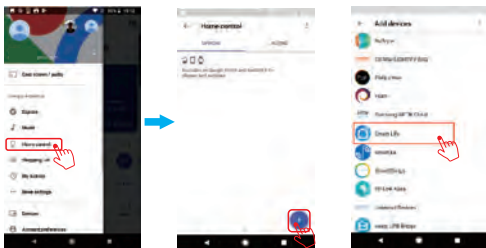
Preparation:

- Have downloaded the Google Home App. Have registered your Google Account [only support US account].
- Have paired Smart Socket with Smart life App and named with simply and easily recognizable name.
- Have finished setting up Google Home.

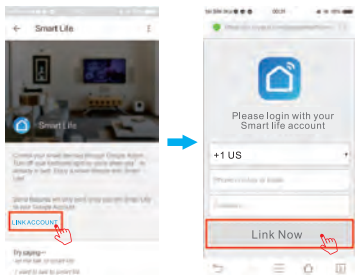
Step A: Open your Google Home App, tap "Home Control" on the left side bar page.

Step B: Tap "+" button on the button right to enter next page.

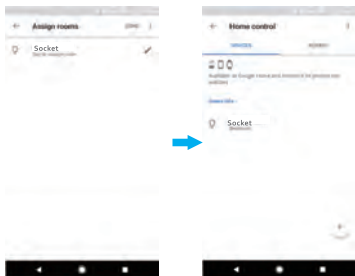
Step C: Find "Smart Life" from the side bar list.



Step D: Enter your account and password of "Smart Life"App, tap "Link now", Then tap "Authorize" on the next page to bind Smart Life account to Google Home.



Step E: You will find that Google Home has found the device named "Socket" on this page.



Step F: Now you are able to control the socket via Google Home.
Try these commands and see what happens by asking Google
ok,Google, turn on "device name"
ok,Google,turn off "device name"

Note: The device name is the one you give to the switch on "Smart Life" App . In this user guide, the device is named"Socket 1".

For example:

"ok, Google, turn on Socket 1"

"ok,Google, turn off Socket 1" etc.

How to control the switch with IFTTT?

Step A: Visit the IFTTT official website on your PC and sign in with your IFTTT account.

Note: You can also use IFTTT app and follow similar steps to connect your device to the IFTTT. In this FAQ we take the website setting method for example.

Step B : Search for "Smart Life",and then dick "Smart Life" service.

Step C: Click "Connect", then log in your Smart Life ID and then tap"Link Now".



Step D: Successfully connect your IFTTT account to your Smart Life ID. You are ready to enjoy the IFTTT service of the product now.

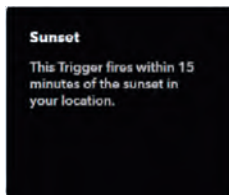
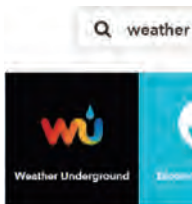
Instructions: 2 methods to use IFTTT with the product.

Method 1: On Smart Life service page, choose an existing Applet you need, turn on it and then finish the configuration.

Method 2: Create a new Applet on your own. Click " My Applets" at the top and then click "New Applet" at the right top corner of the webpage to create a new Applet.

Step A: Create a Trigger.

Tap "this" to choose a Trigger. You can search for "Weather Underground" to choose a Trigger.



We select "Sunset" as the Trigger.

Step B: Create an action. Tap "this" to choose a Trigger. You can search for "Smart Life" to choose a Smart Life Action.



We select "Turn on" of Socket as the Action in this case.

Step C: New Applet "if sunset, then turn on light switch" is created as a result.

Note: The Smart Life service can only work when create an action. You can't use the "Smart Life" as a Trigger.

FAQ

Please note when adding device:

1. Confirm device is powered on.
2. Confirm device is waiting for network configuration.
3. Confirm that device, smart phone and router are as close to each other.
4. Make sure the network function of router and smart phone are unblocked.
5. Confirm the entered router password is correct.
6. Confirm adding device is under 2.4G Wi-Fi channel. Enable the broad case and not allow to hide Wi-Fi.
7. Confirm that router's encryption method is WPA2-PSK and authentication type is AES, or both are set up as automatic.
8. Confirm that Wi-Fi name contains letters only.
9. If router's connected device reach the amount limit. Please try to turn off some devices Wi-Fi function and configure again.
10. If router enables MAC address filter, please try removing the device form MAC filter list and make sure router is allowing device to be connected.

Control device under 2G/3G/4G network?

Device and smart phone must be in the same Wi-Fi environment when adding device. After successfully adding, device can be controlled via mobile network.

How to share my device with family?

Open App, enter into "shared device", tap "add sharing" to share device with family.

How to add device?

Two methods to add device: "Default Mode" and "AP Mode". "Default Mode" is set up as default and can switch to "AP Mode"

Why can't I control the load after installing the product?

1. Please check if the wiring is correct.
2. Please check if there is a neutral line in the cassette (neutral line is required).
3. Please check if the connected load exceeds the maximum value of the device.

FCC NOTE :

This device complies with Part 15 of the FCC Rules. Operation is subjected to the following two conditions:

[1] this device may not cause harmful interference,

[2] this device must accept any interference received, including interference that may cause undesired operation . The manufacturer is not responsible for any radio or Tv interference caused by unauthorized modifications or change to this equipment. Such modifications or change could void the user's authority to operate the equipment. This equipment has been tested and found to comply with the limits for a Class B digital device, pursuant to part 15 of the FCC Rules. These limits are designed to provide reasonable protection against harmful interference in a residential installation. This equipment generates, uses and can radiate radio frequency energy and, if not installed and used in accordance with the instructions, may cause harmful interference to radio communications. However, there is no guarantee that interference will not occur in a particular installation. If this equipment does cause harmful interference to radio or television reception, which can be determined by turning the equipment off and on, the user is encouraged to try to correct the interference by one or more of the following measures:

-- Reorient or relocate the receiving antenna.

-- Increase the separation between the equipment and receiver.

-- Connect the equipment into an outlet on a circuit different from that to which the receiver is connected.

-- Consult the dealer or an experienced radio/TV technician for help.

RF warning statement:

To maintain compliance with FCC's RF exposure guidelines, this equipment should be installed and operated with a minimum distance of 20 cm between the radiator and your body.

Longtour Photology Co., Ltd.
202, Ying'an Building, Shangtang Intersection,
Minzhi Ave., Minzhi St., Longhua New Dist.,
Shenzhen, China

FC   
Made in China

