

SR40
Smart Wall Socket
User Manual

Notes Before Installation

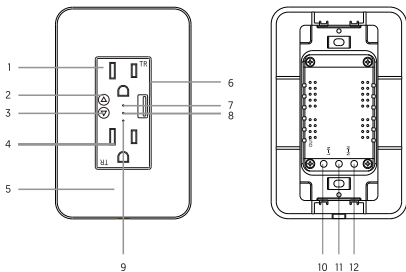
1. Wi-Fi only supports a 2.4GHz network (802.11 b/g/n).
2. Only supports one way/single pole circuit, not compatible with 3-way.
3. Neutral wire is required.
4. Basic electrical wiring knowledge or experience is required , or please consult a professional electrician.
5. Never connect the neutral wire to any switch wires.
6. ON/OFF Button also can be used as reset button, long press to reset your smart switch to factory defaults. Only do this if you are sure you want to erase all your settings.

Specifications

Type	Smart Wall Light Switch
Model	SR40
Power Supply Mode	Neutral+Live Wire
Rated Current	15A(Max)
Rated Voltage	AC110-125V~50/60Hz
Rated Power	1650W
Wireless Frequency	2.4GHZ
Wireless Standard	IEEE802.11 b/g/n

Indicator light meaning

Indicator	Status	Discription
Green	Flash Rapidly	Ready for connection {Default Mode Only}
Green	Flash Slowly {1 time every 3 S}	Ready for connection {AP Mode Only}
Green light is always on	Off	Turn the light off
Red light is always on	On	Turn the light on
Green	Flash Slowly	No Internet



- 1.Socket Hole
- 2.ON/OFF Button 1
- 3.ON/OFF Button 2
- 4.Socket Hole
- 5.Face Plate
- 6.USB Charger

- 7.Power Indicator light 1
- 8.Wi-Fi Indicator light
- 9.Power Indicator light 2
- 10.Live wire
- 11.Ground
- 12.Neutral Wire

Safety Notice

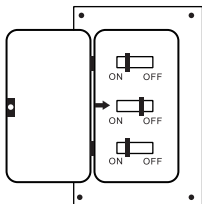
Cut off the power before installation.

Please use it only when it's installed with RCD or current leakage protector at home. A neutral wire is needed to power the switch.

Installation Guide

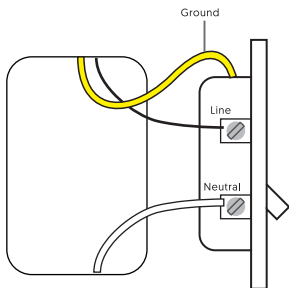
STEP.1


Turn off circuit breaker. Find your socket's control in your circuit breaker and turn it off, ensure the socket power off completely.



STEP.2

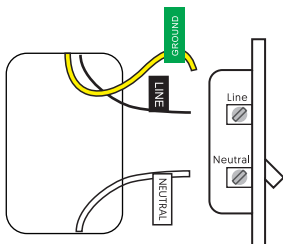
Remove the original socket in the wall cassette, find the neutral wire line wire and ground wire.



 If your original socket is also two jacks, you may find 4 or 5 wires. Please find the neutral wires, line wires and ground wires. This smart socket only needs to use the neutral wires, line wires and ground wires, other lines do not need to be connected.

STEP.3

Label your wires mark or record the corresponding line before removing the old socket.



Usually:

White represents the neutral line. Black represents the fire line.

Green or yellow or a single bare copper wire represents the ground wire.

The above is for reference only and cannot be used as a standard.

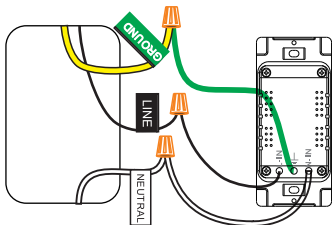
STEP.4


Install Socket

Use wire-nuts to connect the socket wires to your home wires , following the diagram.

Be careful to match line.

Then remove the stickers, screw the socket into the wall. And attach the faceplate.

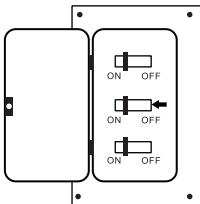


 For safety, please connect the ground wire.

STEP.5

Turn on circuit breaker. Turn on your socket's power from the circuit breaker.

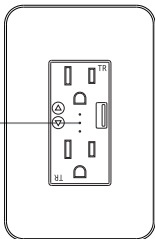
Press the socket a few times to make sure it works.



STEP.6

Check the Wi-Fi light. Tap NEXT when the Wi-Fi indicator light blinks.

Indicator light rapidly blinks
(2 times per second)



Install the “Smart Life” App

Step A: Find out “Smart Life” App in Apple App store, Google Play, or scan the QR code below and install it.



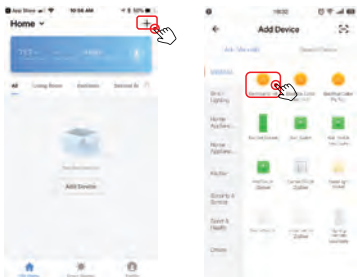
The free app “Smart Life” is compatible with mobile devices, and supports IOS8.0 above, Android 4.4 above.

Step B: Enter the register interface, input the email address/phone number for getting the verification code to register an account. Please just log in if you already have a Smart Life account.

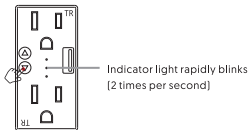
Step C: Add the switch to Smart Life App.

Note: This smart socket can only support 2.4G network and cannot work with 5.0G network, please check if your home network is 2.4G and make sure that your phone has been connected to your WI-FI home network.

[1] Tap "+" button on top right corner to add device, then tap "Electrical Outlet" to enter next page.



Default Mode(Recommend)



Step 1. Make sure the indicator blinks rapidly, if not, hold the anyone ON/OFF Button for 7 seconds for reset.



Step.2 Power on the device and confirm



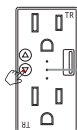
Step.3.Enter Wi-Fi password to join your network



Step.4.Wait till it is successfully connected

Note: When finish the default mode please go directly to Step.9

AP Mode(Alternative)



Indicator light slowly blinks
(1 time every 3 seconds)

Step 1. When the indicator blinks rapidly, press and hold the anyone ON/OFF button for another 7 seconds, the indicator will blinks slowly.

Step.2



Step.3





Step.4



Step.5



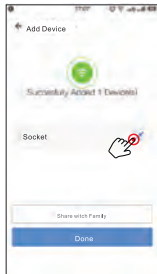
Step.6



Step.7



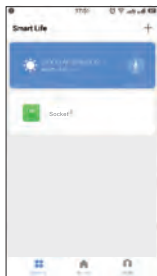
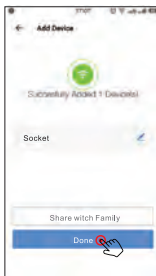
Step.8



Step.9

Step D: Give a name to the switch and tap "Done", you will find the device you've named is shown on the app homepage. Tap the device to enter the setting page.

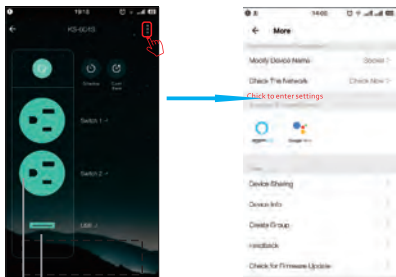
Note: The name you give to the device will be the name for voice control on Amazon Alexa or Google Home later. For example, the device is named "Socket" in this user guide.



After completing part two, you can control the socket with Smart Life App on this setting page now.

Note:

Two socket holes can be controlled separately, long press "Socket 1 or Socket 2 font" to rename



Try On/Off USB on the app to control the socket.

Try On/Off and timer functions on the app to control the socket.

Try timer function to easily set up schedule to turn on/off smart socket.

Note:

Two socket holes can be individually timed

