

**RYTH**

# **R Y T H P U R E**

User Guide

Betjeningsvejledning

Bedienungsanleitung

Guía Del Usuario

Mode D'emploi

Guida Utente

ユーザーガイド

사용 설명서

Gebruikershandleiding

Guia Do Utilizador

Руководство Пользователя

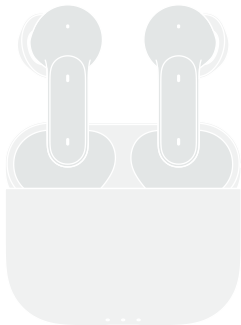
Användarhandbok

用户指南

使用者指南

# UNBOXING

Earbuds



Charging case



Eartips (Silicone & Foam)



USB cable

# CONNECT

## First time connecting

Once removed from the charging case, the earbuds will power on and enter pairing mode, the light indicator on both earbuds will start to blink blue.

### 初次开机

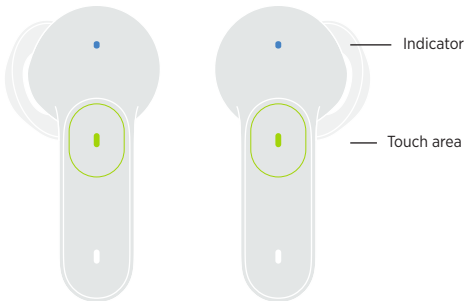
打开盒盖取出耳机，耳机会自动开机进入蓝牙配对状态，耳机蓝灯闪烁。

## Connect with other devices

Tap and hold the Bluetooth button for 8 seconds, until the Bluetooth indicator on each earbud blinks blue.

### 连接新设备

同时触摸左右耳8秒，直到双耳指示灯闪烁蓝色，耳机进入蓝牙配对状态。



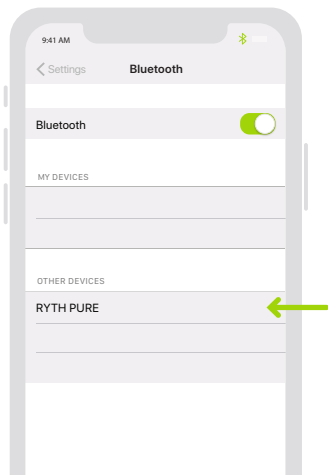
# CONNECT

## 与手机配对

开启手机蓝牙，搜索蓝牙设备“RYTH PURE”，点击即可连接

### Turn on Bluetooth

Turn on Bluetooth of the device, tap “RYTH PURE” from the list to connect.



# INSERT EARBUDS

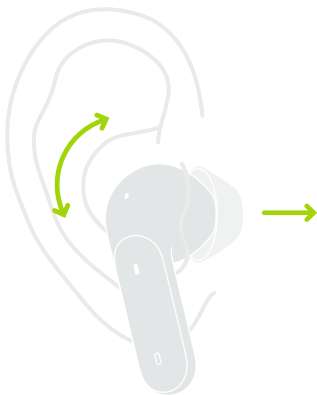
## 旋转锁紧

戴入耳机后，旋转耳机调节到舒适的位置。使用泡棉耳塞时，请先挤压泡棉耳塞，将其卷成一个细长的圆柱体再戴入。

## Twist to adjust

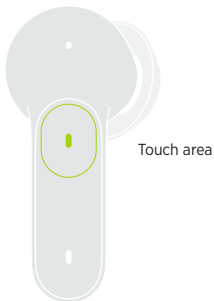
Place the earbuds in your ear, twist to make it fit comfortably.

When using the foam tips, squeeze down the foam tip and roll the tip into a thin, round cylinder before put on.



# TAP OPERATIONS

- ● **Double-tap** to answer / hang up a call,  
play / stop music  
**双击** 接/挂电话, 播放/暂停音乐
- ● ● **Triple-tap** to active Siri / Google Assistant /  
other voice assistant  
**三击** 激活语音助手
- **Tap and hold** for 3 seconds to switch between Active  
Noise Cancellation and Transparency Mode  
**长按3秒** 切换主动降噪和环境音模式
- **Tap and long hold** for 8 seconds to pair with new devices  
**长按8秒** 与新设备配对



# DISCONNECT

**取消耳机连接:**耳机放入充电盒中, 会自动与手机断开连接。

**关机:**耳机放入充电盒中, 并关上盒盖, 耳机自动关机。

**重新连接:**将耳机从充电盒中取出, 耳机会自动与手机回连。

**Disconnect:** Place earbuds back to case to disconnet from the device.

**Power off:** While earbuds in case, close the lid to power off.

**Reconnect:** Earbuds reconnect with paried device while taking out from case.





# CHARGE

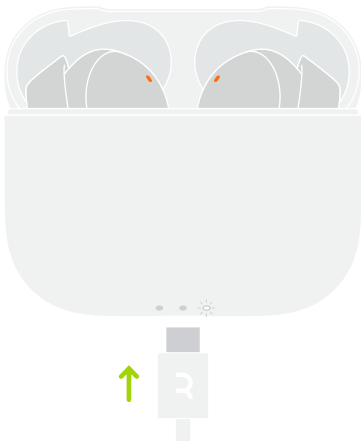
## Charge

RYTH PURE charges while in the case.

### 充电

将耳机放入充电盒后，它们就会开始充电。使用USB type-c 接口为充电盒充电。

- Earbuds Charging  
耳机充电未滿
- Earbuds Fully Charged  
耳机充电已滿
- ● ☀ 充电盒充电中  
Case Charging



# REGISTER ONLINE

## **在线注册**

通过[www.ryth.io](http://www.ryth.io) 进行在线注册、即可获得产品和软件更新方面的重要信息、还有 RYTH 发布的重要新闻和折扣信息。

## **Register Online**

Register online at [www.ryth.io](http://www.ryth.io) to receive important information about product and software updates – and to get exciting news and offers from RYTH.

# SAFETY AND HANDLING

Handle Ryth Pure and case with care. They contain sensitive electronic components, including batteries, and can be damaged, impair functionality, or cause injury if dropped, burned, punctured, crushed, disassembled, or if exposed to excessive heat or liquid. Don't use damaged Ryth Pure or case. Wipe off sweat from the earbuds and the charging case before charging. Remove headphones immediately if you experience a warming sensation. Don't attempt to alter this product or replace the batteries yourself.

The headset can produce high-volume and high-pitched sound. Exposure to such sounds may cause permanent hearing loss. The volume level may vary depending on the conditions of the mobile phone you are using, its reception status and volume settings, and the environment. Do not use the earbuds at high volume for an extended period. To avoid hearing loss, use headphones at a comfortable and moderate volume. Turn down the volume of your device first before putting on the earbuds, and then gradually increase the volume to a comfortable level.

If you use the headset to make a call while driving, you should use it with caution and follow the applicable laws regarding the use of mobile phones and headsets. Some local regulations have specific restrictions on the use of such products while driving, such as the configuration of a single earpiece. Do not use the headset for other purposes while driving.

If you use headphones when doing activities that require concentration, you should pay attention to the safety of yourself and others, such as when riding a bicycle or walking on or near roads, construction sites, or railways. You should remove the headphones or adjust the volume to ensure that you can hear the surrounding sounds, including alarm and warning signals.

Ryth Pure and case contain components and radios that emit electromagnetic fields. Ryth Pure and case also contain magnets. These electromagnetic fields and magnets may interfere with pacemakers, defibrillators, or other medical devices. Maintain a safe distance of separation between your medical

device and Ryth Pure and case. Consult your physician and medical device manufacturer for information specific to your medical device. Stop using Ryth Pure and case if you suspect they are interfering with your pacemaker, defibrillator, or any other medical device.

Avoid prolonged skin contact with a device, its power adapter, the charging cable and connector, or a wireless charger when plugged into a power source, because it may cause discomfort or injury. For example, while the case is charging using the charging cable and a power adapter or a wireless charger plugged into a power source, don't sit or sleep on the case, charging cable, connector, power adapter, or wireless charger, or place them under a blanket, pillow, or your body. Take special care if you have a physical condition that affects your ability to detect heat against your body.

Ryth Pure, the case, and small parts included with Ryth Pure may present a choking hazard or cause other injury to small children and pets. Keep them away from small children and pets. The earbuds and the case contain lithium-ion batteries, and may be hazardous if swallowed. If ingested, seek immediate medical attention.

For support and troubleshooting information, user discussion boards, and the latest Ryth news, go to [www.ryth.io](http://www.ryth.io)

## REGULATORY COMPLIANCE

### **FCC Compliance Statement**

Note: This equipment has been tested and found to comply with the limits for a Class B digital device, pursuant to part 15 of the FCC Rules. These limits are designed to provide reasonable protection against harmful interference in a residential installation. This equipment generates uses and can radiate radio frequency energy and, if not installed and used in accordance with the instructions, may cause harmful interference to radio communications. However, there is no guarantee that interference will not occur in a particular installation. If this equipment does cause harmful interference to radio or television reception, which can be determined by turning the equipment off

and on, the user is encouraged to try to correct the interference by one or more of the following measures:

Reorient or relocate the receiving antenna.

Increase the separation between the equipment and receiver.

Connect the equipment into an outlet on a circuit different from that to which the receiver is connected.

Consult the dealer or an experienced radio/TV technician for help

Changes or modifications not expressly approved by the party responsible for compliance could void the user's authority to operate the equipment.

This device complies with Part 15 of the FCC Rules. Operation is subject to the following two conditions:

(1) this device may not cause harmful interference, and (2) this device must accept any interference received, including interference that may cause undesired operation.

### **ISED Canada Compliance**

This device contains licence-exempt transmitter(s)/receiver(s) that comply with Innovation, Science and Economic Development Canada's licence-exempt RSS(s). Operation is subject to the following two conditions:

(1) This device may not cause interference.

(2) This device must accept any interference, including interference that may cause undesired operation of the device.

L'émetteur/récepteur exempt de licence contenu dans le présent appareil est conforme aux CNR d'Innovation, Sciences et Développement économique Canada applicables aux appareils radio exempts de licence. L'exploitation est autorisée aux deux conditions suivantes :

(1) L' appareil ne doit pas produire de brouillage;

(2) L' appareil doit accepter tout brouillage radioélectrique subi, même si le brouillage est susceptible d' en compromettre le fonctionnement.

Country	Certification Number
Canada	IC: 26198-RP0023
United States (Including Puerto Rico)	FCC ID: 2AWNRRP0023

## 中国

有害物质	零部件		
	电路板	附件	电池
铅 (Pb)	X	0	X
汞 (Hg)	0	0	0
镉 (Cd)	0	0	0
六价铬 (Cr, VI)	0	0	0
多溴联苯 (PBB)	0	0	0
多溴二苯醚 (PBDE)	0	0	0

0: 表示该有害物质在该部件所有均质材料中的含量均在  
GB/T 26572-2011 规定的限量要求以下。

X: 表示该有害物质至少在该部件的某一均质材料中的含量超出  
GB/T 26572-2011 规定的限量要求。

根据中国电子行业标准 SJ/T 11364-2014 和相关的中国  
政府法规, 本产品及其某些内部或外部组件上可能带  
有环保使用期限标识。取决于组件和组件制造商, 产  
品及其组件上的使用期限标识可能有所不同。组件上  
的使用期限标识优先于产品上任何与之相冲突的或  
不同的环保使用期限标识。



© 2020 Ryth Ltd. All rights reserved.

The Bluetooth® word mark and logos are registered trademarks owned by Bluetooth SIG, Inc.  
and any use of such marks by Ryth Ltd. is under license. Printed in XXXX. 034-03622-A