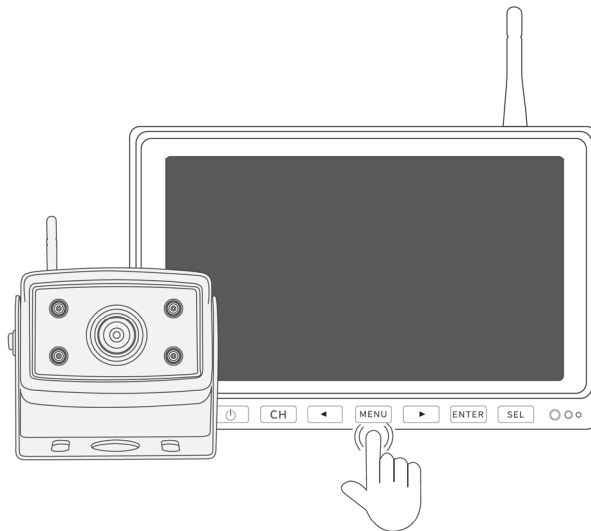


WIRELESS BACKUP CAMERA SYSTEM

SWD-VK-TB703+607

User Manual / Installation Instructions



VEHICLE SAFETY SOLUTIONS

Before installation please read the manual

What's in the Box?

01



02



03



04



05



06



07



08



09



10



11



NOTE: The contents included may be different based on the kit you purchased. Please take the actual product as standard.

01. 7" monitor

05. U-shaped bracket

09. Antenna

02. HD camera

06. Screw

10. Accessories

03. Sunshade

07. Power cable

11. Sticker bracket+glue

04. Car charger

08. Manual

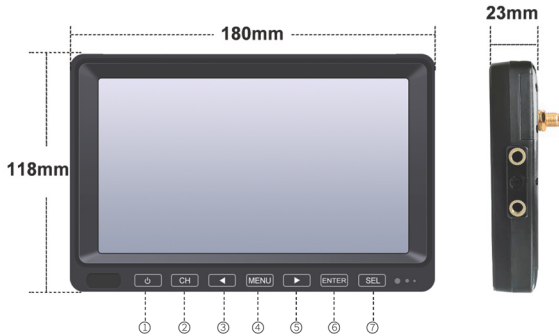
Introduction

Please read all of the installation instructions carefully before installing the product. Improper installation will void manufacturer's warranty.

Thank you very much for purchasing a Rear View Backup Camera System. With this manual you will be able to properly install and operate the unit.

The Backup Camera System is intended to be installed as a supplement aid to your standard rear view mirror that already exists in your vehicle. The Backup Camera System should not be used as a substitute for the standard rear view mirror or for any other mirror that exists in your vehicle. In some jurisdictions, it is unlawful for a person to drive a motor vehicle equipped with a TV viewer or screen located forward of the back of the driver's seat or in any location that is visible, directly or indirectly, to the driver while operating the vehicle.

Monitor Operation



- ① Use this button to turn the monitor On and Off
- ② Switch channel
- ③ 1) Enter the menu and move to the left 2) . After the car ruler is turned on, adjust the car ruler
- ④ MENU
- ⑤ 1) Enter the menu and move to the right 2) . After the car ruler is turned on, select the mode M/W/H
- ⑥ 1) Enter 2) . Keep SD Card, Start /Stop Recording
- ⑦ Car ruler



Open the SD card slot on the monitor back with a screwdriver,insert SD card

It is recommended to use high-speed TF card of class 10 or above.(Less than 256G)

Plug in the card to start recording(“ENTER” to turn on/off recording)

- REC

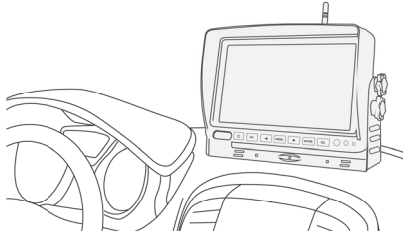
Sector bracket installation method



Installation Diagram

➤ Monitor Installation

Choose a monitor location in your vehicle that does not block your view and complies with local laws for safe driving. Do not place in an area where it might interfere with driving.

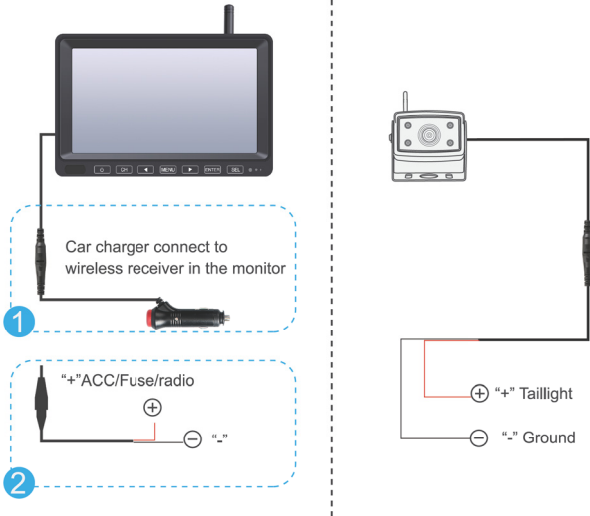


➤ Camera Installation

Suitable Installation Position

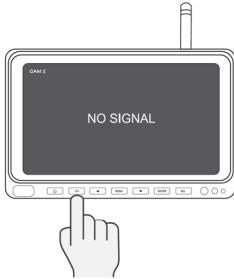


Connection method



Note: Of connecting power directly to battery, the cameras always ON and therefore candrain battery. Therefore it is recommended to connect power to an ignition switched accessory power source.

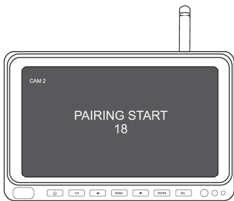
Pairing the Camera and Monitor



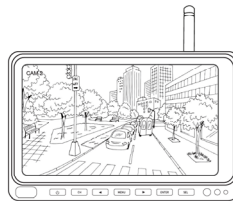
1. Select the channel to be pairing



2. Enter the menu and select pairing



3. Short press enter to start pairing



4. Waiting for matching and drawing successfully

NOTE: when you need pairing, please confirm the circuit is properly connected and powered. If you need to pairing multiple cameras, please switch to the corresponding channel.

Specifications


Power Supply	DC9 to 40V
Wireless Frequency	2.4 GHz
Wireless Range	500m(open area)
Delaying Time	<200ms
Operating temperature	-20°C ~ 80°C

CAMERA


Image Sensor	1/3 inch
Waterproof Rating	IP68
View Angle	127°[H] 170°[D]
Camera Pixel	1000TVL

MONITOR


LCD Size	7 inch IPS
Resolution	1024(H) x 600(V)
Contrast	500:1
Brightness	600cd/m ²
Response Time	25ms
Power Consumption	<500mA

 Waterproof
Shockproof



 Touch button



 Hot and
moisture resistant



Troubleshooting

Problem	Solution
Monitor Won't turn on	Check the cigarette lighter has 12-24V DC Output
	Check the fuse in the Cigarette socket adapter
Camera and Monitor won't pair	Check if the camera is receiving power
	Make sure to follow the instructions to operate the Pairing
Weak Signal	Check if the camera and monitor antennas are installed
	Distance between camera and monitor is too great. Reduce distance between camera and monitor
	Large dense objects could be obscuring the signal. If possible, move the objects
	Interference from overhead power lines may be affecting the signal
	Try unpairing and pairing
Night Vision is poor	The night sensor on the camera may be dirty or obstructed
	Ensure the camera is installed at least 2 inches away from rear lights
Dark Picture	Check whether brightness and contrast are adjusted correctly

FCC Warning Statement

Changes or modifications not expressly approved by the party responsible for compliance could void the user's authority to operate the equipment. This equipment has been tested and found to comply with the limits for a Class B digital device, pursuant to Part 15 of the FCC Rules. These limits are designed to provide reasonable protection against harmful interference in a residential installation. This equipment generates uses and can radiate radio frequency energy and, if not installed and used in accordance with the instructions, may cause harmful interference to radio communications. However, there is no guarantee that interference will not occur in a particular installation. If this equipment does cause harmful interference to radio or television reception, which can be determined by turning the equipment off and on, the user is encouraged to try to correct the interference by one or more of the following measures:

- - Reorient or relocate the receiving antenna.
- - Increase the separation between the equipment and receiver.
- - Connect the equipment into an outlet on a circuit different from that to which the receiver is connected.
- - Consult the dealer or an experienced radio/TV technician for help.

This device complies with part 15 of the FCC Rules. Operation is subject to the following two conditions: (1) This device may not cause harmful interference, and (2) this device must accept any interference received, including interference that may cause undesired operation.