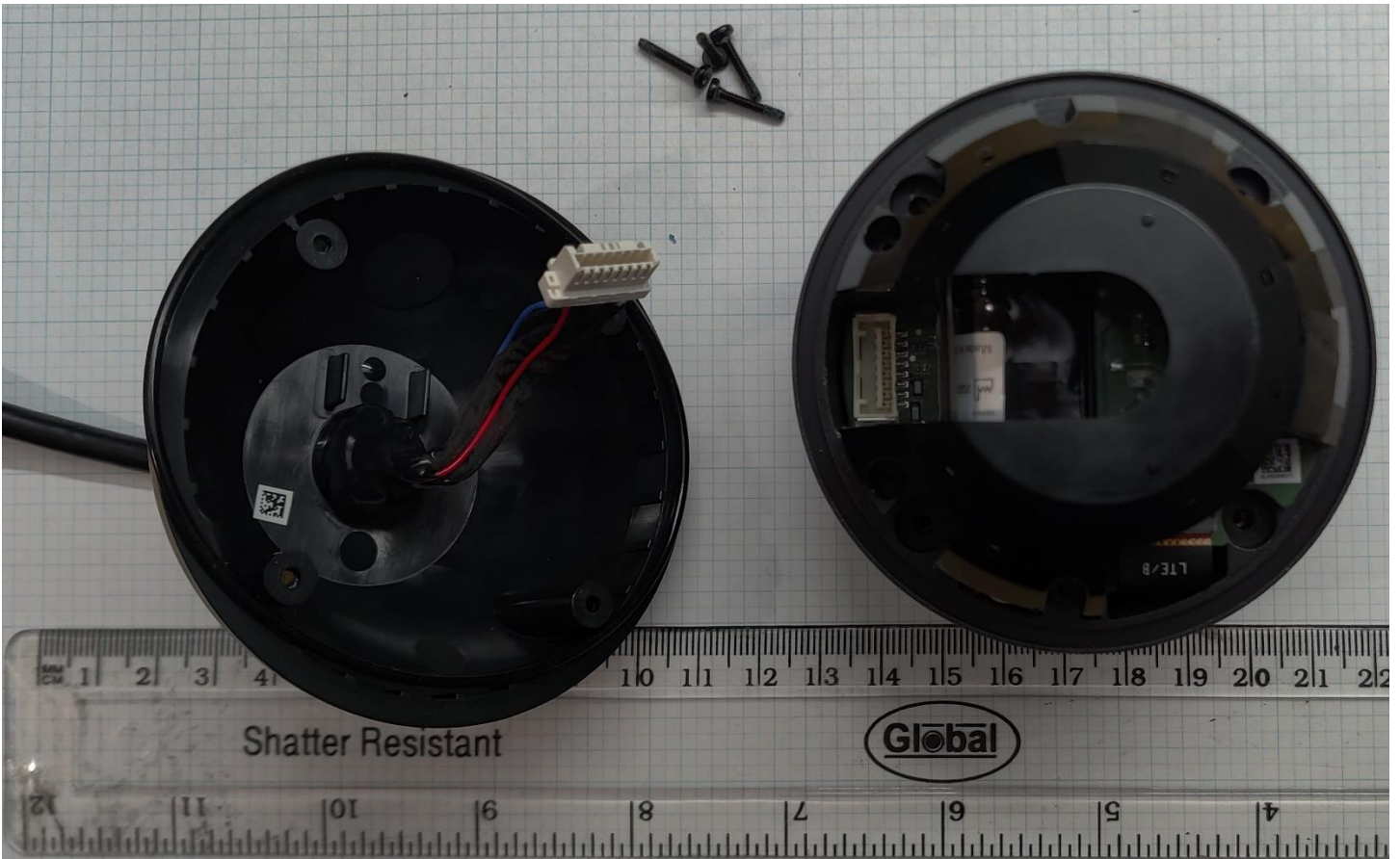
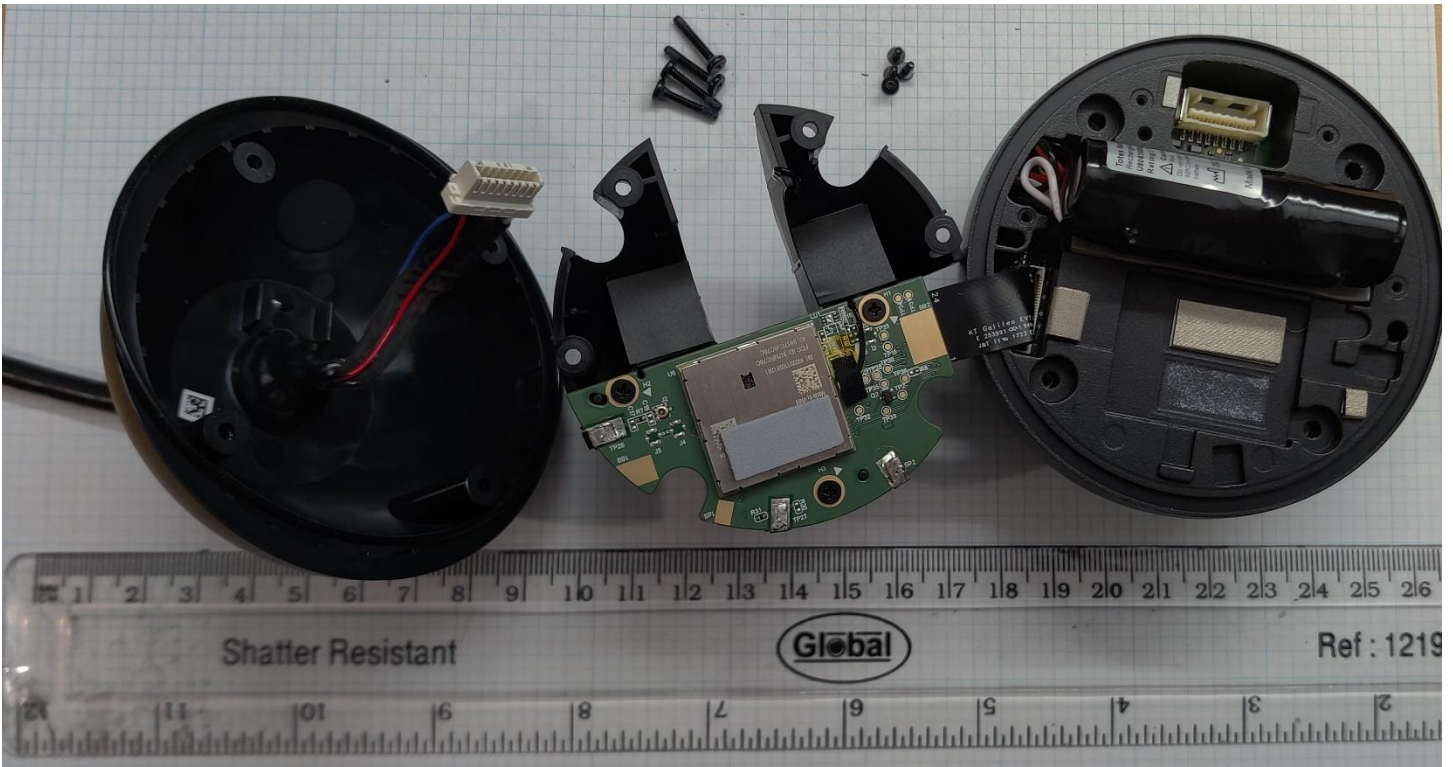


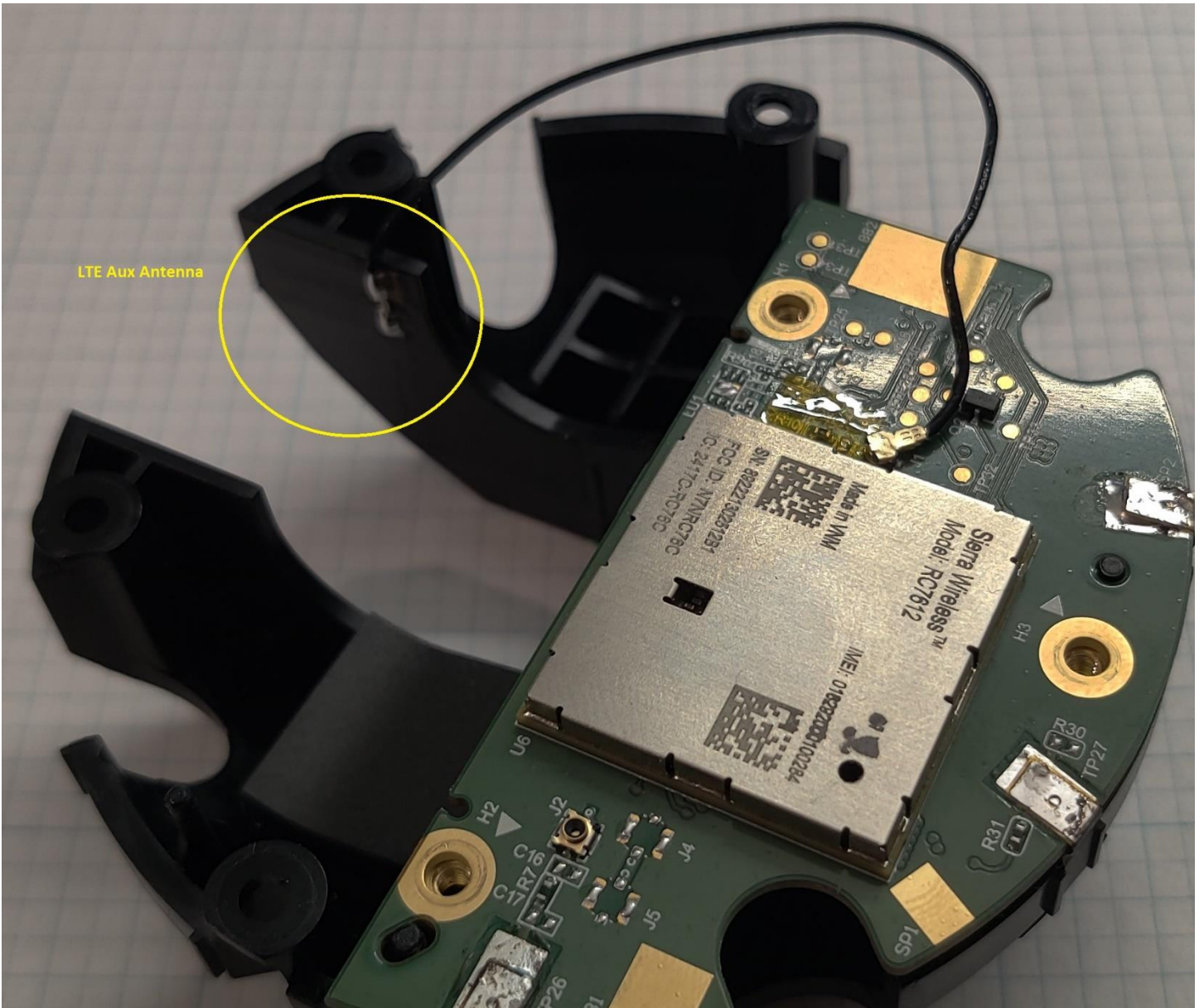
01 - Rear Cover Removed, cable unplugged



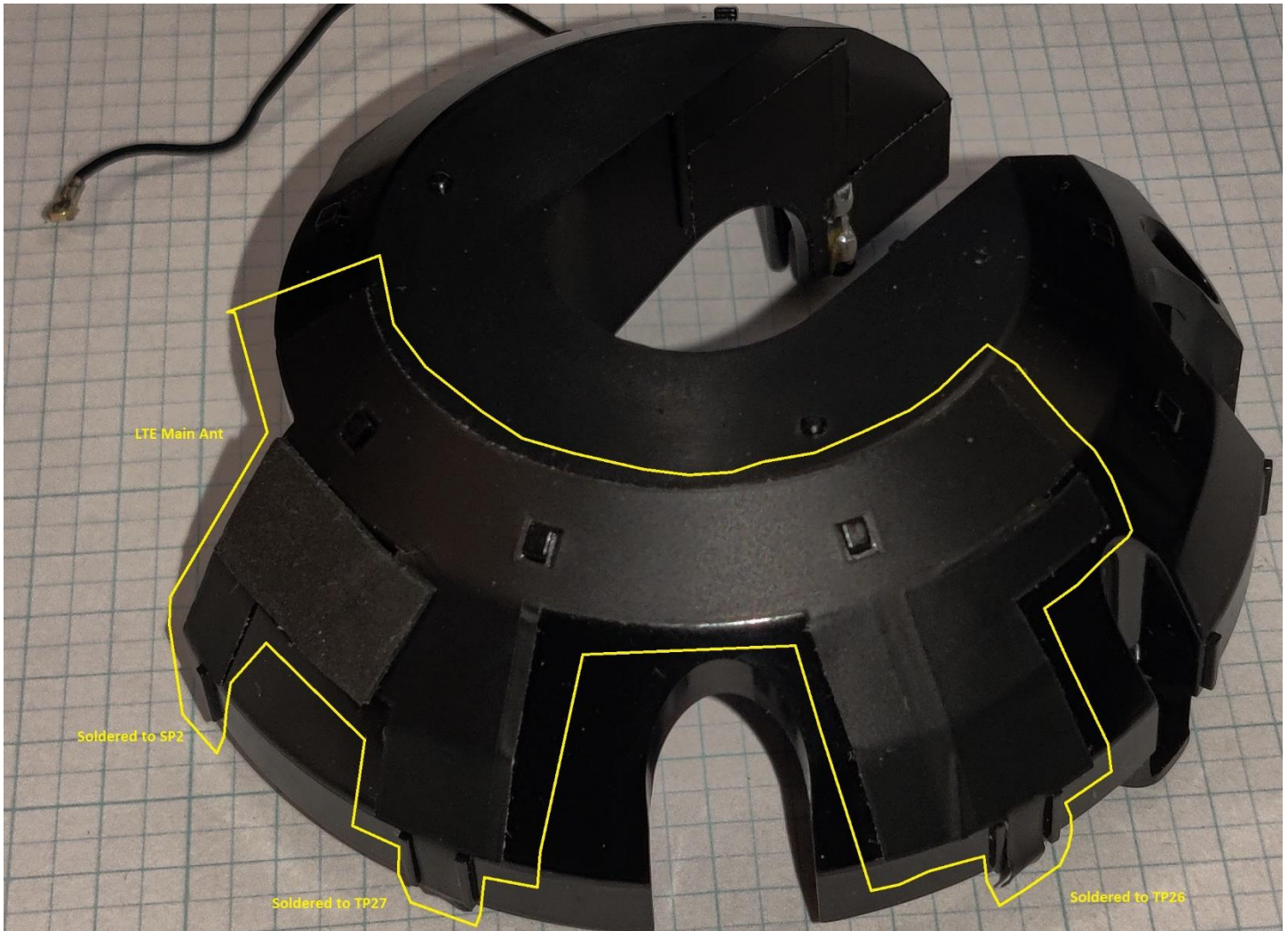
02 - LTE board and antenna carrier removed



02b - LTE antenna carrier with LTE Aux highlighted



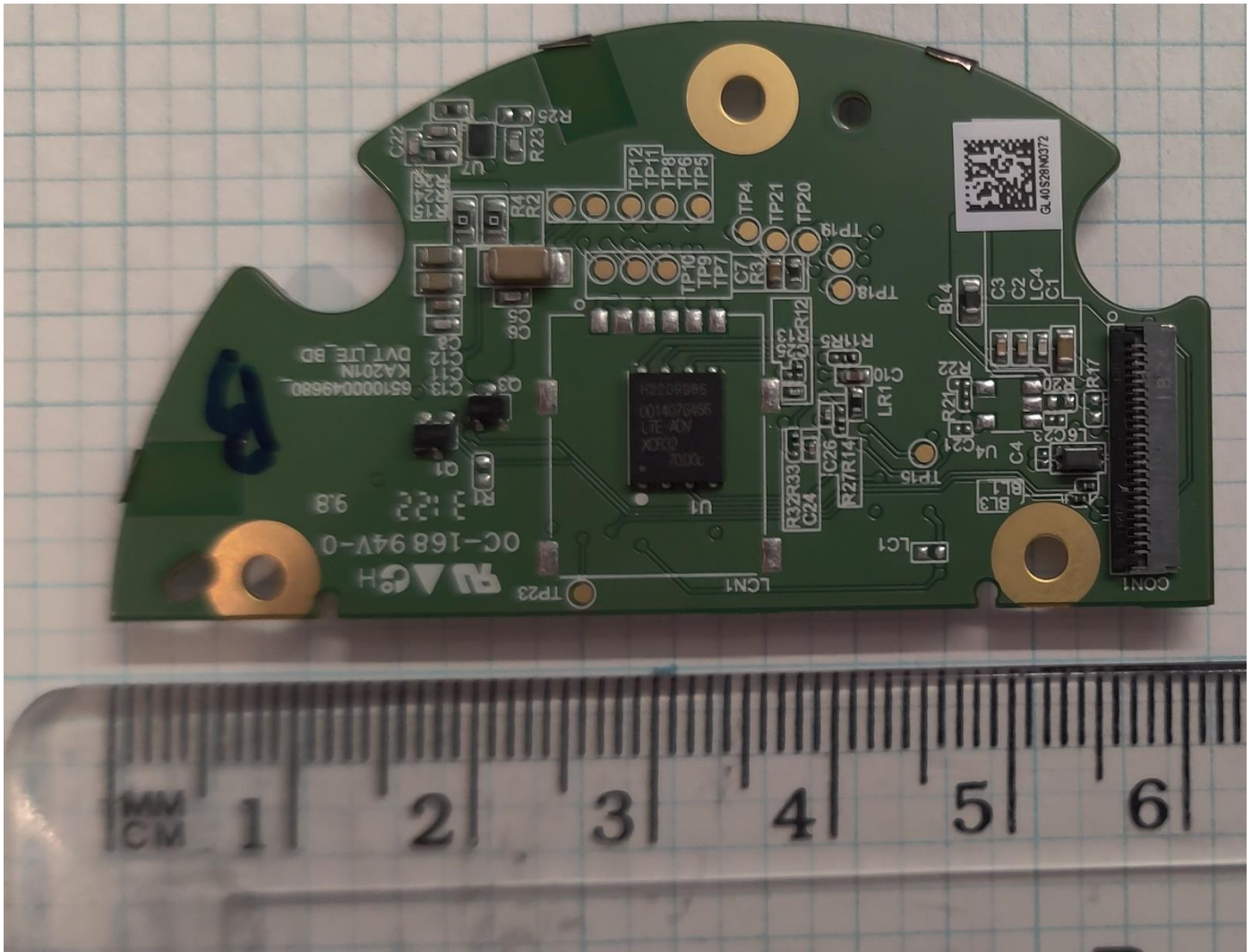
02c - LTE antenna carrier with LTE Main highlighted



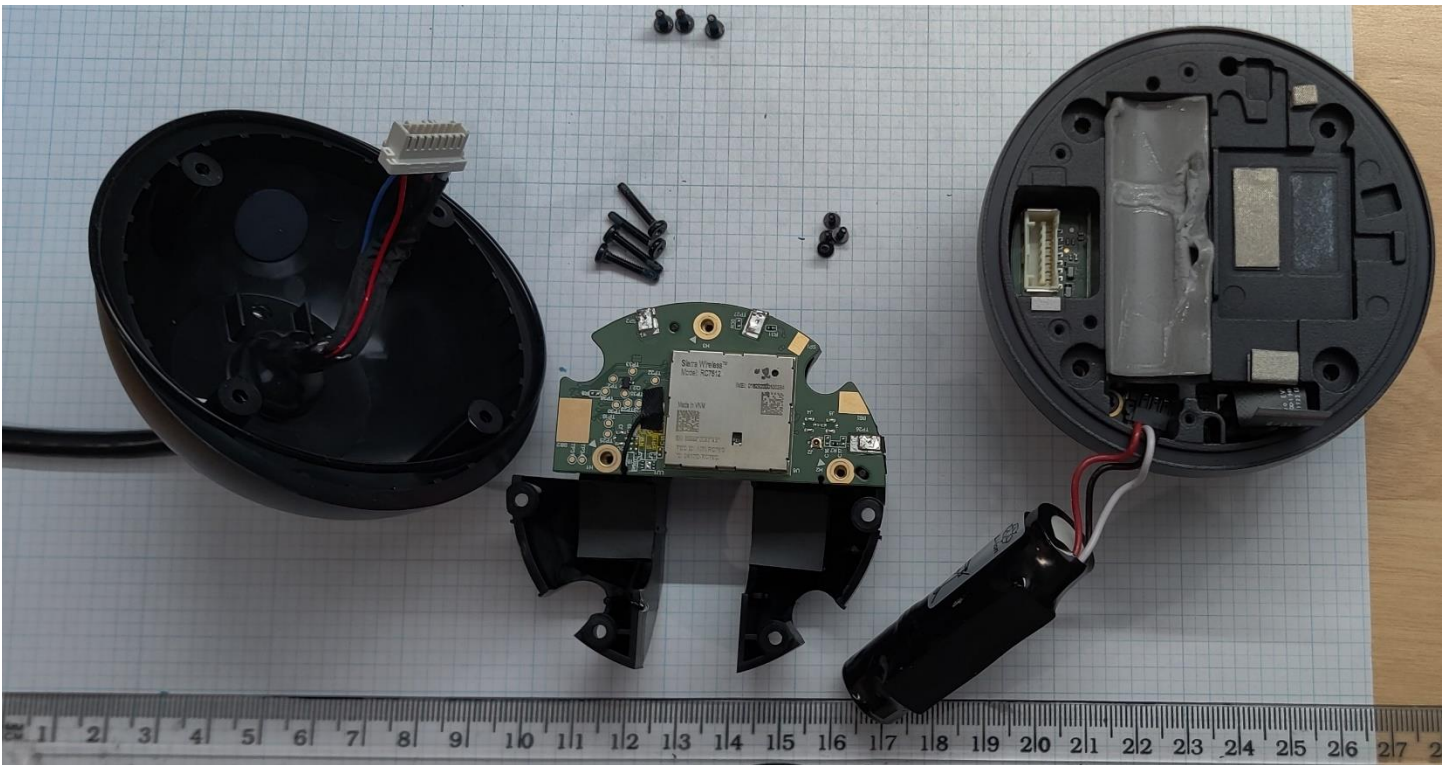
03 - LTE board close-up, front



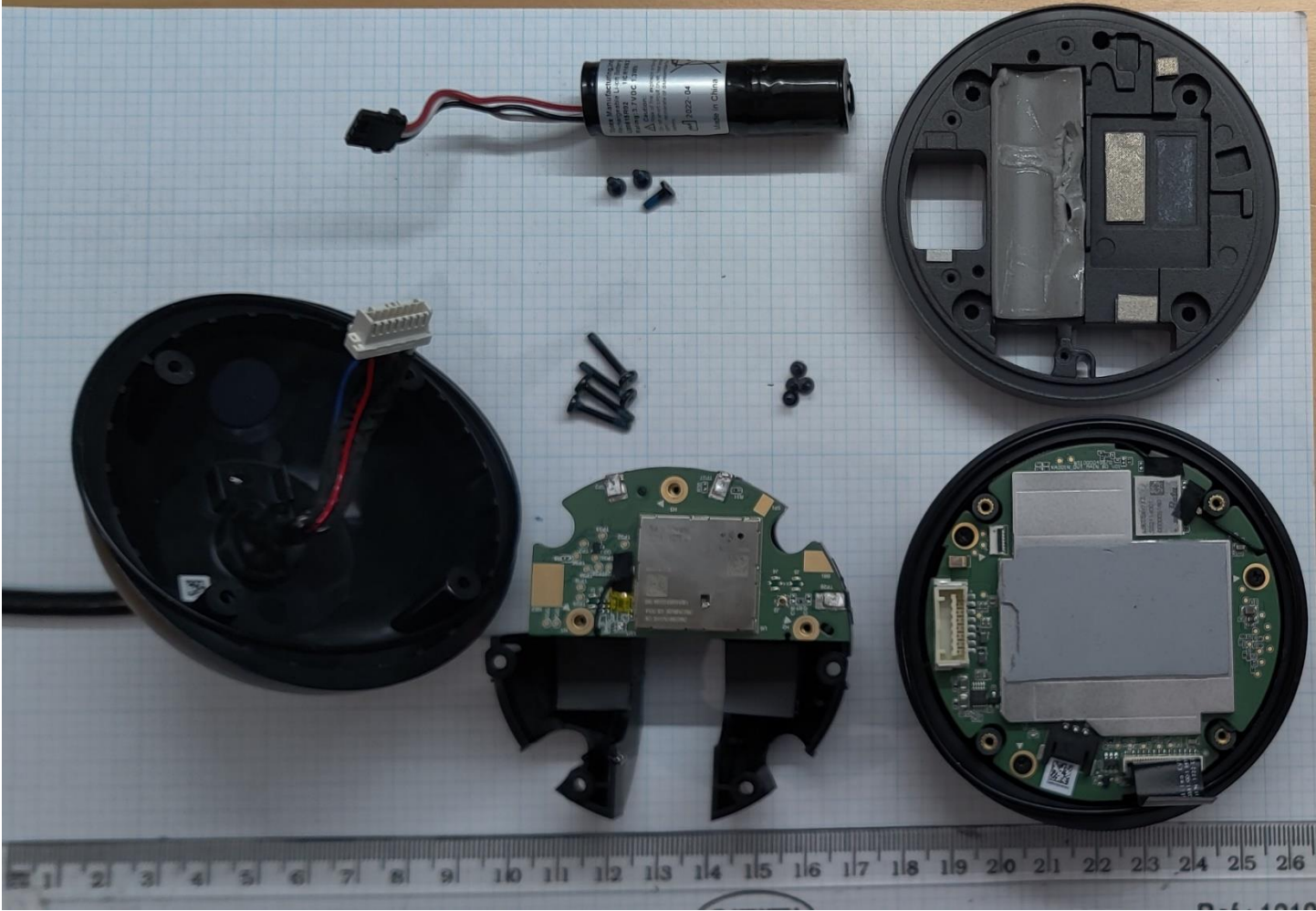
04 - LTE board close-up, rear



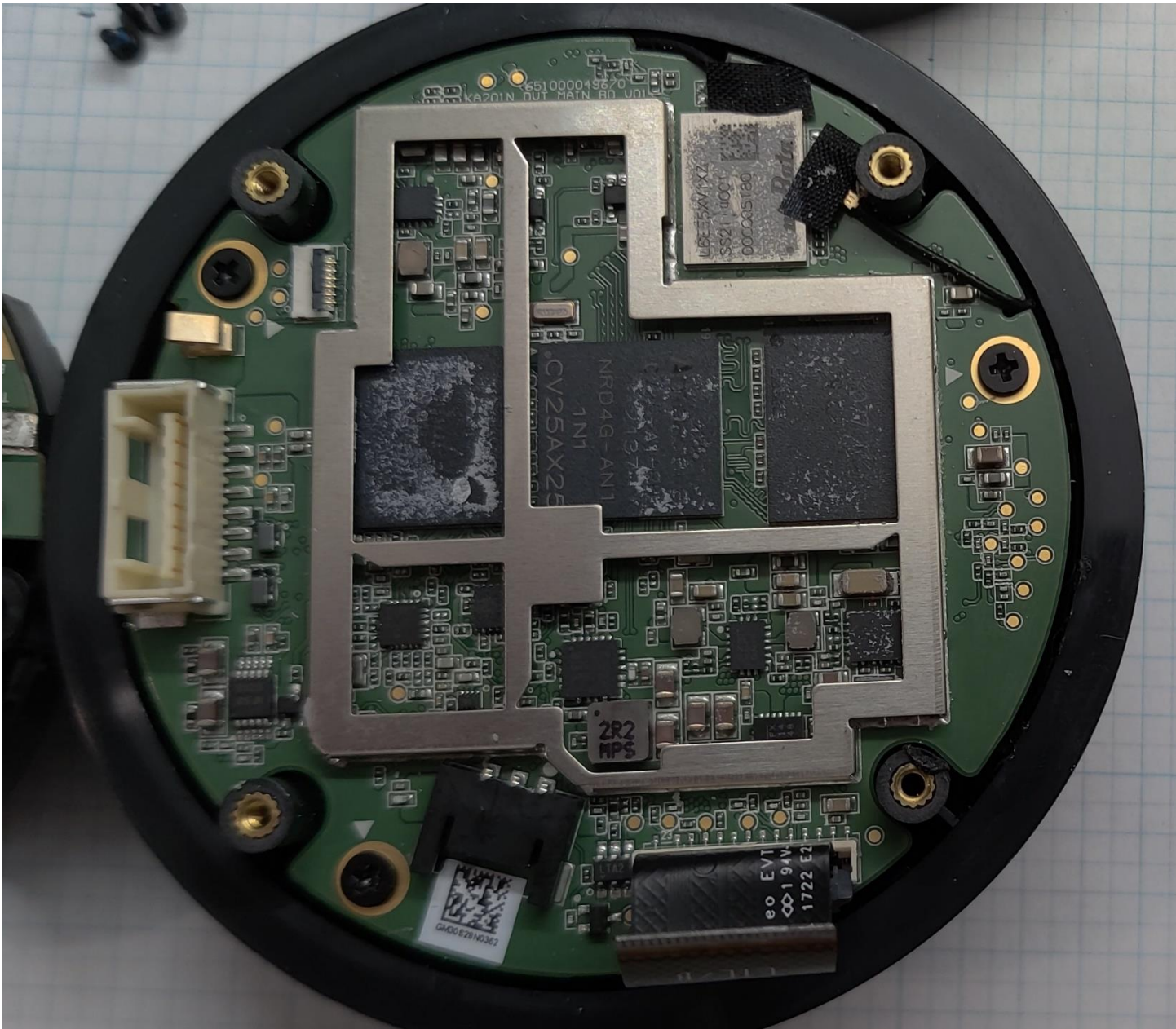
05 - Battery removed from mid-frame



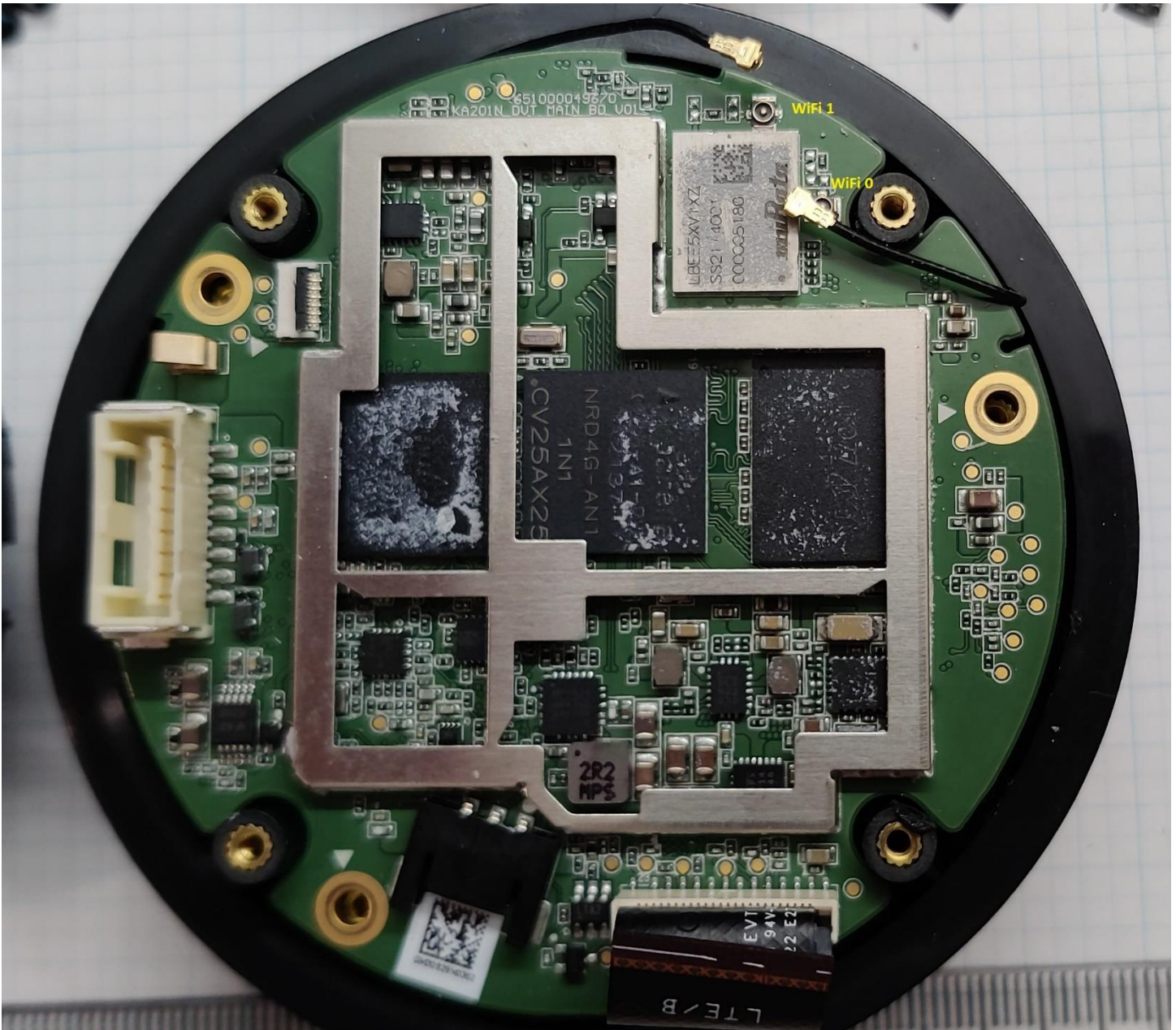
06 - mid-frame removed



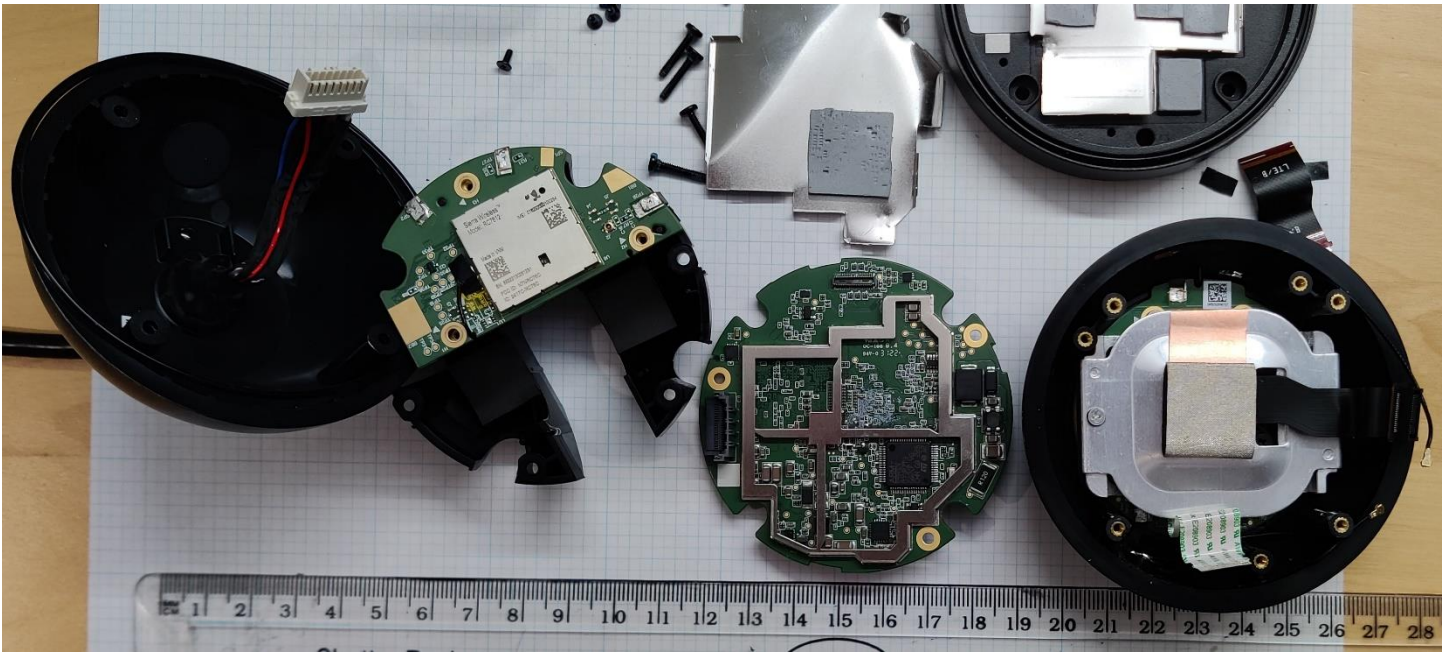
07 - Main board close-up without shields, front



08 - Main board close-up without shields, bt\_wifi antennas disconnected

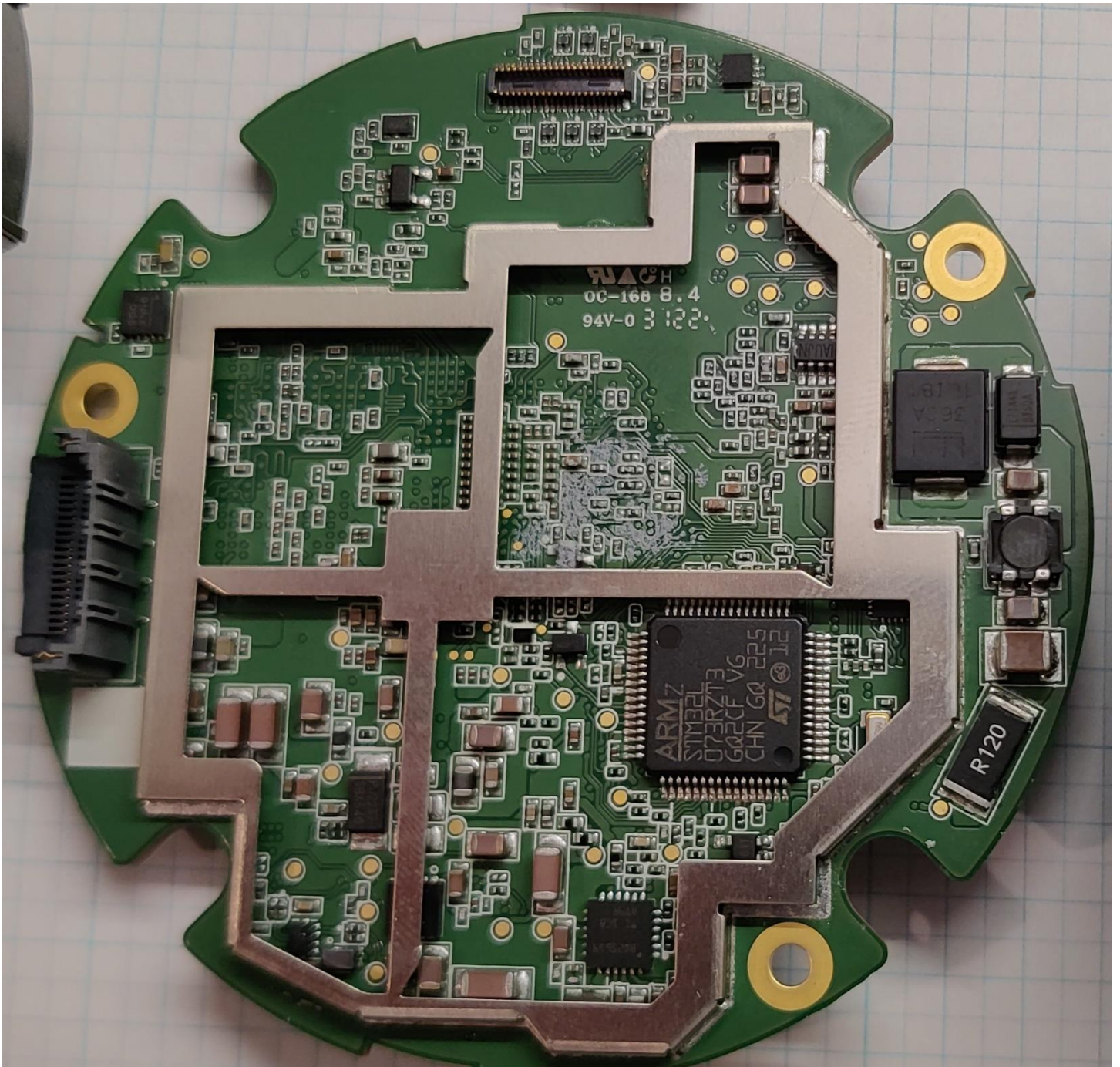


09 - Main board removed

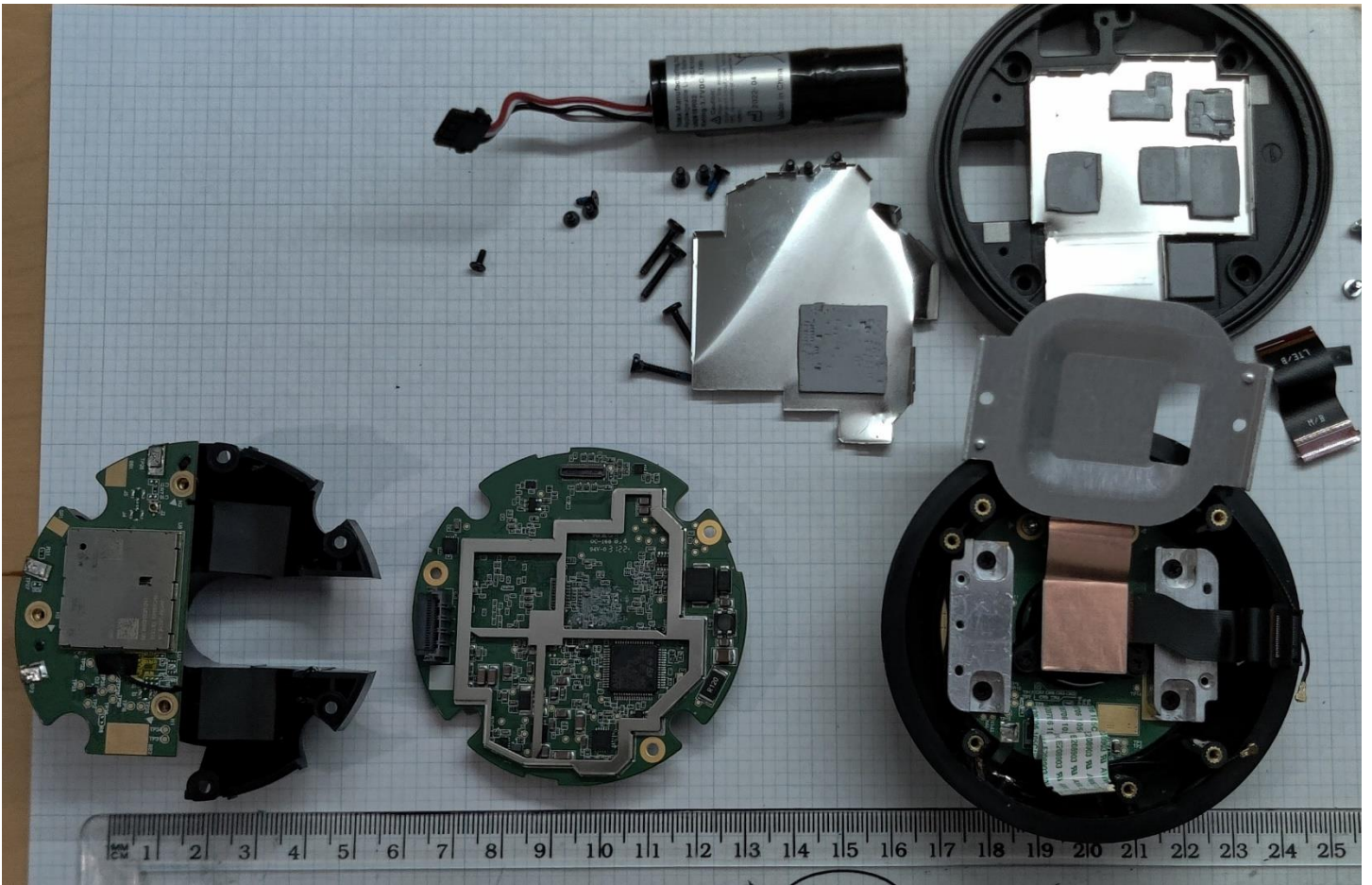




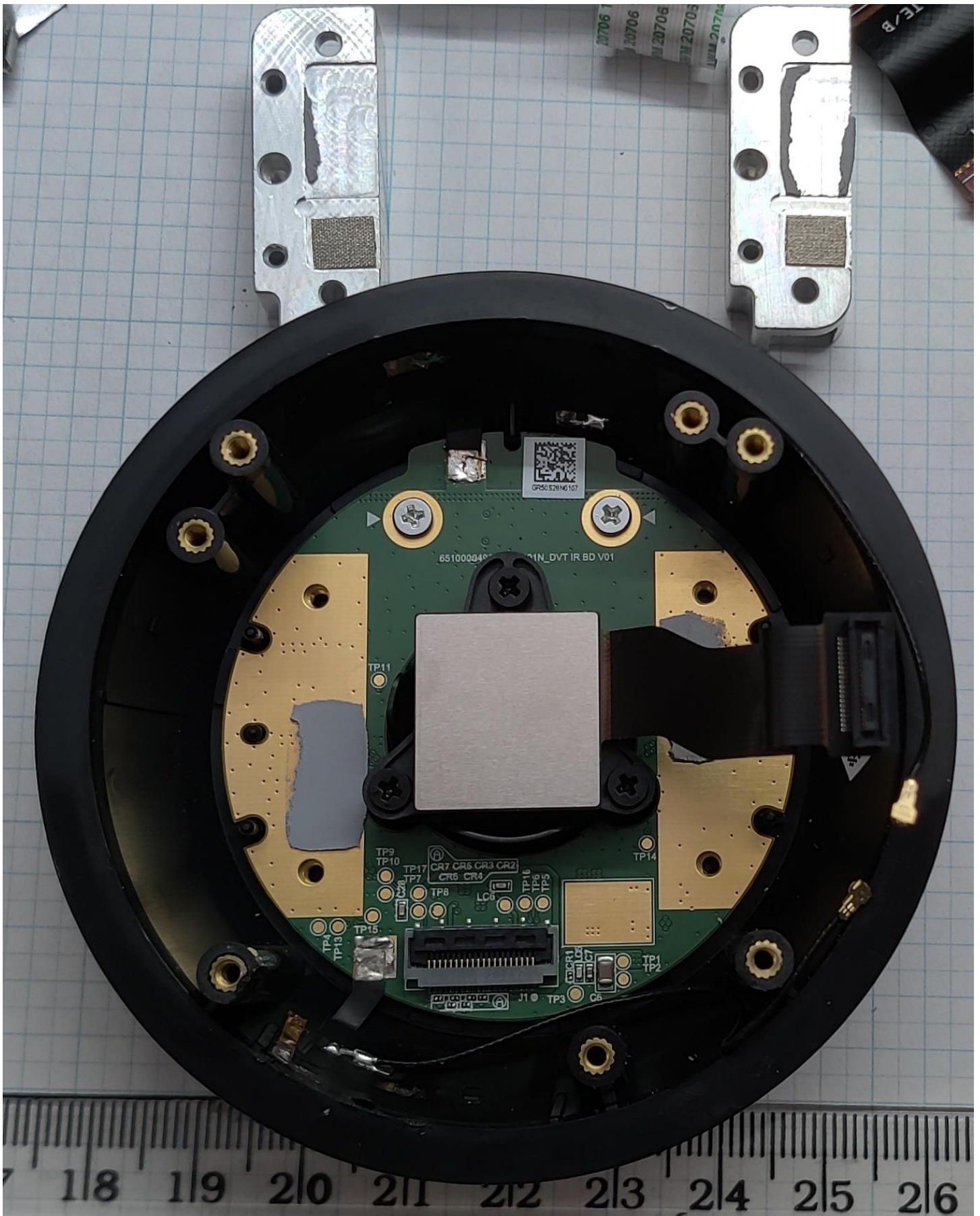
10 - Main board close-up without shields, rear



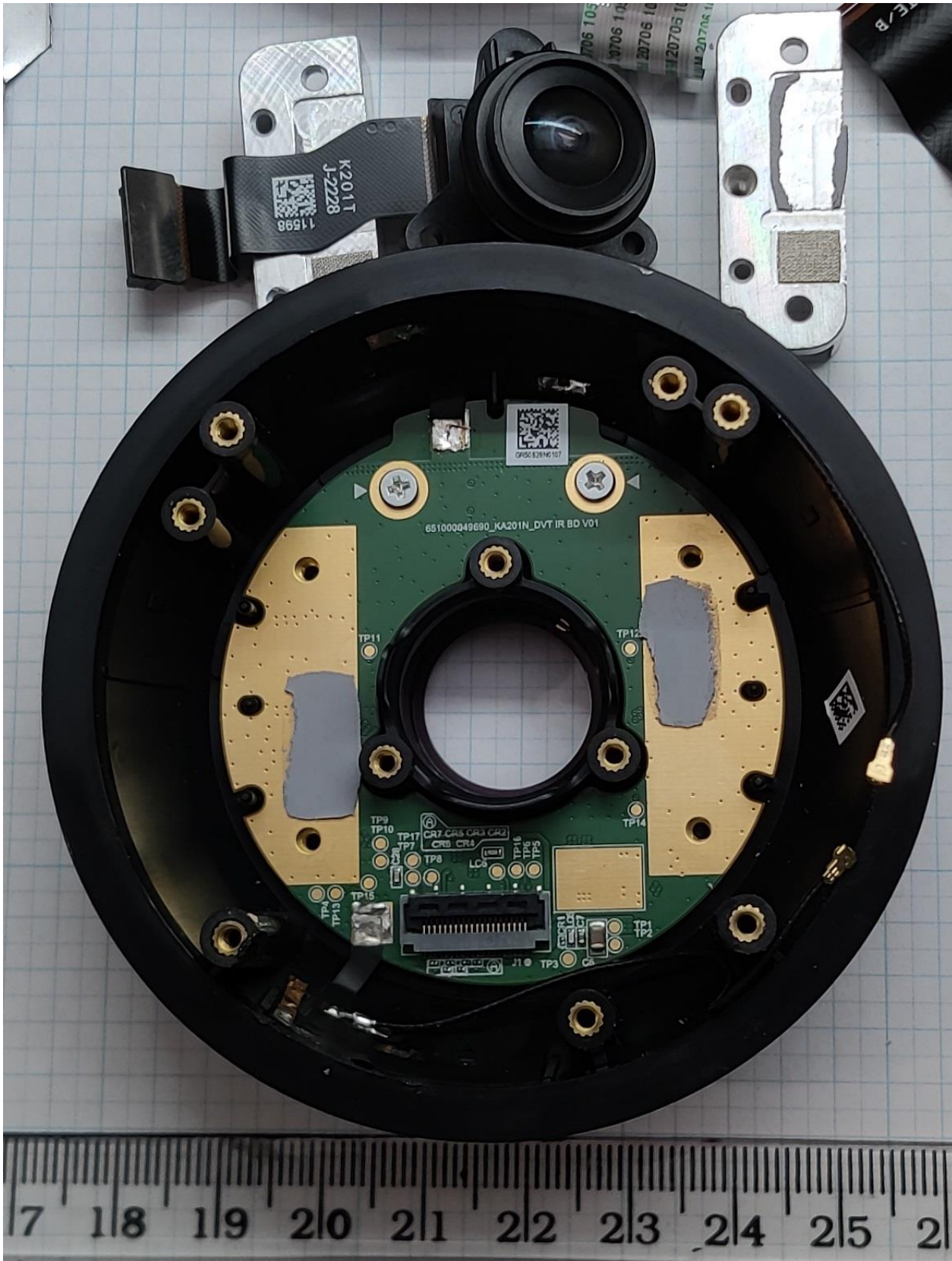
11 - Camera heatsink partly removed



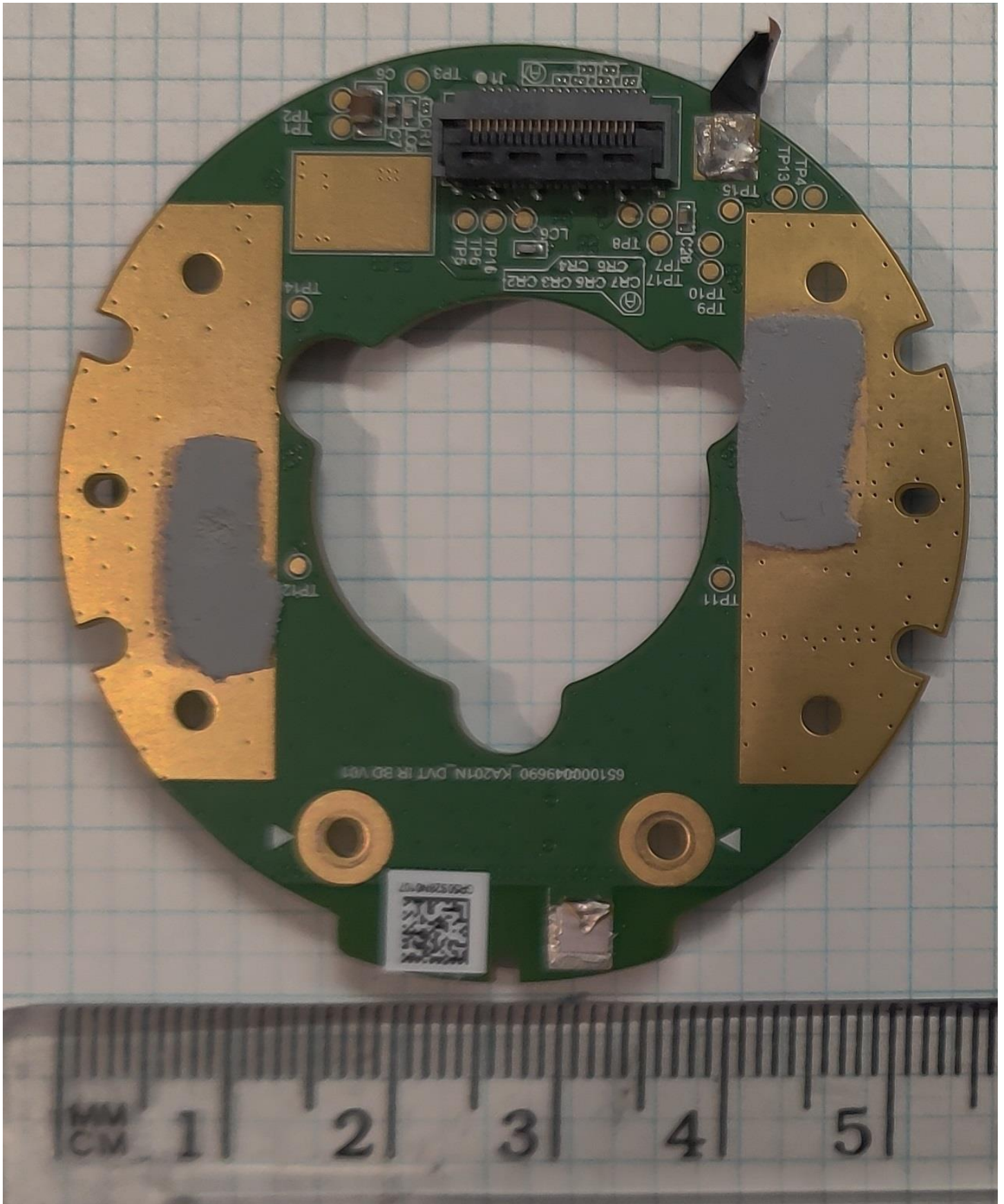
12 - Camera heatsink completely removed



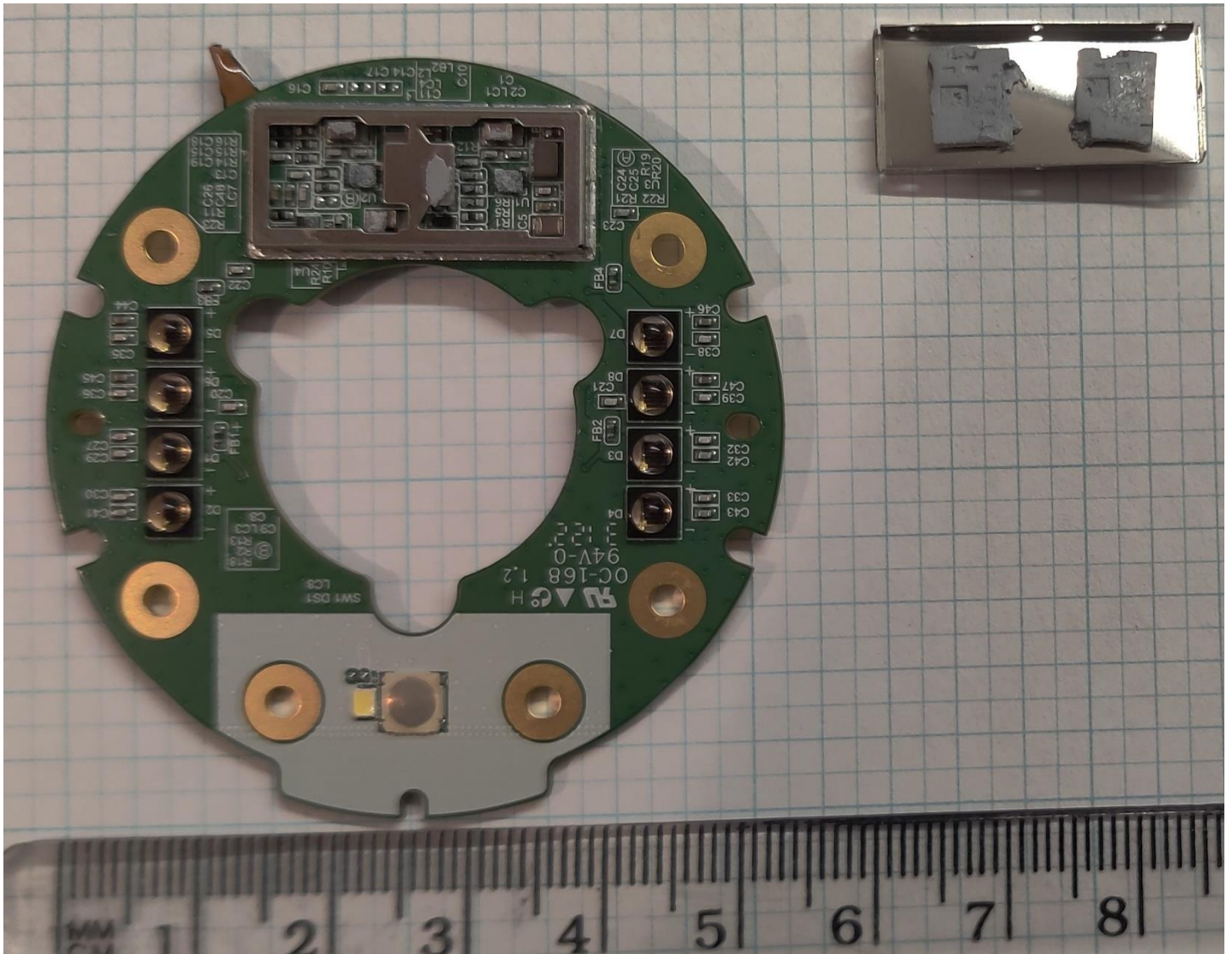
13 - Camera module removed



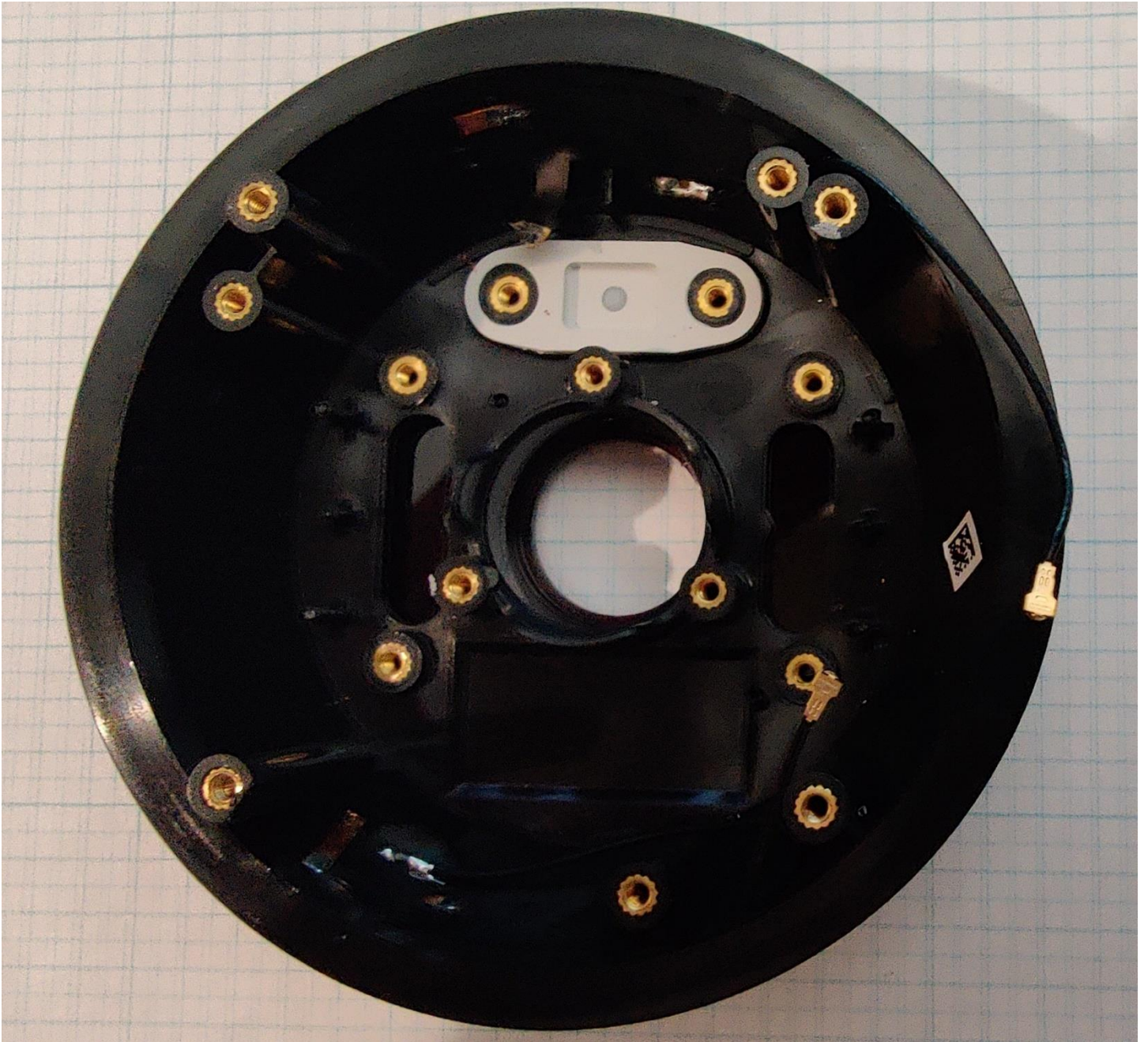
14 – Camera / IR LED board close-up, front



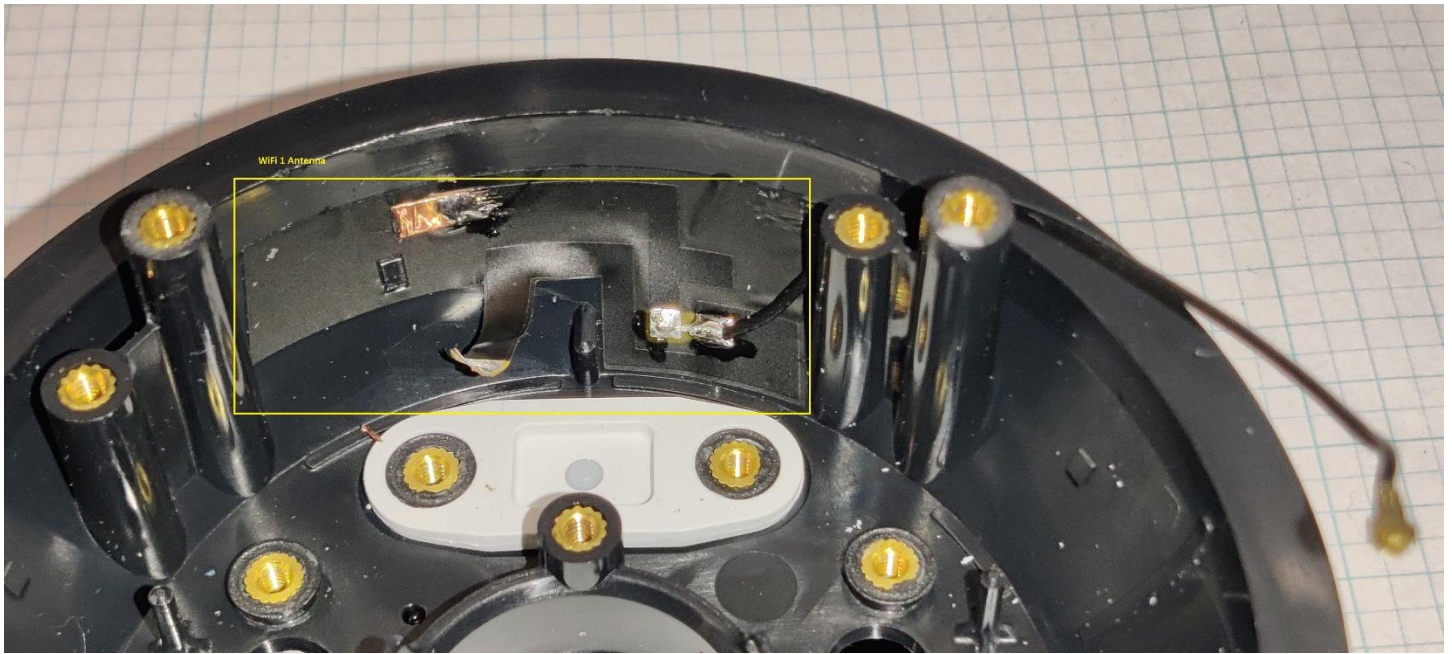
15 – Camera / IR LED board close-up without shields, rear



16 - Rear and antenna carrier



16b - Rear and antenna carrier. WiFi 1 highlighted



16c - Rear and antenna carrier. WiFi 0 highlighted

