

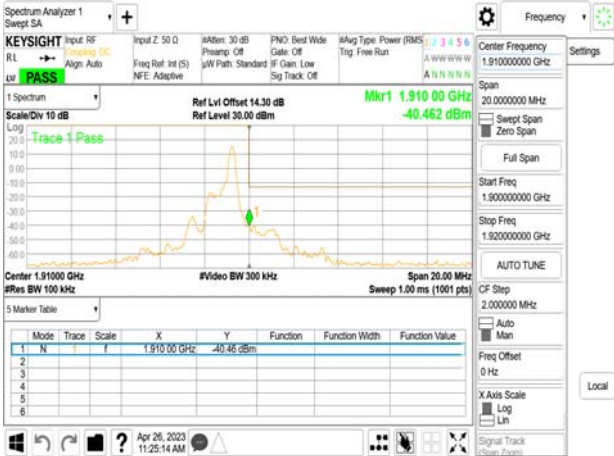
Band Edge\_Band2\_10MHz\_QPSK\_RB1\_0\_0\_CH18650



Band Edge\_Band2\_10MHz\_QPSK\_RB6\_0\_7\_CH19150



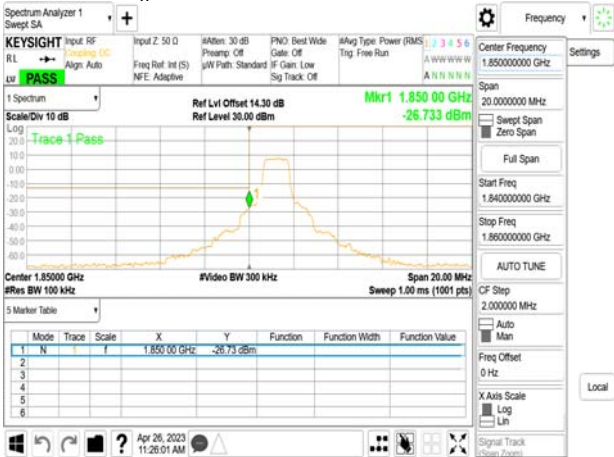
Band Edge\_Band2\_10MHz\_QPSK\_RB1\_5\_7\_CH19150



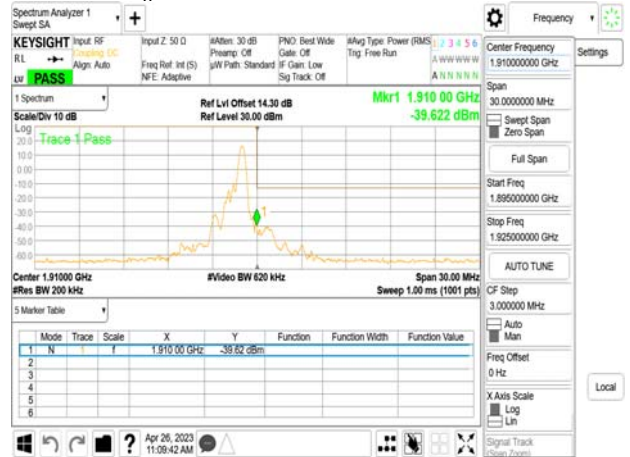
Band Edge\_Band2\_15MHz\_QPSK\_RB1\_0\_0\_CH18675



Band Edge\_Band2\_10MHz\_QPSK\_RB6\_0\_0\_CH18650



Band Edge\_Band2\_15MHz\_QPSK\_RB1\_5\_11\_CH19125

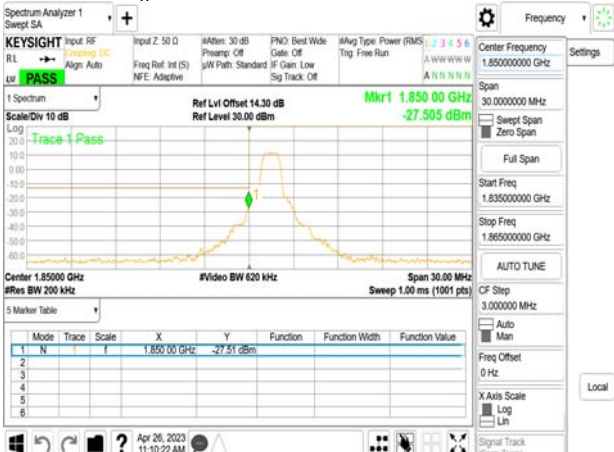


Unless otherwise stated the results shown in this test report refer only to the sample(s) tested and such sample(s) are retained for 90 days only.

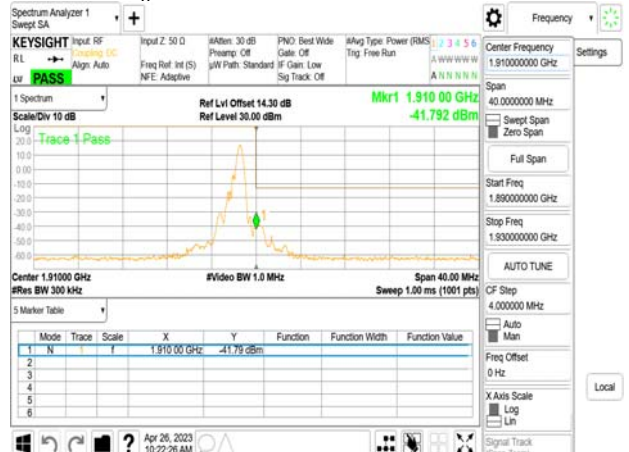
除非另有說明，此報告結果僅對測試之樣品負責，同時此樣品僅保留90天。本報告未經本公司書面許可，不可部份複製。

This document is issued by the Company subject to its General Conditions of Service printed overleaf, available on request or accessible at <http://www.sgs.com.tw/Terms-and-Conditions> and for electronic format documents, subject to Terms and Conditions for Electronic Documents at <http://www.sgs.com.tw/Terms-and-Conditions>. Attention is drawn to the limitation of liability, indemnification and jurisdiction issues defined therein. Any holder of this document is advised that information contained hereon reflects the Company's findings at the time of its intervention only and within the limits of Client's instructions, if any. The Company's sole responsibility is to its Client and this document does not exonerate parties to a transaction from exercising all their rights and obligations under the transaction documents. This document cannot be reproduced except in full, without prior written approval of the Company. Any unauthorized alteration, forgery or falsification of the content or appearance of this document is unlawful and offenders may be prosecuted to the fullest extent of the law.

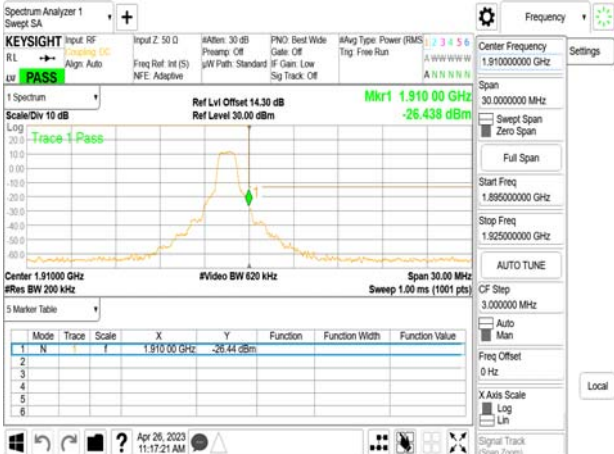
Band Edge\_Band2\_15MHz\_QPSK\_RB6\_0\_0\_CH18675



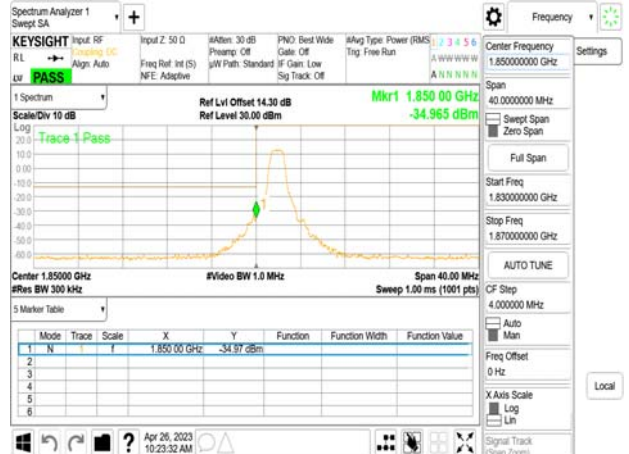
Band Edge\_Band2\_20MHz\_QPSK\_RB1\_5\_15\_CH19100



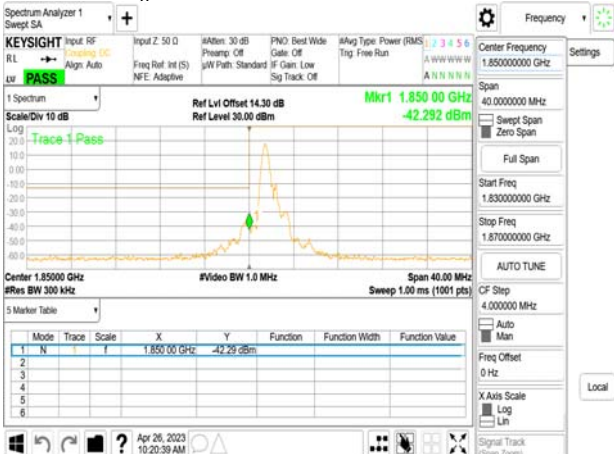
Band Edge\_Band2\_15MHz\_QPSK\_RB6\_0\_11\_CH19125



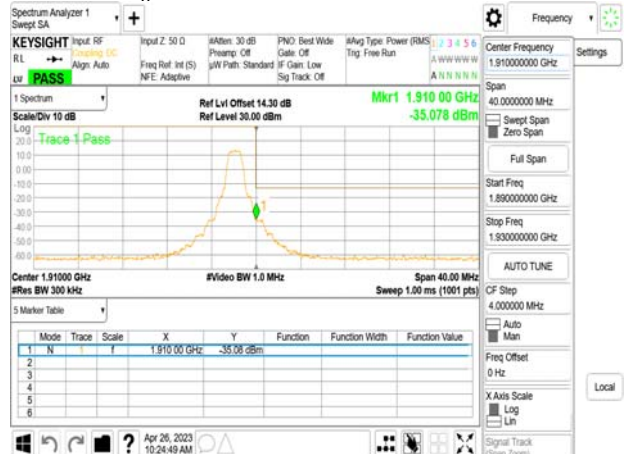
Band Edge\_Band2\_20MHz\_QPSK\_RB6\_0\_0\_CH18700



Band Edge\_Band2\_20MHz\_QPSK\_RB1\_0\_0\_CH18700



Band Edge\_Band2\_20MHz\_QPSK\_RB6\_0\_15\_CH19100



Unless otherwise stated the results shown in this test report refer only to the sample(s) tested and such sample(s) are retained for 90 days only.

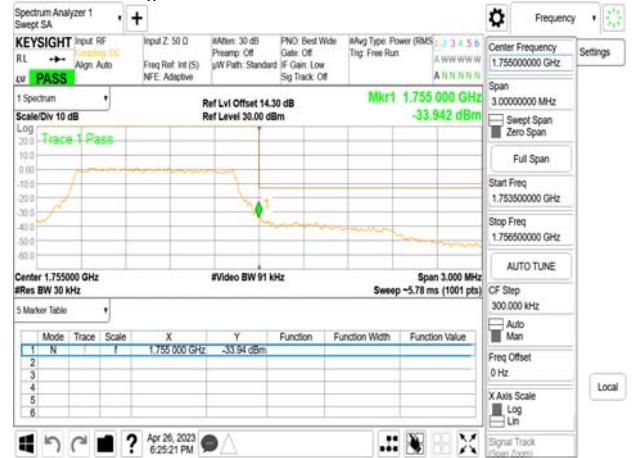
除非另有說明，此報告結果僅對測試之樣品負責，同時此樣品僅保留90天。本報告未經本公司書面許可，不可部份複製。

This document is issued by the Company subject to its General Conditions of Service printed overleaf, available on request or accessible at <http://www.sgs.com.tw/Terms-and-Conditions> and for electronic format documents, subject to Terms and Conditions for Electronic Documents at <http://www.sgs.com.tw/Terms-and-Conditions>. Attention is drawn to the limitation of liability, indemnification and jurisdiction issues defined therein. Any holder of this document is advised that information contained hereon reflects the Company's findings at the time of its intervention only and within the limits of Client's instructions, if any. The Company's sole responsibility is to its Client and this document does not exonerate parties to a transaction from exercising all their rights and obligations under the transaction documents. This document cannot be reproduced except in full, without prior written approval of the Company. Any unauthorized alteration, forgery or falsification of the content or appearance of this document is unlawful and offenders may be prosecuted to the fullest extent of the law.

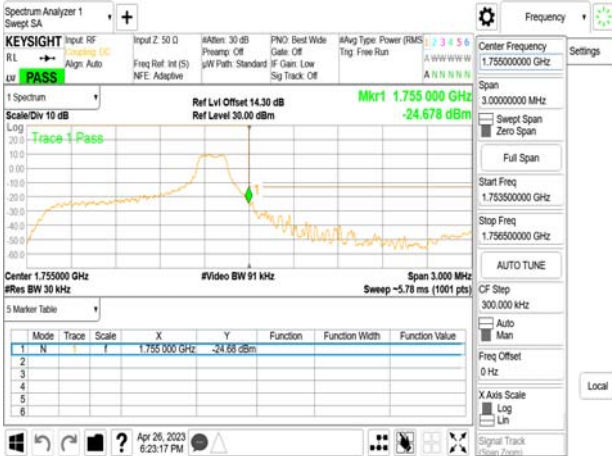
Band Edge\_Band4\_1.4MHz\_QPSK\_RB1\_0\_0\_CH19957



Band Edge\_Band4\_1.4MHz\_QPSK\_RB6\_0\_0\_CH20393



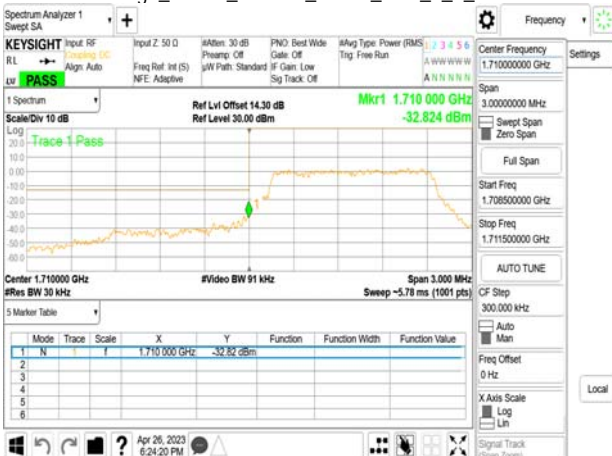
Band Edge\_Band4\_1.4MHz\_QPSK\_RB1\_5\_0\_CH20393



Band Edge\_Band4\_3MHz\_QPSK\_RB1\_0\_0\_CH19965



Band Edge\_Band4\_1.4MHz\_QPSK\_RB6\_0\_0\_CH19957



Band Edge\_Band4\_3MHz\_QPSK\_RB1\_5\_1\_CH20385



Unless otherwise stated the results shown in this test report refer only to the sample(s) tested and such sample(s) are retained for 90 days only.

除非另有說明，此報告結果僅對測試之樣品負責，同時此樣品僅保留90天。本報告未經本公司書面許可，不可部份複製。

This document is issued by the Company subject to its General Conditions of Service printed overleaf, available on request or accessible at <http://www.sgs.com.tw/Terms-and-Conditions> and for electronic format documents, subject to Terms and Conditions for Electronic Documents at <http://www.sgs.com.tw/Terms-and-Conditions>. Attention is drawn to the limitation of liability, indemnification and jurisdiction issues defined therein. Any holder of this document is advised that information contained hereon reflects the Company's findings at the time of its intervention only and within the limits of Client's instructions, if any. The Company's sole responsibility is to its Client and this document does not exonerate parties to a transaction from exercising all their rights and obligations under the transaction documents. This document cannot be reproduced except in full, without prior written approval of the Company. Any unauthorized alteration, forgery or falsification of the content or appearance of this document is unlawful and offenders may be prosecuted to the fullest extent of the law.

Band Edge\_Band4\_3MHz\_OPSK\_RB6\_0\_0\_CH19965



Band Edge\_Band4\_5MHz\_OPSK\_RB1\_5\_3\_CH20375



Band Edge\_Band4\_3MHz\_OPSK\_RB6\_0\_1\_CH20385



Band Edge\_Band4\_5MHz\_OPSK\_RB6\_0\_0\_CH19975



Band Edge\_Band4\_5MHz\_OPSK\_RB1\_0\_0\_CH19975



Band Edge\_Band4\_5MHz\_OPSK\_RB6\_0\_3\_CH20375



Unless otherwise stated the results shown in this test report refer only to the sample(s) tested and such sample(s) are retained for 90 days only.

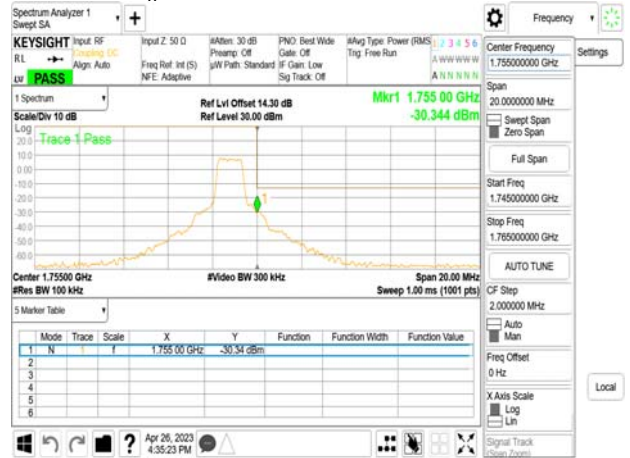
除非另有說明，此報告結果僅對測試之樣品負責，同時此樣品僅保留90天。本報告未經本公司書面許可，不可部份複製。

This document is issued by the Company subject to its General Conditions of Service printed overleaf, available on request or accessible at <http://www.sgs.com.tw/Terms-and-Conditions> and for electronic format documents, subject to Terms and Conditions for Electronic Documents at <http://www.sgs.com.tw/Terms-and-Conditions>. Attention is drawn to the limitation of liability, indemnification and jurisdiction issues defined therein. Any holder of this document is advised that information contained hereon reflects the Company's findings at the time of its intervention only and within the limits of Client's instructions, if any. The Company's sole responsibility is to its Client and this document does not exonerate parties to a transaction from exercising all their rights and obligations under the transaction documents. This document cannot be reproduced except in full, without prior written approval of the Company. Any unauthorized alteration, forgery or falsification of the content or appearance of this document is unlawful and offenders may be prosecuted to the fullest extent of the law.

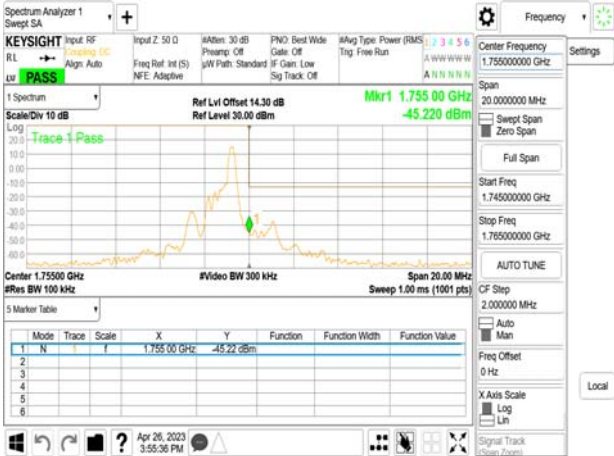
Band Edge\_Band4\_10MHz\_QPSK\_RB1\_0\_0\_CH20000



Band Edge\_Band4\_10MHz\_QPSK\_RB6\_0\_7\_CH20350



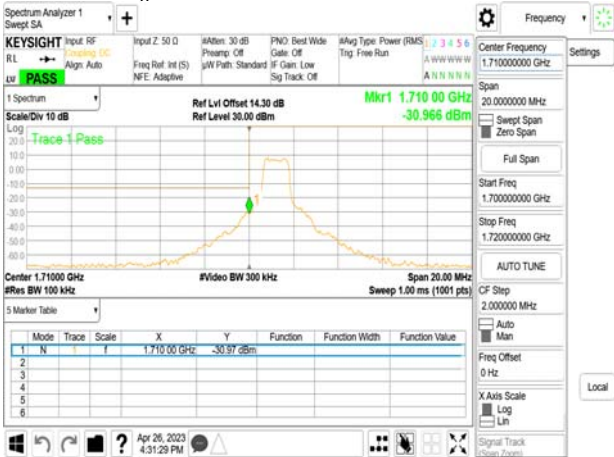
Band Edge\_Band4\_10MHz\_QPSK\_RB1\_5\_7\_CH20350



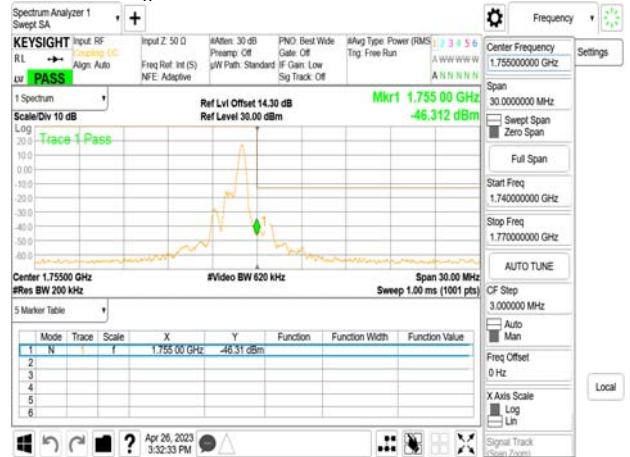
Band Edge\_Band4\_15MHz\_QPSK\_RB1\_0\_0\_CH20025



Band Edge\_Band4\_10MHz\_QPSK\_RB6\_0\_0\_CH20000



Band Edge\_Band4\_15MHz\_QPSK\_RB1\_5\_11\_CH20325

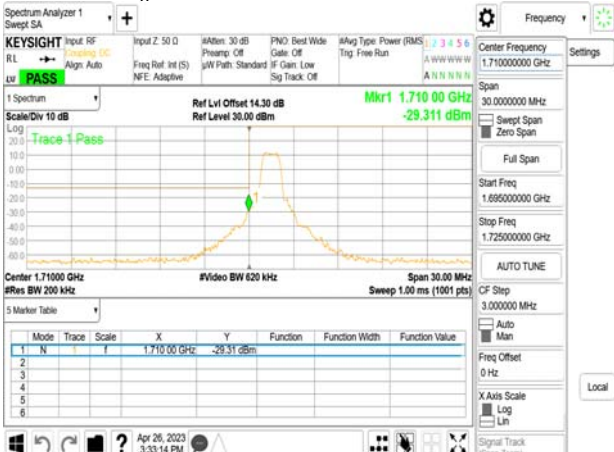


Unless otherwise stated the results shown in this test report refer only to the sample(s) tested and such sample(s) are retained for 90 days only.

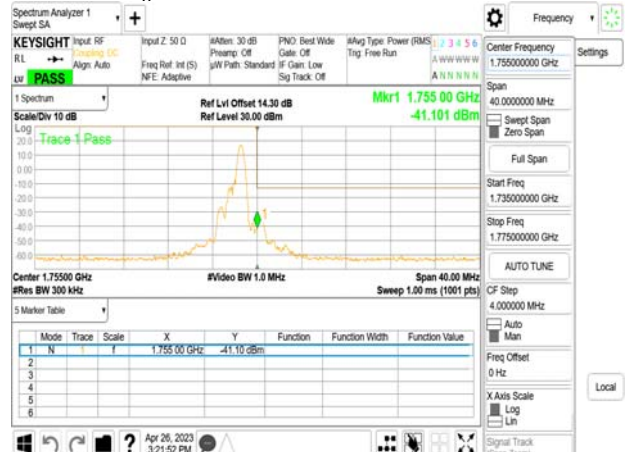
除非另有說明，此報告結果僅對測試之樣品負責，同時此樣品僅保留90天。本報告未經本公司書面許可，不可部份複製。

This document is issued by the Company subject to its General Conditions of Service printed overleaf, available on request or accessible at <http://www.sgs.com.tw/Terms-and-Conditions> and for electronic format documents, subject to Terms and Conditions for Electronic Documents at <http://www.sgs.com.tw/Terms-and-Conditions>. Attention is drawn to the limitation of liability, indemnification and jurisdiction issues defined therein. Any holder of this document is advised that information contained hereon reflects the Company's findings at the time of its intervention only and within the limits of Client's instructions, if any. The Company's sole responsibility is to its Client and this document does not exonerate parties to a transaction from exercising all their rights and obligations under the transaction documents. This document cannot be reproduced except in full, without prior written approval of the Company. Any unauthorized alteration, forgery or falsification of the content or appearance of this document is unlawful and offenders may be prosecuted to the fullest extent of the law.

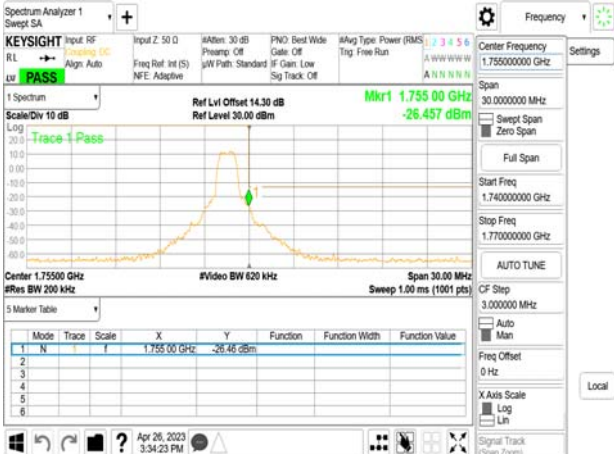
Band Edge\_Band4\_15MHz\_QPSK\_RB6\_0\_0\_CH20025



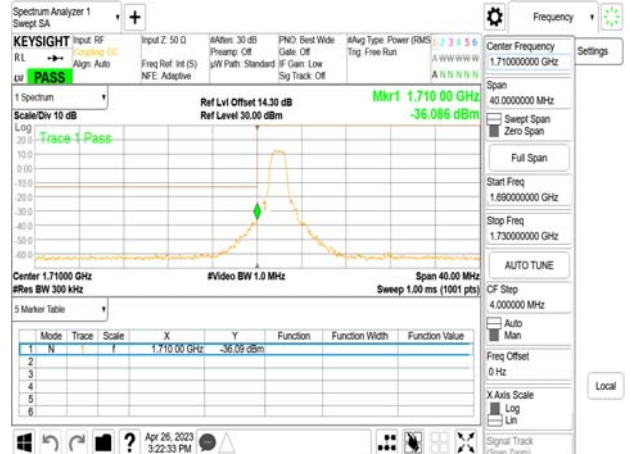
Band Edge\_Band4\_20MHz\_QPSK\_RB1\_5\_15\_CH20300



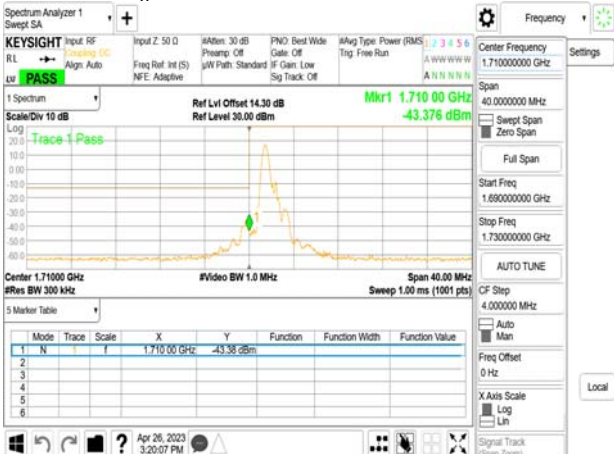
Band Edge\_Band4\_15MHz\_QPSK\_RB6\_0\_11\_CH20325



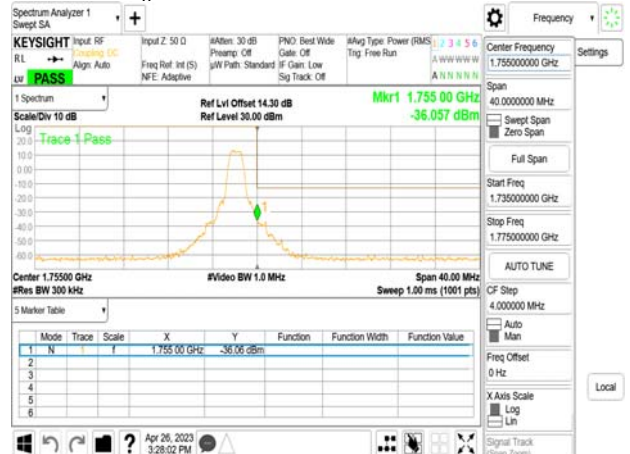
Band Edge\_Band4\_20MHz\_QPSK\_RB6\_0\_0\_CH20050



Band Edge\_Band4\_20MHz\_QPSK\_RB1\_0\_0\_CH20050



Band Edge\_Band4\_20MHz\_QPSK\_RB6\_0\_15\_CH20300

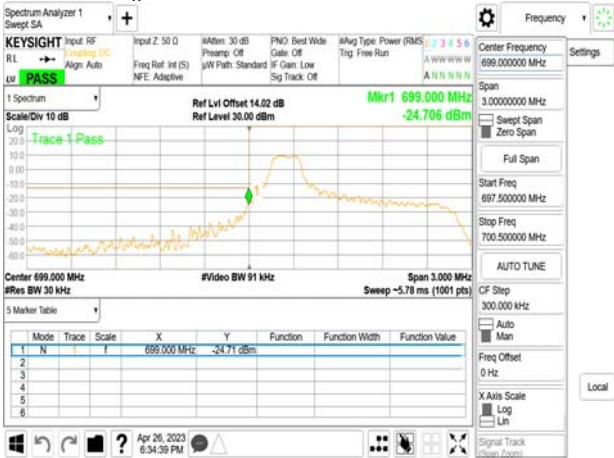


Unless otherwise stated the results shown in this test report refer only to the sample(s) tested and such sample(s) are retained for 90 days only.

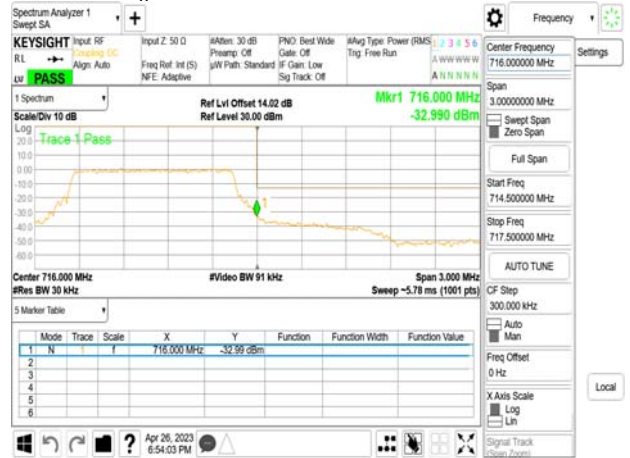
除非另有說明，此報告結果僅對測試之樣品負責，同時此樣品僅保留90天。本報告未經本公司書面許可，不可部份複製。

This document is issued by the Company subject to its General Conditions of Service printed overleaf, available on request or accessible at <http://www.sgs.com.tw/Terms-and-Conditions> and for electronic format documents, subject to Terms and Conditions for Electronic Documents at <http://www.sgs.com.tw/Terms-and-Conditions>. Attention is drawn to the limitation of liability, indemnification and jurisdiction issues defined therein. Any holder of this document is advised that information contained hereon reflects the Company's findings at the time of its intervention only and within the limits of Client's instructions, if any. The Company's sole responsibility is to its Client and this document does not exonerate parties to a transaction from exercising all their rights and obligations under the transaction documents. This document cannot be reproduced except in full, without prior written approval of the Company. Any unauthorized alteration, forgery or falsification of the content or appearance of this document is unlawful and offenders may be prosecuted to the fullest extent of the law.

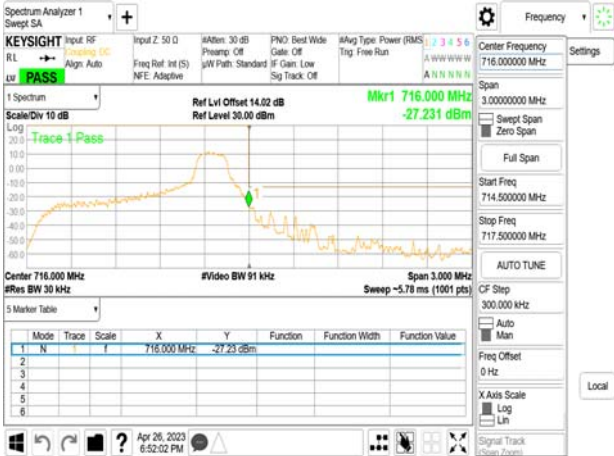
Band Edge\_Band12\_1.4MHz\_QPSK\_RB1\_0\_0\_CH23017



Band Edge\_Band12\_1.4MHz\_QPSK\_RB6\_0\_0\_CH23173



Band Edge\_Band12\_1.4MHz\_QPSK\_RB1\_5\_0\_CH23173



Band Edge\_Band12\_3MHz\_QPSK\_RB1\_0\_0\_CH23025



Band Edge\_Band12\_1.4MHz\_QPSK\_RB6\_0\_0\_CH23017



Band Edge\_Band12\_3MHz\_QPSK\_RB1\_5\_1\_CH23165



Unless otherwise stated the results shown in this test report refer only to the sample(s) tested and such sample(s) are retained for 90 days only.

除非另有說明，此報告結果僅對測試之樣品負責，同時此樣品僅保留90天。本報告未經本公司書面許可，不可部份複製。

This document is issued by the Company subject to its General Conditions of Service printed overleaf, available on request or accessible at <http://www.sgs.com.tw/Terms-and-Conditions> and for electronic format documents, subject to Terms and Conditions for Electronic Documents at <http://www.sgs.com.tw/Terms-and-Conditions>. Attention is drawn to the limitation of liability, indemnification and jurisdiction issues defined therein. Any holder of this document is advised that information contained hereon reflects the Company's findings at the time of its intervention only and within the limits of Client's instructions, if any. The Company's sole responsibility is to its Client and this document does not exonerate parties to a transaction from exercising all their rights and obligations under the transaction documents. This document cannot be reproduced except in full, without prior written approval of the Company. Any unauthorized alteration, forgery or falsification of the content or appearance of this document is unlawful and offenders may be prosecuted to the fullest extent of the law.

Band Edge\_Band12\_3MHz\_QPSK\_RB6\_0\_0\_CH23025



Band Edge\_Band12\_5MHz\_QPSK\_RB1\_5\_3\_CH23155



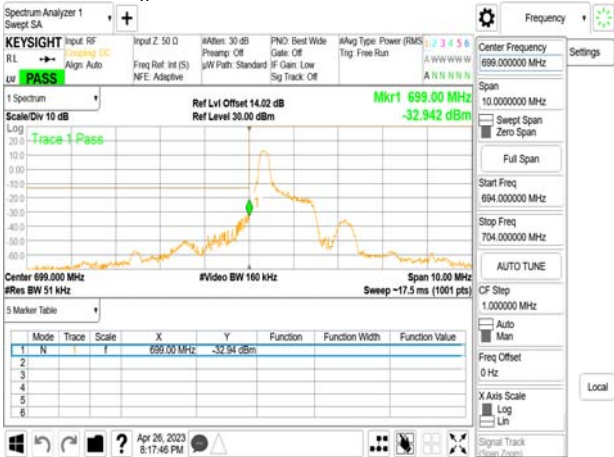
Band Edge\_Band12\_3MHz\_QPSK\_RB6\_0\_1\_CH23165



Band Edge\_Band12\_5MHz\_QPSK\_RB6\_0\_0\_CH23035



Band Edge\_Band12\_5MHz\_QPSK\_RB1\_0\_0\_CH23035



Band Edge\_Band12\_5MHz\_QPSK\_RB6\_0\_3\_CH23155



Unless otherwise stated the results shown in this test report refer only to the sample(s) tested and such sample(s) are retained for 90 days only.

除非另有說明，此報告結果僅對測試之樣品負責，同時此樣品僅保留90天。本報告未經本公司書面許可，不可部份複製。

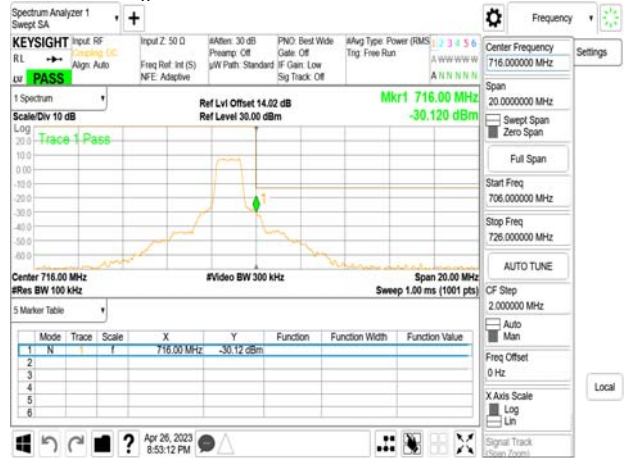
This document is issued by the Company subject to its General Conditions of Service printed overleaf, available on request or accessible at <http://www.sgs.com.tw/Terms-and-Conditions> and for electronic format documents, subject to Terms and Conditions for Electronic Documents at <http://www.sgs.com.tw/Terms-and-Conditions>. Attention is drawn to the limitation of liability, indemnification and jurisdiction issues defined therein. Any holder of this document is advised that information contained hereon reflects the Company's findings at the time of its intervention only and within the limits of Client's instructions, if any. The Company's sole responsibility is to its Client and this document does not exonerate parties to a transaction from exercising all their rights and obligations under the transaction documents. This document cannot be reproduced except in full, without prior written approval of the Company. Any unauthorized alteration, forgery or falsification of the content or appearance of this document is unlawful and offenders may be prosecuted to the fullest extent of the law.



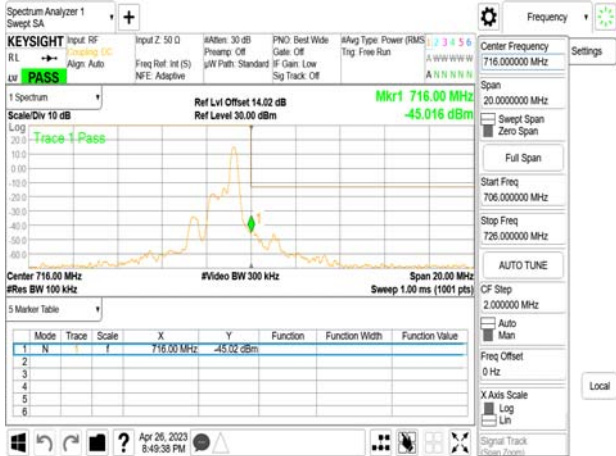
Band Edge\_Band12\_10MHz\_QPSK\_RB1\_0\_0\_CH23060



Band Edge\_Band12\_10MHz\_QPSK\_RB6\_0\_7\_CH23130



Band Edge\_Band12\_10MHz\_QPSK\_RB1\_5\_7\_CH23130



Band Edge\_Band12\_10MHz\_QPSK\_RB6\_0\_0\_CH23060



Unless otherwise stated the results shown in this test report refer only to the sample(s) tested and such sample(s) are retained for 90 days only.

除非另有說明，此報告結果僅對測試之樣品負責，同時此樣品僅保留90天。本報告未經本公司書面許可，不可部份複製。

This document is issued by the Company subject to its General Conditions of Service printed overleaf, available on request or accessible at <http://www.sgs.com.tw/Terms-and-Conditions> and for electronic format documents, subject to Terms and Conditions for Electronic Documents at <http://www.sgs.com.tw/Terms-and-Conditions>. Attention is drawn to the limitation of liability, indemnification and jurisdiction issues defined therein. Any holder of this document is advised that information contained hereon reflects the Company's findings at the time of its intervention only and within the limits of Client's instructions, if any. The Company's sole responsibility is to its Client and this document does not exonerate parties to a transaction from exercising all their rights and obligations under the transaction documents. This document cannot be reproduced except in full, without prior written approval of the Company. Any unauthorized alteration, forgery or falsification of the content or appearance of this document is unlawful and offenders may be prosecuted to the fullest extent of the law.



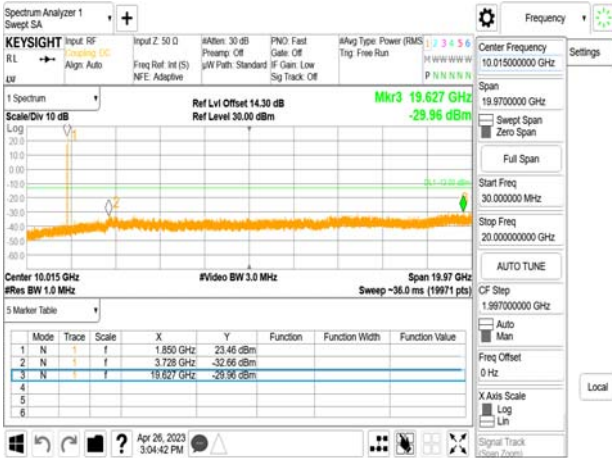
## 9.5 Spurious Emission Measurement Result:

Refer to next pages.

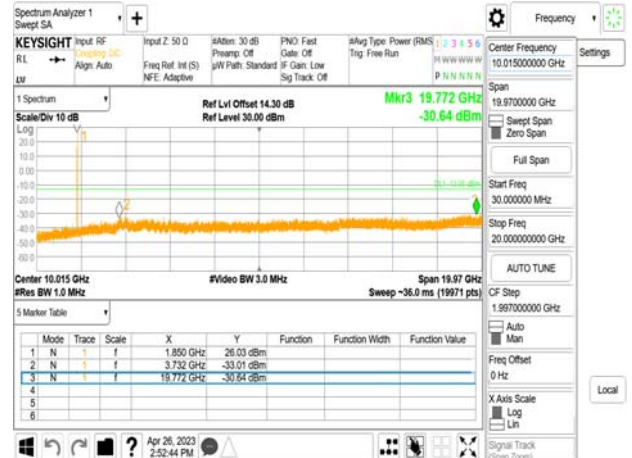
Unless otherwise stated the results shown in this test report refer only to the sample(s) tested and such sample(s) are retained for 90 days only.  
除非另有說明，此報告結果僅對測試之樣品負責，同時此樣品僅保留90天。本報告未經本公司書面許可，不可部份複製。

This document is issued by the Company subject to its General Conditions of Service printed overleaf, available on request or accessible at <http://www.sgs.com.tw/Terms-and-Conditions> and for electronic format documents, subject to Terms and Conditions for Electronic Documents at <http://www.sgs.com.tw/Terms-and-Conditions>. Attention is drawn to the limitation of liability, indemnification and jurisdiction issues defined therein. Any holder of this document is advised that information contained hereon reflects the Company's findings at the time of its intervention only and within the limits of Client's instructions, if any. The Company's sole responsibility is to its Client and this document does not exonerate parties to a transaction from exercising all their rights and obligations under the transaction documents. This document cannot be reproduced except in full, without prior written approval of the Company. Any unauthorized alteration, forgery or falsification of the content or appearance of this document is unlawful and offenders may be prosecuted to the fullest extent of the law.

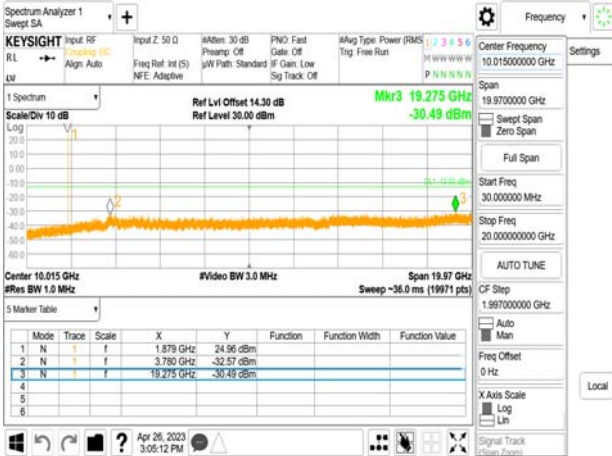
Band2\_1.4MHz\_OPSK\_RB1\_0\_0\_CH18607



Band2\_3MHz\_OPSK\_RB1\_0\_0\_CH18615



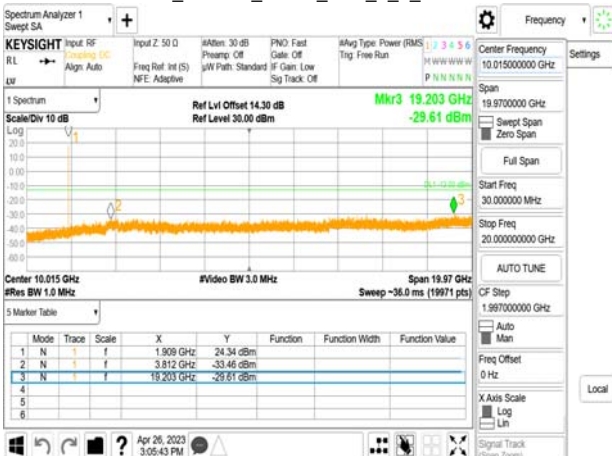
Band2\_1.4MHz\_OPSK\_RB1\_0\_0\_CH18900



Band2\_3MHz\_OPSK\_RB1\_0\_0\_CH18900



Band2\_1.4MHz\_OPSK\_RB1\_0\_0\_CH19193



Band2\_3MHz\_OPSK\_RB1\_0\_0\_CH19185

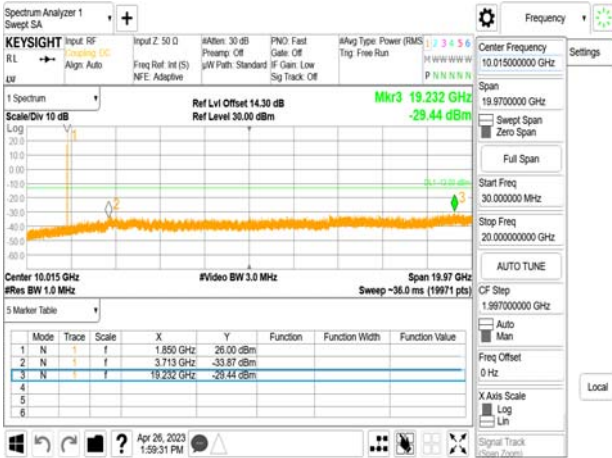


Unless otherwise stated the results shown in this test report refer only to the sample(s) tested and such sample(s) are retained for 90 days only.

除非另有說明，此報告結果僅對測試之樣品負責，同時此樣品僅保留90天。本報告未經本公司書面許可，不可部份複製。

This document is issued by the Company subject to its General Conditions of Service printed overleaf, available on request or accessible at <http://www.sgs.com.tw/Terms-and-Conditions> and for electronic format documents, subject to Terms and Conditions for Electronic Documents at <http://www.sgs.com.tw/Terms-and-Conditions>. Attention is drawn to the limitation of liability, indemnification and jurisdiction issues defined therein. Any holder of this document is advised that information contained hereon reflects the Company's findings at the time of its intervention only and within the limits of Client's instructions, if any. The Company's sole responsibility is to its Client and this document does not exonerate parties to a transaction from exercising all their rights and obligations under the transaction documents. This document cannot be reproduced except in full, without prior written approval of the Company. Any unauthorized alteration, forgery or falsification of the content or appearance of this document is unlawful and offenders may be prosecuted to the fullest extent of the law.

Band2\_5MHz\_QPSK\_RB1\_0\_0\_CH18625



Band2\_10MHz\_QPSK\_RB1\_0\_0\_CH18650



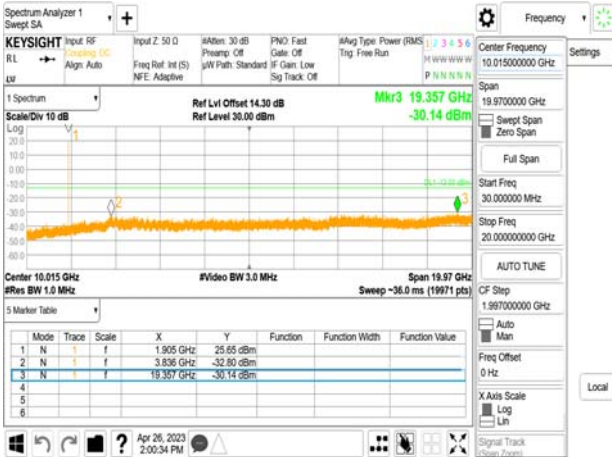
Band2\_5MHz\_QPSK\_RB1\_0\_0\_CH18900



Band2\_10MHz\_QPSK\_RB1\_0\_0\_CH18900



Band2\_5MHz\_QPSK\_RB1\_0\_0\_CH19175



Band2\_10MHz\_QPSK\_RB1\_0\_0\_CH19150

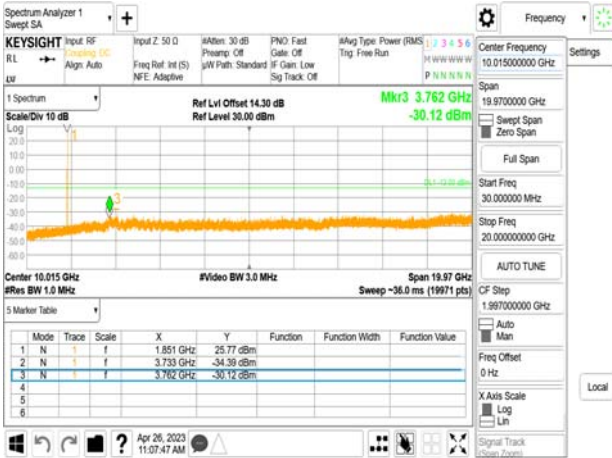


Unless otherwise stated the results shown in this test report refer only to the sample(s) tested and such sample(s) are retained for 90 days only.

除非另有說明，此報告結果僅對測試之樣品負責，同時此樣品僅保留90天。本報告未經本公司書面許可，不可部份複製。

This document is issued by the Company subject to its General Conditions of Service printed overleaf, available on request or accessible at <http://www.sgs.com.tw/Terms-and-Conditions> and for electronic format documents, subject to Terms and Conditions for Electronic Documents at <http://www.sgs.com.tw/Terms-and-Conditions>. Attention is drawn to the limitation of liability, indemnification and jurisdiction issues defined therein. Any holder of this document is advised that information contained hereon reflects the Company's findings at the time of its intervention only and within the limits of Client's instructions, if any. The Company's sole responsibility is to its Client and this document does not exonerate parties to a transaction from exercising all their rights and obligations under the transaction documents. This document cannot be reproduced except in full, without prior written approval of the Company. Any unauthorized alteration, forgery or falsification of the content or appearance of this document is unlawful and offenders may be prosecuted to the fullest extent of the law.

Band2\_15MHz\_QPSK\_RB1\_0\_0\_CH18675



Band2\_20MHz\_QPSK\_RB1\_0\_0\_CH18700



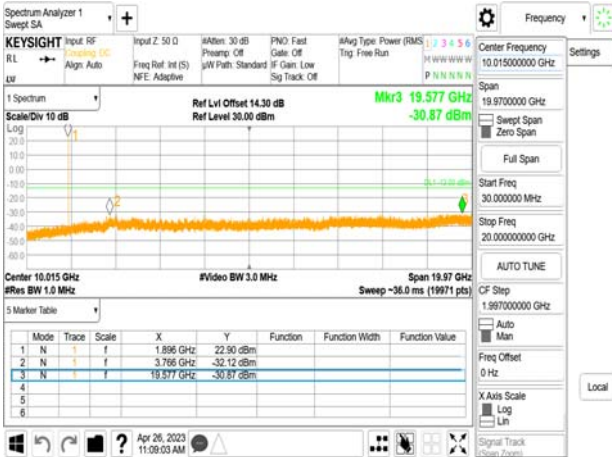
Band2\_15MHz\_QPSK\_RB1\_0\_0\_CH18900



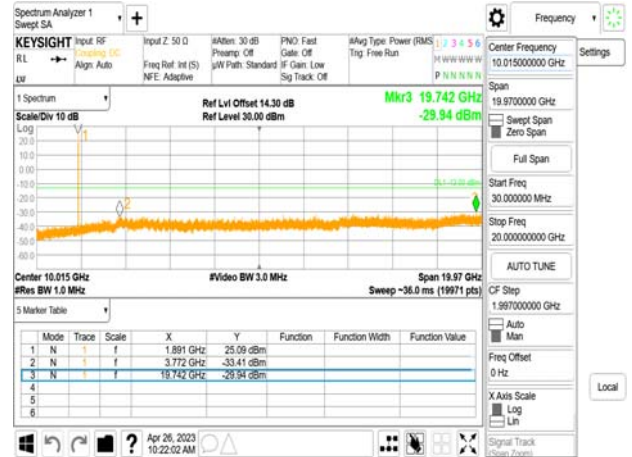
Band2\_20MHz\_QPSK\_RB1\_0\_0\_CH18900



Band2\_15MHz\_QPSK\_RB1\_0\_0\_CH19125



Band2\_20MHz\_QPSK\_RB1\_0\_0\_CH19100



Unless otherwise stated the results shown in this test report refer only to the sample(s) tested and such sample(s) are retained for 90 days only.

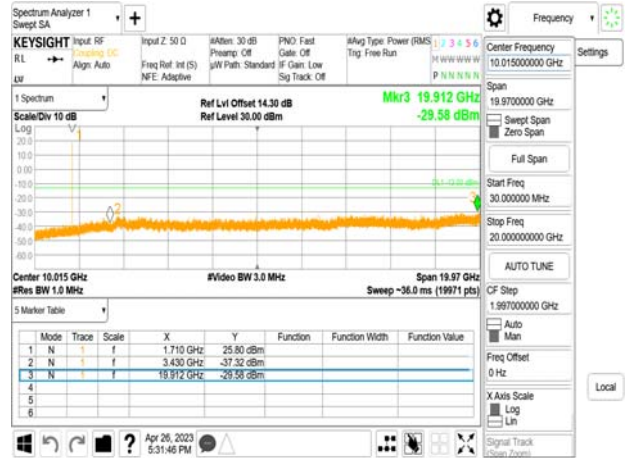
除非另有說明，此報告結果僅對測試之樣品負責，同時此樣品僅保留90天。本報告未經本公司書面許可，不可部份複製。

This document is issued by the Company subject to its General Conditions of Service printed overleaf, available on request or accessible at <http://www.sgs.com.tw/Terms-and-Conditions> and for electronic format documents, subject to Terms and Conditions for Electronic Documents at <http://www.sgs.com.tw/Terms-and-Conditions>. Attention is drawn to the limitation of liability, indemnification and jurisdiction issues defined therein. Any holder of this document is advised that information contained hereon reflects the Company's findings at the time of its intervention only and within the limits of Client's instructions, if any. The Company's sole responsibility is to its Client and this document does not exonerate parties to a transaction from exercising all their rights and obligations under the transaction documents. This document cannot be reproduced except in full, without prior written approval of the Company. Any unauthorized alteration, forgery or falsification of the content or appearance of this document is unlawful and offenders may be prosecuted to the fullest extent of the law.

Band4\_1.4MHz\_OPSK\_RB1\_0\_0\_CH19957



Band4\_3MHz\_OPSK\_RB1\_0\_0\_CH19965



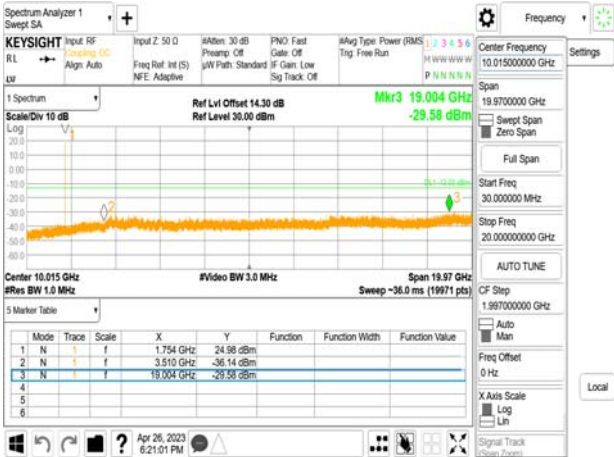
Band4\_1.4MHz\_OPSK\_RB1\_0\_0\_CH20175



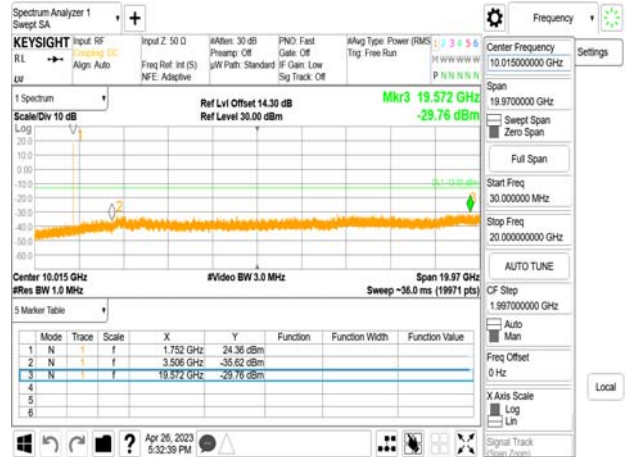
Band4\_3MHz\_OPSK\_RB1\_0\_0\_CH20175



Band4\_1.4MHz\_OPSK\_RB1\_0\_0\_CH20393



Band4\_3MHz\_OPSK\_RB1\_0\_0\_CH20385



Unless otherwise stated the results shown in this test report refer only to the sample(s) tested and such sample(s) are retained for 90 days only.

除非另有說明，此報告結果僅對測試之樣品負責，同時此樣品僅保留90天。本報告未經本公司書面許可，不可部份複製。

This document is issued by the Company subject to its General Conditions of Service printed overleaf, available on request or accessible at <http://www.sgs.com.tw/Terms-and-Conditions> and for electronic format documents, subject to Terms and Conditions for Electronic Documents at <http://www.sgs.com.tw/Terms-and-Conditions>. Attention is drawn to the limitation of liability, indemnification and jurisdiction issues defined therein. Any holder of this document is advised that information contained hereon reflects the Company's findings at the time of its intervention only and within the limits of Client's instructions, if any. The Company's sole responsibility is to its Client and this document does not exonerate parties to a transaction from exercising all their rights and obligations under the transaction documents. This document cannot be reproduced except in full, without prior written approval of the Company. Any unauthorized alteration, forgery or falsification of the content or appearance of this document is unlawful and offenders may be prosecuted to the fullest extent of the law.

Band4\_5MHz\_QPSK\_RB1\_0\_0\_CH19975



Band4\_10MHz\_QPSK\_RB1\_0\_0\_CH20000



Band4\_5MHz\_QPSK\_RB1\_0\_0\_CH20175



Band4\_10MHz\_QPSK\_RB1\_0\_0\_CH20175



Band4\_5MHz\_QPSK\_RB1\_0\_0\_CH20375



Band4\_10MHz\_QPSK\_RB1\_0\_0\_CH20350



Unless otherwise stated the results shown in this test report refer only to the sample(s) tested and such sample(s) are retained for 90 days only.

除非另有說明，此報告結果僅對測試之樣品負責，同時此樣品僅保留90天。本報告未經本公司書面許可，不可部份複製。

This document is issued by the Company subject to its General Conditions of Service printed overleaf, available on request or accessible at <http://www.sgs.com.tw/Terms-and-Conditions> and for electronic format documents, subject to Terms and Conditions for Electronic Documents at <http://www.sgs.com.tw/Terms-and-Conditions>. Attention is drawn to the limitation of liability, indemnification and jurisdiction issues defined therein. Any holder of this document is advised that information contained hereon reflects the Company's findings at the time of its intervention only and within the limits of Client's instructions, if any. The Company's sole responsibility is to its Client and this document does not exonerate parties to a transaction from exercising all their rights and obligations under the transaction documents. This document cannot be reproduced except in full, without prior written approval of the Company. Any unauthorized alteration, forgery or falsification of the content or appearance of this document is unlawful and offenders may be prosecuted to the fullest extent of the law.

Band4\_15MHz\_QPSK\_RB1\_0\_0\_CH20025



Band4\_20MHz\_QPSK\_RB1\_0\_0\_CH20050



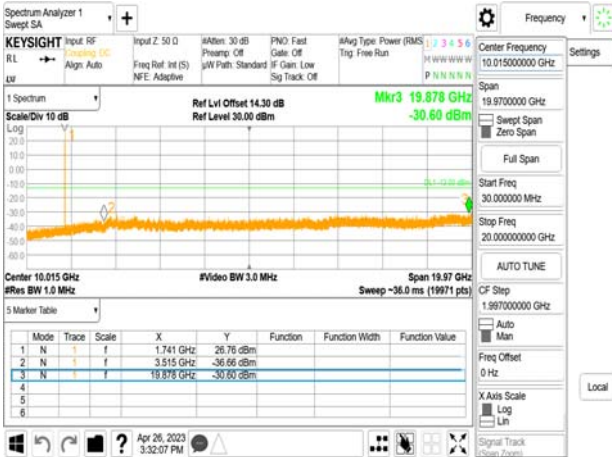
Band4\_15MHz\_QPSK\_RB1\_0\_0\_CH20175



Band4\_20MHz\_QPSK\_RB1\_0\_0\_CH20175



Band4\_15MHz\_QPSK\_RB1\_0\_0\_CH20325



Band4\_20MHz\_QPSK\_RB1\_0\_0\_CH20300



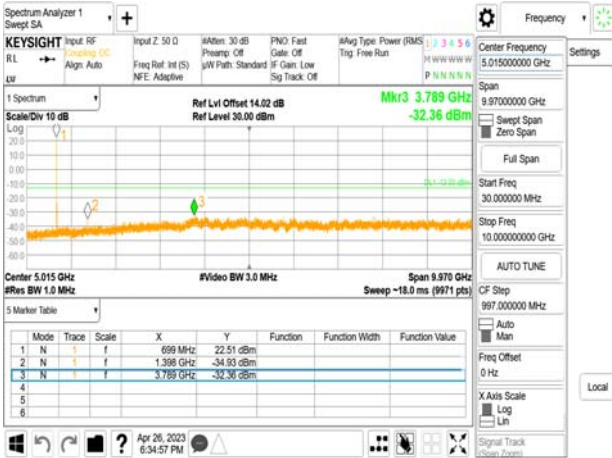
Unless otherwise stated the results shown in this test report refer only to the sample(s) tested and such sample(s) are retained for 90 days only.

除非另有說明，此報告結果僅對測試之樣品負責，同時此樣品僅保留90天。本報告未經本公司書面許可，不可部份複製。

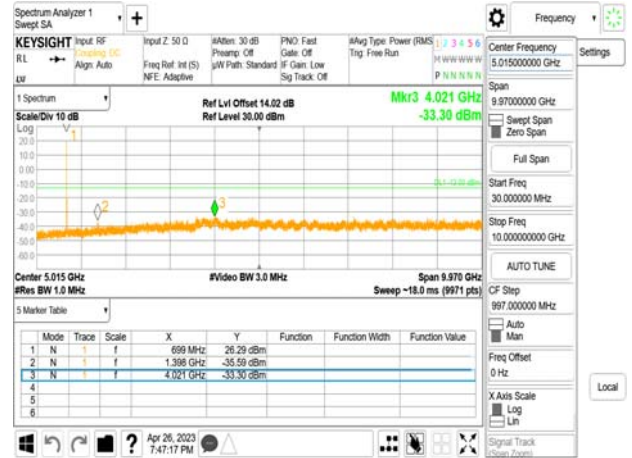
This document is issued by the Company subject to its General Conditions of Service printed overleaf, available on request or accessible at <http://www.sgs.com.tw/Terms-and-Conditions> and for electronic format documents, subject to Terms and Conditions for Electronic Documents at <http://www.sgs.com.tw/Terms-and-Conditions>. Attention is drawn to the limitation of liability, indemnification and jurisdiction issues defined therein. Any holder of this document is advised that information contained hereon reflects the Company's findings at the time of its intervention only and within the limits of Client's instructions, if any. The Company's sole responsibility is to its Client and this document does not exonerate parties to a transaction from exercising all their rights and obligations under the transaction documents. This document cannot be reproduced except in full, without prior written approval of the Company. Any unauthorized alteration, forgery or falsification of the content or appearance of this document is unlawful and offenders may be prosecuted to the fullest extent of the law.



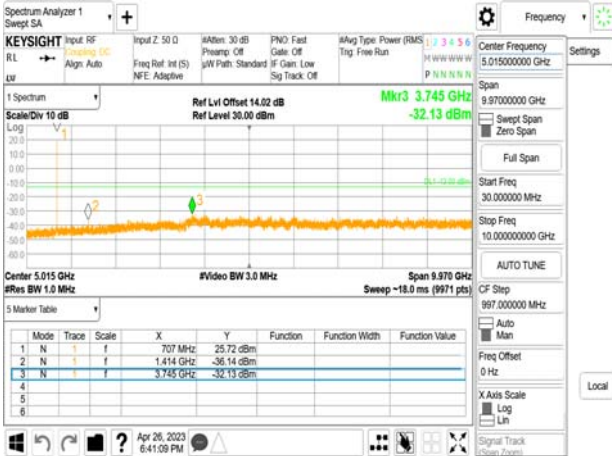
Band12\_1.4MHz\_QPSK\_RB1\_0\_0\_CH23017



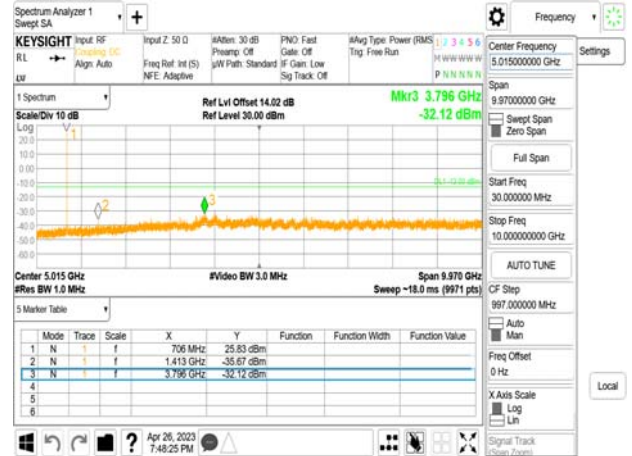
Band12\_3MHz\_QPSK\_RB1\_0\_0\_CH23025



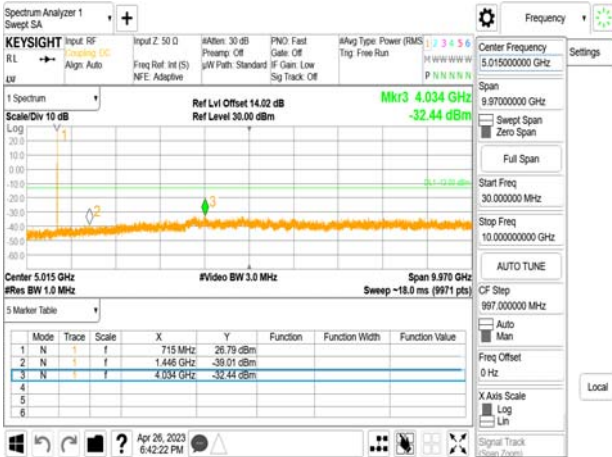
Band12\_1.4MHz\_QPSK\_RB1\_0\_0\_CH23095



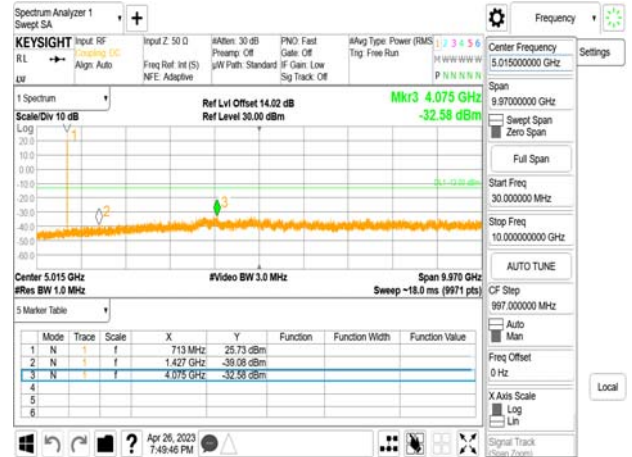
Band12\_3MHz\_QPSK\_RB1\_0\_0\_CH23095



Band12\_1.4MHz\_QPSK\_RB1\_0\_0\_CH23173



Band12\_3MHz\_QPSK\_RB1\_0\_0\_CH23165

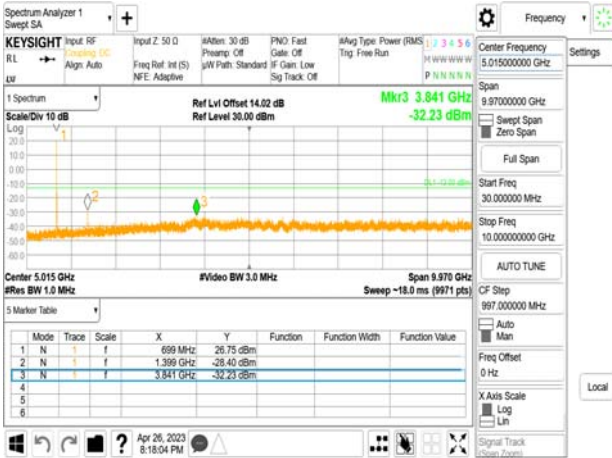


Unless otherwise stated the results shown in this test report refer only to the sample(s) tested and such sample(s) are retained for 90 days only.

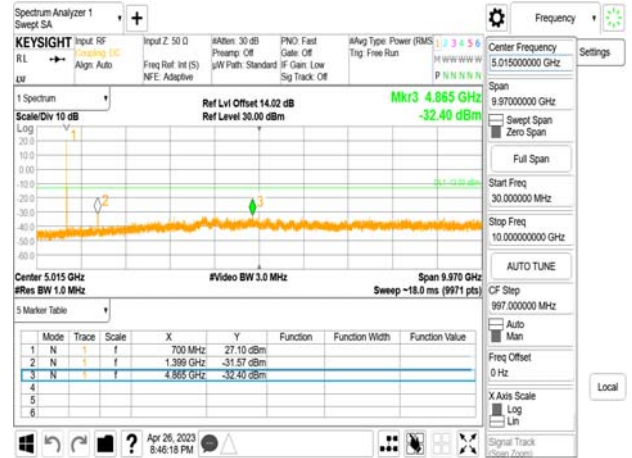
除非另有說明，此報告結果僅對測試之樣品負責，同時此樣品僅保留90天。本報告未經本公司書面許可，不可部份複製。

This document is issued by the Company subject to its General Conditions of Service printed overleaf, available on request or accessible at <http://www.sgs.com.tw/Terms-and-Conditions> and for electronic format documents, subject to Terms and Conditions for Electronic Documents at <http://www.sgs.com.tw/Terms-and-Conditions>. Attention is drawn to the limitation of liability, indemnification and jurisdiction issues defined therein. Any holder of this document is advised that information contained hereon reflects the Company's findings at the time of its intervention only and within the limits of Client's instructions, if any. The Company's sole responsibility is to its Client and this document does not exonerate parties to a transaction from exercising all their rights and obligations under the transaction documents. This document cannot be reproduced except in full, without prior written approval of the Company. Any unauthorized alteration, forgery or falsification of the content or appearance of this document is unlawful and offenders may be prosecuted to the fullest extent of the law.

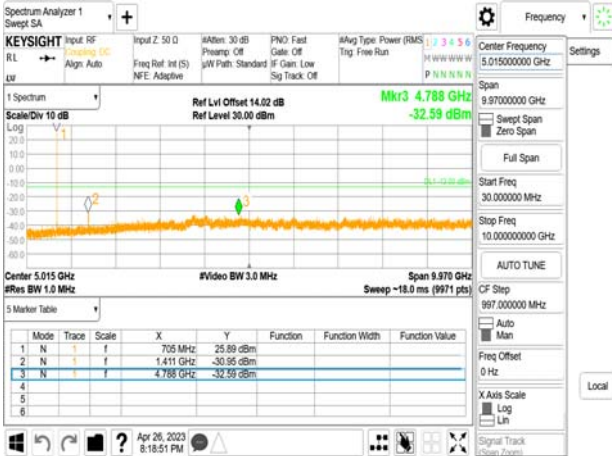
Band12\_5MHz\_QPSK\_RB1\_0\_0\_CH23035



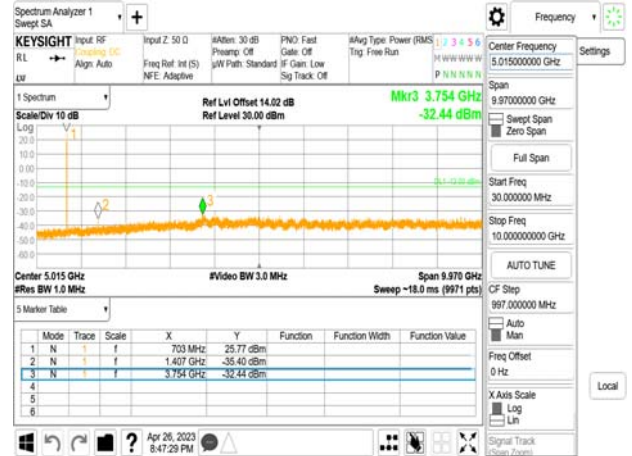
Band12\_10MHz\_QPSK\_RB1\_0\_0\_CH23060



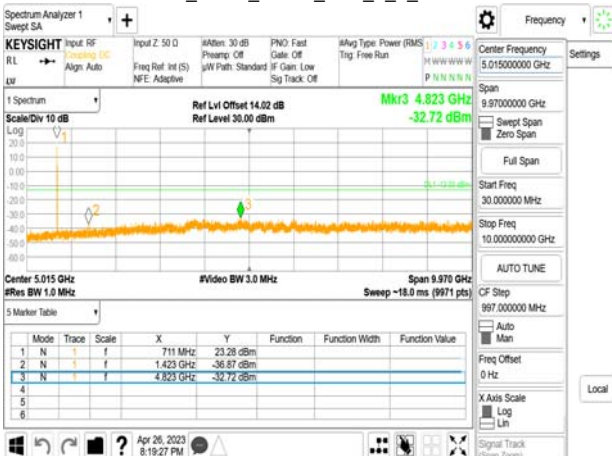
Band12\_5MHz\_QPSK\_RB1\_0\_0\_CH23095



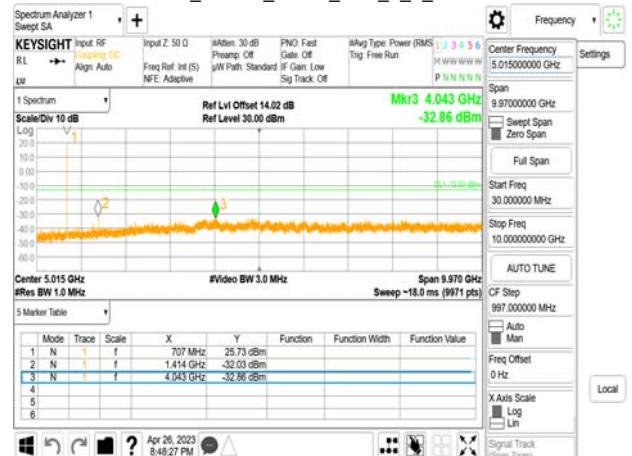
Band12\_10MHz\_QPSK\_RB1\_0\_0\_CH23095



Band12\_5MHz\_QPSK\_RB1\_0\_0\_CH23155



Band12\_10MHz\_QPSK\_RB1\_0\_0\_CH23130



Unless otherwise stated the results shown in this test report refer only to the sample(s) tested and such sample(s) are retained for 90 days only.

除非另有說明，此報告結果僅對測試之樣品負責，同時此樣品僅保留90天。本報告未經本公司書面許可，不可部份複製。

This document is issued by the Company subject to its General Conditions of Service printed overleaf, available on request or accessible at <http://www.sgs.com.tw/Terms-and-Conditions> and for electronic format documents, subject to Terms and Conditions for Electronic Documents at <http://www.sgs.com.tw/Terms-and-Conditions>. Attention is drawn to the limitation of liability, indemnification and jurisdiction issues defined therein. Any holder of this document is advised that information contained hereon reflects the Company's findings at the time of its intervention only and within the limits of Client's instructions, if any. The Company's sole responsibility is to its Client and this document does not exonerate parties to a transaction from exercising all their rights and obligations under the transaction documents. This document cannot be reproduced except in full, without prior written approval of the Company. Any unauthorized alteration, forgery or falsification of the content or appearance of this document is unlawful and offenders may be prosecuted to the fullest extent of the law.

## 10 FIELD STRENGTH OF SPURIOUS RADIATION MEASUREMENT

### 10.1 Standard Applicable

According to FCC §2.1053,

**FCC§24.238(a), §27.53(h)**

**RSS-130 §4.7, RSS-133 §6.5.1, RSS-139 §6.6**

Out of band emissions. The power of any emission outside of the authorized operating frequency ranges must be attenuated below the transmitting power (P) by a factor of at least  $43 + 10 \log(P)$  dB.

#### **FCC §27.53(g)**

Compliance for operations in the 600 MHz, 698-746 MHz, 746-758 MHz and the 776-788 MHz band with this provision is based on the use of measurement instrumentation employing a resolution bandwidth of 100 kilohertz or greater. However, in the 100 kilohertz bands immediately outside and adjacent to a licensee's frequency block, a resolution bandwidth of at least 30 kHz may be employed.

(2) On any frequency outside the 776-788 MHz band, the power of any emission shall be attenuated outside the band below the transmitter power (P) by at least  $43 + 10 \log(P)$  dB;

(3) On all frequencies between 763-775 MHz and 793-805 MHz, by a factor not less than  $76 + 10 \log(P)$  dB in a 6.25 kHz band segment, for base and fixed stations;

(4) On all frequencies between 763-775 MHz and 793-805 MHz, by a factor not less than  $65 + 10 \log(P)$  dB in a 6.25 kHz band segment, for mobile and portable stations;

#### **RSS-130 §4.7.1**

Compliance for operations in the 617-652 MHz, 663-698 MHz, 698-756 MHz and the 777-787 MHz band, the unwanted emissions in any 100 kHz bandwidth on any frequency outside the low frequency edge and the high frequency edge of each frequency block range(s), shall be attenuated below the transmitter power, P (dBW), by at least  $43 + 10 \log_{10} p$  (watts), dB. However, in the 100 kHz band immediately outside of the equipment's frequency block range, a resolution bandwidth of 30 kHz may be employed.

#### **FCC §27.53(h)(1)**

(h) *AWS emission limits*—(1) *General protection levels*. Except as otherwise specified below, for operations in the 1695-1710 MHz, 1710-1755 MHz, 1755-1780 MHz, 1915-1920 MHz, 1995-2000 MHz, 2000-2020 MHz, 2110-2155 MHz, 2155-2180 MHz, and 2180-2200 bands, the power of any emission outside a licensee's frequency block shall be attenuated below the transmitter power (P) in watts by at least  $43 + 10 \log_{10}(P)$  dB.

#### **ISED RSS-133 §6.5.1**

Equipment shall comply with the limits in (i) and (ii) below.

- i. In the 1.0 MHz bands immediately outside and adjacent to the equipment's operating frequency block, the emission power per any 1% of the emission bandwidth shall be attenuated (in dB) below the transmitter output power P (dBW) by at least  $43 + 10 \log_{10} p$  (watts).
- ii. After the first 1.0 MHz, the emission power in any 1 MHz bandwidth shall be attenuated (in dB) below the transmitter output power P (dBW) by at least  $43 + 10 \log_{10} p$  (watts). If the measurement is performed using 1% of the emission bandwidth, power integration over 1.0 MHz is required.

#### **RSS-139 §6.6**

In the first 1.0 MHz bands immediately outside and adjacent to the equipment's smallest operating frequency block, Footnote 2 which can contain the equipment's occupied bandwidth, the emission

Unless otherwise stated the results shown in this test report refer only to the sample(s) tested and such sample(s) are retained for 90 days only.  
除非另有說明，此報告結果僅對測試之樣品負責，同時此樣品僅保留90天。本報告未經本公司書面許可，不可部份複製。

This document is issued by the Company subject to its General Conditions of Service printed overleaf, available on request or accessible at <http://www.sgs.com.tw/Terms-and-Conditions>, and for electronic format documents, subject to Terms and Conditions for Electronic Documents at <http://www.sgs.com.tw/Terms-and-Conditions>. Attention is drawn to the limitation of liability, indemnification and jurisdiction issues defined therein. Any holder of this document is advised that information contained hereon reflects the Company's findings at the time of its intervention only and within the limits of Client's instructions, if any. The Company's sole responsibility is to its Client and this document does not exonerate parties to a transaction from exercising all their rights and obligations under the transaction documents. This document cannot be reproduced except in full, without prior written approval of the Company. Any unauthorized alteration, forgery or falsification of the content or appearance of this document is unlawful and offenders may be prosecuted to the fullest extent of the law.

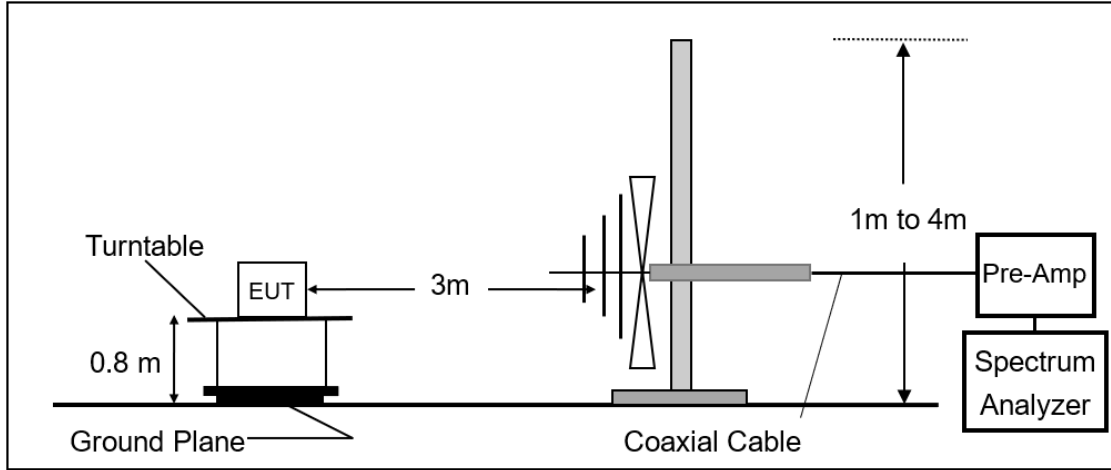
power per any 1% of the emission bandwidth shall be attenuated below the transmitter output power P (in dBW) by at least  $43 + 10 \log_{10} p$  (watts) dB.

After the first 1.0 MHz outside the equipment's smallest operating frequency block, which can contain the equipment's occupied bandwidth, the emission power in any 1 MHz bandwidth shall be attenuated below the transmitter output power P (in dBW) by at least  $43 + 10 \log_{10} p$  (watts) dB.

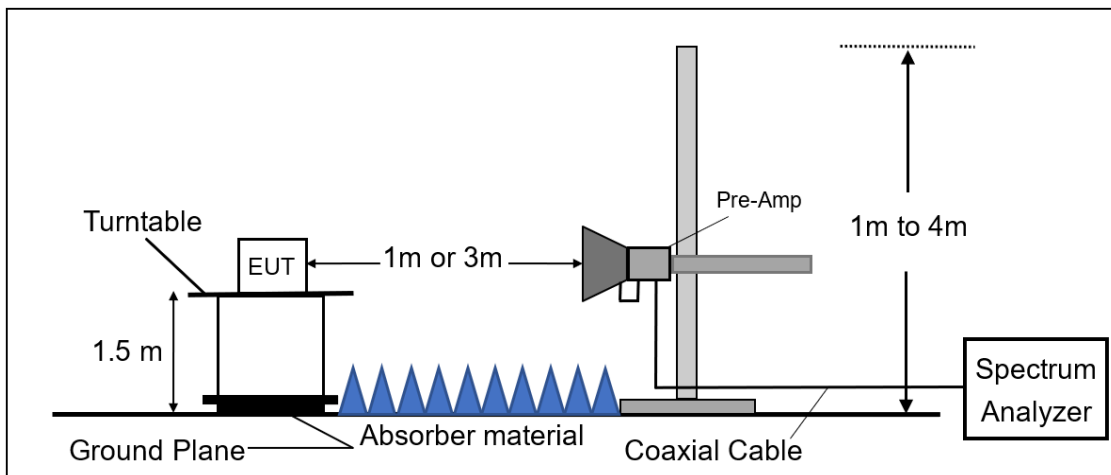
Unless otherwise stated the results shown in this test report refer only to the sample(s) tested and such sample(s) are retained for 90 days only.  
除非另有說明，此報告結果僅對測試之樣品負責，同時此樣品僅保留90天。本報告未經本公司書面許可，不可部份複製。

This document is issued by the Company subject to its General Conditions of Service printed overleaf, available on request or accessible at <http://www.sgs.com.tw/Terms-and-Conditions> and for electronic format documents, subject to Terms and Conditions for Electronic Documents at <http://www.sgs.com.tw/Terms-and-Conditions>. Attention is drawn to the limitation of liability, indemnification and jurisdiction issues defined therein. Any holder of this document is advised that information contained hereon reflects the Company's findings at the time of its intervention only and within the limits of Client's instructions, if any. The Company's sole responsibility is to its Client and this document does not exonerate parties to a transaction from exercising all their rights and obligations under the transaction documents. This document cannot be reproduced except in full, without prior written approval of the Company. Any unauthorized alteration, forgery or falsification of the content or appearance of this document is unlawful and offenders may be prosecuted to the fullest extent of the law.

Radiated Emission Test Set-Up, Frequency From 30MHz to 1000MHz.



Radiated Emission Test Set-Up, Frequency Above 1GHz.



Unless otherwise stated the results shown in this test report refer only to the sample(s) tested and such sample(s) are retained for 90 days only.

除非另有說明，此報告結果僅對測試之樣品負責，同時此樣品僅保留90天。本報告未經本公司書面許可，不可部份複製。

This document is issued by the Company subject to its General Conditions of Service printed overleaf, available on request or accessible at <http://www.sgs.com.tw/Terms-and-Conditions> and for electronic format documents, subject to Terms and Conditions for Electronic Documents at <http://www.sgs.com.tw/Terms-and-Conditions>. Attention is drawn to the limitation of liability, indemnification and jurisdiction issues defined therein. Any holder of this document is advised that information contained hereon reflects the Company's findings at the time of its intervention only and within the limits of Client's instructions, if any. The Company's sole responsibility is to its Client and this document does not exonerate parties to a transaction from exercising all their rights and obligations under the transaction documents. This document cannot be reproduced except in full, without prior written approval of the Company. Any unauthorized alteration, forgery or falsification of the content or appearance of this document is unlawful and offenders may be prosecuted to the fullest extent of the law.

### 10.3 Measurement Procedure:

The EUT was placed on a non-conductive table; the measurement antenna was placed at a distance of 3 meters from the EUT. During the tests, the antenna height and the EUT azimuth were varied in order to identify the maximum level of emissions from the EUT. This maximization process was repeated with the EUT positioned in each of its three orthogonal orientations.

The frequency range up to tenth harmonic was investigated for each of three fundamental frequencies (low, middle and high channels). Once spurious emission was identified, the power of the emission was determined using the substitution method.

The spurious emissions attenuation was calculated as the difference between radiated power at the fundamental frequency and the spurious emissions frequency.

ERP (dBm) = SG Level(dBm) + Antenna Gain(dBd) + Cable Loss(dB)

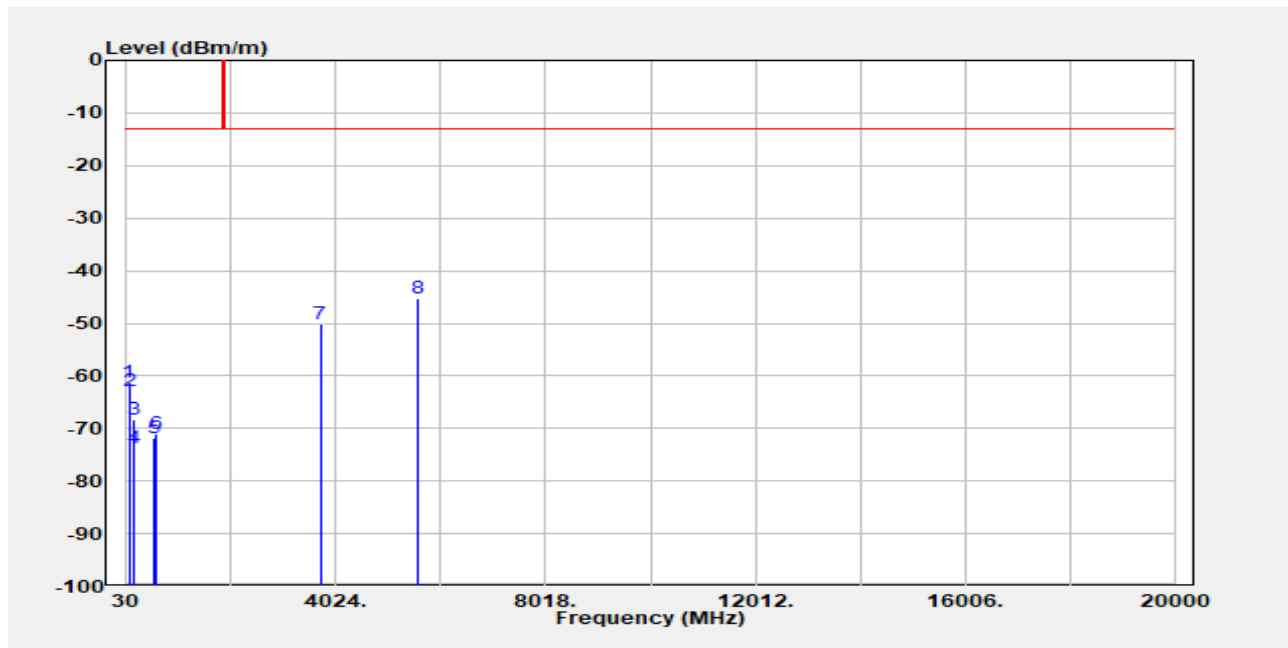
EIRP (dBm) = SG Level(dBm) + Antenna Gain(dBi) + Cable Loss(dB)

Unless otherwise stated the results shown in this test report refer only to the sample(s) tested and such sample(s) are retained for 90 days only.  
除非另有說明，此報告結果僅對測試之樣品負責，同時此樣品僅保留90天。本報告未經本公司書面許可，不可部份複製。

This document is issued by the Company subject to its General Conditions of Service printed overleaf, available on request or accessible at <http://www.sgs.com.tw/Terms-and-Conditions> and for electronic format documents, subject to Terms and Conditions for Electronic Documents at <http://www.sgs.com.tw/Terms-and-Conditions>. Attention is drawn to the limitation of liability, indemnification and jurisdiction issues defined therein. Any holder of this document is advised that information contained hereon reflects the Company's findings at the time of its intervention only and within the limits of Client's instructions, if any. The Company's sole responsibility is to its Client and this document does not exonerate parties to a transaction from exercising all their rights and obligations under the transaction documents. This document cannot be reproduced except in full, without prior written approval of the Company. Any unauthorized alteration, forgery or falsification of the content or appearance of this document is unlawful and offenders may be prosecuted to the fullest extent of the law.

### 10.4 Measurement Result:

Report Number	:TERF2304000922ER	Test Site	:SAC 2
Operation Mode	:CAT-M1 B2	Test Date	:2023-05-02
Test Mode	:Tx	Temp./Humi.	:23.7/67
EUT Pol	:E2 Plane	Antenna Pol.	:Vertical
Test Frequency	:1860 MHz	Engineer	:Ricky Chen



Freq. MHz	EIRP/ERP dBm	SG Output Level dBm	Antenna Gain dBi/dBd	Cable Loss dB	Limit dBm	Margin dB
73.650	-61.36	-57.45	-3.00	-0.91	-13.00	-48.36
100.810	-62.83	-63.10	1.34	-1.07	-13.00	-49.83
153.190	-68.21	-67.52	0.59	-1.29	-13.00	-55.21
183.260	-73.64	-76.28	4.09	-1.45	-13.00	-60.64
549.920	-71.88	-76.25	6.74	-2.37	-13.00	-58.88
601.330	-71.12	-74.66	6.08	-2.55	-13.00	-58.12
3720.000	-50.23	-55.99	12.40	-6.64	-13.00	-37.23
5580.000	-45.24	-49.87	13.02	-8.39	-13.00	-32.24

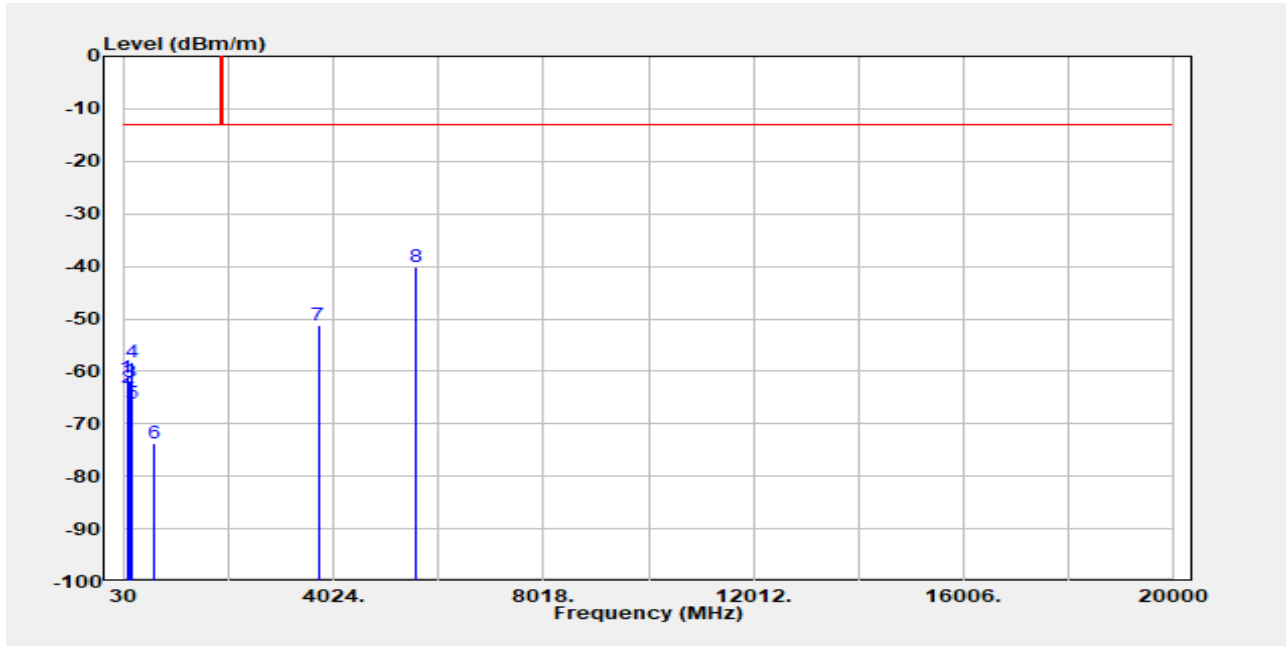
Unless otherwise stated the results shown in this test report refer only to the sample(s) tested and such sample(s) are retained for 90 days only.

除非另有說明，此報告結果僅對測試之樣品負責，同時此樣品僅保留90天。本報告未經本公司書面許可，不可部份複製。

This document is issued by the Company subject to its General Conditions of Service printed overleaf, available on request or accessible at <http://www.sgs.com.tw/Terms-and-Conditions> and for electronic format documents, subject to Terms and Conditions for Electronic Documents at <http://www.sgs.com.tw/Terms-and-Conditions>. Attention is drawn to the limitation of liability, indemnification and jurisdiction issues defined therein. Any holder of this document is advised that information contained hereon reflects the Company's findings at the time of its intervention only and within the limits of Client's instructions, if any. The Company's sole responsibility is to its Client and this document does not exonerate parties to a transaction from exercising all their rights and obligations under the transaction documents. This document cannot be reproduced except in full, without prior written approval of the Company. Any unauthorized alteration, forgery or falsification of the content or appearance of this document is unlawful and offenders may be prosecuted to the fullest extent of the law.

Report Number :TERF2304000922ER  
Operation Mode :CAT-M1 B2  
Test Mode :Tx  
EUT Pol :E2 Plane  
Test Frequency :1860 MHz

Test Site :SAC 2  
Test Date :2023-05-02  
Temp./Humi. :23.7/67  
Antenna Pol. :Horizontal  
Engineer :Ricky Chen



Freq. MHz	EIRP/ERP dBm	SG Output Level dBm	Antenna Gain dBi/dBd	Cable Loss dB	Limit dBm	Margin dB
73.650	-61.16	-57.25	-3.00	-0.91	-13.00	-48.16
101.780	-63.12	-63.35	1.30	-1.08	-13.00	-50.12
127.000	-62.18	-61.73	0.81	-1.26	-13.00	-49.18
154.160	-58.15	-57.33	0.46	-1.27	-13.00	-45.15
182.290	-66.02	-68.55	3.97	-1.45	-13.00	-53.02
600.360	-73.68	-77.22	6.09	-2.54	-13.00	-60.68
3720.000	-51.14	-56.90	12.40	-6.64	-13.00	-38.14
5580.000	-40.06	-44.69	13.02	-8.39	-13.00	-27.06

Unless otherwise stated the results shown in this test report refer only to the sample(s) tested and such sample(s) are retained for 90 days only.

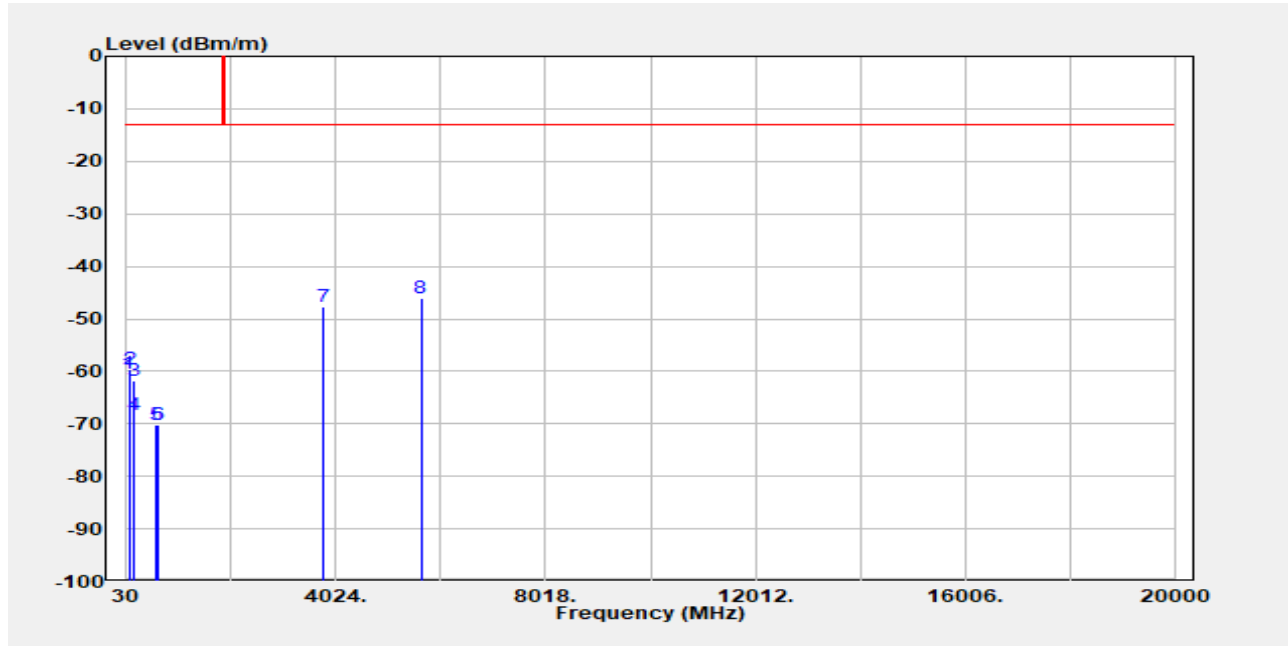
除非另有說明，此報告結果僅對測試之樣品負責，同時此樣品僅保留90天。本報告未經本公司書面許可，不可部份複製。

This document is issued by the Company subject to its General Conditions of Service printed overleaf, available on request or accessible at <http://www.sgs.com.tw/Terms-and-Conditions> and for electronic format documents, subject to Terms and Conditions for Electronic Documents at <http://www.sgs.com.tw/Terms-and-Conditions>. Attention is drawn to the limitation of liability, indemnification and jurisdiction issues defined therein. Any holder of this document is advised that information contained hereon reflects the Company's findings at the time of its intervention only and within the limits of Client's instructions, if any. The Company's sole responsibility is to its Client and this document does not exonerate parties to a transaction from exercising all their rights and obligations under the transaction documents. This document cannot be reproduced except in full, without prior written approval of the Company. Any unauthorized alteration, forgery or falsification of the content or appearance of this document is unlawful and offenders may be prosecuted to the fullest extent of the law.



Report Number :TERF2304000922ER  
Operation Mode :CAT-M1 B2  
Test Mode :Tx  
EUT Pol :E2 Plane  
Test Frequency :1880 MHz

Test Site :SAC 2  
Test Date :2023-05-02  
Temp./Humi. :23.7/67  
Antenna Pol. :Vertical  
Engineer :Ricky Chen



Freq. MHz	EIRP/ERP dBm	SG Output Level dBm	Antenna Gain dBi/dBd	Cable Loss dB	Limit dBm	Margin dB
73.650	-60.40	-56.49	-3.00	-0.91	-13.00	-47.40
101.780	-59.65	-59.87	1.30	-1.08	-13.00	-46.65
153.190	-61.82	-61.12	0.59	-1.29	-13.00	-48.82
182.290	-68.36	-70.89	3.97	-1.45	-13.00	-55.36
591.630	-70.24	-73.54	6.21	-2.92	-13.00	-57.24
640.130	-70.18	-73.70	6.05	-2.53	-13.00	-57.18
3760.000	-47.71	-53.37	12.36	-6.69	-13.00	-34.71
5640.000	-45.98	-50.74	13.18	-8.42	-13.00	-32.98

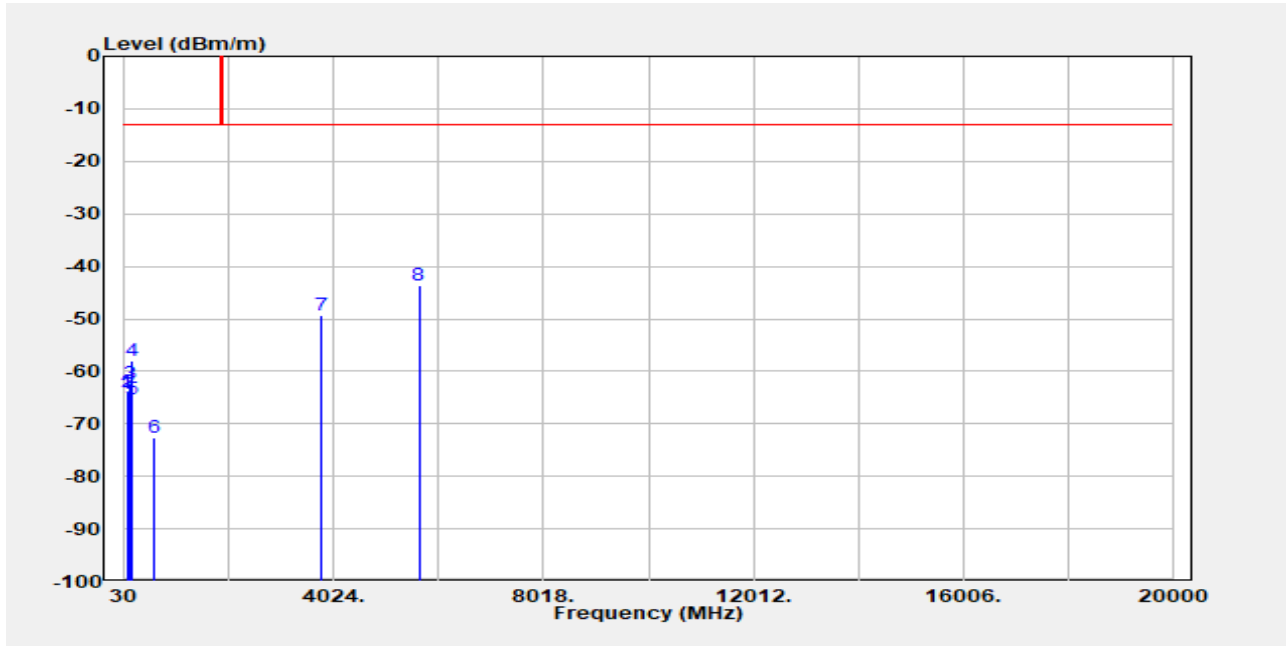
Unless otherwise stated the results shown in this test report refer only to the sample(s) tested and such sample(s) are retained for 90 days only.

除非另有說明，此報告結果僅對測試之樣品負責，同時此樣品僅保留90天。本報告未經本公司書面許可，不可部份複製。

This document is issued by the Company subject to its General Conditions of Service printed overleaf, available on request or accessible at <http://www.sgs.com.tw/Terms-and-Conditions> and for electronic format documents, subject to Terms and Conditions for Electronic Documents at <http://www.sgs.com.tw/Terms-and-Conditions>. Attention is drawn to the limitation of liability, indemnification and jurisdiction issues defined therein. Any holder of this document is advised that information contained hereon reflects the Company's findings at the time of its intervention only and within the limits of Client's instructions, if any. The Company's sole responsibility is to its Client and this document does not exonerate parties to a transaction from exercising all their rights and obligations under the transaction documents. This document cannot be reproduced except in full, without prior written approval of the Company. Any unauthorized alteration, forgery or falsification of the content or appearance of this document is unlawful and offenders may be prosecuted to the fullest extent of the law.

Report Number :TERF2304000922ER  
Operation Mode :CAT-M1 B2  
Test Mode :Tx  
EUT Pol :E2 Plane  
Test Frequency :1880 MHz

Test Site :SAC 2  
Test Date :2023-05-02  
Temp./Humi. :23.7/67  
Antenna Pol. :Horizontal  
Engineer :Ricky Chen



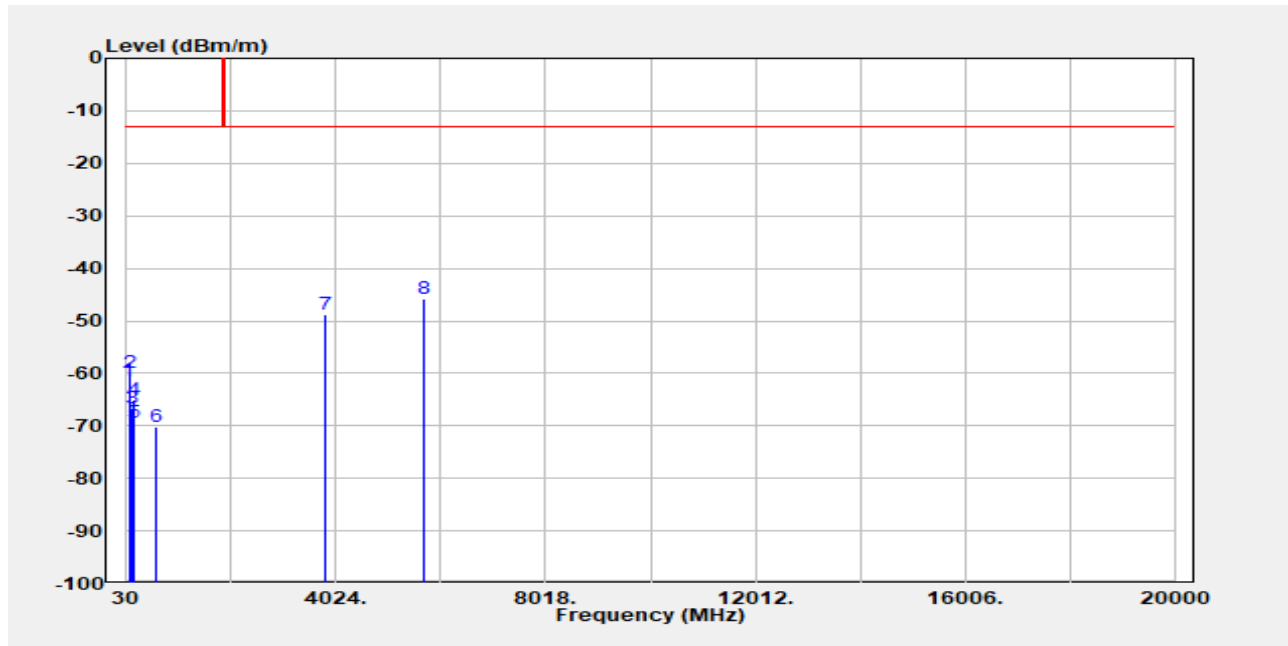
Freq. MHz	EIRP/ERP dBm	SG Output Level dBm	Antenna Gain dBi/dBd	Cable Loss dB	Limit dBm	Margin dB
73.650	-64.23	-60.32	-3.00	-0.91	-13.00	-51.23
102.750	-63.98	-64.27	1.37	-1.08	-13.00	-50.98
139.610	-62.37	-61.53	0.43	-1.26	-13.00	-49.37
152.220	-58.04	-57.16	0.43	-1.30	-13.00	-45.04
183.260	-65.36	-68.00	4.09	-1.45	-13.00	-52.36
590.660	-72.61	-75.88	6.23	-2.96	-13.00	-59.61
3760.000	-49.29	-54.95	12.36	-6.69	-13.00	-36.29
5640.000	-43.61	-48.37	13.18	-8.42	-13.00	-30.61

Unless otherwise stated the results shown in this test report refer only to the sample(s) tested and such sample(s) are retained for 90 days only.

除非另有說明，此報告結果僅對測試之樣品負責，同時此樣品僅保留90天。本報告未經本公司書面許可，不可部份複製。  
This document is issued by the Company subject to its General Conditions of Service printed overleaf, available on request or accessible at <http://www.sgs.com.tw/Terms-and-Conditions> and for electronic format documents, subject to Terms and Conditions for Electronic Documents at <http://www.sgs.com.tw/Terms-and-Conditions>. Attention is drawn to the limitation of liability, indemnification and jurisdiction issues defined therein. Any holder of this document is advised that information contained hereon reflects the Company's findings at the time of its intervention only and within the limits of Client's instructions, if any. The Company's sole responsibility is to its Client and this document does not exonerate parties to a transaction from exercising all their rights and obligations under the transaction documents. This document cannot be reproduced except in full, without prior written approval of the Company. Any unauthorized alteration, forgery or falsification of the content or appearance of this document is unlawful and offenders may be prosecuted to the fullest extent of the law.

Report Number :TERF2304000922ER  
Operation Mode :CAT-M1 B2  
Test Mode :Tx  
EUT Pol :E2 Plane  
Test Frequency :1900 MHz

Test Site :SAC 2  
Test Date :2023-05-02  
Temp./Humi. :23.7/67  
Antenna Pol. :Vertical  
Engineer :Ricky Chen



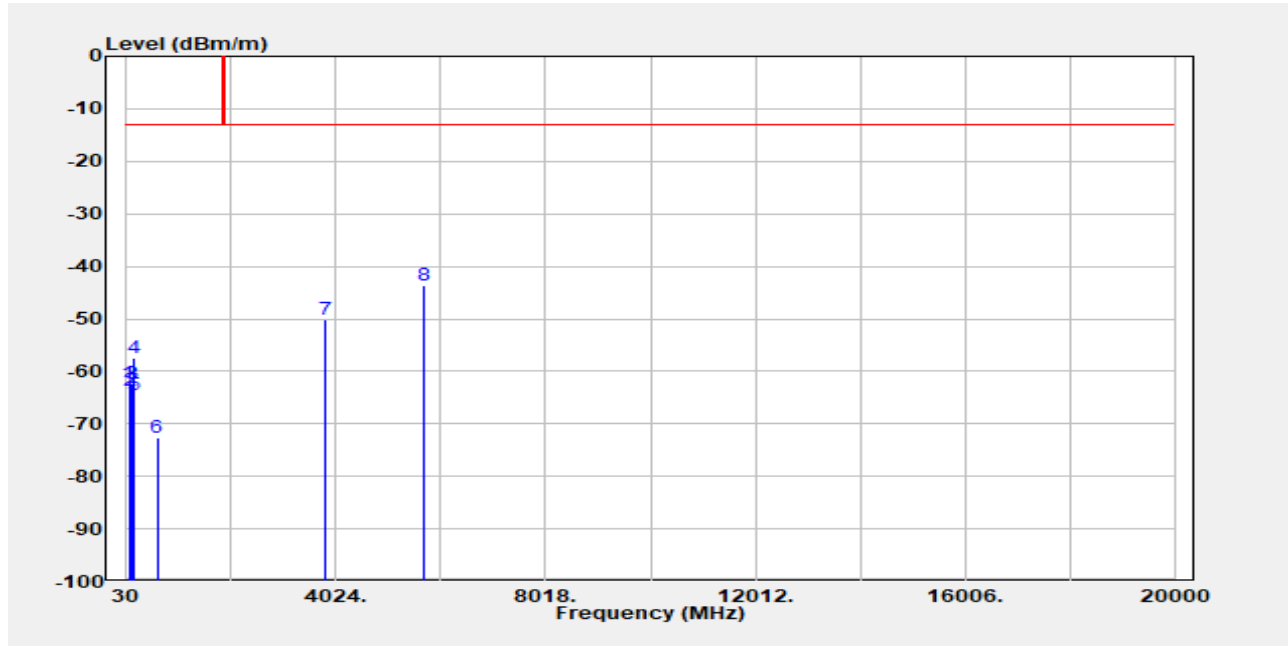
Freq. MHz	EIRP/ERP dBm	SG Output Level dBm	Antenna Gain dBi/dBd	Cable Loss dB	Limit dBm	Margin dB
73.650	-61.63	-57.72	-3.00	-0.91	-13.00	-48.63
101.780	-59.93	-60.15	1.30	-1.08	-13.00	-46.93
129.910	-66.68	-66.01	0.62	-1.30	-13.00	-53.68
155.130	-65.00	-64.11	0.36	-1.26	-13.00	-52.00
182.290	-69.33	-71.86	3.97	-1.45	-13.00	-56.33
600.360	-70.12	-73.67	6.09	-2.54	-13.00	-57.12
3800.000	-48.77	-54.22	12.20	-6.75	-13.00	-35.77
5700.000	-45.78	-50.31	13.00	-8.47	-13.00	-32.78

Unless otherwise stated the results shown in this test report refer only to the sample(s) tested and such sample(s) are retained for 90 days only.  
除非另有說明，此報告結果僅對測試之樣品負責，同時此樣品僅保留90天。本報告未經本公司書面許可，不可部份複製。

This document is issued by the Company subject to its General Conditions of Service printed overleaf, available on request or accessible at <http://www.sgs.com.tw/Terms-and-Conditions> and for electronic format documents, subject to Terms and Conditions for Electronic Documents at <http://www.sgs.com.tw/Terms-and-Conditions>. Attention is drawn to the limitation of liability, indemnification and jurisdiction issues defined therein. Any holder of this document is advised that information contained hereon reflects the Company's findings at the time of its intervention only and within the limits of Client's instructions, if any. The Company's sole responsibility is to its Client and this document does not exonerate parties to a transaction from exercising all their rights and obligations under the transaction documents. This document cannot be reproduced except in full, without prior written approval of the Company. Any unauthorized alteration, forgery or falsification of the content or appearance of this document is unlawful and offenders may be prosecuted to the fullest extent of the law.

Report Number :TERF2304000922ER  
Operation Mode :CAT-M1 B2  
Test Mode :Tx  
EUT Pol :E2 Plane  
Test Frequency :1900 MHz

Test Site :SAC 2  
Test Date :2023-05-02  
Temp./Humi. :23.7/67  
Antenna Pol. :Horizontal  
Engineer :Ricky Chen



Freq. MHz	EIRP/ERP dBm	SG Output Level dBm	Antenna Gain dBi/dBd	Cable Loss dB	Limit dBm	Margin dB
73.650	-62.20	-58.29	-3.00	-0.91	-13.00	-49.20
101.780	-63.60	-63.82	1.30	-1.08	-13.00	-50.60
128.940	-62.30	-61.76	0.74	-1.28	-13.00	-49.30
154.160	-57.40	-56.58	0.46	-1.27	-13.00	-44.40
184.230	-64.57	-67.30	4.19	-1.46	-13.00	-51.57
610.060	-72.66	-76.12	6.04	-2.58	-13.00	-59.66
3800.000	-50.15	-55.60	12.20	-6.75	-13.00	-37.15
5700.000	-43.52	-48.05	13.00	-8.47	-13.00	-30.52

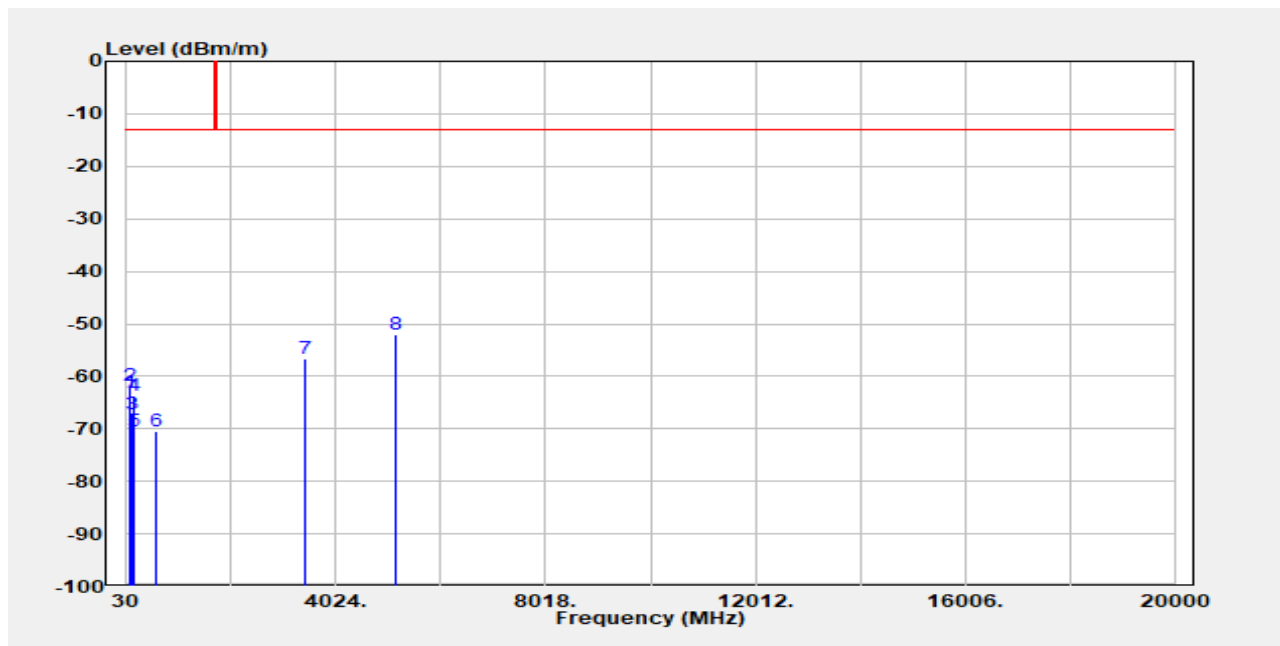
Unless otherwise stated the results shown in this test report refer only to the sample(s) tested and such sample(s) are retained for 90 days only.

除非另有說明，此報告結果僅對測試之樣品負責，同時此樣品僅保留90天。本報告未經本公司書面許可，不可部份複製。

This document is issued by the Company subject to its General Conditions of Service printed overleaf, available on request or accessible at <http://www.sgs.com.tw/Terms-and-Conditions> and for electronic format documents, subject to Terms and Conditions for Electronic Documents at <http://www.sgs.com.tw/Terms-and-Conditions>. Attention is drawn to the limitation of liability, indemnification and jurisdiction issues defined therein. Any holder of this document is advised that information contained hereon reflects the Company's findings at the time of its intervention only and within the limits of Client's instructions, if any. The Company's sole responsibility is to its Client and this document does not exonerate parties to a transaction from exercising all their rights and obligations under the transaction documents. This document cannot be reproduced except in full, without prior written approval of the Company. Any unauthorized alteration, forgery or falsification of the content or appearance of this document is unlawful and offenders may be prosecuted to the fullest extent of the law.

Report Number :TERF2304000922ER  
Operation Mode :CAT-M1 B4  
Test Mode :Tx  
EUT Pol :E2 Plane  
Test Frequency :1720 MHz

Test Site :SAC 2  
Test Date :2023-05-02  
Temp./Humi. :23.7/67  
Antenna Pol. :Vertical  
Engineer :Ricky Chen



Freq. MHz	EIRP/ERP dBm	SG Output Level dBm	Antenna Gain dBi/dBd	Cable Loss dB	Limit dBm	Margin dB
74.620	-63.27	-59.66	-2.69	-0.92	-13.00	-50.27
100.810	-61.86	-62.13	1.34	-1.07	-13.00	-48.86
135.730	-67.34	-66.64	0.58	-1.28	-13.00	-54.34
157.070	-63.81	-63.13	0.55	-1.23	-13.00	-50.81
182.290	-70.51	-73.04	3.97	-1.45	-13.00	-57.51
597.450	-70.39	-73.85	6.11	-2.65	-13.00	-57.39
3440.000	-56.72	-62.77	12.42	-6.36	-13.00	-43.72
5160.000	-52.14	-56.41	12.24	-7.97	-13.00	-39.14

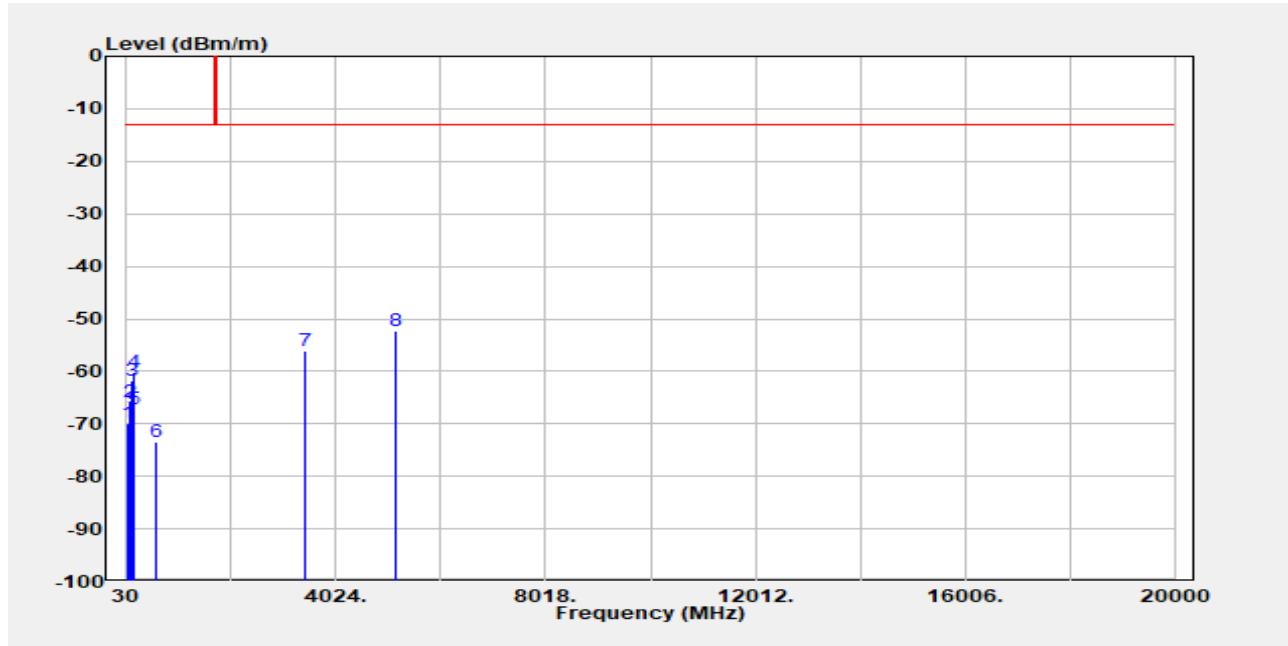
Unless otherwise stated the results shown in this test report refer only to the sample(s) tested and such sample(s) are retained for 90 days only.

除非另有說明，此報告結果僅對測試之樣品負責，同時此樣品僅保留90天。本報告未經本公司書面許可，不可部份複製。

This document is issued by the Company subject to its General Conditions of Service printed overleaf, available on request or accessible at <http://www.sgs.com.tw/Terms-and-Conditions> and for electronic format documents, subject to Terms and Conditions for Electronic Documents at <http://www.sgs.com.tw/Terms-and-Conditions>. Attention is drawn to the limitation of liability, indemnification and jurisdiction issues defined therein. Any holder of this document is advised that information contained hereon reflects the Company's findings at the time of its intervention only and within the limits of Client's instructions, if any. The Company's sole responsibility is to its Client and this document does not exonerate parties to a transaction from exercising all their rights and obligations under the transaction documents. This document cannot be reproduced except in full, without prior written approval of the Company. Any unauthorized alteration, forgery or falsification of the content or appearance of this document is unlawful and offenders may be prosecuted to the fullest extent of the law.

Report Number :TERF2304000922ER  
Operation Mode :CAT-M1 B4  
Test Mode :Tx  
EUT Pol :E2 Plane  
Test Frequency :1720 MHz

Test Site :SAC 2  
Test Date :2023-05-02  
Temp./Humi. :23.7/67  
Antenna Pol. :Horizontal  
Engineer :Ricky Chen



Freq. MHz	EIRP/ERP dBm	SG Output Level dBm	Antenna Gain dBi/dBd	Cable Loss dB	Limit dBm	Margin dB
70.740	-69.97	-64.77	-4.30	-0.89	-13.00	-56.97
102.750	-65.93	-66.22	1.37	-1.08	-13.00	-52.93
139.610	-61.76	-60.92	0.43	-1.26	-13.00	-48.76
155.130	-60.10	-59.20	0.36	-1.26	-13.00	-47.10
183.260	-67.34	-69.98	4.09	-1.45	-13.00	-54.34
597.450	-73.44	-76.89	6.11	-2.65	-13.00	-60.44
3440.000	-56.16	-62.22	12.42	-6.36	-13.00	-43.16
5160.000	-52.21	-56.48	12.24	-7.97	-13.00	-39.21

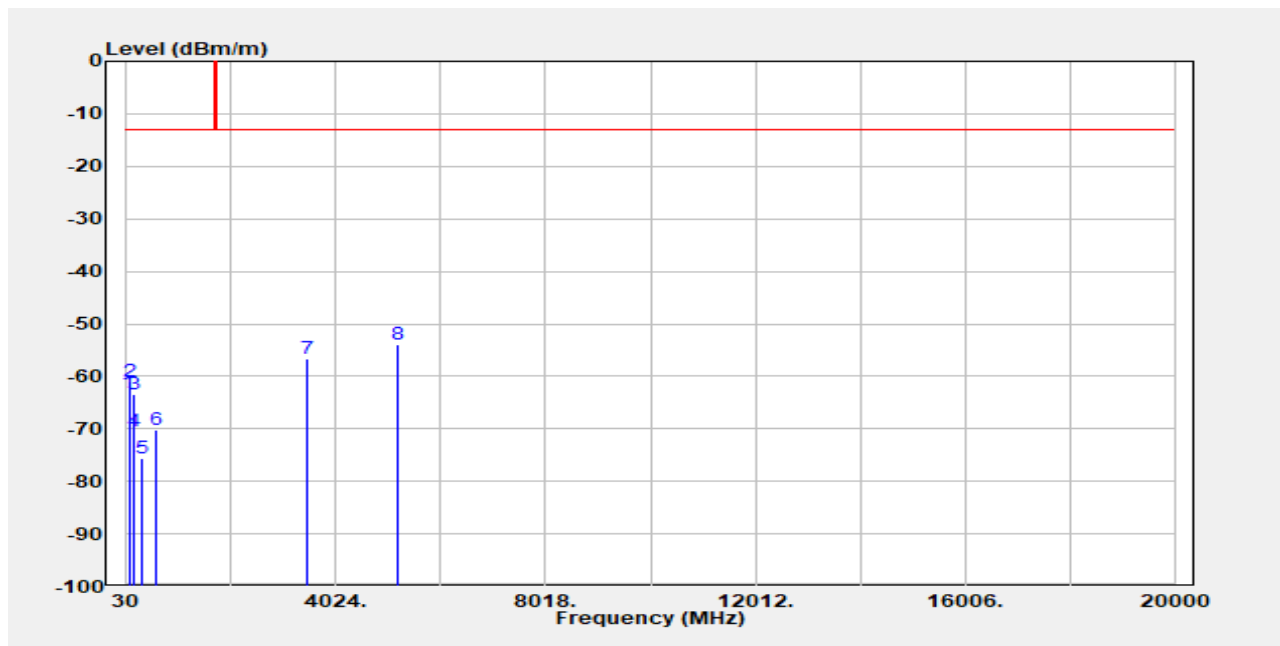
Unless otherwise stated the results shown in this test report refer only to the sample(s) tested and such sample(s) are retained for 90 days only.

除非另有說明，此報告結果僅對測試之樣品負責，同時此樣品僅保留90天。本報告未經本公司書面許可，不可部份複製。

This document is issued by the Company subject to its General Conditions of Service printed overleaf, available on request or accessible at <http://www.sgs.com.tw/Terms-and-Conditions> and for electronic format documents, subject to Terms and Conditions for Electronic Documents at <http://www.sgs.com.tw/Terms-and-Conditions>. Attention is drawn to the limitation of liability, indemnification and jurisdiction issues defined therein. Any holder of this document is advised that information contained hereon reflects the Company's findings at the time of its intervention only and within the limits of Client's instructions, if any. The Company's sole responsibility is to its Client and this document does not exonerate parties to a transaction from exercising all their rights and obligations under the transaction documents. This document cannot be reproduced except in full, without prior written approval of the Company. Any unauthorized alteration, forgery or falsification of the content or appearance of this document is unlawful and offenders may be prosecuted to the fullest extent of the law.

Report Number :TERF2304000922ER  
Operation Mode :CAT-M1 B4  
Test Mode :Tx  
EUT Pol :E2 Plane  
Test Frequency :1732.5 MHz

Test Site :SAC 2  
Test Date :2023-05-02  
Temp./Humi. :23.7/67  
Antenna Pol. :Vertical  
Engineer :Ricky Chen



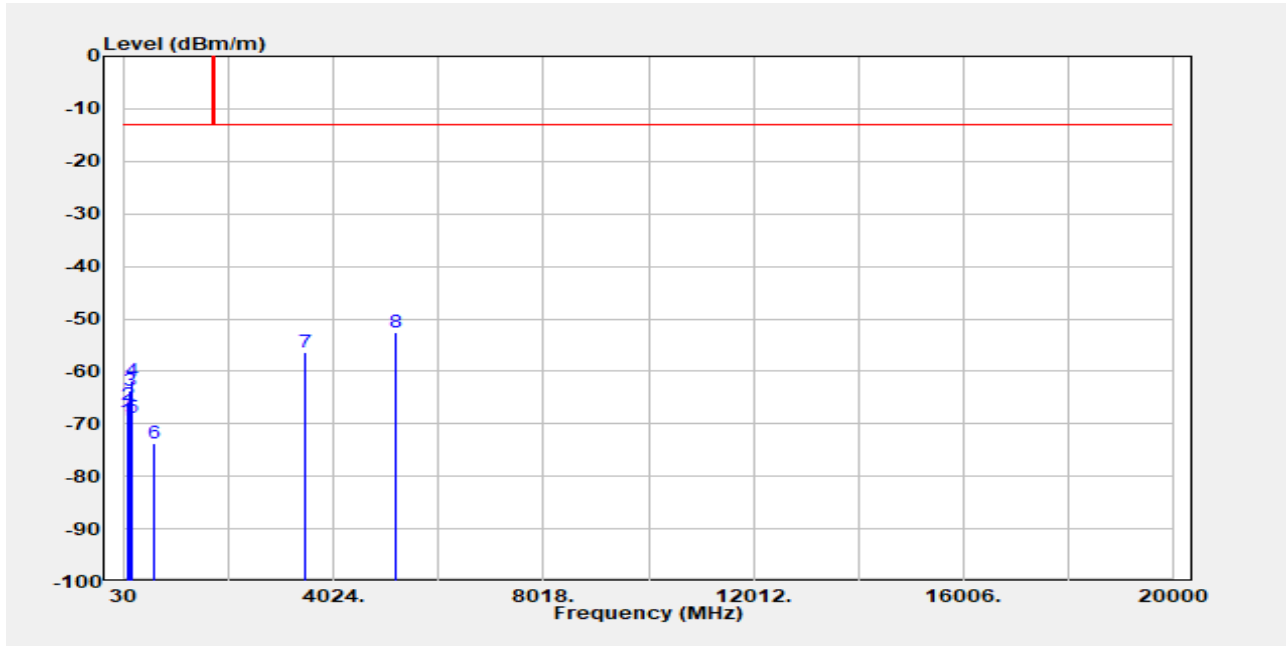
Freq. MHz	EIRP/ERP dBm	SG Output Level dBm	Antenna Gain dBi/dBd	Cable Loss dB	Limit dBm	Margin dB
73.650	-63.08	-59.17	-3.00	-0.91	-13.00	-50.08
102.750	-60.93	-61.22	1.37	-1.08	-13.00	-47.93
154.160	-63.43	-62.61	0.46	-1.27	-13.00	-50.43
186.170	-70.41	-73.47	4.53	-1.47	-13.00	-57.41
333.610	-75.53	-79.84	6.22	-1.92	-13.00	-62.53
604.240	-70.29	-73.80	6.07	-2.56	-13.00	-57.29
3465.000	-56.52	-62.53	12.37	-6.37	-13.00	-43.52
5197.500	-54.03	-58.45	12.39	-7.97	-13.00	-41.03

Unless otherwise stated the results shown in this test report refer only to the sample(s) tested and such sample(s) are retained for 90 days only.

除非另有說明，此報告結果僅對測試之樣品負責，同時此樣品僅保留90天。本報告未經本公司書面許可，不可部份複製。  
This document is issued by the Company subject to its General Conditions of Service printed overleaf, available on request or accessible at <http://www.sgs.com.tw/Terms-and-Conditions> and for electronic format documents, subject to Terms and Conditions for Electronic Documents at <http://www.sgs.com.tw/Terms-and-Conditions>. Attention is drawn to the limitation of liability, indemnification and jurisdiction issues defined therein. Any holder of this document is advised that information contained hereon reflects the Company's findings at the time of its intervention only and within the limits of Client's instructions, if any. The Company's sole responsibility is to its Client and this document does not exonerate parties to a transaction from exercising all their rights and obligations under the transaction documents. This document cannot be reproduced except in full, without prior written approval of the Company. Any unauthorized alteration, forgery or falsification of the content or appearance of this document is unlawful and offenders may be prosecuted to the fullest extent of the law.

Report Number :TERF2304000922ER  
Operation Mode :CAT-M1 B4  
Test Mode :Tx  
EUT Pol :E2 Plane  
Test Frequency :1732.5 MHz

Test Site :SAC 2  
Test Date :2023-05-02  
Temp./Humi. :23.7/67  
Antenna Pol. :Horizontal  
Engineer :Ricky Chen



Freq. MHz	EIRP/ERP dBm	SG Output Level dBm	Antenna Gain dBi/dBd	Cable Loss dB	Limit dBm	Margin dB
73.650	-69.41	-65.50	-3.00	-0.91	-13.00	-56.41
102.750	-66.51	-66.79	1.37	-1.08	-13.00	-53.51
137.670	-63.58	-62.85	0.54	-1.27	-13.00	-50.58
153.190	-61.69	-61.00	0.59	-1.29	-13.00	-48.69
180.350	-68.79	-71.01	3.66	-1.43	-13.00	-55.79
594.540	-73.72	-77.07	6.13	-2.78	-13.00	-60.72
3465.000	-56.24	-62.24	12.37	-6.37	-13.00	-43.24
5197.500	-52.58	-57.00	12.39	-7.97	-13.00	-39.58

Unless otherwise stated the results shown in this test report refer only to the sample(s) tested and such sample(s) are retained for 90 days only.

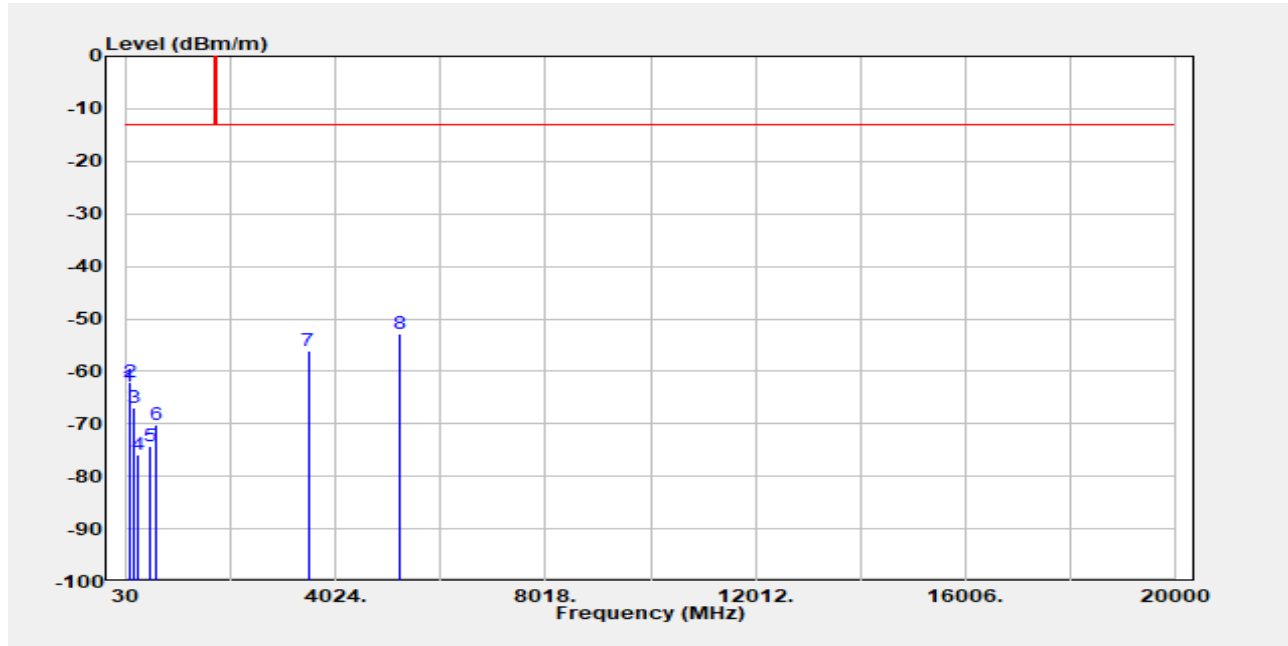
除非另有說明，此報告結果僅對測試之樣品負責，同時此樣品僅保留90天。本報告未經本公司書面許可，不可部份複製。

This document is issued by the Company subject to its General Conditions of Service printed overleaf, available on request or accessible at <http://www.sgs.com.tw/Terms-and-Conditions> and for electronic format documents, subject to Terms and Conditions for Electronic Documents at <http://www.sgs.com.tw/Terms-and-Conditions>. Attention is drawn to the limitation of liability, indemnification and jurisdiction issues defined therein. Any holder of this document is advised that information contained hereon reflects the Company's findings at the time of its intervention only and within the limits of Client's instructions, if any. The Company's sole responsibility is to its Client and this document does not exonerate parties to a transaction from exercising all their rights and obligations under the transaction documents. This document cannot be reproduced except in full, without prior written approval of the Company. Any unauthorized alteration, forgery or falsification of the content or appearance of this document is unlawful and offenders may be prosecuted to the fullest extent of the law.



Report Number :TERF2304000922ER  
Operation Mode :CAT-M1 B4  
Test Mode :Tx  
EUT Pol :E2 Plane  
Test Frequency :1745 MHz

Test Site :SAC 2  
Test Date :2023-05-02  
Temp./Humi. :23.7/67  
Antenna Pol. :Vertical  
Engineer :Ricky Chen



Freq. MHz	EIRP/ERP dBm	SG Output Level dBm	Antenna Gain dBi/dBd	Cable Loss dB	Limit dBm	Margin dB
73.650	-63.00	-59.09	-3.00	-0.91	-13.00	-50.00
101.780	-62.00	-62.23	1.30	-1.08	-13.00	-49.00
159.980	-66.81	-66.44	0.81	-1.18	-13.00	-53.81
245.340	-75.85	-80.19	6.02	-1.69	-13.00	-62.85
484.930	-74.37	-78.31	6.44	-2.50	-13.00	-61.37
594.540	-70.30	-73.65	6.13	-2.78	-13.00	-57.30
3490.000	-56.15	-62.10	12.32	-6.37	-13.00	-43.15
5235.000	-52.85	-57.49	12.68	-8.04	-13.00	-39.85

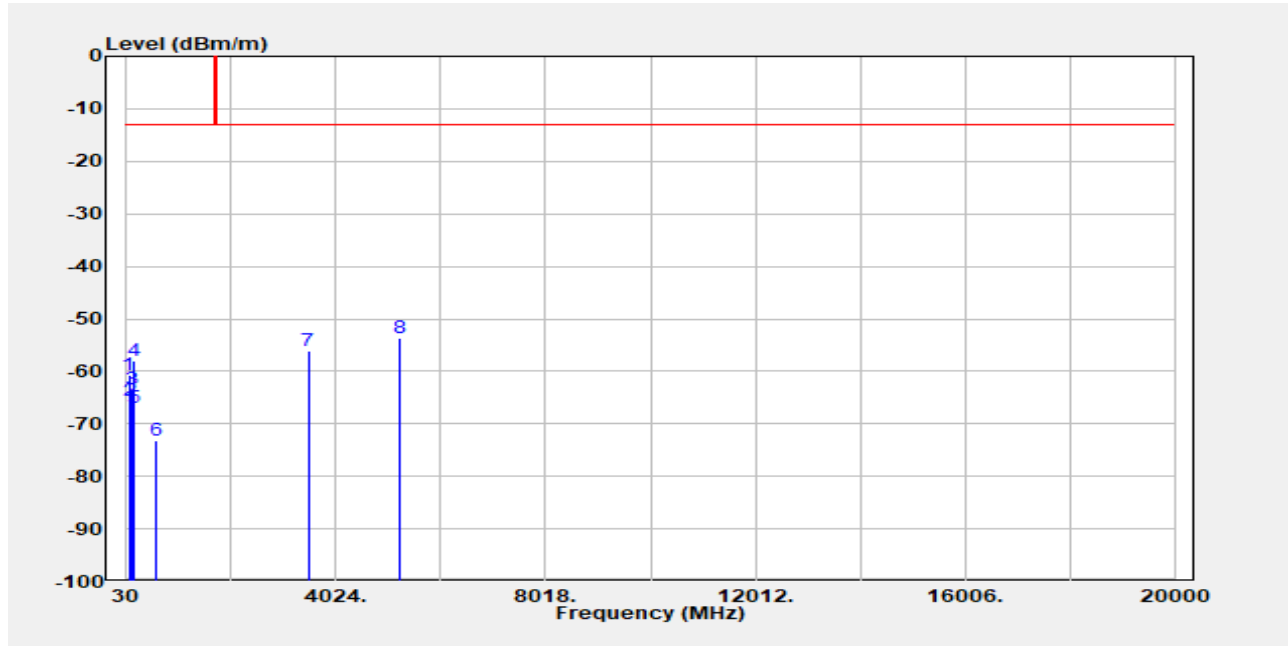
Unless otherwise stated the results shown in this test report refer only to the sample(s) tested and such sample(s) are retained for 90 days only.

除非另有說明，此報告結果僅對測試之樣品負責，同時此樣品僅保留90天。本報告未經本公司書面許可，不可部份複製。

This document is issued by the Company subject to its General Conditions of Service printed overleaf, available on request or accessible at <http://www.sgs.com.tw/Terms-and-Conditions> and for electronic format documents, subject to Terms and Conditions for Electronic Documents at <http://www.sgs.com.tw/Terms-and-Conditions>. Attention is drawn to the limitation of liability, indemnification and jurisdiction issues defined therein. Any holder of this document is advised that information contained hereon reflects the Company's findings at the time of its intervention only and within the limits of Client's instructions, if any. The Company's sole responsibility is to its Client and this document does not exonerate parties to a transaction from exercising all their rights and obligations under the transaction documents. This document cannot be reproduced except in full, without prior written approval of the Company. Any unauthorized alteration, forgery or falsification of the content or appearance of this document is unlawful and offenders may be prosecuted to the fullest extent of the law.

Report Number :TERF2304000922ER  
Operation Mode :CAT-M1 B4  
Test Mode :Tx  
EUT Pol :E2 Plane  
Test Frequency :1745 MHz

Test Site :SAC 2  
Test Date :2023-05-02  
Temp./Humi. :23.7/67  
Antenna Pol. :Horizontal  
Engineer :Ricky Chen



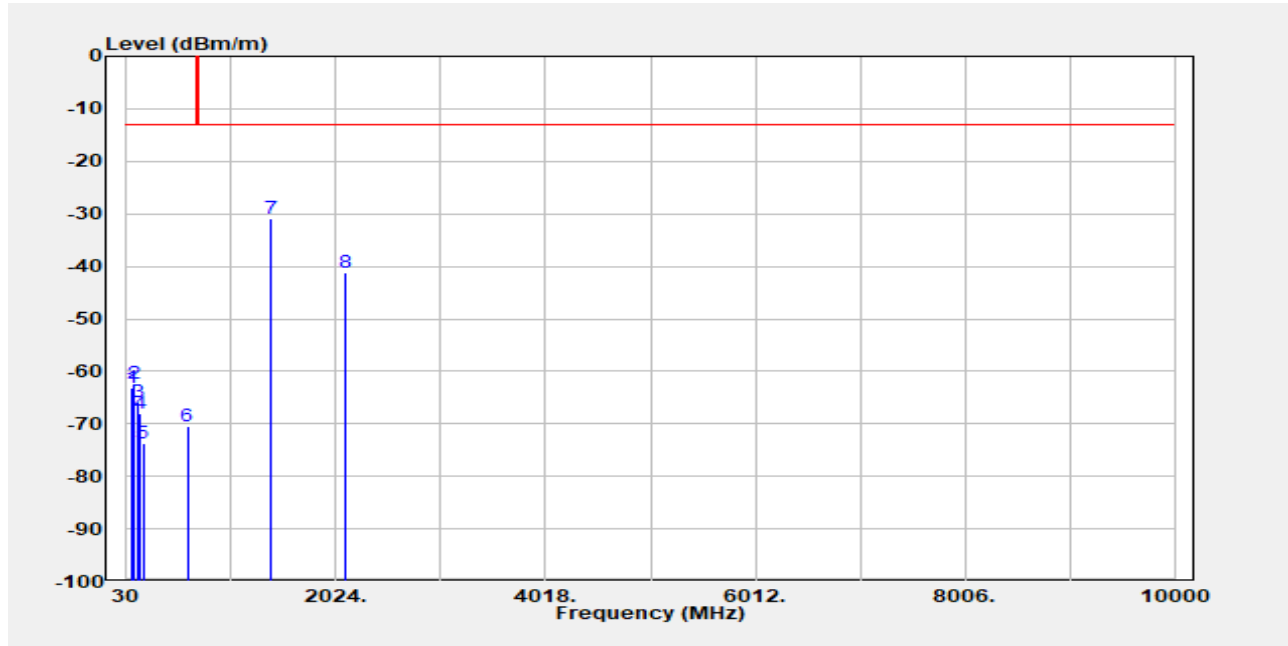
Freq. MHz	EIRP/ERP dBm	SG Output Level dBm	Antenna Gain dBi/dBd	Cable Loss dB	Limit dBm	Margin dB
73.650	-60.61	-56.70	-3.00	-0.91	-13.00	-47.61
102.750	-65.59	-65.87	1.37	-1.08	-13.00	-52.59
137.670	-63.44	-62.71	0.54	-1.27	-13.00	-50.44
154.160	-57.90	-57.08	0.46	-1.27	-13.00	-44.90
184.230	-66.91	-69.63	4.19	-1.46	-13.00	-53.91
603.270	-73.25	-76.77	6.08	-2.55	-13.00	-60.25
3490.000	-56.18	-62.13	12.32	-6.37	-13.00	-43.18
5235.000	-53.60	-58.24	12.68	-8.04	-13.00	-40.60

Unless otherwise stated the results shown in this test report refer only to the sample(s) tested and such sample(s) are retained for 90 days only.

除非另有說明，此報告結果僅對測試之樣品負責，同時此樣品僅保留90天。本報告未經本公司書面許可，不可部份複製。  
This document is issued by the Company subject to its General Conditions of Service printed overleaf, available on request or accessible at <http://www.sgs.com.tw/Terms-and-Conditions> and for electronic format documents, subject to Terms and Conditions for Electronic Documents at <http://www.sgs.com.tw/Terms-and-Conditions>. Attention is drawn to the limitation of liability, indemnification and jurisdiction issues defined therein. Any holder of this document is advised that information contained hereon reflects the Company's findings at the time of its intervention only and within the limits of Client's instructions, if any. The Company's sole responsibility is to its Client and this document does not exonerate parties to a transaction from exercising all their rights and obligations under the transaction documents. This document cannot be reproduced except in full, without prior written approval of the Company. Any unauthorized alteration, forgery or falsification of the content or appearance of this document is unlawful and offenders may be prosecuted to the fullest extent of the law.

Report Number :TERF2304000922ER  
Operation Mode :CAT-M1 B12  
Test Mode :Tx  
EUT Pol :E2 Plane  
Test Frequency :704 MHz

Test Site :SAC 2  
Test Date :2023-05-02  
Temp./Humi. :23.7/67  
Antenna Pol. :Vertical  
Engineer :Ricky Chen



Freq. MHz	EIRP/ERP dBm	SG Output Level dBm	Antenna Gain dBi/dBd	Cable Loss dB	Limit dBm	Margin dB
73.650	-63.11	-59.20	-3.00	-0.91	-13.00	-50.11
100.810	-62.27	-62.54	1.34	-1.07	-13.00	-49.27
137.670	-65.94	-65.21	0.54	-1.27	-13.00	-52.94
154.160	-68.15	-67.33	0.46	-1.27	-13.00	-55.15
185.200	-73.69	-76.63	4.40	-1.47	-13.00	-60.69
607.150	-70.40	-73.89	6.06	-2.57	-13.00	-57.40
1408.000	-30.85	-34.42	7.63	-4.06	-13.00	-17.85
2112.000	-41.09	-45.87	9.78	-5.00	-13.00	-28.09

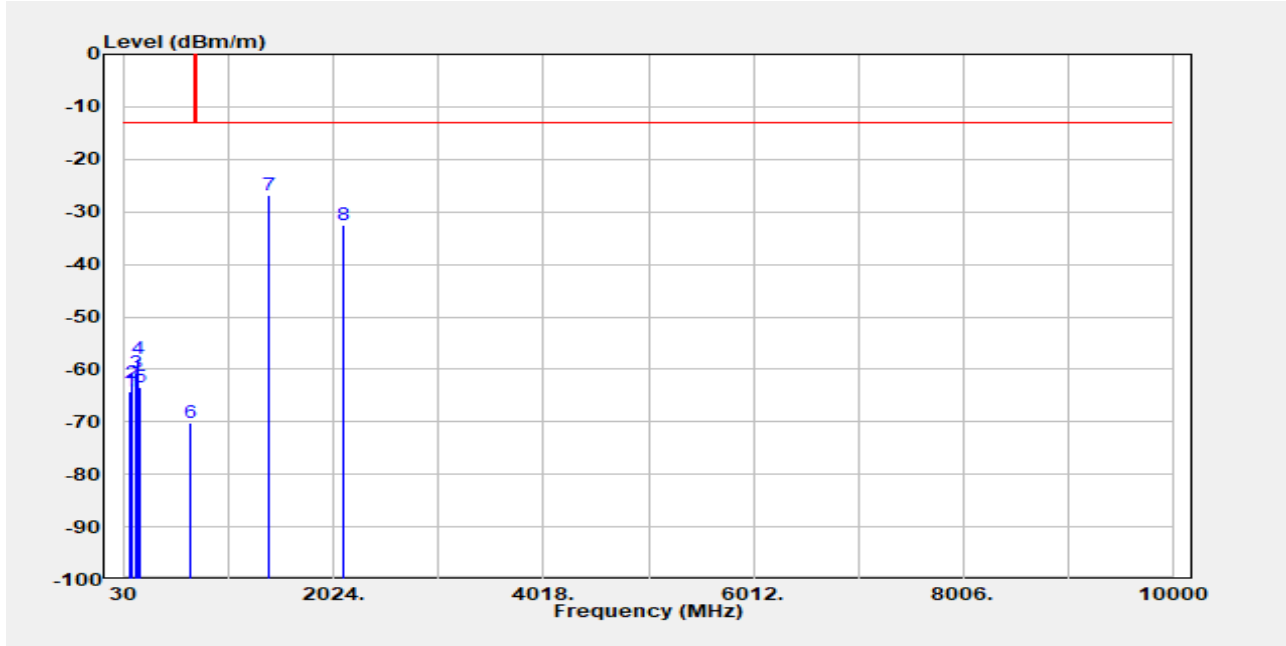
Unless otherwise stated the results shown in this test report refer only to the sample(s) tested and such sample(s) are retained for 90 days only.

除非另有說明，此報告結果僅對測試之樣品負責，同時此樣品僅保留90天。本報告未經本公司書面許可，不可部份複製。

This document is issued by the Company subject to its General Conditions of Service printed overleaf, available on request or accessible at <http://www.sgs.com.tw/Terms-and-Conditions> and for electronic format documents, subject to Terms and Conditions for Electronic Documents at <http://www.sgs.com.tw/Terms-and-Conditions>. Attention is drawn to the limitation of liability, indemnification and jurisdiction issues defined therein. Any holder of this document is advised that information contained hereon reflects the Company's findings at the time of its intervention only and within the limits of Client's instructions, if any. The Company's sole responsibility is to its Client and this document does not exonerate parties to a transaction from exercising all their rights and obligations under the transaction documents. This document cannot be reproduced except in full, without prior written approval of the Company. Any unauthorized alteration, forgery or falsification of the content or appearance of this document is unlawful and offenders may be prosecuted to the fullest extent of the law.

Report Number :TERF2304000922ER  
Operation Mode :CAT-M1 B12  
Test Mode :Tx  
EUT Pol :E2 Plane  
Test Frequency :704 MHz

Test Site :SAC 2  
Test Date :2023-05-02  
Temp./Humi. :23.7/67  
Antenna Pol. :Horizontal  
Engineer :Ricky Chen



Freq. MHz	EIRP/ERP dBm	SG Output Level dBm	Antenna Gain dBi/dBd	Cable Loss dB	Limit dBm	Margin dB
73.650	-64.12	-60.21	-3.00	-0.91	-13.00	-51.12
102.750	-62.59	-62.88	1.37	-1.08	-13.00	-49.59
128.940	-60.61	-60.07	0.74	-1.28	-13.00	-47.61
157.070	-57.96	-57.28	0.55	-1.23	-13.00	-44.96
184.230	-63.40	-66.12	4.19	-1.46	-13.00	-50.40
646.920	-70.10	-73.56	5.99	-2.53	-13.00	-57.10
1408.000	-26.87	-30.45	7.63	-4.06	-13.00	-13.87
2112.000	-32.58	-37.36	9.78	-5.00	-13.00	-19.58

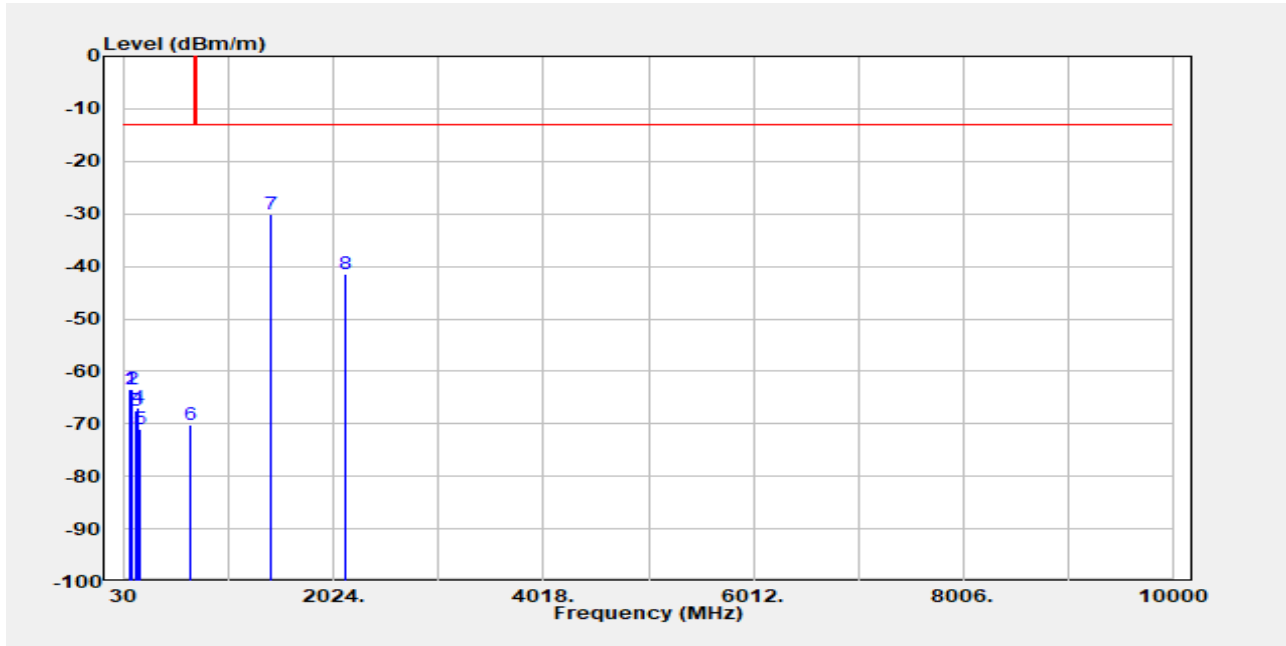
Unless otherwise stated the results shown in this test report refer only to the sample(s) tested and such sample(s) are retained for 90 days only.

除非另有說明，此報告結果僅對測試之樣品負責，同時此樣品僅保留90天。本報告未經本公司書面許可，不可部份複製。

This document is issued by the Company subject to its General Conditions of Service printed overleaf, available on request or accessible at <http://www.sgs.com.tw/Terms-and-Conditions> and for electronic format documents, subject to Terms and Conditions for Electronic Documents at <http://www.sgs.com.tw/Terms-and-Conditions>. Attention is drawn to the limitation of liability, indemnification and jurisdiction issues defined therein. Any holder of this document is advised that information contained hereon reflects the Company's findings at the time of its intervention only and within the limits of Client's instructions, if any. The Company's sole responsibility is to its Client and this document does not exonerate parties to a transaction from exercising all their rights and obligations under the transaction documents. This document cannot be reproduced except in full, without prior written approval of the Company. Any unauthorized alteration, forgery or falsification of the content or appearance of this document is unlawful and offenders may be prosecuted to the fullest extent of the law.

Report Number :TERF2304000922ER  
Operation Mode :CAT-M1 B12  
Test Mode :Tx  
EUT Pol :E2 Plane  
Test Frequency :707.5 MHz

Test Site :SAC 2  
Test Date :2023-05-02  
Temp./Humi. :23.7/67  
Antenna Pol. :Vertical  
Engineer :Ricky Chen



Freq. MHz	EIRP/ERP dBm	SG Output Level dBm	Antenna Gain dBi/dBd	Cable Loss dB	Limit dBm	Margin dB
73.650	-63.52	-59.60	-3.00	-0.91	-13.00	-50.52
100.810	-63.29	-63.56	1.34	-1.07	-13.00	-50.29
137.670	-67.49	-66.76	0.54	-1.27	-13.00	-54.49
160.950	-66.99	-66.75	0.96	-1.20	-13.00	-53.99
184.230	-70.93	-73.65	4.19	-1.46	-13.00	-57.93
649.830	-70.09	-73.64	6.08	-2.53	-13.00	-57.09
1415.000	-30.19	-33.78	7.66	-4.07	-13.00	-17.19
2122.500	-41.35	-46.01	9.67	-5.01	-13.00	-28.35

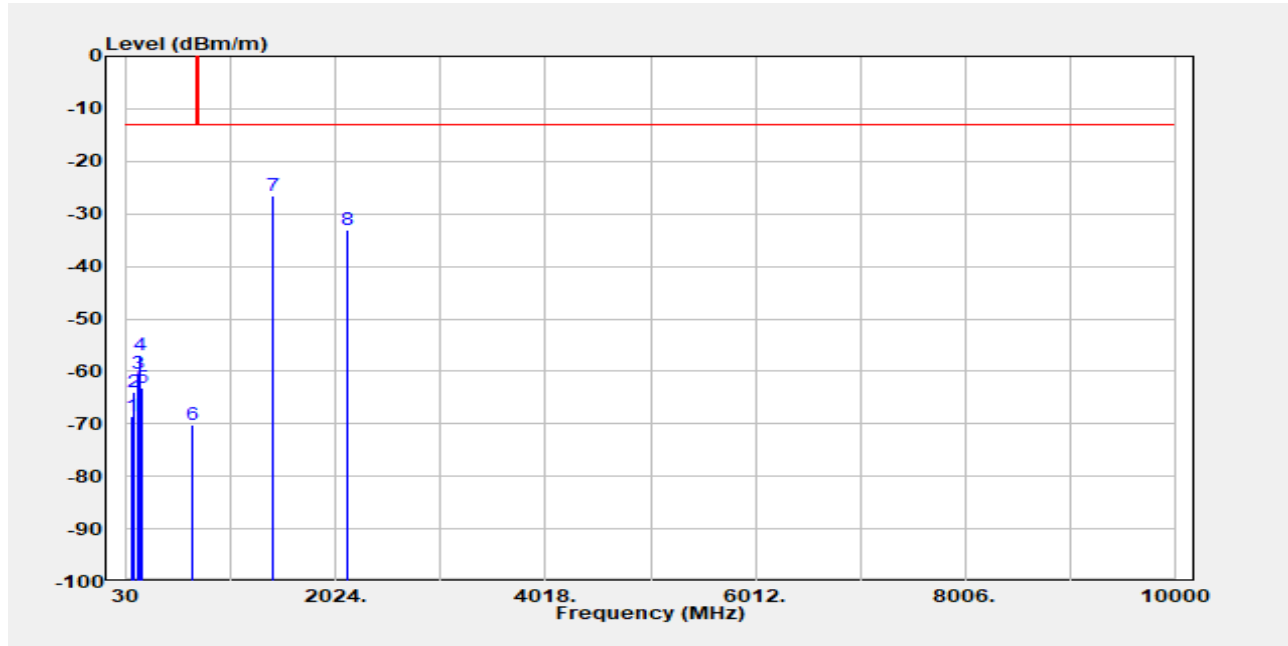
Unless otherwise stated the results shown in this test report refer only to the sample(s) tested and such sample(s) are retained for 90 days only.

除非另有說明，此報告結果僅對測試之樣品負責，同時此樣品僅保留90天。本報告未經本公司書面許可，不可部份複製。

This document is issued by the Company subject to its General Conditions of Service printed overleaf, available on request or accessible at <http://www.sgs.com.tw/Terms-and-Conditions> and for electronic format documents, subject to Terms and Conditions for Electronic Documents at <http://www.sgs.com.tw/Terms-and-Conditions>. Attention is drawn to the limitation of liability, indemnification and jurisdiction issues defined therein. Any holder of this document is advised that information contained hereon reflects the Company's findings at the time of its intervention only and within the limits of Client's instructions, if any. The Company's sole responsibility is to its Client and this document does not exonerate parties to a transaction from exercising all their rights and obligations under the transaction documents. This document cannot be reproduced except in full, without prior written approval of the Company. Any unauthorized alteration, forgery or falsification of the content or appearance of this document is unlawful and offenders may be prosecuted to the fullest extent of the law.

Report Number :TERF2304000922ER  
Operation Mode :CAT-M1 B12  
Test Mode :Tx  
EUT Pol :E2 Plane  
Test Frequency :707.5 MHz

Test Site :SAC 2  
Test Date :2023-05-02  
Temp./Humi. :23.7/67  
Antenna Pol. :Horizontal  
Engineer :Ricky Chen



Freq. MHz	EIRP/ERP dBm	SG Output Level dBm	Antenna Gain dBi/dBd	Cable Loss dB	Limit dBm	Margin dB
73.650	-68.64	-64.73	-3.00	-0.91	-13.00	-55.64
101.780	-63.91	-64.13	1.30	-1.08	-13.00	-50.91
138.640	-60.36	-59.53	0.44	-1.27	-13.00	-47.36
153.190	-56.80	-56.10	0.59	-1.29	-13.00	-43.80
184.230	-63.07	-65.80	4.19	-1.46	-13.00	-50.07
653.710	-70.24	-73.70	5.99	-2.53	-13.00	-57.24
1415.000	-26.56	-30.15	7.66	-4.07	-13.00	-13.56
2122.500	-33.20	-37.86	9.67	-5.01	-13.00	-20.20

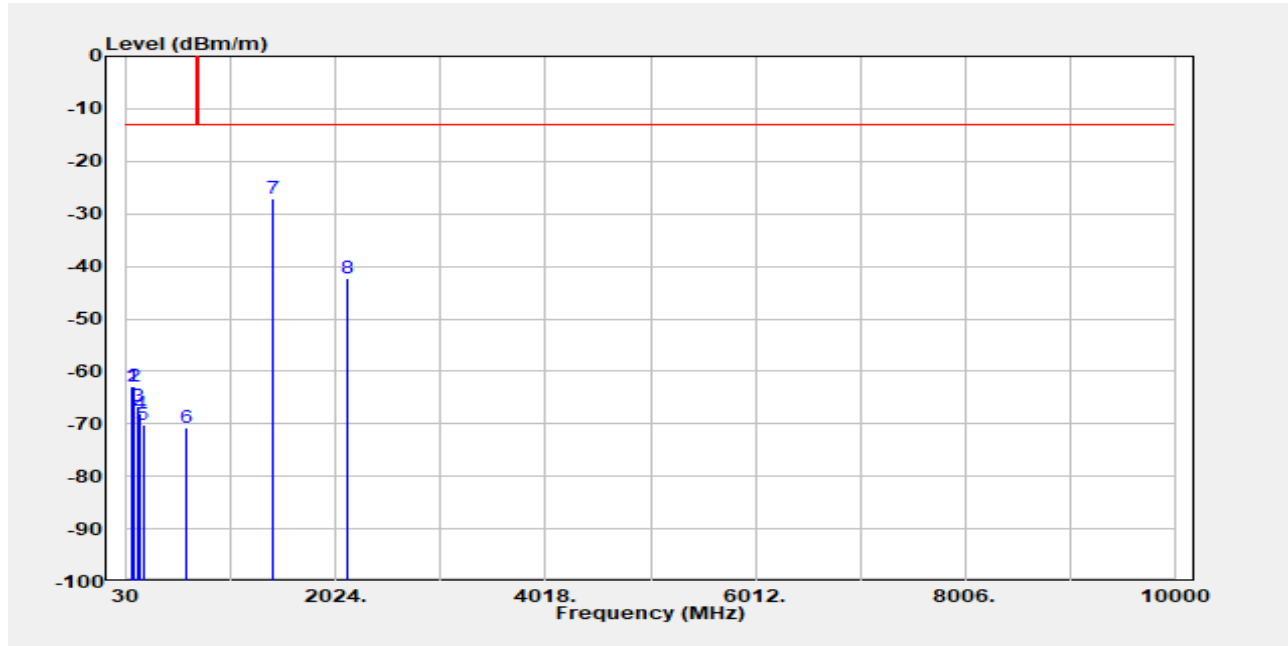
Unless otherwise stated the results shown in this test report refer only to the sample(s) tested and such sample(s) are retained for 90 days only.

除非另有說明，此報告結果僅對測試之樣品負責，同時此樣品僅保留90天。本報告未經本公司書面許可，不可部份複製。

This document is issued by the Company subject to its General Conditions of Service printed overleaf, available on request or accessible at <http://www.sgs.com.tw/Terms-and-Conditions> and for electronic format documents, subject to Terms and Conditions for Electronic Documents at <http://www.sgs.com.tw/Terms-and-Conditions>. Attention is drawn to the limitation of liability, indemnification and jurisdiction issues defined therein. Any holder of this document is advised that information contained hereon reflects the Company's findings at the time of its intervention only and within the limits of Client's instructions, if any. The Company's sole responsibility is to its Client and this document does not exonerate parties to a transaction from exercising all their rights and obligations under the transaction documents. This document cannot be reproduced except in full, without prior written approval of the Company. Any unauthorized alteration, forgery or falsification of the content or appearance of this document is unlawful and offenders may be prosecuted to the fullest extent of the law.

Report Number :TERF2304000922ER  
Operation Mode :CAT-M1 B12  
Test Mode :Tx  
EUT Pol :E2 Plane  
Test Frequency :711 MHz

Test Site :SAC 2  
Test Date :2023-05-02  
Temp./Humi. :23.7/67  
Antenna Pol. :Vertical  
Engineer :Ricky Chen



Freq. MHz	EIRP/ERP dBm	SG Output Level dBm	Antenna Gain dBi/dBd	Cable Loss dB	Limit dBm	Margin dB
73.650	-62.75	-58.84	-3.00	-0.91	-13.00	-49.75
101.780	-62.96	-63.18	1.30	-1.08	-13.00	-49.96
137.670	-66.60	-65.87	0.54	-1.27	-13.00	-53.60
154.160	-68.07	-67.26	0.46	-1.27	-13.00	-55.07
185.200	-70.30	-73.23	4.40	-1.47	-13.00	-57.30
593.570	-70.78	-74.11	6.16	-2.83	-13.00	-57.78
1422.000	-26.97	-30.58	7.69	-4.08	-13.00	-13.97
2133.000	-42.36	-46.91	9.57	-5.02	-13.00	-29.36

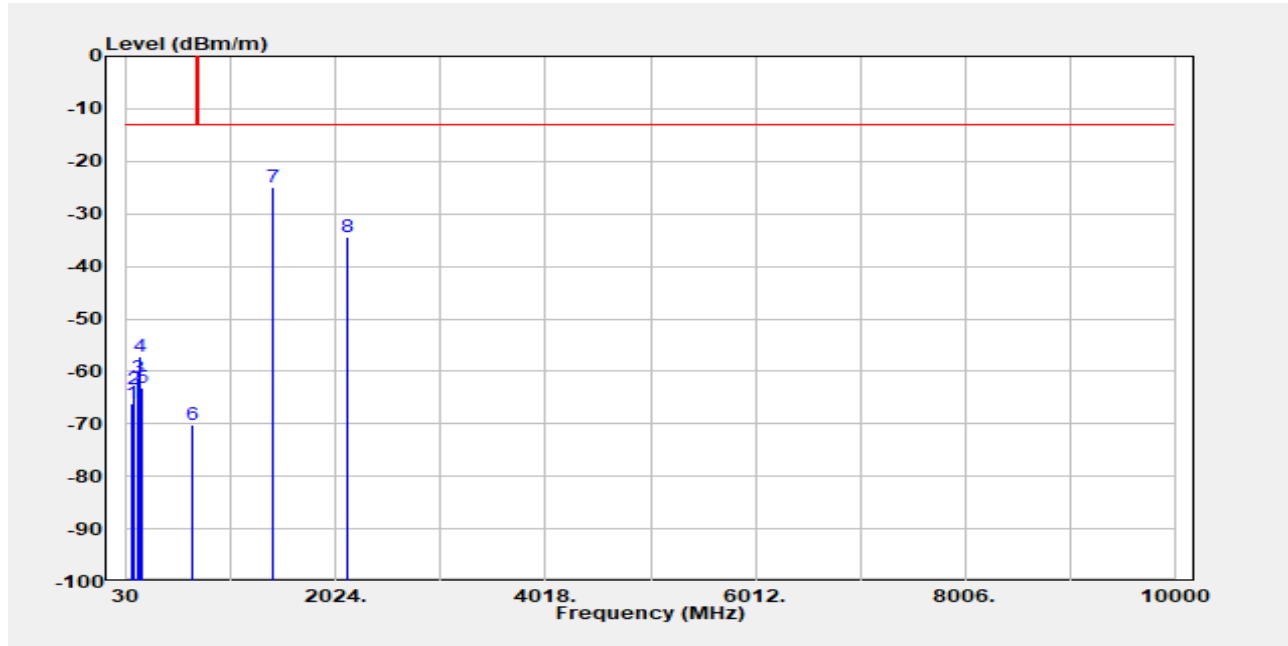
Unless otherwise stated the results shown in this test report refer only to the sample(s) tested and such sample(s) are retained for 90 days only.

除非另有說明，此報告結果僅對測試之樣品負責，同時此樣品僅保留90天。本報告未經本公司書面許可，不可部份複製。

This document is issued by the Company subject to its General Conditions of Service printed overleaf, available on request or accessible at <http://www.sgs.com.tw/Terms-and-Conditions> and for electronic format documents, subject to Terms and Conditions for Electronic Documents at <http://www.sgs.com.tw/Terms-and-Conditions>. Attention is drawn to the limitation of liability, indemnification and jurisdiction issues defined therein. Any holder of this document is advised that information contained hereon reflects the Company's findings at the time of its intervention only and within the limits of Client's instructions, if any. The Company's sole responsibility is to its Client and this document does not exonerate parties to a transaction from exercising all their rights and obligations under the transaction documents. This document cannot be reproduced except in full, without prior written approval of the Company. Any unauthorized alteration, forgery or falsification of the content or appearance of this document is unlawful and offenders may be prosecuted to the fullest extent of the law.

Report Number :TERF2304000922ER  
Operation Mode :CAT-M1 B12  
Test Mode :Tx  
EUT Pol :E2 Plane  
Test Frequency :711 MHz

Test Site :SAC 2  
Test Date :2023-05-02  
Temp./Humi. :23.7/67  
Antenna Pol. :Horizontal  
Engineer :Ricky Chen



Freq. MHz	EIRP/ERP dBm	SG Output Level dBm	Antenna Gain dBi/dBd	Cable Loss dB	Limit dBm	Margin dB
73.650	-66.04	-62.13	-3.00	-0.91	-13.00	-53.04
102.750	-63.46	-63.74	1.37	-1.08	-13.00	-50.46
134.760	-61.36	-60.63	0.55	-1.28	-13.00	-48.36
153.190	-57.08	-56.39	0.59	-1.29	-13.00	-44.08
184.230	-63.14	-65.87	4.19	-1.46	-13.00	-50.14
647.890	-70.29	-73.78	6.02	-2.53	-13.00	-57.29
1422.000	-24.93	-28.54	7.69	-4.08	-13.00	-11.93
2133.000	-34.52	-39.07	9.57	-5.02	-13.00	-21.52

Unless otherwise stated the results shown in this test report refer only to the sample(s) tested and such sample(s) are retained for 90 days only.

除非另有說明，此報告結果僅對測試之樣品負責，同時此樣品僅保留90天。本報告未經本公司書面許可，不可部份複製。

This document is issued by the Company subject to its General Conditions of Service printed overleaf, available on request or accessible at <http://www.sgs.com.tw/Terms-and-Conditions> and for electronic format documents, subject to Terms and Conditions for Electronic Documents at <http://www.sgs.com.tw/Terms-and-Conditions>. Attention is drawn to the limitation of liability, indemnification and jurisdiction issues defined therein. Any holder of this document is advised that information contained hereon reflects the Company's findings at the time of its intervention only and within the limits of Client's instructions, if any. The Company's sole responsibility is to its Client and this document does not exonerate parties to a transaction from exercising all their rights and obligations under the transaction documents. This document cannot be reproduced except in full, without prior written approval of the Company. Any unauthorized alteration, forgery or falsification of the content or appearance of this document is unlawful and offenders may be prosecuted to the fullest extent of the law.

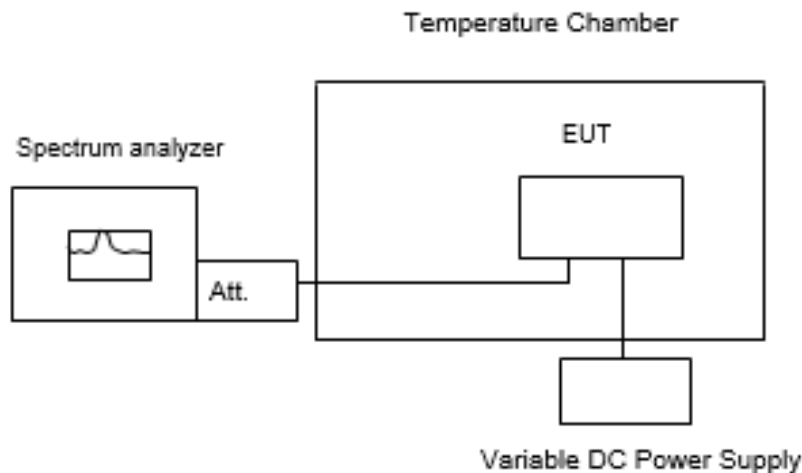


## 11 FREQUENCY STABILITY MEASUREMENT

### 11.1 Standard Applicable

The frequency stability shall be sufficient to ensure that the fundamental emission stays within the authorized frequency block.

### 11.2 Test Set-up



**Note:** Measurement setup for testing on Antenna connector

### 11.3 Measurement Procedure

The equipment under test was connected to an external AC or DC power supply and input rated voltage. RF output was connected to a frequency counter or spectrum analyzer via feed through attenuators. The EUT was placed inside the temperature chamber. Set the spectrum analyzer RBW low enough to obtain the desired frequency resolution and measure EUT 25°C operating frequency as reference frequency. Turn EUT off and set the chamber temperature to -30°C. After the temperature stabilized for approximately 30 minutes recorded the frequency. Repeat step measure with 10°C increased per stage until the highest temperature of +50°C reached.

Set chamber temperature to 25°C. Use a variable AC power supply / DC power source to power the EUT and set the voltage to rated voltage. Set the spectrum analyzer RBW low enough to obtain the desired frequency resolution and recorded the frequency.

Reduce the input voltage to specify extreme voltage variation (+/- 15%) and endpoint as declared by the manufacturer, record the maximum frequency change.

### 11.4 Measurement Result

*Note: The battery is rated 6V dc.*

Unless otherwise stated the results shown in this test report refer only to the sample(s) tested and such sample(s) are retained for 90 days only.  
除非另有說明，此報告結果僅對測試之樣品負責，同時此樣品僅保留90天。本報告未經本公司書面許可，不可部份複製。

This document is issued by the Company subject to its General Conditions of Service printed overleaf, available on request or accessible at <http://www.sgs.com.tw/Terms-and-Conditions> and for electronic format documents, subject to Terms and Conditions for Electronic Documents at <http://www.sgs.com.tw/Terms-and-Conditions>. Attention is drawn to the limitation of liability, indemnification and jurisdiction issues defined therein. Any holder of this document is advised that information contained hereon reflects the Company's findings at the time of its intervention only and within the limits of Client's instructions, if any. The Company's sole responsibility is to its Client and this document does not exonerate parties to a transaction from exercising all their rights and obligations under the transaction documents. This document cannot be reproduced except in full, without prior written approval of the Company. Any unauthorized alteration, forgery or falsification of the content or appearance of this document is unlawful and offenders may be prosecuted to the fullest extent of the law.

Reference Freq.:		Cat-M1 B2 Mid Channel		1880.0000	MHz 10M QPSK CH 18900
Power Supply Vdc	Temp. (°C)	Freq. (MHz)	(ppm)	Limit	
<b>Freq. ERROR vs. VOLTAGE</b>					
6.9	25	1879.999992	-0.0043	+/- 2.5 ppm	
6	25	1879.999992	-0.0041		
5.1	25	1880.000003	0.0016		
3.3 (End Point)	25	1880.000009	0.0049		
<b>Freq. ERROR vs. Temp.</b>					
6	-30	1879.999993	-0.0039	+/- 2.5 ppm	
6	-20	1880.000005	0.0028		
6	-10	1880.000013	0.0067		
6	0	1879.999995	-0.0026		
6	10	1880.000002	0.0013		
6	20	1880.000010	0.0052		
6	30	1880.000008	0.0043		
6	40	1880.000007	0.0039		
6	50	1879.999986	-0.0073		
Reference Freq.:		Cat-M1 B4 Mid Channel		1732.5000	MHz 10M QPSK CH 20175
Power Supply Vdc	Temp. (°C)	Freq. (MHz)	(ppm)	Limit	
<b>Freq. ERROR vs. VOLTAGE</b>					
6.9	25	1732.499994	-0.0037	+/- 2.5 ppm	
6	25	1732.499991	-0.0054		
5.1	25	1732.500008	0.0046		
3.3 (End Point)	25	1732.500004	0.0023		
<b>Freq. ERROR vs. Temp.</b>					
6	-30	1732.499999	-0.0005	+/- 2.5 ppm	
6	-20	1732.499995	-0.0027		
6	-10	1732.499997	-0.0017		
6	0	1732.499988	-0.0069		
6	10	1732.499997	-0.0016		
6	20	1732.500012	0.0067		
6	30	1732.500001	0.0005		
6	40	1732.499998	-0.0014		
6	50	1732.499996	-0.0026		

Unless otherwise stated the results shown in this test report refer only to the sample(s) tested and such sample(s) are retained for 90 days only.

除非另有說明，此報告結果僅對測試之樣品負責，同時此樣品僅保留90天。本報告未經本公司書面許可，不可部份複製。

This document is issued by the Company subject to its General Conditions of Service printed overleaf, available on request or accessible at <http://www.sgs.com.tw/Terms-and-Conditions> and for electronic format documents, subject to Terms and Conditions for Electronic Documents at <http://www.sgs.com.tw/Terms-and-Conditions>. Attention is drawn to the limitation of liability, indemnification and jurisdiction issues defined therein. Any holder of this document is advised that information contained hereon reflects the Company's findings at the time of its intervention only and within the limits of Client's instructions, if any. The Company's sole responsibility is to its Client and this document does not exonerate parties to a transaction from exercising all their rights and obligations under the transaction documents. This document cannot be reproduced except in full, without prior written approval of the Company. Any unauthorized alteration, forgery or falsification of the content or appearance of this document is unlawful and offenders may be prosecuted to the fullest extent of the law.

Reference Freq.:		Cat-M1 B12 Mid Channel		707.5000	MHz 10M QPSK CH 23095
Power Supply Vdc	Temp. (°C)	Freq. (MHz)	(ppm)	Limit	
<b>Freq. ERROR vs. VOLTAGE</b>					
6.9	25	707.500002	0.0024	+/- 2.5 ppm	
6	25	707.499994	-0.0088		
5.1	25	707.500000	-0.0001		
3.3 (End Point)	25	707.500005	0.0076		
<b>Freq. ERROR vs. Temp.</b>					
6	-30	707.499991	-0.0129	+/- 2.5 ppm	
6	-20	707.500012	0.0164		
6	-10	707.500007	0.0096		
6	0	707.500009	0.0129		
6	10	707.499993	-0.0098		
6	20	707.500004	0.0049		
6	30	707.499997	-0.0044		
6	40	707.500003	0.0041		
6	50	707.500012	0.0164		

Unless otherwise stated the results shown in this test report refer only to the sample(s) tested and such sample(s) are retained for 90 days only.  
除非另有說明，此報告結果僅對測試之樣品負責，同時此樣品僅保留90天。本報告未經本公司書面許可，不可部份複製。

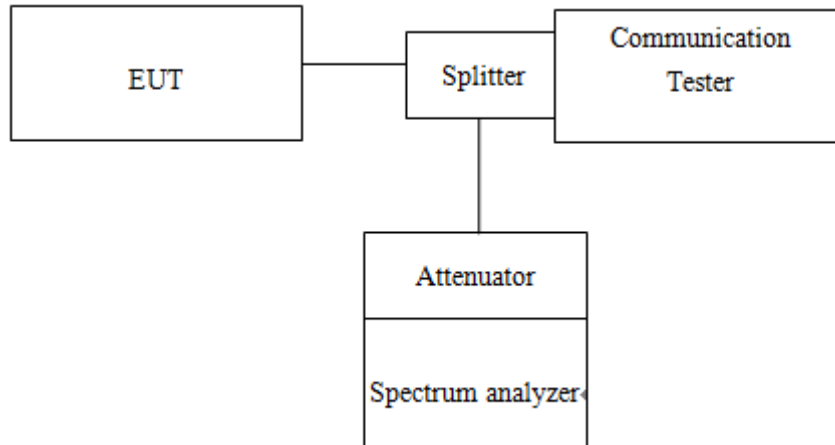
This document is issued by the Company subject to its General Conditions of Service printed overleaf, available on request or accessible at <http://www.sgs.com.tw/Terms-and-Conditions> and for electronic format documents, subject to Terms and Conditions for Electronic Documents at <http://www.sgs.com.tw/Terms-and-Conditions>. Attention is drawn to the limitation of liability, indemnification and jurisdiction issues defined therein. Any holder of this document is advised that information contained hereon reflects the Company's findings at the time of its intervention only and within the limits of Client's instructions, if any. The Company's sole responsibility is to its Client and this document does not exonerate parties to a transaction from exercising all their rights and obligations under the transaction documents. This document cannot be reproduced except in full, without prior written approval of the Company. Any unauthorized alteration, forgery or falsification of the content or appearance of this document is unlawful and offenders may be prosecuted to the fullest extent of the law.

## 12 PEAK TO AVERAGE RATIO

### 12.1 Standard Applicable

The peak-to-average ratio (PAR) of the transmission may not exceed 13dB.

### 12.2 Test SET-UP



### 12.3 Measurement Procedure

1. KDB 971168 D01 is employed as the following procedure is proper adjusted accordingly:
2. Set resolution/measurement bandwidth  $\geq$  signal's occupied bandwidth; & internal =1ms
3. Set the number of counts to a value that stabilizes the measured CCDF curve.

Unless otherwise stated the results shown in this test report refer only to the sample(s) tested and such sample(s) are retained for 90 days only.  
除非另有說明，此報告結果僅對測試之樣品負責，同時此樣品僅保留90天。本報告未經本公司書面許可，不可部份複製。

This document is issued by the Company subject to its General Conditions of Service printed overleaf, available on request or accessible at <http://www.sgs.com.tw/Terms-and-Conditions> and for electronic format documents, subject to Terms and Conditions for Electronic Documents at <http://www.sgs.com.tw/Terms-and-Conditions>. Attention is drawn to the limitation of liability, indemnification and jurisdiction issues defined therein. Any holder of this document is advised that information contained hereon reflects the Company's findings at the time of its intervention only and within the limits of Client's instructions, if any. The Company's sole responsibility is to its Client and this document does not exonerate parties to a transaction from exercising all their rights and obligations under the transaction documents. This document cannot be reproduced except in full, without prior written approval of the Company. Any unauthorized alteration, forgery or falsification of the content or appearance of this document is unlawful and offenders may be prosecuted to the fullest extent of the law.

## 12.4 Measurement Result

Cat-M1 BAND 2							
Channel bandwidth: 1.4MHz				Channel bandwidth: 3MHz			
Freq. (MHz)	CH	PAPR (dB)		Freq. (MHz)	CH	PAPR (dB)	
		16QAM	Limit			16QAM	Limit
1850.7	18607	8.36	13	1851.5	18615	10.02	13
1880.0	18900	11.01	13	1880.0	18900	8.83	13
1909.3	19193	7.96	13	1908.5	19185	8.44	13

Cat-M1 BAND 2							
Channel bandwidth: 5MHz				Channel bandwidth: 10MHz			
Freq. (MHz)	CH	PAPR (dB)		Freq. (MHz)	CH	PAPR (dB)	
		16QAM	Limit			16QAM	Limit
1852.5	18625	8.45	13	1855.0	18650	5.78	13
1880.0	18900	8.79	13	1880.0	18900	8.84	13
1907.5	19175	10.15	13	1905.0	19150	4.34	13

Cat-M1 BAND 2							
Channel bandwidth: 15MHz				Channel bandwidth: 20MHz			
Freq. (MHz)	CH	PAPR (dB)		Freq. (MHz)	CH	PAPR (dB)	
		16QAM	Limit			16QAM	Limit
1857.5	18675	4.84	13	1860.0	18700	4.57	13
1880.0	18900	4.44	13	1880.0	18900	4.85	13
1902.5	19125	4.23	13	1900.0	19100	4.25	13

Unless otherwise stated the results shown in this test report refer only to the sample(s) tested and such sample(s) are retained for 90 days only.

除非另有說明，此報告結果僅對測試之樣品負責，同時此樣品僅保留90天。本報告未經本公司書面許可，不可部份複製。

This document is issued by the Company subject to its General Conditions of Service printed overleaf, available on request or accessible at <http://www.sgs.com.tw/Terms-and-Conditions> and for electronic format documents, subject to Terms and Conditions for Electronic Documents at <http://www.sgs.com.tw/Terms-and-Conditions>. Attention is drawn to the limitation of liability, indemnification and jurisdiction issues defined therein. Any holder of this document is advised that information contained hereon reflects the Company's findings at the time of its intervention only and within the limits of Client's instructions, if any. The Company's sole responsibility is to its Client and this document does not exonerate parties to a transaction from exercising all their rights and obligations under the transaction documents. This document cannot be reproduced except in full, without prior written approval of the Company. Any unauthorized alteration, forgery or falsification of the content or appearance of this document is unlawful and offenders may be prosecuted to the fullest extent of the law.