

Langogo Genesis

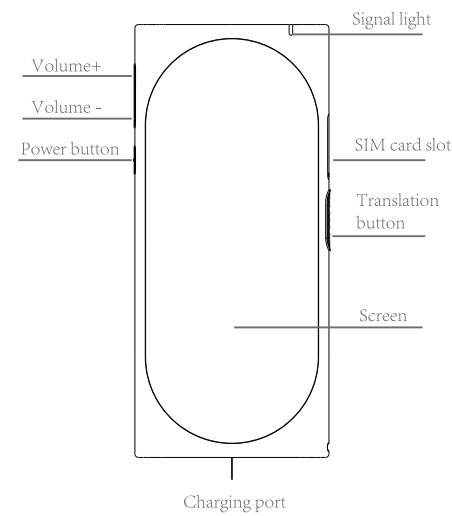


Instruction manual

Accessories

Name	Unit
Translator	1
Data line	1
Ejection pin	1
Instruction	1
Lanyard	1

Buttons



Specifications

Production	Langogo Genesis
Dimensions	121.3mm*54.4mm*13.2mm
Color	Black / White / Pink / Blue
Weight	115g
Screen size	3.1 inches
Screen material	Capacitive screen
CPU	MTK6739
ROM	8GB
GSM	2G/3G/4G GSM1900/DCS1800/PCS1900/ GSM850 WCDMA: B1/B2/B5/B8 TD-SCDMA: B34/B39 TDD-LTE: B38/B39/B40/B41M(2555-2655) FDD-LTE: B1/B2/B3/B5/B7/B8/B17/B20
Battery	2200mAh
Temperature	-10°C~40°C
Humidity	≤ 70%

User Guideline

Prepare before use

Langogo Genesis supports three methods of connecting to a network: 1. Cellular data connection (SIM card), 2. Wireless Wi-Fi connection, 3. eSIM network service (Automatically login to the local mobile network, without a SIM card); Please select the appropriate network service based on your current network environment, if both, the system uses the Wi-Fi connection preferentially to save user data traffic.

Important reminder: Because the wireless network is susceptible to interference, it is recommended that using eSIM service is a more stable experience.

1. Cellular data connection

Need to install a SIM card. For information on obtaining and using the SIM card, please consult the SIM card provider, network service provider, or network operator.

2. Wireless Wi-Fi connection
Via upper right corner of the screen “Wi-Fi”-“Wi-Fi” configure the wireless network, then select the wireless network to connect to, and enter the correct password to connect.

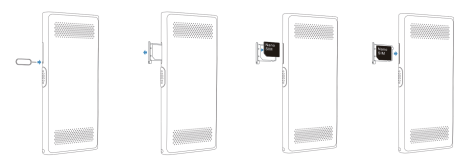
3. eSIM network service

Via upper right corner of the screen “Data traffic”-“Purchase” to purchase data traffic, after that the device prompts to complete the purchase, please click "Activate" to use.

Installing the SIM card

SIM card slot only supports Mini-SIM (medium card). Inserting a non-standard card may cause damage to the SIM card socket or does not recognize the card.

Please prevent poke finger or damage device when using the ejection pin. Please put the needle where the child can not touch to prevent inadvertently swallowing or stabbing themselves.



Charging

When the power is lower, the status bar at the top of the screen shows a low battery icon and some functions of the device may not be available. When the battery power falls below the threshold, the device shuts down automatically.

Turn on & Turn off

Turn on: Long press the power button until the screen shows Boot animation. Device initialization need some time, thanks for your patience.

Turn off: Long press the power button, and then click "Shutdown" on the screen to shut down the device.

Lock & Unlock

Short press the power button to unlock/lock the device.

Explanation: If there is no any operation within the default or set standby time, the device locks automatically.

Screen

Screen is the main function entrance of the device which can be operated by touching.

Status Bar

The icon at the top of the device screen is some status information about the device, such as the Location, Wi-Fi signal, Battery display, etc.

FCC ID Operational Guideline

First step : Click the menu

Second step : Click 'Settings'

Third step : Click 'View the FCC ID'

Important Instructions

1. Do not use the device outdoor under thunderstorm.
2. Keep away from children when using the device and place it at where children cannot access.
3. Please observe all safety warnings and regulations regarding the use of the device during driving.
4. Please use the batteries, chargers, accessories, and supplies that match the device.
5. Do not let your device suffer from collision and damage.
6. Keep the device dry and do not touch it with wet hands and keep the device away from any liquids.
7. Please turn off the device, when identifies the wireless devices need prohibited situation, such as car refueling and airport take off.
8. Charging must be carried out in a well-ventilated and heat-dissipating environment, away from flammable and explosive materials.

Name and content of harmful substances in the product

Part name	Harmful substance					
	Pb (Pb)	Mercury (Hg)	Cadmium (Cd)	Hexavalent chromium (Cr ⁶⁺)	Polybrominated biphenyl (PBB)	Polybrominated diphenyl ether (PBDE)
Translator	X	○	○	○	○	○
Data line	X	○	○	○	○	○

This is prepared in accordance with SJ/T 11364.

O: Indicates that the content of the harmful substance in all homogeneous materials of the part is below the limit specified in GB/T 26572.

X: Indicates that the content of harmful substance in at least one homogeneous material of the part exceeds the limit specified in GB/T 26572.

Tips

1. When upgrading the system, please go through the official network or the device system upgrade function.
2. When the device is at the airport, expressway, port, etc. it may encounter weak network signal or no signal coverage, please change area and restart the device to connect to the internet.
3. Please do not watch videos online, download video or software and perform large data operations such as cloud backup, because different countries have different policies. The short-term used huge data may lead to network slowdown or pause etc.

Disclaimer

If you do not use the device according to the user instruction, we will assume no responsibility.

After-sales Service

Repair Service: service@langogo.ai

FCC Statement

Changes or modifications not expressly approved by the party responsible for compliance could void the user's authority to operate the equipment.

This equipment has been tested and found to comply with the limits for a Class B digital device, pursuant to Part 15 of the FCC Rules. These limits are designed to provide reasonable protection against harmful interference in a residential installation. This equipment generates uses and can radiate radio frequency energy and, if not installed and used in accordance with the instructions, may cause harmful interference to radio communications. However, there is no guarantee that interference will not occur in a particular installation. If this equipment does cause harmful interference to radio or television reception, which can be determined by turning the equipment off and on, the user is encouraged to try to correct the interference by one or more of the following measures:

- Reorient or relocate the receiving antenna.
- Increase the separation between the equipment and receiver.
- Connect the equipment into an outlet on a circuit different from that to which the receiver is connected.
- Consult the dealer or an experienced radio/TV technician for help

This device complies with part 15 of the FCC rules. Operation is subject to the following two conditions (1) this device may not cause harmful interference, and (2) this device must accept any interference received, including interference that may cause undesired operation.