

Bluetooth Earphones

M1 User Guide



Contents

English 1-13

Español 14-23

Customer Support

US: us_supportcare@163.com

UK: uk_support@126.com

EU: Eu_supportcare@163.com

We will reply to you within 24 hours and 100% solve your issues

Packaging List



Open-Ear headphones x1



Charging Case x1



USB type-C cable x1



Manual x1

Product Introduction

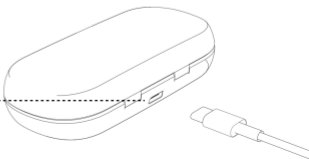
Charging LED indicator



Touch control area

LED light

Type-C port



Power On & Pairing

Pair 1-With Charging Case

1. Take out the earbuds from charging case,



2. Select "M1" from Bluetooth list.



Pair 2-Without Charging Case

Touch 4 sec



1. Lone press both earbuds for 4 seconds until the indicator lights flash red and blue.

2. Select "M1" from Bluetooth list.

Music

Pause / Play

Tap Twice



Change Song

Long Press 2 seconds

Left bud: Previous track

Right bud: Next track



Adjust Volume

Tap Once

Left bud: Volume down

Right bud: Volume up

(Note: When the max & min volume is reach, there will be "DIDI" prompt)



Voice Assistant

Tap the earphone 3 times

(Note: Standby or non-music state)



Incoming call

Answer/End a call

Tap twice either bud

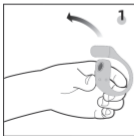


Decline a call

Long press either bud for 2 seconds



How to wear it?



1. Pick up



2. Rotate along
ear curve



3. Check fit



4. You are all set

Power Off

With Charging Case

Put the earbuds into the charging case

Without Charging Case

On Pairing, long press either earbuds for 6 seconds Or
turn off Bluetooth

Note :

When the earbuds is disconnected 5 minutes long
or when the battery voltage of the earbuds are lower than 3.1V,
the buds will automatically power off.

Charging

Earbuds:

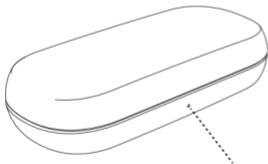
Earbuds LED Light On: Charging

Earbuds LED Light Off: Fully Charged (about 1.5 hours)

Charging case:

Charging Case LED Light Blinking: Charging

Charging Case Green LED Light On: Fully charged (about 1.5 hours)



Red LED Light on 3 seconds	1%-20% Battery left
Orange LED Light on 3 seconds	21%-70% Battery left
Green LED Light on 3 seconds	71%-100% Battery left

Reset the Earbuds

When both earbuds fail to pair with each other or occur connection related issues, please follow below steps:

1. Delete the ' M1' Bluetooth name from your phone and turn off Bluetooth
2. Put the earbuds back to the charging case and white LED Light on
3. Long press both earbuds for 8 seconds until the LED lights flash red and blue 3 time
4. Open charging case cap
5. Turn on Bluetooth and click ' M1' from your phone

Q&A

Q: Why the music cuts in and out sometimes?

A: Please make sure there is no obstacle between the earphones and your device. Please make sure there is no Microwave oven /Wifi transmitter around you, which are more likely to produce electromagnetic interference and result in signal interruption.

Q: Are M1 water and sweat resistant?

A: M1 earbuds is water-resistant. The earbuds are designed to be resistant against dust and drops of water but aren't meant to be submerged under water. We don't recommend you wear them in heavy rain or wash them with running water.

Q: How to contact Customer Service Team?

A: If you have any issue with the product, please contact us via

US: us_supportcare@163.com

UK: uk_support@126.com

EU: Eu_supportcare@163.com

We will reply to you within 24 hours and 100% solve your issue.

FCC Statement

This equipment has been tested and found to comply with the limits for a Class B digital device, pursuant to part 15 of the FCC Rules.

These limits are designed to provide reasonable protection against harmful interference in a residential installation.

This equipment generates, uses and can radiate radio frequency energy and, if not installed and used in accordance with the instructions, may cause harmful interference to radio communications.

However, there is no guarantee that interference will not occur in a particular installation. If this equipment does cause harmful interference to radio or television reception, which can be determined by turning the equipment off and on, the user is encouraged to try to correct the interference by one or more of the following measures:

- Reorient or relocate the receiving antenna.
- Increase the separation between the equipment and receiver.
- Connect the equipment into an outlet on a circuit different from that to which the receiver is connected.
- Consult the dealer or an experienced radio/TV technician for help.

This device and its antenna(s) must not be co-located or operation in conjunction with any other antenna or transmitter.

Radiation Exposure Statement

The device has been evaluated to meet general RF exposure requirement in portable exposure condition without restriction.

FCC Statement

This device complies with part 15 of the FCC Rules.

Operation is subject to the following two conditions:

(1) This device may not cause harmful interference

(2) this device must accept any interference received,

including interference that may cause undesired operation

Changes or modifications not expressly approved by the party responsible for compliance could void the user's authority to operate the equipment.

Disposal and Recycling Information

This symbol (with or without a solid bar) on the device, batteries (included), and / or the packaging, indicates that the device and its electrical accessories (for example, a headset, adapter or cable) and batteries should not be disposed of as household garbage.



Warning:



-
1. Don't place the product into a liquid environment or avoid the product exposed to high humidity
 2. Avoid extrusion to avert the damage to the product
 3. Don't attempt to dismantle the product. Put the product in a cool and dry place to keep it dry if stored for a long time
 4. Avoid touching the strong magnet to prevent the magnetic headset from being demagnetized.
 5. Avoid the dusty, wet and dirty environment where the electronic circuit of the equipment may be damaged if being used.
 6. Don't Use the equipment at the moment of thunderstorm because thunderstorm may incur equipment fault or shock hazard.
 7. Don't use the equipment when riding a motorcycle or a bicycle, driving a car or crossing the road to ensure your safety.
 8. Keep the equipment out of reach of children or pets to avert the damage.
 9. Don't wash the equipment with chemical cleanser or strong detergent

Don't Listen to the voice under high sound pressure and high volume for a long time to prevent the possible hearing impairment when the headset is used.

Battery warning

The built-in lithium battery of the product is forbidden to be disassembled, impacted, extruded or put into fire. The battery under the very low air pressure may result in explosion or flammable liquid or gas leakage. Avoid the battery in a high-temperature environment or being exposed to strong sunlight to avert explosion. Don't use the battery continuously in case of serious ballooning. The battery shall be handled pursuant to the local regulations and shall not be disposed as household garbage. Don't try to repair, remove or refit the battery. The explosion may happen if the battery is replaced by the one subject to incorrect model. Don't compress or puncture the battery with hard object. The battery leakage, overheating or outbreak of a fire may occur if the battery is destroyed.



Guía del usuario de M1



Atención al cliente

US: us_supportcare@163.com

UK: uk_support@126.com

EU: Eu_supportcare@163.com

We will reply to you within 24 hours and 100% solve your issues

Lista de embalaje



Auriculares abiertos x1



Estuche de carga x1



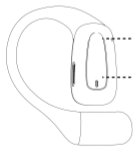
Cable USB tipo-C x1



Manual x1

Introducción del producto

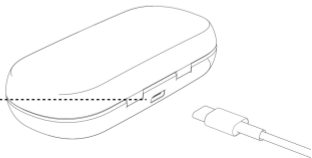
Indicador LED de carga



Zona de control táctil

Luz LED

Puerto tipo C



Encendido y emparejamiento

Emparejamiento 1-Con estuche de carga

1.Saque los auriculares del estuche de carga;



2.Seleccione "M1" de la lista de Bluetooth.



Emparejamiento 2-Sin estuche de carga

Toque 4 segundos



1.Presione solo ambos auriculares durante 6 segundos hasta que las luces indicadoras parpadeen en rojo y azul.

2.Seleccione "M1" de la lista de Bluetooth.

Música

Pausa/Reproducir

Toque dos veces



Cambiar canción

Pulsación larga 2 segundos

Botón izquierdo: pista anterior

Botón derecho: pista siguiente



Ajusta el volumen

Toque una vez

Botón izquierdo: bajar volumen

Botón derecho: subir volumen

(Nota: cuando se alcance el volumen máximo y mínimo, aparecerá el mensaje "DIDI")



Asistente de voz

Toque el auricular 3 veces

(Nota: estado de espera o sin música)



Llamada

Responder/Colgar una llamada

Toca dos veces cualquiera de los botones

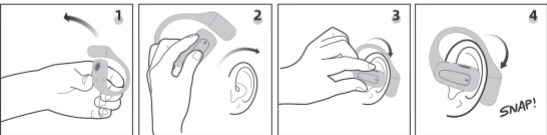


Rechazar una llamada

Mantenga presionado cualquiera de los botones durante 2 segundos



¿Cómo usarlo?



1. Recoger

2. Girar a lo largo de la curva de la oreja.

3. Comprobar el ajuste

4. Ya está todo listo

Apagado

Con estuche de carga

Coloque los auriculares en el estuche de carga

Sin estuche de carga

Al emparejar, mantenga presionado cualquiera de los auriculares durante 4 segundos o apague Bluetooth

Nota:

Cuando los auriculares están desconectados durante 5 minutos
O cuando el voltaje de la batería de los auriculares sea inferior a 3,1V, los auriculares se apagarán automáticamente.

Cargando

Auriculares:

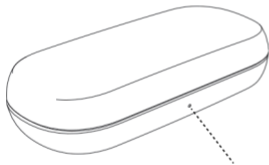
Luz LED de los auriculares encendida: cargando

Luz LED de los auriculares apagada: completamente cargados
(aproximadamente 1,5 horas)

Estuche de carga:

Luz LED del estuche de carga parpadeando: cargando

Estuche de carga Luz LED verde encendida: Completamente cargada
(aproximadamente 1,5 horas)



Luz LED roja encendida 3 segundos	Queda entre 1% y 20% de batería
Luz LED naranja encendida 3 segundos	21%-70% de batería restante
Luz LED verde encendida 3 segundos	71%-100% de batería restante

Restablecer los auriculares

Cuando ambos auriculares no se emparejan entre sí o se producen problemas relacionados con la conexión, siga los pasos a continuación:

1. Elimine el nombre de Bluetooth "M1" de su teléfono y apague Bluetooth
2. Vuelva a colocar los auriculares en el estuche de carga y encienda la luz LED blanca
3. Mantenga presionados ambos auriculares durante 8 segundos hasta que las luces LED parpadeen en rojo y azul 3 veces
4. Abra la tapa del estuche de carga
5. Encienda Bluetooth y haga clic en "M1" desde su teléfono.

Preguntas y respuestas

P: ¿Por qué la música entra y sale a veces?

R: Asegúrese de que no haya obstáculos entre los auriculares y su dispositivo. Asegúrese de que no haya microondas.

Transmisor de horno/Wifi a su alrededor, que es más probable que produzcan interferencias electromagnéticas y provoquen una interrupción de la señal.

P: ¿Los M1 son resistentes al agua y al sudor?

R: Los auriculares M1 son resistentes al agua . Los auriculares están diseñados para ser resistentes al polvo y las gotas de agua, pero no deben sumergirse bajo el agua. No recomendamos usarlos bajo lluvia intensa ni lavarlos. Con agua corriente.

P: ¿Cómo contactar al equipo de atención al cliente de mivo?

R: Si tiene algún problema con el producto, contáctenos a través de us_supportcare@163.com, le responderemos dentro de las 24 horas y resolveremos su problema al 100%.