



## Tango 28

2.4GHz Tiny stubby panel mount WiFi/Bluetooth antenna



### Key Features

- Panel mount, small stubby WiFi antenna
- Tiny 12.3mm height from panel surface to antenna top
- 5mm threaded segment

### General Description

The Tango 28 is a very small panel mount WiFi / Bluetooth antenna. Ideal for small projects located within a good signal zone.

The antenna is compatible with Bluetooth, WiFi and Zigbee enabled IoT devices.

The standard version comes with 100mm of 1.13mm Ø cable and an IPEX / uFL connector. Alternative connectors and cable lengths may be specified for volume orders.

### Additional Considerations

- Allows simple connection onto PCB
- Indoor use only



## Tango 28

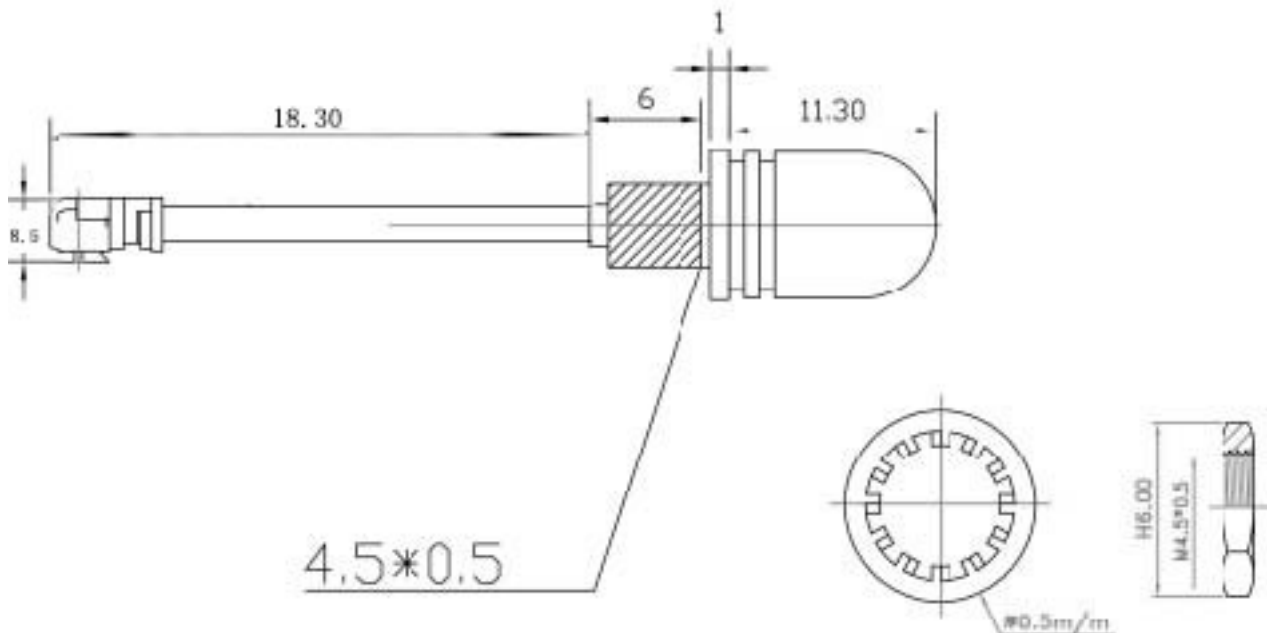
2.4GHz Tiny stubby panel mount WiFi/Bluetooth antenna

### Electrical Specifications

|                        |              |
|------------------------|--------------|
| Operating temperature: | -30 to +65°C |
| Impedance:             | 50 Ohm       |
| Gain:                  | 0 dBi        |
| VSWR:                  | < 1.7:1      |
| Frequency Range:       | 2.4 - 2.5GHz |

### Mechanical Specifications

|                        |                   |
|------------------------|-------------------|
| Dimensions:            | L: 18.3mm 8.5mm Ø |
| Cable:                 | RG178             |
| Operating Temperature: | -25 to +75°C      |
| Storage Temperature:   | -35 to +75°C      |
| Indoor use only        |                   |

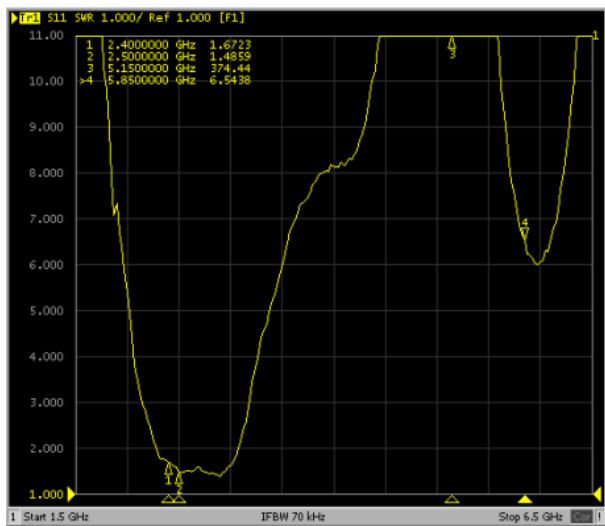




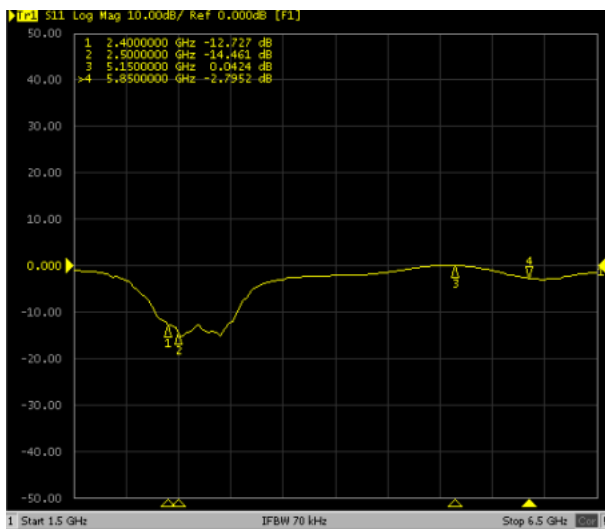
## Tango 28

2.4GHz Tiny stubby panel mount WiFi/Bluetooth antenna

### VSWR



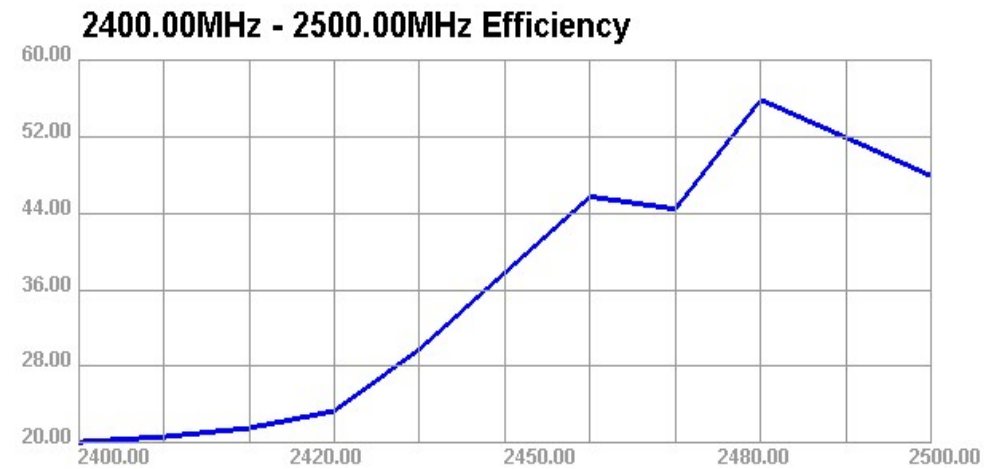
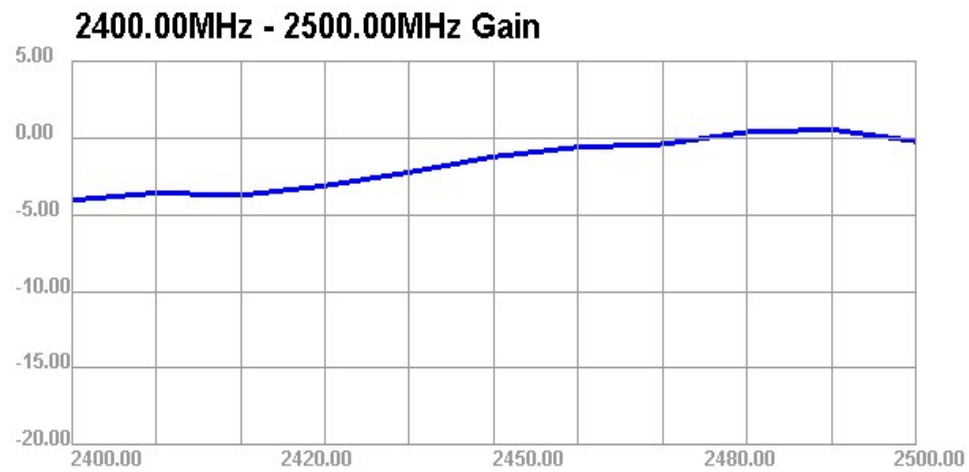
### Return Loss



### Ordering Details

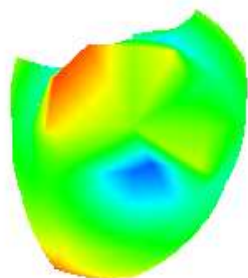
| Part number              | Description  |
|--------------------------|--|
| TANGO28/0.1M/IPEX/S/S/35 | 2.4GHz 12.3mm very small stubby / panel mount WiFi / Bluetooth antenna |

| Passive Test For 2400-2500 |          |           |            |            |         |         |          |          |             |             | Application Information |              |
|----------------------------|----------|-----------|------------|------------|---------|---------|----------|----------|-------------|-------------|-------------------------|--------------|
| Freq (MHz)                 | Effi (%) | Effi (dB) | Gain (dBi) | Gain (dBd) | UHS (%) | DHS (%) | Max (dB) | Min (dB) | Attenut Hor | Attenut Ver | 04Version               | 4.95.303     |
| 2400                       | 20.14    | -6.96     | -4.06      | -6.21      | 10.708  | 9.429   | -4.06    | -13.73   | 49.1        | 49.14       | TotalTime               | 3m 19s 918ms |
| 2410                       | 20.68    | -6.85     | -3.59      | -5.74      | 11.364  | 9.312   | -3.59    | -14.28   | 49.03       | 48.62       | AdditionalInfor         | NULL         |
| 2420                       | 21.58    | -6.66     | -3.74      | -5.89      | 12.092  | 9.492   | -3.74    | -14.77   | 49.16       | 48.27       |                         |              |
| 2430                       | 23.36    | -6.32     | -3.12      | -5.27      | 12.923  | 10.438  | -3.12    | -13.15   | 49.19       | 48.37       |                         |              |
| 2440                       | 29.81    | -5.26     | -2.24      | -4.39      | 16.452  | 13.362  | -2.24    | -12.45   | 49.54       | 48.95       |                         |              |
| 2450                       | 37.8     | -4.22     | -1.23      | -3.38      | 20.732  | 17.072  | -1.23    | -13.45   | 49.81       | 49.33       |                         |              |
| 2460                       | 45.72    | -3.4      | -0.61      | -2.76      | 25.088  | 20.637  | -0.61    | -11.87   | 49.92       | 49.76       |                         |              |
| 2470                       | 44.44    | -3.52     | -0.42      | -2.57      | 24.151  | 20.293  | -0.42    | -12.33   | 49.68       | 48.99       |                         |              |
| 2480                       | 55.84    | -2.53     | 0          | -1.77      | 30.63   | 25.208  | 0.38     | -12.53   | 49.99       | 49.95       |                         |              |
| 2490                       | 51.9     | -2.85     | 0.53       | -1.62      | 28.641  | 23.258  | 0.53     | -11.73   | 50.15       | 49.01       |                         |              |
| 2500                       | 47.88    | -3.2      | -0.23      | -2.38      | 26.412  | 21.467  | -0.23    | -12.45   | 50.02       | 48.88       |                         |              |

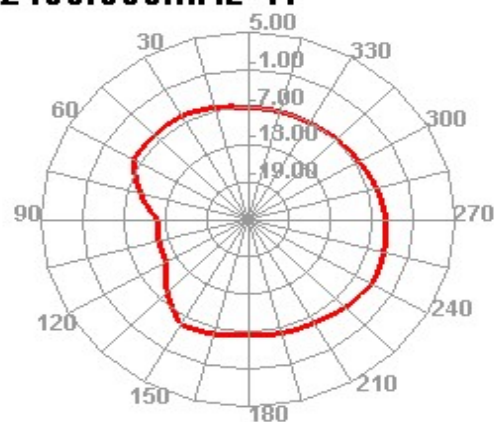


Unit:dBi

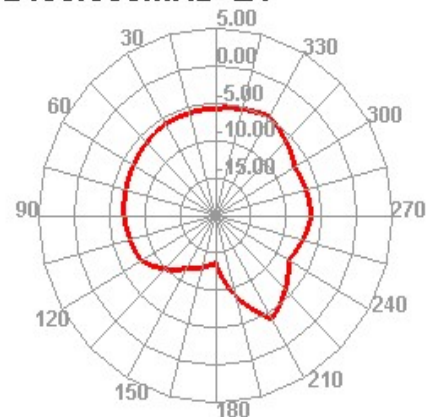
2400.000MHz



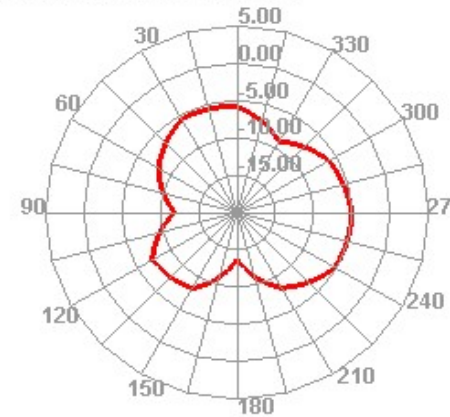
2400.000MHz H



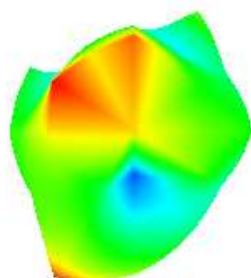
2400.000MHz E1



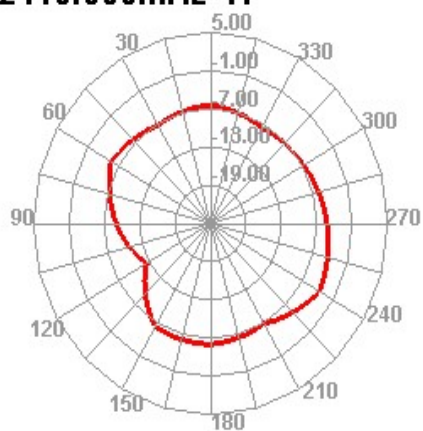
2400.000MHz E2



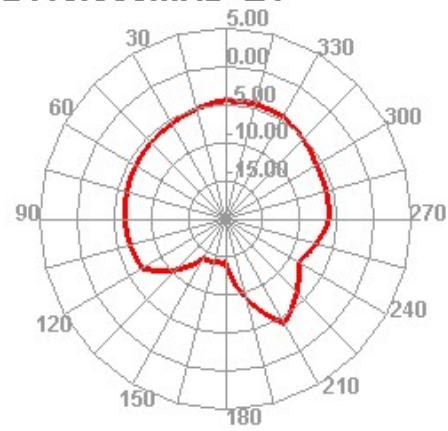
2410.000MHz



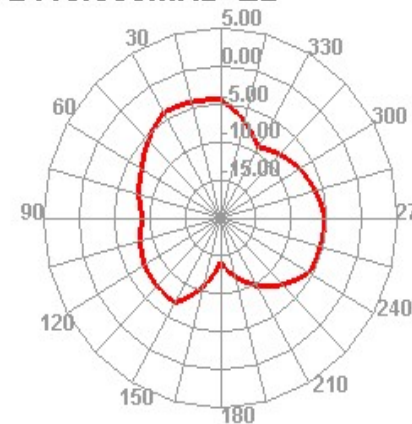
2410.000MHz H



2410.000MHz E1

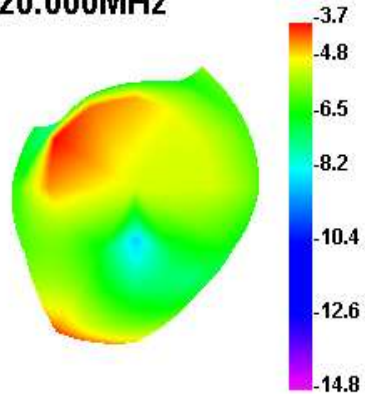


2410.000MHz E2

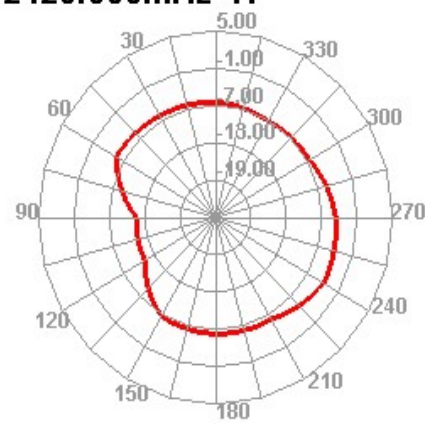


Unit:dBi

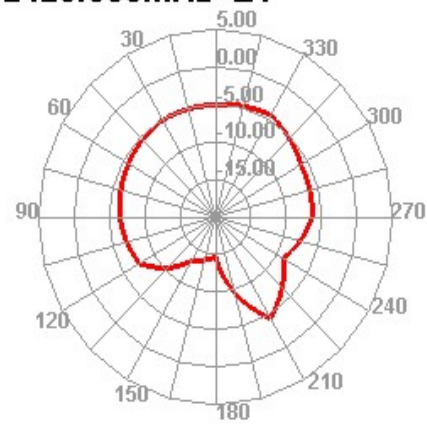
2420.000MHz



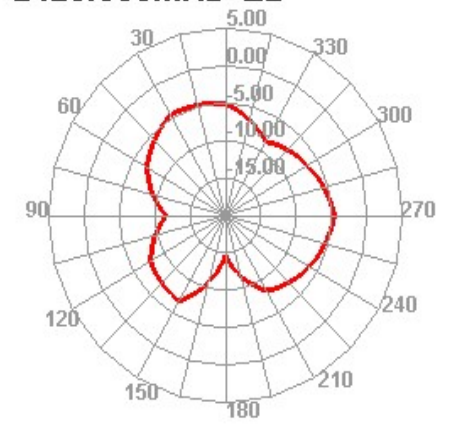
2420.000MHz H



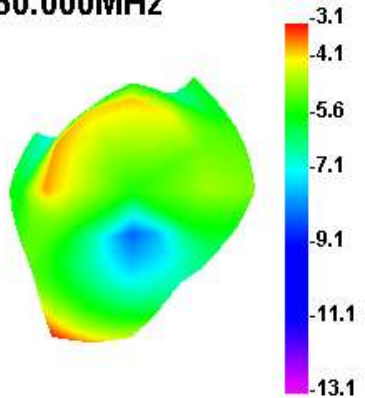
2420.000MHz E1



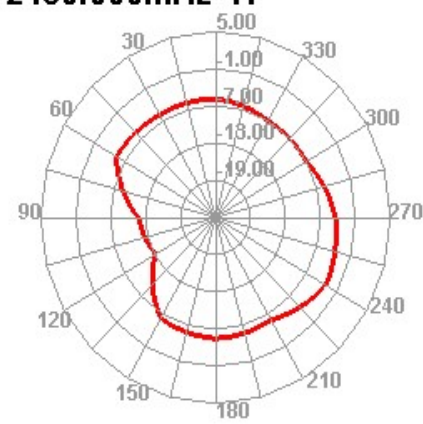
2420.000MHz E2



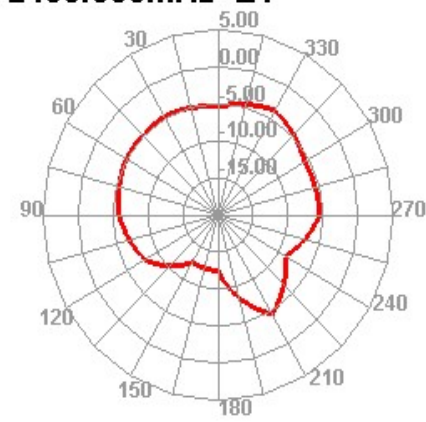
2430.000MHz



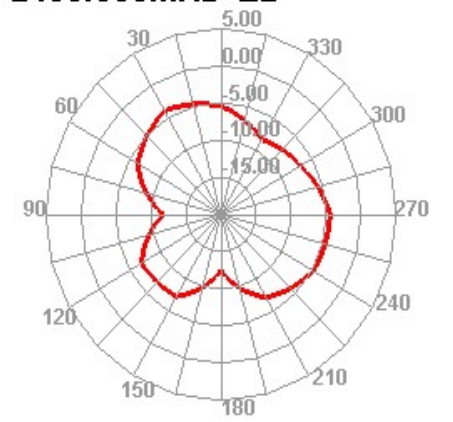
2430.000MHz H



2430.000MHz E1



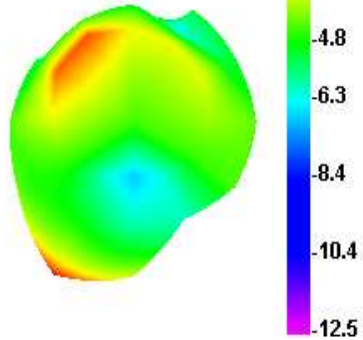
2430.000MHz E2



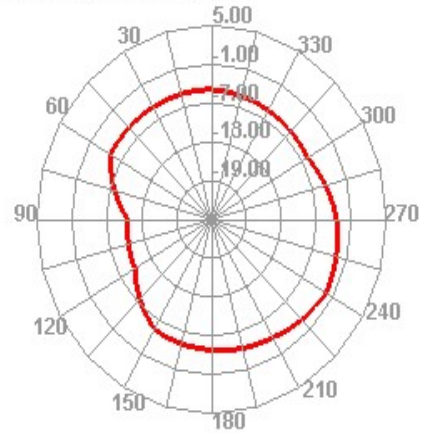


Unit:dBi

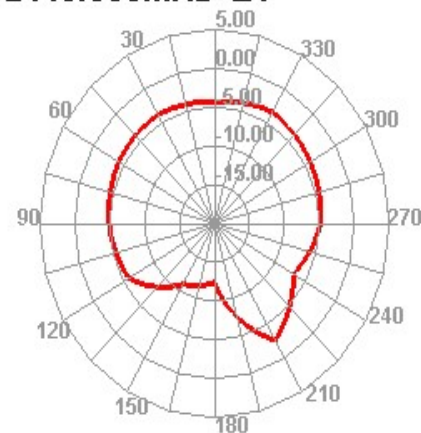
2440.000MHz



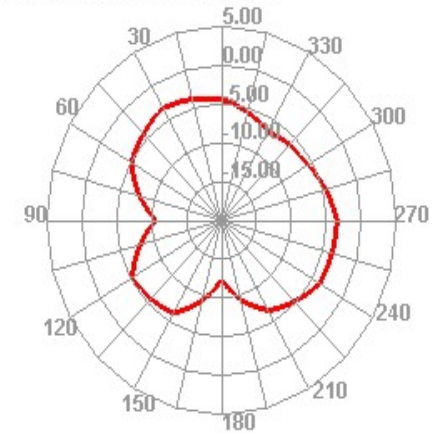
2440.000MHz H



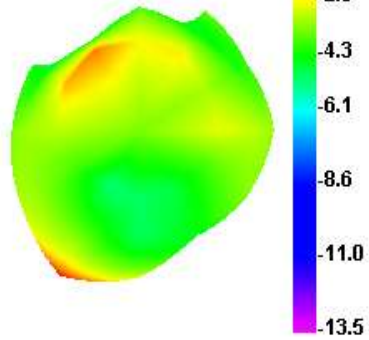
2440.000MHz E1



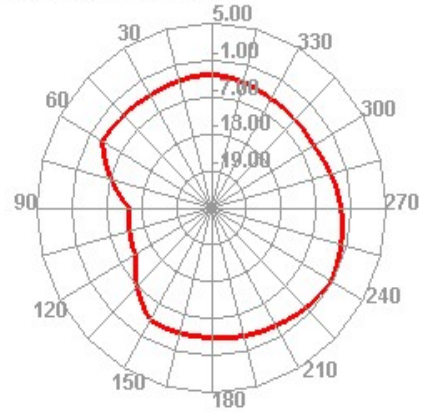
2440.000MHz E2



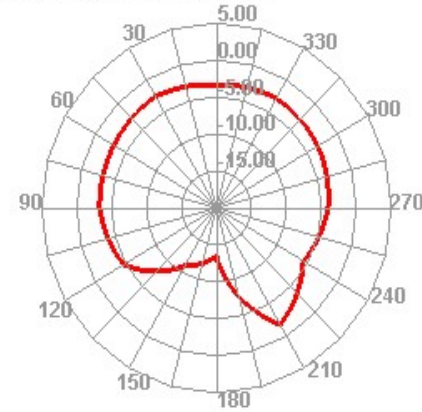
2450.000MHz



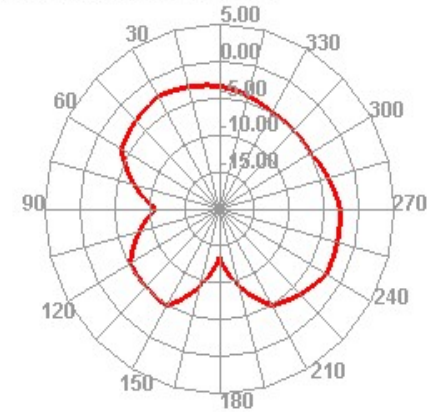
2450.000MHz H



2450.000MHz E1

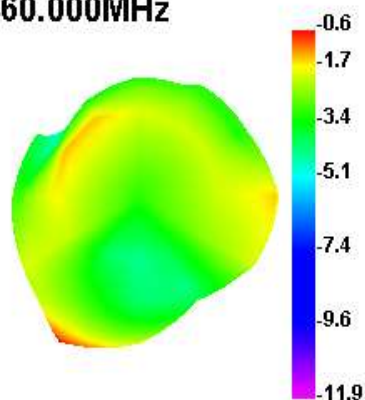


2450.000MHz E2

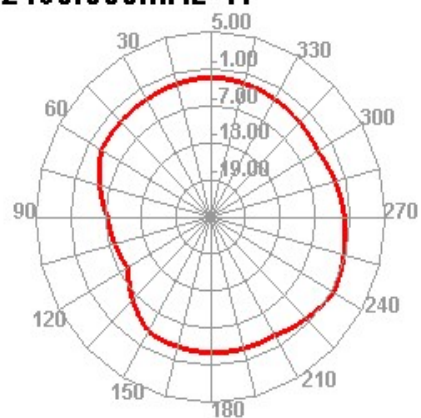


Unit:dBi

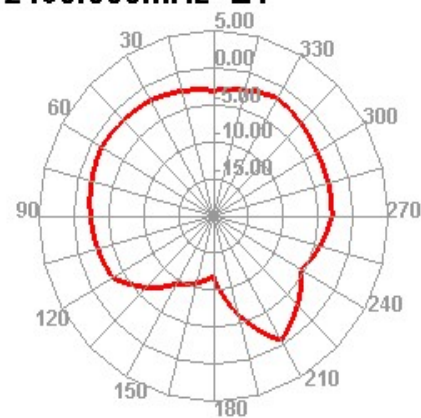
2460.000MHz



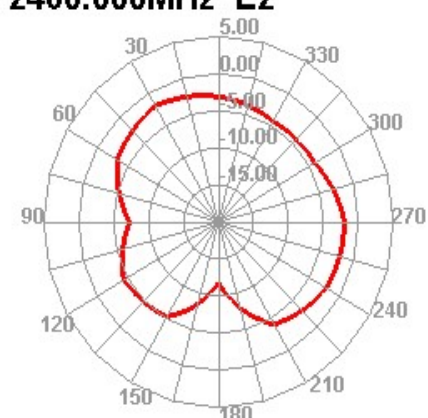
2460.000MHz H



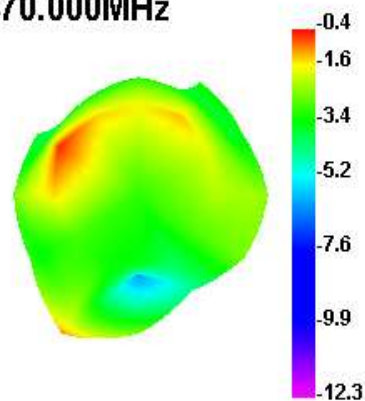
2460.000MHz E1



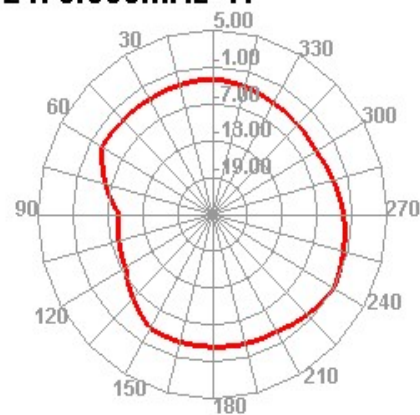
2460.000MHz E2



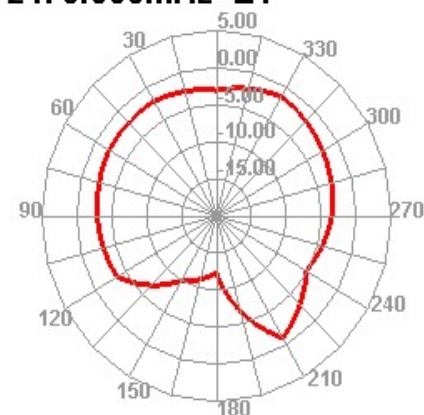
2470.000MHz



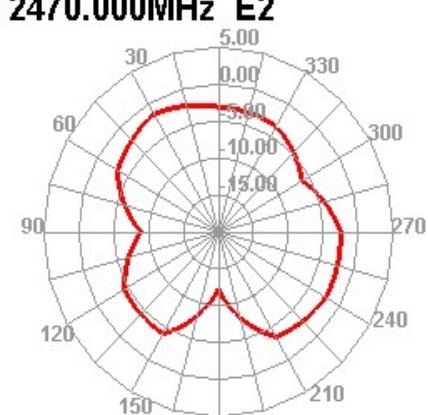
2470.000MHz H



2470.000MHz E1



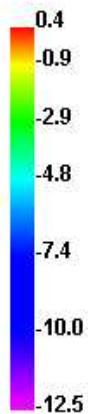
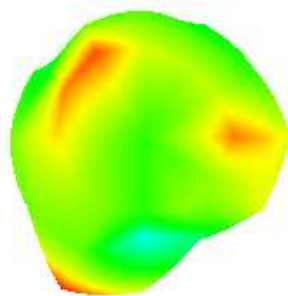
2470.000MHz E2



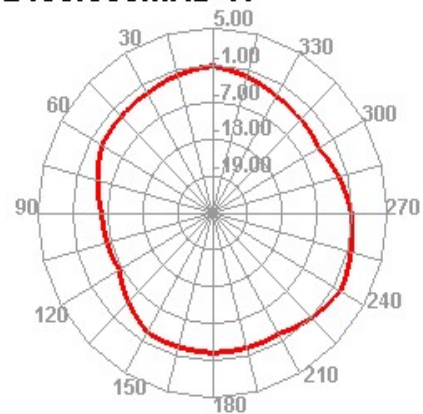


Unit:dBi

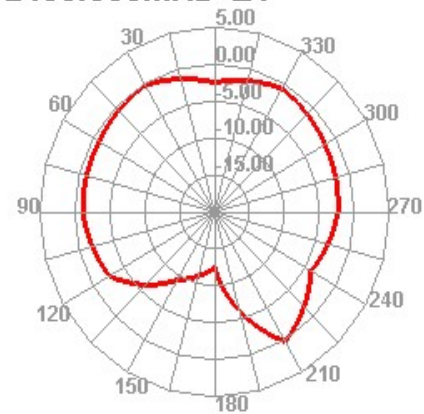
2480.000MHz



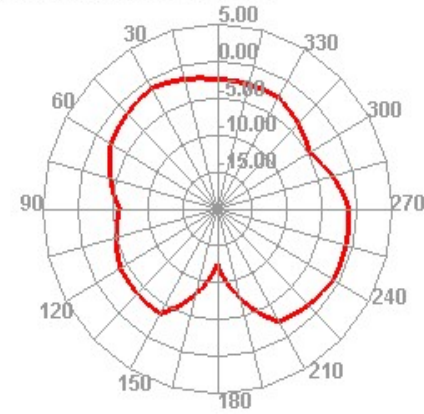
2480.000MHz H



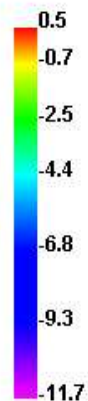
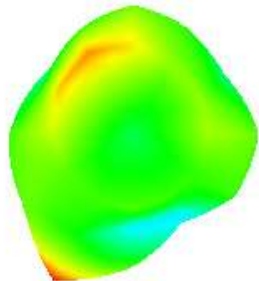
2480.000MHz E1



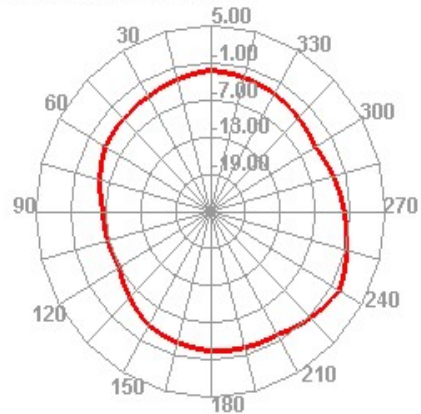
2480.000MHz E2



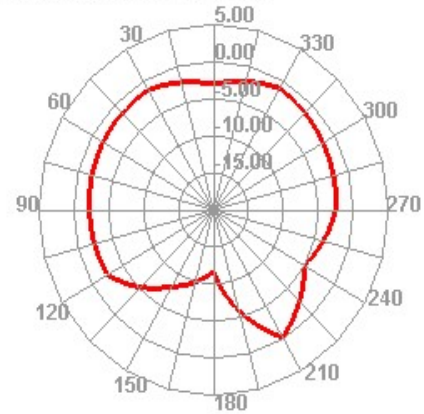
2490.000MHz



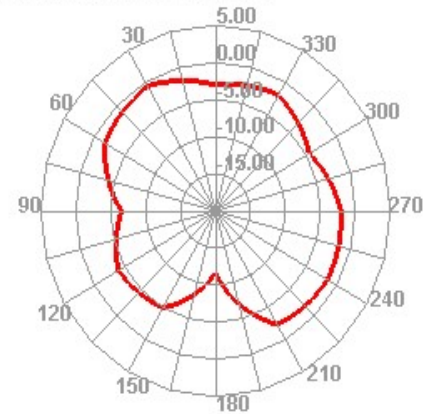
2490.000MHz H



2490.000MHz E1

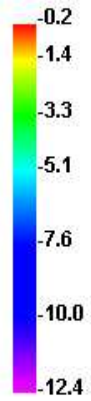
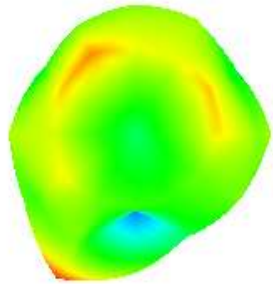


2490.000MHz E2

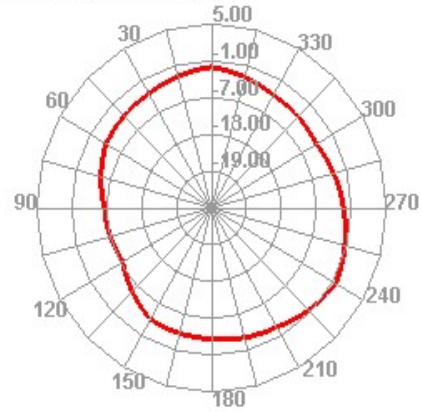


Unit:dBi

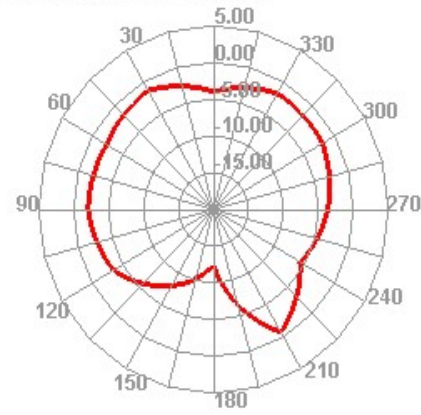
2500.000MHz



2500.000MHz H



2500.000MHz E1



2500.000MHz E2

