

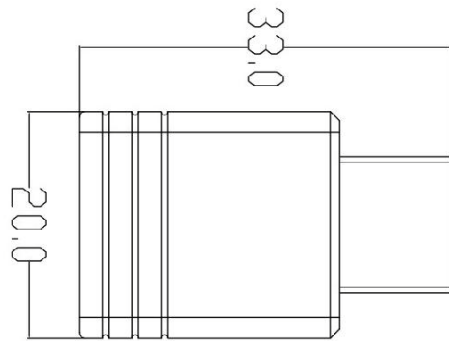
Wifi dongle

Quick Start Guide

Model: EZC-5201BS

Hardware/ WiFi driver installation

Please Visit www.ezcast.com to download driver and user manual.



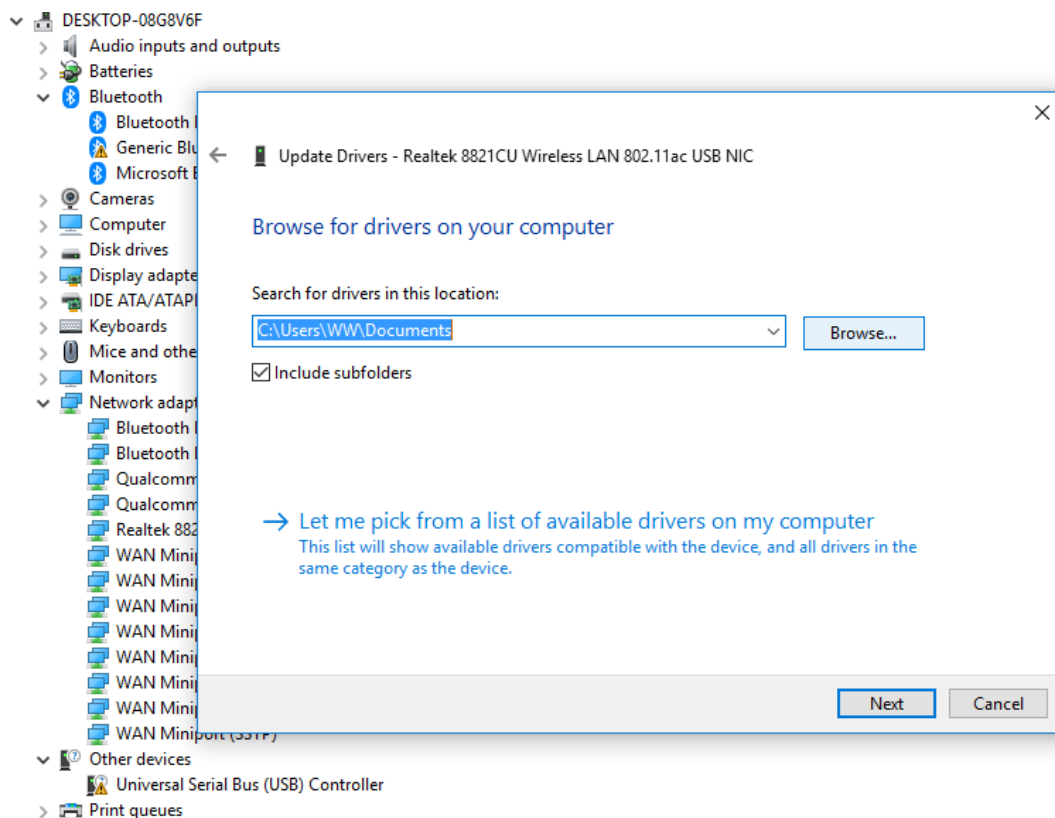
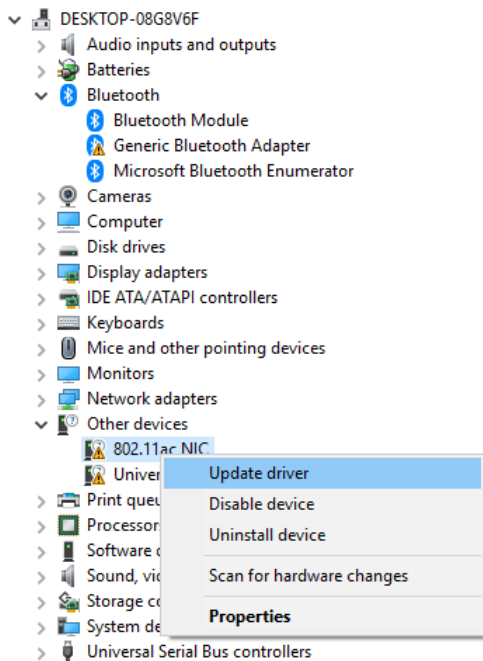
Windows 10:

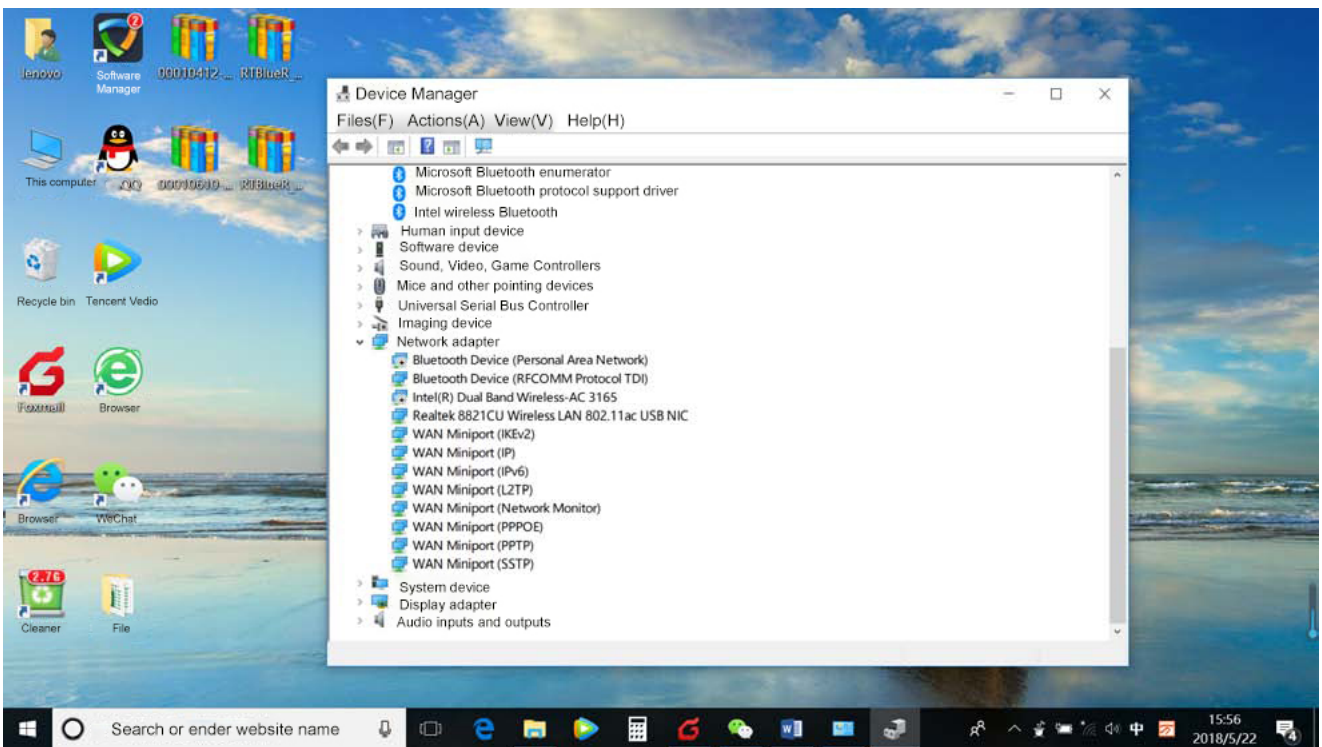
Open your computer or laptop, plug the EZC-5201BS into USB port, then the WiFi driver will be installed automatically.




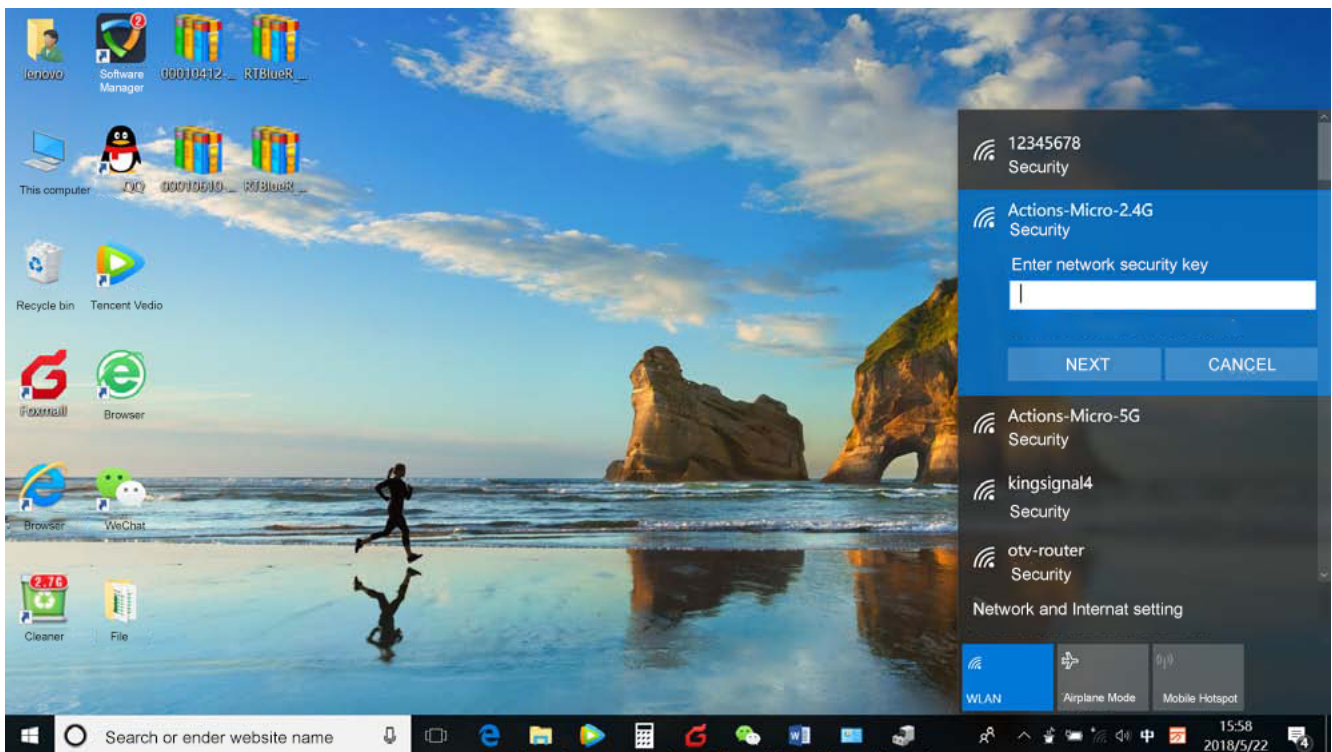
Windows XP/7/8:

Plug the EZC-5201BS into the USB port of your computer, open "Device Manager", browse drivers that download from ezcast.com.



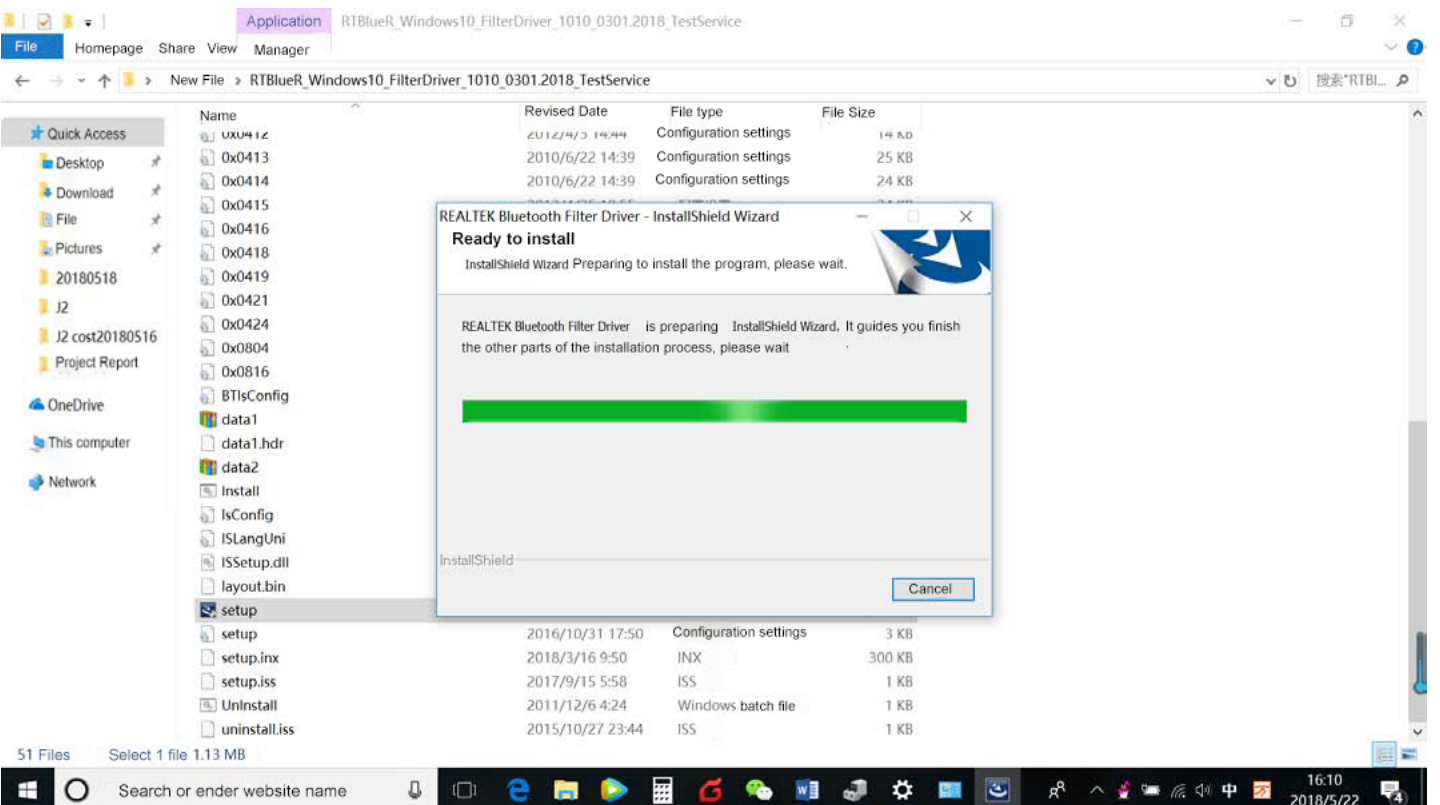
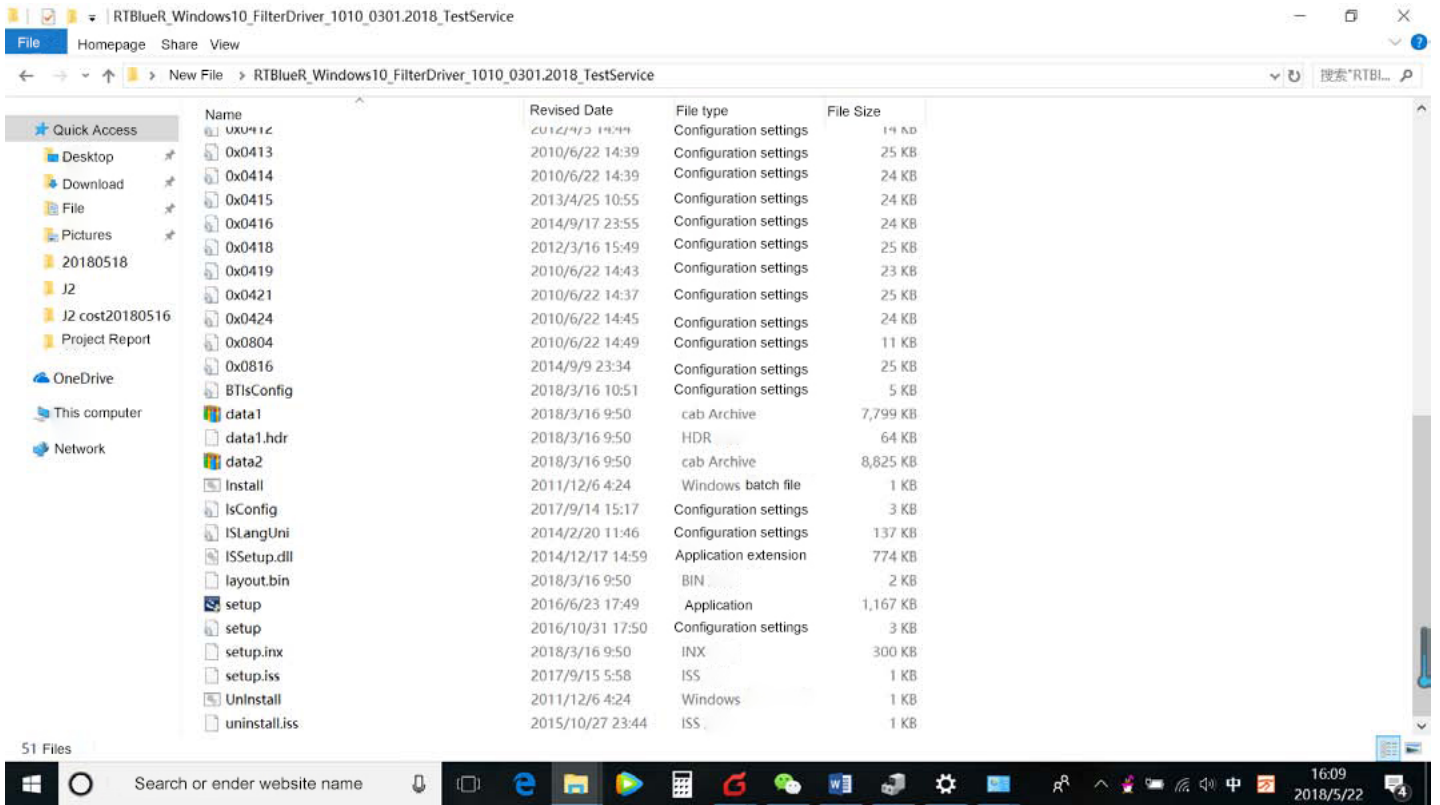


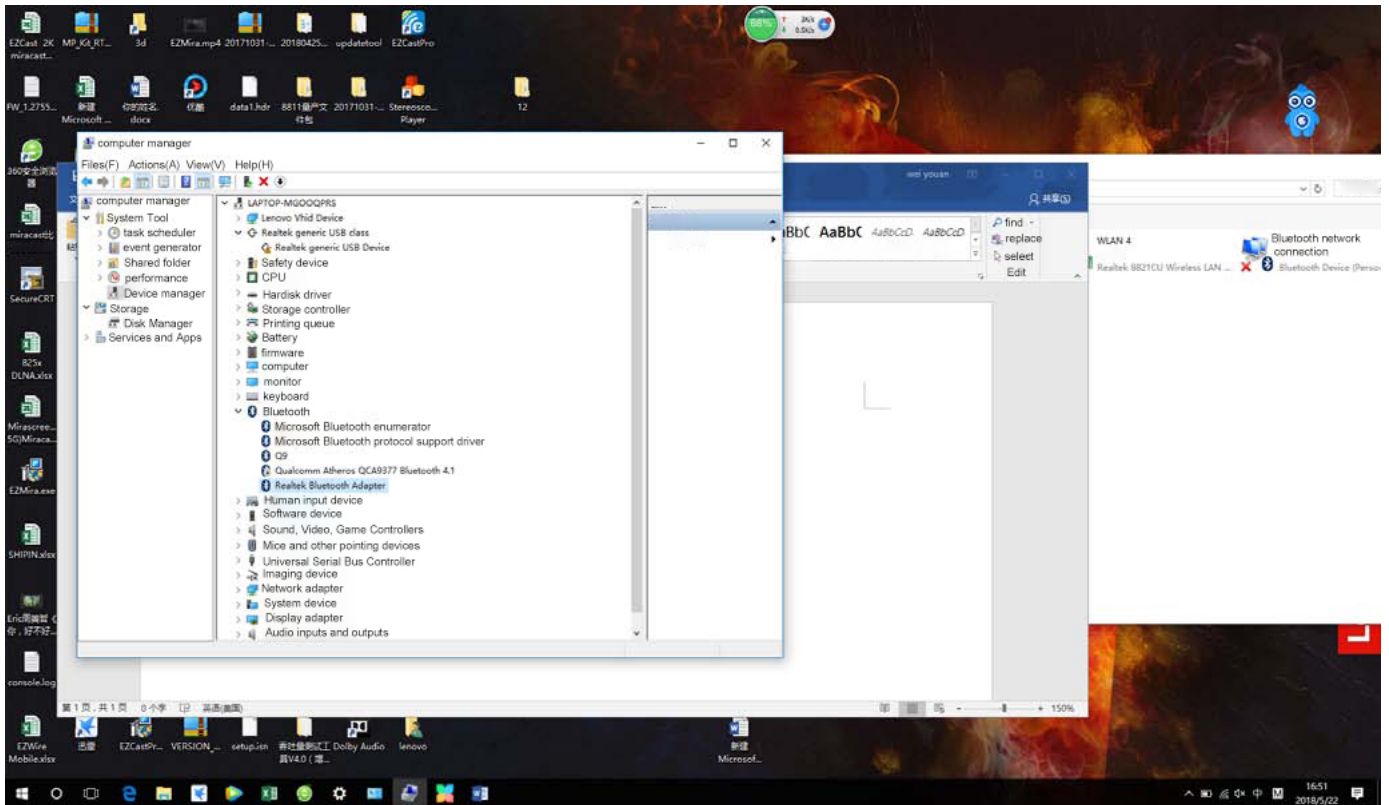
2. Please click wireless icon  in the lower right corner, choose the available WiFi router, enter router's password and wait for the connection to be completed.



Bluetooth driver Installation

1. Please visit www.ezcast.com to download the Bluetooth driver.
2. Open this folder, click the Setup.exe to complete the installation.





Note: Because there is only one Bluetooth work on the same PC, if you need to use the Bluetooth function of this product, please make sure that the Bluetooth that comes with the PC is disabled.

Learn More

Visit www.ezcast.com for more information.

Visit www.YouTube.com/EZCast for video tutorials.

FCC Caution:

Any Changes or modifications not expressly approved by the party responsible for compliance could void the user's authority to operate the equipment.

This device complies with part 15 of the FCC Rules. Operation is subject to the following two conditions:

(1) This device may not cause harmful interference, and (2) this device must accept any interference received, including interference that may cause undesired operation.

IMPORTANT NOTE:

Note: This equipment has been tested and found to comply with the limits for a Class B digital device, pursuant to part 15 of the FCC Rules. These limits are designed to provide reasonable protection against harmful interference in a residential installation. This equipment generates, uses and can radiate radio frequency energy and, if not installed and used in accordance with the instructions, may cause harmful interference to radio communications. However, there is no guarantee that interference will not occur in a particular installation. If this equipment does cause harmful interference to radio or television reception, which can be determined by turning the equipment off and on, the user is encouraged to try to correct the interference by one or more of the following measures:

- Reorient or relocate the receiving antenna.
- Increase the separation between the equipment and receiver.
- Connect the equipment into an outlet on a circuit different from that to which the receiver is connected.
- Consult the dealer or an experienced radio/TV technician for help.

FCC Radiation Exposure Statement:

This equipment complies with FCC radiation exposure limits set forth for an uncontrolled environment.

ISED Warning

This device complies with Innovation, Science, and Economic Development Canada licence-exempt RSS standard(s). Operation is subject to the following two conditions:

- (1) this device may not cause interference, and
- (2) this device must accept any interference, including interference that may cause undesired operation of the device.

Le présent appareil est conforme aux CNR d'Innovation, Sciences et Développement économique Canada applicables aux appareils radio exempts de licence. L'exploitation est autorisée aux deux conditions suivantes :

- (1) l'appareil ne doit pas produire de brouillage, et
- (2) l'utilisateur de l'appareil doit accepter tout brouillage radioélectrique subi, même si le brouillage est susceptible d'en compromettre le fonctionnement.

The device is compliance with RF exposure guidelines, users can obtain Canadian information on RF exposure and compliance.

Le présent appareil est conforme Après examen de ce matériel aux conformité ou aux limites d'intensité de champ

RF, les utilisateurs peuvent sur l'exposition aux radiofréquences et la conformité and compliance d'acquérir les informations correspondantes.

Specific Absorption Rate (SAR) information

SAR tests are conducted using standard operating positions accepted by the FCC/IC with the equipment transmitting at its highest certified power level in all tested frequency bands, although the SAR is determined at the highest certified power level, the actual SAR level of the equipment while operating can be well below the maximum value. Before equipment is available for sale to the public, it must be tested and certified to the FCC/IC that it does not exceed the exposure limit established by the FCC/IC, tests for each phone are performed in positions and locations as required by the FCC/IC. This equipment has been tested and meets the FCC /IC RF exposure guidelines when used with an accessory designated for this product or when used with an accessory that contains no metal and that positions the handset a minimum of 5mm from the body. Non-compliance with the above restrictions may result in violation of RF exposure guidelines.