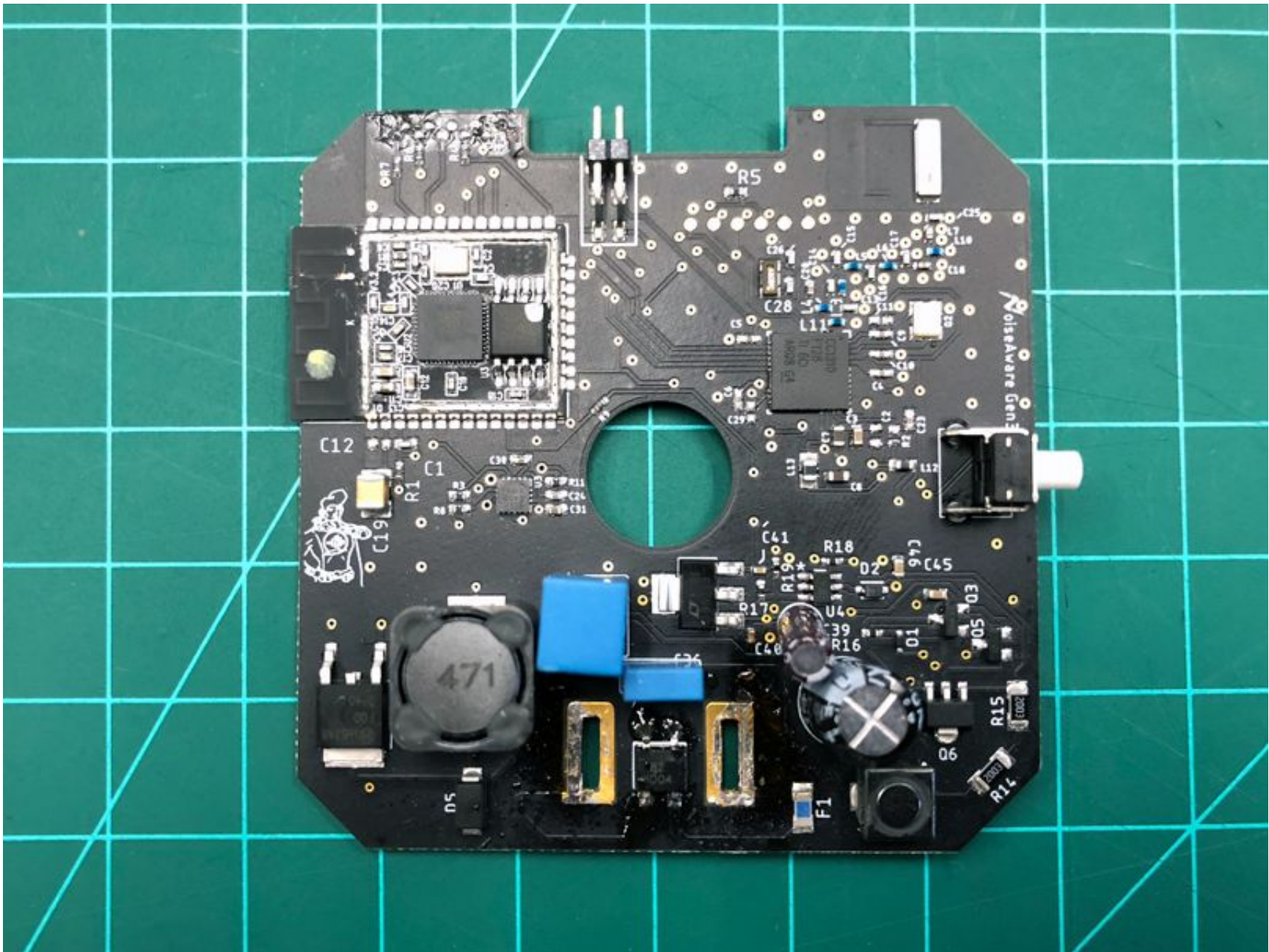


Gen3 Collector - Assembly Drawing

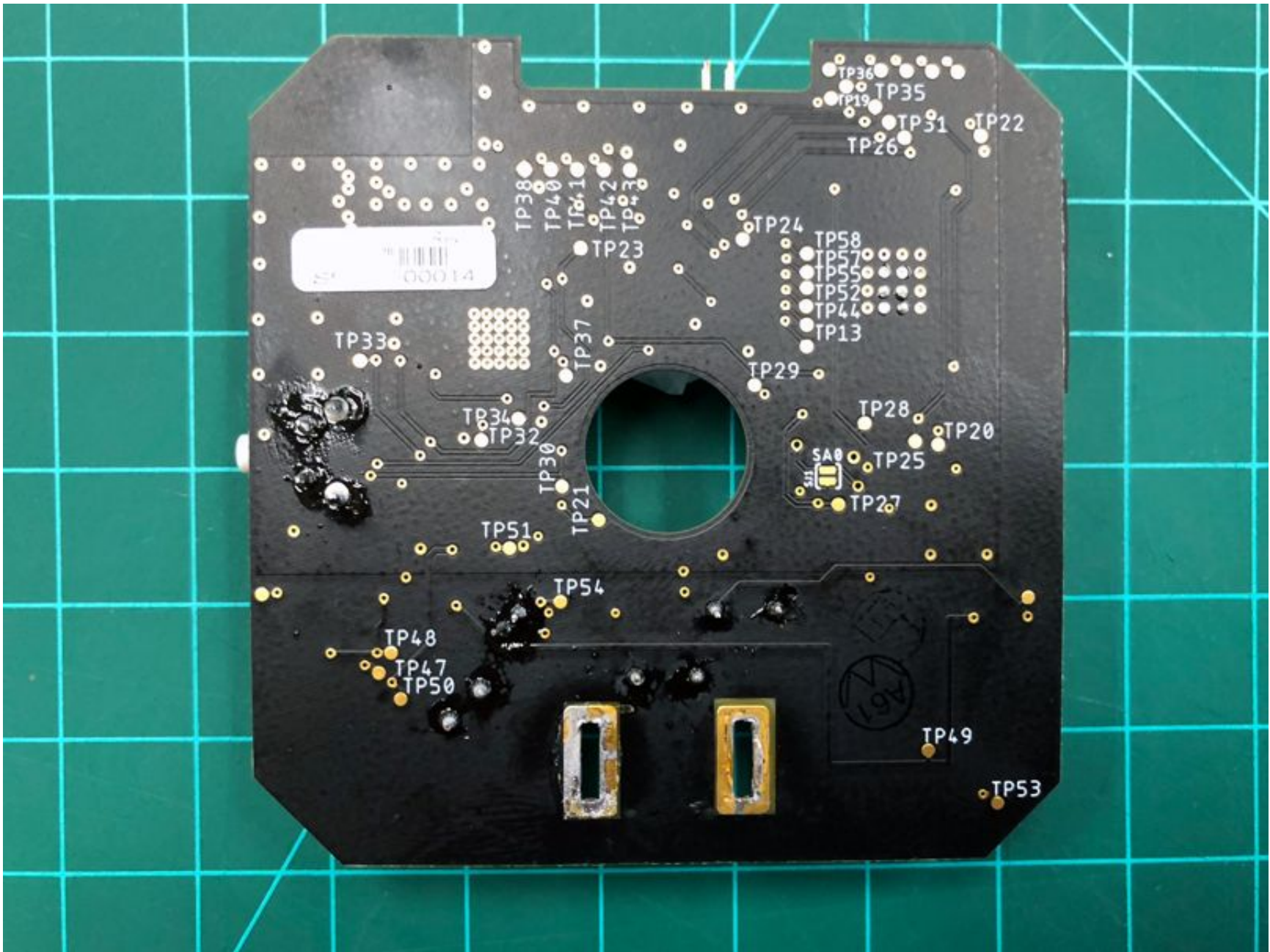


Gen3 Collector - Electronics Subassembly (shows placement of Main PCBA and Mic PCBA)



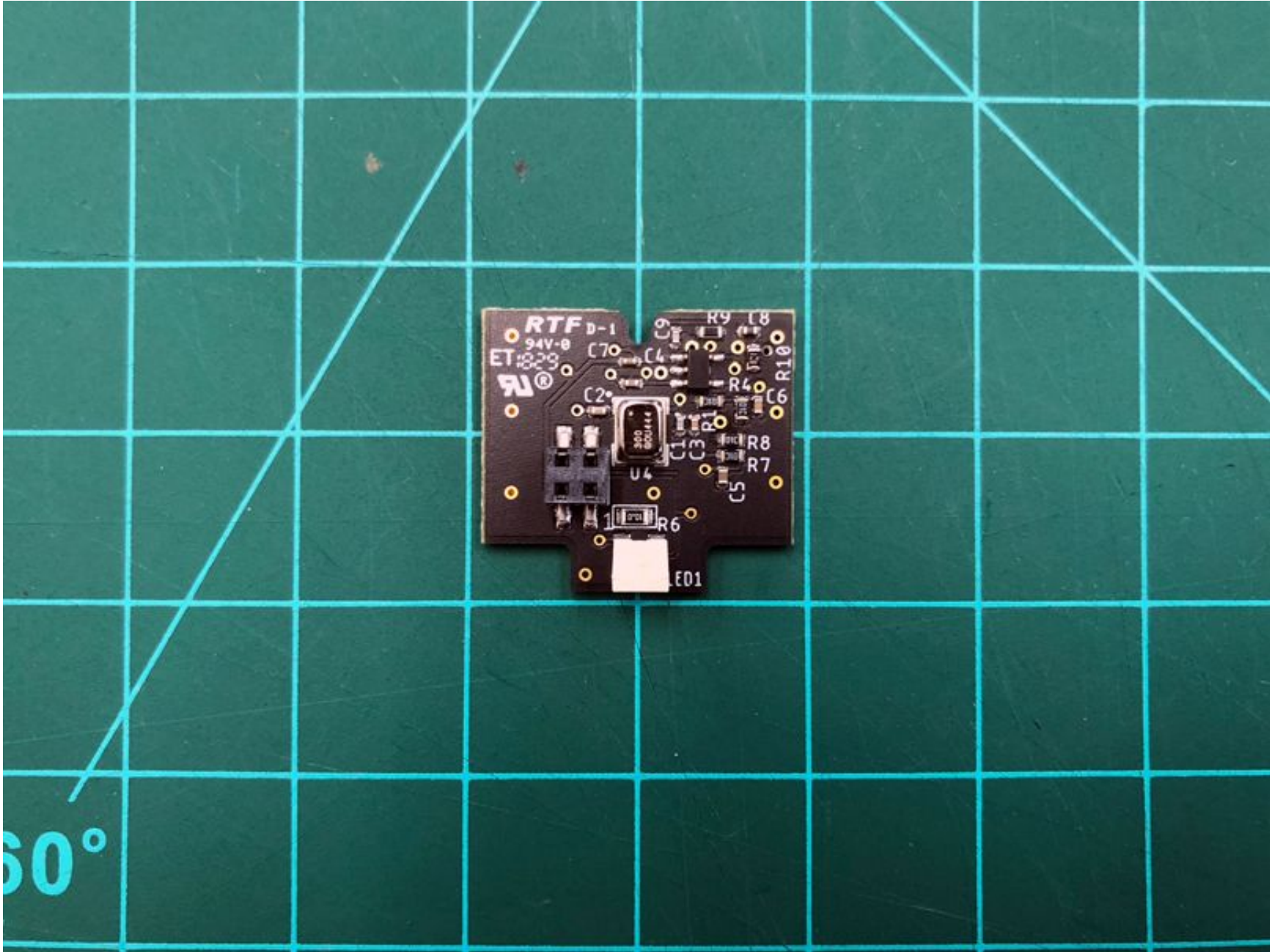


Gen3 Collector - Main PCBA Top (w/o ESP shield)

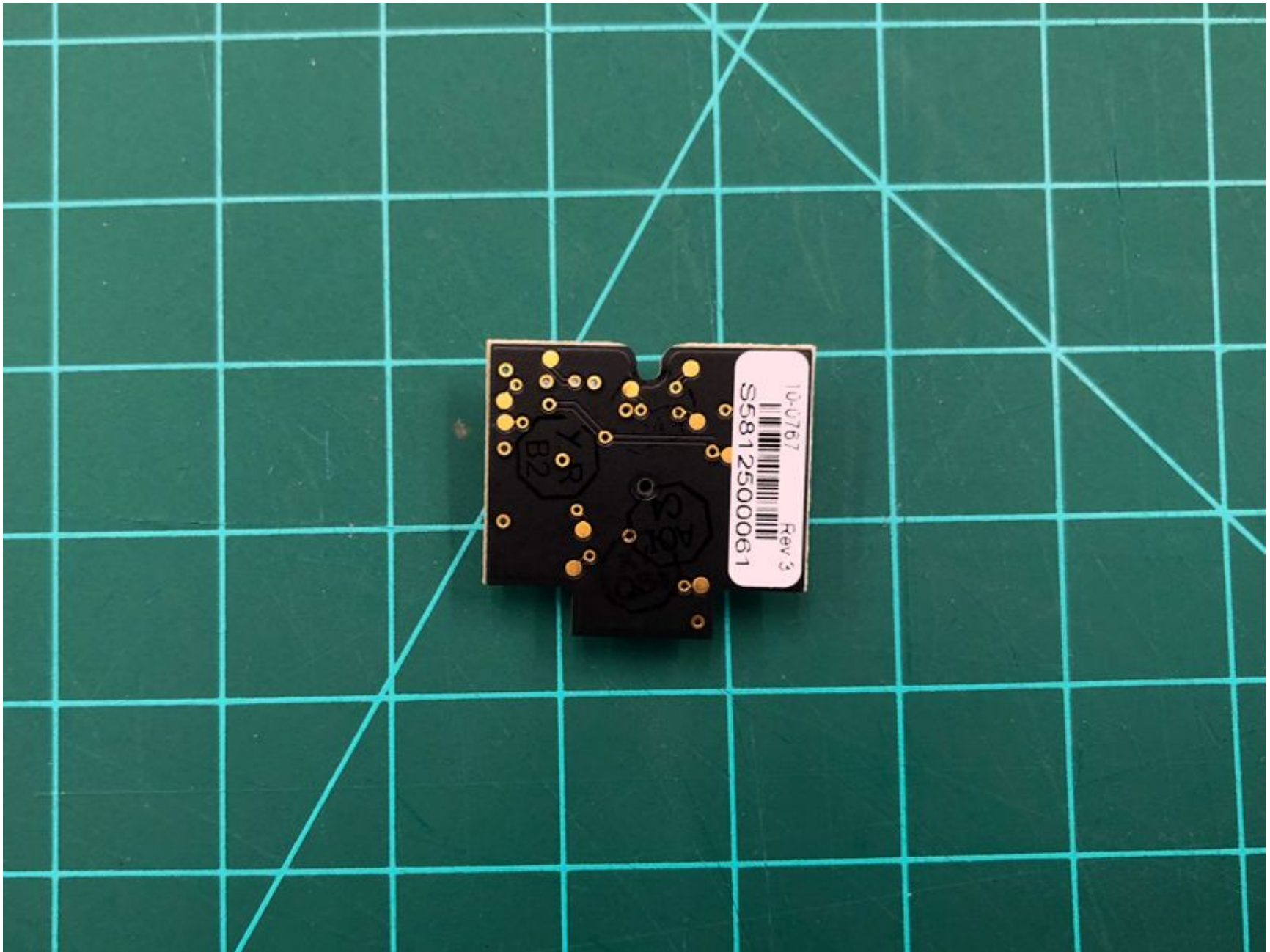


Gen3 Collector - Main PCBA Bottom





Gen3 Collector - Mic PCBA Top



Gen3 Collector - Mic PCBA Bottom





Gen3 Collector - All Parts