

## Smart Wi-Fi Plug Mini User Manual

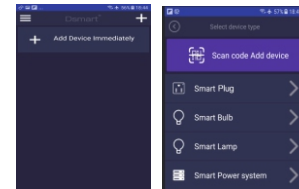
Scan the QR code and install the Dsmart App for either IOS or Android. Once downloaded, the App will ask you to register your device. Sign up for an account



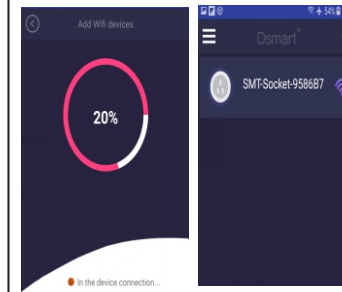
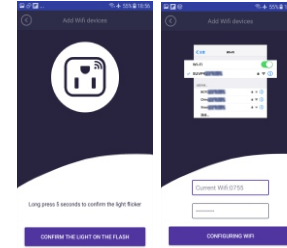
### Quick mode configuration (common)

1. make sure quick mode configuration is initiated the indicator light blinks blue rapidly (twice per second). If it blinks blue slowly (once every 3seconds), press and hold the power button on the Mini Smart plug for 6seconds until the indicator light blinks rapidly.

2. Tap the icon “+” on the top right corner of smart your smart life ,choose Smart Plug



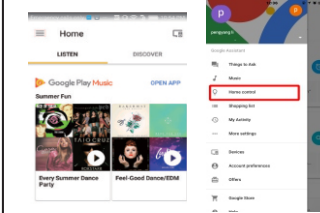
3. Follow the in-app instructions to connect the Smart Plug to your Wi-Fi network.



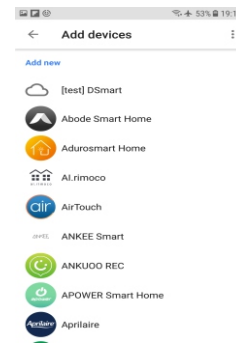
### How to connect Smart Plug Mini to Google Home

1. Launch the Google Home App and make sure Google Home speaker is installed. If not, please follow Google Home speaker installation instruction to complete the installation.

2. Once Google Home is installed, in the upper left corner of App Home page, click button to show App menu. Then clicks “Home Control” in the menu.



3. On “Add devices” page, scroll down to find “Dsmart” and then click it. Sign in “Dsmart”



### Dsmart Google SmartHome login validate

Dear users, you will verify Surpvsolar account from Google SmartHome




Q21U

Login Authorization

<https://user.solarsuvpr.com>

### Dsmart Google SmartHome login validate

Dear users, you will verify Surpvsolar account from Google SmartHome

Authorization Success

4. After successful account linking, in Google Home App you can see all the smart devices from your Dsmart APP account. You can assign rooms for each device.

5. Now you can use Google Home to control your smart devices, you can say like:

*Ok Google, turn on/off socket*

*Ok Google, srt bedroomsocket*

### 1. What devices can I control with the Mini Smart Plug?

You can control lights, fans, portable heaters, and any small appliances in accordance with the Mini Smart Plug's

specifications.

### 2. What should I do When I cannot turn Mini Smart Plug on or off?

Make sure your mobile devices and the Mini Smart Plug are connected to the same Wi-Fi network.

Make sure the devices connected to the Mini Smart Plug are turned on.

### 3. What should I do when device configuration process has failed?

Check whether the Mini Smart Plug is powered on or not.

Check your network connectivity. Make sure the router is working properly:

If the router is dual-band router, select 2.4G net work and then add Mini Smart Plug.

Enable the router's broadcasting function. Configure the encryption method as WPA2-PSK and authorization type as AES, or set both as auto.

WPA2-PSK and authorization type as AES, or set both as auto.

Make sure the password of your Wi-Fi network entered in App is correct when adding Mini Smart Plug.

### 6. How to reset this device?

Factory reset After Mini Smart Plug is plugged into a power socket, press and hold (for 6 seconds) the power button for factory reset until the indicator light blinks blue rapidly.

Lighting pattern:

## **FCC Statement**

This equipment has been tested and found to comply with the limits for a Class B digital device, pursuant to part 15 of the FCC rules. These limits are designed to provide reasonable protection against harmful interference in a residential installation. This equipment generates, uses and can radiate radio frequency energy and, if not installed and used in accordance with the instructions, may cause harmful interference to radio communications. However, there is no guarantee that interference will not occur in a particular installation. If this equipment does cause harmful interference to radio or television reception, which can be determined by turning the equipment off and on, the user is encouraged to try to correct the interference by one or more of the following measures:

- Reorient or relocate the receiving antenna.
- Increase the separation between the equipment and receiver.
- Connect the equipment into an outlet on a circuit different from that to which the receiver is connected.
- Consult the dealer or an experienced radio/TV technician for help.

To assure continued compliance, any changes or modifications not expressly approved by the party.

Responsible for compliance could void the user's authority to operate this equipment. (Example- use only shielded interface cables when connecting to computer or peripheral devices).

This equipment complies with Part 15 of the FCC Rules. Operation is subject to the following two conditions:

- (1) This device may not cause harmful interference, and
- (2) This device must accept any interference received, including interference that may cause undesired operation.

## **FCC Radiation Exposure Statement:**

The equipment complies with FCC Radiation exposure limits set forth for uncontrolled environment. This equipment should be installed and operated with minimum distance 20cm between the radiator and your body.