

# FCC TEST REPORT

Client Name : Ugreen Group Limited

Address : UGREEN Building, Longcheng Industrial Park  
Longguanxi Road, Longhua, ShenZhen, China

Product Name : HiTune T2 True Wireless Earbuds Charging Case

Date : Mar. 12, 2021

**Shenzhen Anbotek Compliance Laboratory Limited**



# Contents

|   |    |
|---|----|
| 1. General Information.....                       | 4  |
| 1.1. Client Information.....                      | 4  |
| 1.2. Description of Device (EUT).....             | 4  |
| 1.3. Auxiliary Equipment Used During Test.....    | 5  |
| 1.4. Description of Test Modes.....               | 5  |
| 1.5. Description Of Test Setup.....               | 6  |
| 1.6. Test Equipment List.....                     | 7  |
| 1.7. Measurement Uncertainty.....                 | 8  |
| 1.8. Description of Test Facility.....            | 8  |
| 2. Summary of Test Results.....                   | 9  |
| 3. Conducted Emission Test.....                   | 10 |
| 3.1. Test Standard and Limit.....                 | 10 |
| 3.2. Test Setup.....                              | 10 |
| 3.3. Test Procedure.....                          | 10 |
| 3.4. Test Data.....                               | 10 |
| 4. Radiation Spurious Emission and Band Edge..... | 15 |
| 4.1. Test Standard and Limit.....                 | 15 |
| 4.2. Test Setup.....                              | 15 |
| 4.3. Test Procedure.....                          | 16 |
| 4.4. Test Data.....                               | 16 |
| 5. Antenna Requirement.....                       | 21 |
| 5.1. Test Standard and Requirement.....           | 21 |
| 5.2. Antenna Connected Construction.....          | 21 |
| APPENDIX I -- TEST SETUP PHOTOGRAPH.....          | 22 |
| APPENDIX II -- EXTERNAL PHOTOGRAPH.....           | 24 |
| APPENDIX III -- INTERNAL PHOTOGRAPH.....          | 28 |

# TEST REPORT

Applicant : Ugreen Group Limited  
Manufacturer : Ugreen Group Limited  
Product Name : HiTune T2 True Wireless Earbuds Charging Case  
Model No. : WS105, 80652, 80653, 30613, 30614  
Trade Mark : **UGREEN**  
Rating(s) : Input: DC 5V, 400mA(with DC 3.7V, 500 mAh Battery inside)  
Wireless input: DC 5V, 400mA  
Test Standard(s) : **FCC Part15 Subpart C, Paragraph 15.209**  
Test Method(s) : **ANSI C63.10: 2013**

The device described above is tested by Shenzhen Anbotek Compliance Laboratory Limited to determine the maximum emission levels emanating from the device and the severe levels of the device can endure and its performance criterion. The measurement results are contained in this test report and Shenzhen Anbotek Compliance Laboratory Limited is assumed full of responsibility for the accuracy and completeness of these measurements. Also, this report shows that the EUT (Equipment Under Test) is technically compliant with the FCC Part 15 Subpart C requirements.

This report applies to above tested sample only and shall not be reproduced in part without written approval of Shenzhen Anbotek Compliance Laboratory Limited.

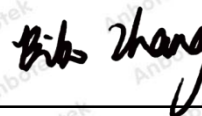
Date of Receipt : Jan. 20, 2021  
Date of Test : Jan. 20~Feb. 04, 2021

Prepared By



(Engineer / Yilia Zhong)

Reviewer



(Supervisor / Bibo Zhang)

Approved & Authorized Signer



(Manager / Kingkong Jin)

## 1. General Information

### 1.1. Client Information

|              |   |  |
|--------------|---|--|
| Applicant    | : | Ugreen Group Limited   |
| Address      | : | UGREEN Building,Longcheng Industrial Park Longguanxi Road,Longhua, ShenZhen, China |
| Manufacturer | : | Ugreen Group Limited   |
| Address      | : | UGREEN Building,Longcheng Industrial Park Longguanxi Road,Longhua, ShenZhen, China |
| Factory      | : | Dongguan Sendonglv Electronics Co.,Ltd   |
| Address      | : | 111,Nanjiang Road,Humen Town,Dongguan City,China                                   |

### 1.2. Description of Device (EUT)

|   |   |   |                             |
|---|---|---|-----------------------------|
| Product Name  | : | HiTune T2 True Wireless Earbuds Charging Case   |                             |
| Model No.   | : | WS105, 80652, 80653, 30613, 30614<br>(Note: All samples are the same except the model number, so we prepare "WS105" for test only.) |                             |
| Trade Mark  | : | <b>UGREEN</b>   |                             |
| Test Power Supply   | : | AC 120V, 60Hz for adapter / AC 240V, 60Hz for adapter   |                             |
| Test Sample No.   | : | 1-2-1(Normal Sample), 1-2-2(Engineering Sample)   |                             |
| Product Description   | : | Operation Frequency:  | 111-205KHz                  |
|   |   | Modulation Type:  | ASK                         |
|   |   | Antenna Type:   | Inductive loop coil Antenna |
|   |   | Antenna Gain(Peak):   | 0 dBi                       |
| <b>Remark:</b> 1) For a more detailed features description, please refer to the manufacturer's specifications or the User's Manual. |   |   |                             |

### 1.3. Auxiliary Equipment Used During Test

|                  |   |   |
|------------------|---|---|
| Adapter          | : | M/N: A2013<br>Input: AC 100-240V, 0.7A, 50-60Hz<br>Output: 3.6-5.5V $\Rightarrow$ 3A/ 6.5-9V $\Rightarrow$ 2A/ 9-12V $\Rightarrow$ 1.5A |
| Wireless Charger | : | M/N: WD-265B<br>Input: 5V $\Rightarrow$ 2A, 9V $\Rightarrow$ 1.67A<br>Output: 5V $\Rightarrow$ 1A, 9V $\Rightarrow$ 1.1A(10W max)       |

### 1.4. Description of Test Modes

To investigate the maximum EMI emission characteristics generates from EUT, the test system was pre-scanning tested base on the consideration of following EUT operation mode or test configuration mode which possible have effect on EMI emission level. Each of these EUT operation mode(s) or test configuration mode(s) mentioned above was evaluated respectively.

| Pretest Mode | Description            |
|--------------|------------------------|
| Mode 1       | Wireless Charging Mode |

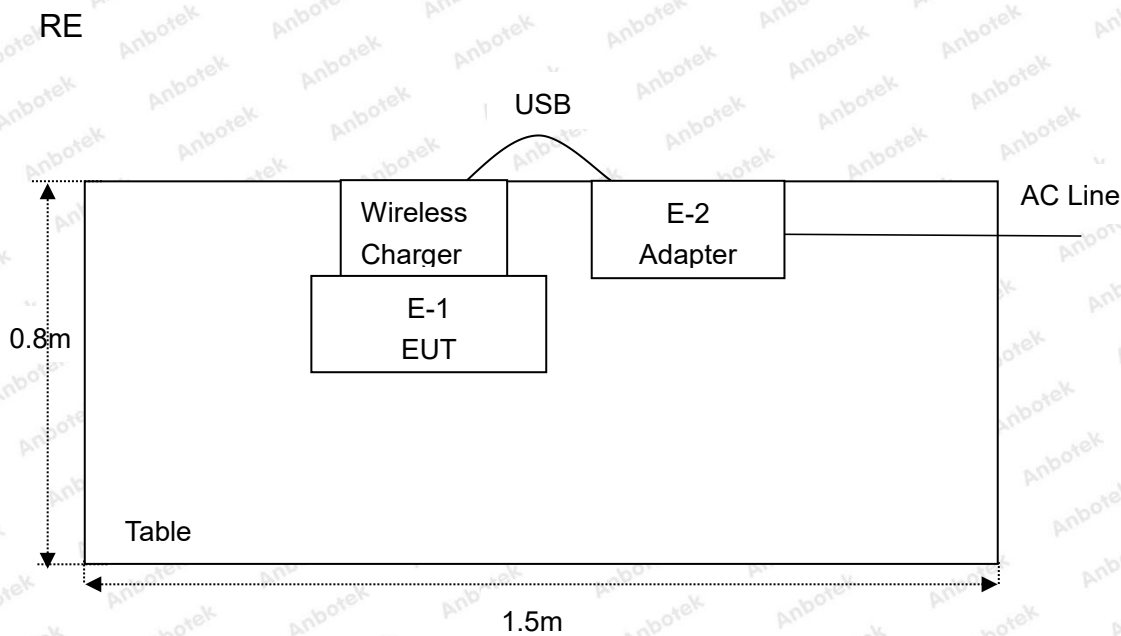
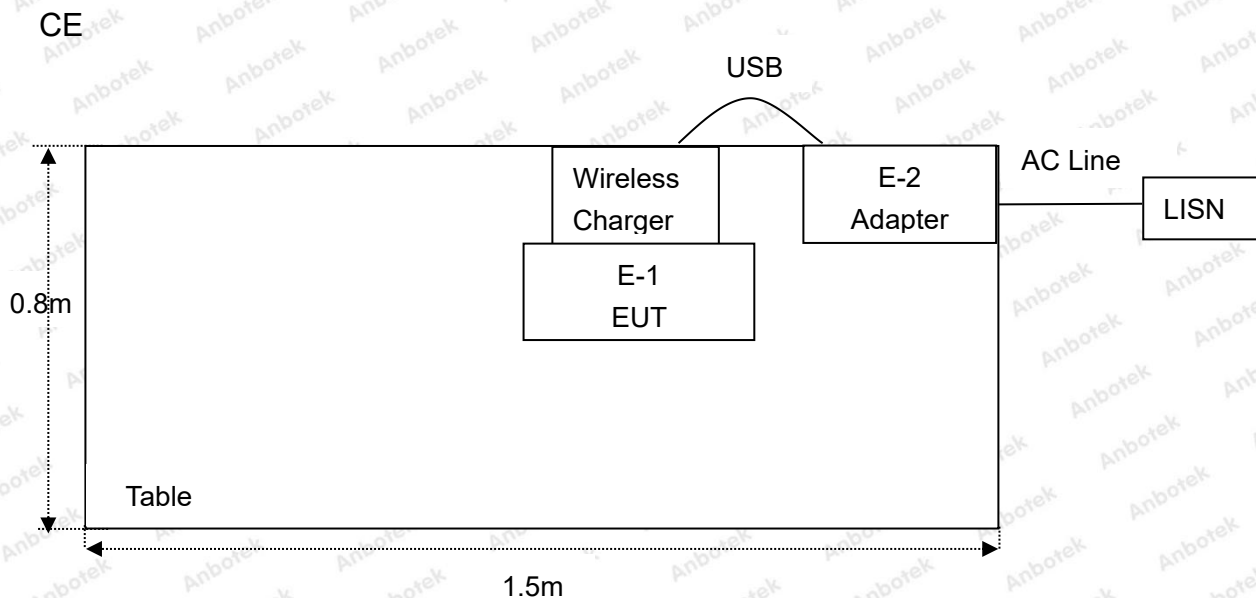
| For Conducted Emission |                        |
|------------------------|------------------------|
| Final Test Mode        | Description            |
| Mode 1                 | Wireless Charging Mode |

| For Radiated Emission |                        |
|-----------------------|------------------------|
| Final Test Mode       | Description            |
| Mode 1                | Wireless Charging Mode |

Note: (1)Test channel is 0.1198MHz.

(2) All the situation(full load, half load and empty load) has been tested,only the worst situation (full load 2W) was recorded in the report.

## 1.5. Description Of Test Setup



## 1.6. Test Equipment List

| Item | Equipment                                   | Manufacturer               | Model No.        | Serial No.    | Last Cal.     | Cal. Interval |
|------|---|----------------------------|------------------|---------------|---------------|---------------|
| 1.   | L.I.S.N.<br>Artificial Mains<br>Network     | Rohde & Schwarz            | ENV216           | 100055        | Oct. 26, 2020 | 1 Year        |
| 2.   | EMI Test Receiver                           | Rohde & Schwarz            | ESCI             | 100627        | Oct. 26, 2020 | 1 Year        |
| 3.   | EMI Test Receiver                           | Rohde & Schwarz            | ESR26            | 101481        | Oct. 26, 2020 | 1 Year        |
| 4.   | RF Switching Unit                           | Compliance<br>Direction    | RSU-M2           | 38303         | Oct. 26, 2020 | 1 Year        |
| 5.   | MAX Spectrum<br>Analysis                    | Agilent                    | N9020A           | MY51170037    | Oct. 26, 2020 | 1 Year        |
| 6.   | Preamplifier                                | SKET Electronic            | BK1G18G30<br>D   | KD17503       | Oct. 26, 2020 | 1 Year        |
| 7.   | Double Ridged Horn<br>Antenna               | Instruments<br>corporation | GTH-0118         | 351600        | Nov. 02, 2020 | 2 Year        |
| 8.   | Bilog Broadband<br>Antenna                  | Schwarzbeck                | VULB9163         | VULB 9163-289 | Nov. 02, 2020 | 2 Year        |
| 9.   | Loop Antenna                                | Schwarzbeck                | FMZB1519B        | 00053         | Nov. 02, 2020 | 2 Year        |
| 10.  | Horn Antenna                                | A-INFO                     | LB-180400-K<br>F | J211060628    | Nov. 02, 2020 | 2 Year        |
| 11.  | Pre-amplifier                               | SONOMA                     | 310N             | 186860        | Oct. 26, 2020 | 1 Year        |
| 12.  | EMI Test Software<br>EZ-EMC                 | SHURPLE                    | N/A              | N/A           | N/A           | N/A           |
| 13.  | RF Test Control<br>System                   | YIHENG                     | YH3000           | 2017430       | Oct. 26, 2020 | 1 Year        |
| 14.  | Power Sensor                                | DAER                       | RPR3006W         | 15100041SN045 | Oct. 26, 2020 | 1 Year        |
| 15.  | Power Sensor                                | DAER                       | RPR3006W         | 15100041SN046 | Oct. 26, 2020 | 1 Year        |
| 16.  | MXA Spectrum<br>Analysis                    | Agilent                    | N9020A           | MY51170037    | Oct. 26, 2020 | 1 Year        |
| 17.  | MXG RF Vector<br>Signal Generator           | Agilent                    | N5182A           | MY48180656    | Oct. 26, 2020 | 1 Year        |
| 18.  | Signal Generator                            | Agilent                    | E4421B           | MY41000743    | Oct. 26, 2020 | 1 Year        |
| 19.  | DC Power Supply                             | IVYTECH                    | IV3605           | 1804D360510   | Oct. 26, 2020 | 1 Year        |
| 20.  | Constant<br>Temperature<br>Humidity Chamber | ZHONGJIAN                  | ZJ-KHWS80<br>B   | N/A           | Oct. 26, 2020 | 1 Year        |

### 1.7. Measurement Uncertainty

|                        |   |                          |
|------------------------|---|--------------------------|
| Radiation Uncertainty  | : | Ur = 3.9 dB (Horizontal) |
|                        |   | Ur = 3.8 dB (Vertical)   |
| Conduction Uncertainty | : | Uc = 3.4 dB              |

### 1.8. Description of Test Facility

The test facility is recognized, certified, or accredited by the following organizations:

#### FCC-Registration No.: 184111

Shenzhen Anbotek Compliance Laboratory Limited, EMC Laboratory has been registered and fully described in a report filed with the (FCC) Federal Communications Commission. The acceptance letter from the FCC is maintained in our files. Registration No. 184111, September 30, 2020.

#### ISED-Registration No.: 8058A

Shenzhen Anbotek Compliance Laboratory Limited, EMC Laboratory has been registered and fully described in a report filed with the (ISED) Innovation, Science and Economic Development Canada. The acceptance letter from the ISED is maintained in our files. Registration 8058A, September 30, 2020.

#### Test Location

Shenzhen Anbotek Compliance Laboratory Limited.

1/F, Building D, Sogood Science and Technology Park, Sanwei community, Hangcheng Street, Bao'an District, Shenzhen, Guangdong, China.518102



## 2. Summary of Test Results

| Standard Section                    | Test Item               | Result |
|-------------------------------------|-------------------------|--------|
| FCC Part 15, Paragraph 15.207       | Conducted Emission Test | PASS   |
| FCC Part 15, Paragraph 15.209(a)(f) | Spurious Emission       | PASS   |
| Part 15.203                         | Antenna Requirement     | PASS   |

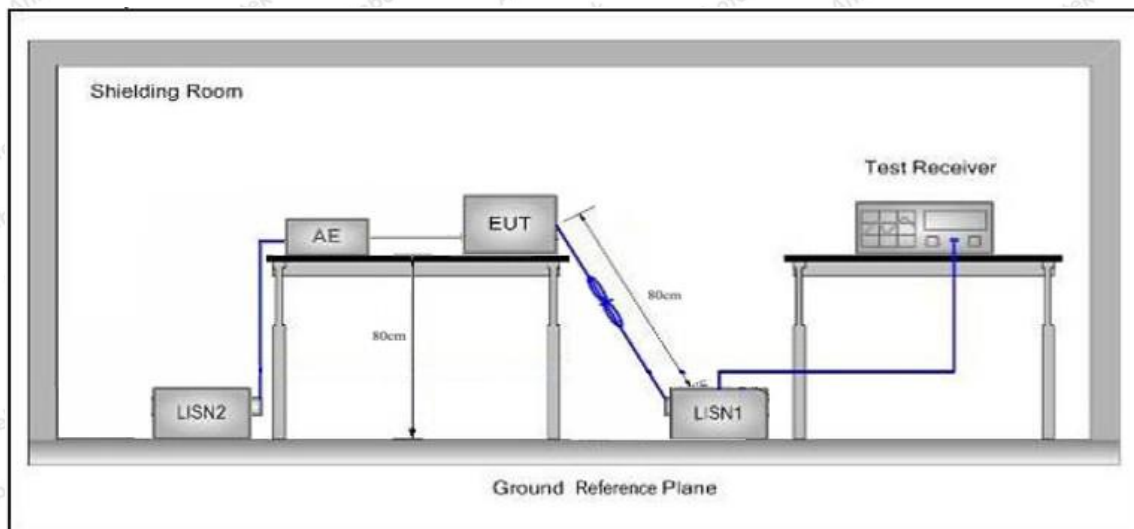
## 3. Conducted Emission Test

### 3.1. Test Standard and Limit

| Test Standard | FCC Part15 Section 15.207 |                                |               |
|---------------|---------------------------|--------------------------------|---------------|
| Test Limit    | Frequency                 | Maximum RF Line Voltage (dBuV) |               |
|               |                           | Quasi-peak Level               | Average Level |
|               | 150kHz~500kHz             | 66 ~ 56 *                      | 56 ~ 46 *     |
|               | 500kHz~5MHz               | 56                             | 46            |
| 5MHz~30MHz    | 60                        | 50                             |               |

**Remark:** (1) \*Decreasing linearly with logarithm of the frequency.  
 (2) The lower limit shall apply at the transition frequency.

### 3.2. Test Setup



### 3.3. Test Procedure

The EUT system is connected to the power mains through a line impedance stabilization network (L.I.S.N.). This provides a 50ohm coupling impedance for the EUT system. Please refer the block diagram of the test setup and photographs. Both sides of AC line are checked to find out the maximum conducted emission. In order to find the maximum emission levels, the relative positions of equipment and all of the interface cables shall be changed according to FCC ANSI C63.10-2013 on Conducted Emission Measurement.

The bandwidth of test receiver (ESCI) set at 9kHz.

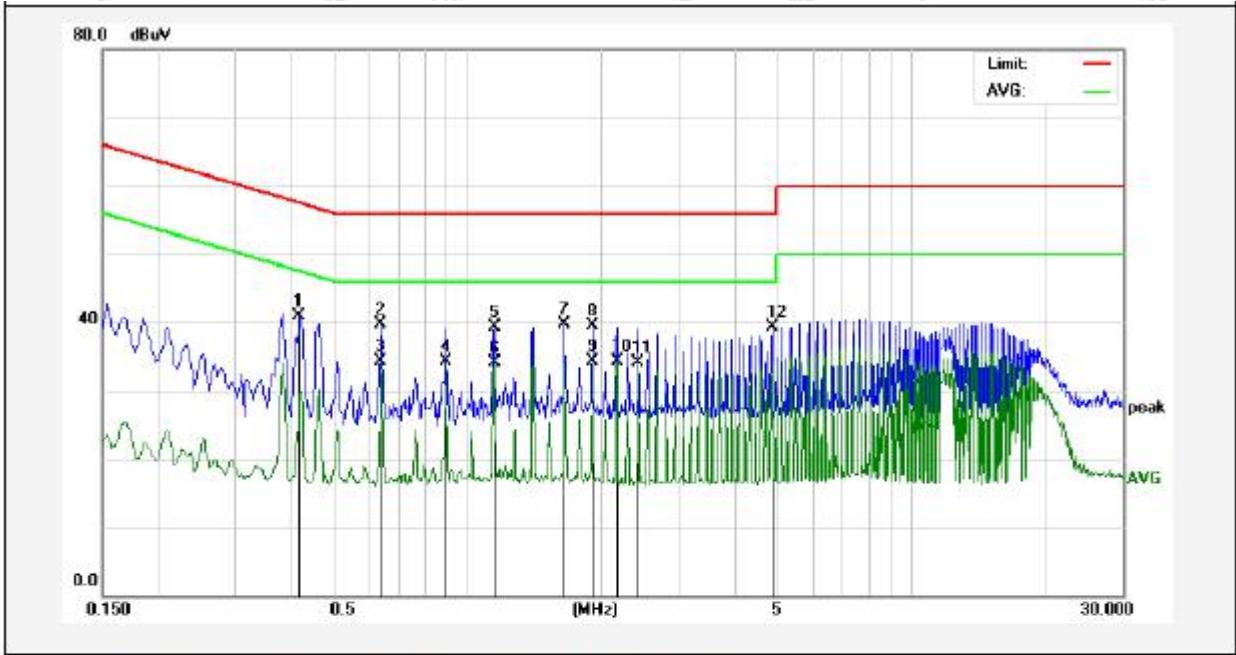
The frequency range from 150kHz to 30MHz is checked.

### 3.4. Test Data

Please to see the following pages

### Conducted Emission Test Data

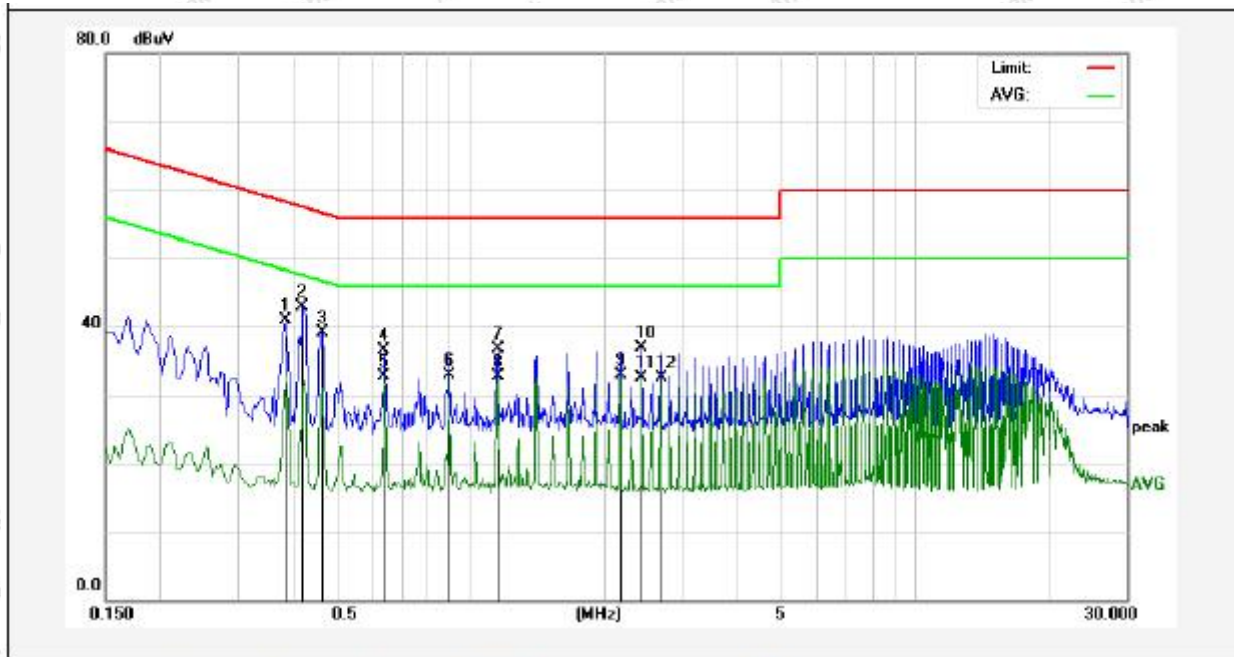
Test Site: 1# Shielded Room  
 Operating Condition: Mode 1  
 Test Specification: AC 120V, 60Hz for adapter  
 Comment: Live Line  
 Tem.: 22.3°C Hum.: 50%



| No. | Freq. (MHz) | Reading (dBUV) | Factor (dB) | Result (dBUV) | Limit (dBUV) | Over Limit (dB) | Detector | Remark |
|-----|-------------|----------------|-------------|---------------|--------------|-----------------|----------|--------|
| 1   | 0.4180      | 20.98          | 19.94       | 40.92         | 57.49        | -16.57          | QP       |        |
| 2   | 0.6380      | 19.73          | 20.02       | 39.75         | 56.00        | -16.25          | QP       |        |
| 3   | 0.6380      | 14.23          | 20.02       | 34.25         | 46.00        | -11.75          | AVG      |        |
| 4   | 0.8940      | 14.23          | 20.09       | 34.32         | 46.00        | -11.68          | AVG      |        |
| 5   | 1.1500      | 19.27          | 20.12       | 39.39         | 56.00        | -16.61          | QP       |        |
| 6   | 1.1500      | 14.04          | 20.12       | 34.16         | 46.00        | -11.84          | AVG      |        |
| 7   | 1.6580      | 19.52          | 20.13       | 39.65         | 56.00        | -16.35          | QP       |        |
| 8   | 1.9140      | 19.35          | 20.14       | 39.49         | 56.00        | -16.51          | QP       |        |
| 9   | 1.9140      | 14.24          | 20.14       | 34.38         | 46.00        | -11.62          | AVG      |        |
| 10  | 2.1700      | 14.12          | 20.14       | 34.26         | 46.00        | -11.74          | AVG      |        |
| 11  | 2.4260      | 13.87          | 20.15       | 34.02         | 46.00        | -11.98          | AVG      |        |
| 12  | 4.8500      | 19.09          | 20.20       | 39.29         | 56.00        | -16.71          | QP       |        |

### Conducted Emission Test Data

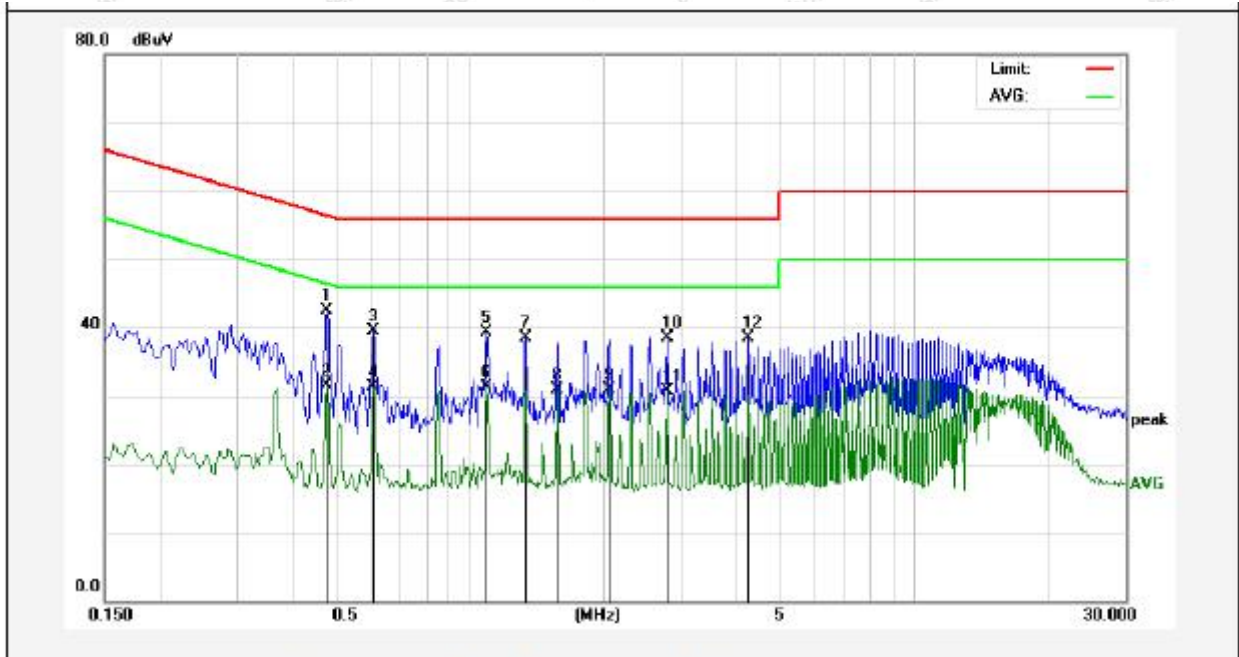
Test Site: 1# Shielded Room  
 Operating Condition: Mode 1  
 Test Specification: AC 120V, 60Hz for adapter  
 Comment: Neutral Line  
 Tem.: 22.3°C Hum.: 50%



| No. | Freq. (MHz) | Reading (dBuV) | Factor (dB) | Result (dBuV) | Limit (dBuV) | Over Limit (dB) | Detector | Remark |
|-----|-------------|----------------|-------------|---------------|--------------|-----------------|----------|--------|
| 1   | 0.3820      | 20.98          | 19.93       | 40.91         | 58.23        | -17.32          | QP       |        |
| 2   | 0.4180      | 22.99          | 19.94       | 42.93         | 57.49        | -14.56          | QP       |        |
| 3   | 0.4620      | 19.23          | 19.96       | 39.19         | 56.66        | -17.47          | QP       |        |
| 4   | 0.6380      | 16.54          | 20.02       | 36.56         | 56.00        | -19.44          | QP       |        |
| 5   | 0.6380      | 12.68          | 20.02       | 32.70         | 46.00        | -13.30          | AVG      |        |
| 6   | 0.8940      | 12.82          | 20.09       | 32.91         | 46.00        | -13.09          | AVG      |        |
| 7   | 1.1500      | 16.51          | 20.12       | 36.63         | 56.00        | -19.37          | QP       |        |
| 8   | 1.1500      | 12.57          | 20.12       | 32.69         | 46.00        | -13.31          | AVG      |        |
| 9   | 2.1700      | 12.70          | 20.14       | 32.84         | 46.00        | -13.16          | AVG      |        |
| 10  | 2.4260      | 16.67          | 20.15       | 36.82         | 56.00        | -19.18          | QP       |        |
| 11  | 2.4260      | 12.41          | 20.15       | 32.56         | 46.00        | -13.44          | AVG      |        |
| 12  | 2.6820      | 12.31          | 20.15       | 32.46         | 46.00        | -13.54          | AVG      |        |

### Conducted Emission Test Data

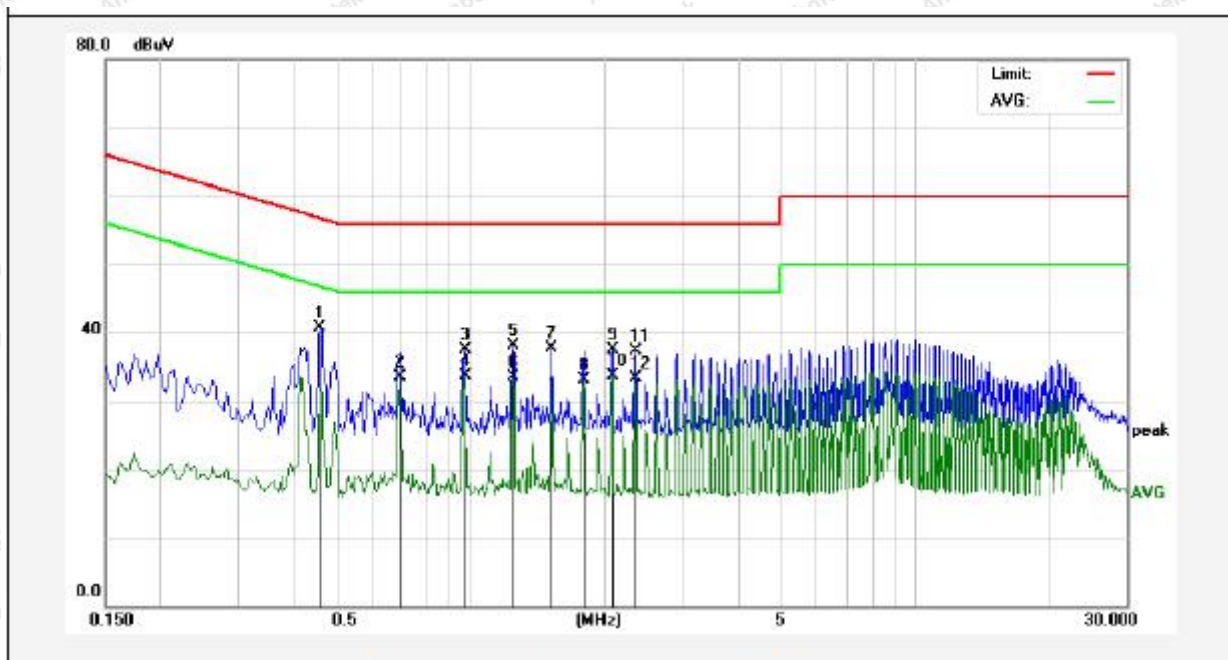
Test Site: 1# Shielded Room  
 Operating Condition: Mode 1  
 Test Specification: AC 240V, 60Hz for adapter  
 Comment: Live Line  
 Tem.: 22.3°C Hum.: 50%



| No. | Freq. (MHz) | Reading (dBuV) | Factor (dB) | Result (dBuV) | Limit (dBuV) | Over Limit (dB) | Detector | Remark |
|-----|-------------|----------------|-------------|---------------|--------------|-----------------|----------|--------|
| 1   | 0.4779      | 22.46          | 19.97       | 42.43         | 56.38        | -13.95          | QP       |        |
| 2   | 0.4779      | 11.52          | 19.97       | 31.49         | 46.38        | -14.89          | AVG      |        |
| 3   | 0.6059      | 19.50          | 20.01       | 39.51         | 56.00        | -16.49          | QP       |        |
| 4   | 0.6059      | 11.29          | 20.01       | 31.30         | 46.00        | -14.70          | AVG      |        |
| 5   | 1.0900      | 19.09          | 20.12       | 39.21         | 56.00        | -16.79          | QP       |        |
| 6   | 1.0900      | 11.13          | 20.12       | 31.25         | 46.00        | -14.75          | AVG      |        |
| 7   | 1.3380      | 18.41          | 20.13       | 38.54         | 56.00        | -17.46          | QP       |        |
| 8   | 1.5740      | 10.81          | 20.13       | 30.94         | 46.00        | -15.06          | AVG      |        |
| 9   | 2.0579      | 10.73          | 20.14       | 30.87         | 46.00        | -15.13          | AVG      |        |
| 10  | 2.7900      | 18.42          | 20.16       | 38.58         | 56.00        | -17.42          | QP       |        |
| 11  | 2.7900      | 10.64          | 20.16       | 30.80         | 46.00        | -15.20          | AVG      |        |
| 12  | 4.2458      | 18.30          | 20.19       | 38.49         | 56.00        | -17.51          | QP       |        |

### Conducted Emission Test Data

Test Site: 1# Shielded Room  
 Operating Condition: Mode 1  
 Test Specification: AC 240V, 60Hz for adapter  
 Comment: Neutral Line  
 Tem.: 22.3°C Hum.: 50%



| No. | Freq. (MHz) | Reading (dBuV) | Factor (dB) | Result (dBuV) | Limit (dBuV) | Over Limit (dB) | Detector | Remark |
|-----|-------------|----------------|-------------|---------------|--------------|-----------------|----------|--------|
| 1   | 0.4580      | 20.80          | 19.96       | 40.76         | 56.73        | -15.97          | QP       |        |
| 2   | 0.6939      | 13.48          | 20.04       | 33.52         | 46.00        | -12.48          | AVG      |        |
| 3   | 0.9699      | 17.43          | 20.11       | 37.54         | 56.00        | -18.46          | QP       |        |
| 4   | 0.9699      | 13.68          | 20.11       | 33.79         | 46.00        | -12.21          | AVG      |        |
| 5   | 1.2459      | 17.99          | 20.12       | 38.11         | 56.00        | -17.89          | QP       |        |
| 6   | 1.2459      | 13.45          | 20.12       | 33.57         | 46.00        | -12.43          | AVG      |        |
| 7   | 1.5180      | 17.55          | 20.13       | 37.68         | 56.00        | -18.32          | QP       |        |
| 8   | 1.8020      | 13.06          | 20.14       | 33.20         | 46.00        | -12.80          | AVG      |        |
| 9   | 2.0779      | 17.32          | 20.14       | 37.46         | 56.00        | -18.54          | QP       |        |
| 10  | 2.0779      | 13.48          | 20.14       | 33.62         | 46.00        | -12.38          | AVG      |        |
| 11  | 2.3540      | 17.15          | 20.15       | 37.30         | 56.00        | -18.70          | QP       |        |
| 12  | 2.3540      | 13.14          | 20.15       | 33.29         | 46.00        | -12.71          | AVG      |        |

## 4. Radiation Spurious Emission and Band Edge

### 4.1. Test Standard and Limit

| Test Standard | FCC Part15 C Section 15.209 and 15.205 |                                  |                |            |                          |
|---------------|--|----------------------------------|----------------|------------|--------------------------|
| Test Limit    | Frequency (MHz)                        | Field strength (microvolt/meter) | Limit (dBuV/m) | Remark     | Measurement distance (m) |
|               | 0.009MHz~0.490MHz                      | 2400/F(kHz)                      | -              | -          | 300                      |
|               | 0.490MHz-1.705MHz                      | 24000/F(kHz)                     | -              | -          | 30                       |
|               | 1.705MHz-30MHz                         | 30                               | -              | -          | 30                       |
|               | 30MHz~88MHz                            | 100                              | 40.0           | Quasi-peak | 3                        |
|               | 88MHz~216MHz                           | 150                              | 43.5           | Quasi-peak | 3                        |
|               | 216MHz~960MHz                          | 200                              | 46.0           | Quasi-peak | 3                        |
|               | Above 1000MHz                          | 500                              | 54.0           | Average    | 3                        |
|               |  |                                  | 74.0           | Peak       | 3                        |

**Remark:**

(1)The lower limit shall apply at the transition frequency.

(2) 15.35(b), Unless otherwise specified, the limit on peak radio frequency emissions is 20dB above the maximum permitted average emission limit applicable to the equipment under test. This peak limit applies to the total peak emission level radiated by the device.

### 4.2. Test Setup

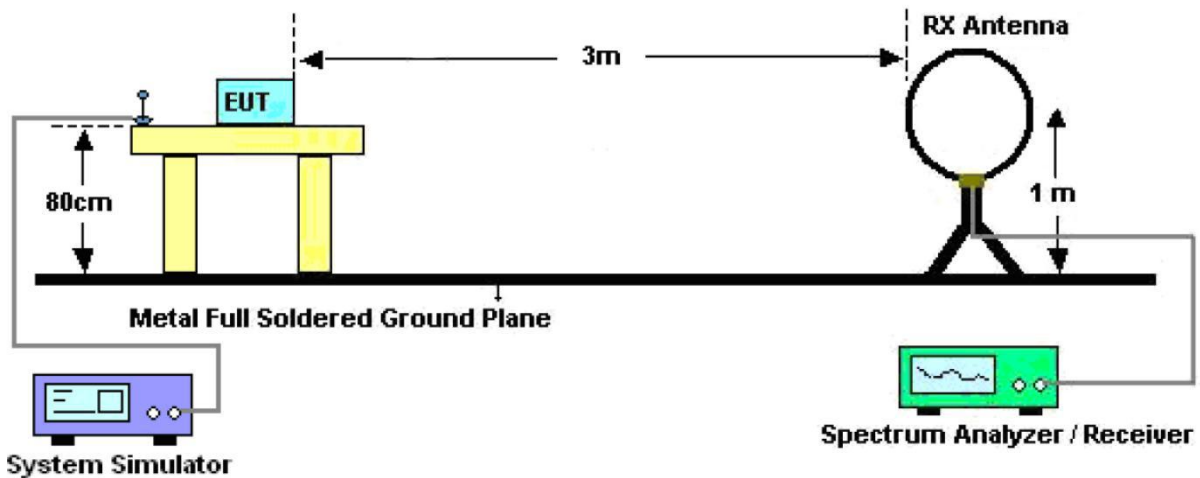


Figure 1. Below 30MHz

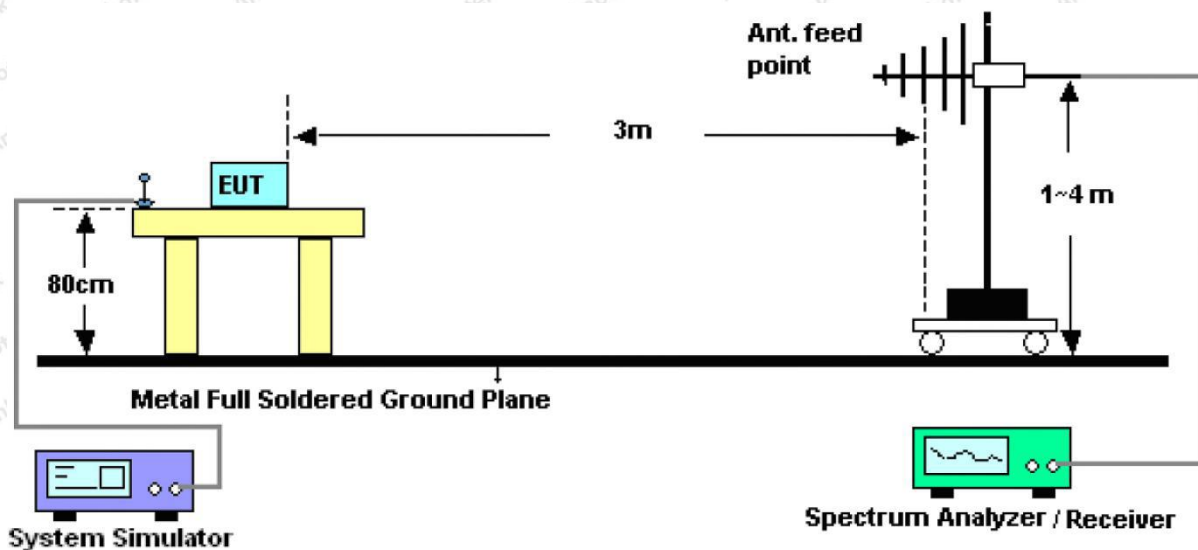


Figure 2. 30MHz to 1GHz

### 4.3. Test Procedure

For below 1GHz: The EUT is placed on a turntable, which is 0.8m above the ground plane.

The turn table can rotate 360 degrees to determine the position of the maximum emission level. The EUT is set 3 meters away from the receiving antenna which is mounted on an antenna tower. The antenna can be moved up and down from 1 to 4 meters to find out the maximum emission level. Rotated the EUT through three orthogonal axes to determine the maximum emissions, both horizontal and vertical polarization of the antenna are set on test. The EUT is tested in 9\*6\*6 Chamber. The device is evaluated in xyz orientation.

For 9kHz to 150kHz, Set the spectrum analyzer as:

RBW = 200Hz, VBW = 1kHz, Detector = Quasi-Peak, Trace mode = Max hold, Sweep = auto couple.

For 150kHz to 30MHz, Set the spectrum analyzer as:

RBW = 9kHz, VBW = 30kHz, Detector = Quasi-Peak, Trace mode = Max hold, Sweep = auto couple.

For 30MHz to 1000MHz, Set the spectrum analyzer as:

RBW = 100kHz, VBW = 300kHz, Detector = Quasi-Peak, Trace mode = Max hold, Sweep = auto couple.

### 4.4. Test Data

**PASS**

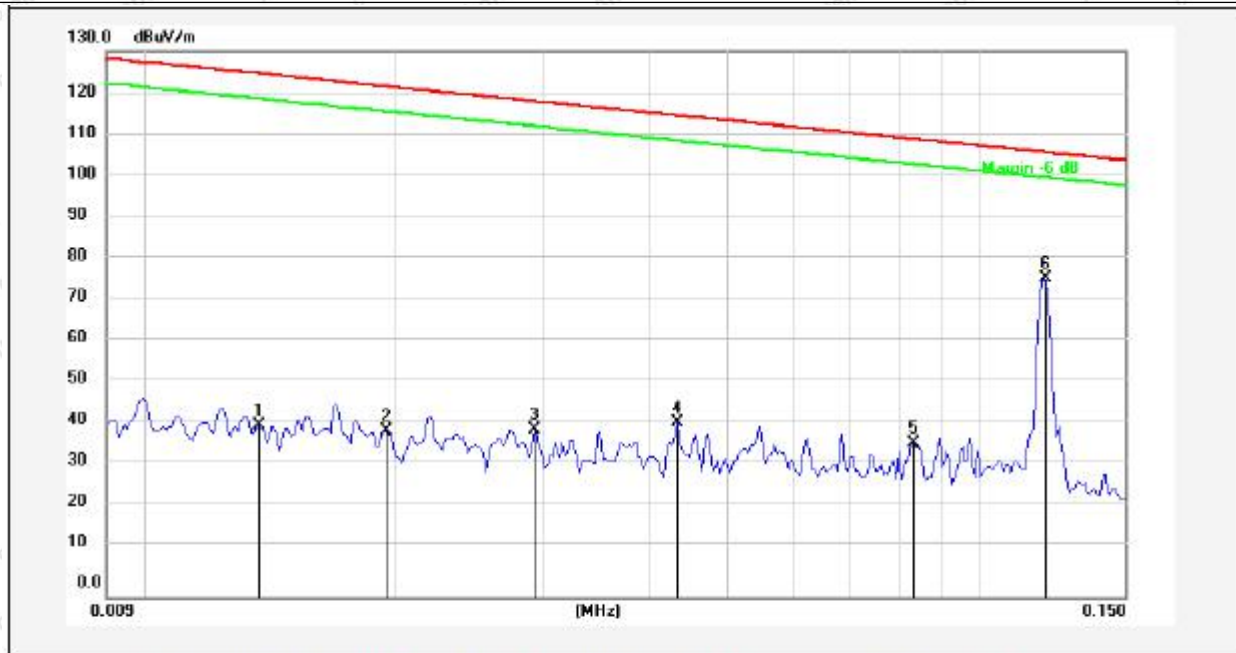
Note: The data is in TX mode, and this is the worst mode.



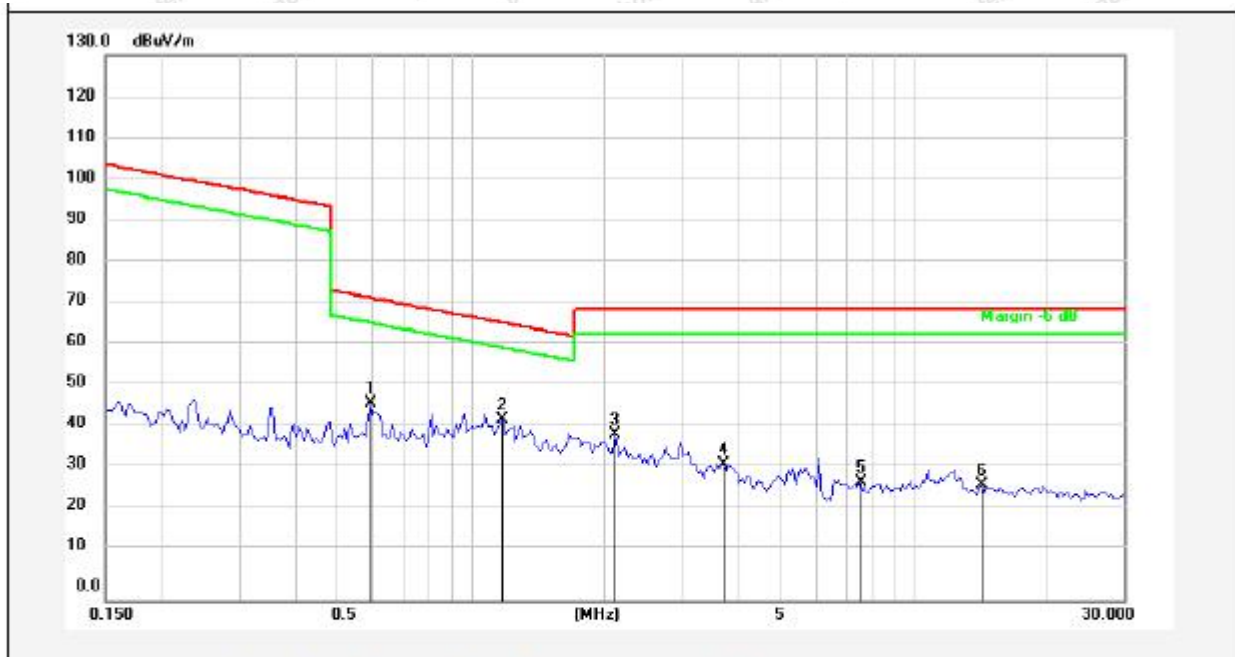
## Test Results

(Between 9KHz – 30MHz)

**Standard:** FCC PART15 C\_3m      **Power Source:** AC 120V, 60Hz for adapter  
**Test item:** Radiation Test      **Temp.(C)/Hum.(%RH):** 22.1°C/50%RH  
**Test Mode:** Mode 1      **Distance:** 3m



| No. | Freq. (MHz) | Reading (dBuV) | Factor () | Result (dBuV/m) | Limit (dBuV/m) | Over Limit (dB) | Detector | Height (cm) | degree (deg) | Remark |
|-----|-------------|----------------|-----------|-----------------|----------------|-----------------|----------|-------------|--------------|--------|
| 1   | 0.0137      | 20.51          | 20.17     | 40.68           | 124.68         | -84.00          | AV       |             |              |        |
| 2   | 0.0194      | 19.32          | 20.30     | 39.62           | 121.68         | -82.06          | AV       |             |              |        |
| 3   | 0.0293      | 19.34          | 20.46     | 39.80           | 118.12         | -78.32          | AV       |             |              |        |
| 4   | 0.0434      | 20.99          | 20.45     | 41.44           | 114.72         | -73.28          | AV       |             |              |        |
| 5   | 0.0834      | 16.20          | 20.37     | 36.57           | 109.09         | -72.52          | AV       |             |              |        |
| 6   | 0.1198      | 55.61          | 20.34     | 75.95           | 105.96         | -30.01          | AV       |             |              |        |

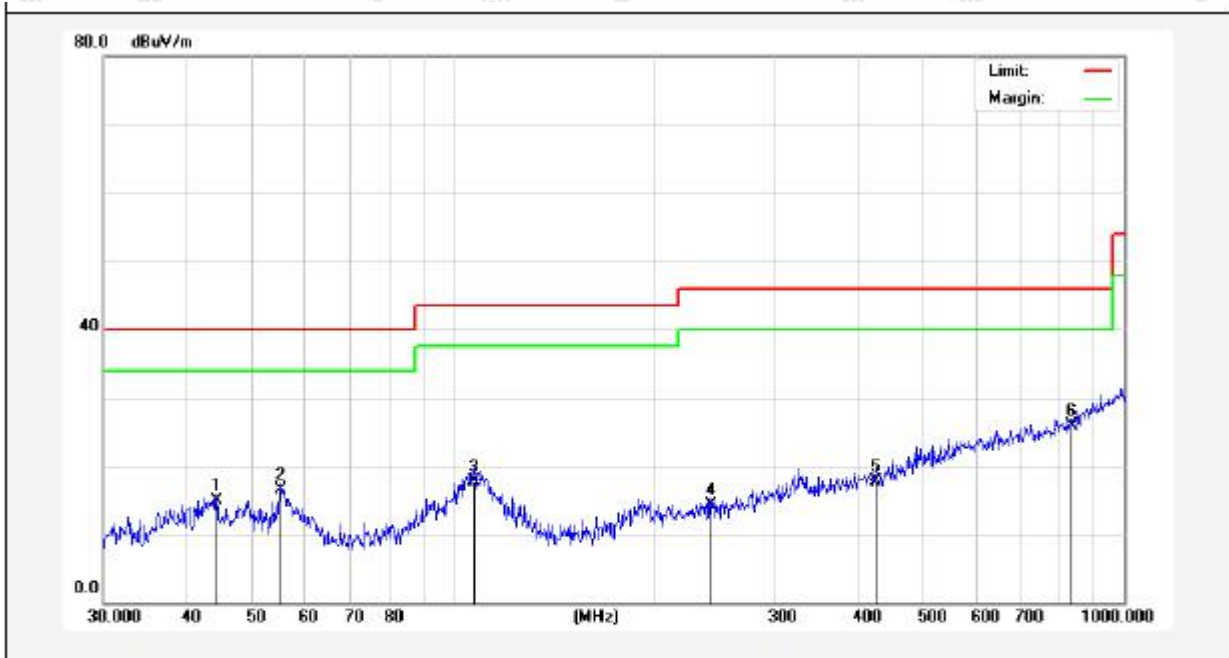


| No. | Freq. (MHz) | Reading (dBuV) | Factor ( ) | Result (dBuV/m) | Limit (dBuV/m) | Over Limit (dB) | Detector | Height (cm) | degree (deg) | Remark |
|-----|-------------|----------------|------------|-----------------|----------------|-----------------|----------|-------------|--------------|--------|
| 1   | 0.5947      | 26.79          | 20.27      | 47.06           | 72.12          | -25.06          | QP       |             |              |        |
| 2   | 1.1842      | 22.68          | 20.26      | 42.94           | 66.16          | -23.22          | QP       |             |              |        |
| 3   | 2.1213      | 19.11          | 20.28      | 39.39           | 69.50          | -30.11          | QP       |             |              |        |
| 4   | 3.7494      | 12.02          | 20.35      | 32.37           | 69.50          | -37.13          | QP       |             |              |        |
| 5   | 7.5658      | 7.57           | 20.48      | 28.05           | 69.50          | -41.45          | QP       |             |              |        |
| 6   | 14.2881     | 6.86           | 20.54      | 27.40           | 69.50          | -42.10          | QP       |             |              |        |

**Remark:** According to FCC PART 15.209 (d), the emission limits for the frequency bands 9–90 kHz, 110–490 kHz and above 1000 MHz, Radiated emission limits in these three bands are based on measurements employing an average detector.

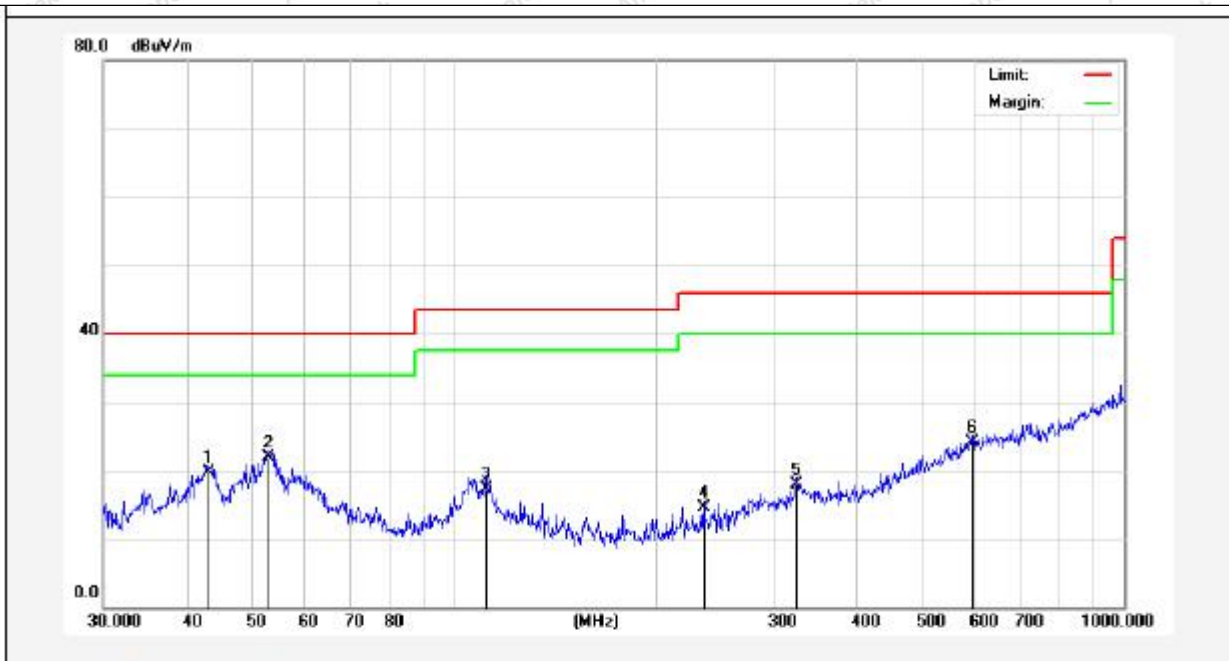
(Between 30MHz –1000 MHz)

|                   |                         |                            |                                  |
|-------------------|-------------------------|----------------------------|----------------------------------|
| <b>Standard:</b>  | <b>FCC PART15 C _3m</b> | <b>Polarization:</b>       | <b>Horizontal</b>                |
| <b>Test item:</b> | <b>Radiation Test</b>   | <b>Power Source:</b>       | <b>AC 120V, 60Hz for adapter</b> |
| <b>Test Mode:</b> | <b>Mode 1</b>           | <b>Temp.(C)/Hum.(%RH):</b> | <b>21.2°C/52%RH</b>              |
| <b>Distance:</b>  | <b>3m</b>               |                            |                                  |



| No. | Freq. (MHz) | Reading (dBuV) | Factor (dB/m) | Result (dBuV/m) | Limit (dBuV/m) | Over Limit (dB) | Detector | Height (cm) | degree (deg) | Remark |
|-----|-------------|----------------|---------------|-----------------|----------------|-----------------|----------|-------------|--------------|--------|
| 1   | 44.2752     | 29.32          | -14.37        | 14.95           | 40.00          | -25.05          | QP       | 100         | 360          |        |
| 2   | 55.2207     | 33.08          | -16.51        | 16.57           | 40.00          | -23.43          | QP       | 100         | 0            |        |
| 3   | 107.1337    | 38.41          | -20.71        | 17.70           | 43.50          | -25.80          | QP       | 100         | 0            |        |
| 4   | 241.6763    | 33.32          | -19.01        | 14.31           | 46.00          | -31.69          | QP       | 100         | 360          |        |
| 5   | 425.0280    | 30.22          | -12.51        | 17.71           | 46.00          | -28.29          | QP       | 100         | 0            |        |
| 6   | 833.3171    | 29.34          | -3.50         | 25.84           | 46.00          | -20.16          | QP       | 100         | 360          |        |

|                   |                         |                            |                                  |
|-------------------|-------------------------|----------------------------|----------------------------------|
| <b>Standard:</b>  | <b>FCC PART15 C _3m</b> | <b>Polarization:</b>       | <b>Vertical</b>                  |
| <b>Test item:</b> | <b>Radiation Test</b>   | <b>Power Source:</b>       | <b>AC 120V, 60Hz for adapter</b> |
| <b>Test Mode:</b> | <b>Mode 1</b>           | <b>Temp.(C)/Hum.(%RH):</b> | <b>21.2°C/52%RH</b>              |
| <b>Distance:</b>  | <b>3m</b>               |                            |                                  |



| No. | Freq. (MHz) | Reading (dBuV) | Factor (dB/m) | Result (dBuV/m) | Limit (dBuV/m) | Over Limit (dB) | Detector | Height (cm) | degree (deg) | Remark |
|-----|-------------|----------------|---------------|-----------------|----------------|-----------------|----------|-------------|--------------|--------|
| 1   | 43.0505     | 33.60          | -13.90        | 19.70           | 40.00          | -20.30          | QP       | 100         | 360          |        |
| 2   | 52.9453     | 37.73          | -15.83        | 21.90           | 40.00          | -18.10          | QP       | 100         | 0            |        |
| 3   | 111.7380    | 33.85          | -16.52        | 17.33           | 43.50          | -26.17          | QP       | 100         | 0            |        |
| 4   | 235.8164    | 30.37          | -15.82        | 14.55           | 46.00          | -31.45          | QP       | 100         | 360          |        |
| 5   | 324.4561    | 30.65          | -12.71        | 17.94           | 46.00          | -28.06          | QP       | 100         | 0            |        |
| 6   | 593.0497    | 31.04          | -6.91         | 24.13           | 46.00          | -21.87          | QP       | 100         | 360          |        |

## 5. Antenna Requirement

### 5.1. Test Standard and Requirement

|               |  |
|---------------|--|
| Test Standard | FCC Part15 Section 15.203  |
| Requirement   | An intentional radiator shall be designed to ensure that no antenna other than that furnished by the responsible party shall be used with the device. The use of a permanently attached antenna or of an antenna that uses a unique coupling to the intentional radiator, the manufacturer may design the unit so that a broken antenna can be replaced by the user, but the use of a standard antenna jack or electrical connector is prohibited. |

### 5.2. Antenna Connected Construction

The antenna is a Inductive loop coil Antenna which permanently attached, and the best case gain of the antenna is 0 dBi. It complies with the standard requirement.

**APPENDIX I -- TEST SETUP PHOTOGRAPH**

Photo of Power Line Conducted Emission Test



Photo of Radiation Emission Test



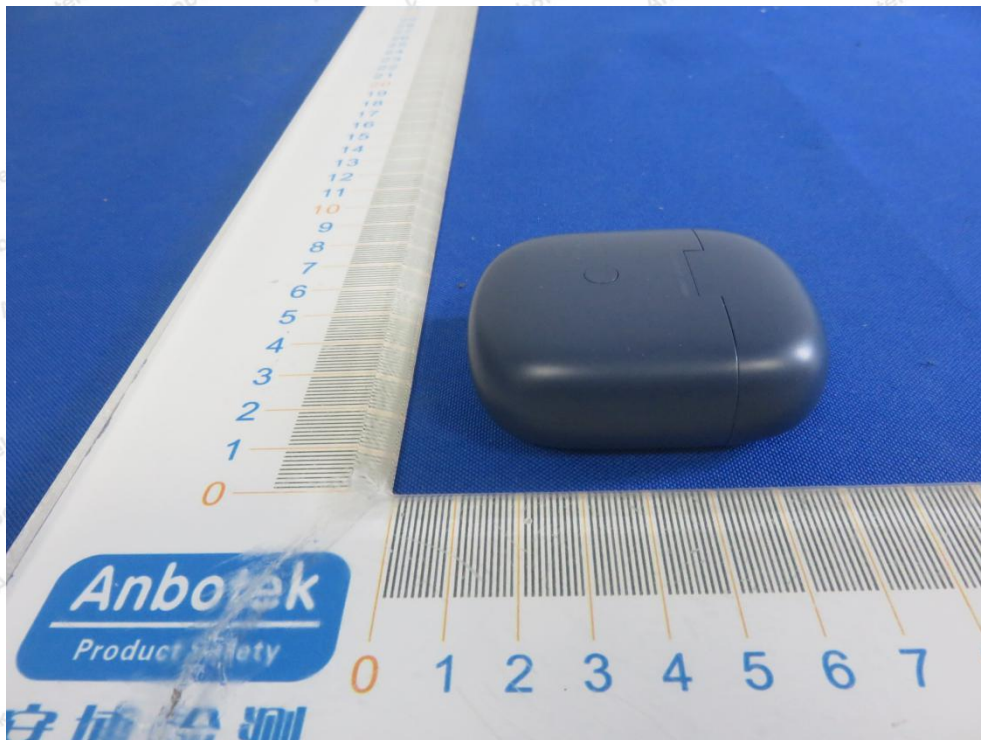
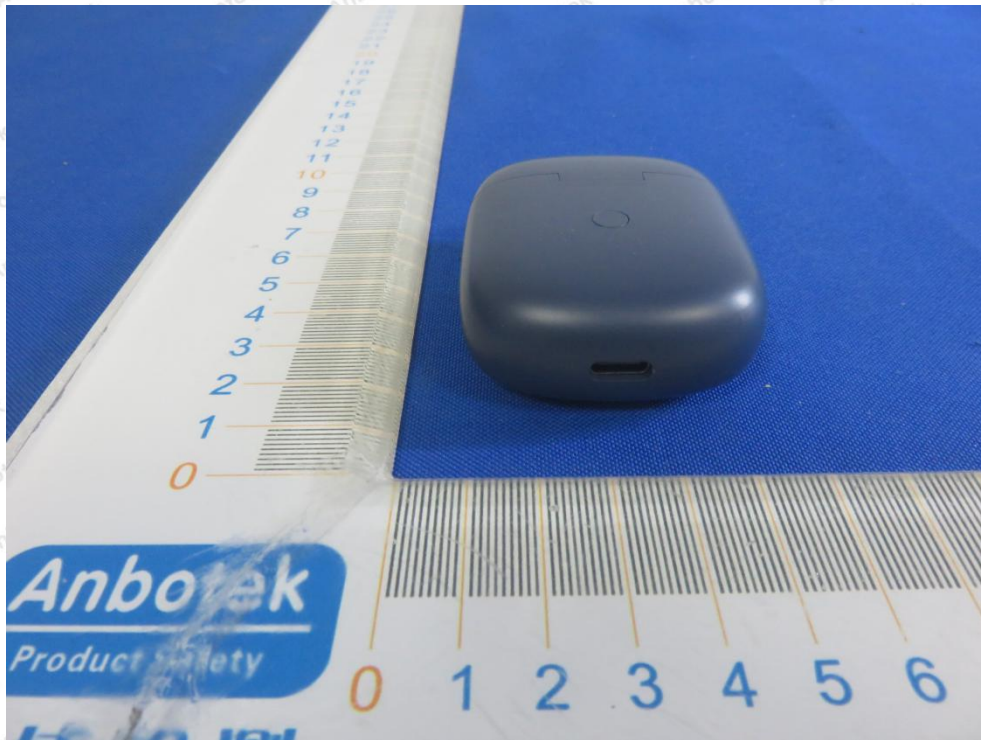


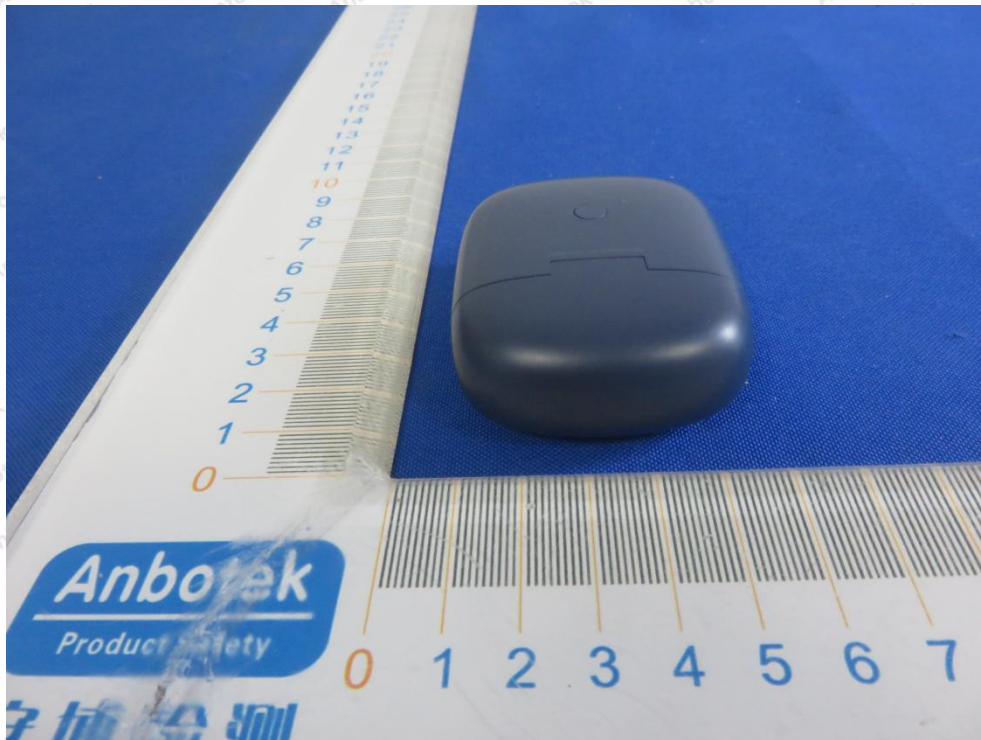
## APPENDIX II -- EXTERNAL PHOTOGRAPH



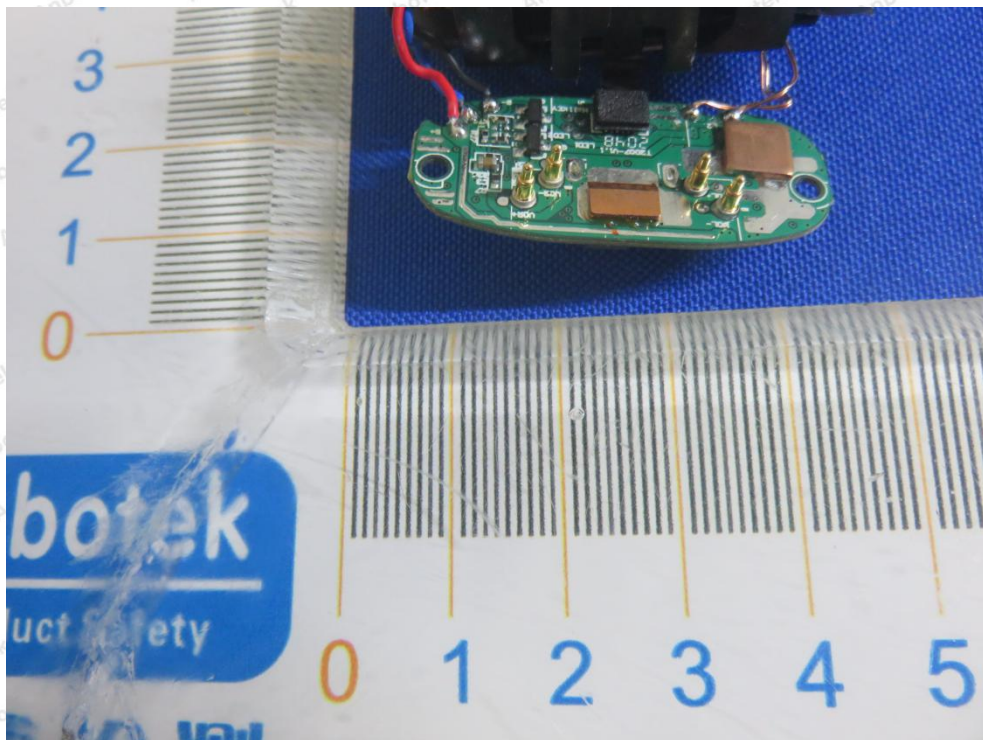


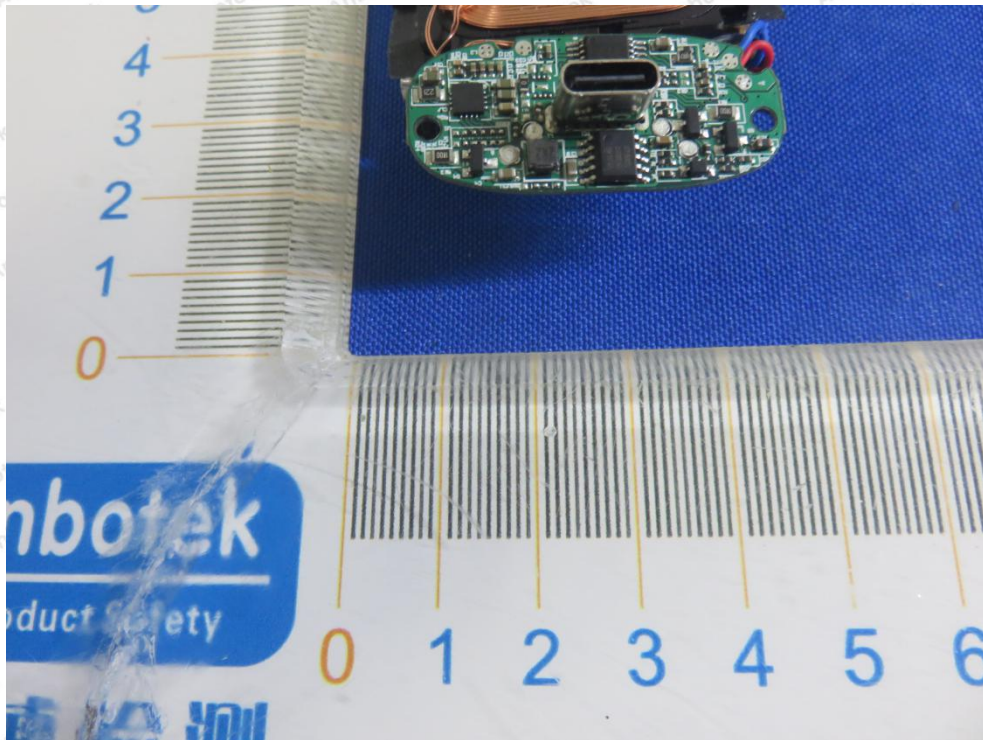




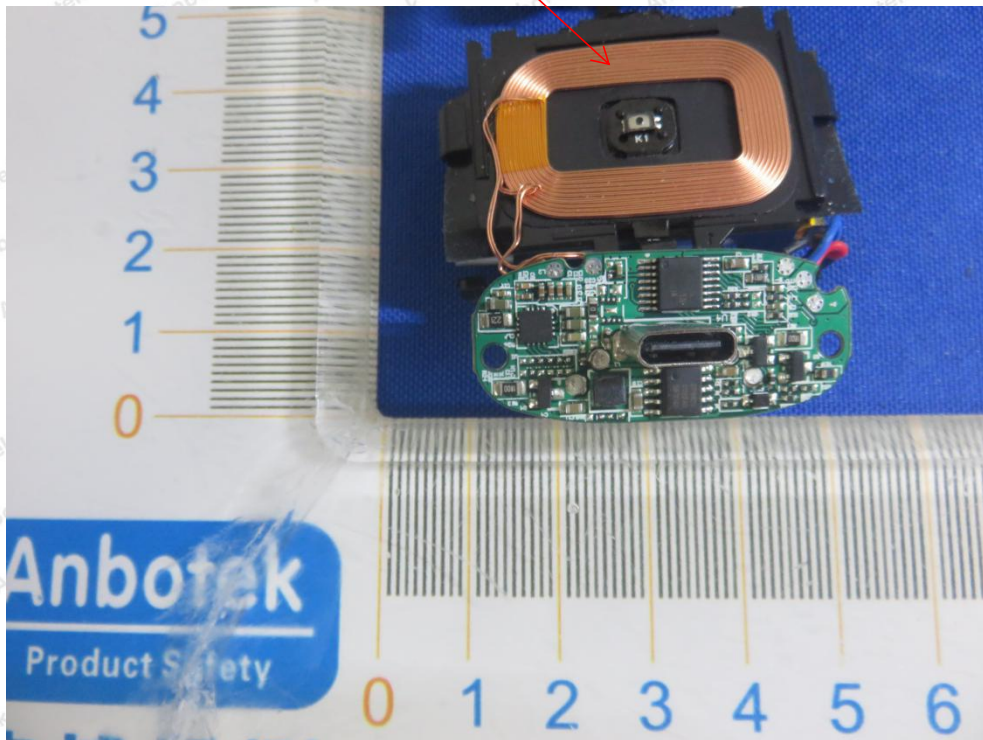


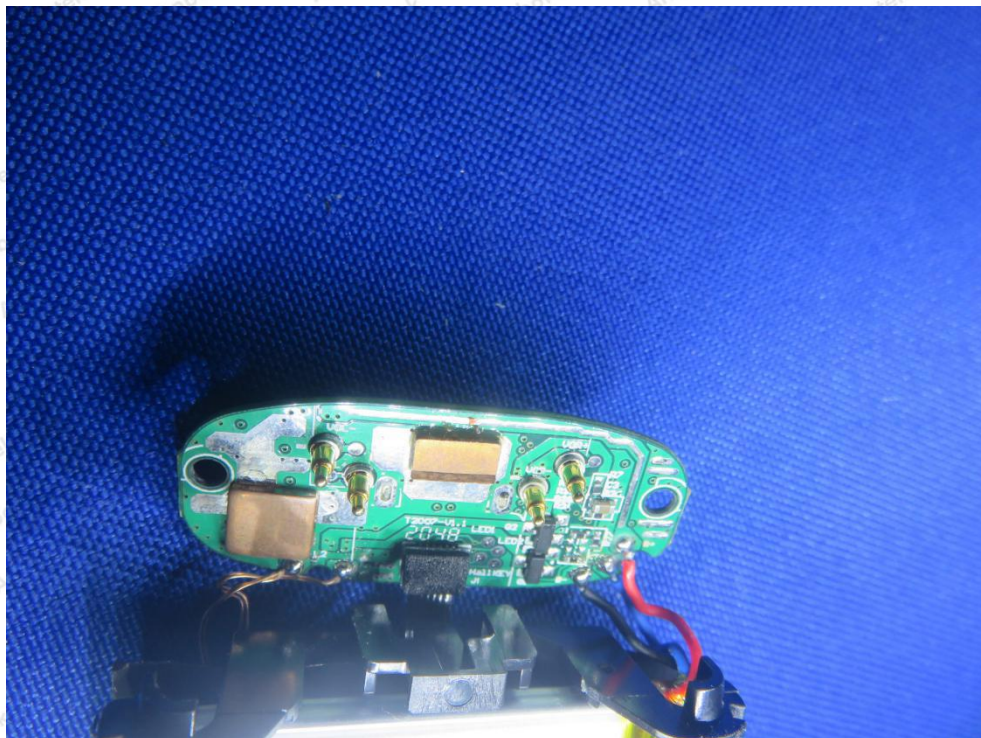
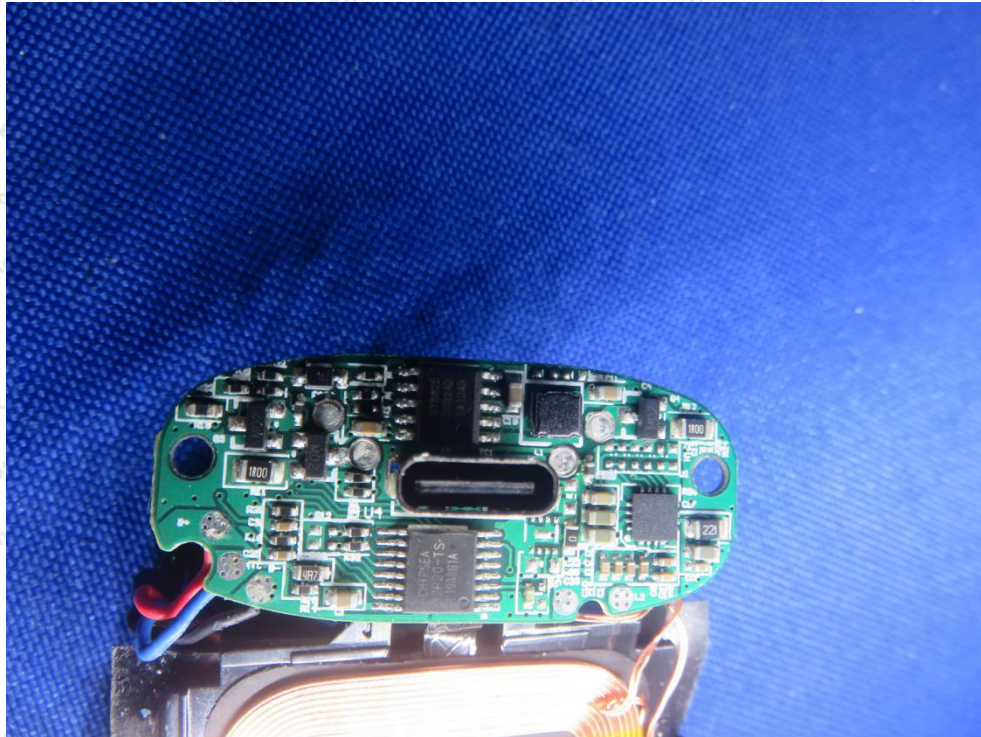
## APPENDIX III -- INTERNAL PHOTOGRAPH





ANT







----- End of Report -----