

品名：RFFPA260700NNAB001

1. Explanation of part number :

RF	FPA	2607	00	N	N	A	B	0	01
Type Code	Product Code	PCB Dimension (Unit: mm)	Cable Length (unit: cm)	Connector Brand	Type of Connector	Application	Project status	Wire Diameter	Project
RF Device	FPC Antenna	Per 2 digits of length, width e.g.: 2924 Length 29.6mm, Width 24.7mm	2 digits for cable length e.g.: 00 Cable None	A: N C:MCX D:IPEX III E: IPEX IV F: IPEX A13 H: Hirose I: IPEX M: MMCX S: SMA T: TNC U:MURATA N: None	A: Reverse Female B: Reverse Male F: Female M: Male N: None	0: 0GHz 3: 3GHz 5: 5GHz 6: 6GHz A: 2.4GHz ISM band B: GSM 900/1800 dual band G: GPS band L: 2.4/5.2/5.8 GHz tri-band N: NFC T: LTE band W: WCDMA band	B: MP T:During Test X: Pile Run	0:None 1:∅ 0.81 2:∅ 1.32 3:∅ 1.13 4:Low Loss ∅ 1.13 5:∅ 0.5 6:RG316 7: ∅ 1.37 8:RG178 9:Low Loss ∅ 1.37	01~99 series number

2. Electrical Specification :

Item	Specification
Working Frequency Range	2.4~2.5 GHz
Return Loss	-10 dB(Max)
Gain(peak)	0.35 dBi
VSWR	2 max.
Impedance	50 Ohm Nominal
Radiation	Omni-directional
Polarization	Linear Vertical
Operation Temperature	-20°C ~ +65°C

UNLESS OTHER SPECIFIED TOLERANCES ON :
 X = N/A X.X = N/A X.XX = N/A
 ANGLES = N/A HOLEDIA = N/A



INPAQ TECHNOLOGY CO., LTD.

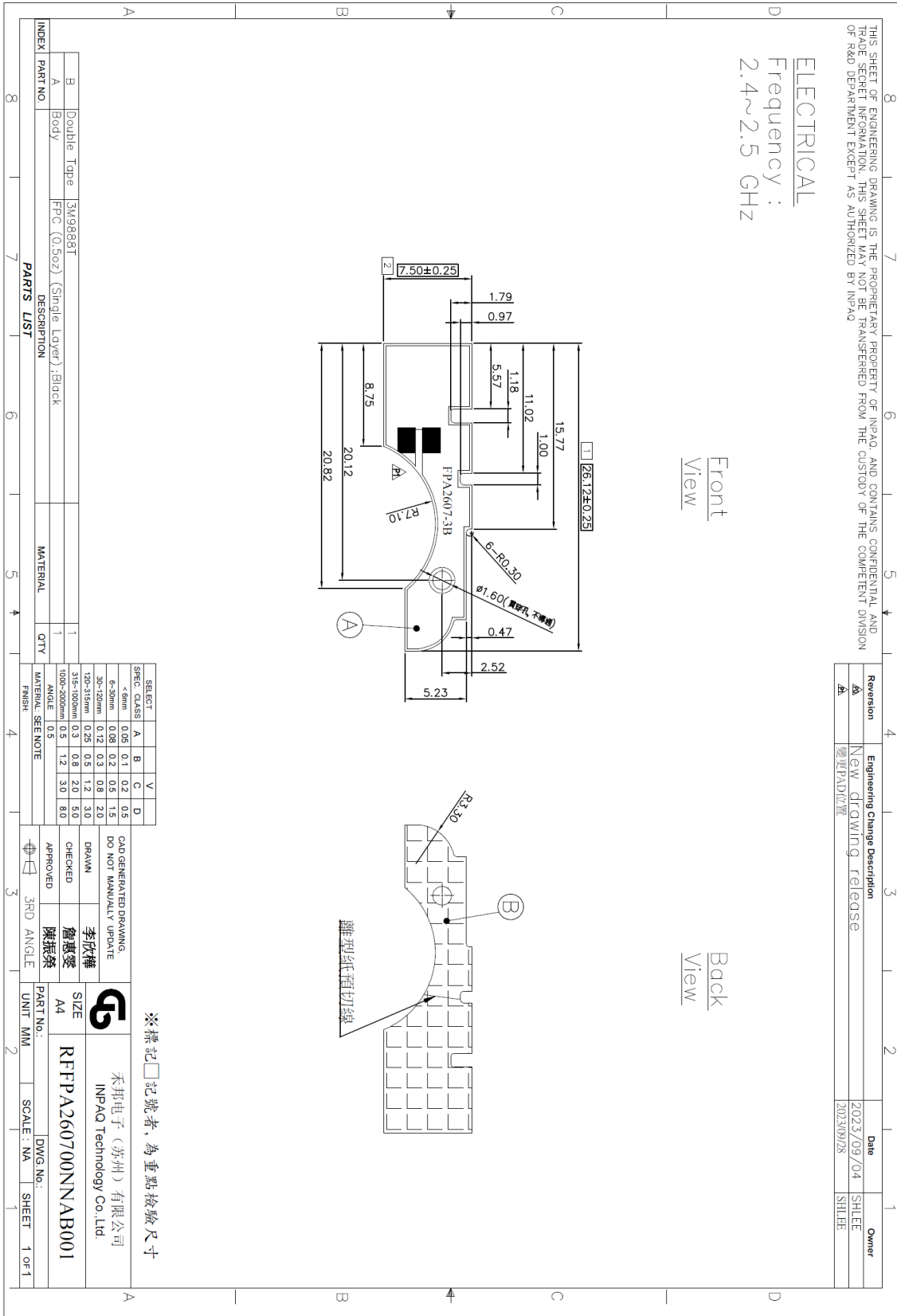
SCALE : N/A UNIT : mm
 DRAWN BY : 李欣樺 CHECKED BY : 詹惠雯
 DESIGNED BY : 黃瑞郎 APPROVED BY : 陳振榮

THIS DRAWINGS AND SPECIFICATIONS ARE THE PROPERTY OF INPAQ TECHNOLOGY CO.,LTD.AND SHALL NOT BE REPRODUCED OR USED AS THE BASIS FOR THE MANUFACTURE OR SALE OF APPARATUS OR DEVICES WITHOUT PERMISSION

TITLE : RFFPA260700NNAB001

DOCUMENT NO. SPEC REV. P1

3. Antenna Drawing :

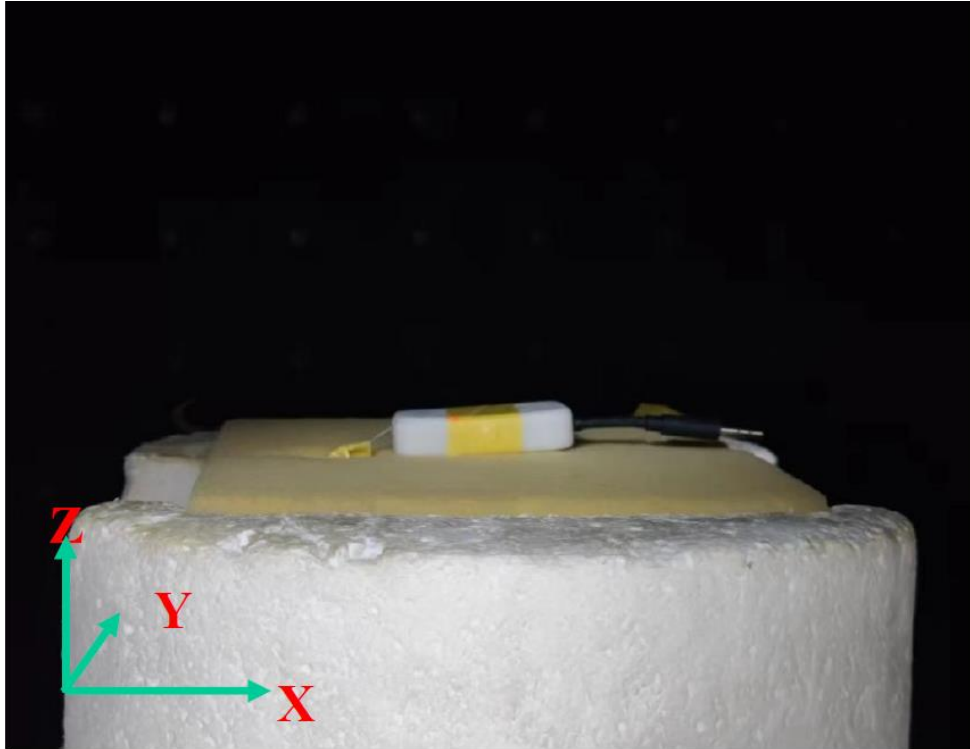



UNLESS OTHER SPECIFIED TOLERANCES ON :		INPAQ TECHNOLOGY CO., LTD.
X=N/A X.X=N/A X.XX=N/A	ANGLES=N/A HOLEDIA=N/A	
SCALE : N/A	UNIT : mm	THIS DRAWINGS AND SPECIFICATIONS ARE THE PROPERTY OF INPAQ TECHNOLOGY CO.,LTD.AND SHALL NOT BE REPRODUCED OR USED AS THE BASIS FOR THE MANUFACTURE OR SALE OF APPARATUS OR DEVICES WITHOUT PERMISSION
DRAWN BY : 李欣樺	CHECKED BY : 詹惠愛	
DESIGNED BY : 黃瑞郎	APPROVED BY : 陳振榮	
TITLE : RFFPA260700NNAB001		DOCUMENT NO.
		SPEC REV. P1

4. Performance Report :

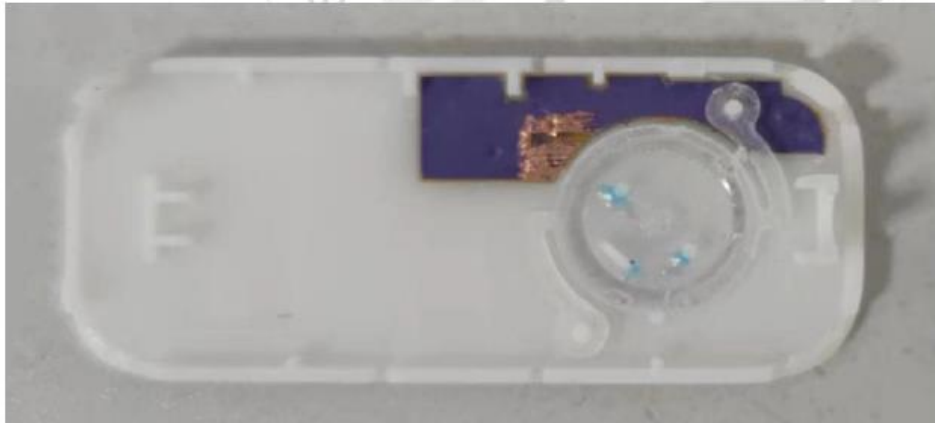
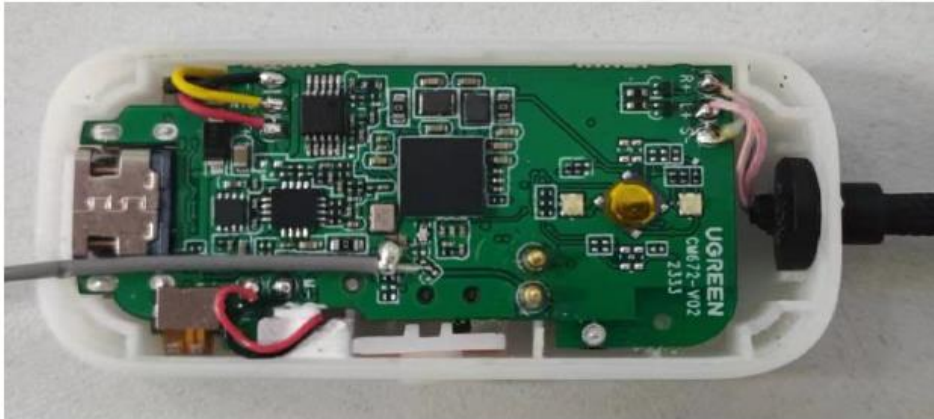
Test Report


■ **Experimental Setup**



UNLESS OTHER SPECIFIED TOLERANCES ON : X=N/A X.X=N/A X.XX=N/A ANGLES=N/A HOLEDIA=N/A		 INPAQ TECHNOLOGY CO., LTD.	THIS DRAWINGS AND SPECIFICATIONS ARE THE PROPERTY OF INPAQ TECHNOLOGY CO.,LTD.AND SHALL NOT BE REPRODUCED OR USED AS THE BASIS FOR THE MANUFACTURE OR SALE OF APPARATUS OR DEVICES WITHOUT PERMISSION
SCALE : N/A	UNIT : mm		
DRAWN BY : 李欣樺	CHECKED BY : 詹惠雯		SPEC REV. P1
DESIGNED BY : 黃瑞郎	APPROVED BY : 陳振榮		
TITLE : RFFPA260700NNAB001		DOCUMENT NO.	

Antenna Solution Detail

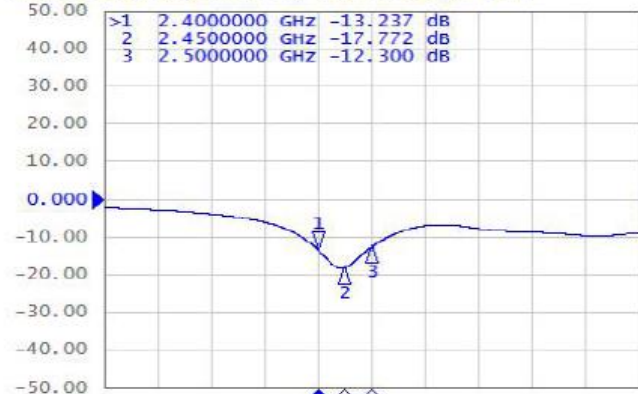


UNLESS OTHER SPECIFIED TOLERANCES ON : X=N/A X.X=N/A X.XX=N/A ANGLES=N/A HOLEDIA=N/A		 INPAQ TECHNOLOGY CO., LTD.	
SCALE : N/A	UNIT : mm		
DRAWN BY : 李欣樺	CHECKED BY : 詹惠雯	THIS DRAWINGS AND SPECIFICATIONS ARE THE PROPERTY OF INPAQ TECHNOLOGY CO.,LTD.AND SHALL NOT BE REPRODUCED OR USED AS THE BASIS FOR THE MANUFACTURE OR SALE OF APPARATUS OR DEVICES WITHOUT PERMISSION	
DESIGNED BY : 黃瑞郎	APPROVED BY : 陳振榮		
TITLE : RFFPA260700NNAB001		DOCUMENT NO.	SPEC REV. P1

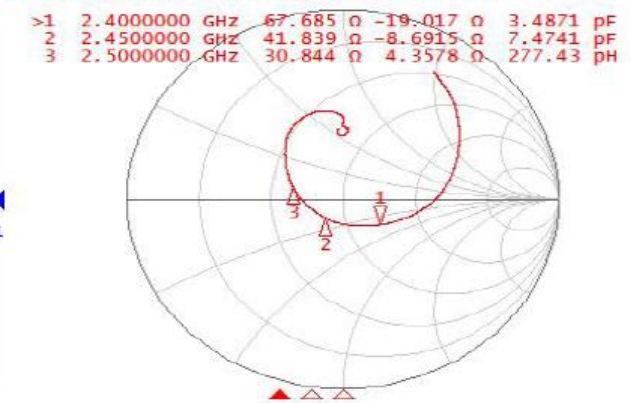
ELECTRICAL CHARACTERISTICS

S-Parameter

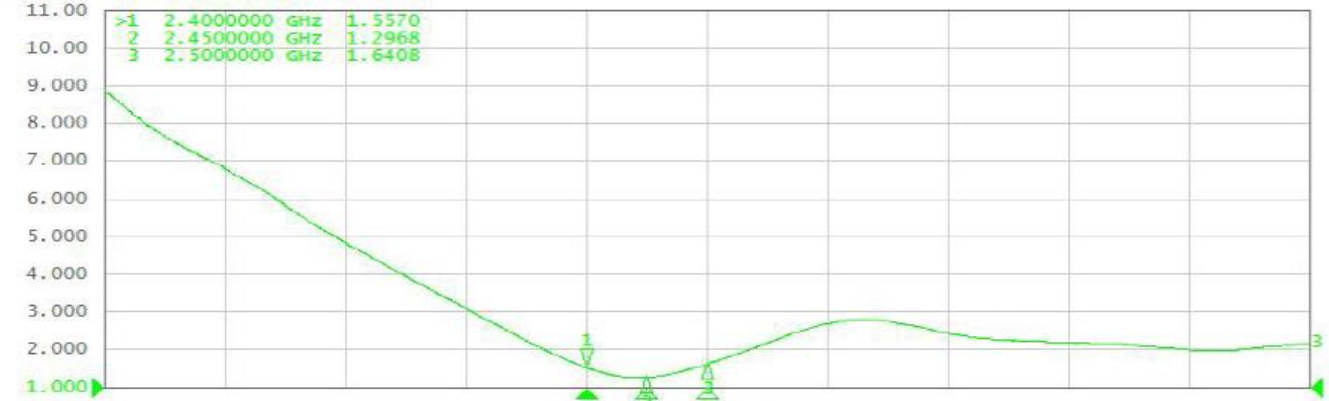
Tr1 S11 Log Mag 10.00 dB/ Ref 0.000 dB [F1]




Tr2 S11 Smith (R+jX) Scale 1.000 u [F1]



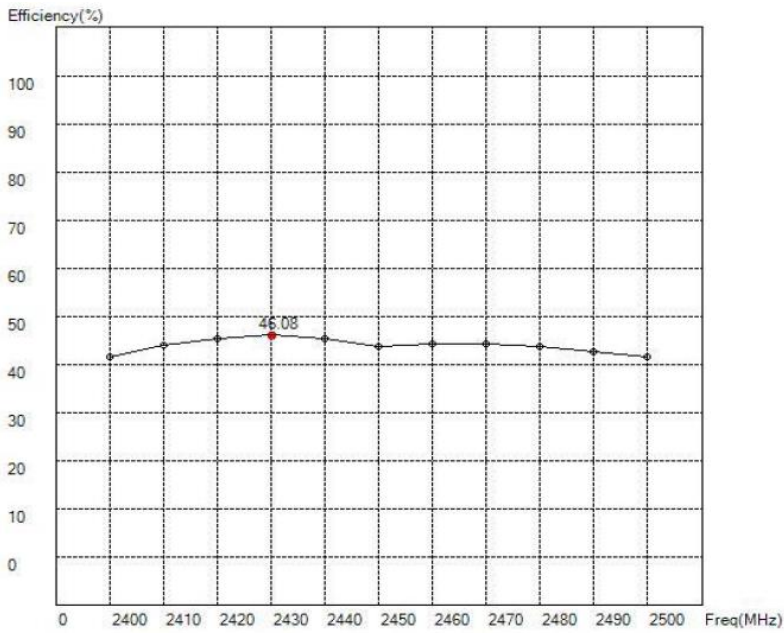
Tr3 S11 SWR 1.000 / Ref 1.000 [F1]



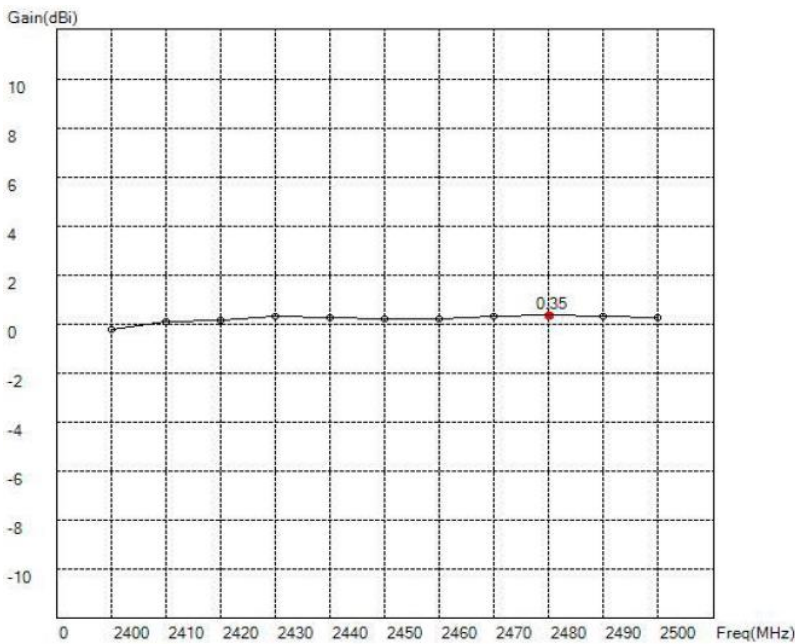
UNLESS OTHER SPECIFIED TOLERANCES ON : X=N/A X.X=N/A X.XX=N/A ANGLES=N/A HOLEDIA=N/A		 INPAQ TECHNOLOGY CO., LTD.	
SCALE : N/A	UNIT : mm		
DRAWN BY : 李欣樺	CHECKED BY : 詹惠雯	THIS DRAWINGS AND SPECIFICATIONS ARE THE PROPERTY OF INPAQ TECHNOLOGY CO.,LTD.AND SHALL NOT BE REPRODUCED OR USED AS THE BASIS FOR THE MANUFACTURE OR SALE OF APPARATUS OR DEVICES WITHOUT PERMISSION	
DESIGNED BY : 黃瑞郎	APPROVED BY : 陳振榮		
TITLE : RFFPA260700NNAB001		DOCUMENT NO.	SPEC REV. P1

Antenna Efficiency & Peak Gain


2.4~2.5 GHz



Maximum Efficiency at 2430 MHz : 46.08 %



Maximum Peak Gain at 2480MHz : 0.35dBi

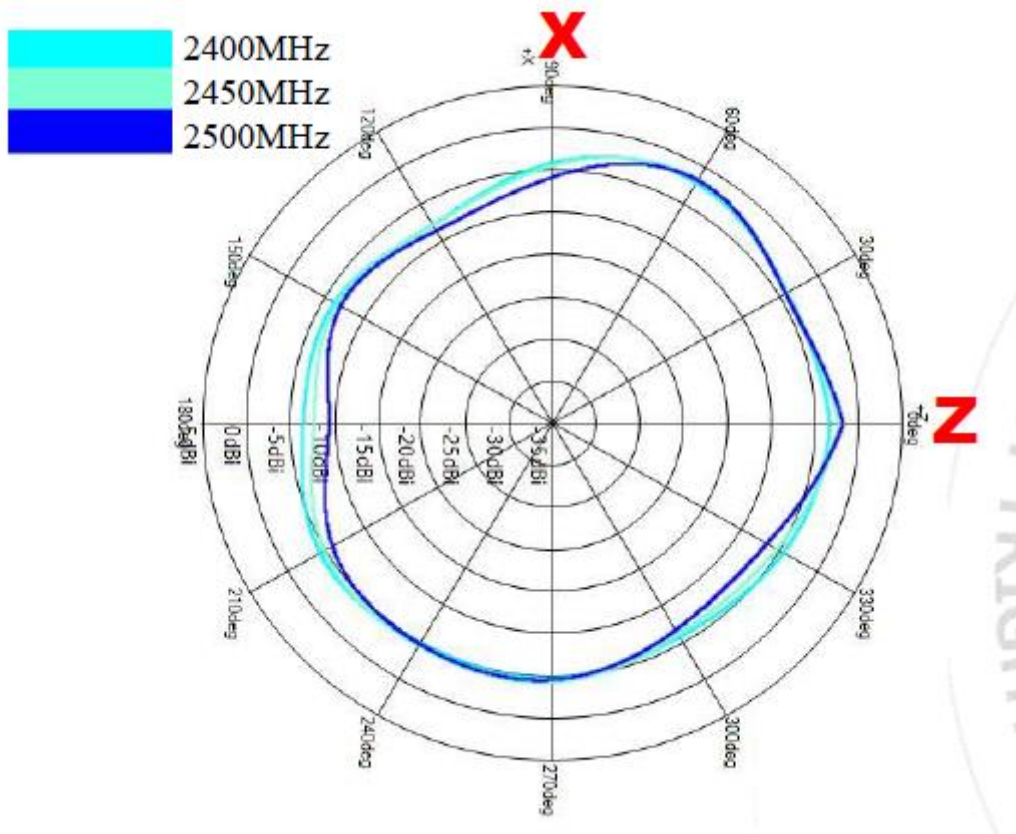
UNLESS OTHER SPECIFIED TOLERANCES ON : X=N/A X.X=N/A X.XX=N/A ANGLES=N/A HOLEDIA=N/A		 INPAQ TECHNOLOGY CO., LTD.
SCALE : N/A	UNIT : mm	
DRAWN BY : 李欣樺	CHECKED BY : 詹惠雯	THIS DRAWINGS AND SPECIFICATIONS ARE THE PROPERTY OF INPAQ TECHNOLOGY CO.,LTD.AND SHALL NOT BE REPRODUCED OR USED AS THE BASIS FOR THE MANUFACTURE OR SALE OF APPARATUS OR DEVICES WITHOUT PERMISSION
DESIGNED BY : 黃瑞郎	APPROVED BY : 陳振榮	
TITLE : RFFPA260700NNAB001		DOCUMENT NO.
		SPEC REV. P1


Radiation Patterns

X-Z Plane

Phi=0.00deg

Gain . dB

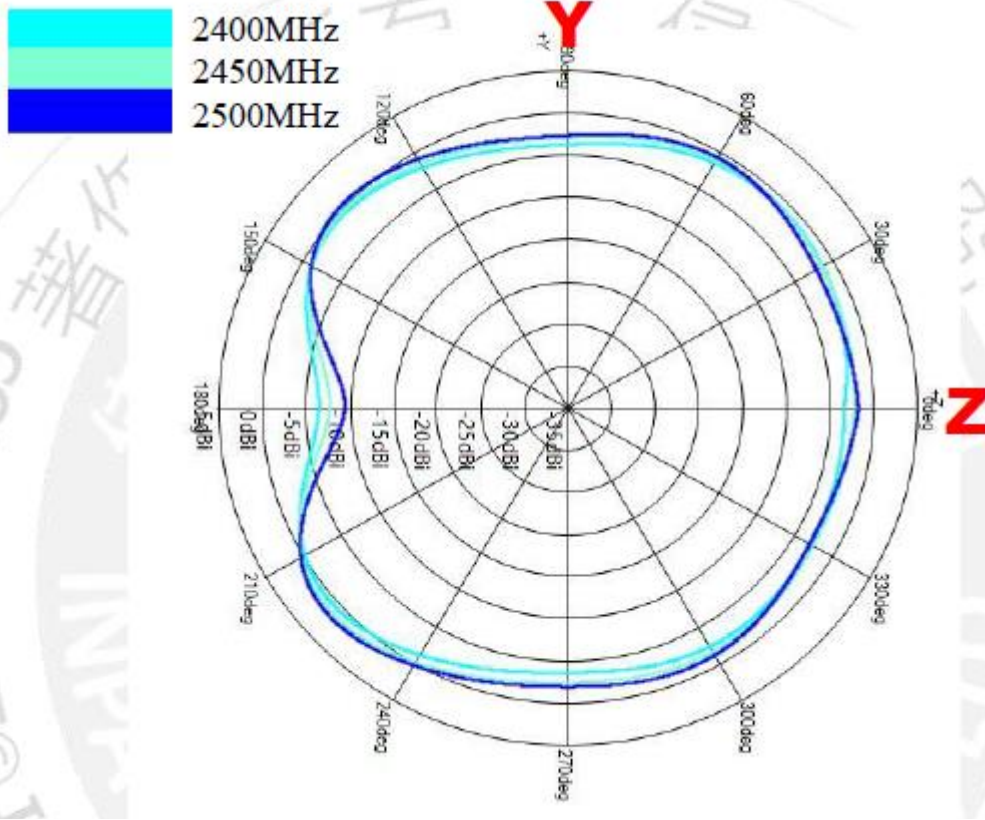



UNLESS OTHER SPECIFIED TOLERANCES ON :		 INPAQ TECHNOLOGY CO., LTD.	
X = N/A	X.X = N/A X.XX = N/A		
ANGLES = N/A		THIS DRAWINGS AND SPECIFICATIONS ARE THE PROPERTY OF INPAQ TECHNOLOGY CO.,LTD.AND SHALL NOT BE REPRODUCED OR USED AS THE BASIS FOR THE MANUFACTURE OR SALE OF APPARATUS OR DEVICES WITHOUT PERMISSION	
SCALE : N/A	UNIT : mm		
DRAWN BY : 李欣樺	CHECKED BY : 詹惠雯		
DESIGNED BY : 黃瑞郎	APPROVED BY : 陳振榮		
TITLE : RFFPA260700NNAB001		DOCUMENT NO.	SPEC REV. P1

Y-Z Plane

Phi=90.00deg

Gain . dB

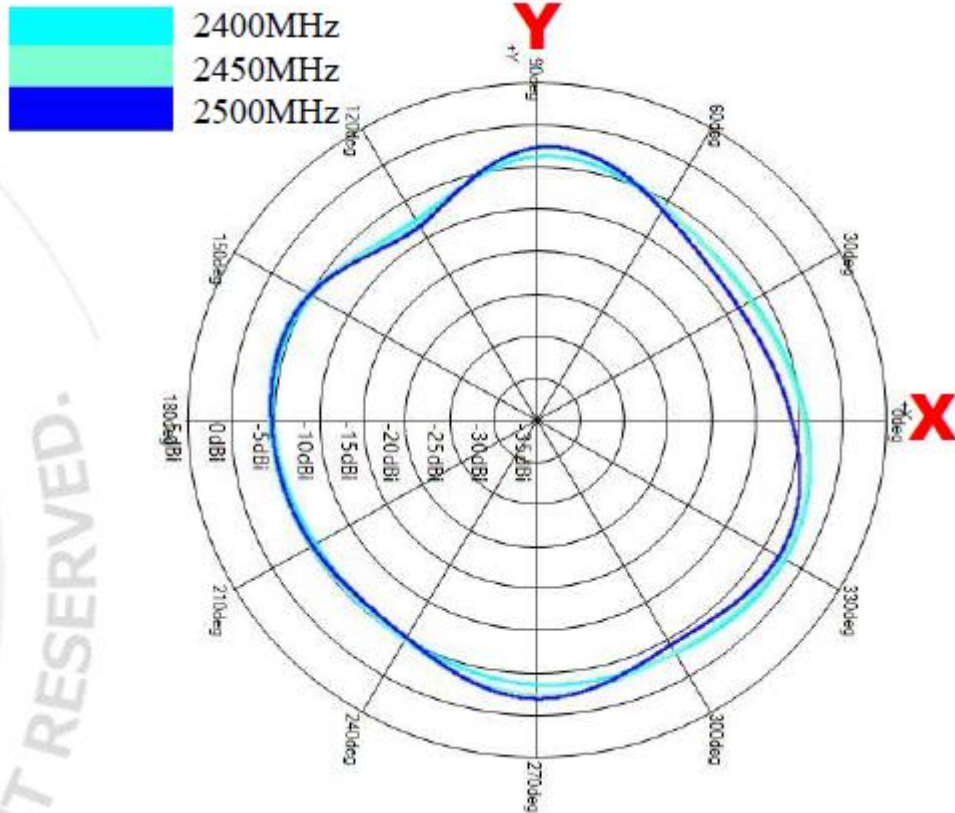


UNLESS OTHER SPECIFIED TOLERANCES ON :		 INPAQ TECHNOLOGY CO., LTD.
X = N/A	X.X = N/A X.XX = N/A	
ANGLES = N/A HOLEDIA = N/A		THIS DRAWINGS AND SPECIFICATIONS ARE THE PROPERTY OF INPAQ TECHNOLOGY CO.,LTD.AND SHALL NOT BE REPRODUCED OR USED AS THE BASIS FOR THE MANUFACTURE OR SALE OF APPARATUS OR DEVICES WITHOUT PERMISSION
SCALE : N/A	UNIT : mm	
DRAWN BY : 李欣樺	CHECKED BY : 詹惠雯	
DESIGNED BY : 黃瑞郎	APPROVED BY : 陳振榮	
TITLE : RFFPA260700NNAB001		DOCUMENT NO.
		SPEC REV. P1

X-Y Plane

Theta=90.00deg

Gain . dB



Frequency [MHz]	ZX plane		ZY plane		XY plane	
	Max Value [dBi]	Average [dBi]	Max Value [dBi]	Average [dBi]	Max Value [dBi]	Average [dBi]
2400	-1.95	-4.18	-0.20	-2.14	-2.12	-4.55
2450	-1.62	-3.98	0.19	-1.51	-2.37	-4.29
2500	-1.61	-4.19	0.27	-1.26	-2.04	-4.65

UNLESS OTHER SPECIFIED TOLERANCES ON :
 X = N/A X.X = N/A X.XX = N/A
 ANGLES = N/A HOLEDIA = N/A



INPAQ TECHNOLOGY CO., LTD.

SCALE : N/A UNIT : mm
 DRAWN BY : 李欣樺 CHECKED BY : 詹惠雯
 DESIGNED BY : 黃瑞郎 APPROVED BY : 陳振榮

THIS DRAWINGS AND SPECIFICATIONS ARE THE PROPERTY OF INPAQ TECHNOLOGY CO.,LTD.AND SHALL NOT BE REPRODUCED OR USED AS THE BASIS FOR THE MANUFACTURE OR SALE OF APPARATUS OR DEVICES WITHOUT PERMISSION

TITLE : RFFPA260700NNAB001

DOCUMENT NO.

SPEC REV. P1