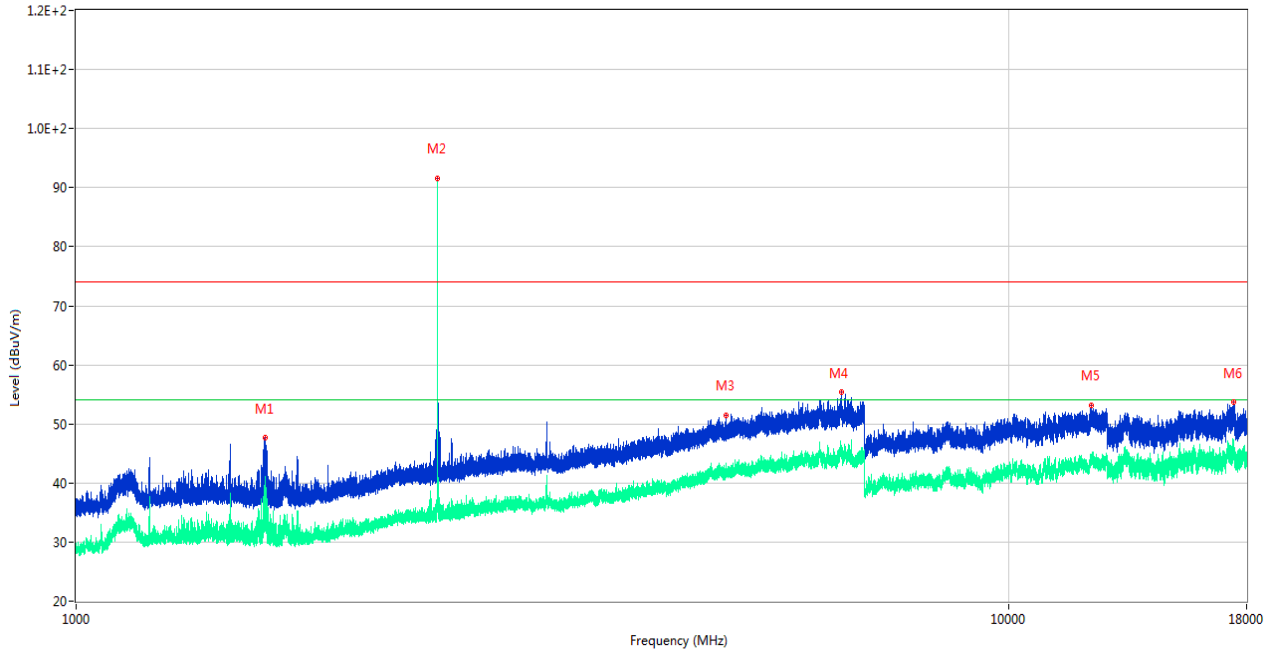


GFSK MIDDLE CHANNEL 1 GHz to 18 GHz, ANT V

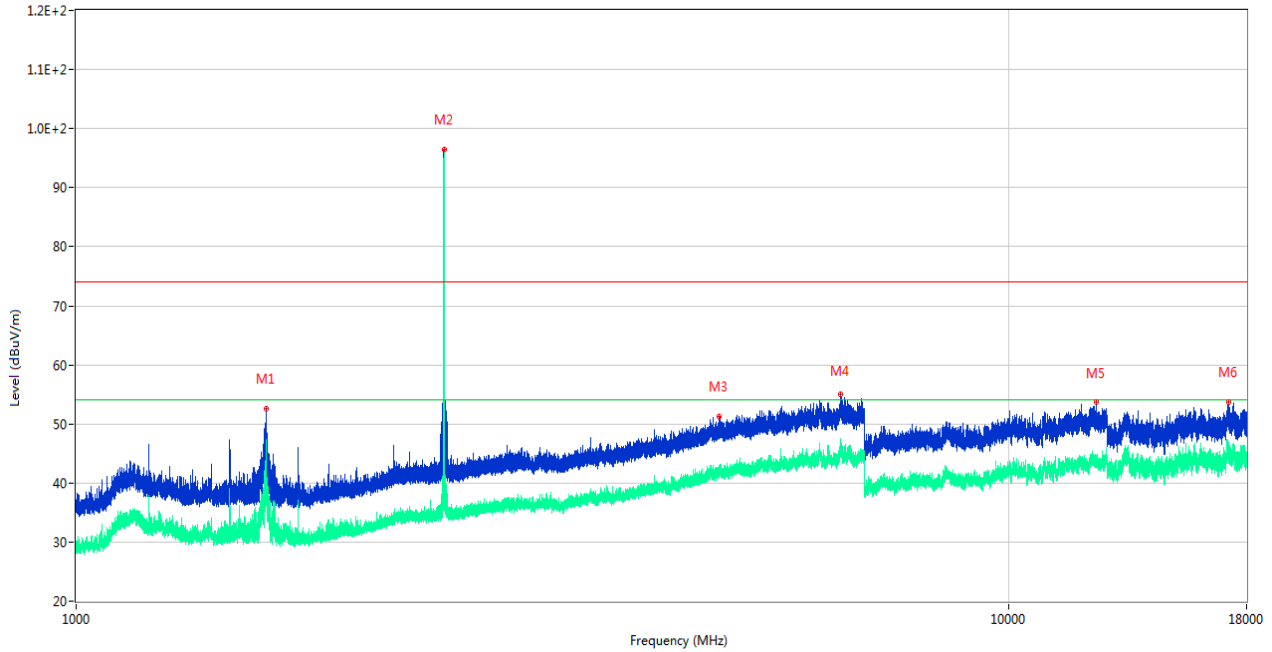
RE Test case_FCC Part 15C_FCC 15.247(2.4G)_1GHz-18GHz



No.	Frequency (MHz)	Results (dBuV/m)	Factor (dB)	Limit (dBuV/m)	Margin (dB)	Detector	Table (Degree)	Height (cm)	Antenna	Verdict
1	1595.300	47.62	-17.72	74.0	26.38	Peak	281.00	300	Vertical	Pass
1**	1595.300	36.11	-17.72	54.0	17.89	AV	281.00	300	Vertical	Pass
2	2440.800	91.57	-12.43	74.0	-17.57	Peak	221.00	150	Vertical	N/A
2**	2440.800	90.60	-12.43	54.0	-36.60	AV	221.00	150	Vertical	N/A
3	4978.800	51.47	-2.81	74.0	22.53	Peak	49.00	150	Vertical	Pass
3**	4978.800	42.01	-2.81	54.0	11.99	AV	49.00	150	Vertical	Pass
4	6613.800	55.43	1.20	74.0	18.57	Peak	227.00	100	Vertical	Pass
4**	6613.800	46.02	1.20	54.0	7.98	AV	227.00	100	Vertical	Pass
5	12252.912	53.21	0.97	74.0	20.79	Peak	203.00	400	Vertical	Pass
5**	12252.912	43.53	0.97	54.0	10.47	AV	203.00	400	Vertical	Pass
6	17421.187	53.64	3.72	74.0	20.36	Peak	329.00	200	Vertical	Pass
6**	17421.187	45.36	3.72	54.0	8.64	AV	329.00	200	Vertical	Pass

GFSK HIGH CHANNEL 1 GHz to 18 GHz, ANT H

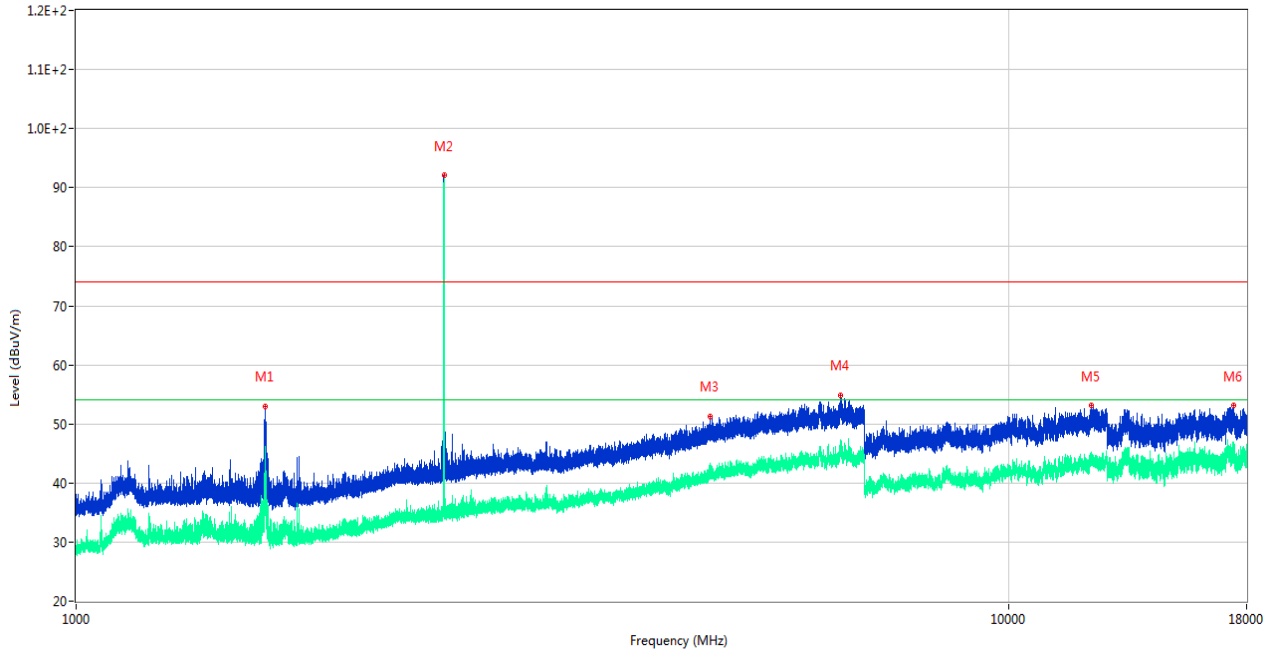
RE Test case_FCC Part 15C_FCC 15.247(2.4G)_1GHz-18GHz



No.	Frequency (MHz)	Results (dBuV/m)	Factor (dB)	Limit (dBuV/m)	Margin (dB)	Detector	Table (Degree)	Height (cm)	Antenna	Verdict
1	1598.500	52.57	-17.89	74.0	21.43	Peak	307.00	400	Horizontal	Pass
1**	1598.500	41.44	-17.89	54.0	12.56	AV	307.00	400	Horizontal	Pass
2	2479.900	96.49	-12.03	74.0	-22.49	Peak	21.00	150	Horizontal	N/A
2**	2479.900	96.01	-12.03	54.0	-42.01	AV	21.00	150	Horizontal	N/A
3	4898.600	51.17	-2.63	74.0	22.83	Peak	276.00	150	Horizontal	Pass
3**	4898.600	41.96	-2.63	54.0	12.04	AV	276.00	150	Horizontal	Pass
4	6601.000	55.04	0.49	74.0	18.96	Peak	266.00	400	Horizontal	Pass
4**	6601.000	46.24	0.49	54.0	7.76	AV	266.00	400	Horizontal	Pass
5	12415.925	53.62	1.41	74.0	20.38	Peak	347.00	200	Horizontal	Pass
5**	12415.925	43.27	1.41	54.0	10.73	AV	347.00	200	Horizontal	Pass
6	17233.762	53.76	1.54	74.0	20.24	Peak	15.00	200	Horizontal	Pass
6**	17233.762	44.33	1.54	54.0	9.67	AV	15.00	200	Horizontal	Pass

GFSK HIGH CHANNEL 1 GHz to 18 GHz, ANT V

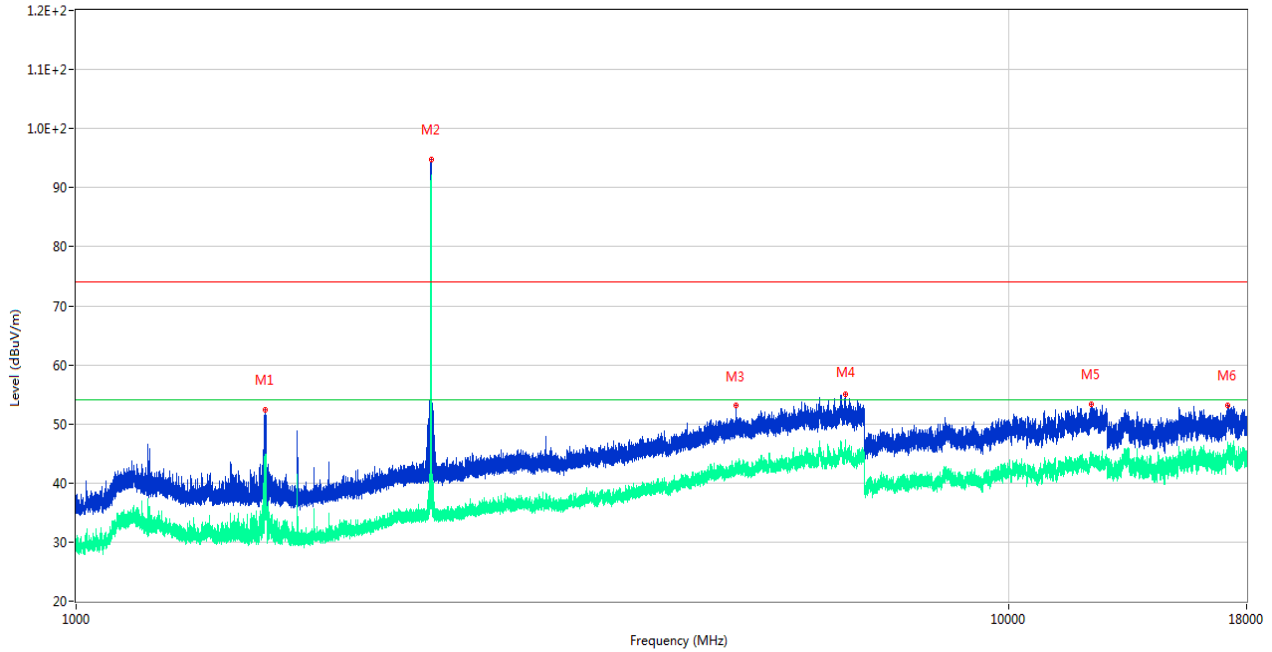
RE Test case_FCC Part 15C_FCC 15.247(2.4G)_1GHz-18GHz



No.	Frequency (MHz)	Results (dBuV/m)	Factor (dB)	Limit (dBuV/m)	Margin (dB)	Detector	Table (Degree)	Height (cm)	Antenna	Verdict
1	1595.400	53.03	-17.72	74.0	20.97	Peak	293.00	200	Vertical	Pass
1**	1595.400	42.12	-17.72	54.0	11.88	AV	293.00	200	Vertical	Pass
2	2479.900	92.11	-12.03	74.0	-18.11	Peak	114.00	100	Vertical	N/A
2**	2479.900	91.51	-12.03	54.0	-37.51	AV	114.00	100	Vertical	N/A
3	4782.400	51.28	-2.76	74.0	22.72	Peak	360.00	150	Vertical	Pass
3**	4782.400	42.31	-2.76	54.0	11.69	AV	360.00	150	Vertical	Pass
4	6607.200	54.90	1.50	74.0	19.10	Peak	203.00	200	Vertical	Pass
4**	6607.200	46.93	1.50	54.0	7.07	AV	203.00	200	Vertical	Pass
5	12274.763	53.08	1.61	74.0	20.92	Peak	27.00	300	Vertical	Pass
5**	12274.763	44.56	1.61	54.0	9.44	AV	27.00	300	Vertical	Pass
6	17426.698	53.07	3.56	74.0	20.93	Peak	182.00	200	Vertical	Pass
6**	17426.698	44.84	3.56	54.0	9.16	AV	182.00	200	Vertical	Pass

8-DPSK LOW CHANNEL 1 GHz to 18 GHz, ANT H

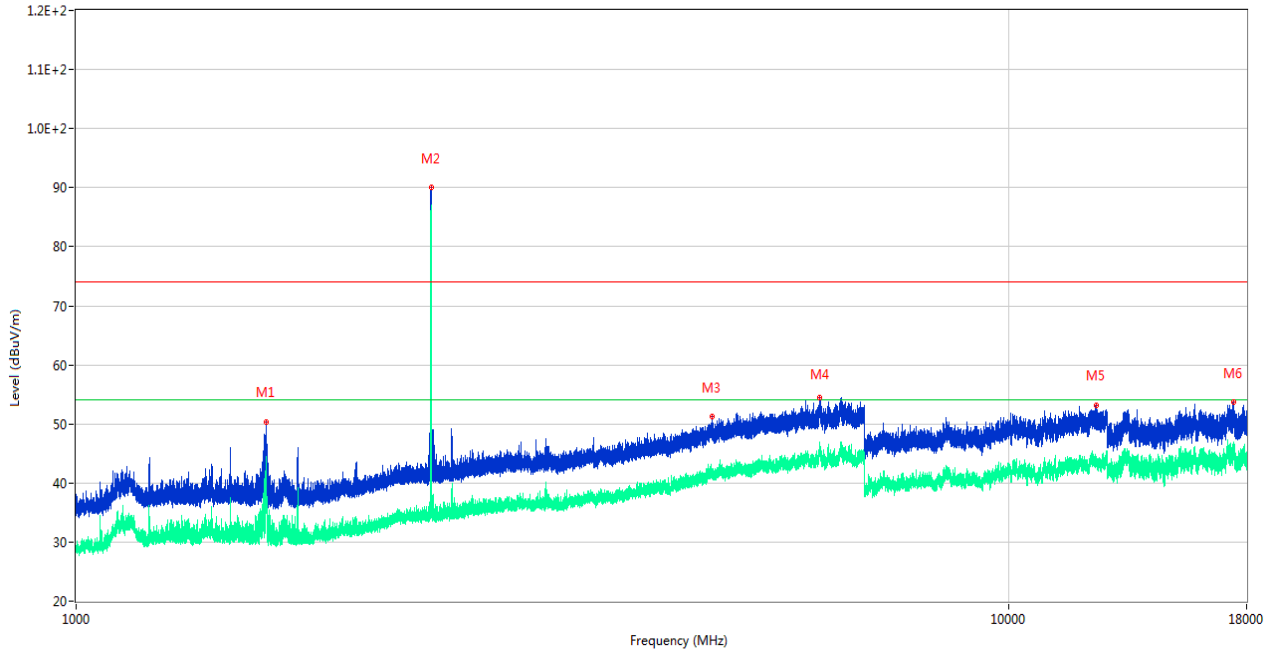
RE Test case_FCC Part 15C_FCC 15.247(2.4G)_1GHz-18GHz



No.	Frequency (MHz)	Results (dBuV/m)	Factor (dB)	Limit (dBuV/m)	Margin (dB)	Detector	Table (Degree)	Height (cm)	Antenna	Verdict
1	1593.500	52.45	-17.74	74.0	21.55	Peak	182.00	200	Horizontal	Pass
1**	1593.500	36.08	-17.74	54.0	17.92	AV	182.00	200	Horizontal	Pass
2	2402.100	94.76	-12.44	74.0	-20.76	Peak	15.00	200	Horizontal	N/A
2**	2402.100	92.11	-12.44	54.0	-38.11	AV	15.00	200	Horizontal	N/A
3	5101.800	53.12	-2.12	74.0	20.88	Peak	71.00	150	Horizontal	Pass
3**	5101.800	42.21	-2.12	54.0	11.79	AV	71.00	150	Horizontal	Pass
4	6680.000	55.01	0.17	74.0	18.99	Peak	350.00	200	Horizontal	Pass
4**	6680.000	45.51	0.17	54.0	8.49	AV	350.00	200	Horizontal	Pass
5	12261.826	53.40	1.15	74.0	20.60	Peak	218.00	300	Horizontal	Pass
5**	12261.826	44.15	1.15	54.0	9.85	AV	218.00	300	Horizontal	Pass
6	17183.625	53.21	2.57	74.0	20.79	Peak	329.00	300	Horizontal	Pass
6**	17183.625	45.47	2.57	54.0	8.53	AV	329.00	300	Horizontal	Pass

8-DPSK LOW CHANNEL 1 GHz to 18 GHz, ANT V

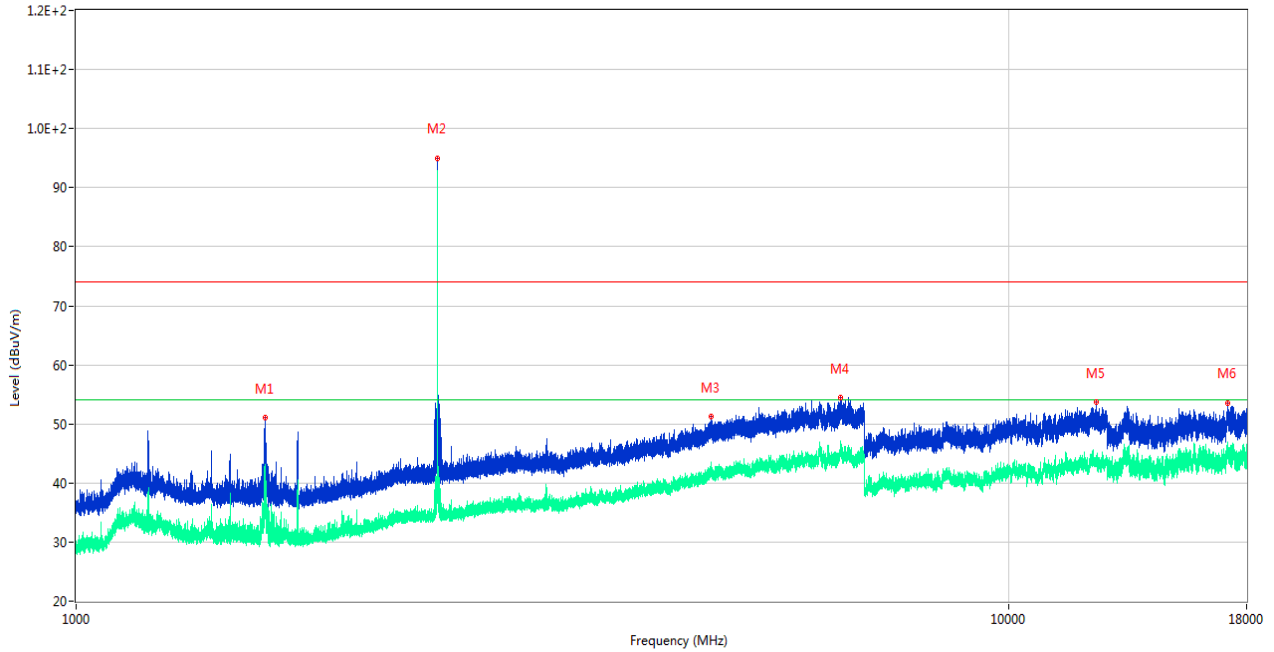
RE Test case_FCC Part 15C_FCC 15.247(2.4G)_1GHz-18GHz



No.	Frequency (MHz)	Results (dBuV/m)	Factor (dB)	Limit (dBuV/m)	Margin (dB)	Detector	Table (Degree)	Height (cm)	Antenna	Verdict
1	1598.100	50.39	-17.89	74.0	23.61	Peak	277.00	100	Vertical	Pass
1**	1598.100	37.16	-17.89	54.0	16.84	AV	277.00	100	Vertical	Pass
2	2402.000	90.04	-12.46	74.0	-16.04	Peak	118.00	200	Vertical	N/A
2**	2402.000	86.94	-12.46	54.0	-32.94	AV	118.00	200	Vertical	N/A
3	4804.200	51.21	-3.16	74.0	22.79	Peak	235.00	100	Vertical	Pass
3**	4804.200	41.29	-3.16	54.0	12.71	AV	235.00	100	Vertical	Pass
4	6272.800	54.42	0.57	74.0	19.58	Peak	276.00	400	Vertical	Pass
4**	6272.800	46.86	0.57	54.0	7.14	AV	276.00	400	Vertical	Pass
5	12416.787	53.17	1.41	74.0	20.83	Peak	24.00	400	Vertical	Pass
5**	12416.787	43.61	1.41	54.0	10.39	AV	24.00	400	Vertical	Pass
6	17420.663	53.70	3.74	74.0	20.30	Peak	258.00	200	Vertical	Pass
6**	17420.663	45.42	3.74	54.0	8.58	AV	258.00	200	Vertical	Pass

8-DPSK MIDDLE CHANNEL 1 GHz to 18 GHz, ANT H

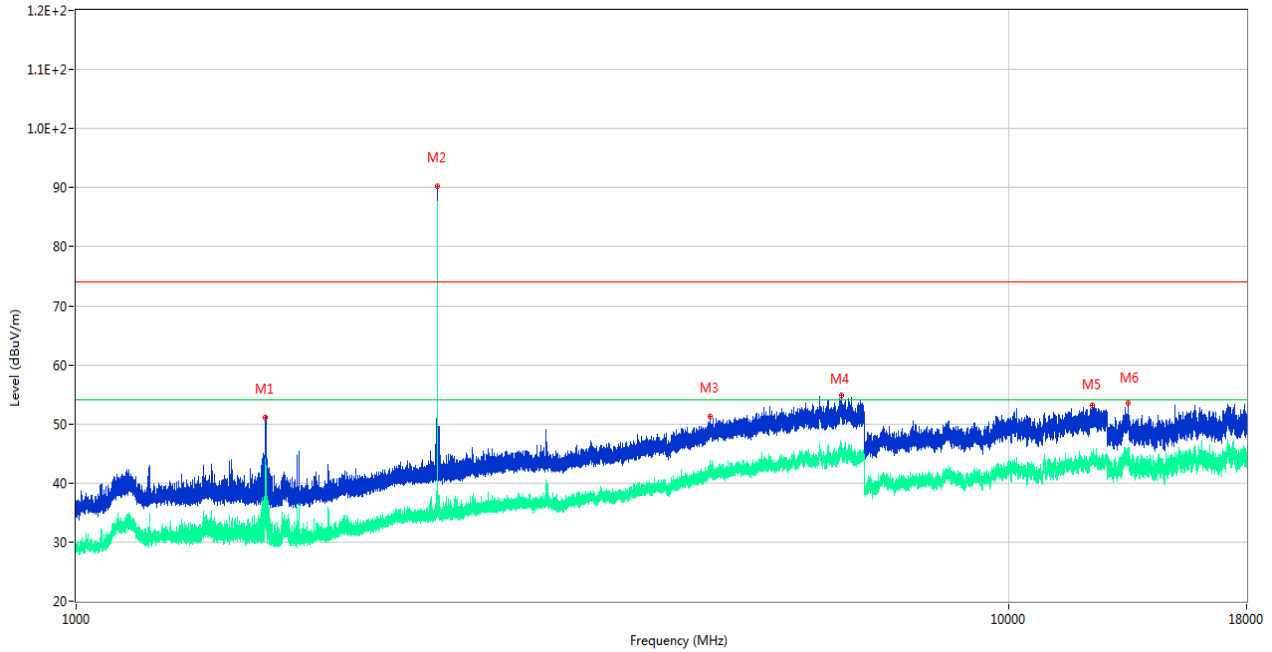
RE Test case_FCC Part 15C_FCC 15.247(2.4G)_1GHz-18GHz



No.	Frequency (MHz)	Results (dBuV/m)	Factor (dB)	Limit (dBuV/m)	Margin (dB)	Detector	Table (Degree)	Height (cm)	Antenna	Verdict
1	1594.300	51.01	-17.72	74.0	22.99	Peak	246.00	100	Horizontal	Pass
1**	1594.300	36.44	-17.72	54.0	17.56	AV	246.00	100	Horizontal	Pass
2	2441.000	95.02	-12.44	74.0	-21.02	Peak	24.00	200	Horizontal	N/A
2**	2441.000	92.46	-12.44	54.0	-38.46	AV	24.00	200	Horizontal	N/A
3	4792.800	51.25	-2.42	74.0	22.75	Peak	360.00	200	Horizontal	Pass
3**	4792.800	41.96	-2.42	54.0	12.04	AV	360.00	200	Horizontal	Pass
4	6607.600	54.39	1.52	74.0	19.61	Peak	307.00	200	Horizontal	Pass
4**	6607.600	45.85	1.52	54.0	8.15	AV	307.00	200	Horizontal	Pass
5	12410.750	53.65	1.44	74.0	20.35	Peak	186.00	300	Horizontal	Pass
5**	12410.750	43.60	1.44	54.0	10.40	AV	186.00	300	Horizontal	Pass
6	17172.074	53.54	2.44	74.0	20.46	Peak	126.00	300	Horizontal	Pass
6**	17172.074	46.80	2.44	54.0	7.20	AV	126.00	300	Horizontal	Pass

8-DPSK MIDDLE CHANNEL 1 GHz to 18 GHz, ANT V

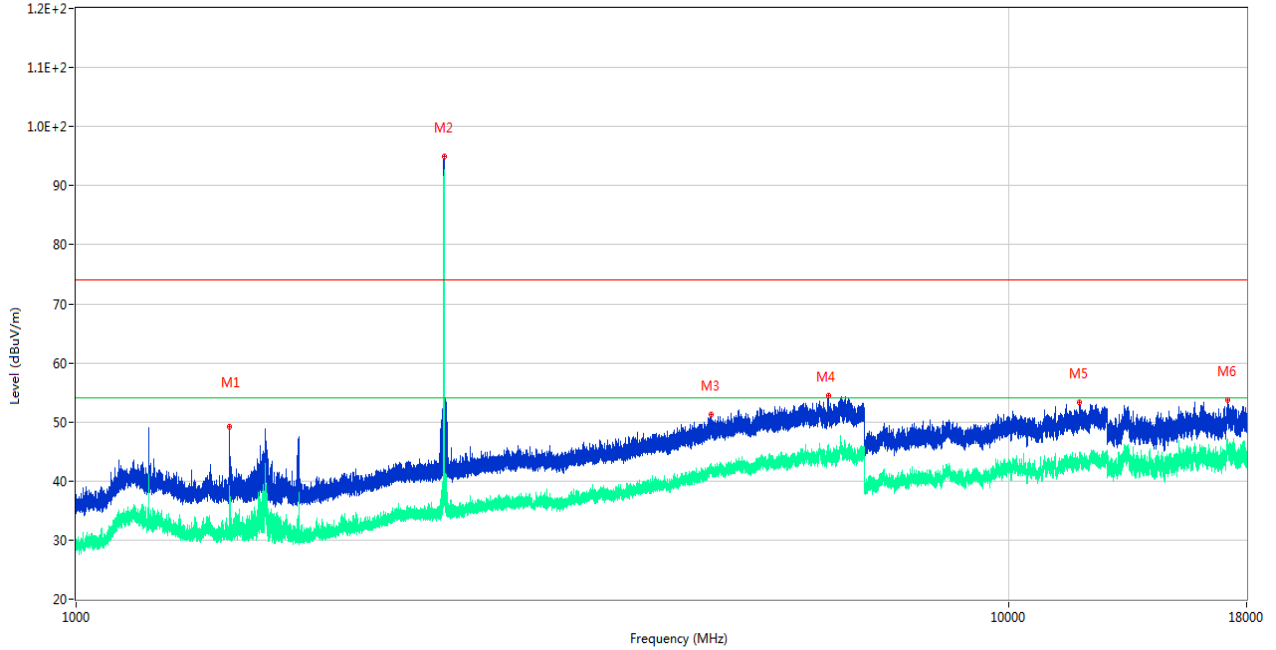
RE Test case_FCC Part 15C_FCC 15.247(2.4G)_1GHz-18GHz



No.	Frequency (MHz)	Results (dBuV/m)	Factor (dB)	Limit (dBuV/m)	Margin (dB)	Detector	Table (Degree)	Height (cm)	Antenna	Verdict
1	1595.700	51.05	-17.72	74.0	22.95	Peak	277.00	100	Vertical	Pass
1**	1595.700	40.17	-17.72	54.0	13.83	AV	277.00	100	Vertical	Pass
2	2440.900	90.15	-12.43	74.0	-16.15	Peak	215.00	150	Vertical	N/A
2**	2440.900	86.90	-12.43	54.0	-32.90	AV	215.00	150	Vertical	N/A
3	4789.400	51.19	-2.41	74.0	22.81	Peak	196.00	150	Vertical	Pass
3**	4789.400	42.18	-2.41	54.0	11.82	AV	196.00	150	Vertical	Pass
4	6614.400	54.81	1.08	74.0	19.19	Peak	305.00	400	Vertical	Pass
4**	6614.400	45.46	1.08	54.0	8.54	AV	305.00	400	Vertical	Pass
5	12284.537	53.07	1.78	74.0	20.93	Peak	267.00	200	Vertical	Pass
5**	12284.537	44.38	1.78	54.0	9.62	AV	267.00	200	Vertical	Pass
6	13451.662	53.55	0.62	74.0	20.45	Peak	355.00	300	Vertical	Pass
6**	13451.662	45.96	0.62	54.0	8.04	AV	355.00	300	Vertical	Pass

8-DPSK HIGH CHANNEL 1 GHz to 18 GHz, ANT H

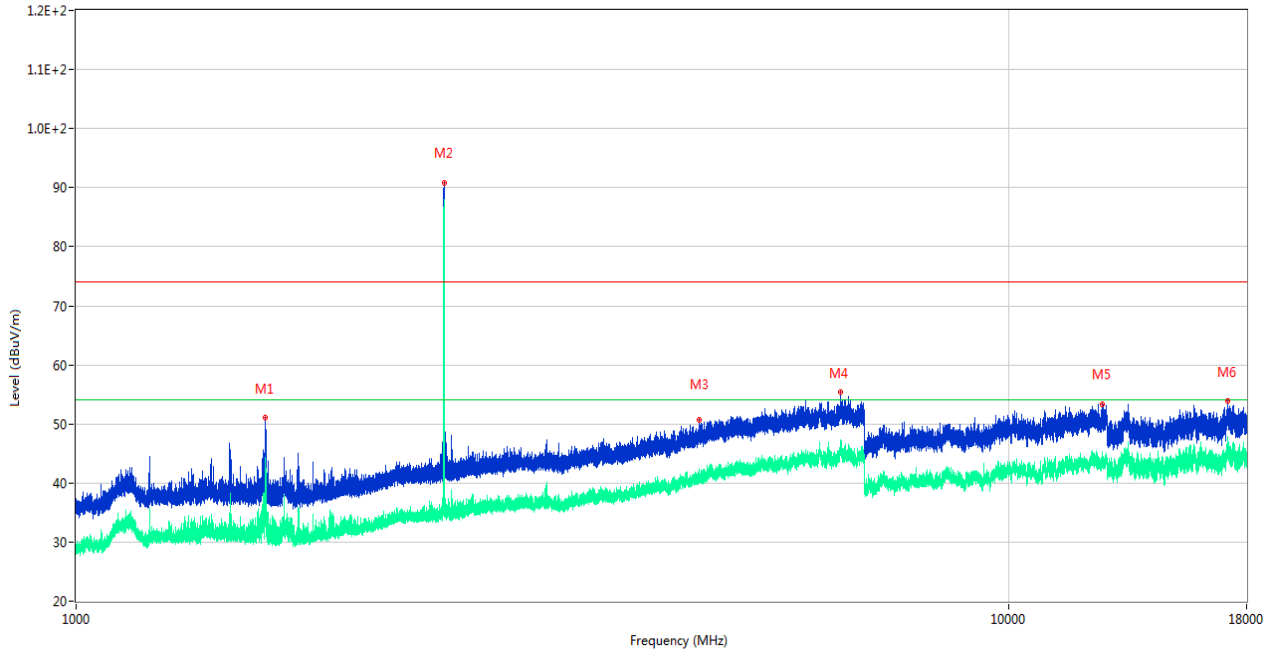
RE Test case_FCC Part 15C_FCC 15.247(2.4G)_1GHz-18GHz



No.	Frequency (MHz)	Results (dBuV/m)	Factor (dB)	Limit (dBuV/m)	Margin (dB)	Detector	Table (Degree)	Height (cm)	Antenna	Verdict
1	1461.800	49.25	-17.50	74.0	24.75	Peak	285.00	100	Horizontal	Pass
1**	1461.800	39.22	-17.50	54.0	14.78	AV	285.00	100	Horizontal	Pass
2	2480.100	94.94	-12.02	74.0	-20.94	Peak	29.00	200	Horizontal	N/A
2**	2480.100	92.72	-12.02	54.0	-38.72	AV	29.00	200	Horizontal	N/A
3	4791.800	51.20	-2.48	74.0	22.80	Peak	176.00	150	Horizontal	Pass
3**	4791.800	41.45	-2.48	54.0	12.55	AV	176.00	150	Horizontal	Pass
4	6405.000	54.50	0.26	74.0	19.50	Peak	240.00	200	Horizontal	Pass
4**	6405.000	45.57	0.26	54.0	8.43	AV	240.00	200	Horizontal	Pass
5	11910.787	53.24	1.52	74.0	20.76	Peak	55.00	400	Horizontal	Pass
5**	11910.787	43.55	1.52	54.0	10.45	AV	55.00	400	Horizontal	Pass
6	17173.386	53.70	2.46	74.0	20.30	Peak	128.00	300	Horizontal	Pass
6**	17173.386	46.40	2.46	54.0	7.60	AV	128.00	300	Horizontal	Pass

8-DPSK HIGH CHANNEL 1 GHz to 18 GHz, ANT V

RE Test case_FCC Part 15C_FCC 15.247(2.4G)_1GHz-18GHz



No.	Frequency (MHz)	Results (dBuV/m)	Factor (dB)	Limit (dBuV/m)	Margin (dB)	Detector	Table (Degree)	Height (cm)	Antenna	Verdict
1	1595.900	51.05	-17.72	74.0	22.95	Peak	299.00	300	Vertical	Pass
1**	1595.900	37.08	-17.72	54.0	16.92	AV	299.00	300	Vertical	Pass
2	2480.000	90.82	-12.02	74.0	-16.82	Peak	119.00	150	Vertical	N/A
2**	2480.000	87.66	-12.02	54.0	-33.66	AV	119.00	150	Vertical	N/A
3	4656.400	50.66	-3.48	74.0	23.34	Peak	267.00	100	Vertical	Pass
3**	4656.400	41.03	-3.48	54.0	12.97	AV	267.00	100	Vertical	Pass
4	6609.800	55.37	1.54	74.0	18.63	Peak	298.00	400	Vertical	Pass
4**	6609.800	46.46	1.54	54.0	7.54	AV	298.00	400	Vertical	Pass
5	12612.862	53.37	1.88	74.0	20.63	Peak	268.00	100	Vertical	Pass
5**	12612.862	43.93	1.88	54.0	10.07	AV	268.00	100	Vertical	Pass
6	17190.449	53.88	2.32	74.0	20.12	Peak	88.00	400	Vertical	Pass
6**	17190.449	46.97	2.32	54.0	7.03	AV	88.00	400	Vertical	Pass

5.11 Band Edge (Restricted-band band-edge)

5.11.1 Limit

FCC §15.209&15.247(d)

Radiated emission outside the frequency band attenuation below the general limits specified in FCC section 15.209(a) is not required. In addition, radiated emissions which fall in the restricted bands, as defined in FCC section 15.205(a), must also comply with the radiated emission limits specified in FCC section 15.209(a).

5.11.2 Test Setup

See section 4.5.3 to 4.5.5 for test setup description for the antenna port. The photo of test setup please refer to ANNEX A.

5.11.3 Test Procedure

The measurement frequency range is from 9 kHz to the 10th harmonic of the fundamental frequency. The Turn Table is actuated to turn from 0° to 360°, and both horizontal and vertical polarizations of the Test Antenna are used to find the maximum radiated power. Mid channels on all channel bandwidth verified. Only the worst RB size/offset presented.

The power of the EUT transmitting frequency should be ignored.

All Spurious Emission tests were performed in X, Y, Z axis direction. And only the worst axis test condition was recorded in this test report.

Use the following spectrum analyzer settings:

Span = wide enough to fully capture the emission being measured

RBW = 1 MHz for $f \geq 1$ GHz, 100 kHz for $f < 1$ GHz

VBW \geq RBW

Sweep = auto

Detector function = peak

Trace = max hold

For measurement below 1GHz, If the emission level of the EUT measured by the peak detector is 3 dB lower than the applicable limit, the peak emission level will be reported, Otherwise, the emission measurement will be repeated using the quasi-peak detector and reported.

5.11.4 Test Result

Note ¹: The lowest and highest channels are tested to verify the band edge emissions. Please refer to the following the plots for emissions values.

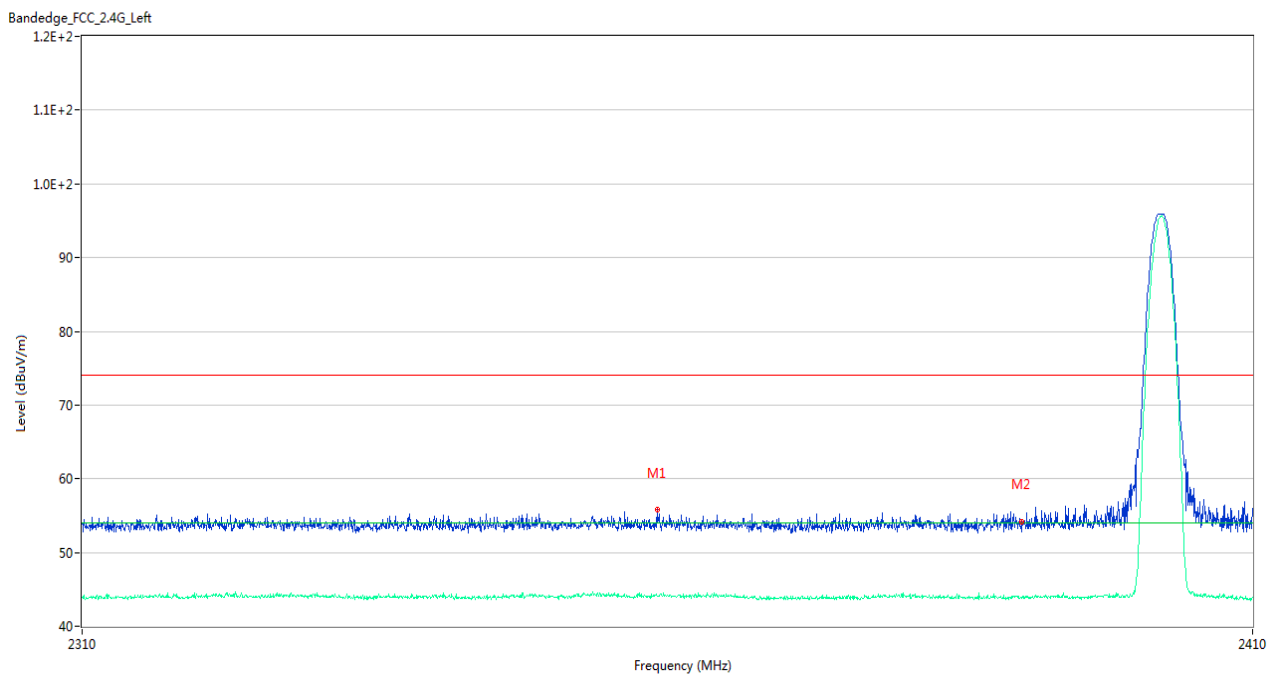
Note ²: The test data all are tested in the vertical and horizontal antenna which the trace is max hold. So these plots have shown the worst case.

Note ³: According the ANSI C63.10-2013, where limits are specified for both average and peak (or quasi-peak) detector functions, if the peak (or quasi-peak) measured value complies with the average limit, it is unnecessary to perform an average measurement.

Note ⁴: The Level (dBuV/m) has been corrected by factor.

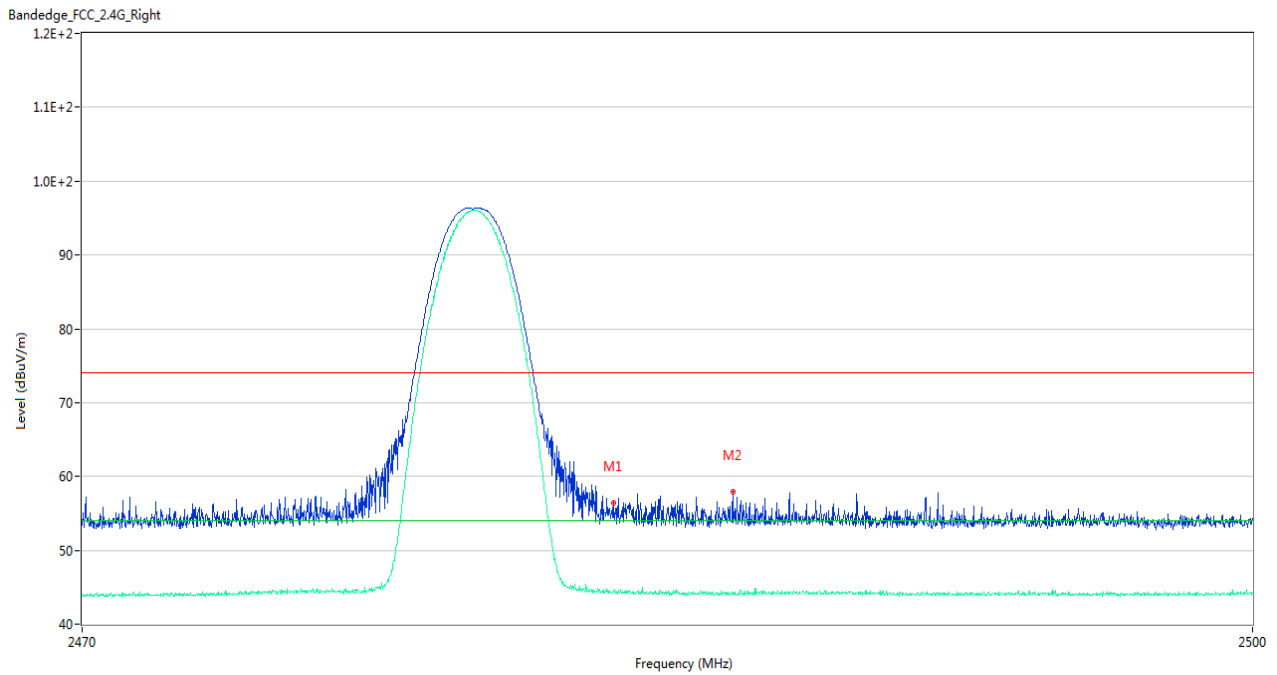
Test Data and Plots

GFSK LOW CHANNEL



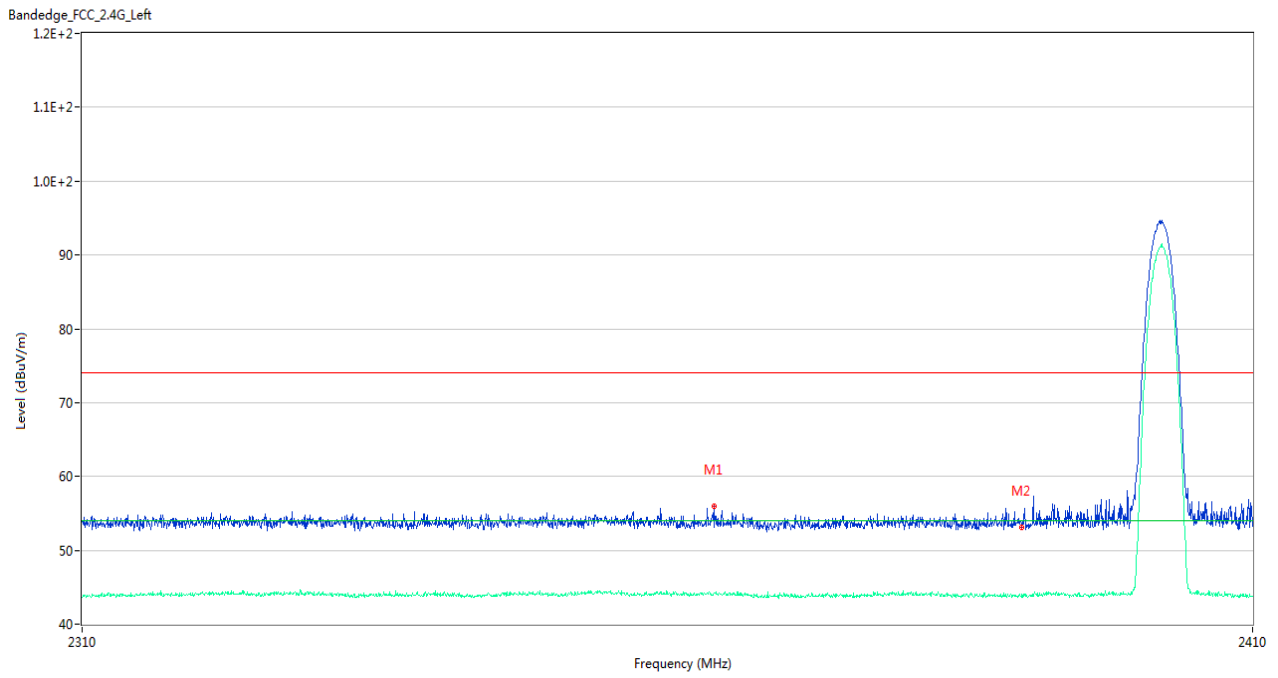
No.	Frequency (MHz)	Results (dBuV/m)	Factor (dB)	Limit (dBuV/m)	Margin (dB)	Detector	Table (Degree)	Height (cm)	Antenna	Verdict
1	2358.600	55.76	-0.23	74.0	18.24	Peak	138.00	100	Horizontal	Pass
1**	2358.600	44.13	-0.23	54.0	9.87	AV	138.00	100	Horizontal	Pass
2	2389.950	54.21	-0.59	74.0	19.79	Peak	176.00	100	Horizontal	Pass
2**	2389.950	43.90	-0.59	54.0	10.10	AV	176.00	100	Horizontal	Pass

GFSK HIGH CHANNEL



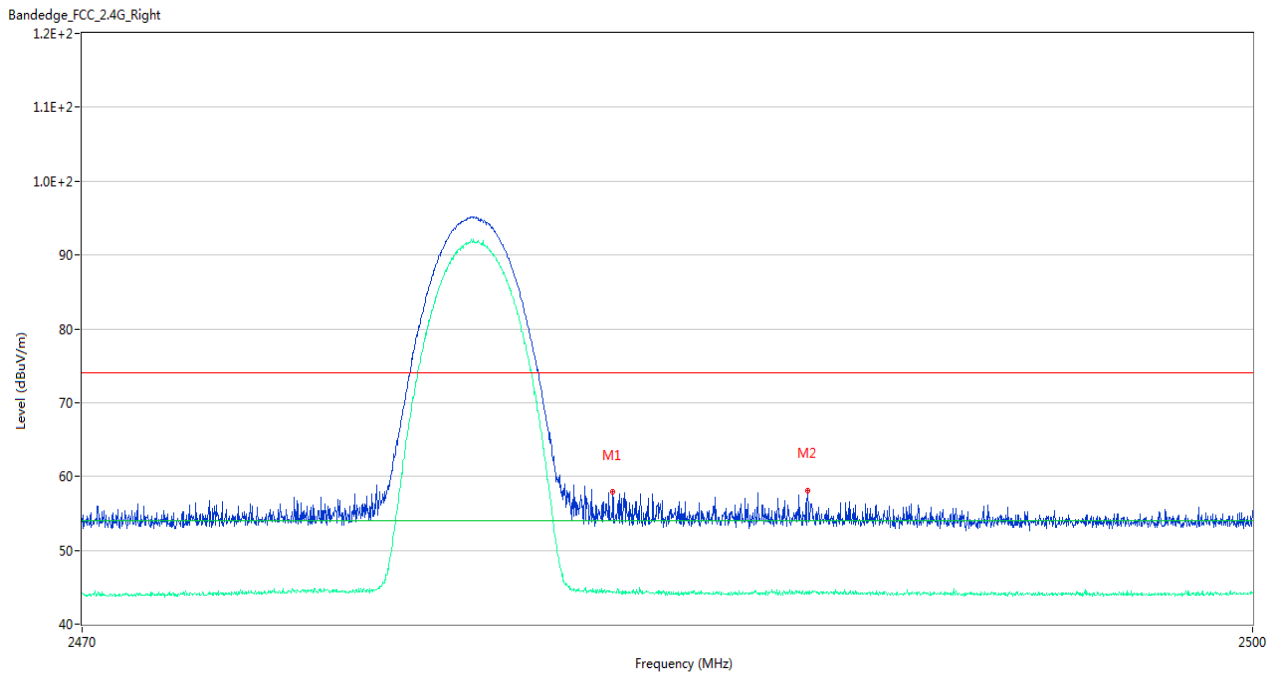
No.	Frequency (MHz)	Results (dBuV/m)	Factor (dB)	Limit (dBuV/m)	Margin (dB)	Detector	Table (Degree)	Height (cm)	Antenna	Verdict
1	2483.590	56.40	-0.06	74.0	17.60	Peak	50.00	100	Horizontal	Pass
1**	2483.590	44.45	-0.06	54.0	9.55	AV	50.00	100	Horizontal	Pass
2	2486.635	57.86	-0.21	74.0	16.14	Peak	31.00	100	Horizontal	Pass
2**	2486.635	44.07	-0.21	54.0	9.93	AV	31.00	100	Horizontal	Pass

8-DPSK LOW CHANNEL



No.	Frequency (MHz)	Results (dBuV/m)	Factor (dB)	Limit (dBuV/m)	Margin (dB)	Detector	Table (Degree)	Height (cm)	Antenna	Verdict
1	2363.450	55.97	-0.26	74.0	18.03	Peak	1.00	100	Horizontal	Pass
1**	2363.450	44.19	-0.26	54.0	9.81	AV	1.00	100	Horizontal	Pass
2	2389.950	53.08	-0.59	74.0	20.92	Peak	72.00	200	Horizontal	Pass
2**	2389.950	44.06	-0.59	54.0	9.94	AV	72.00	200	Horizontal	Pass

8-DPSK HIGH CHANNEL



No.	Frequency (MHz)	Results (dBuV/m)	Factor (dB)	Limit (dBuV/m)	Margin (dB)	Detector	Table (Degree)	Height (cm)	Antenna	Verdict
1	2483.560	57.90	-0.06	74.0	16.10	Peak	102.00	200	Horizontal	Pass
1**	2483.560	44.18	-0.06	54.0	9.82	AV	102.00	200	Horizontal	Pass
2	2488.555	58.14	-0.07	74.0	15.86	Peak	60.00	150	Horizontal	Pass
2**	2488.555	44.32	-0.07	54.0	9.68	AV	60.00	150	Horizontal	Pass

ANNEX A TEST SETUP PHOTOS

A.1 Radiated Test Photo

Below 30MHz



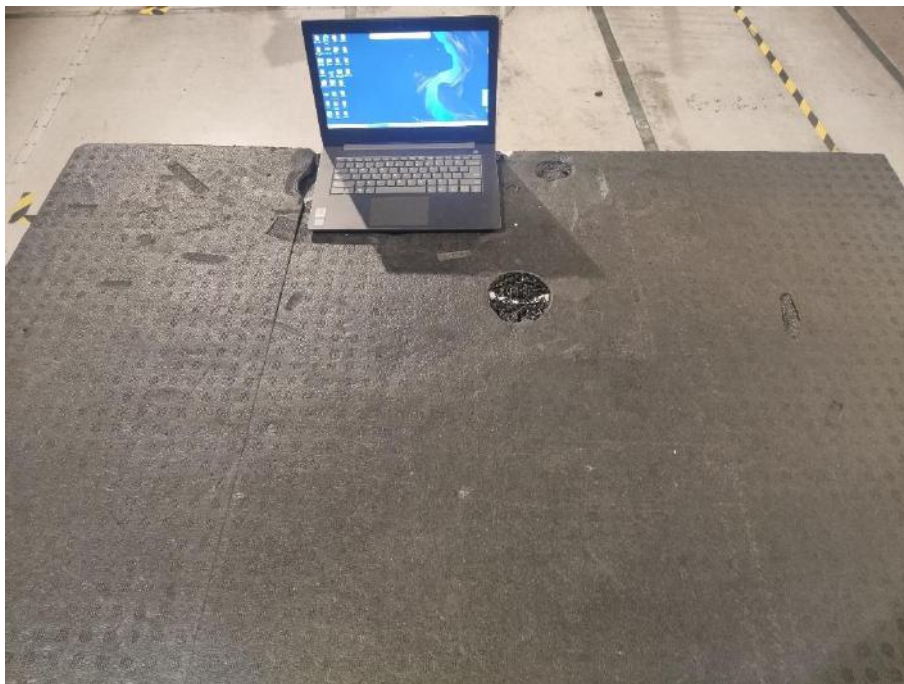
Close-up



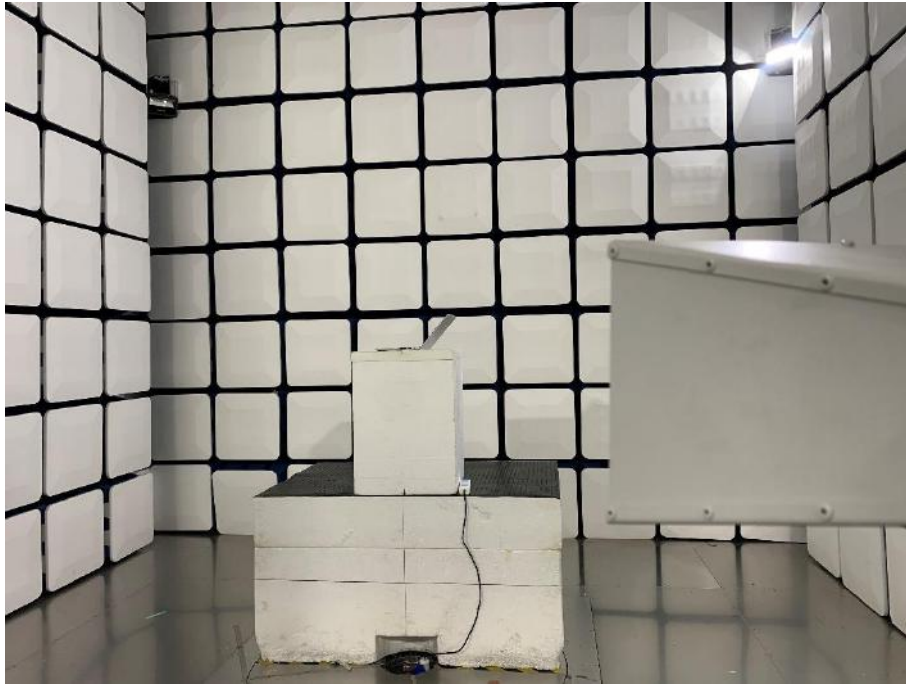
30MHz-1GHz



Close-up



Above 1GHz

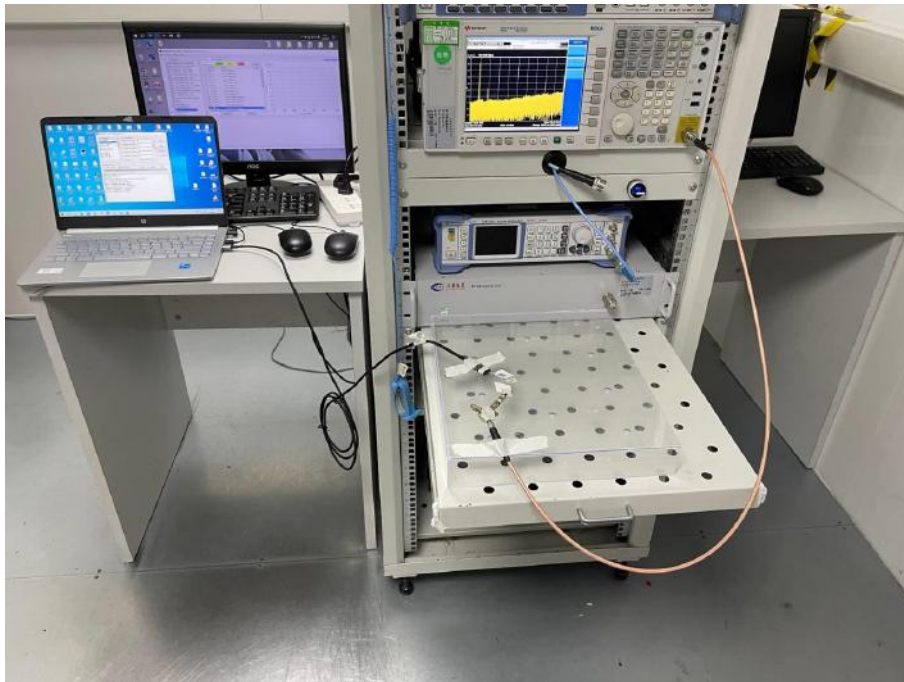


Close-up



A.2 Conducted Test Photo

Conducted Test



A.3 Conducted Emissions

Test Photo 1

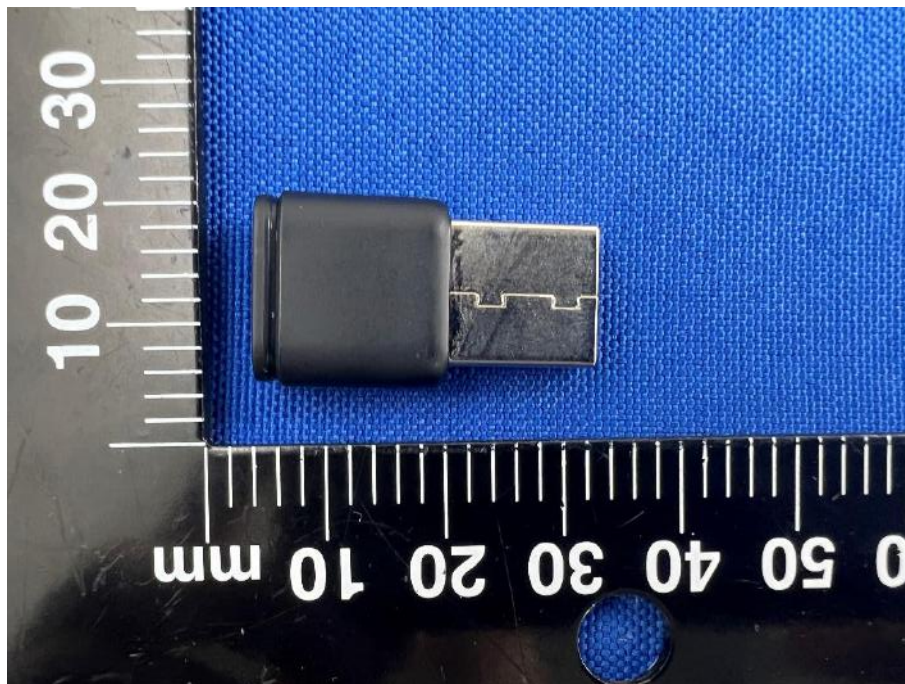


Test Photo 2

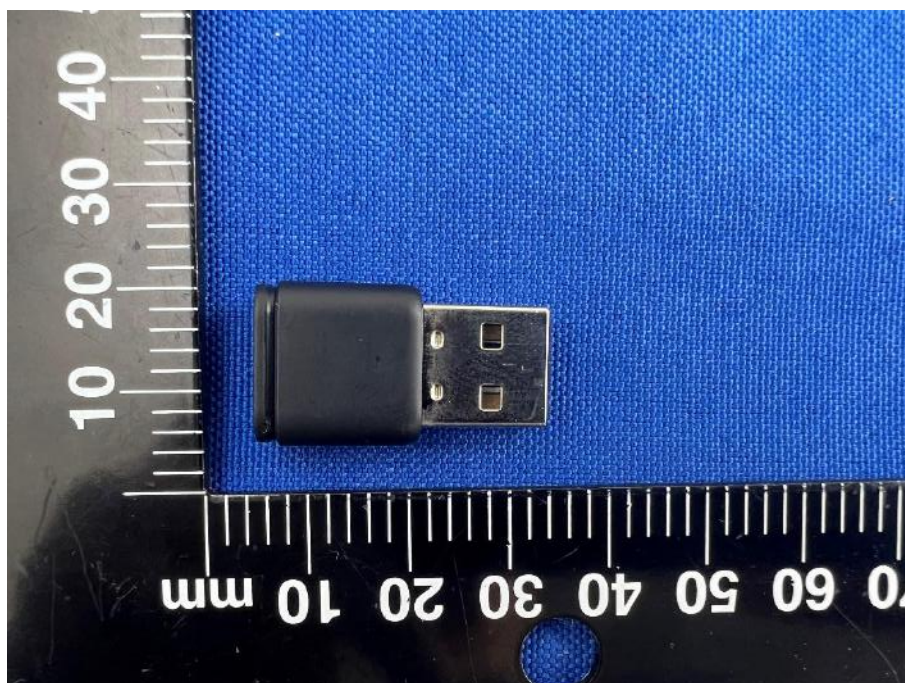


ANNEX B EUT EXTERNAL PHOTOS

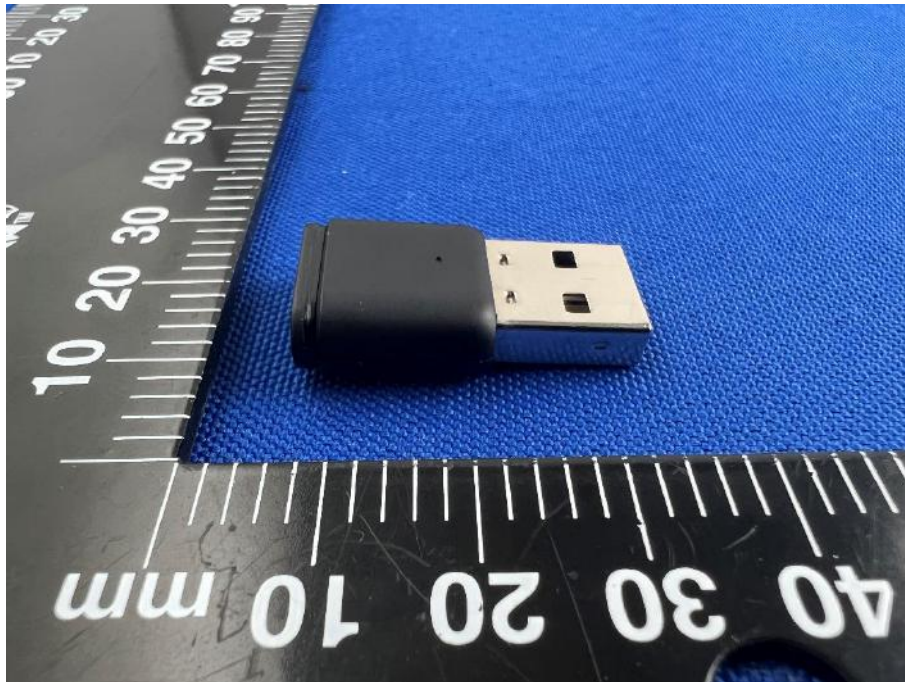
FRONT VIEW OF EUT



REAR VIEW OF EUT



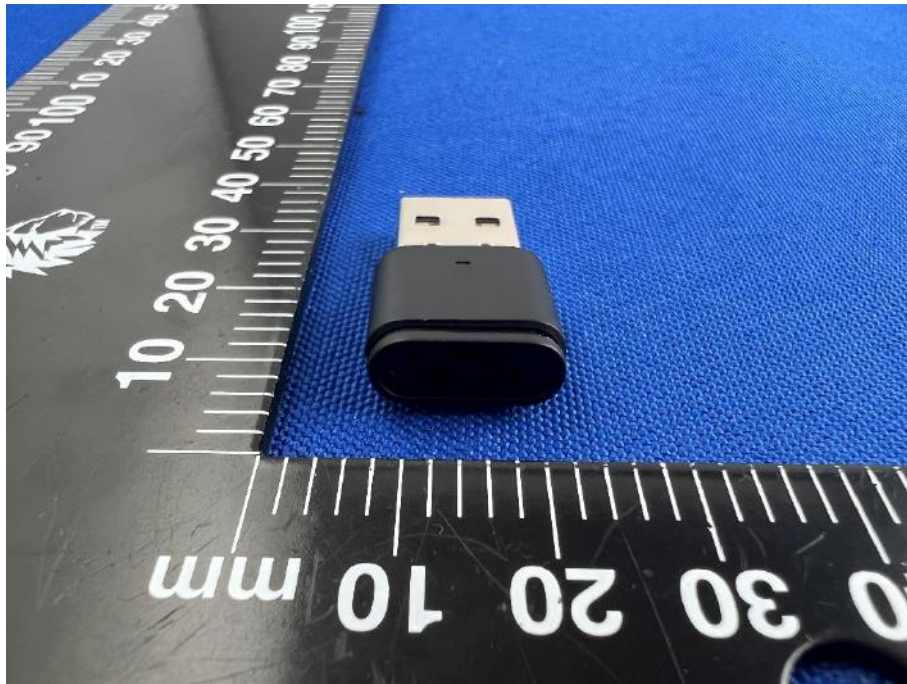
LEFT VIEW OF EUT



RIGHT VIEW OF EUT



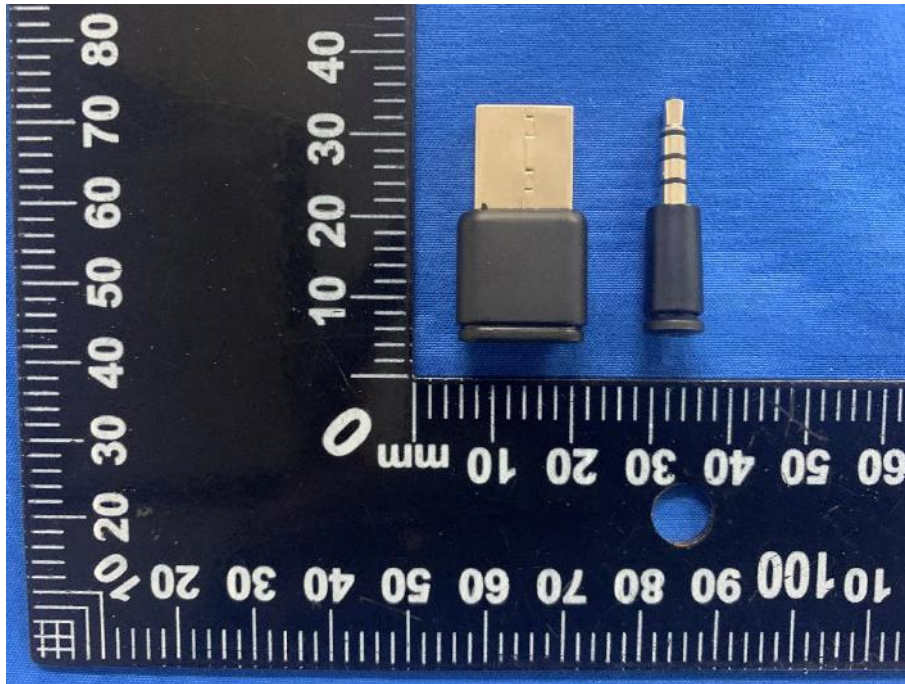
TOP VIEW OF EUT



BOTTOM VIEW OF EUT

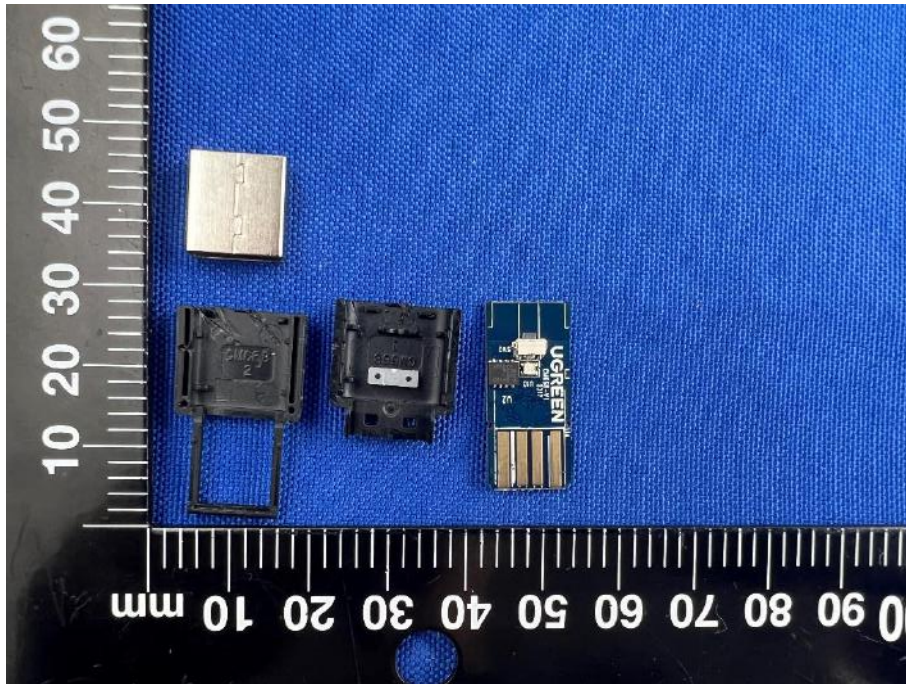


Accessory-AUX Accessories

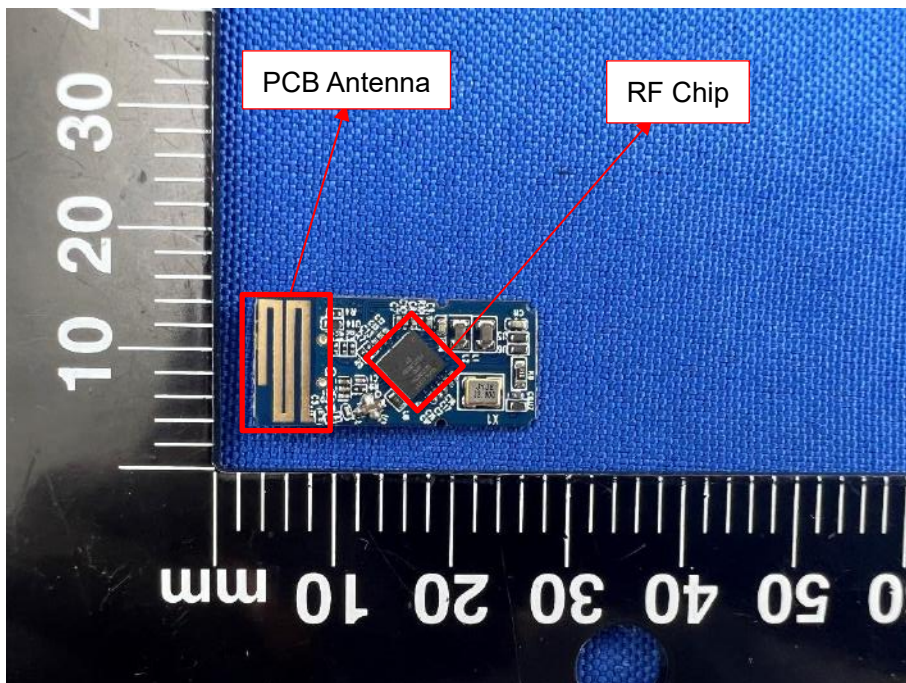


ANNEX C EUT INTERNAL PHOTOS

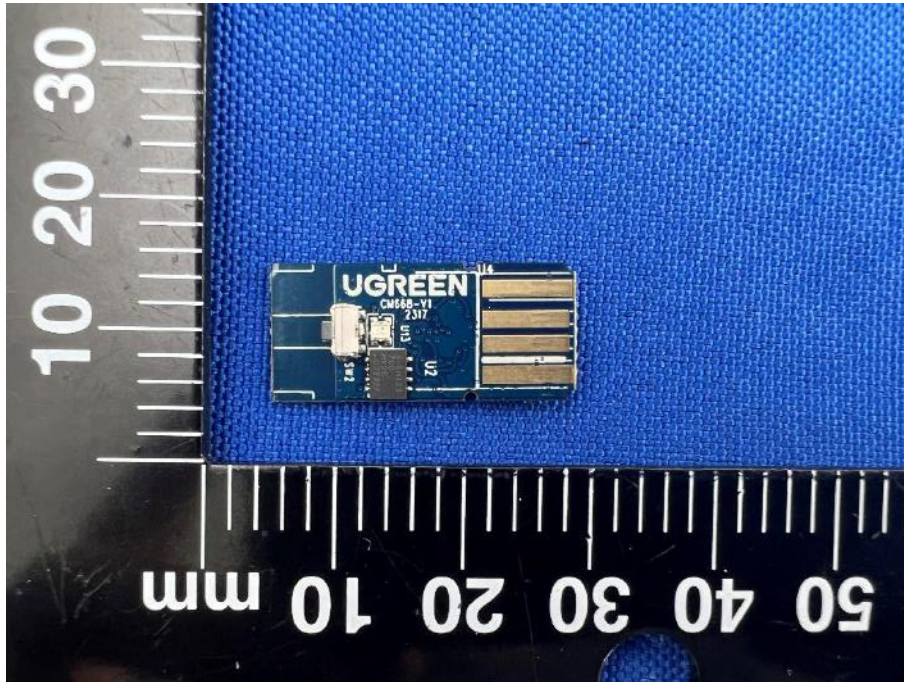
EUT UNCOVER VIEW



MAIN BOARD TOP VIEW



MAIN BOARD REAR VIEW



Statement

1. The laboratory guarantees the scientificity, accuracy and impartiality of the test, and is responsible for all the information in the report, except the information provided by the customer. The customer is responsible for the impact of the information provided on the validity of the results.
2. The report without China inspection body and laboratory Mandatory Approval (CMA) mark has no effect of proving to the society.
3. For the report with CNAS mark or A2LA mark, the items marked with "☆" are not within the accredited scope.
4. This report is invalid if it is altered, without the signature of the testing and approval personnel, or without the "inspection and testing dedicated stamp" or test report stamp.
5. The test data and results are only valid for the tested samples provided by the customer.
6. This report shall not be partially reproduced without the written permission of the laboratory.
7. Any objection shall be raised to the laboratory within 30 days after receiving the report.

--END OF REPORT--