

UGREEN

ApexSound G1

AirPlay 2 Wireless Audio Receiver

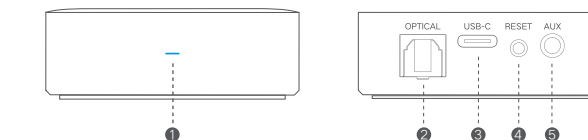
FCCC ID:2AQI5-CM539

Model: CM539 | P/N: 80664

Preface

Thank you for purchasing UGREEN products. For optimum operation, please read this manual carefully before using.

Product Overview

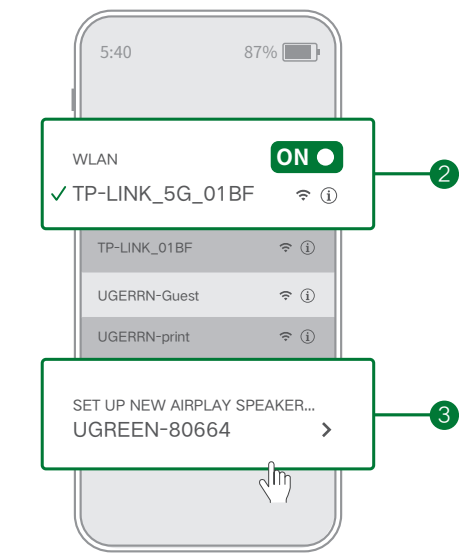


- ① LED Indicator
- ② Optical Fiber Port
- ③ USB-C Power Port
- ④ Reset Hole
- ⑤ 3.5mm Audio Port

— 1 —

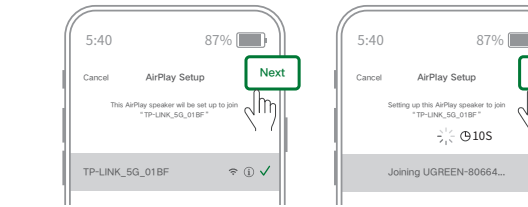
Connection

- Connect the OPTICAL and 3.5mm ports to corresponding devices through the provided cables.
Tip: When both OPTICAL and 3.5mm ports are connected, only 3.5mm audio port works by default.
- Connect to your WiFi on your Apple devices.
- Find "UGREEN-80664" on the same page and connect to it.



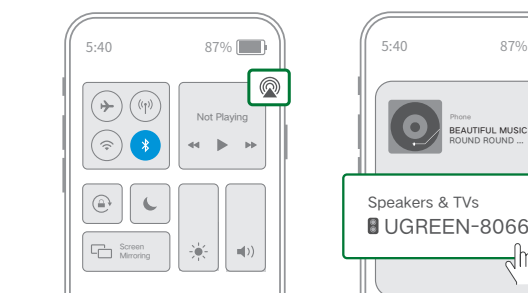
— 2 —

- Click "Next", wait for about 10 seconds, and then click "Complete" at last.



— 3 —

- In Control Center click the icon "AirPlay" and select "UGREEN-80664".



Tip

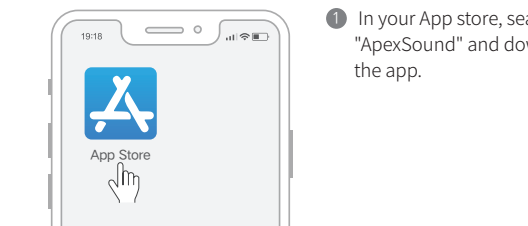
If the pairing fails/when you need to change the network, please press and hold the reset hole for 3 seconds and repeat steps from step 3 to 5.

LED Indicator

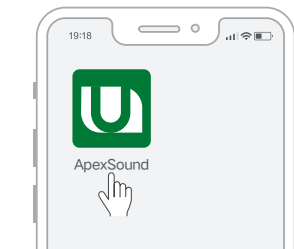
Status	Indicator
Being paired	Breathing blue
Paired	Solid blue
Failed pairing	Solid red
Resetting	Fast blinking red then off

Latency Calibration

Follow the calibration steps below if there's latency when several products are paired with one Apple device.



— 4 —



- After download, please follow the instructions to complete the calibration.
Tip: calibrate the latency range to "0ms to 100ms" on the app.

Specifications

- Model: CM539
- Output Ports: 3.5mm, OPTICAL
- WiFi Bands: 2.4G/5G
- Frequency Range: 2400-2483.5MHz, 5150-5350MHz, 5725-5850MHz
- WiFi Standard: IEEE802.11a/b/g/n/ac
- Audio Protocol: AirPlay 2
- Transmission Distance: 40 m/131.2 ft
- Compatible Systems: iOS 11.4/iPadOS 13/macOS 10.13.6 or later

— 5 —

Important WEEE Information

This symbol on the product(s) and / or accompanying documents indicates that, under the new Directive 2012/19/EU on waste electrical and electronic equipment (WEEE), product(s) used electrical and electronic equipment (WEEE) should not be mixed with general household waste. For proper treatment, recovery and recycling, please take this product(s) to designated collection points where it will be accepted free of charge.

Disposing of this product correctly will help save valuable resources and prevent any potential negative effects on human health and the environment, which could otherwise arise from inappropriate waste handling.

Please contact your local authority for further details of your nearest designated collection point.

Penalties may be applicable for incorrect disposal of this waste, in accordance with your national legislation.

For professional users in the European Union
If you wish to discard electrical and electronic equipment (EEE), please contact your dealer or supplier for further information.

For disposal in countries outside of the European Union
This symbol is only valid in the European Union (EU). If you wish to discard this product please contact your local authorities or dealer and ask for the correct method of disposal.

— 6 —

Warranty Information

A limited 2-year warranty applies to all UGREEN products purchased from UGREEN official store or authorized sellers. Please feel free to contact us if you run into any problems.

FCC Statement

This device complies with Part 15 of the FCC rules. Operation is subject to the following two conditions:
(1) this device may not cause harmful interference,
(2) this device must accept any interference received, including interference that may cause undesired operation.
Warning: Changes or modifications not expressly approved by the party responsible for compliance could void the user's authority to operate the equipment.

— 7 —

FCC Radiation Exposure Statement

This equipment complies with FCC radiation exposure limits set forth for an uncontrolled environment.

This transmitter must not be co-located or operating in conjunction with any other antenna or transmitter.

Note: This equipment has been tested and found to comply with the limits for a Class B digital device, pursuant to part 15 of the FCC Rules. These limits are designed to provide reasonable protection against harmful interference in a residential installation. This equipment generates uses and can radiate radio frequency energy and, if not installed and used in accordance with the instructions, may cause harmful interference to radio communications. However, there is no guarantee that interference will not occur in a particular installation. If this equipment does cause harmful interference to radio or television reception, which can be determined by turning the equipment off and on, the user is encouraged to try to correct the interference by one or more of the following measures:
—Reorient or relocate the receiving antenna.
—Increase the separation between the equipment and receiver.
—Connect the equipment into an outlet on a circuit different from that to which the receiver is connected.
—Consult the dealer or an experienced radio/TV technician for help.

The device has been evaluated to meet general RF exposure requirement. The device can be used in portable exposure condition without restriction. **When using the product, maintain a distance of 20cm from the body to ensure compliance with RF exposure requirements.**

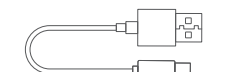
— 8 —

Package Contents

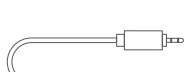


1 × AirPlay 2 Wireless Audio Receiver

1 × User Manual



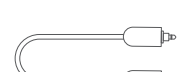
1 × USB Cable (1.5 m/4.92 ft)



1 × 3.5mm Audio Cable (1 m/3.28 ft)



1 × 3.5mm to 2RCA Audio Cable (1 m/3.28 ft)



1 × Optical Audio Cable (1 m/3.28 ft)

— 9 —