



UGREEN

AC6500 11ac Dual-Band Wireless USB Adapter

Model: CM448 | P/N: 20204

User Manual | 使用说明书 | Manual de l'utilisateur | Manual de usuario | Manual de instruções | 取扱説明書

Product Details

AC6500 Dual-Band Wireless USB Adapter (Model: CM448)

How to Work

- Remove the USB cover of the product.
- Connect the USB cable to the USB port of the product.
- Insert the USB cable into the USB port of the PC.
- Turn on the power switch of the product.
- Use the product as usual.

QR

- Hold the QR code in front of the QR scanner.
- Scan the QR code to download the driver.
- Click the "Download" button to download the driver.
- Click the "Install" button to install the driver.
- Click the "Run" button to run the driver.
- Click the "Finish" button to finish the installation.

FR

Vous devez installer le pilote sur votre ordinateur pour utiliser l'adaptateur. Cliquez sur le lien "Télécharger le pilote" ci-dessous pour télécharger le pilote et cliquez sur "Installer" pour installer le pilote. Cliquez sur "Exécuter" pour exécuter le pilote et cliquez sur "Terminer" pour terminer l'installation.

ES

Es necesario instalar el controlador en su ordenador para utilizar el adaptador. Haga clic en el enlace "Descargar controlador" a continuación para descargar el controlador y haga clic en "Instalar" para instalar el controlador. Haga clic en "Ejecutar" para ejecutar el controlador y haga clic en "Terminar" para finalizar la instalación.

DE

Bitte installieren Sie den Treiber auf Ihrem Computer, um das Adapter zu verwenden. Klicken Sie auf den Link "Treiber herunterladen" unten, um den Treiber herunterzuladen, und klicken Sie auf "Installieren", um den Treiber zu installieren. Klicken Sie auf "Ausführen", um den Treiber auszuführen, und klicken Sie auf "Fertigstellen", um die Installation abzuschließen.

RU

Для использования адаптера необходимо установить драйвер на компьютер. Нажмите на ссылку "Загрузить драйвер" ниже, чтобы скачать драйвер, и нажмите "Установить", чтобы установить драйвер. Нажмите "Выполнить", чтобы запустить драйвер, и нажмите "Готово", чтобы завершить установку.

IT

È necessario installare il driver sul computer per utilizzare l'adattatore. Cliccate sul collegamento "Scarica driver" qui sotto per scaricare il driver e cliccate su "Installa" per installare il driver. Cliccate su "Esegui" per eseguire il driver e cliccate su "Fine" per completare l'installazione.

TR

Adaptörü kullanmak için bilgisayara sürücüyü yüklemelisiniz. Aşağıdaki bağlantıya tıklayarak sürücüyü indirin ve "Yükle" butonuna tıklayarak sürücüyü yükleyin. Sürücüyü çalıştırmak için "Çalıştır" butonuna tıklayın ve kurulumu tamamlamak için "Bitir" butonuna tıklayın.

TH

จำเป็นต้องติดตั้งไดรเวอร์บนคอมพิวเตอร์เพื่อใช้ตัวส่งสัญญาณไร้สาย. คลิกที่ลิงก์ "ดาวน์โหลดไดรเวอร์" ด้านล่างเพื่อดาวน์โหลดไดรเวอร์ และคลิก "ติดตั้ง" เพื่อติดตั้งไดรเวอร์. คลิก "ดำเนินการต่อ" เพื่อดำเนินการไดรเวอร์ และคลิก "เสร็จสิ้น" เพื่อเสร็จสิ้นการติดตั้ง.

AR

Para utilizar el adaptador es necesario instalar el controlador en el ordenador. Haga clic en el enlace "Descargar controlador" a continuación para descargar el controlador y haga clic en "Instalar" para instalar el controlador. Haga clic en "Ejecutar" para ejecutar el controlador y haga clic en "Terminar" para finalizar la instalación.

EN

You need to install the driver on your computer to use the adapter. Click on the link "Download driver" below to download the driver and click "Install" to install the driver. Click "Run" to run the driver and click "Finish" to finish the installation.

FR

Vous devez installer le pilote sur votre ordinateur pour utiliser l'adaptateur. Cliquez sur le lien "Télécharger le pilote" ci-dessous pour télécharger le pilote et cliquez sur "Installer" pour installer le pilote. Cliquez sur "Exécuter" pour exécuter le pilote et cliquez sur "Terminer" pour terminer l'installation.

ES

Es necesario instalar el controlador en su ordenador para utilizar el adaptador. Haga clic en el enlace "Descargar controlador" a continuación para descargar el controlador y haga clic en "Instalar" para instalar el controlador. Haga clic en "Ejecutar" para ejecutar el controlador y haga clic en "Terminar" para finalizar la instalación.

DE

Bitte installieren Sie den Treiber auf Ihrem Computer, um das Adapter zu verwenden. Klicken Sie auf den Link "Treiber herunterladen" unten, um den Treiber herunterzuladen, und klicken Sie auf "Installieren", um den Treiber zu installieren. Klicken Sie auf "Ausführen", um den Treiber auszuführen, und klicken Sie auf "Fertigstellen", um die Installation abzuschließen.

RU

Для использования адаптера необходимо установить драйвер на компьютер. Нажмите на ссылку "Загрузить драйвер" ниже, чтобы скачать драйвер, и нажмите "Установить", чтобы установить драйвер. Нажмите "Выполнить", чтобы запустить драйвер, и нажмите "Готово", чтобы завершить установку.

IT

È necessario installare il driver sul computer per utilizzare l'adattatore. Cliccate sul collegamento "Scarica driver" qui sotto per scaricare il driver e cliccate su "Installa" per installare il driver. Cliccate su "Esegui" per eseguire il driver e cliccate su "Fine" per completare l'installazione.

TR

Adaptörü kullanmak için bilgisayara sürücüyü yüklemelisiniz. Aşağıdaki bağlantıya tıklayarak sürücüyü indirin ve "Yükle" butonuna tıklayarak sürücüyü yükleyin. Sürücüyü çalıştırmak için "Çalıştır" butonuna tıklayın ve kurulumu tamamlamak için "Bitir" butonuna tıklayın.

TH

จำเป็นต้องติดตั้งไดรเวอร์บนคอมพิวเตอร์เพื่อใช้ตัวส่งสัญญาณไร้สาย. คลิกที่ลิงก์ "ดาวน์โหลดไดรเวอร์" ด้านล่างเพื่อดาวน์โหลดไดรเวอร์ และคลิก "ติดตั้ง" เพื่อติดตั้งไดรเวอร์. คลิก "ดำเนินการต่อ" เพื่อดำเนินการไดรเวอร์ และคลิก "เสร็จสิ้น" เพื่อเสร็จสิ้นการติดตั้ง.

AR

Para utilizar el adaptador es necesario instalar el controlador en el ordenador. Haga clic en el enlace "Descargar controlador" a continuación para descargar el controlador y haga clic en "Instalar" para instalar el controlador. Haga clic en "Ejecutar" para ejecutar el controlador y haga clic en "Terminar" para finalizar la instalación.

Specifications

Model	CM448
Version	V1.0
Material	PC
Color	Black
Weight	~10g
Dimensions	~35x15x8mm
Interface	USB 2.0
Frequency	2.4GHz / 5GHz
Power	~100mW
Compliance	CE, FCC, RoHS
Warranty	1 Year

Notes

1. Please keep the products in dry conditions to avoid moisture damage.

2. Please do not use the product if you are allergic to the materials used in the product.

3. Please do not use the product if you are using other wireless devices at the same time.

4. Please do not use the product if you are using other wireless devices at the same time.

5. Please do not use the product if you are using other wireless devices at the same time.

Important WEEE Information

This product is not to be disposed of as general waste. It should be disposed of as electronic waste (WEEE) in accordance with local regulations. Please refer to the WEEE disposal instructions on the back of the product for more information.

Warranty Information

The product is warranted for 1 year against manufacturing defects. This warranty is void if the product has been modified, damaged, or misused. Please refer to the warranty policy on the back of the product for more information.

FCC Statement

This device complies with the FCC Part 15.207 Class B digital device limits. Operation is subject to the following conditions: (1) the device may not cause harmful interference, and (2) the device must accept any interference that may occur, including interference from authorized radio communication services.

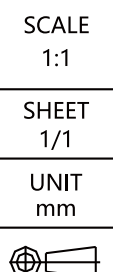
CE Mark Warning

The CE mark on this product indicates that it conforms to the requirements of the CE mark. It is the responsibility of the manufacturer to ensure that the product complies with the CE mark requirements.

- 备注:
1. 材质: 70g书写纸
 2. 印刷颜色: 1C+1专
 3. 展开尺寸: 650x80mm
 4. 成品尺寸: 65x80mm
 5. 成型工艺: 风琴折
 6. 长宽公差: ±1mm
 7. 符合ROHS标准



SELECT	TOL	V							SCALE					
Dim	A	B	C	EPS	EPE	EPP	BAG	CTN	1:1					
				0~6	0.05	0.05	0.10	0.20						
				6~30	0.10	0.15	0.20	0.50		0.50	0.50	3.00	0.20	
				30~120	0.15	0.20	0.30	0.50		0.50	0.50	5.00	1.00	0.25
				120~300	0.20	0.30	0.40	1.00		1.00	1.00	10.00	1.00	0.30
				300~450	0.25	0.40	0.50	2.00		2.00	2.00	15.00	2.00	0.50
450~600	0.30	0.50	0.60	3.00	3.00	3.00	20.00	3.00	0.80					
DRAFT TOLERANCE			±0.20°			CRITICAL DIM MARK			*					



UGREEN 绿联 深圳市绿联科技有限公司

物料名称: CM448 20204 说明书

产品名称	料号	项目工程师	核准
无线网卡	0104.0203.BB.20204.00	吴晓行	袁蓉辉