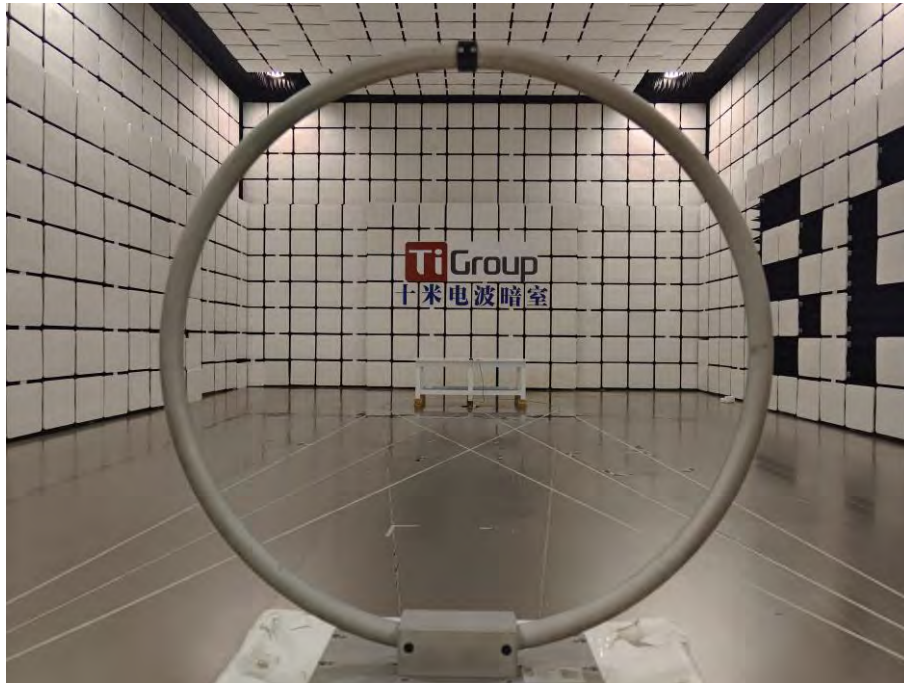


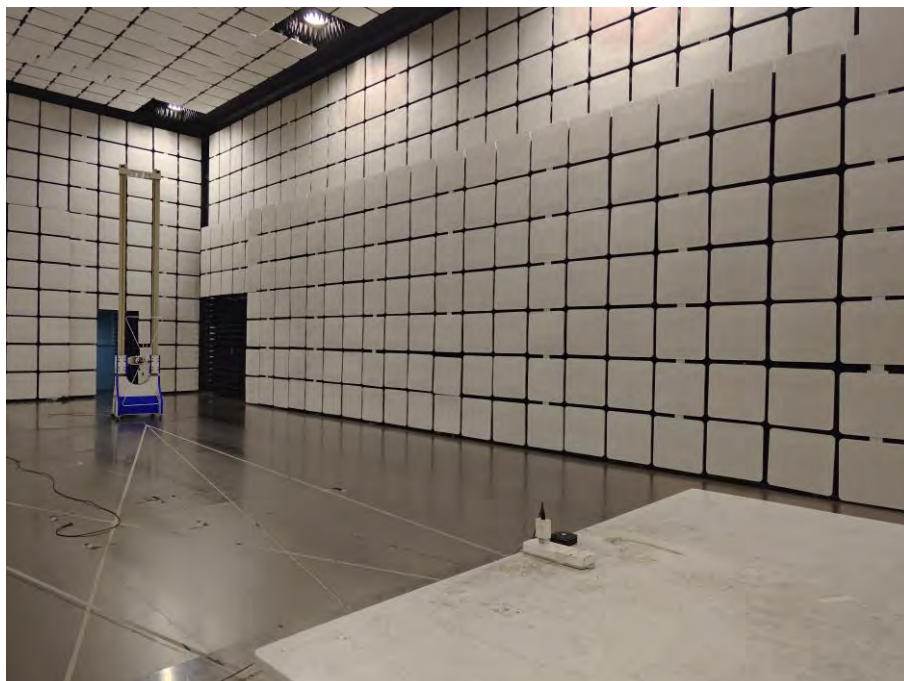
ANNEX A TEST SETUP PHOTOS

1 Radiated Test Photo

Below 30MHz



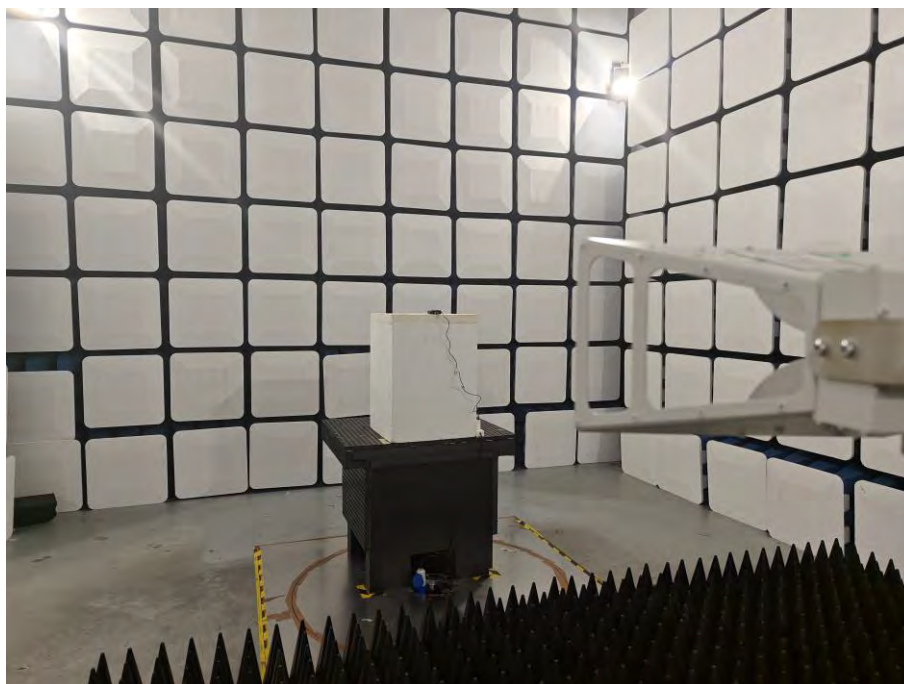
30MHz-1GHz



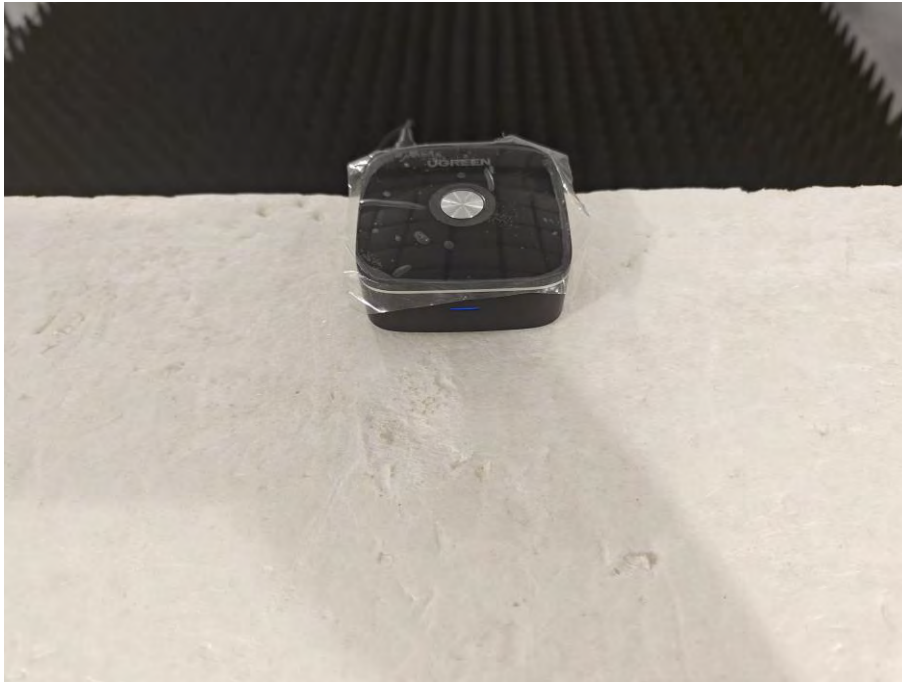
Close-up



Above 1GHz



Close-up



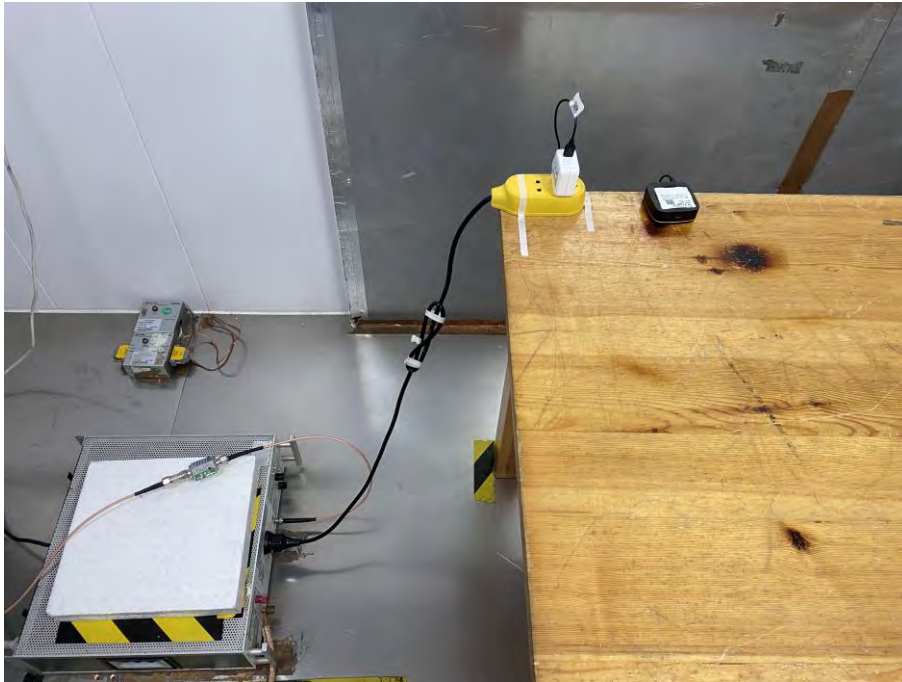
2 Conducted Test Photo

Conducted Test-BT



3 Conducted Emissions

Test Photo 1



Test Photo 2



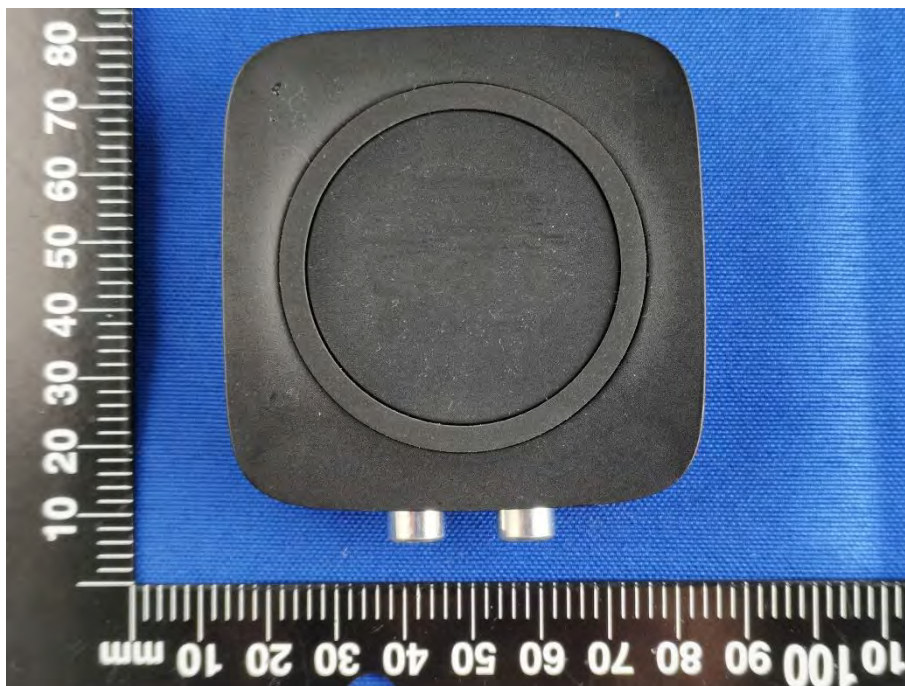
ANNEX B EUT EXTERNAL PHOTOS

CM123

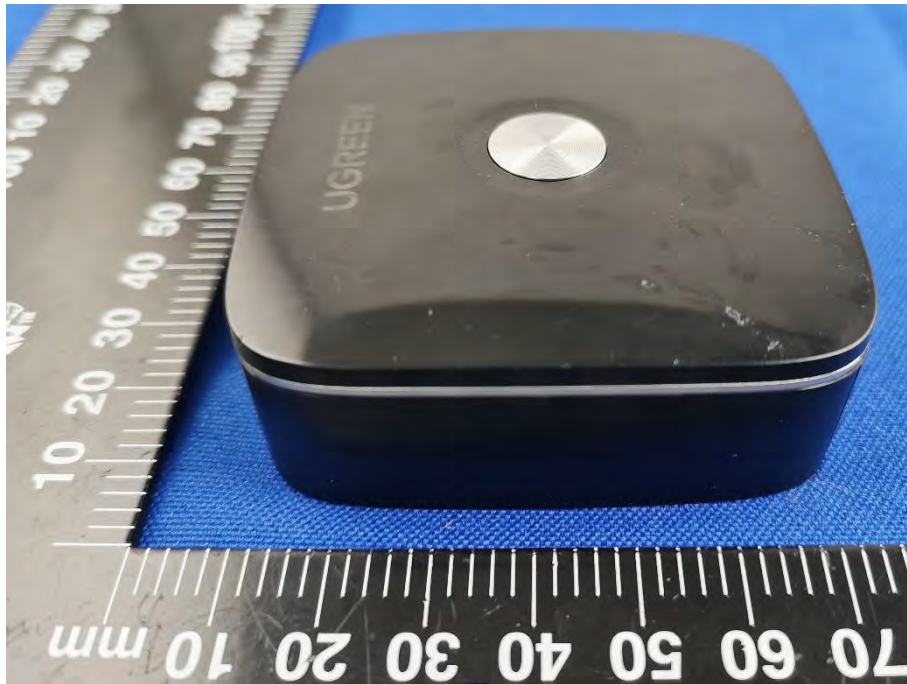
FRONT VIEW OF EUT



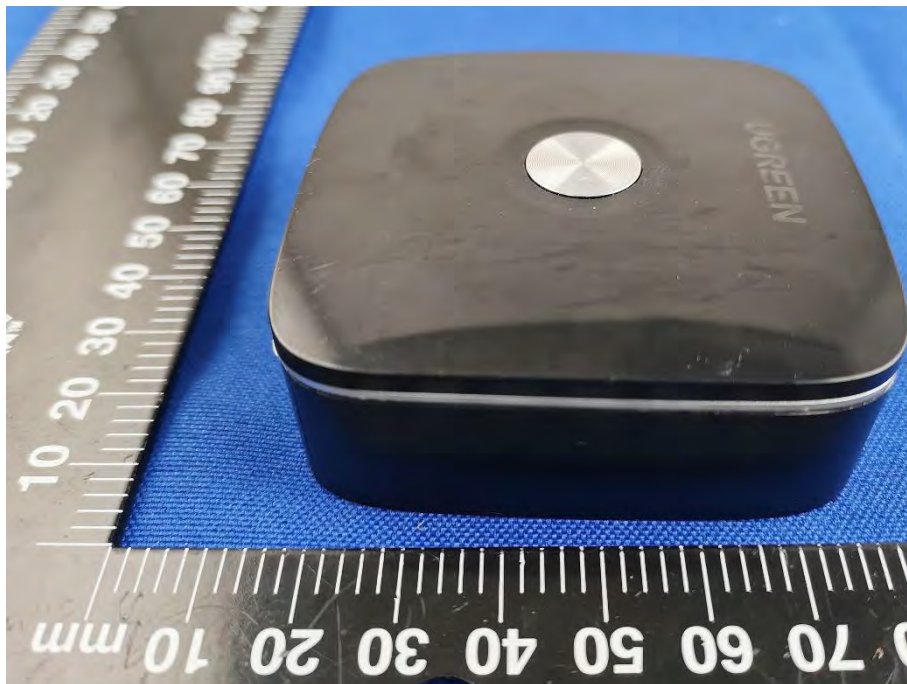
REAR VIEW OF EUT



LEFT VIEW OF EUT



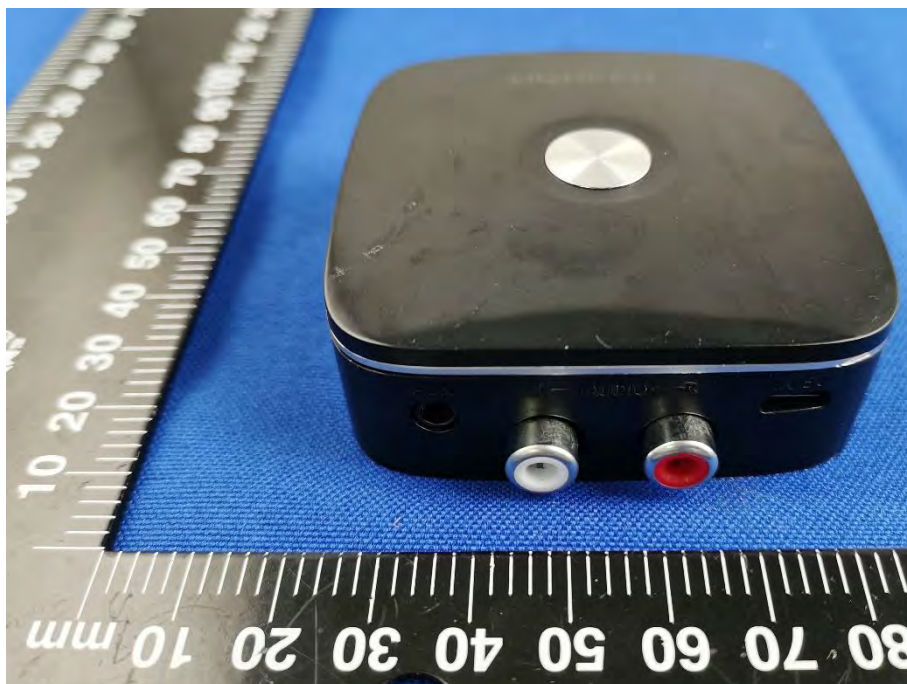
RIGHT VIEW OF EUT



TOP VIEW OF EUT



BOTTOM VIEW OF EUT

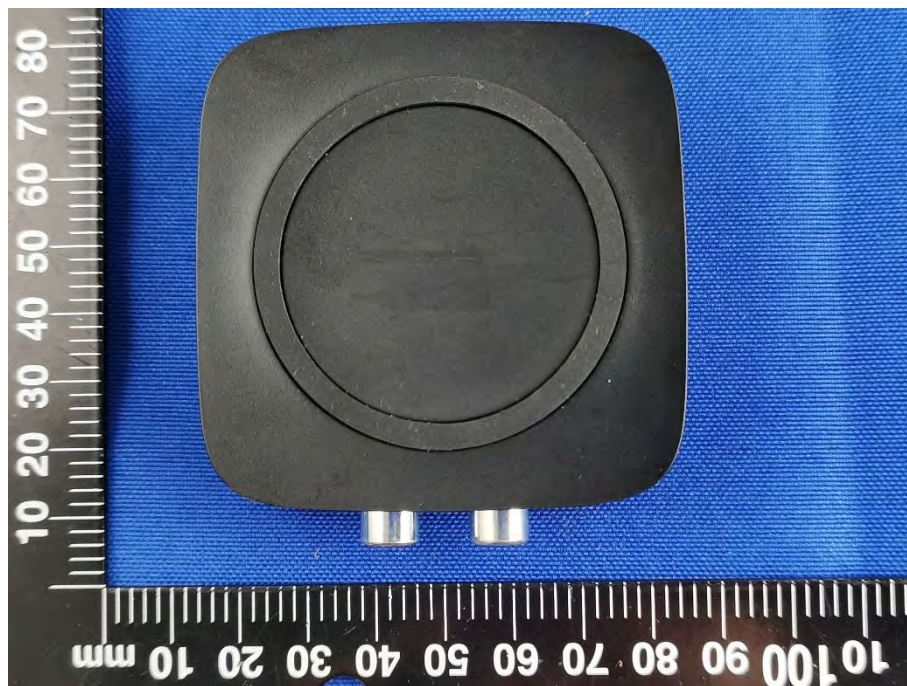


10399

FRONT VIEW OF EUT



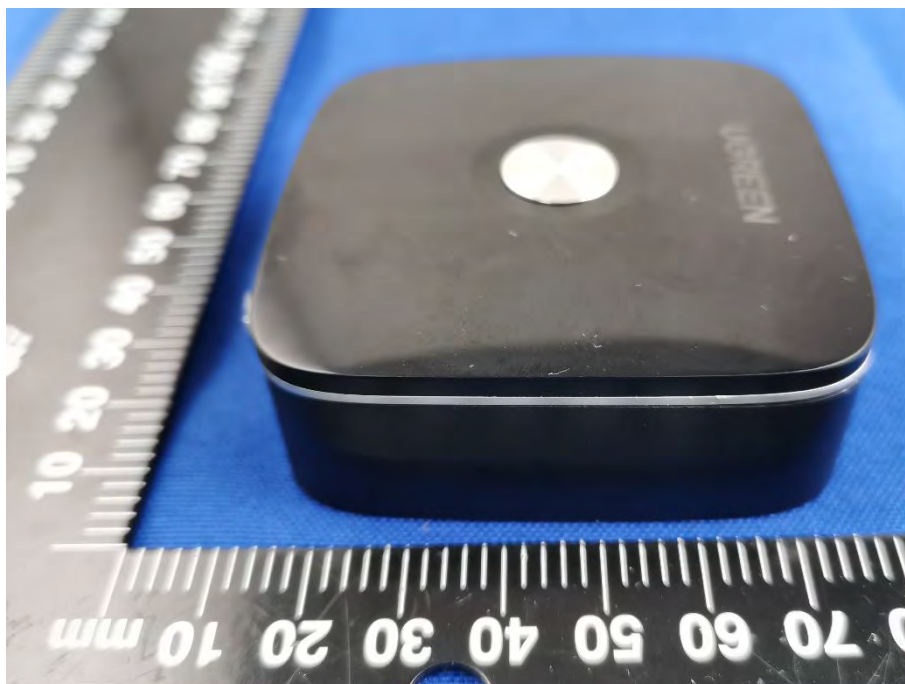
REAR VIEW OF EUT



LEFT VIEW OF EUT



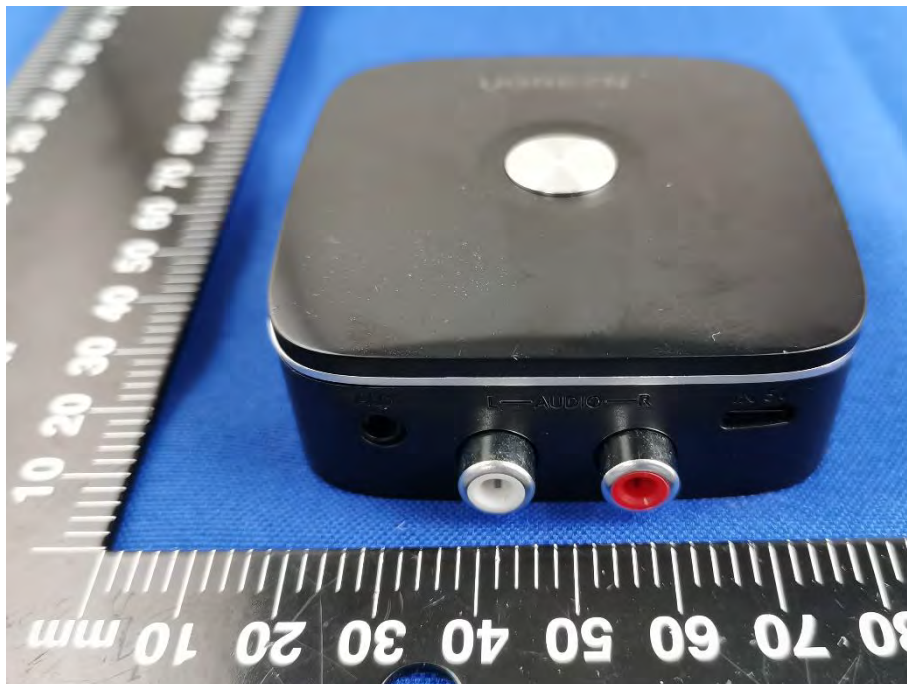
RIGHT VIEW OF EUT



TOP VIEW OF EUT



BOTTOM VIEW OF EUT



Accessory-USB Cable



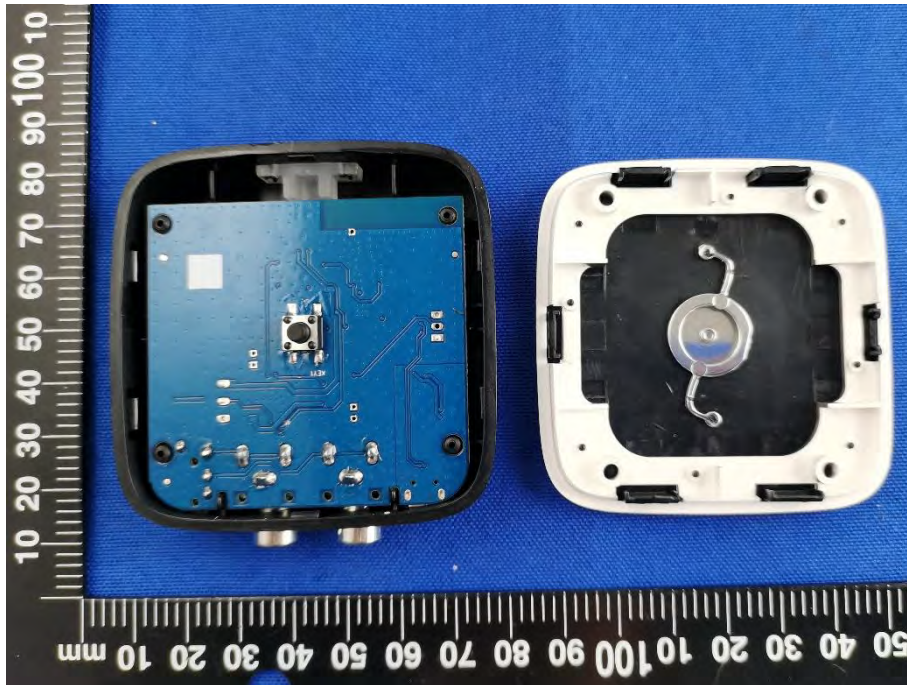
Accessory-Audio Cable



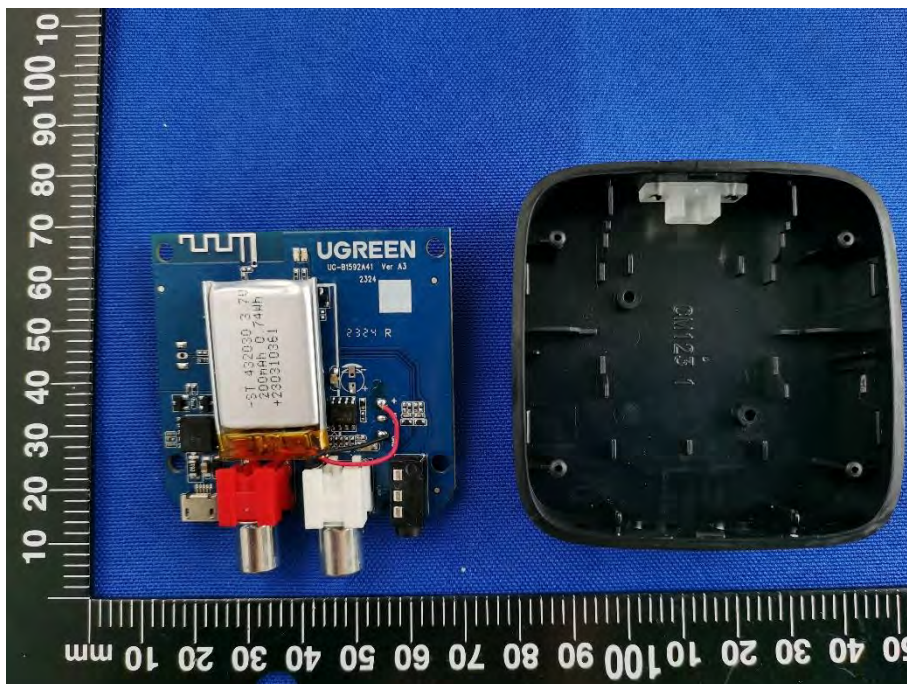
ANNEX C EUT INTERNAL PHOTOS

CM123

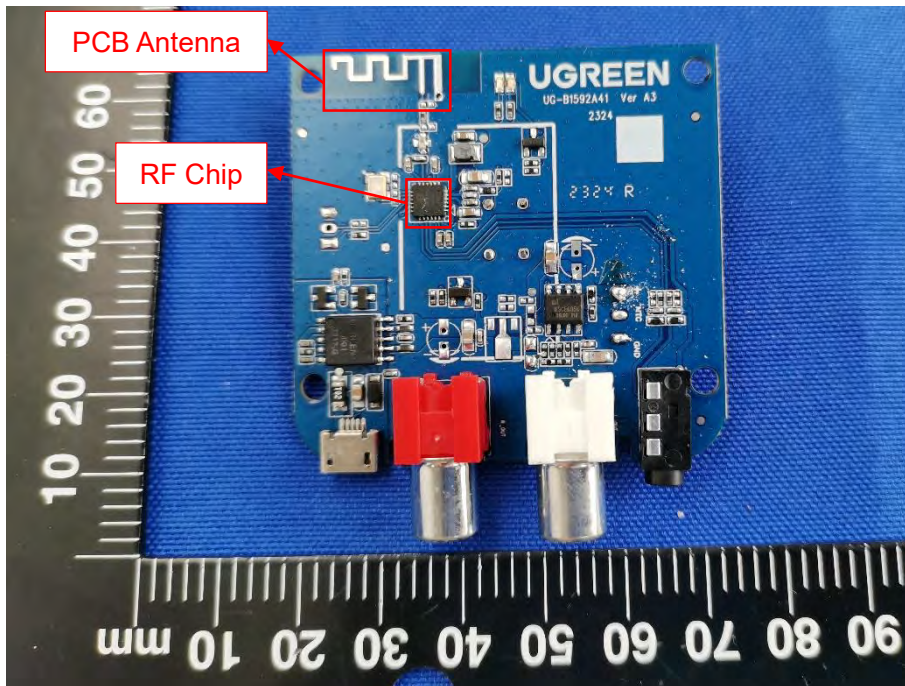
EUT UNCOVER VIEW 1



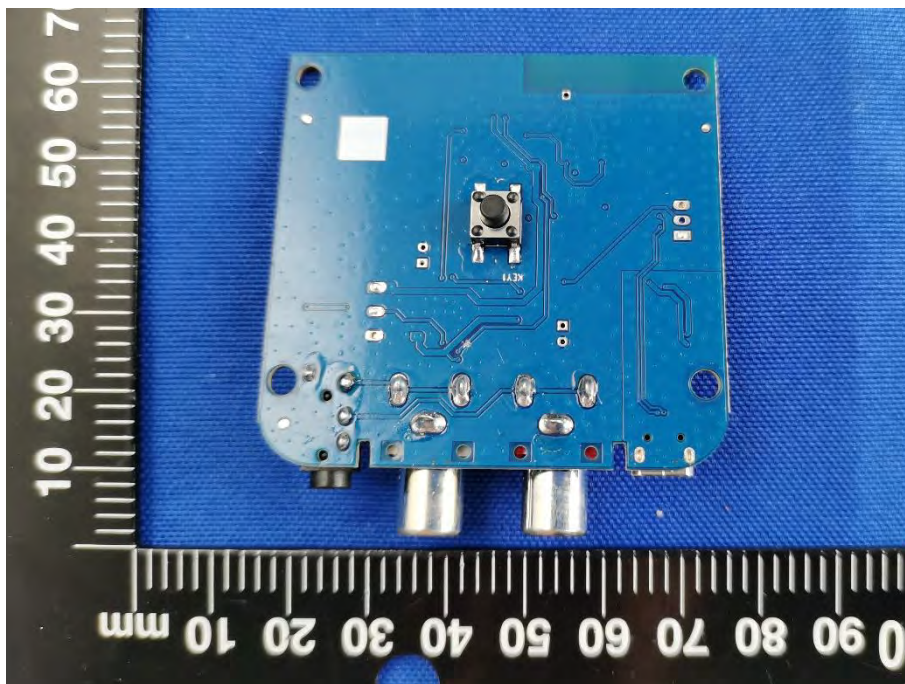
EUT UNCOVER VIEW 2



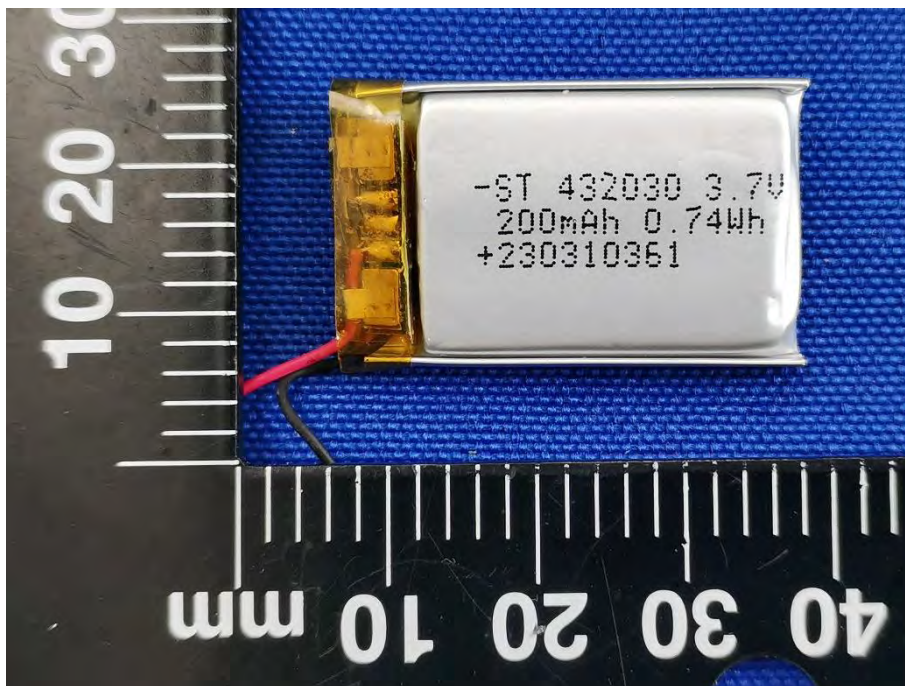
MAIN BOARD TOP VIEW



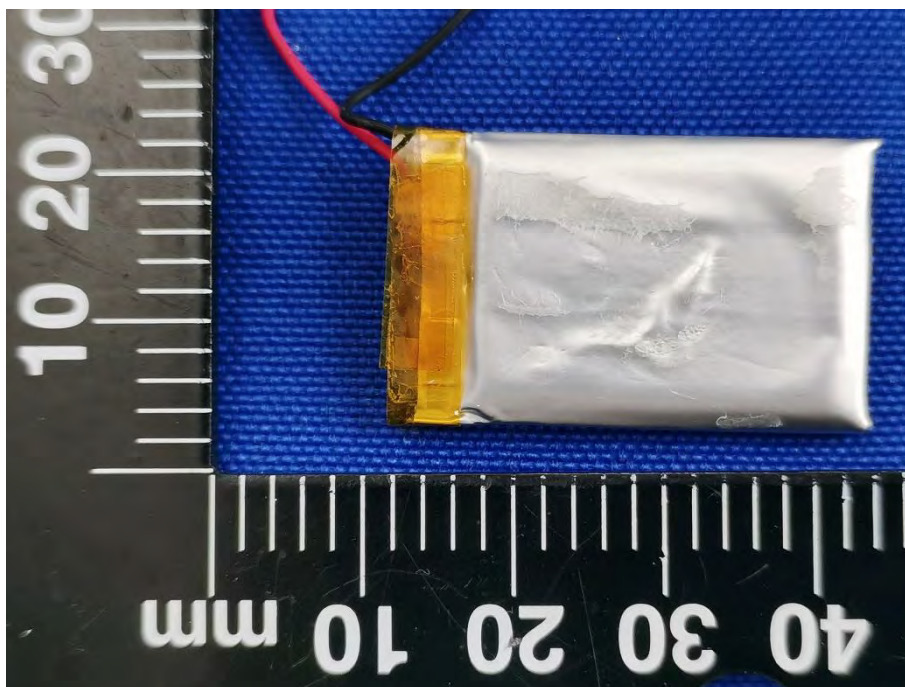
MAIN BOARD REAR VIEW



BATTERY (FRONT)

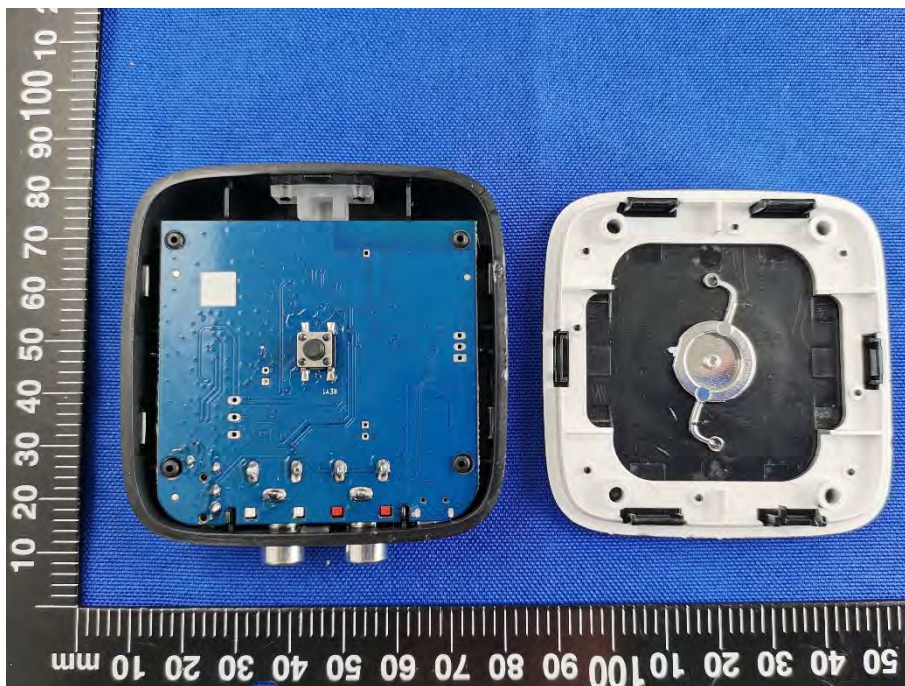


BATTERY (REAR)

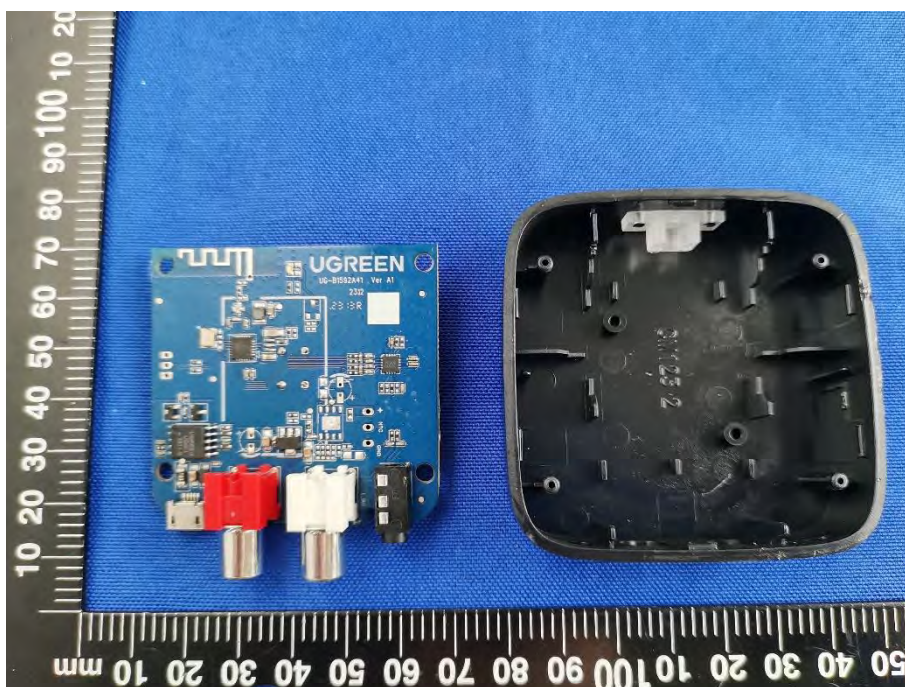


10399

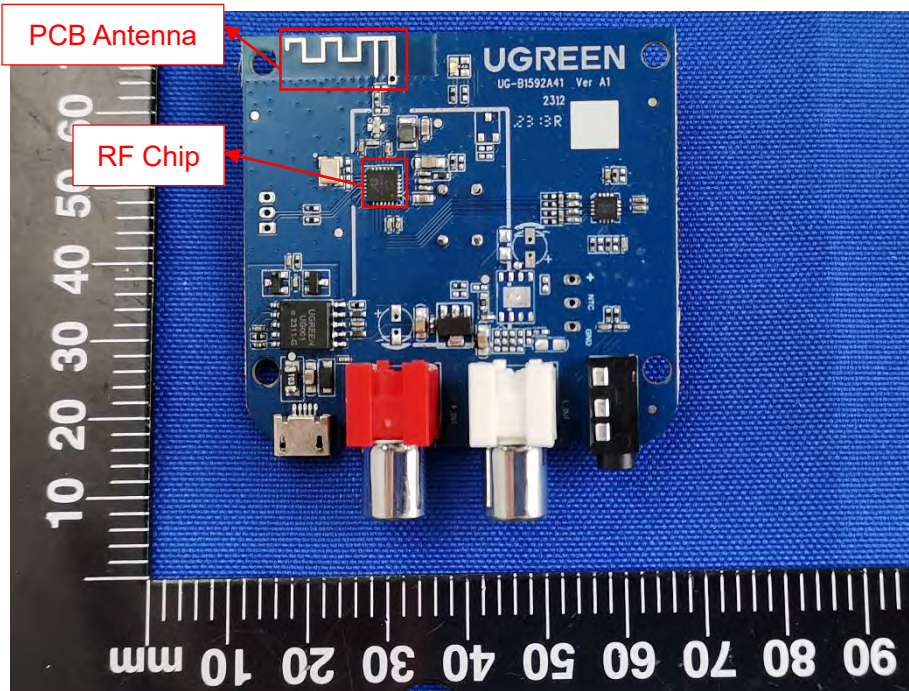
EUT UNCOVER VIEW 1



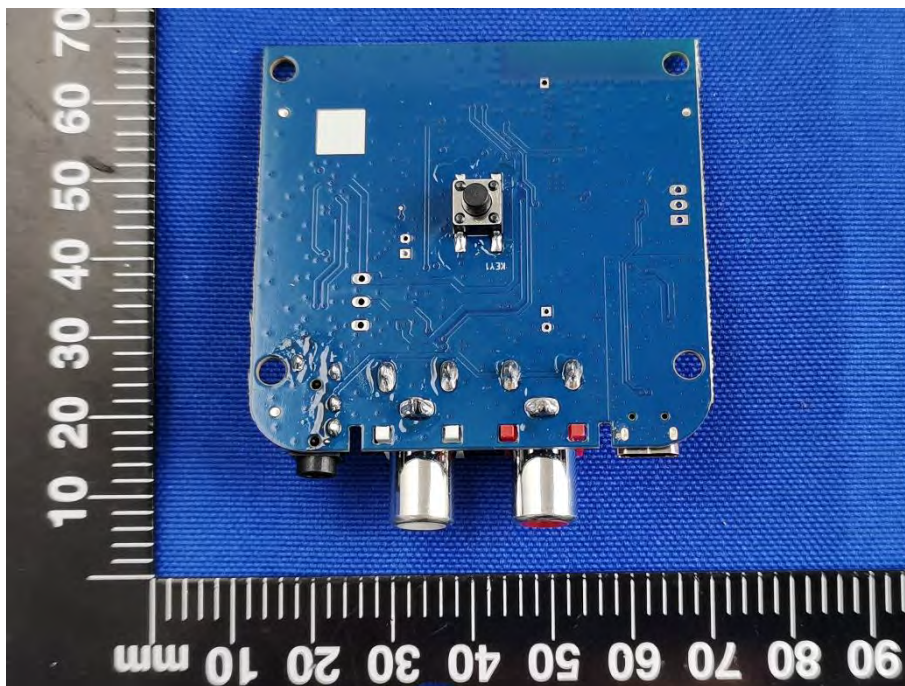
EUT UNCOVER VIEW 2



MAIN BOARD TOP VIEW



MAIN BOARD REAR VIEW



Statement

1. The laboratory guarantees the scientificity, accuracy and impartiality of the test, and is responsible for all the information in the report, except the information provided by the customer. The customer is responsible for the impact of the information provided on the validity of the results.
2. The report without China inspection body and laboratory Mandatory Approval (CMA) mark has no effect of proving to the society.
3. For the report with CNAS mark or A2LA mark, the items marked with "☆" are not within the accredited scope.
4. This report is invalid if it is altered, without the signature of the testing and approval personnel, or without the "inspection and testing dedicated stamp" or test report stamp.
5. The test data and results are only valid for the tested samples provided by the customer.
6. This report shall not be partially reproduced without the written permission of the laboratory.
7. Any objection shall be raised to the laboratory within 30 days after receiving the report.

--END OF REPORT--