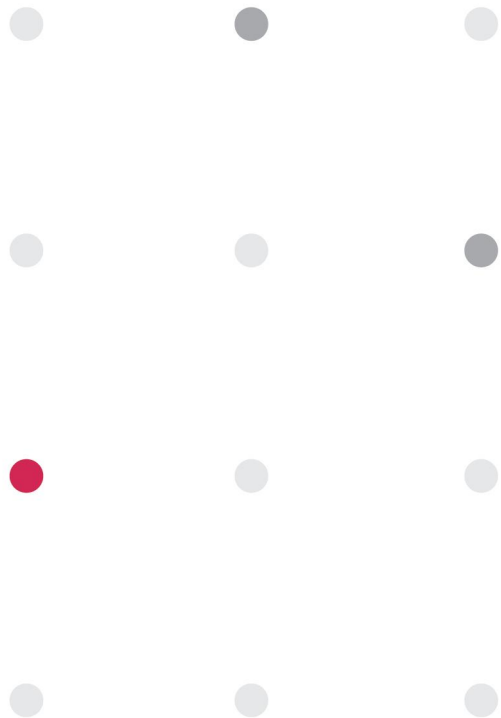


PSA

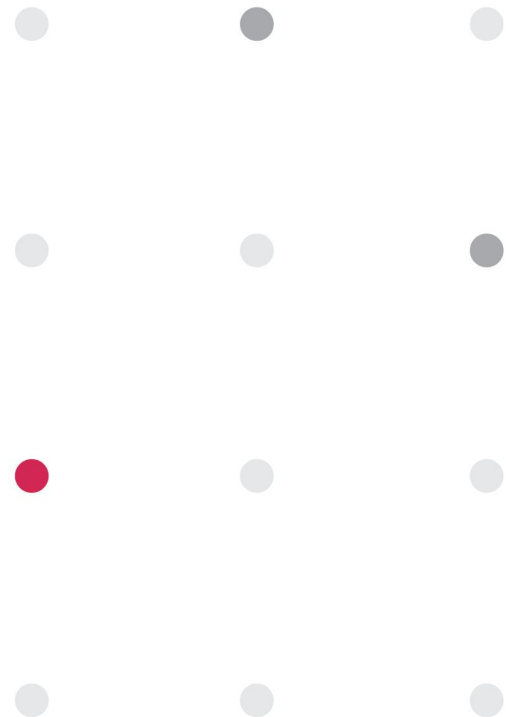
# 佳邦科技股份有限公司

INPAQ TECHNOLOGY CO., LTD.

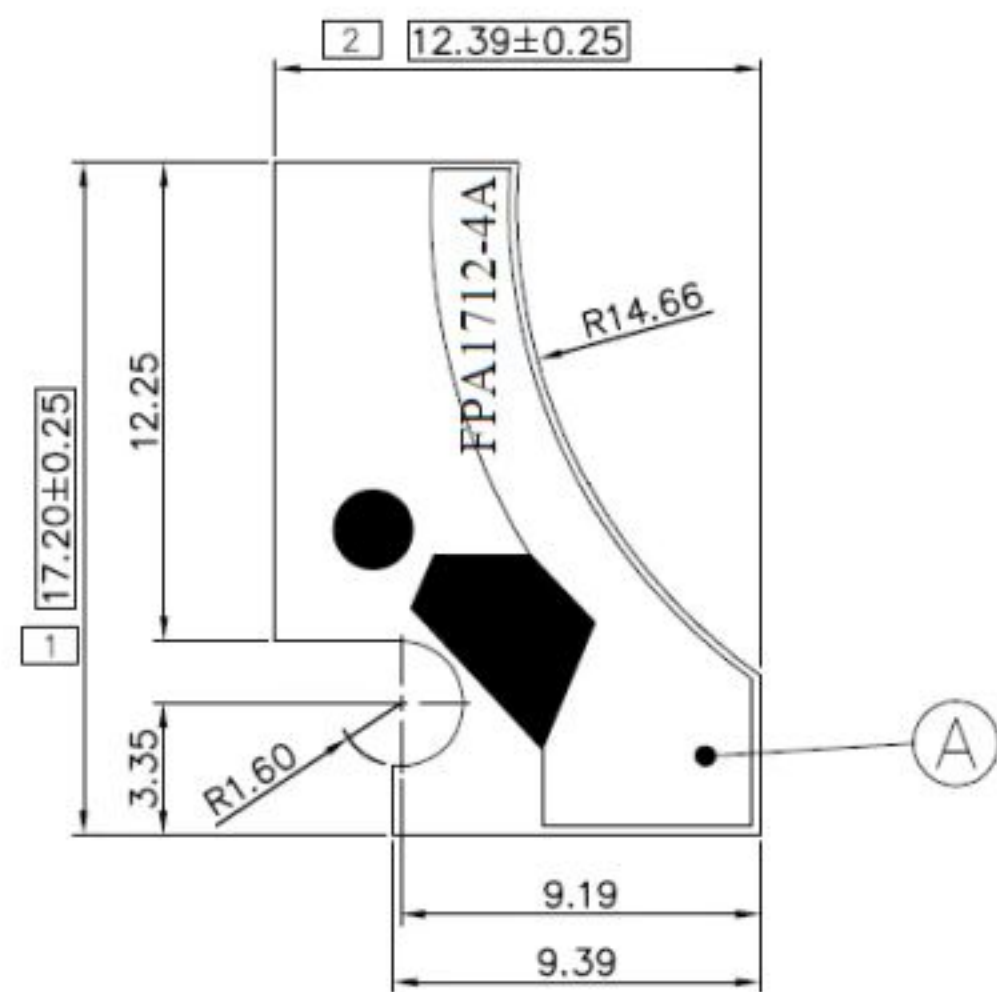


PSA

PASSIVE SYSTEM ALLIANCE  
INPAQ TECHNOLOGY CO., LTD.



Front  
View



Back  
View



# 东莞天翼-KH176I

Presented by

Junny

2024/ 06/ 28



Version	Date	Description	Author
V01	2024/06/28	New Release	Junny

# OUTLINE

## 1. Measurement Information

### 1.1 Experimental Setup

### 1.2 Antenna Solution Detail

## 2. Antenna Characteristics

### 2.1 S-Parameter

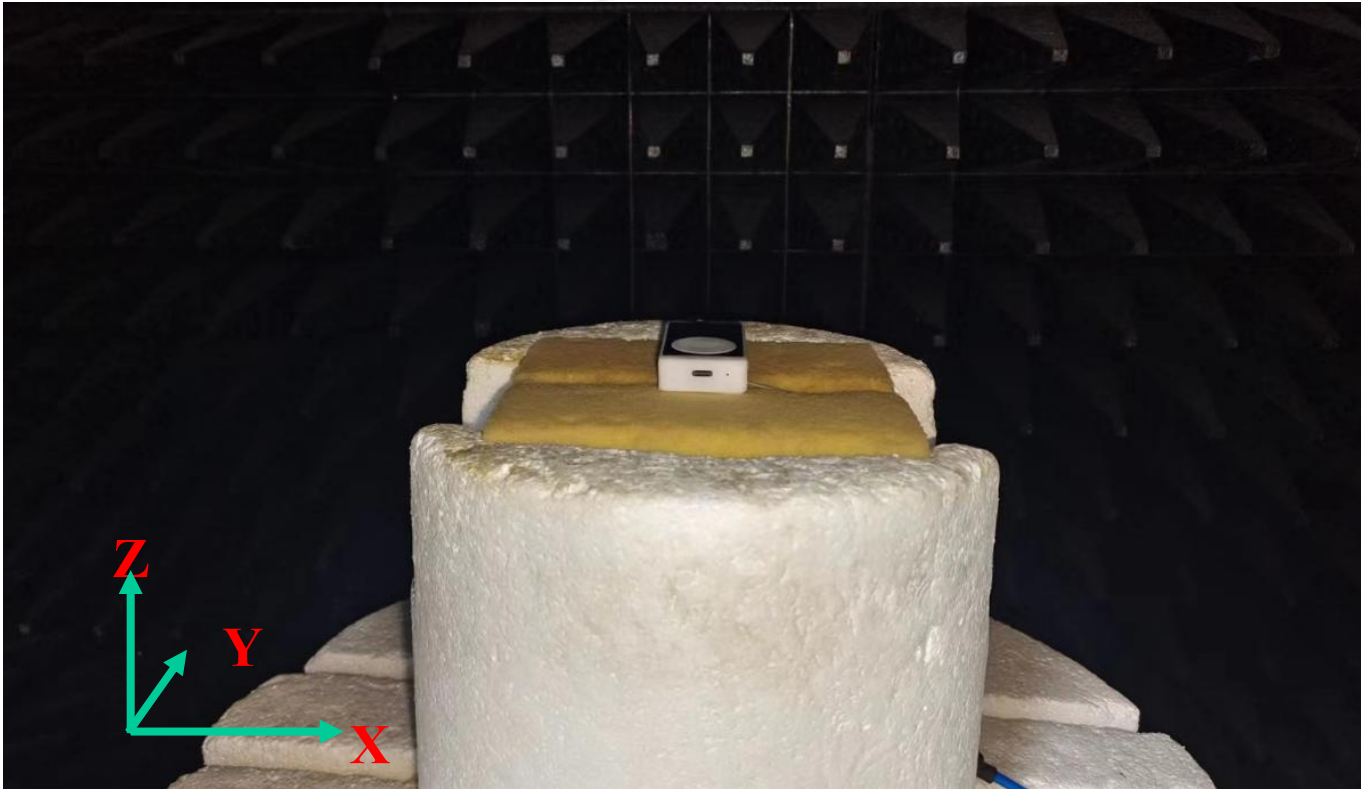
### 2.2 Antenna Efficiency and Peak Gain

### 2.3 3 views of antenna & 2D Radiation Patterns

## 3. Summary

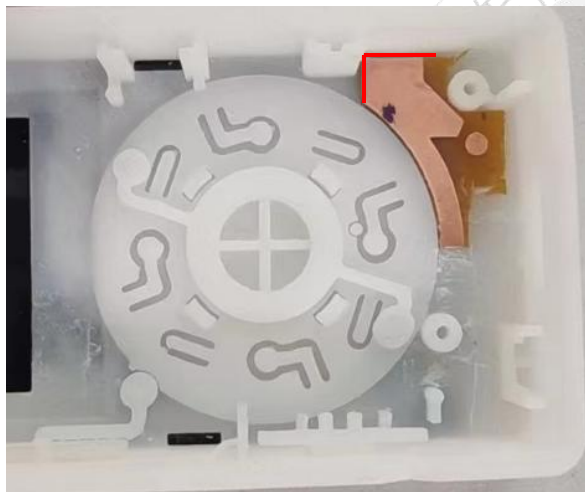
# 1. Measurement Information

## 1.1 Experimental Setup



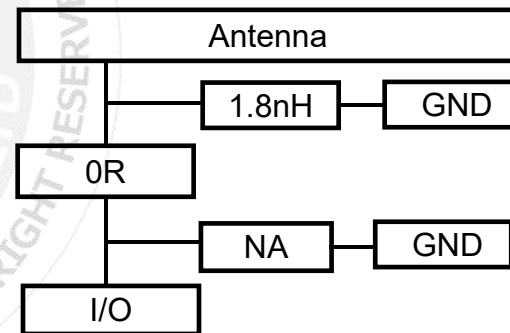
# 1. Measurement Information

## 1.2 Antenna Solution Detail



	對應料號
0 ohm	WR02X000PAL
1.8nH	WLCM0603Z0B1N8TB

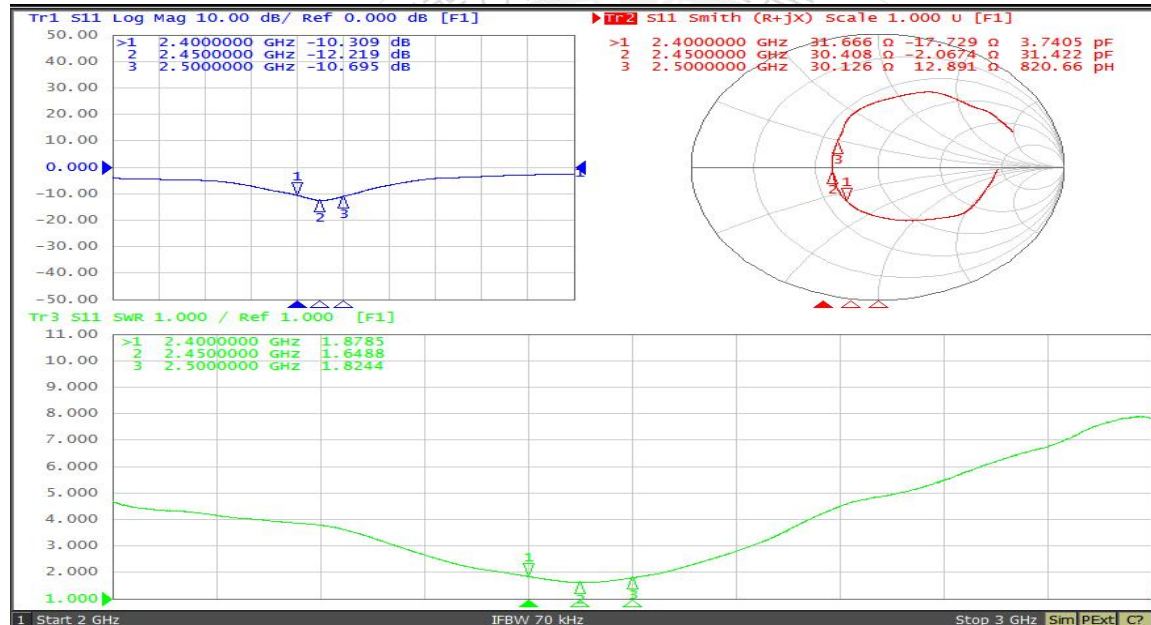
### Matching values





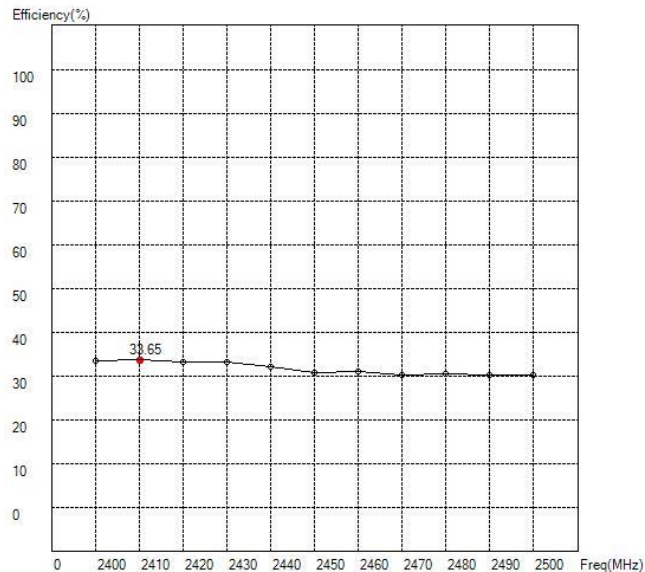
## 2. Antenna Characteristics

### 2.1 S-Parameter

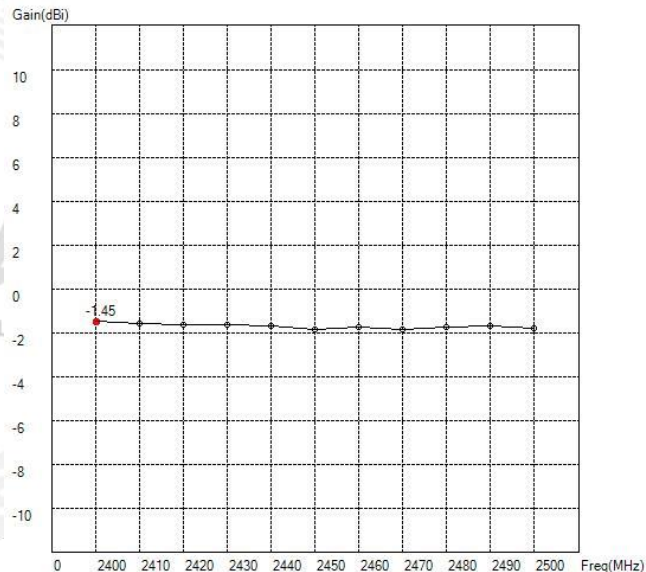


## 2. Antenna Characteristics

### 2.2 Antenna Efficiency and Peak Gain



Maximum Efficiency at 2410MHz : 33.65%



Maximum Peak Gain at 2400MHz : -1.45 dBi

## 2. Antenna Characteristics

### 2.2 Antenna Efficiency and Peak Gain

	ANT	
Frequency (GHz)	Efficiency (%)	Peak gain (dBi)
2.4	33.43	-1.45
2.45	30.72	-1.84
2.5	30.2	-1.79

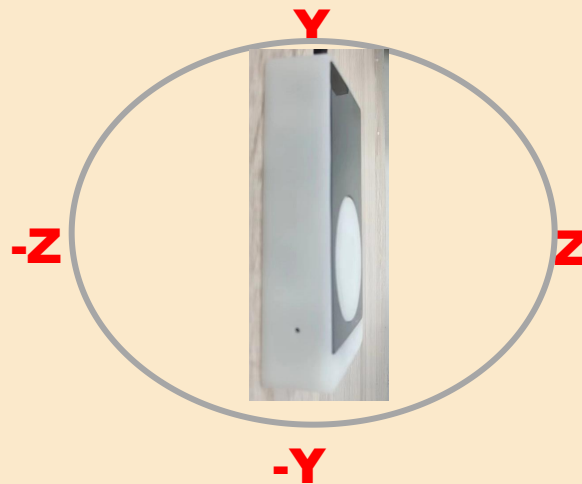
## 2. Antenna Characteristics

### 2.3 3 views of antenna

X-Z plane



Y-Z plane

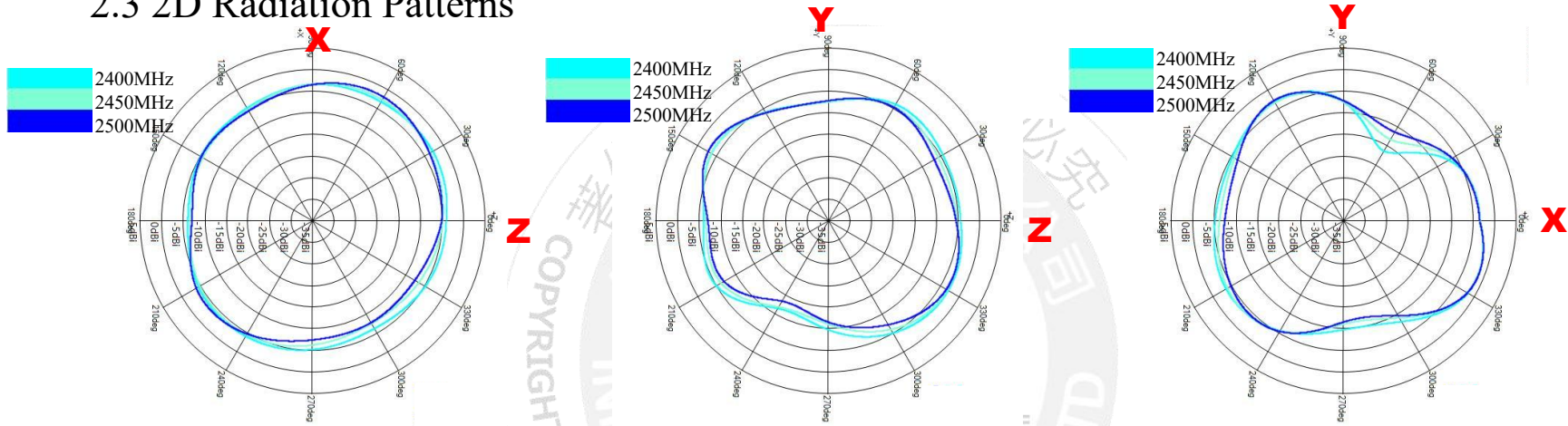


X-Y plane



## 2. Antenna Characteristics

### 2.3 2D Radiation Patterns

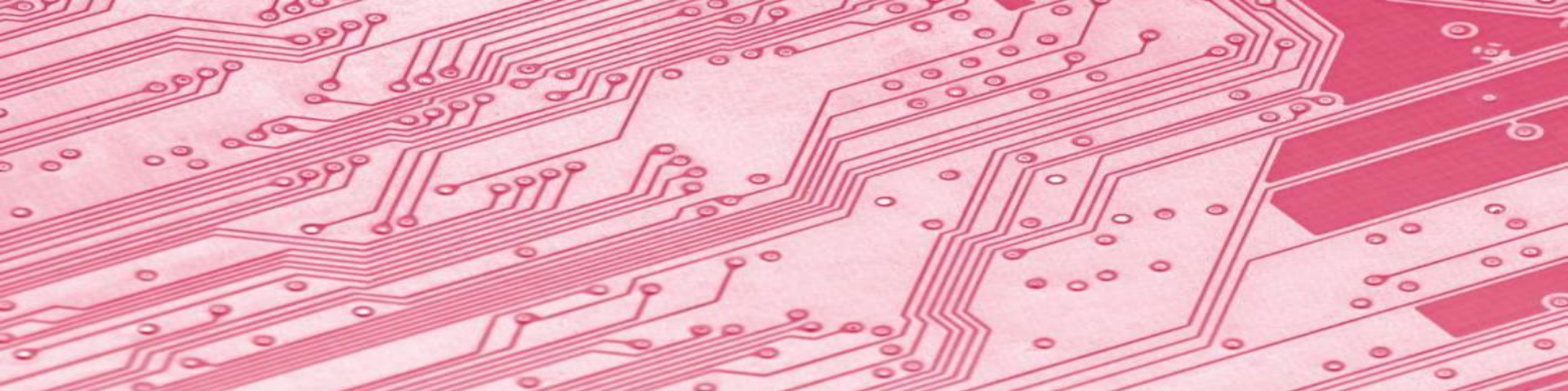


	ZX plane		ZY plane		XY plane	
Frequency [MHz]	Max Value [dBi]	Average [dBi]	Max Value [dBi]	Average [dBi]	Max Value [dBi]	Average [dBi]
2400	-2.70	-4.13	-2.85	-5.23	-1.45	-5.21
2450	-2.54	-4.64	-3.08	-5.95	-1.84	-5.41
2500	-1.83	-4.70	-2.84	-6.35	-1.79	-5.53

### 3. Summary

- The performance of antennas is shown in table

	ANT
Maximum Efficiency (%)	33.65
Maximum Gain (dBi)	-1.45



# Title for Image (above image could be replaced)

## Content Details

PASSIVE SYSTEM ALLIANCE  
INPAQ TECHNOLOGY CO., LTD.

WE CONNECT WE PROTECT **PSA**



# Thank you

本資料均屬機密，僅供指定之收件人使用，未經寄件人許可不得揭露、複製或散佈本信件。

This message and any attachments are confidential and may be legally privileged. Any unauthorized review, use or distribution by anyone other than the intended recipient is strictly prohibited. If you are not the intended recipient, please immediately notify the sender, completely delete this documents, and destroy all copies. Your cooperation will be highly appreciated.