



Report No.: EA21080104F08001

1 of 31

**ELECTROMAGNETIC EMISSIONS COMPLIANCE REPORT
INTENTIONAL RADIATOR CERTIFICATION TO
FCC PART 15 SUBPART C REQUIREMENT**

OF

Magnetic Wireless Module

Model No.: CD144, 60709

Trademark: UGREEN

FCC ID: 2AQI5-60709

Report No.: EA21080104F08001

Issue Date: Sept. 09, 2021

Prepared for

Ugreen Group Limited

**UGREEN Building, Longcheng Industrial Park Longguanxi Road,
Longhua ShenZhen, China**

Prepared by

Dong Guan Anci Electronic Technology Co., Ltd.

**1-2 Floor, Building A, No.11, Headquarters 2 Road, Songshan, Lake
Hi-tech Industrial Development Zone, Dongguan City, Guangdong Pr.,
China.**

**This report shall not be reproduced, except in full, without the written approval of
Dong Guan Anci Electronic Technology Co., Ltd.**



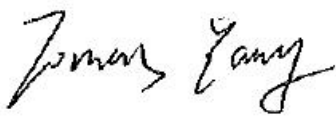
VERIFICATION OF COMPLIANCE


Applicant:	Ugreen Group Limited UGREEN Building,Longcheng Industrial Park Longguanxi Road,Longhua ShenZhen,China
Manufacturer:	Ugreen Group Limited UGREEN Building,Longcheng Industrial Park Longguanxi Road,Longhua ShenZhen,China
Product Description:	Magnetic Wireless Module
Trade Mark:	UGREEN
Model Number:	CD144, 60709 (All models are the same except the model name is different, we choose model: CD144 for all tests)

We hereby certify that:

The above equipment was tested by Dong Guan Anci Electronic Technology Co., Ltd. The test data, data evaluation, test procedures, and equipment configurations shown in this report were made in accordance with the procedures given in ANSI C63.10-2013 and the energy emitted by the sample EUT tested as described in this report is in compliance with conducted and radiated emission limits of FCC Rules Part 15.209(2020).

Date of Test : Sept. 02, 2021 to Sept. 08, 2021

Prepared by : 
Tomas Yang/Supervisor

Reviewer &
Authorized Signer : 
Alan He/Manager



Modified Information

Version	Summary	Revision Date	Report No.
Ver.1.0	Original Report	/	EA21080104F08001



Table of Contents

1 GENERAL INFORMATION.....	5
1.1 PRODUCT DESCRIPTION.....	5
1.2 RELATED SUBMITTAL(S) / GRANT(S).....	6
1.3 TEST METHODOLOGY.....	6
1.4 SPECIAL ACCESSORIES.....	6
1.5 EQUIPMENT MODIFICATIONS.....	6
1.6 TEST FACILITY.....	6
2 SYSTEM TEST CONFIGURATION.....	7
2.1 EUT CONFIGURATION.....	7
2.2 EUT EXERCISE.....	7
2.3 TEST PROCEDURE.....	7
2.4 CONFIGURATION OF TESTED SYSTEM.....	8
3 SUMMARY OF TEST RESULTS.....	8
4 TEST SYSTEM UNCERTAINTY.....	9
5 CONDUCTED EMISSIONS TEST.....	10
5.1 MEASUREMENT PROCEDURE.....	10
5.2 TEST SET-UP (BLOCK DIAGRAM OF CONFIGURATION).....	10
5.3 MEASUREMENT EQUIPMENT USED.....	10
5.4 CONDUCTED EMISSION LIMIT.....	10
5.5 MEASUREMENT RESULT.....	11
5.6 CONDUCTED MEASUREMENT PHOTO.....	14
6 RADIATED EMISSION TEST.....	15
6.1 MEASUREMENT PROCEDURE.....	15
6.2 TEST SET-UP (BLOCK DIAGRAM OF CONFIGURATION).....	15
6.3 MEASUREMENT EQUIPMENT USED.....	16
6.4 RADIATED EMISSION LIMIT.....	16
6.5 MEASUREMENT RESULT.....	18
6.6 RADIATED MEASUREMENT PHOTOS.....	22
7 20DB BANDWIDTH.....	23
7.1 20DB BANDWIDTH LIMIT.....	23
7.2 TEST INSTRUMENTS.....	23
7.3 TEST PROCEDURE.....	23
7.4 TEST SETUP.....	23
7.5 TEST RESULT.....	23
8 ANTENNA APPLICATION.....	25
8.1 ANTENNA REQUIREMENT.....	25
8.2 RESULT.....	25



1 General Information

1.1 Product Description

Characteristics	Description
Product Name	Magnetic Wireless Module
Model number	CD144
Operation Mode	Wireless Charging
Input Rating	DC 5V, 1A
Power Supply	AC120V/60Hz for adapter
Operating Frequency	326.5KHz
Wireless Charging Power	3W Max
Modulation Technique	ASK
Antenna Type	Induction coil



1.2 Related Submittal(s) / Grant(s)

This submittal(s) (test report) is intended for FCC ID: 2AQI5-60709 filing to comply with the FCC Part 15, Subpart C Rules.

1.3 Test Methodology

Both conducted and radiated testing was performed according to the procedures in ANSI C63.10 (2013). Radiated testing was performed at an antenna to EUT distance 3 meters.

1.4 Special Accessories

Not available for this EUT intended for grant.

1.5 Equipment Modifications

Not available for this EUT intended for grant.

1.6 Test Facility

Site Description
EMC Lab. : Accredited by CNAS, 2017.06.26
The certificate is valid until 2022.10.28
The Laboratory has been assessed and proved to be in compliance with
CNAS-CL01:2006 (identical to ISO/IEC 17025:2005)
The Certificate Registration Number is L6214.

Accredited by A2LA, 2018.03.15
The Certificate Number is 4422.01.

Name of Firm : Dong Guan Anci Electronic Technology Co., Ltd.
Site Location : 1-2 Floor, Building A, No.11, Headquarters 2 Road, Songshan, Lake
Hi-tech Industrial Development Zone, Dongguan City, development Zone,
Dongguan City, Guangdong Pr., China.

2 System Test Configuration

2.1 EUT Configuration

The EUT configuration for testing is installed on RF field strength measurement to meet the Commissions requirement and operating in a manner which intends to maximize its emission characteristics in a continuous normal application.

2.2 EUT Exercise

The Transmitter was operated in the normal operating mode. The TX frequency was fixed which was for the purpose of the measurements.

2.3 Test Procedure

2.3.1 Conducted Emissions

The EUT is a placed on as turn table which is 0.8 m above ground plane. According to the requirements in Section 13.1.4.1 of ANSI C63.10-2013 Conducted emissions from the EUT measured in the frequency range between 0.15 MHz and 30 MHz using CISPR Quasi-Peak and average detector mode.

2.3.2 Radiated Emissions

The EUT is a placed on as turn table which is 0.8 m above ground plane. The turn table shall rotate 360 degrees to determine the position of maximum emission level. EUT is set 3m away from the receiving antenna which varied from 1m to 4m to find out the highest emission. And also, each emission was to be maximized by changing the polarization of receiving antenna both horizontal and vertical. In order to find out the max. emission, the fixed in a particular direction according to the requirements in Section 13.1.4.1 of ANSI C63.10-2013.

2.4 Configuration of Tested System

Fig. 2-1 Configuration of Tested System

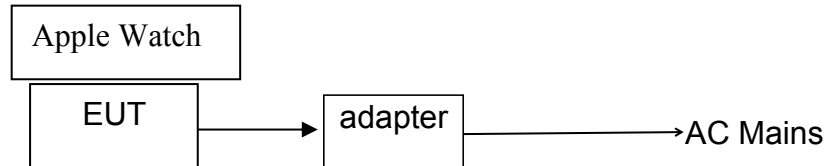


Table 2-1 Equipment Used in Tested System

Item	Equipment	Trade Mark	Model No.	FCC ID	Note
1.	Magnetic Wireless Module	UGREEN	CD144	2AQI5-60709	<i>EUT</i>
2.	Adapter	MI	Model:MDY-12-ED Input: AC 100-240V, 50/60Hz Output: DC 5V/3A,DC 9V/3A,DC 11V/6A,DC20V/6A	N/A	<i>Support EUT</i>
3.	Apple Watch	Apple	A1859	N/A	<i>Support Equipment</i>

Note:

- (1) Unless otherwise denoted as EUT in 『Remark』 column, device(s) used in tested system is a support equipment.

3 Summary of Test Results

FCC Rules	Description Of Test	Result
§15.207	AC Power Conducted Emission	Compliant
§15.209	Radiated Emission	Compliant
§2.1049	20dB Bandwidth	Compliant
§15.203	Antenna Requirement	Compliant



4 TEST SYSTEM UNCERTAINTY

The following measurement uncertainty levels have been estimated for tests performed on the apparatus:

Parameter	Uncertainty
Conducted Emissions Test	$\pm 2.0\text{dB}$
Radiated Emission Test	$\pm 2.0\text{dB}$
Temperature	$\pm 0.5^\circ\text{C}$
Humidity	$\pm 3\%$

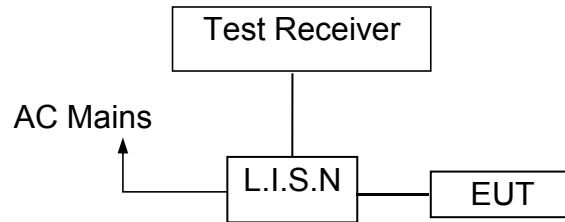
Remark: The coverage Factor ($k=2$), and measurement Uncertainty for a level of Confidence of 95%

5 Conducted Emissions Test

5.1 Measurement Procedure

1. The EUT was placed on a table which is 0.8m above ground plane.
2. Maximum procedure was performed on the six highest emissions to ensure EUT compliance.
3. Repeat above procedures until all frequency measured was complete.

5.2 Test SET-UP (Block Diagram of Configuration)



5.3 Measurement Equipment Used

EQUIPMENT TYPE	MFR	MODEL NUMBER	SERIAL NUMBER	Calibrated until
L.I.S.N	SCHWARZBECK	NSLK 8127	8127-669	2022-05-23
10 db attenuator	JFW	50FP-010-H4	4360846-427-1	2022-05-23
RF Cable	N/A	N/A	2#	2022-05-23
EMI Test Receiver	ROHDE&SCHWARZ	ESCI	101358	2022-05-23

5.4 Conducted Emission Limit

Conducted Emission Frequency(MHz)	Quasi-peak	Average
0.15-0.5	66-56	56-46
0.5-5.0	56	46
5.0-30.0	60	50

- Note:** 1. The lower limit shall apply at the transition frequencies
 2. The limit decreases in line with the logarithm of the frequency in the range of 0.15 to 0.50MHz.

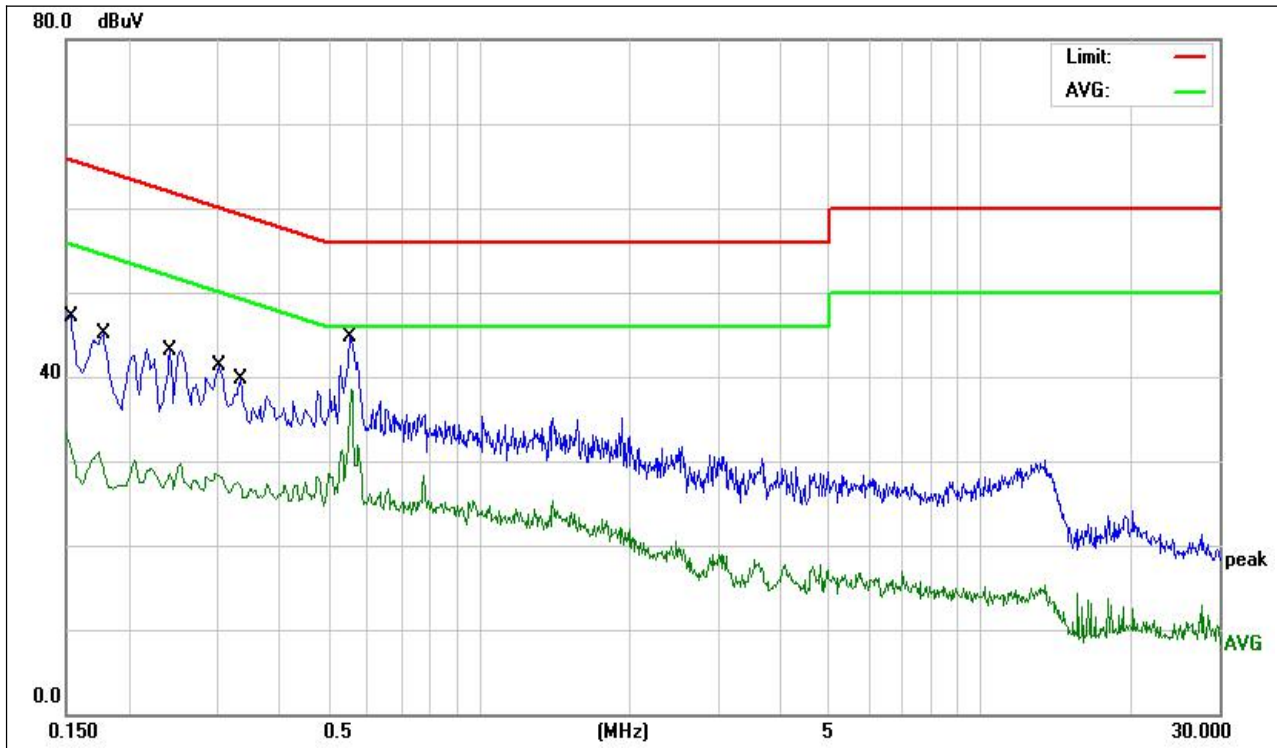


5.5 Measurement Result

Operation Mode:	TX	Test Date :	2021/07/02
Frequency Range:	0.15MHz~30MHz	Temperature :	28°C
Test Result:	PASS	Humidity :	65 %
Test By:	Best		

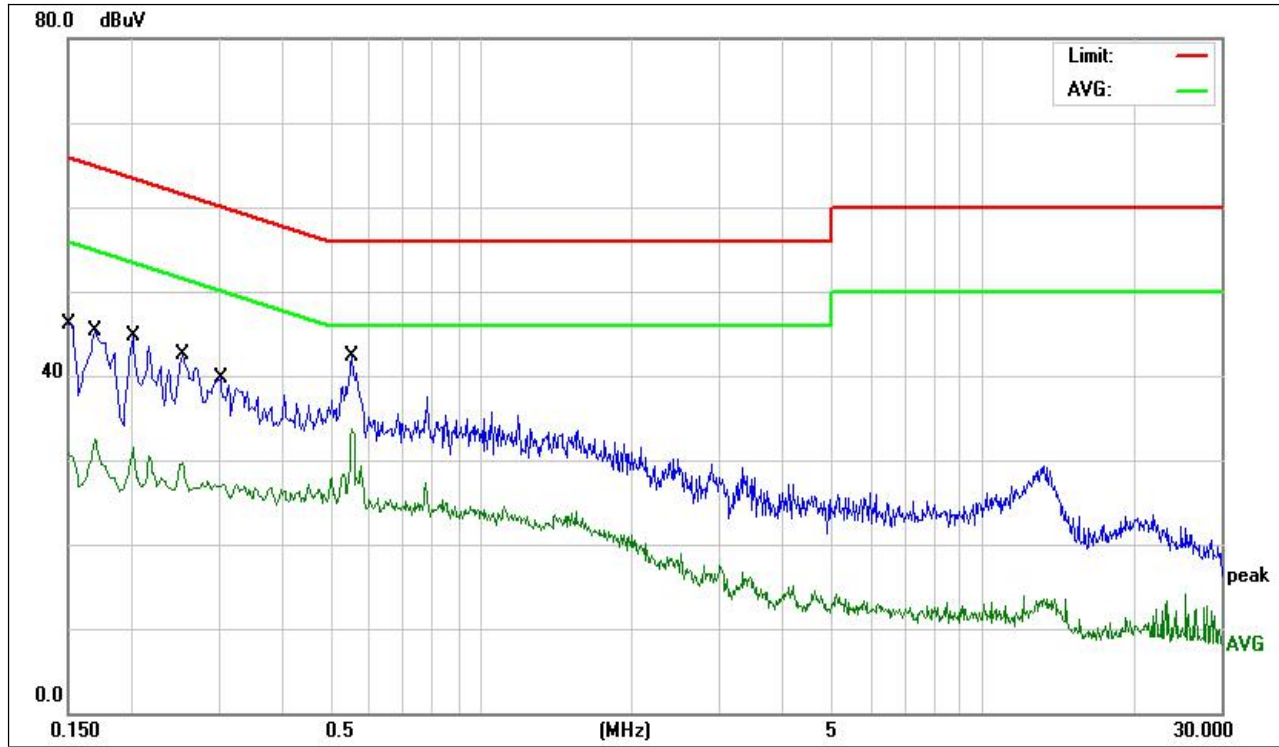
Pass

Test mode: Wireless Charging



Site:	843	Phase:	L1	Temperature(C):	26(C)
Limit:	FCC Part 15 C Conduction(QP)			Humidity(%):	60%
EUT:	Magnetic Wireless Module	Test Time:	2021/09/02		
M/N.:	CD144	Power Rating:	AC 120V/60Hz		
Mode:	Wireless Charging	Test Engineer:	Jack		
Note:					

No.	Frequency (MHz)	Reading Level(dBuV)	Factor (dB)	Measurement(dBuV)	Limit (dBuV)	Over (dB)	Detector	Comment
1	0.1539	33.90	9.64	43.54	65.78	-22.24	QP	
2	0.1539	20.74	9.64	30.38	55.78	-25.40	AVG	
3	0.1780	31.98	9.65	41.63	64.57	-22.94	QP	
4	0.1780	19.72	9.65	29.37	54.57	-25.20	AVG	
5	0.2420	29.84	9.66	39.50	62.02	-22.52	QP	
6	0.2420	18.69	9.66	28.35	52.02	-23.67	AVG	
7	0.3020	24.04	9.66	33.70	60.19	-26.49	QP	
8	0.3020	17.14	9.66	26.80	50.19	-23.39	AVG	
9	0.3339	21.61	9.69	31.30	59.35	-28.05	QP	
10	0.3339	16.24	9.69	25.93	49.35	-23.42	AVG	
11	0.5540	31.92	9.74	41.66	56.00	-14.34	QP	
12	0.5540	26.04	9.74	35.78	46.00	-10.22	AVG	
*								



Site:	843	Phase:	N	Temperature(C):	26(C)
Limit:	FCC Part 15 C Conduction(QP)	Test Time:	2021/09/02	Humidity(%):	60%
EUT:	Magnetic Wireless Module	Power Rating:	AC 120V/60Hz	Test Engineer:	Jack
M/N.:	CD144	Mode:	Wireless Charging	Note:	

No.	Frequency (MHz)	Reading Level(dBuV)	Factor (dB)	Measurement(dBuV)	Limit (dBuV)	Over (dB)	Detector	Comment
1	0.1500	33.47	9.64	43.11	65.99	-22.88	QP	
2	0.1500	21.15	9.64	30.79	55.99	-25.20	AVG	
3	0.1700	31.22	9.65	40.87	64.96	-24.09	QP	
4	0.1700	19.07	9.65	28.72	54.96	-26.24	AVG	
5	0.2020	30.98	9.66	40.64	63.52	-22.88	QP	
6	0.2020	19.26	9.66	28.92	53.52	-24.60	AVG	
7	0.2540	29.99	9.66	39.65	61.62	-21.97	QP	
8	0.2540	18.89	9.66	28.55	51.62	-23.07	AVG	
9	0.3020	24.24	9.66	33.90	60.19	-26.29	QP	
10	0.3020	16.91	9.66	26.57	50.19	-23.62	AVG	
11	0.5540	30.02	9.74	39.76	56.00	-16.24	QP	
12	0.5540	24.02	9.74	33.76	46.00	-12.24	AVG	
*								

5.6 Conducted Measurement Photo



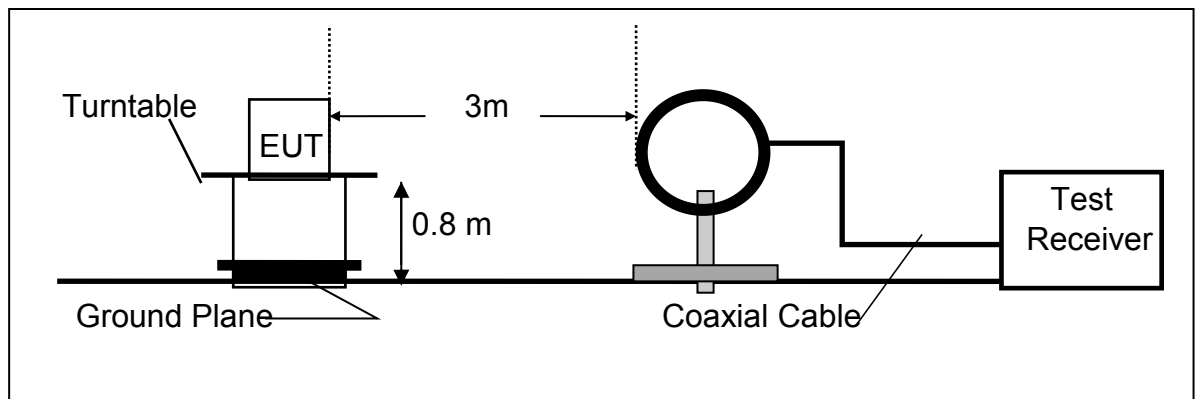
6 Radiated Emission Test

6.1 Measurement Procedure

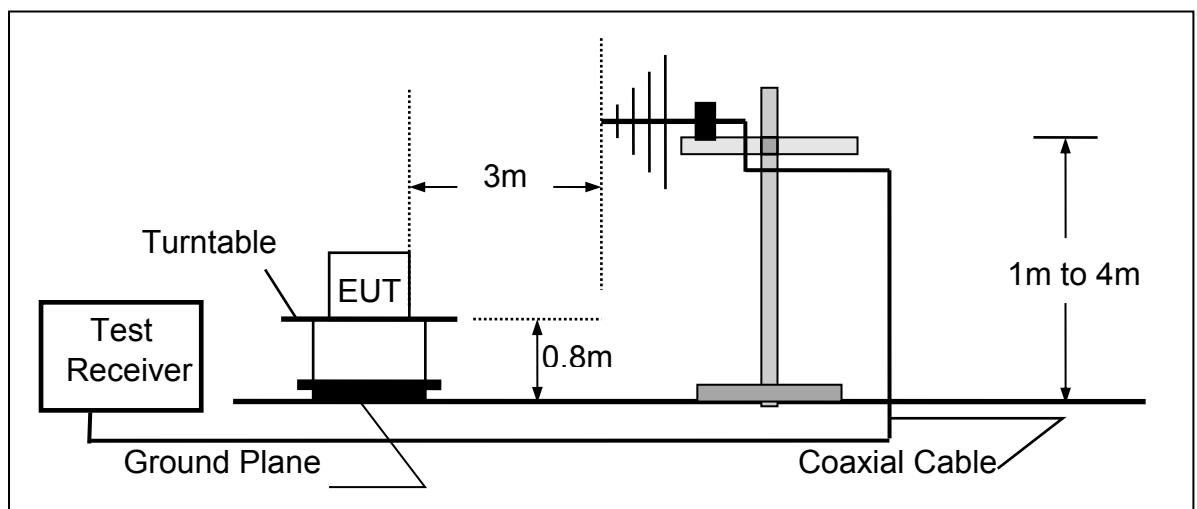
1. The EUT was placed on a turn table which is 0.8m above ground plane.
2. Maximum procedure was performed on the six highest emissions to ensure EUT compliance.
3. And also, each emission was to be maximized by changing the polarization of receiving antenna both horizontal and vertical.
4. Repeat above procedures until all frequency measured were complete.

6.2 Test SET-UP (Block Diagram of Configuration)

(A) Radiated Emission Test Set-Up, Frequency Below 30MHz



(B) Radiated Emission Test Set-Up, Frequency Below 1000MHz





6.3 Measurement Equipment Used

Item	Equipment	Manufacturer	Model No.	Serial No.	Calibrated until
1.	EMI Test Receiver	Rohde & Schwarz	ESPI	100502	2021/11/19
2.	Pre-Amplifier	HP	8447D	2727A06172	2022-05-23
3.	Bilog Antenna	Schwarzbeck	VULB9163	VULB9163-588	2022-05-23
4.	Loop Antenna	Schwarzbeck	FMZB 1516	1516-141	2021/11/19
5.	RF Cable	Gigalink Microwave	ZT40-2.92J-2.92 J-2m	N/A	2021/11/19
6.	RF Cable	Gigalink Microwave	ZT40-2.92J-2.92 J-0.3m	N/A	2021/11/19
7.	RF Cable	N/A	N/A	6#	2022-05-23
8.	3m Semi-anechoic Chamber	chengyu	9m*6m*6m	N/A	2022-05-23
9.	Test Software	Farad	EZ-EMC Ver:ANCI-3A1	N/A	N/A

6.4 Radiated Emission Limit

The emissions from an intentional radiator shall not exceed the field strength levels specified in the following table 15.209(a):

FCC Part 15.209				
Frequency (MHz)	Field Strength Limitation		Field Strength Limitation Frequency tion at 3m Measurement Dist	
	(uV/m)	Dist	(uV/m)	(dBuV/m)
0.009 – 0.490	2400 / F(KHz)	300m	10000 * 2400/F(KHz)	20log 2400/F(KHz) + 80
0.490 – 1.705	24000 / F(KHz)	30m	100 * 24000/F(KHz)	20log 24000/F(KHz) + 40
1.705 – 30.00	30	30m	100* 30	20log 30 + 40
30.0 – 88.0	100	3m	100	20log 100
88.0 – 216.0	150	3m	150	20log 150
216.0 – 960.0	200	3m	200	20log 200
Above 960.0	500	3m	500	20log 500



15.205 Restricted bands of operation

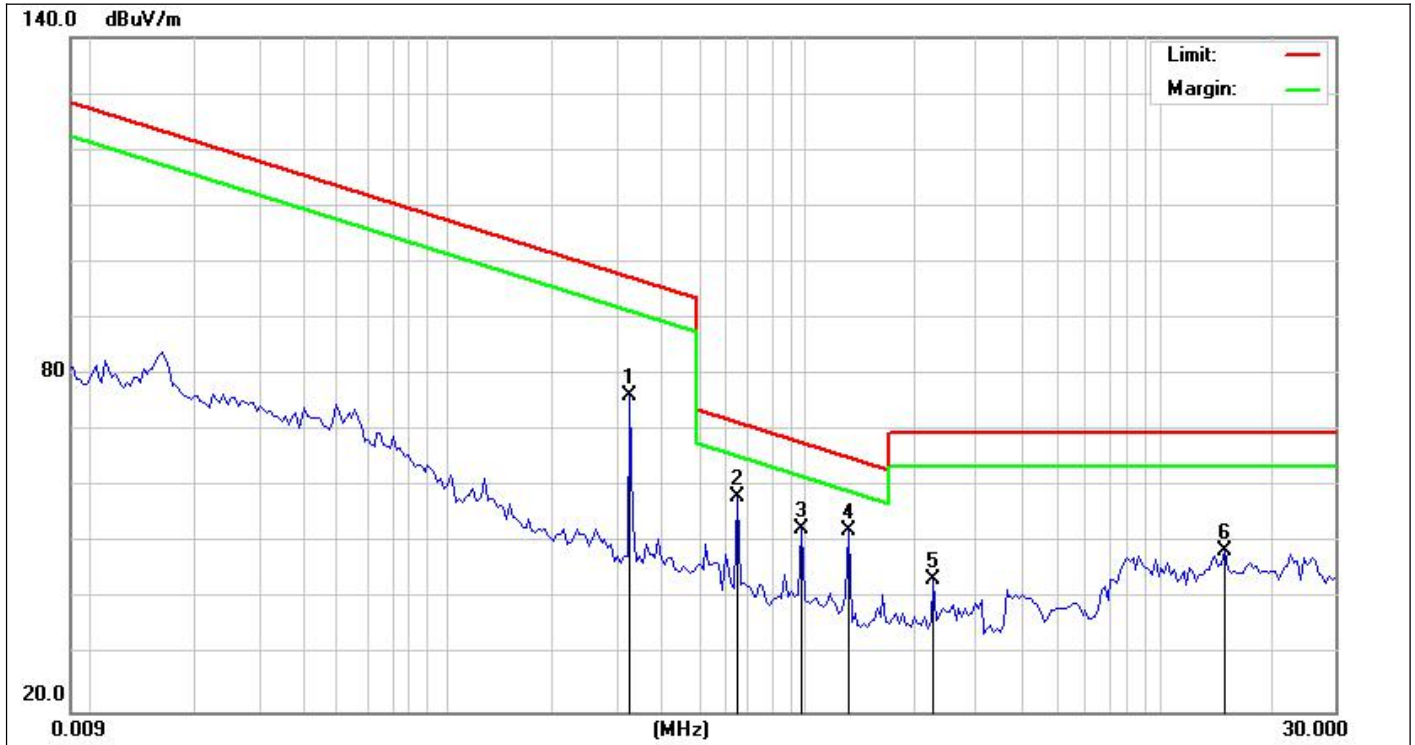
MHz	MHz	MHz	GHz
0.090 - 0.110	16.42 - 16.423	399.9 - 410	4.5 - 5.15
¹ 0.495 - 0.505	16.69475 - 16.69525	608 - 614	5.35 - 5.46
2.1735 - 2.1905	16.80425 - 16.80475	960 - 1240	7.25 - 7.75
4.125 - 4.128	25.5 - 25.67	1300 - 1427	8.025 - 8.5
4.17725 - 4.17775	37.5 - 38.25	1435 - 1626.5	9.0 - 9.2
4.20725 - 4.20775	73 - 74.6	1645.5 - 1646.5	9.3 - 9.5
6.215 - 6.218	74.8 - 75.2	1660 - 1710	10.6 - 12.7
6.26775 - 6.26825	108 - 121.94	1718.8 - 1722.2	13.25 - 13.4
6.31175 - 6.31225	123 - 138	2200 - 2300	14.47 - 14.5
8.291 - 8.294	149.9 - 150.05	2310 - 2390	15.35 - 16.2
8.362 - 8.366	156.52475 - 156.52525	2483.5 - 2500	17.7 - 21.4
8.37625 - 8.38675	156.7 - 156.9	2690 - 2900	22.01 - 23.12
8.41425 - 8.41475	162.0125 - 167.17	3260 - 3267	23.6 - 24.0
12.29 - 12.293	167.72 - 173.2	3332 - 3339	31.2 - 31.8
12.51975 - 12.52025	240 - 285	3345.8 - 3358	36.43 - 36.5
12.57675 - 12.57725	322 - 335.4	3600 - 4400	(²)

- Remark:
1. Emission level in dBuV/m=20 log (uV/m)
 2. Measurement was performed at an antenna to the closed point of EUT distance of meters.
 3. Only spurious frequency is permitted to locate within the Restricted Bands specified in provision of ξ 15.205, and the emissions located in restricted bands also comply with 15.209 limit.



6.5 Measurement Result

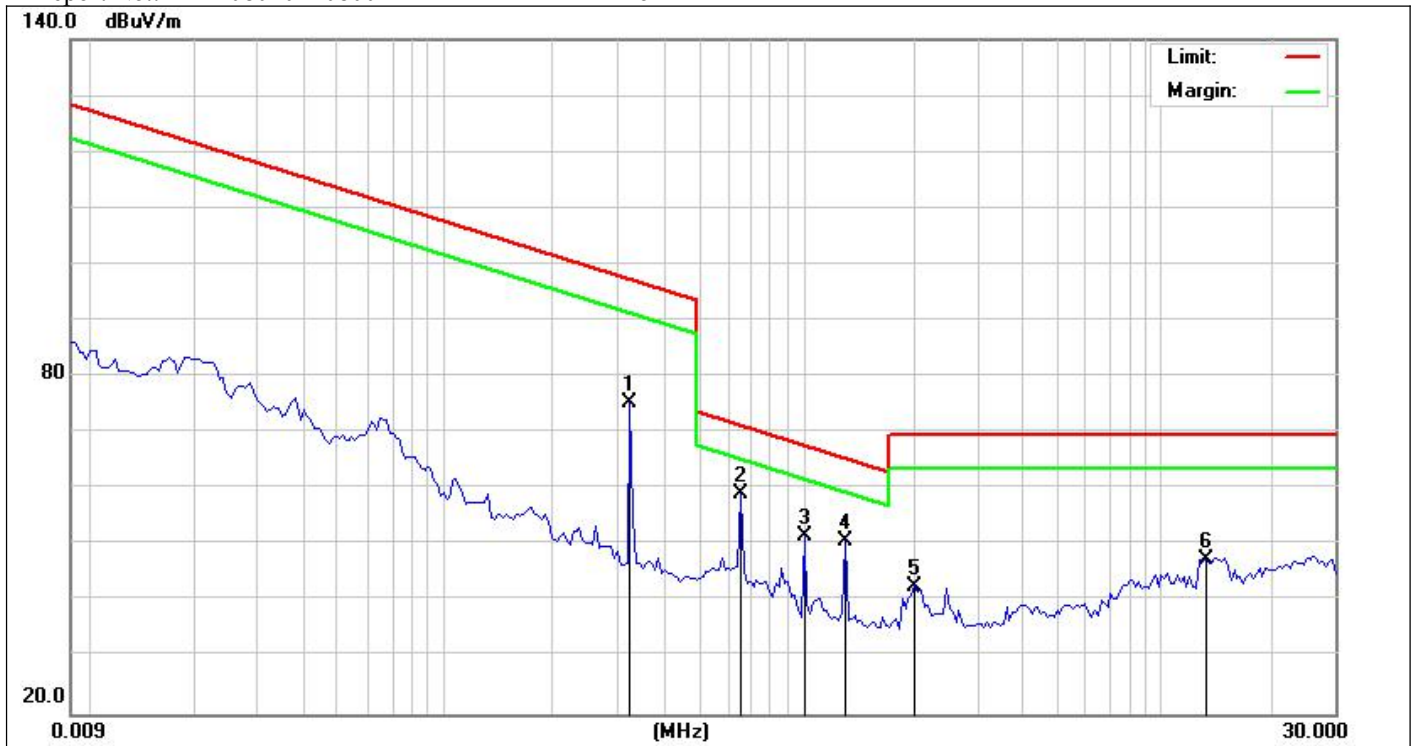
Test mode: Wireless Charging



Site:	LAB	Antenna: Vertical	Temperature(C): 23.4(C)
Limit:	FCC Part 15C 3m Radiation(QP)		Humidity(%): 56.7%
EUT:	Magnetic Wireless Module	Test Time:	2021/09/02
M/N.:	CD144	Power Rating:	AC 120V/60Hz
Mode:	Wireless Charging	Test Engineer:	sunshine
Note:			

No.	Frequency (MHz)	Reading (dBuV)	Factor (dB/m)	Level (dBuV/m)	Limit (dBuV/m)	Margin (dB)	Det.	Height (cm)	Azimuth (deg)	Remark
1	0.3259	70.45	5.80	76.25	97.32	-21.07	QP	100	74	
2 *	0.6491	51.82	6.44	58.26	71.36	-13.10	QP	100	125	
3	0.9800	46.54	6.08	52.62	67.80	-15.18	QP	100	36	
4	1.3080	46.02	6.13	52.15	65.30	-13.15	QP	100	74	
5	2.2835	37.21	6.33	43.54	69.50	-25.96	QP	100	101	
6	14.7522	41.67	6.93	48.60	69.50	-20.90	QP	100	123	

*:Maximum data x:Over limit !:over margin



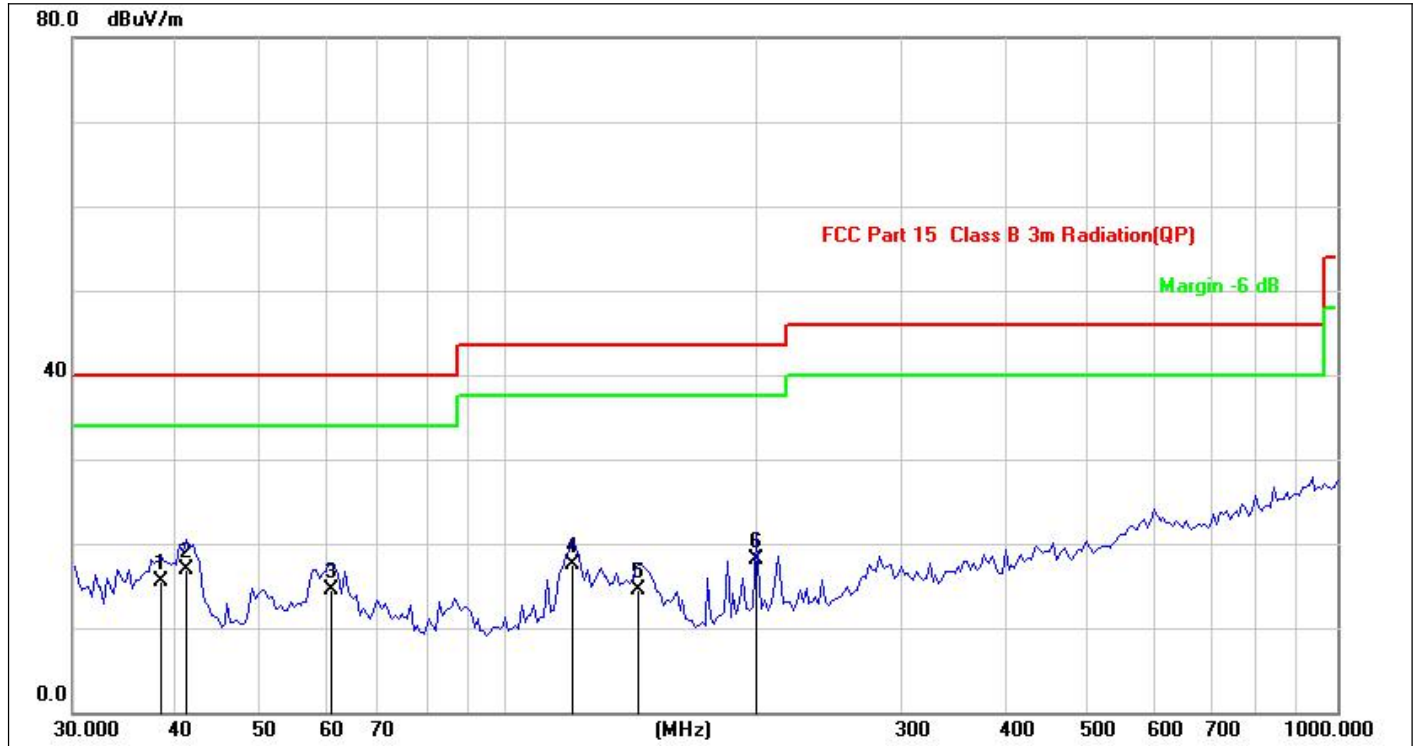
Site:	LAB	Antenna::	Horizontal	Temperature(C):	23.4(C)
Limit:	FCC Part 15C 3m Radiation(QP)	Test Time:	2021/09/02	Humidity(%):	56.7%
EUT:	Magnetic Wireless Module	Power Rating:	AC 120V/60Hz		
M/N.:	CD144	Test Engineer:	sunshine		
Mode:	Wireless Charging				
Note:					

No.	Frequency (MHz)	Reading (dBuV)	Factor (dB/m)	Level (dBuV/m)	Limit (dBuV/m)	Margin (dB)	Det.	Height (cm)	Azimuth (deg)	Remark
1	0.3259	69.45	5.80	75.25	97.32	-22.07	QP	100	74	
2 *	0.6601	52.65	6.45	59.10	71.22	-12.12	QP	100	125	
3	0.9801	45.63	6.08	51.71	67.79	-16.08	QP	100	36	
4	1.3051	44.59	6.13	50.72	65.31	-14.59	QP	100	74	
5	2.0219	36.44	6.36	42.80	69.50	-26.70	QP	100	101	
6	13.0625	40.73	6.76	47.49	69.50	-22.01	QP	100	123	

- Note:**
- (1) All Readings are Peak Value.
 - (2) Emission Level= Reading Level+Probe Factor +Cable Loss.
 - (3) The average measurement was not performed when the peak measured data under the limit of average detection.
 - (4) EUT lying on the table position is the worst case result in the report.



Test mode: Wireless Charging



Site:	LAB	Antenna::	Vertical	Temperature(C):	23.4(C)
Limit:	FCC Part 15 Class B 3m Radiation(QP)			Humidity(%):	56.7%
EUT:	Magnetic Wireless Module	Test Time:	2021/09/02		
M/N.:	CD144	Power Rating:	AC 120V/60Hz		
Mode:	Wireless Charging	Test Engineer:	sunshine		
Note:					

No.	Frequency (MHz)	Reading (dBuV)	Factor (dB/m)	Level (dBuV/m)	Limit (dBuV/m)	Margin (dB)	Det.	Height (cm)	Azimuth (deg)	Remark
1	38.3462	32.85	-17.31	15.54	40.00	-24.46	QP	100	45	
2 *	41.1320	33.90	-17.06	16.84	40.00	-23.16	QP	100	45	
3	61.5618	30.75	-16.25	14.50	40.00	-25.50	QP	100	27	
4	119.8556	34.73	-17.16	17.57	43.50	-25.93	QP	100	27	
5	144.0819	33.47	-18.99	14.48	43.50	-29.02	QP	100	96	
6	199.2855	34.49	-16.37	18.12	43.50	-25.38	QP	100	96	

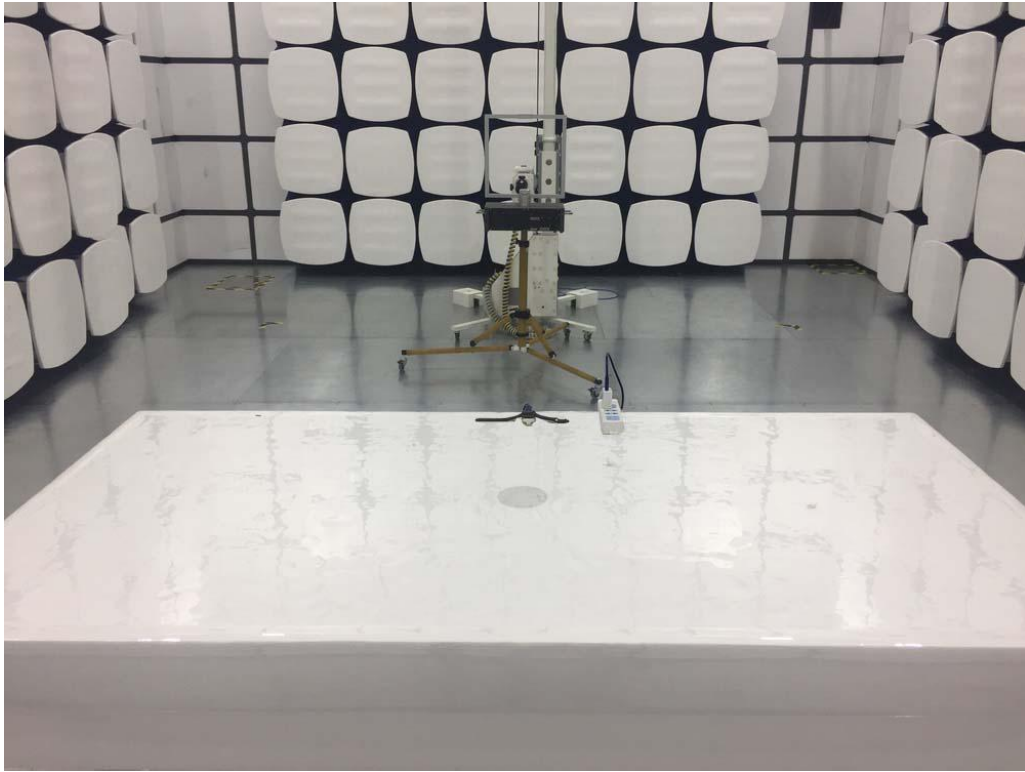
*:Maximum data x:Over limit !:over margin



Site:	LAB	Antenna::	Horizontal	Temperature(C):	23.4(C)
Limit:	FCC Part 15 Class B 3m Radiation(QP)	Humidity(%):	56.7%	Test Time:	2021/09/02
EUT:	Magnetic Wireless Module	Power Rating:	AC 120V/60Hz	Test Engineer:	sunshine
M/N.:	CD144				
Mode:	Wireless Charging				
Note:					

No.	Frequency (MHz)	Reading (dBuV)	Factor (dB/m)	Level (dBuV/m)	Limit (dBuV/m)	Margin (dB)	Det.	Height (cm)	Azimuth (deg)	Remark
1	119.8556	29.54	-17.16	12.38	43.50	-31.12	QP	100	45	
2	135.5062	31.13	-18.74	12.39	43.50	-31.11	QP	100	45	
3	174.7301	29.92	-17.57	12.35	43.50	-31.15	QP	100	27	
4	199.2855	31.81	-16.37	15.44	43.50	-28.06	QP	100	27	
5	280.5152	32.10	-13.46	18.64	46.00	-27.36	QP	100	96	
6 *	328.4627	32.01	-12.88	19.13	46.00	-26.87	QP	100	96	

6.6 Radiated Measurement Photos



7 20db Bandwidth

7.1 20dB Bandwidth Limit

None: for reporting purposed only.

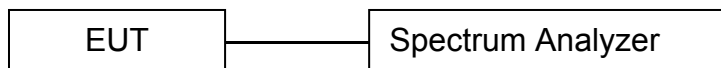
7.2 Test Instruments

Refer a test equipment and calibration data table in this test report.

7.3 Test Procedure

The bandwidth of the fundamental frequency was measured by spectrum analyzer with 1KHz RBW and 3KHz VBW. The 20dB bandwidth is defined as the total spectrum the power of which is higher than peak power minus 20dB.

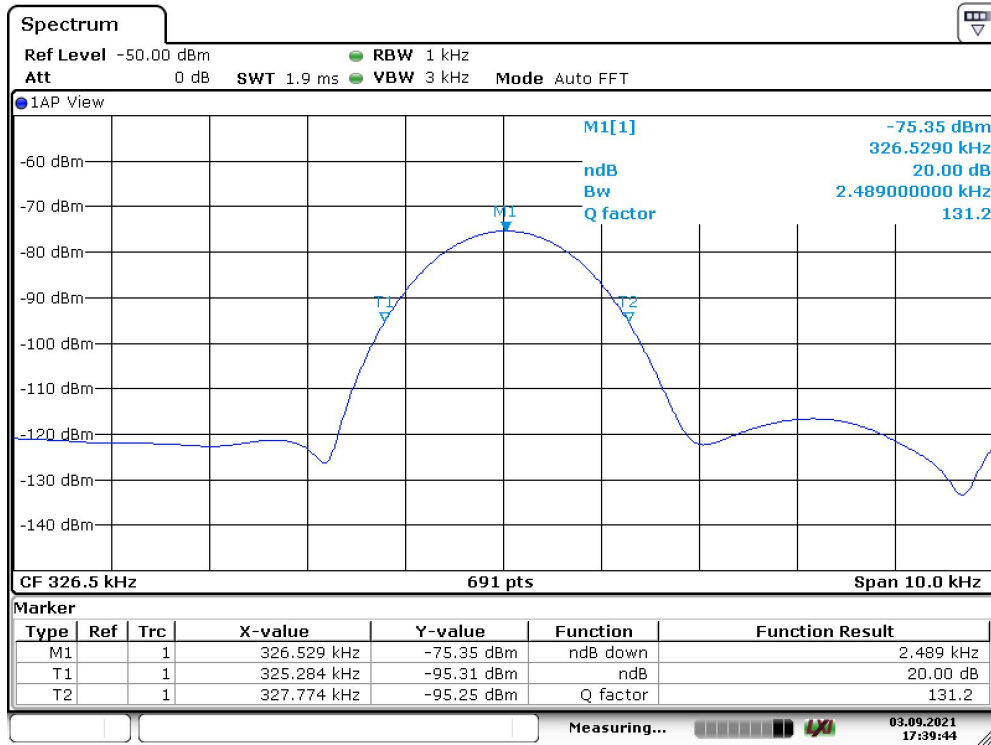
7.4 Test Setup



7.5 Test Result

Frequency (KHz)	20dB Bandwidth (KHz)	Results
326.5	2.489	PASS

20 dB Bandwidth Test plot



Date: 3.SEP.2021 17:39:44



8 Antenna Application

8.1 Antenna requirement

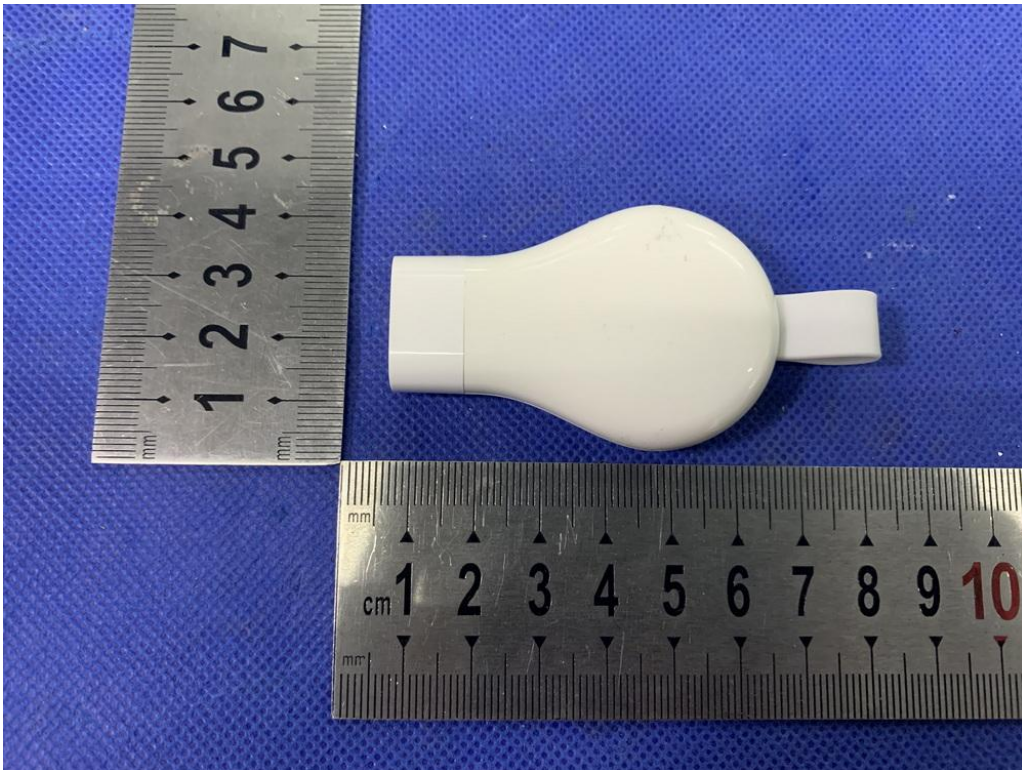
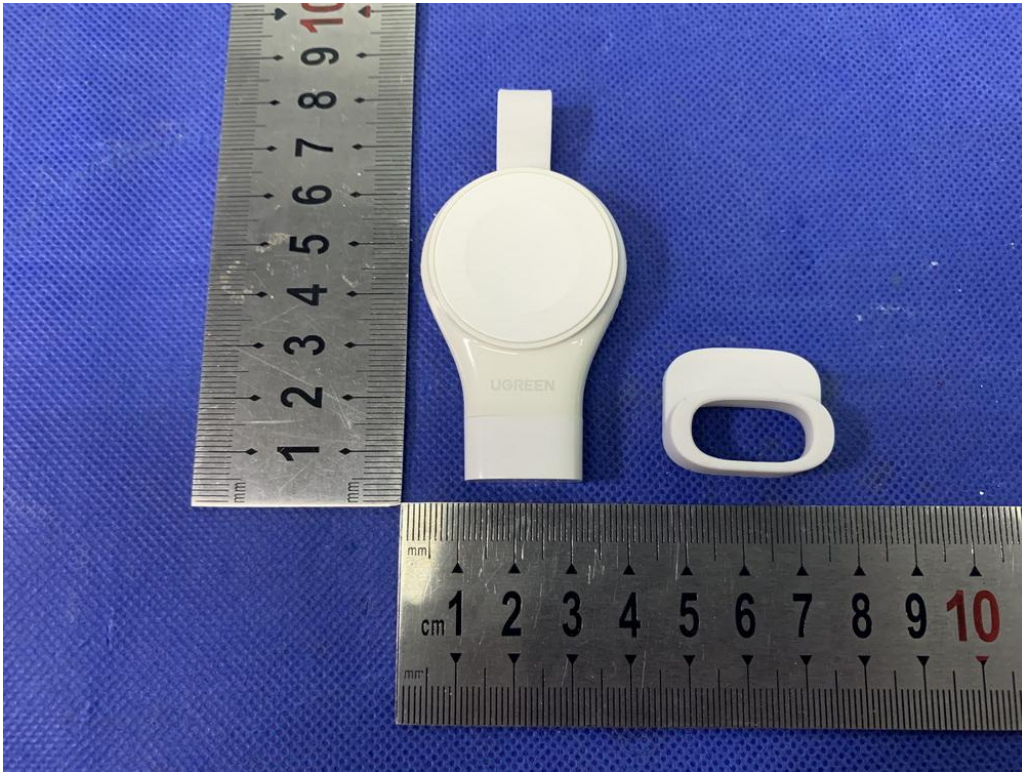
For intentional device, according to FCC 47 CFR Section 15.203, an intentional radiator shall be designed to ensure that no antenna other than that furnished by the responsible party shall be used with the device.

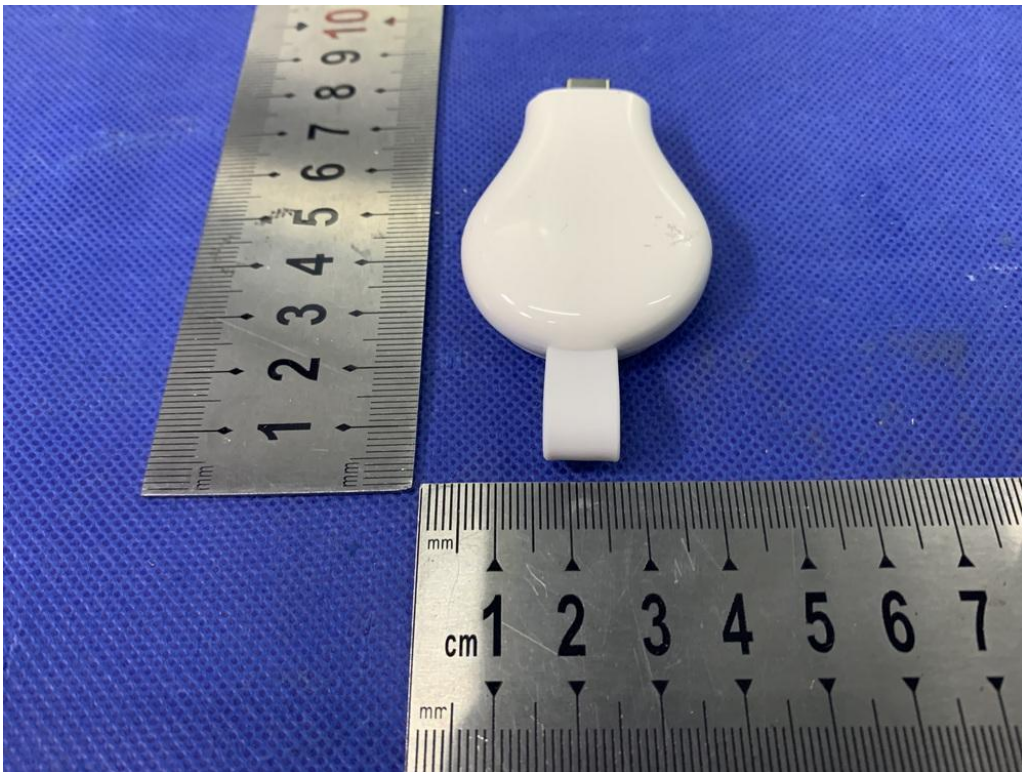
8.2 Result

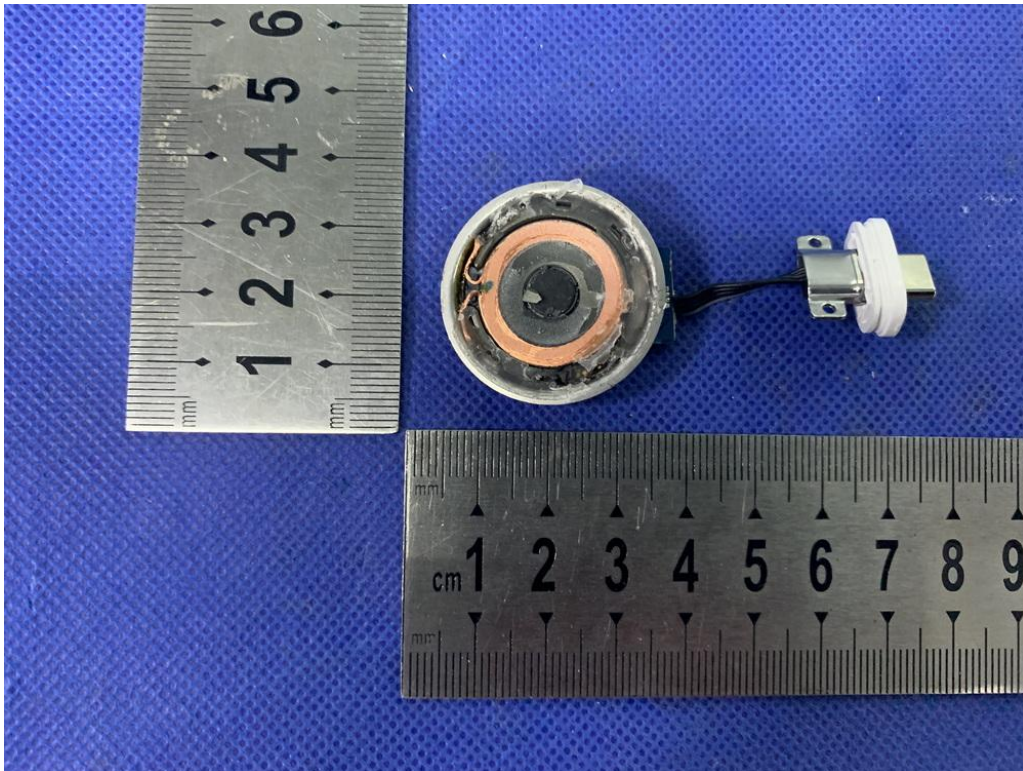
The EUT's antenna, permanent attached antenna, used an Induction coil and integrated on PCB, The antenna's gain meets the requirement.

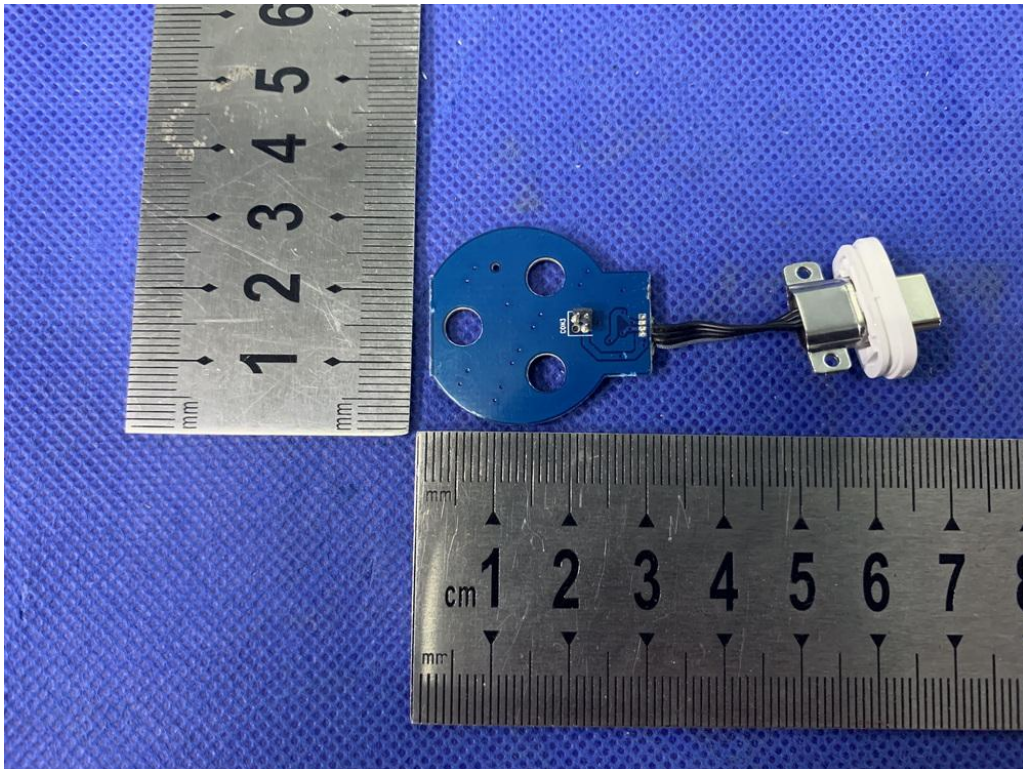
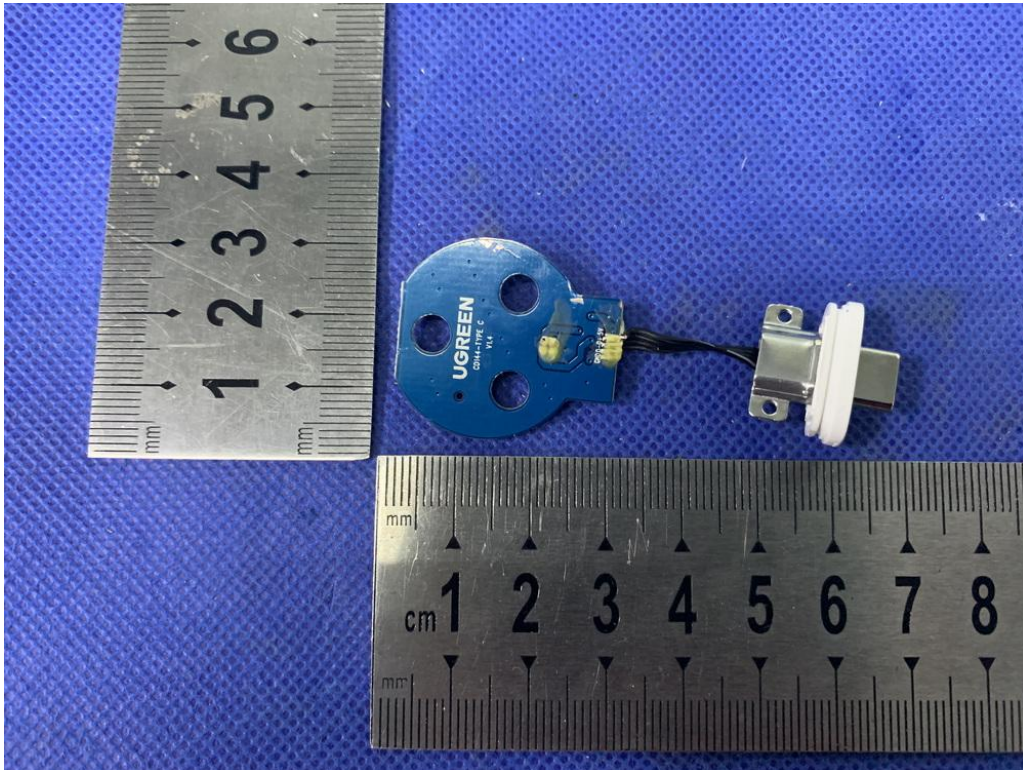


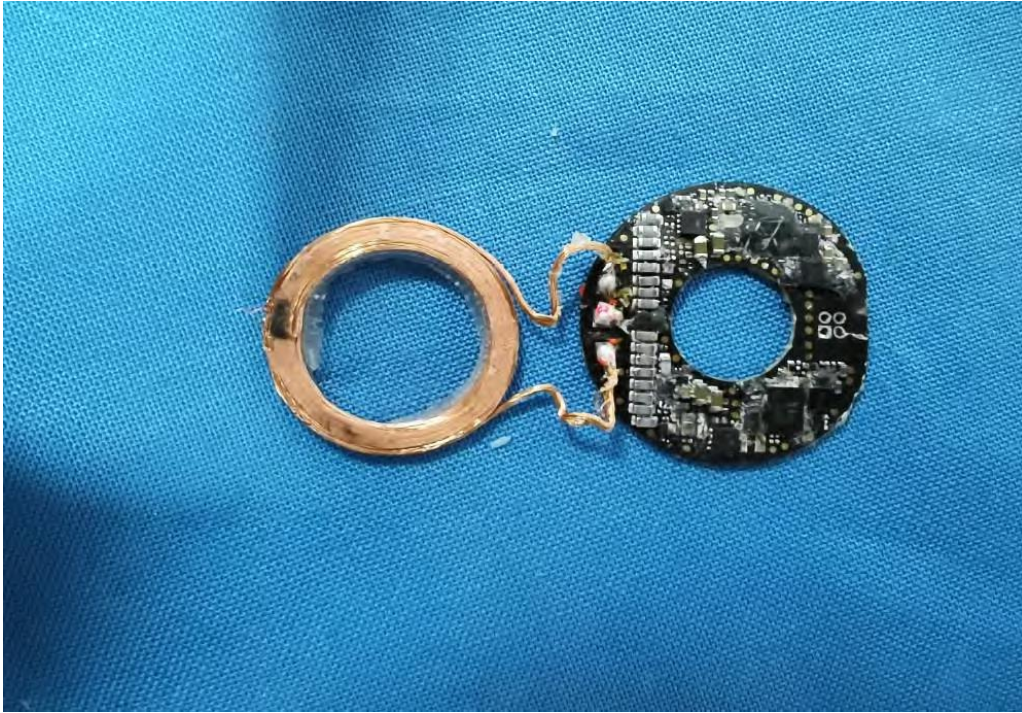
APPENDIX (Photos of EUT)











-----The end-----