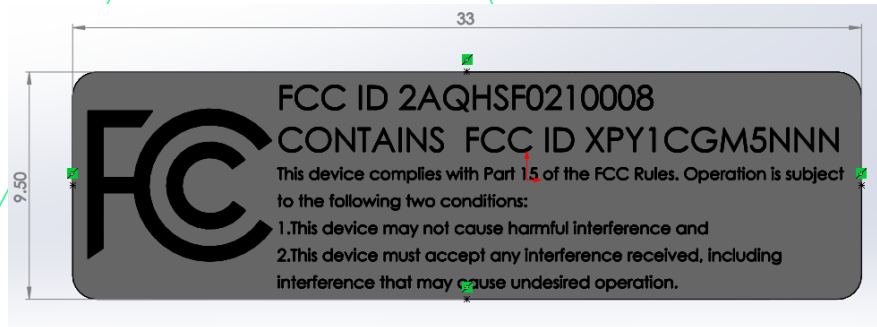


# FCC ID marking on housing

Information written on the housing:



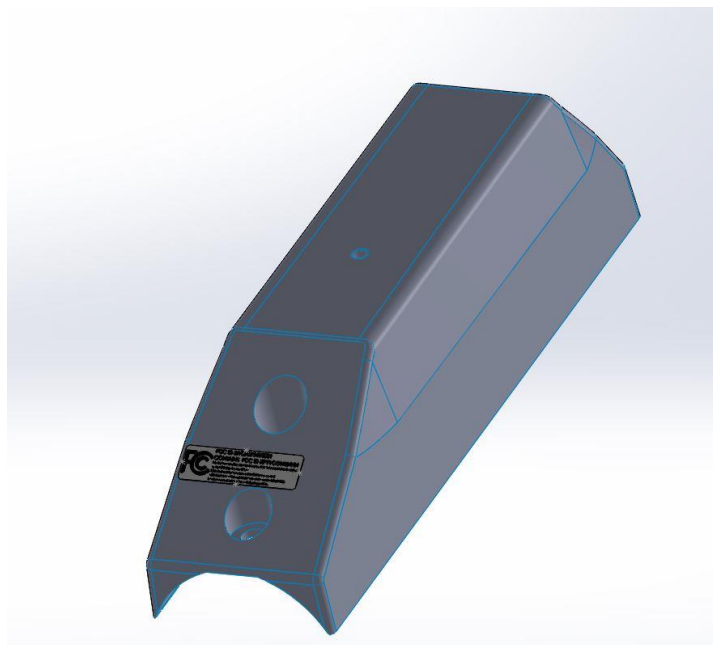
FCC ID placement on the housing:

Adhesive – permanent acrylic adhesive

Sticker – Arlon 8000 material

There are two options to mark the FCC ID to the housing:

1. A sticker is placed on the housing with the measurements shown above. The adhesive is permanent acrylic adhesive and sticker material durable Arlon 8000.



2. An FCC logo on the outside and same sticker on the inside. The writings would be white on the black housing.

