

### OPERATING DRONE

Printed in China

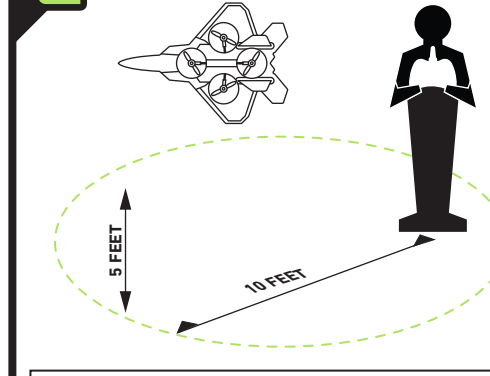
#### 1 Pre Flight Checklist

1. Read all warnings and instructions.
2. Install remote batteries, page 3.
3. Make sure that drone and remote are powered off.
4. Install drone holder.
5. Charge batteries, page 3.

Make sure your remote is off.

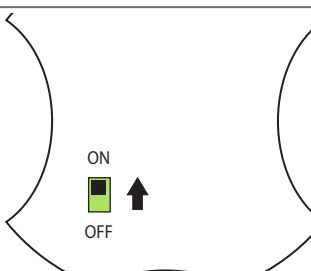


#### 2 Choose a location

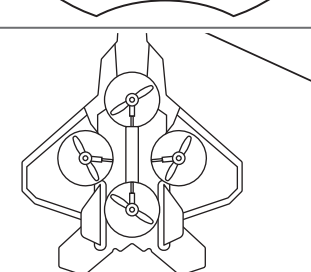


Always turn off remote prior to retrieving or picking up drone. This will help you avoid accidentally activating propellers.

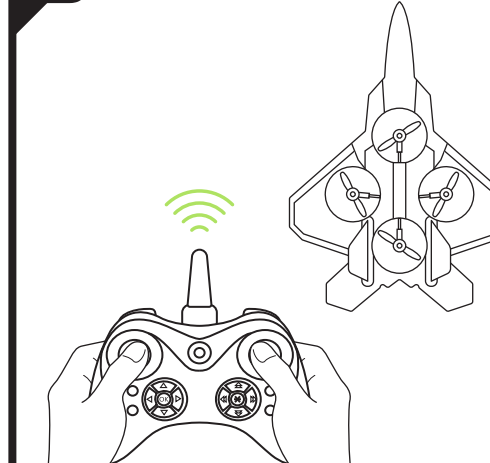
Slide drone switch to ON.



Place drone on a flat even surface.



#### 3 Pairing Drone

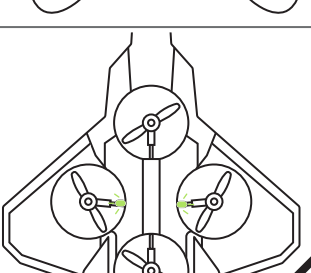


For ease of control, the red lights should be toward you.

Turn on the Remote controller. Push stick up and then down.



The drone's lights will flicker during the pairing process and then remain on once it has paired.

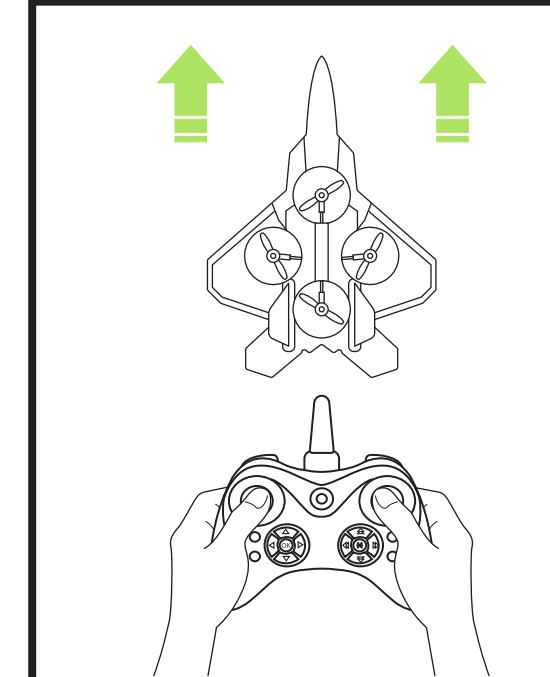


6

### OPERATING DRONE

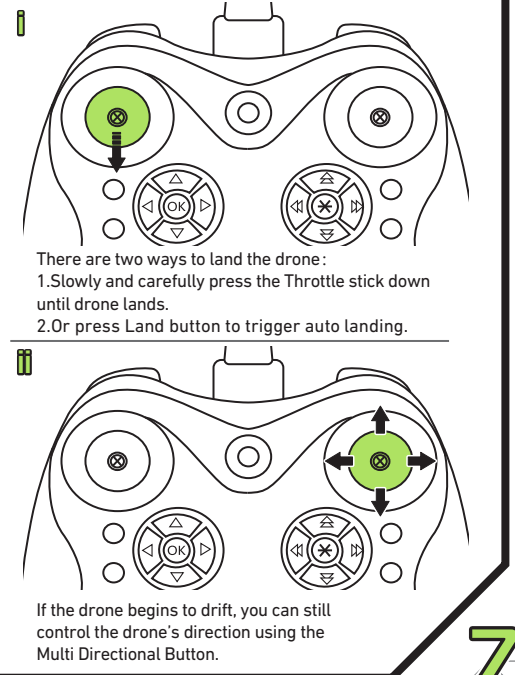
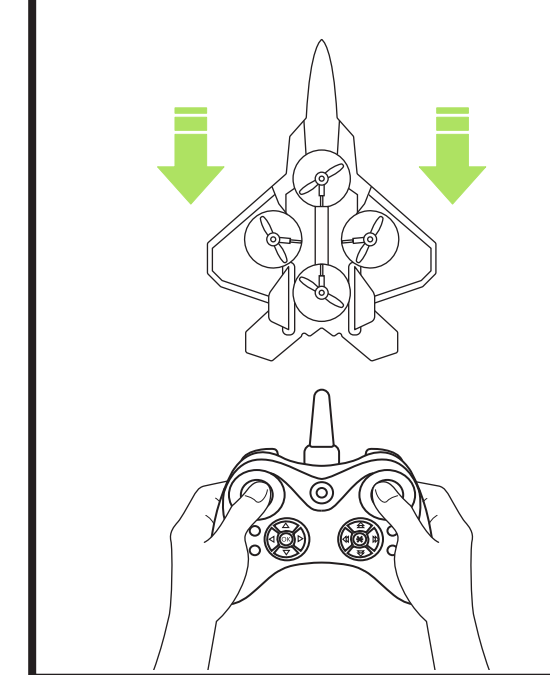
Printed in China

#### TAKE OFF



Slowly and carefully press the Throttle stick. Drone will begin to elevate.

#### LAND



There are two ways to land the drone: 1. Slowly and carefully press the Throttle stick down until drone lands. 2. Or press Land button to trigger auto landing.

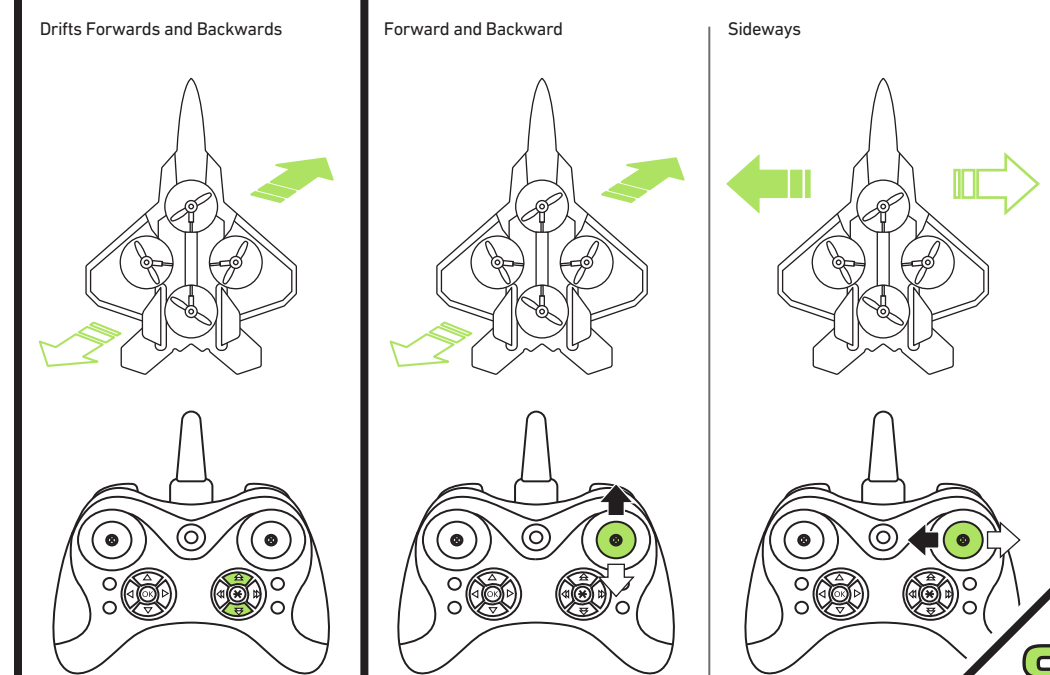
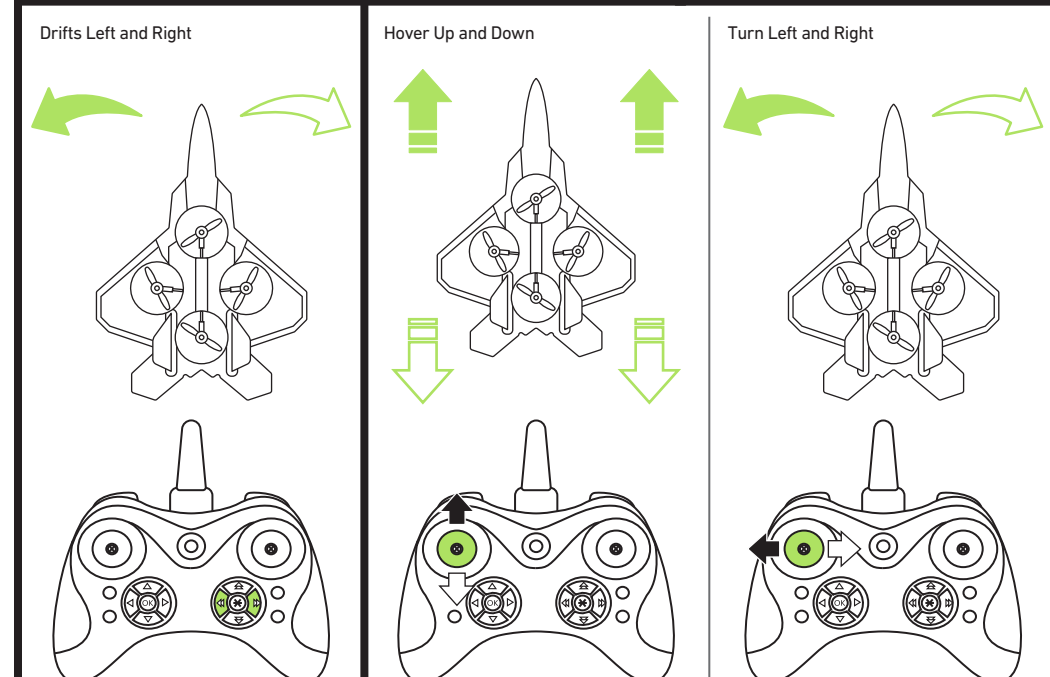
If the drone begins to drift, you can still control the drone's direction using the Multi Directional Button.

7

### OPERATING DRONE

Printed in China

#### FINE-TUNING/DIRECTION

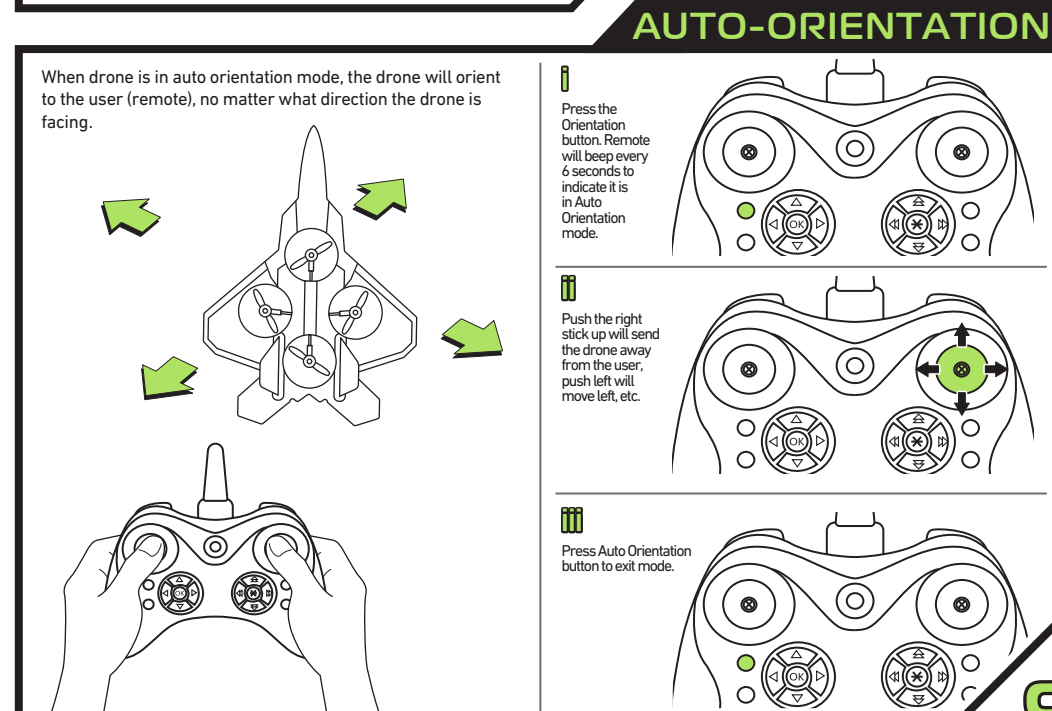
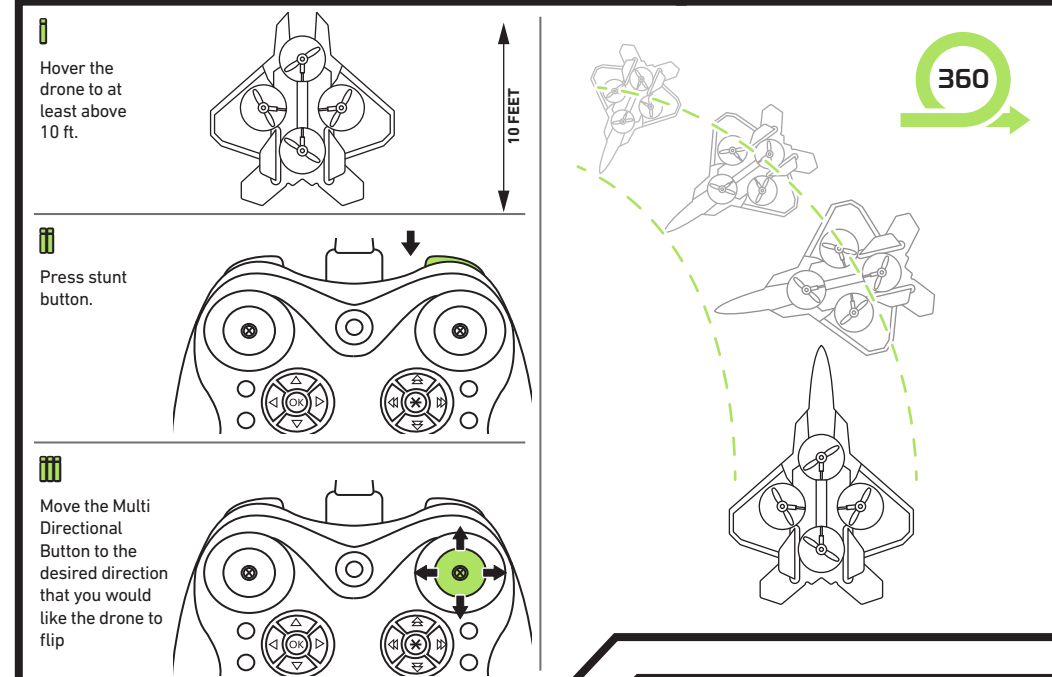


8

### ADVANCED MODES

Printed in China

#### STUNT



9

### TIPS & TROUBLESHOOTING

Printed in China

#### TIPS

- Do not crash drone into sand or dirt. Drone gears may become clogged
- When first learning to fly, practice lifting off and hovering
- Stay several feet from walls and buildings
- Always press throttle all the way down after crashing or when something gets stuck in propellers
- Never fly drones above or near people, sudden changes in wind or other conditions could lead to unexpected crashes.
- Always use caution when flying drone vehicles, obey relevant laws, respect the privacy and property rights of others.
- The drone shall never be modified or used for anything except its intended purpose.

**WARNING:** Changes or modifications to this unit not expressly approved by the party responsible for compliance could void the user's authority to operate the equipment.

#### TROUBLE SHOOTING

When remote switch is turned on, the remote light does not illuminate:  
1) Check that batteries in the remote are installed correctly OR  
2) Replace with new batteries

During flight, the Remote Power LED is flashing:  
1) Remote batteries are low. Land the drone immediately.  
2) Replace old batteries.

Drone and remote properly pair, but the drone will not lift-off:  
1) Drone battery needs charging. Use the USB Charge Cable to connect the drone to power source.

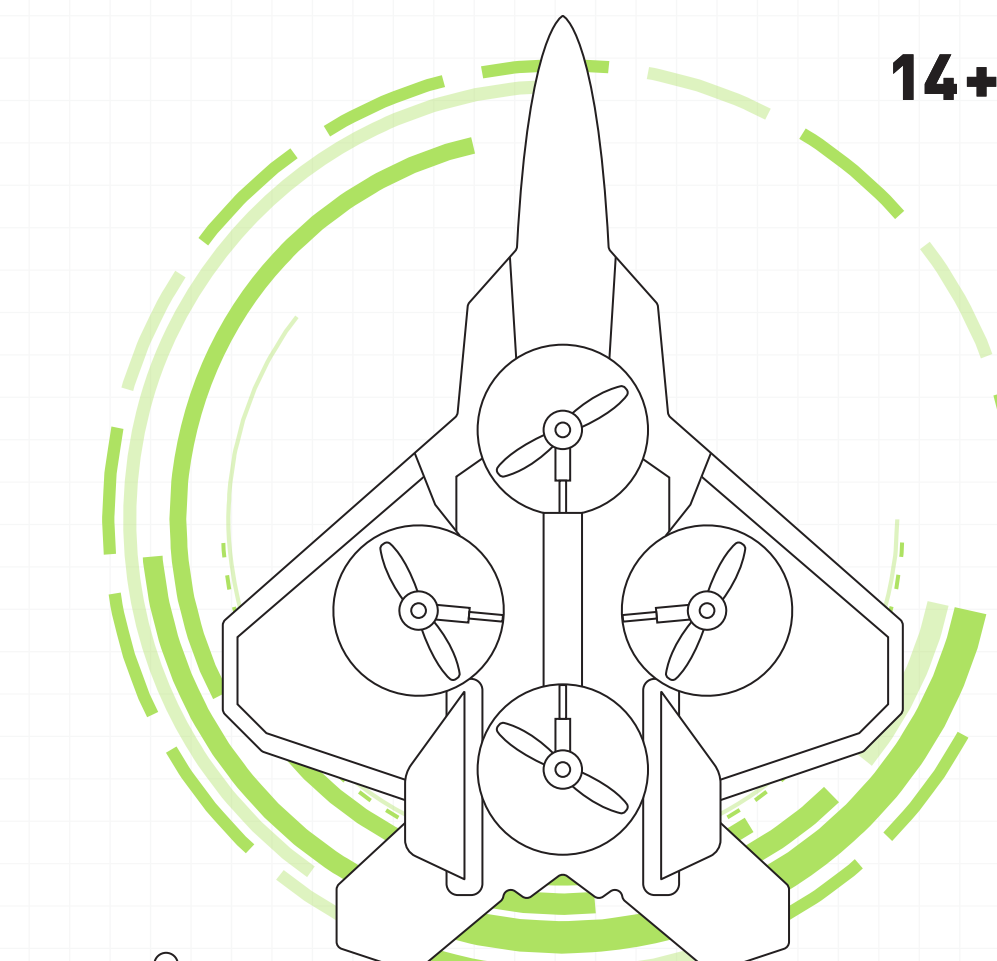
After trimming the drone, flight is very unstable and it cannot fly properly:  
1) One or more blades are most likely damaged. Replace with the proper number replacement blade and try flying again (page 3).  
2) Press the thumbstick down for 5 seconds to reset the gyroscope.  
3) Turn off the drone and remote, then repeat the pairing process (page 6).

Remote and drone cannot be paired:  
1) Remote must be within 12 feet of drone.

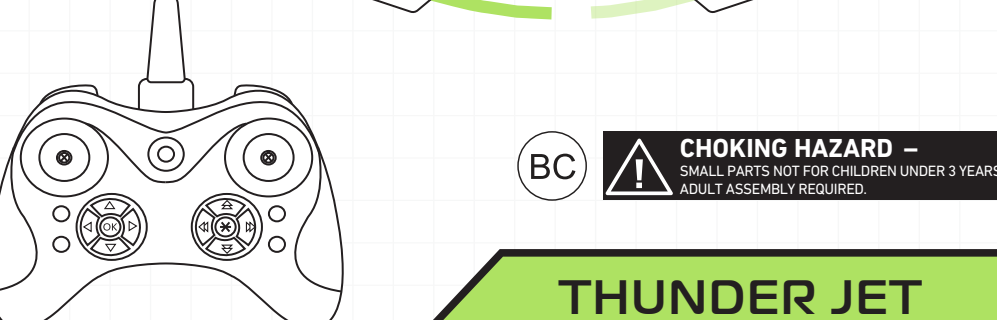
Note: If there is more than one unpaired drone within 12 feet, one must be successfully paired before others may be paired.

10

# SHARPER IMAGE



14+



BC **CHOKING HAZARD - SMALL PARTS NOT FOR CHILDREN UNDER 3 YEARS. ADULT ASSEMBLY REQUIRED.**

## THUNDER JET X DRONE

Printed in China

### GETTING TO KNOW YOUR DRONE

Printed in China

**PLEASE READ ALL WARNINGS AND INSTRUCTIONS PRIOR TO USE. KEEP THIS DOCUMENT AS IT CONTAINS IMPORTANT INFORMATION ABOUT YOUR DRONE.**

#### CHARGING

- Drone must be charged before each use (USB Charge Cable included).
- Indicator light will turn off once fully charged.
- Install batteries in remote.

#### PAIRING

Before each flight pair the remote with the drone:

1. Turn your drone on and place on a flat, level surface.
2. Turn on the remote.
3. Push stick up and then down.
4. Repeat steps 1 and 2 if necessary.

#### IMPORTANT!

After a hard landing, turn drone and remote off. Then, repeat pairing!

#### DIRECTION

- The head of the Thunder Jet X is the front of the drone.
- The tail of the Thunder Jet X is the back of the drone.
- Not applicable in auto-orientation mode.

#### REMOTE CONTROL

Practice flying your drone below 10 feet and at low speeds until comfortable with all controls to avoid unnecessary damage or injury

- **Left joystick:**
    - Up/Down controls elevation
    - Left/Right controls spin
  - **Right joystick:** controls flight direction
  - **Direction Trim:** use to eliminate drift
- To cut power to drone, move left joystick to down position

1

### GENERAL WARNINGS

Printed in China

**READ ALL WARNINGS AND PRECAUTIONS BEFORE USE.**

#### SAFETY WARNINGS:

- Not recommended for children under 14 years of age. As with all electrical products, precautions should be observed during handling and use to reduce the risk of electrical shock.
- Adult supervision is required at all times.
- Drive drone only on smooth flat surfaces.
- Never fly drones above or near people, sudden changes in wind or other conditions could lead to unexpected crashes.
- Always use caution when flying drone vehicles, obey relevant laws, respect the privacy and property rights of others.
- The drone shall never be modified or used for anything except its intended purpose.
- Before each use, an adult should review the product and battery to determine that no damage or hazards exist.
- **DO NOT TOUCH SPINNING PROPELLERS.**
- Do not allow anything to intentionally make contact in any way with spinning propellers
- Prevent contact with spinning blades by turning off remote prior to handling drone.
- Use caution and pay attention to your surroundings while operating drone.
- Do not fly drone into animals, people, or inanimate objects.
- Keep drone away from power lines, buildings, trees, public areas, and any other potentially hazardous areas.
- Do not operate in rain, heavy wind, and or any type of severe weather.
- Do not land drone on wet surfaces.
- Never touch or allow others to touch drone while it is flying.
- Always turn drone off when it is not in use.
- Always fly drone in large open areas.
- The drone will lose controlling capabilities if fly distance is more than maximum recommended altitude of 100 ft. Keep below 100 ft. to avoid potential crashing risk.

**PLEASE RECYCLE OR DISPOSE OF ELECTRONICS PROPERLY RECYCLING INFORMATION IS AVAILABLE AT WWW.MERCHSOURCE.COM**

**FAA WARNING**  
This drone weighs 0.397 lbs(180g). As of November 2017, the Federal Aviation Administration (FAA) requires registration of unmanned aircrafts weighing more than 0.55lbs. Visit [www.faa.gov/uas/registration](http://www.faa.gov/uas/registration) for more information. Ongoing compliance with Federal, state and local laws regarding operation is an owner's sole responsibility.

2

### WARNINGS

Printed in China

Warning: Changes or modifications to this unit not expressly approved by the party responsible for compliance could void the user's authority to operate the equipment.

Note: This equipment has been tested and found to comply with the limits for a Class B digital device, pursuant to part 15 of the FCC Rules. These limits are designed to provide reasonable protection against harmful interference in a residential installation. This equipment generates, uses and can radiate radio frequency energy and, if not installed and used in accordance with the instructions, may cause harmful interference to radio communications. However, there is no guarantee that interference will not occur in a particular installation. If this equipment does cause harmful interference to radio or television reception, which can be determined by turning the equipment off and on, the user is encouraged to try to correct the interference by one or more of the following measures:

- Reorient or relocate the receiving antenna.
- Increase the separation between the equipment and receiver.
- Connect the equipment into an outlet on a circuit different from that to which the receiver is connected.
- Consult the dealer or an experienced radio/TV technician for help.

This device complies with Part 15 of the FCC Rules. Operation is subject to the following two conditions: (1) this device may not cause harmful interference, and (2) this device must accept any interference received, including interference that may cause undesired operation.

Sharper Image® name and logo are registered trademarks. Distributed by and ©2018 MerchSource, LLC. Irvine, CA 92618. All rights reserved.

The artwork and design of this manual are protected by US copyright law and may not be reproduced, distributed, displaced, published or used for any purpose without prior written permission. Altering, removing or reproducing any of the trademark or copyright notices on this package is not permitted.

PATENT PENDING  
Printed in China

QUESTIONS OR CONCERNS? PLEASE GIVE US A CALL... WE'RE HERE TO HELP

**CUSTOMER SERVICE (800) 374-2744**

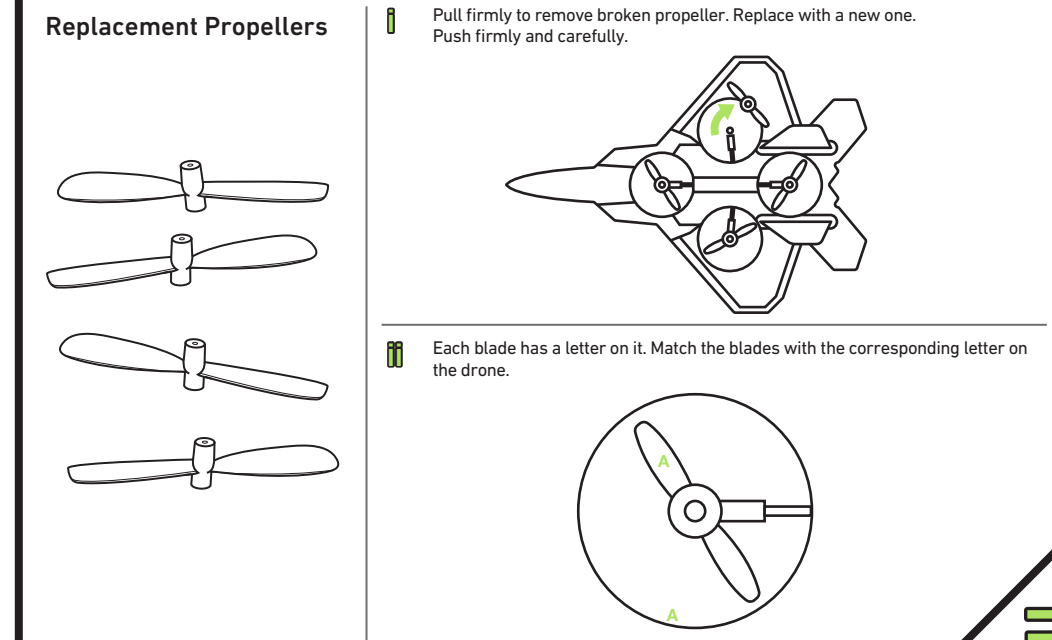
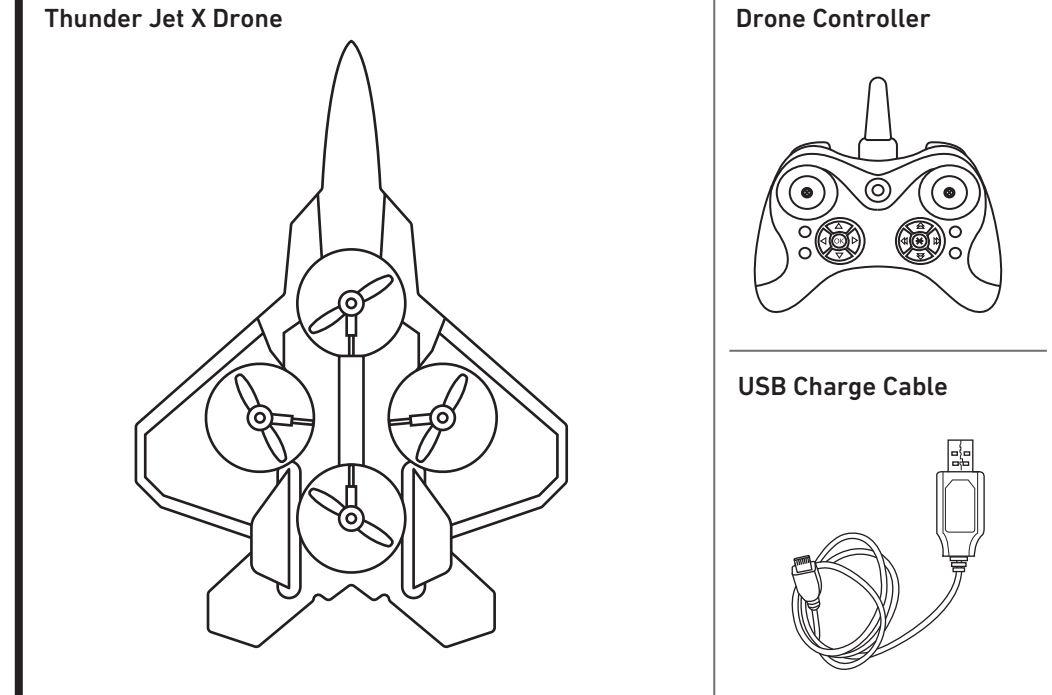
Before calling please locate the 10-digit code printed on the back of your remote

3

### CONTENTS

Printed in China

#### INSIDE THE BOX

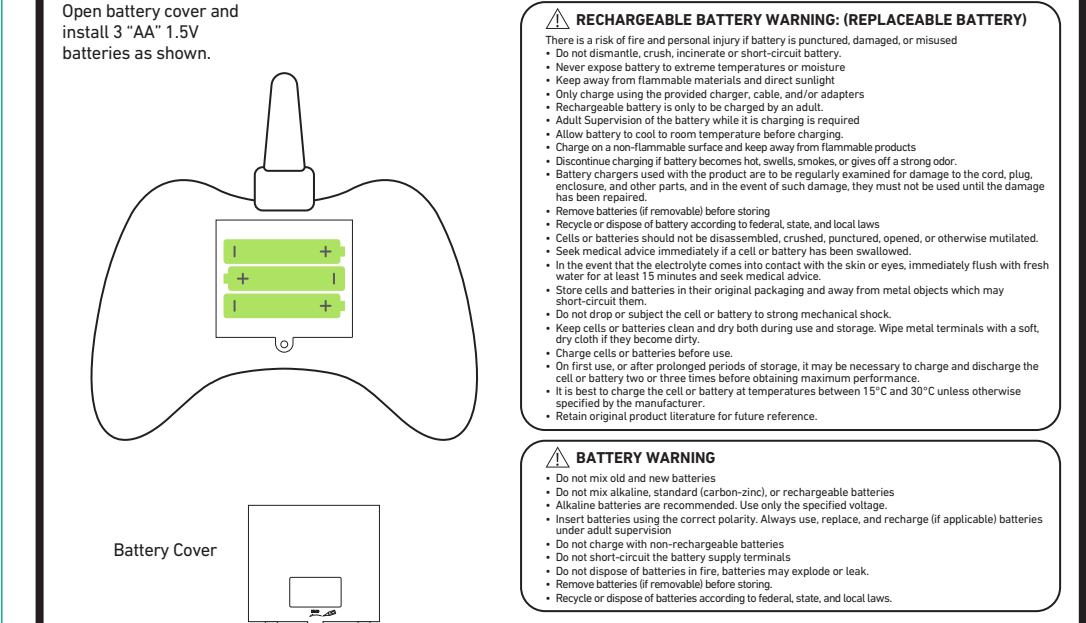


4

### CHARGING/BATTERY

Printed in China

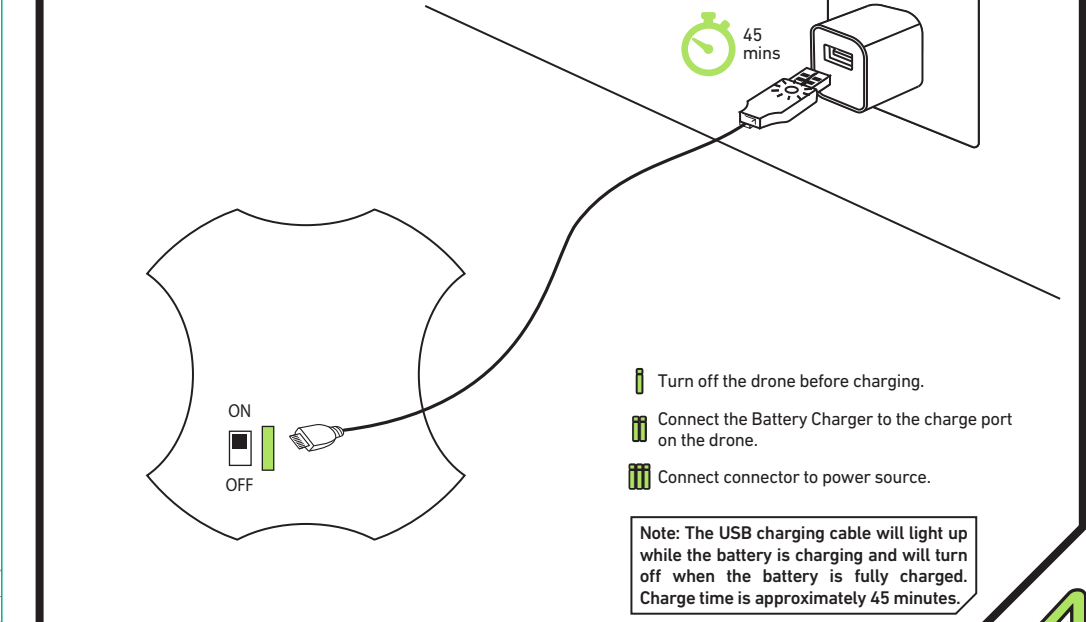
#### REMOTE



**RECHARGEABLE BATTERY WARNING: (REPLACEABLE BATTERY)**  
There is a risk of fire or explosion if battery is incorrectly disposed, damaged or misused.  
• Do not disassemble, crush, incinerate or short-circuit battery.  
• Never expose battery to extreme temperatures or moisture.  
• Keep away from flammable materials and direct sunlight.  
• Only charge using the provided charger, wires, and/or adapters.  
• Do not charge battery in a fire or get it too hot.  
• Adult Supervision of the battery while it is charging is required.  
• Allow battery to cool to room temperature before charging.  
• Charge on a non-flammable surface and keep away from flammable products.  
• Before charging, inspect the terminals for any damage or signs of corrosion. Do not charge battery with any other parts, use in the event of such damage, they must not be used until the damage has been repaired.  
• Remove batteries if removed before storing.  
• Recycle or dispose of battery according to federal, state, and local laws.  
• Cells or batteries should not be disassembled, crushed, punctured, opened, or otherwise mutilated.  
• Seek medical advice immediately if a cell or battery has been swallowed. • Immediately flush with water for at least 15 minutes and seek medical advice.  
• Store cells and batteries in their original packaging and away from metal objects which may short-circuit them.  
• Do not store or subject the cell or battery to strong mechanical shock.  
• Keep cells and batteries cool and dry both during use and storage. Wipe metal terminals with a soft, dry cloth if they become dirty.  
• Charge cells or batteries before use.  
• Do not use, or after prolonged periods of storage, if they are necessary to charge and discharge the cell or battery, use and test the battery before attempting to use the equipment.  
• If the cell or battery is not used for a long time, store them between 15°C and 20°C unless otherwise specified by the manufacturer.  
• Refer original product literature for future reference.

**BATTERY WARNING**  
• Do not use old and new batteries.  
• Do not mix alkaline, standard carbon-zinc, or rechargeable batteries.  
• Recharge batteries and reinsert them in the specified storage.  
• Do not use batteries with different capacities, brands, types, and/or recharge if applicable batteries under full load operation.  
• Do not charge with non-rechargeable batteries.  
• Do not charge with non-rechargeable batteries.  
• Do not short-circuit the battery supply terminals.  
• Do not dispose of batteries in fire, batteries may explode or leak.  
• Recycle batteries in accordance with recycling.  
• Recycle or dispose of batteries according to federal, state, and local laws.

#### DRONE

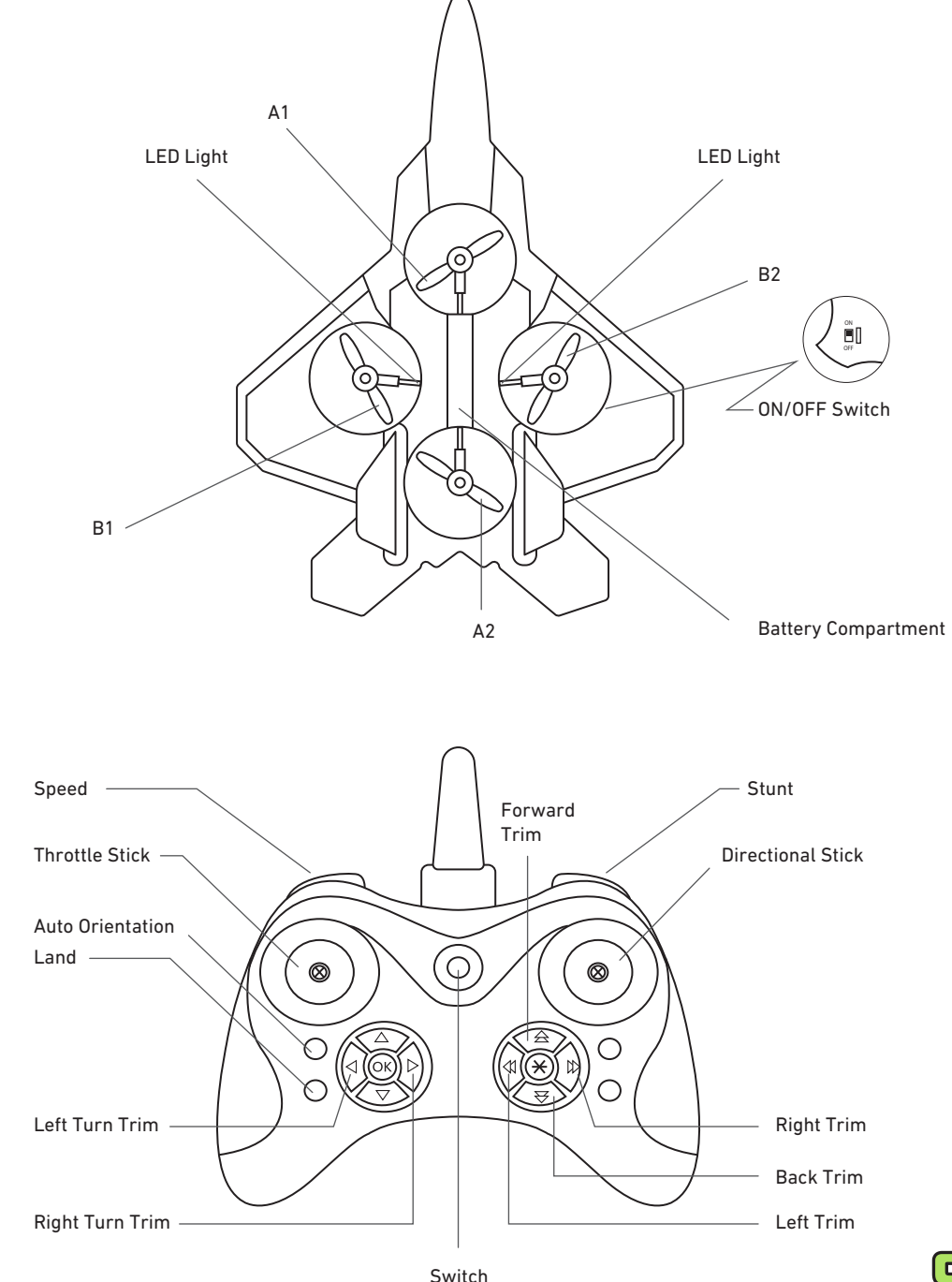


Turn off the drone before charging.  
Connect the Battery Charger to the charge port on the drone.  
Connect connector to power source.  
Note: The USB charging cable will light up while the battery is charging and will turn off when the battery is fully charged. Charge time is approximately 45 minutes.

5

### OVERVIEW

Printed in China



5