

EUT Internal Photos

Figure 15
MDT2 BLE (with CE Version), Internal View (Removed Battery Cover)

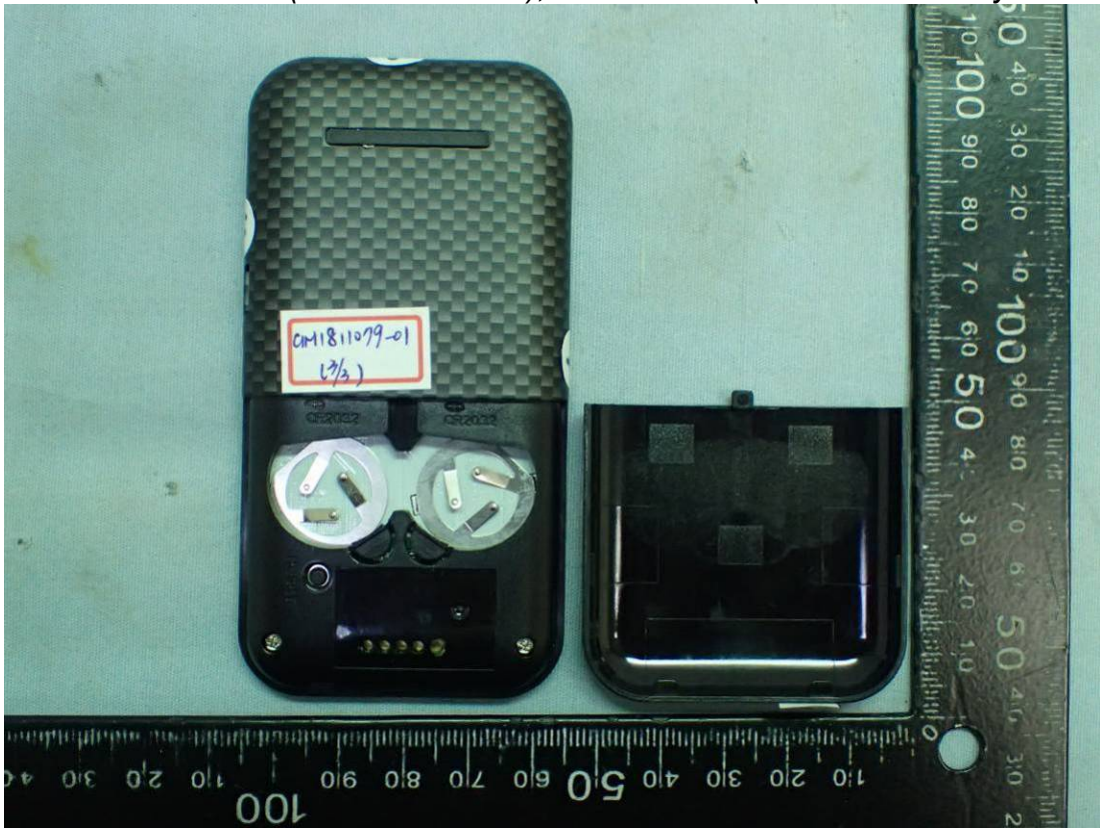


Figure 16
MDT2 BLE (with CE Version), Internal View (Removed Cover)

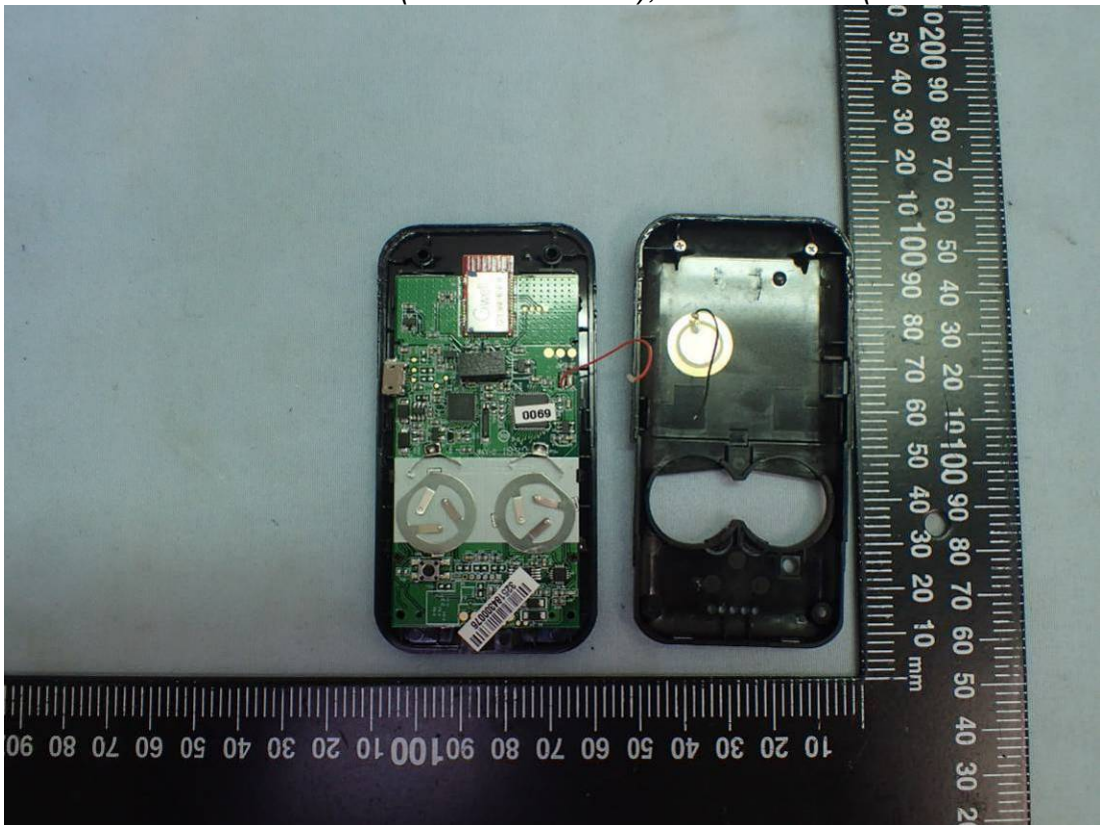


Figure 17
MDT2 BLE (with CE Version), Internal View (Removed Main Board)

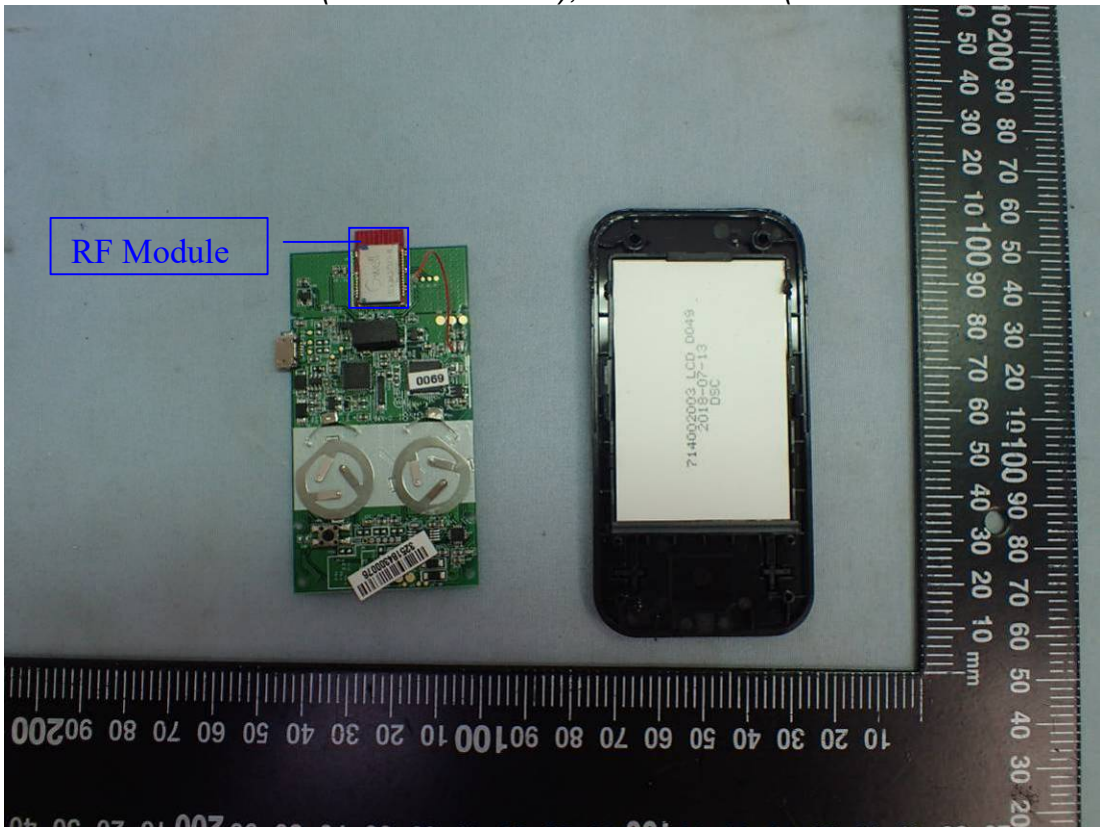


Figure 18
MDT2 BLE (with CE Version), Internal View (Removed Display)

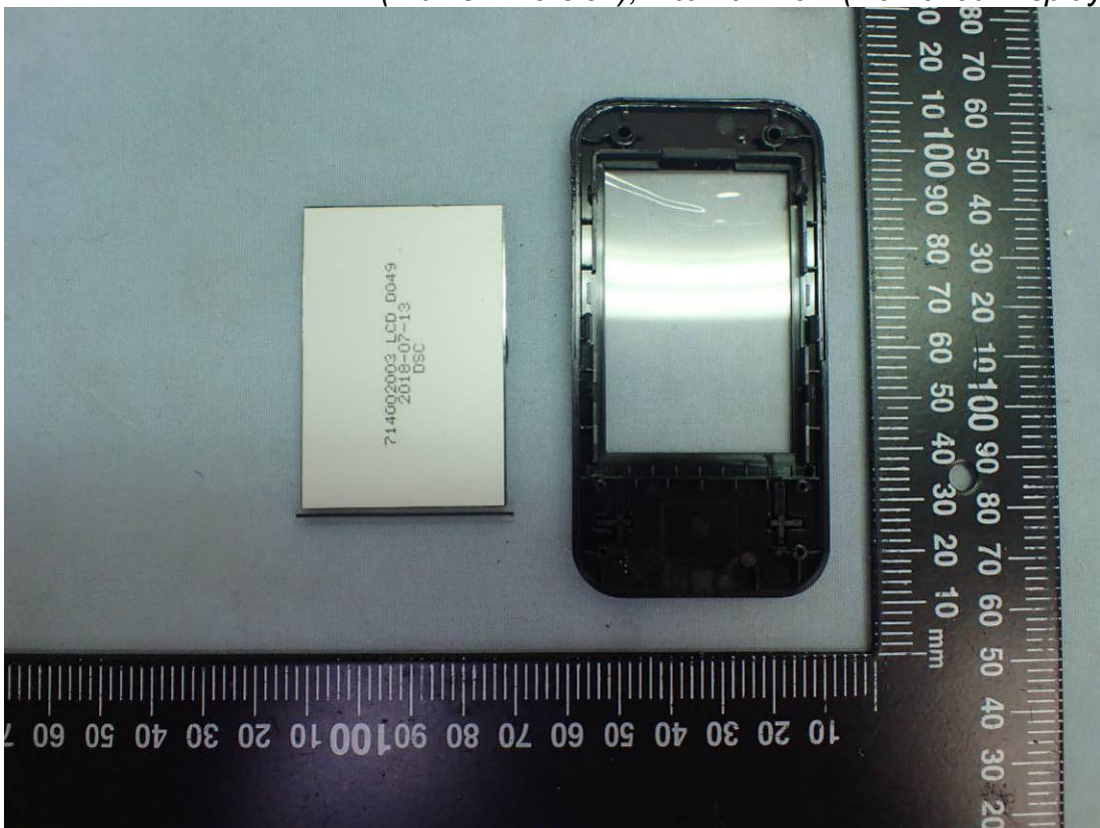


Figure 19
MDT2 BLE (with CE Version), Internal View (Display/Front View)

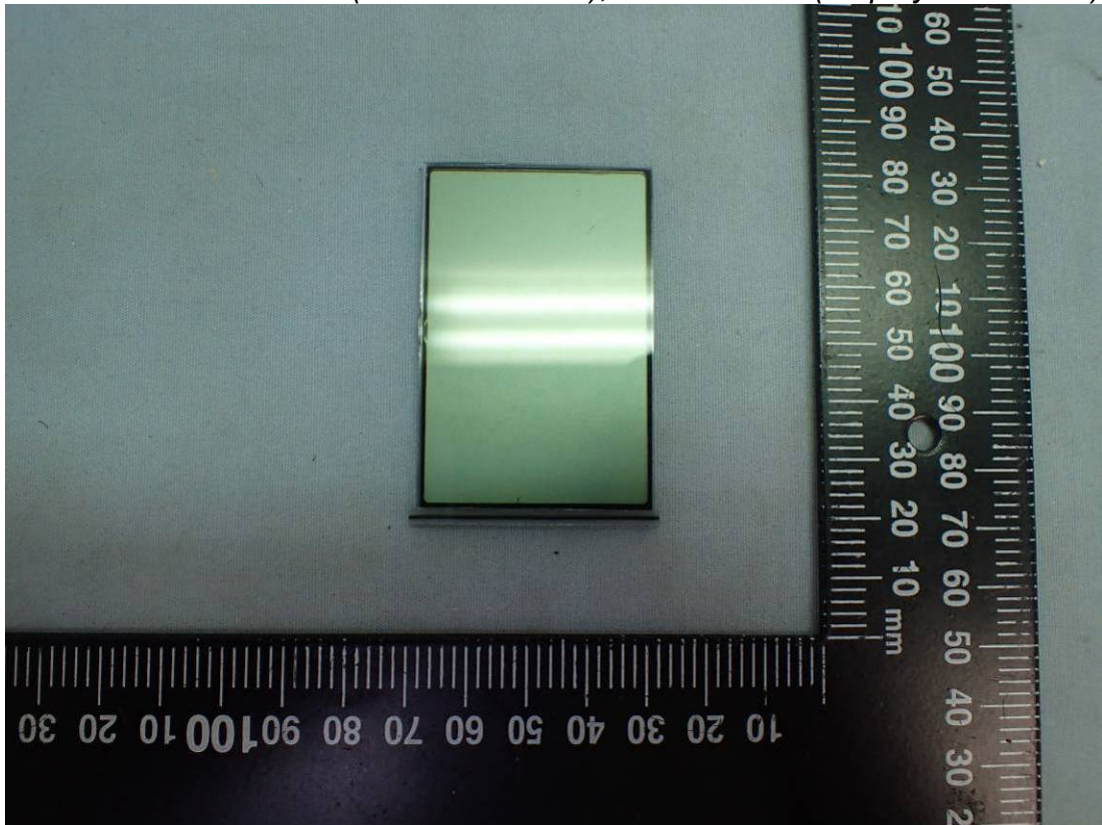


Figure 20
MDT2 BLE (with CE Version), Internal View
(Main Board, Front View, Removed RF Module)

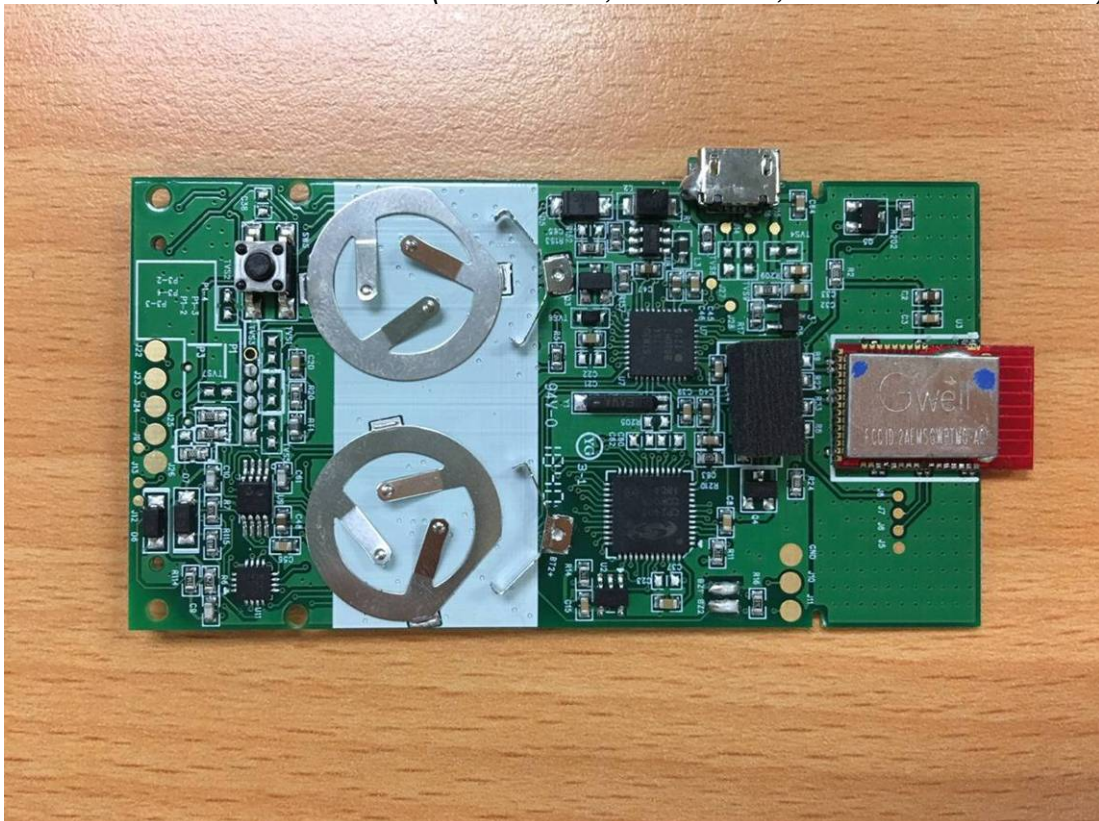


Figure 21
MDT2 BLE (with CE Version), Internal View
(Main Board, Front View, Removed RF Module)

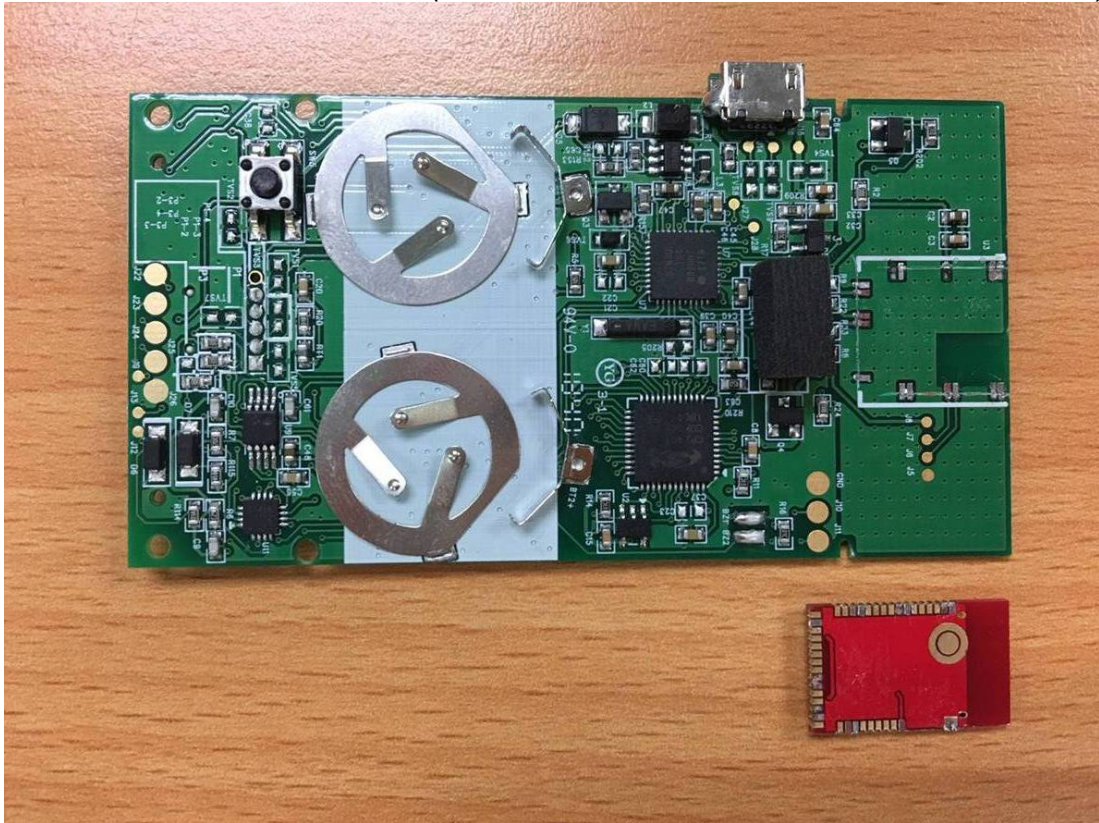


Figure 22
MDT2 BLE (with CE Version), Internal View (Main Board, Back View)

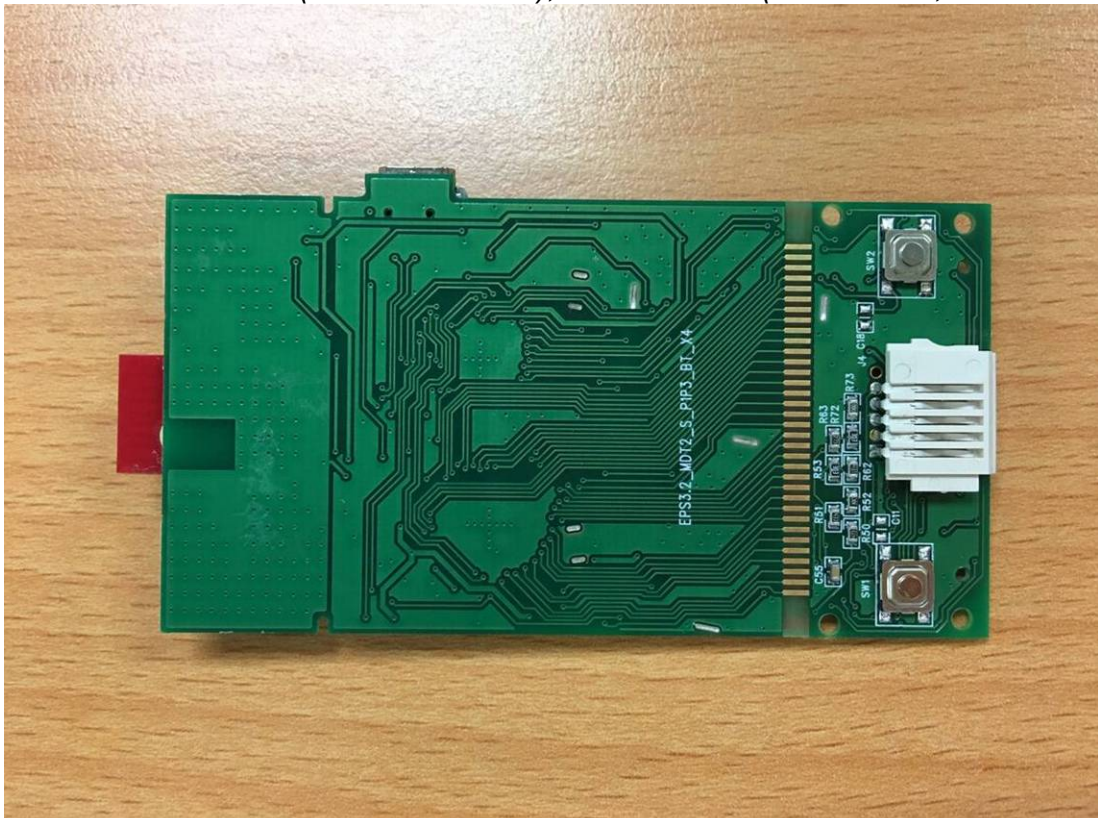


Figure 23
MDT2 BLE (with FDA Version), Internal View (Removed Battery Cover)

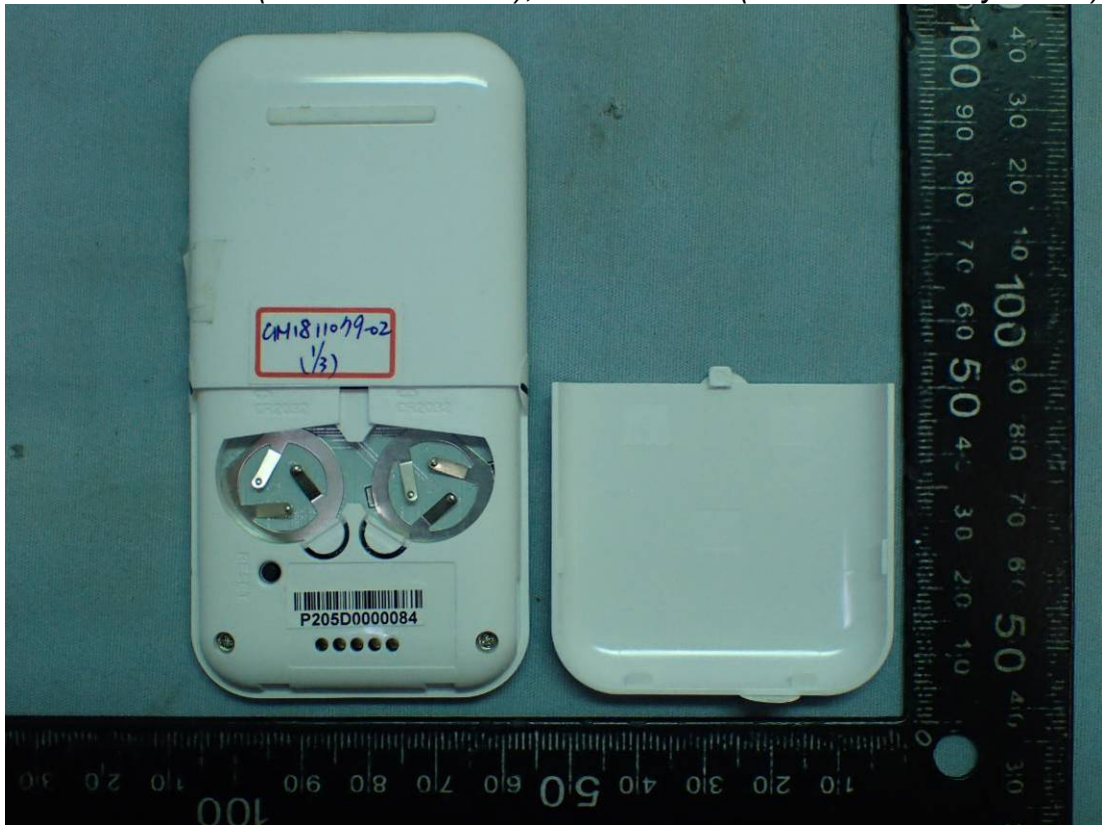


Figure 24
MDT2 BLE (with FDA Version), Internal View (Main Board, Front View)

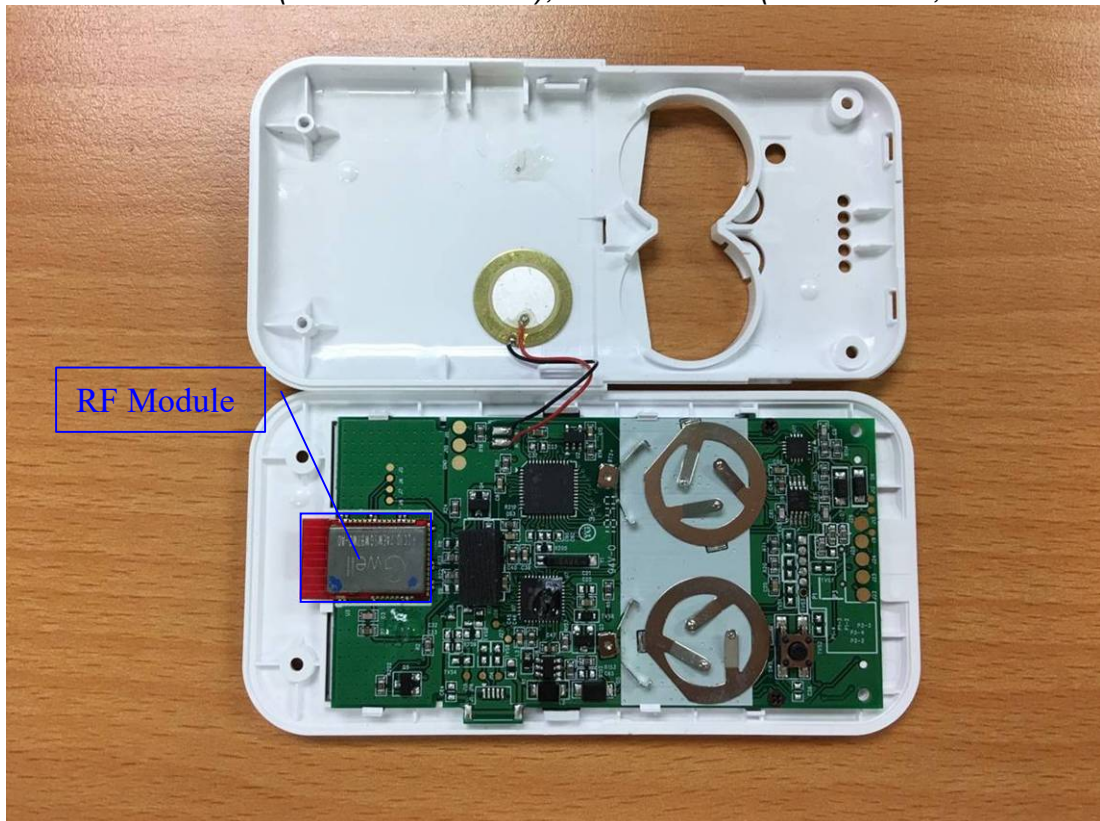


Figure 25
MDT2 BLE (with FDA Version), Internal View (Main Board, Back View)



Figure 26
Internal View (RF Module, Front View)

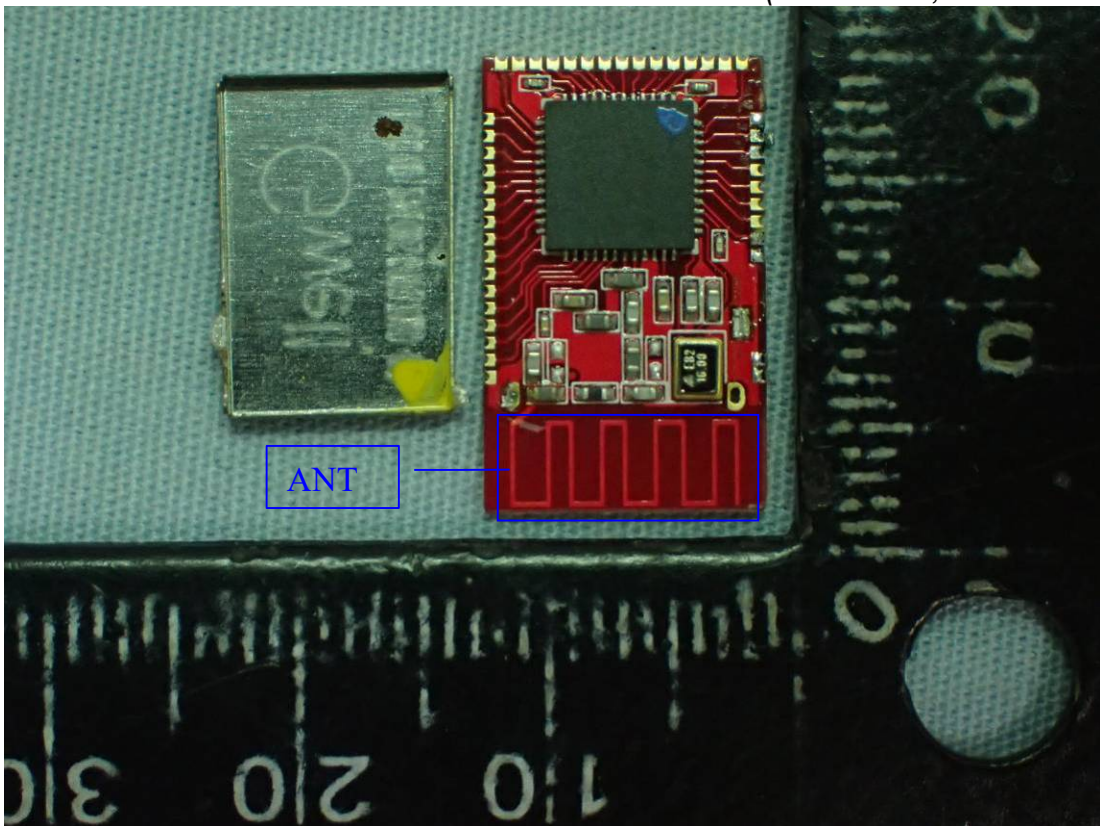


Figure 27
Internal View (RF Module, Back View)

