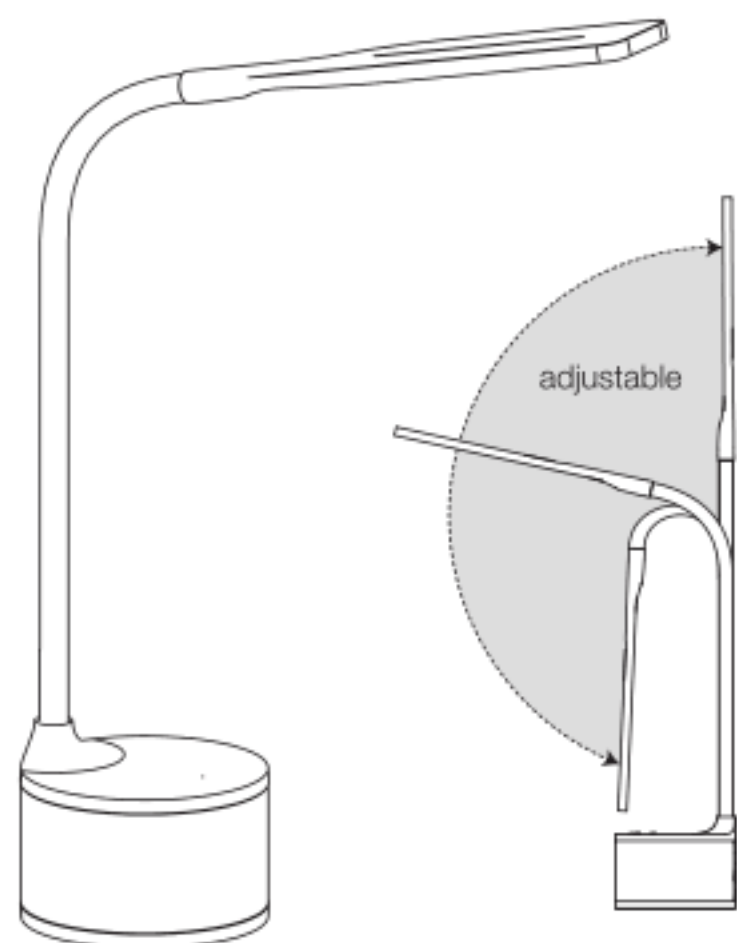




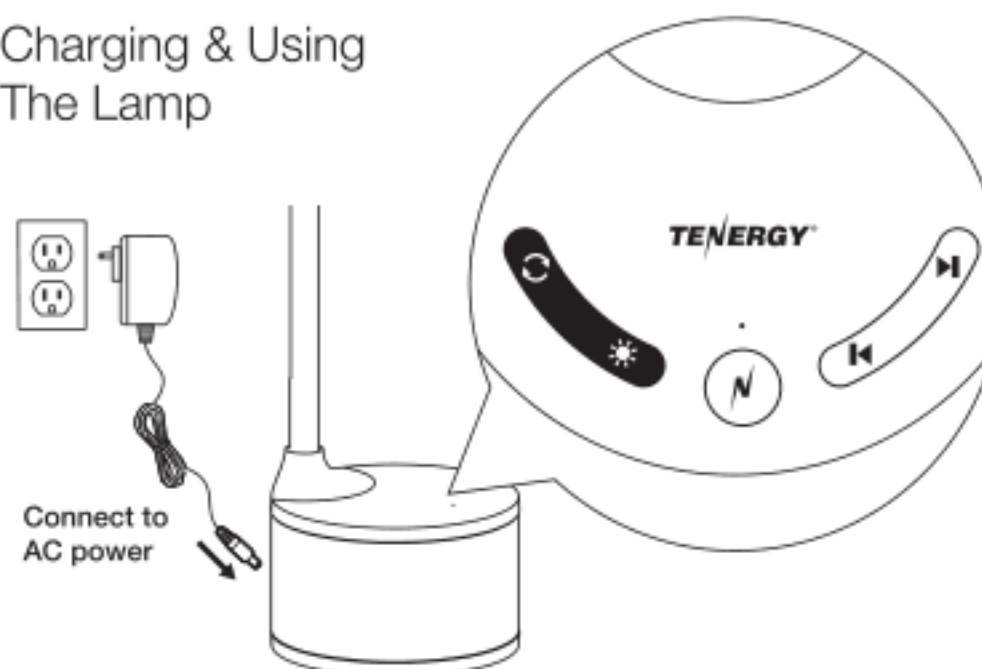
LED Desk Lamp with Bluetooth Speaker

Welcome Guide

At a Glance



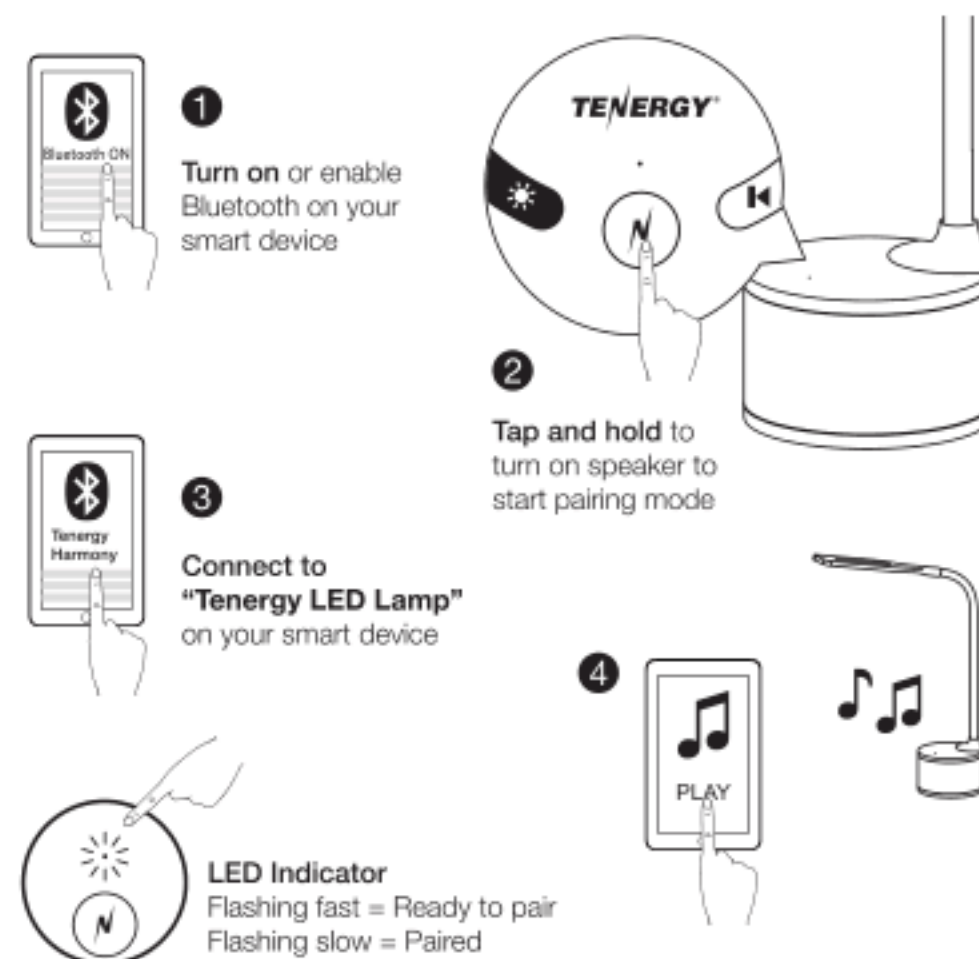
Charging & Using The Lamp



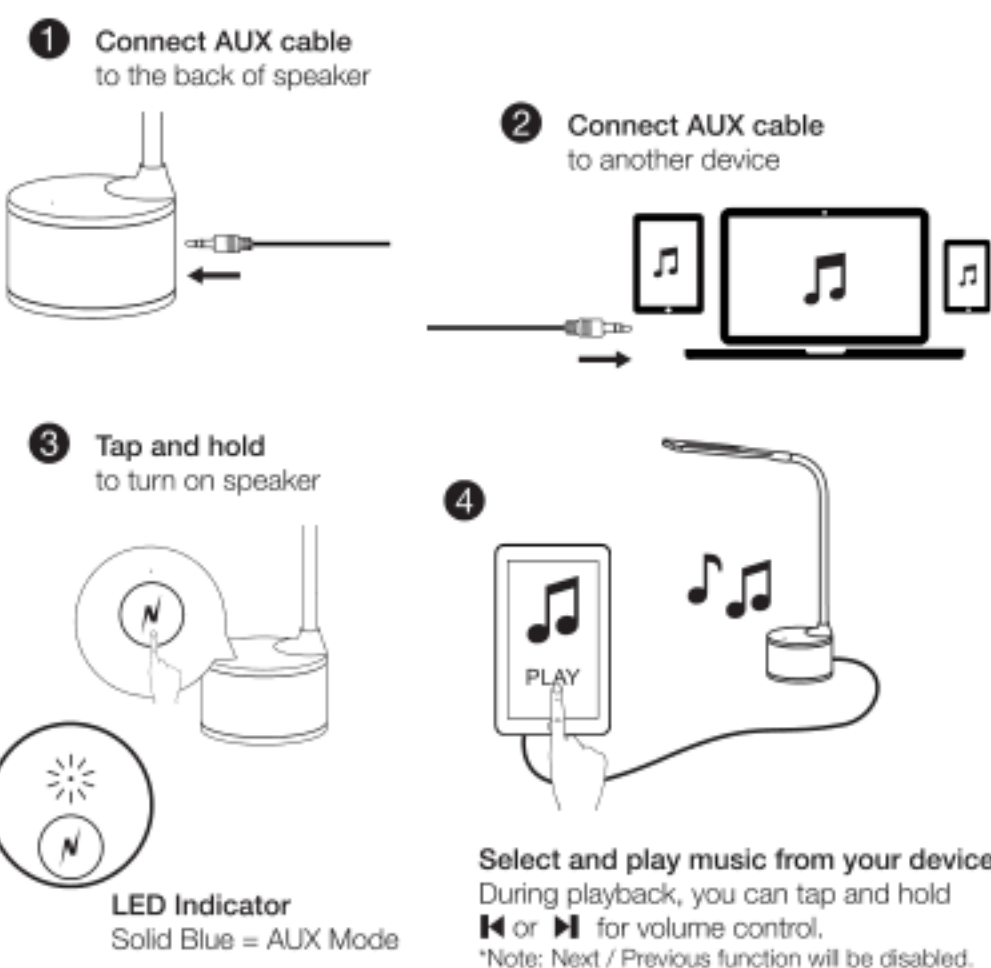
*Will operate for up to 6 hours per battery charge.



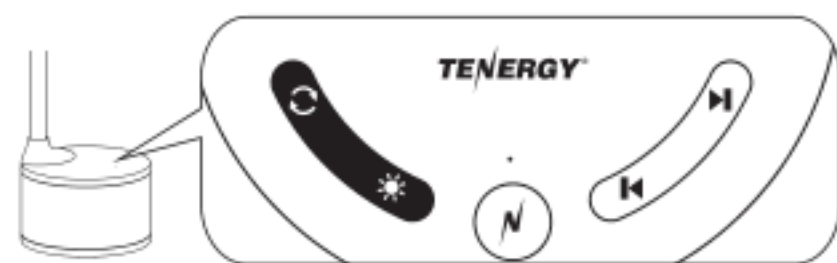
Using The Bluetooth Speaker | Pairing



AUX Mode



Controlling The Speaker



Turn On / Off Speaker : Tap and hold

Play / Pause : Tap once

Activate Google Assistant / Siri : Tap twice

Answer Calls / End Calls : Tap once

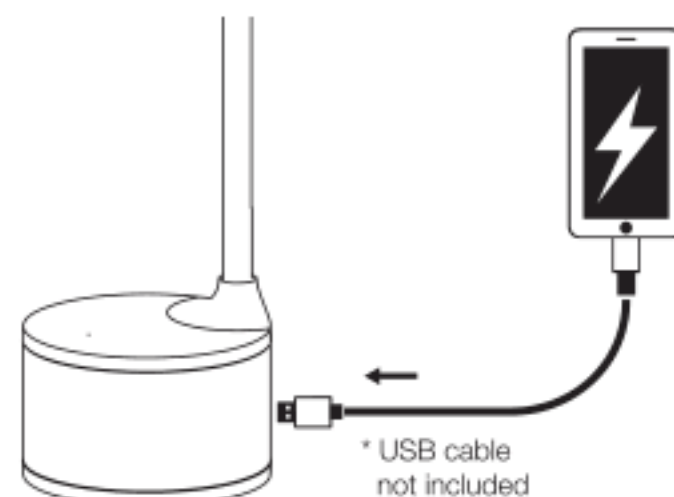
Next / Previous Song : Tap once
(Feature not available in AUX mode)

Volume Up / Down : Tap and hold

Note:

- Bluetooth will be disabled when AUX cable is connected.
- When paired to a device, press and hold the speaker button will return speaker back to pairing mode and ready to pair with another device.

Charging Another USB Device



For Optimal Use:
To ensure complete safety and best performance, use your original MFi cable or a third-party certified one (such as MFi).

Works With Google Assistant

Your Smart LED Desk lamp with Google Assistant. Enjoy entertainment while staying connected and manage different aspects of your day. Seamlessly, transition from looking at your phone to voice command options through our Smart Beanie.

For more information on what your Google Assistant can do, visit: <https://assistant.google.com/platforms/phones>

Use your Google Assistant

Talk to Google Assistant : Double Press speaker button
Stop Google Assistant : Double Press speaker button again

Note:

- 1. Google Assistant isn't available in all languages and countries.
- 2. Google Assistant is available on eligible Android devices. To check if your Android device is compatible with the Google Assistant, visit: <https://support.google.com/assistant>

NOTE: This equipment has been tested and found to comply with the limits for a Class B digital device, pursuant to part 15 of the FCC Rules. These limits are designed to provide reasonable protection against harmful interference in a residential installation. This equipment generates uses and can radiate radio frequency energy and, if not installed and used in accordance with the instructions, may cause harmful interference to radio communications. However, there is no guarantee that interference will not occur in a particular installation. If this equipment does cause harmful interference to radio or television reception, which can be determined by turning the equipment off and on, the user is encouraged to try to correct the interference by one or more of the following measures:

- Reorient or relocate the receiving antenna.
- Increase the separation between the equipment and receiver.
- Connect the equipment into an outlet on a circuit different from that to which the receiver is connected.
- Consult the dealer or an experienced radio/TV technician for help

Changes or modifications not expressly approved by the party responsible for compliance could void the user's authority to operate the equipment.

This device complies with Part

15 of the FCC Rules. Operation is subject to the following two conditions:

- (1) this device may not cause harmful interference, and
- (2) this device must accept any interference received, including interference that may cause undesired operation.

RF Exposure Warning Statements:

This equipment complies with FCC radiation exposure limits set forth for an uncontrolled environment. This equipment shall be installed and operated with minimum distance 20cm between the radiator & body.