

# **Quick Start Guide**

## **Ruggedized Tablet PC**

**Model No.: SV-86/SV-86H**

Thank you for choosing our rugged tablet PC. This quick start guide provides an overview of the tablet functions and operations to ease your use in a short time.

## **Contents**

Chapter I - What's included in the package

Chapter II - Safety Precautions

Chapter III - Start to use

- Key Layout and Definitions
- Power On
- Power off (shut down) / sleep / restart
- Connecting to a WiFi network

Chapter IV - Get familiar to Windows

- Initial setup
- Start screen tiles customization
- The Windows 10 Interface

Chapter V – Special Function Module

Chapter VI – Accessories

## **Chapter I What's included in the package**

- The rugged tablet
- Active stylus pen
- USB cable
- OTG cable
- Power adapter
- Hand strap

Remarks: The accessories supplied in the package may varies depending on your region or service provider.

## **Chapter II Safety Precautions**

- 1, A third party power adapter may cause battery explosion danger. Be sure to use the original battery supplied in the box.
- 2, Please always back up your important data. The manufacturer shall not take responsibility for data missing due to accident, or during hardware & software maintenance.
- 3, Please use the tablet in recommended temperature range, which is from -15 ~ 55 celsius.
- 4, Do not operate the tablet in environment with extreme electrostatic fields or magnetic fields. The LCD panel could be damaged in extreme electrostatic fields or magnetic fields.
- 5, Do not disassemble the tablet. We don't provide warranty for disassembled items.
- 6, if the tablet is dropped into water or other non-corrosive liquids, please check the ports immediately. If all ports are sealed perfectly in position, you can use clean and dry cloth to wipe off water and continue to use the tablet.

## **Chapter III - Start to use**

- **Key Layout and Definitions**



- ① **Function button**:scan button (when tablet comes with barcode scanner)
- ② **Power button**:to start or close touch screen panel. You can also let the computer sleep or wake up from hibernation mode
- ③ ④ **voice sound -/ voice sound+**:reduce / increase the volume
- ⑤ **One-dimensional code scanner/ two-dimensional code scanner**:to support one / two-dimensional code scanning
- ⑥ **Mini SIM Card**: for installing SIM card (Pls check with your service provider about the compatible bands)
- ⑦ **TF Card**: Support TF card
- ⑧ **The docking interface**: to support docking station
- ⑨ **Charging**: charging the tablet via DC adapter
- ⑩ **USB drive** :Full Size USB
- ⑪ **MICRO USB**:Micro USB

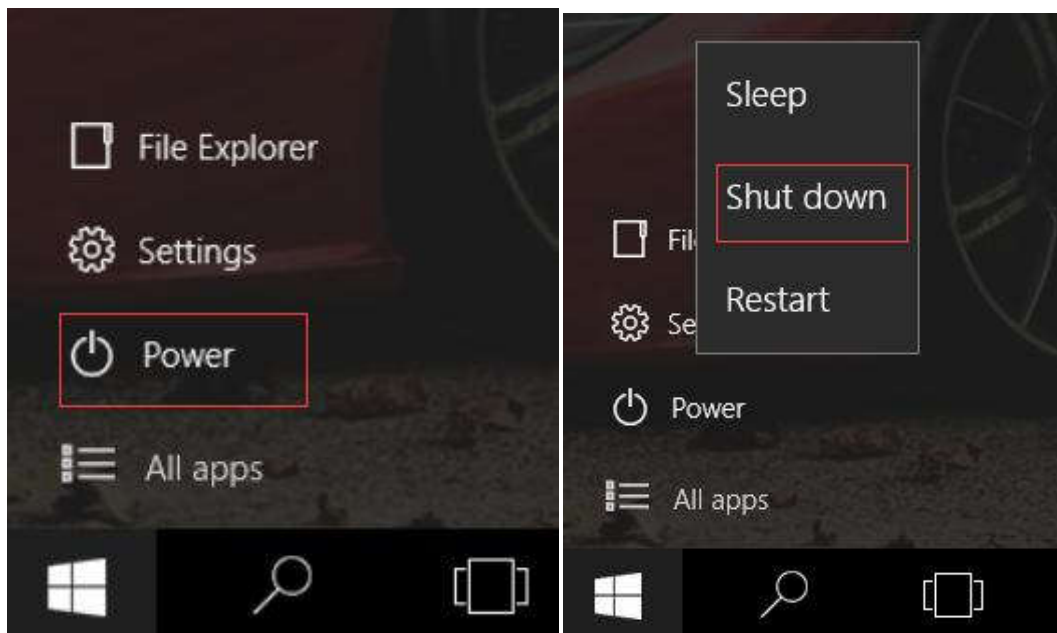
- ⑫ **HDMI:** High-Definition Multimedia, Interface, high definition multimedia interface
- ⑬ **Earphone Jack:** the jack support outputs the audio signal to a loudspeaker or Headset
- ⑭ **Front Camera:** camera, video
- ⑮ **Indicator light:** used for starting and charging instructions
- ⑯ **Light sensor:** Light sensor for automatic control of LCD brightness

- **Power On**

Press and hold the power button to turn on the device

- **Power off (shut down) / sleep / restart**

Click on the windows symbol on the left bottom corner of the screen. Touch the power button, select & touch Sleep / Shut down / Restart.



Also you can press and hold the power button for about 2~6seconds till the screen slide to "Shut down your PC" appears and then use the touchpad to slide down the screen.

In Shut Down mode, no data will be saved and the tablet will boot to the operation system's main screen the next time it is turned on. If you have entered data, either save it to the internal storage or to the other storage media.

- **Connecting to a WiFi network**

Make sure that you are in a wifi zone.

1, Click on the arrow on the lower right corner and select the wifi icon.

1, select the name of the network you want to connect to, tap on "Connect" and enter a password if required.

Tip:

-To get the correct WiFi password (or settings) for the network, contact the WiFi network provider.

-If you want to connect to this network every time when it's in range, select the "Connect automatically" check box.

## **Chapter IV - Get familiar to Windows**

### **- Initial setup**

The first time you start up your device, the Windows Startup screen will be the first screen displayed. Follow the on-screen instructions on each screen in order to properly use the operation system. We recommend you create a Microsoft account, so you can enjoy more features.

Tip: If the tablet is used by more than one person, it is recommended to create an user account for each person. Every user can set its default parameters to his needs.

### **Microsoft account**

A Microsoft account is an email address and password that you use to sign into Windows. It is free and easy to set up, and you can do with any email address you choose, or get a new email address (for example, you can use an outlook.com, Gmail, or Yahoo address for your Microsoft account). With a Microsoft account, you can:

- Get apps from the Windows Store
- Link your social networking accounts to the people app, and you will see your friend's contact info and status updates in one place.

For detailed information about how to use Windows 10, please visit:

<http://windows.microsoft.com/en-us/getstarted-get-to-know-windows-10>

### **- Start screen tiles customization**

Pinning icons: use the touchpad and the touch pad buttons to select the icon you want to move from your apps list to the start screen.

Moving icons: if you want to move an icon, use the touch pad and the touch pad buttons to select the icon and drag it to where you want to and drop it.

More options for icons: use the touchpad and the right touchpad button to click a tile and show options.

### **- The Windows 10 Interface**

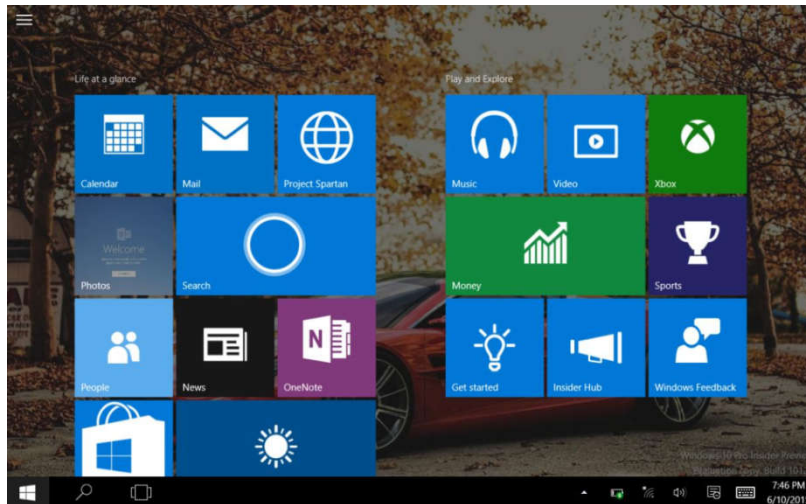
**Windows 10 start image**

---

On the start screen, you can see programs fixed in the image.

These application programs are displayed in the form of magnet. When you click the them, you can easily visit them.

You need to log on your Microsoft Microsoft account before the application program completely runs.



### Screen slide applications

Slide to right

Slide from the left edge of the screen to the right to open the running programs.



Slide to left

Slide from the right edge of the screen to left to enter tablet setting panel.



Slide downward

In start screen, slide from the top of the screen to view all application programs.



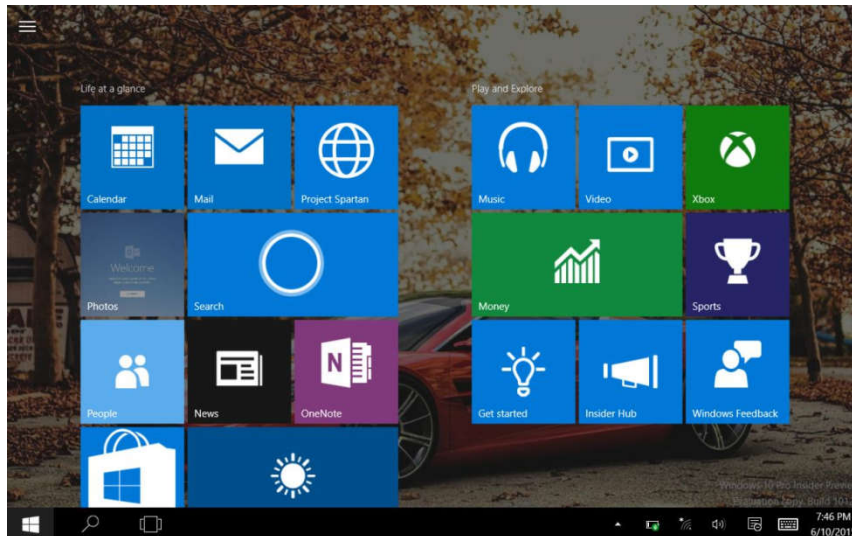
Side with finger

In start screen, slide finger up and down to move the image.

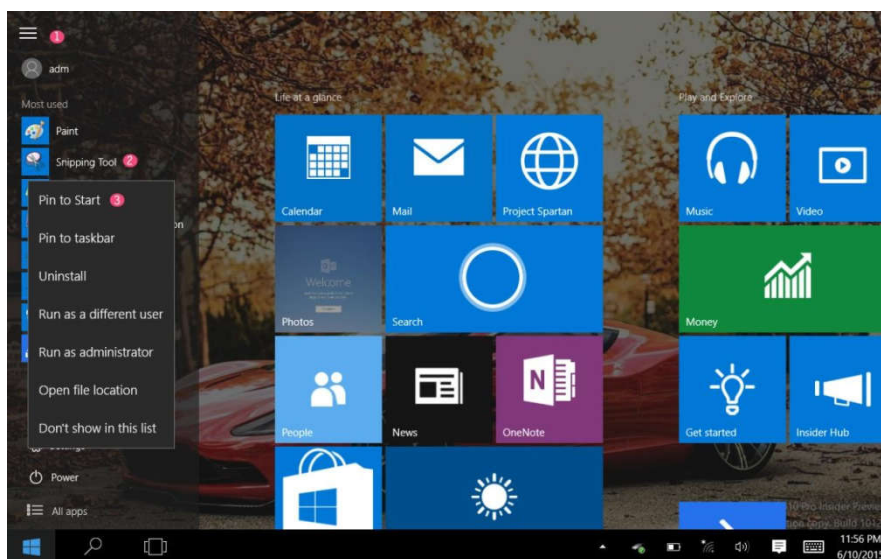




Except for the application programs which are already fixed on the start screen, you can also start other programs in “All apps”.

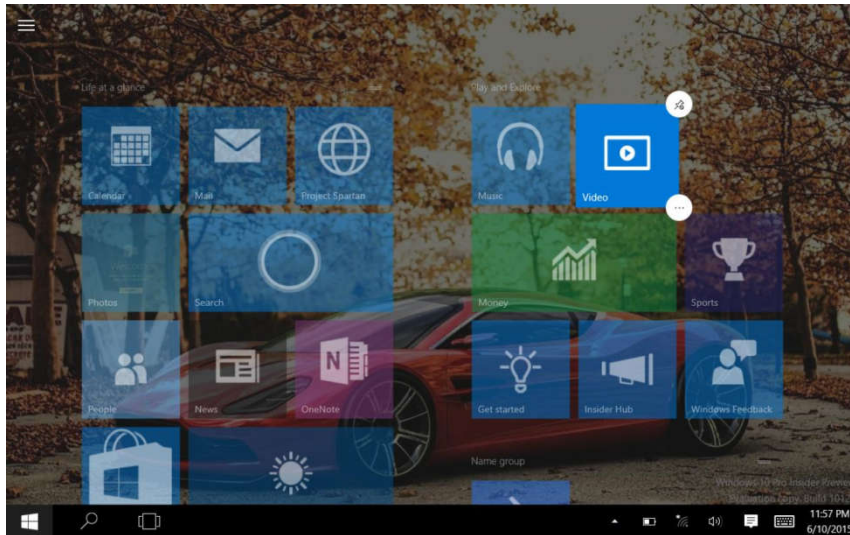


If you want to fix more application programs on the start interface, following the steps in the picture below, (1) click the properties icon; (2) press and hold the application program magnet for about one second and then let go (3) click the pin to start.



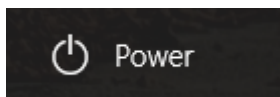
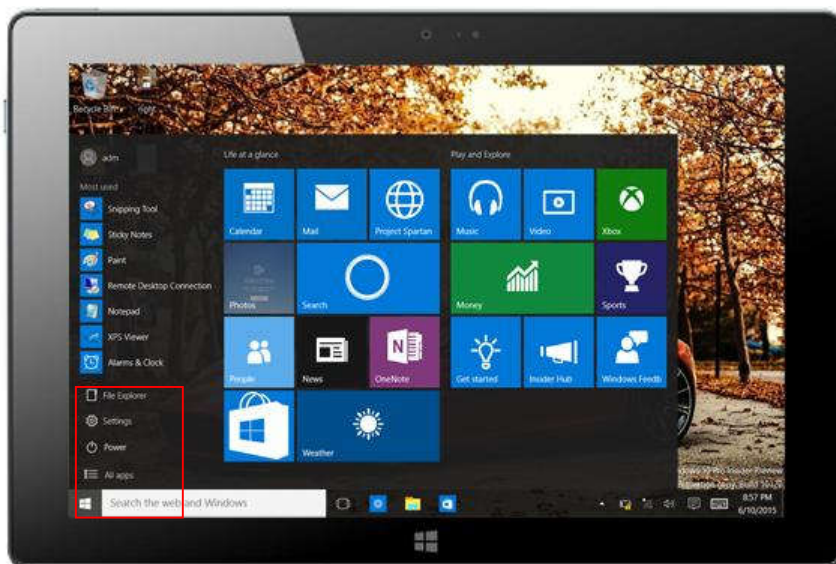
Conversely, if want to cancel or delete a certain application in start screen, (1) lightly touch and hold the application program magnet for about one second, then release. Select the icon in the red box (indicated in the picture).



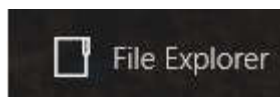


### Charm menu column

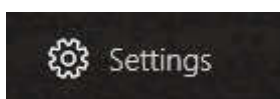
In PC mode, touch start button to start Charm menu column, including: get started, device, set up, share, and search program etc.



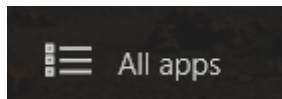
--Sleep / shut down /restart the tablet.



-- Search files and application programs in the tablet



-- Make settings to the tablet



-- For more apps



--Search menu



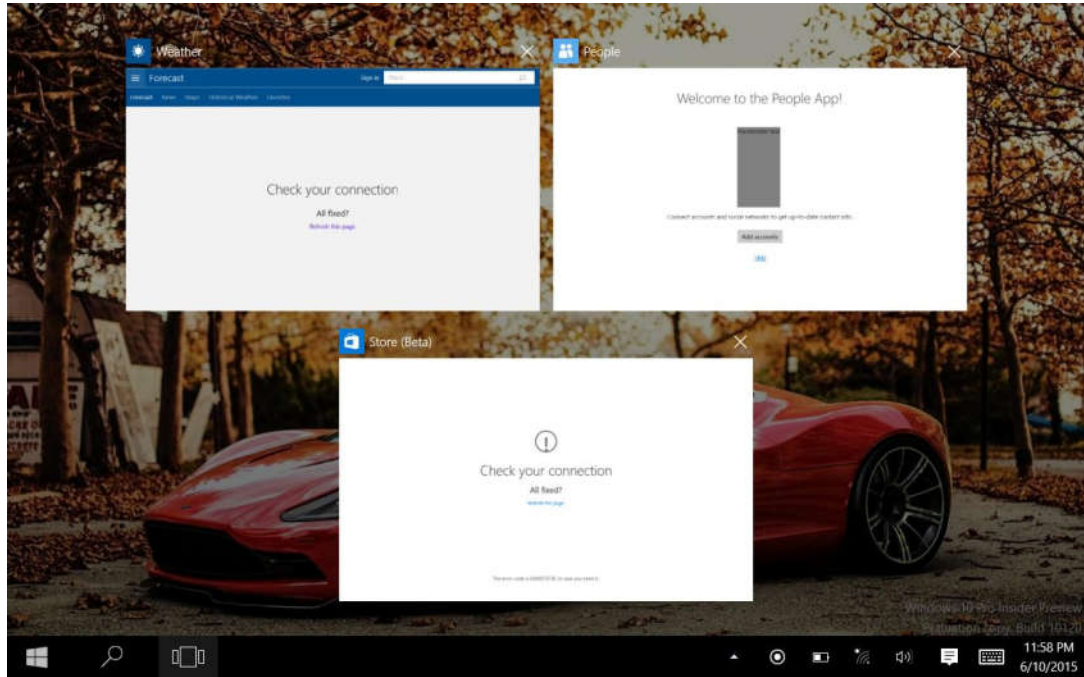
--Device menu



-- Setup menu

### **Multitasking operating interface**

Slide from left of the screen to right, you will see the programs in running. You can enter the program or delete the program.



### Windows notification center

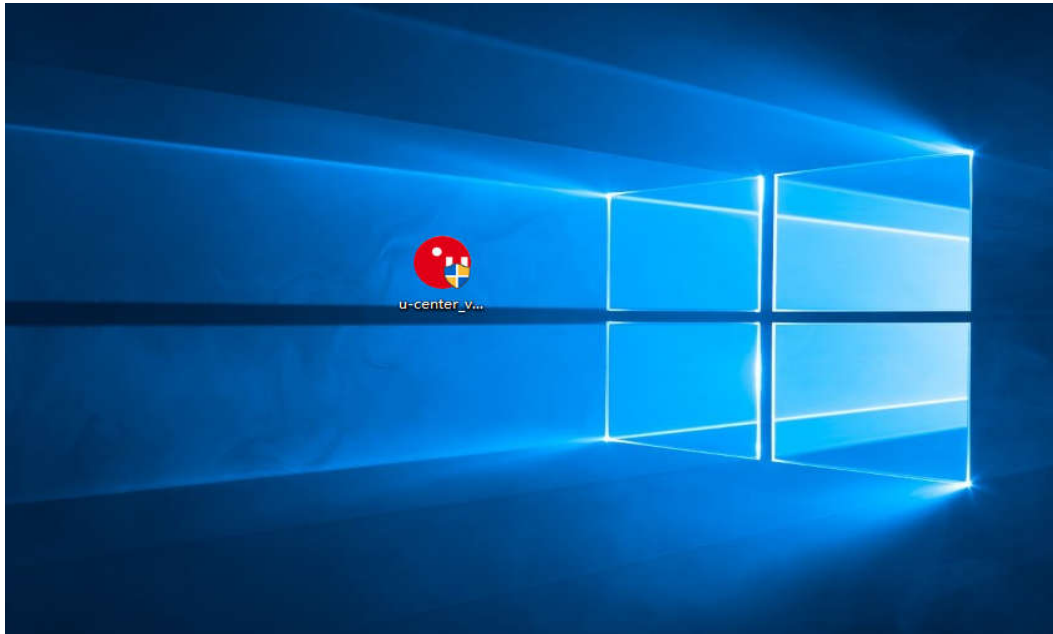
Click the icon in lower right corner of the screen to display the notification center.

- 1 – To change from PC mode to tablet mode
- 2 – To turn on/off the screen rotation
- 3 – To take notes
- 4 – To access all settings
- 5 – To connect other devices
- 6 – To manage the device's battery
- 7 – To make a VPN connection
- 8 – To turn on/off the Bluetooth connection
- 9 – To adjust the screen brightness
- 10 – To turn on/off the WiFi connection
- 11 – To turn on/off the Quiet hours option
- 12 – To turn on/off location services
- 13 – To turn on/off the flight mode

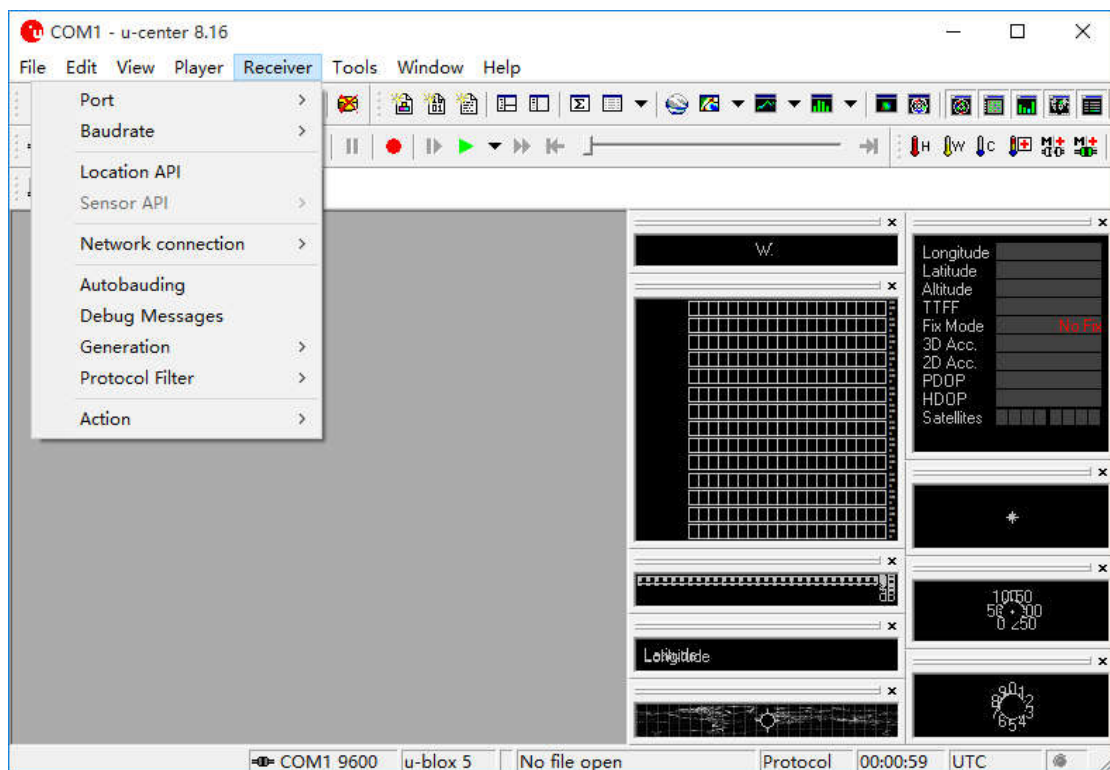
## Chapter V Special Function Module

### U-blox GPS

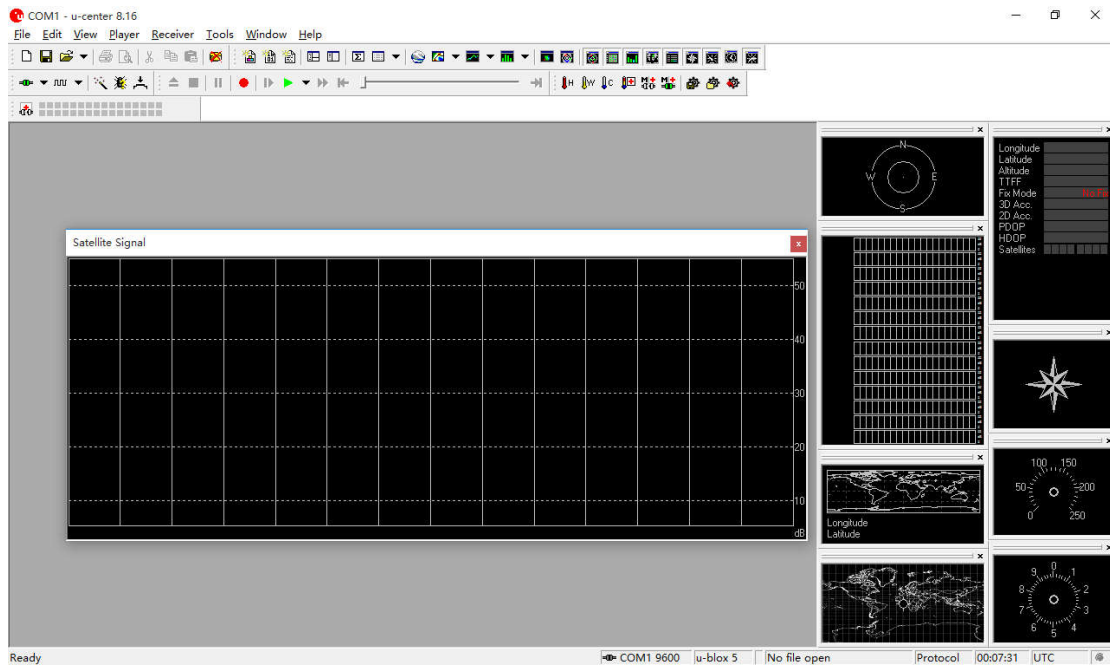
Copy u-blox test tool to desktop.



Open the software, click Receiver => Port => COM1.  
Also set Baudrate as 9600.



Double click the satellites model picture to enlarge.



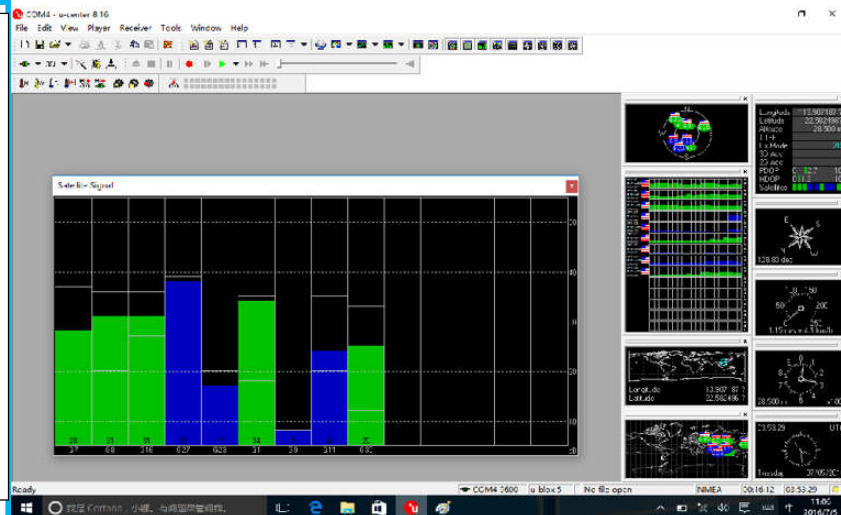
The blue colors are the satellites that searched, green color are effective satellites. The numbers in the right are signal value.

Standard:

Environment: in open field, no metal in around, no obstacles. Sunny weather, no clouds covering.

Condition: can see satellites above 12 pieces, effective satellites above 10 pieces.

Have 2-3 pieces satellites value reach to above 40 dB.



## Chapter VI – Accessories





Remarks: The accessories supplied in the package may varies depending on your region or service provider.

## FCC compliance statement

This device complies with part 15 of the FCC rules. Operation is subject to the following two conditions:

- (1) This device may not cause harmful interference, and
- (2) this device must accept any interference received, including interference that may cause undesired operation.

**Note:** This equipment has been tested and found to comply with the limits for a Class B digital device, pursuant to part 15 of the FCC Rules. These limits are designed to provide reasonable protection against harmful interference in a residential installation.

This equipment generates, uses, and can radiate radio frequency energy and, if not installed and used in accordance with the instructions, may cause harmful interference to radio communications. However, there is no guarantee that interference will not occur in a particular installation.

If this equipment does cause harmful interference to radio or television reception, which can be determined by turning the equipment off and on, the user is encouraged to try to correct the interference by one or more of the following measures:

- Reorient or relocate the receiving antenna.
- Increase the separation between the equipment and receiver.
- Connect the equipment to an outlet on a circuit different from that to which the receiver is connected.
- Consult the dealer or an experienced radio/TV technician for help.

**Important:** Changes or modifications to this product not authorized by Zephyr Sleep Technologies could void the electromagnetic compatibility (EMC) and wireless compliance and negate your authority to operate the product.

This product has demonstrated EMC compliance under conditions that included the use of compliant peripheral devices and shielded cables between system components. It is important that you use compliant peripheral devices and shielded cables between system components to reduce the possibility of causing interference to radios, televisions, and other electronic devices.

### **SAR Statement:**

This device has been tested and meets applicable limits for radio frequency (RF) exposure.

Specific Absorption Rate (SAR) refers to the rate at which the body absorbs RF energy. The SAR limit is 1.6 watts per kilogram in USA that set the limit averaged over 1 gram of tissue. This device (FCC ID: 2AQAC-SV-86H, Contains: FCC ID: XMR201605EC25A) has been tested against this SAR limit. During testing, the device radios are set to their highest transmission levels and placed in positions that simulate uses against the body, with no separation, the highest SAR value reported is 1.156 W / kg. SAR information on this can be viewed on-line at <https://www.fcc.gov/oet/ea/fccid>. Please use the device FCC ID number for search.

Cases with metal parts may change the RF performance of the device, including its compliance with RF exposure guidelines, in a manner that has not been tested or certified.

Although this device has been tested to determine SAR in each band of operation, not all bands are available in all areas. Bands are dependent on your service provider's wireless and roaming networks.



## Canadian regulatory statement

This device complies with Innovation, Science, and Economic Development Canada license-exempt RSS standard(s). Operation is subject to the following two conditions:

- (1) this device may not cause interference, and
- (2) this device must accept any interference, including interference that may cause undesired operation of the device.

Le présent appareil est conforme aux CNR d'Innovation, Sciences et Développement économique Canada applicables aux appareils radio exempts de licence. L'exploitation est autorisée aux deux conditions suivantes : (1) l'appareil ne doit pas produire de brouillage, et (2) l'utilisateur de l'appareil doit accepter tout brouillage radioélectrique subi, même si le brouillage est susceptible d'en compromettre le fonctionnement.  
CAN ICES-3 (B)/NMB-3(B)

### **SAR Statement:**

This device has been tested and meets applicable limits for radio frequency (RF) exposure.

Specific Absorption Rate (SAR) refers to the rate at which the body absorbs RF energy. The SAR limit is 1.6 watts per kilogram in Canada that set the limit averaged over 1 gram of tissue. This device (IC: 24060-SV86H, Contains: IC: 10224A-201611EC25A) has been tested against this SAR limit. During testing, the device radios are set to their highest transmission levels and placed in positions that simulate uses against the body, with no separation, the highest SAR value reported is 1.156 W / kg.

Cases with metal parts may change the RF performance of the device, including its compliance with RF exposure guidelines, in a manner that has not been tested or certified.

Although this device has been tested to determine SAR in each band of operation, not all bands are available in all areas. Bands are dependent on your service provider's wireless and roaming networks.