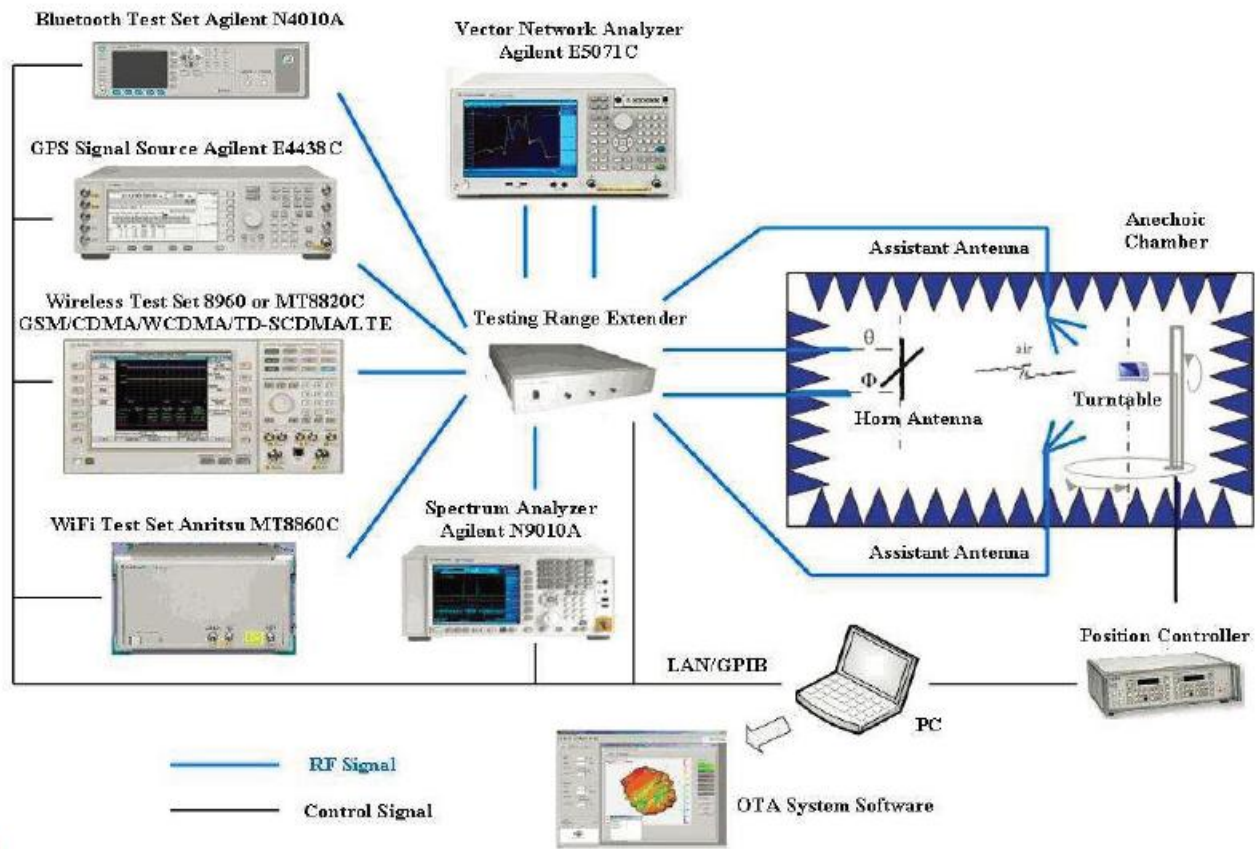


一: Test equipment and conditions:



二:Antenna performance

(1)Antenna performance

1. This approval sheet supports for MID project. FPC antennas include in this project. This report is for the performance of GPS&WIFI&BT antenna.
2. Antenna shape size: Meet the requirement of MID
3. Antenna band: 1570MHz~1580MHz, 2400MHz~2500MHz&5400MHz
4. Antenna material: Antenna material meet the requirement of MID
5. Adhesive performance: Adhesive performance meet the requirement of MID
6. Antenna performance meet the spec below:

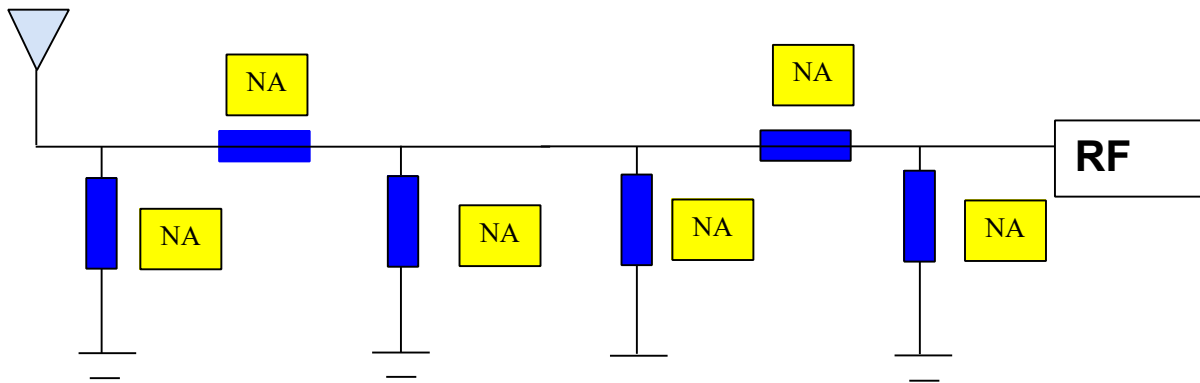
Description	1. 57GHz~1. 58GHz 2. 4GHz~2. 5GHz&5GHz	Units
VSWR	≤2.0	
Average Antenna Gain	≥-4.5	dB
Antenna Efficiency	≥35	%
Feed Impedance	50 ohms	
Operating Temperature	-40 to +85 deg C	
Polarization / Azimuth	Linear / Omni-directional	

(2)Mechanical Information

Mechanical Dimension	
Cable Length	NA
Description	GPS&WIFI&BT antenna
Material	FPC
Coaxial Cable	NA
Environmental	
Operation Temperature	-40 to +85 deg C
Storage Temperature	-40 to +85 deg C

三: Matching circuit

(1)RSS-247



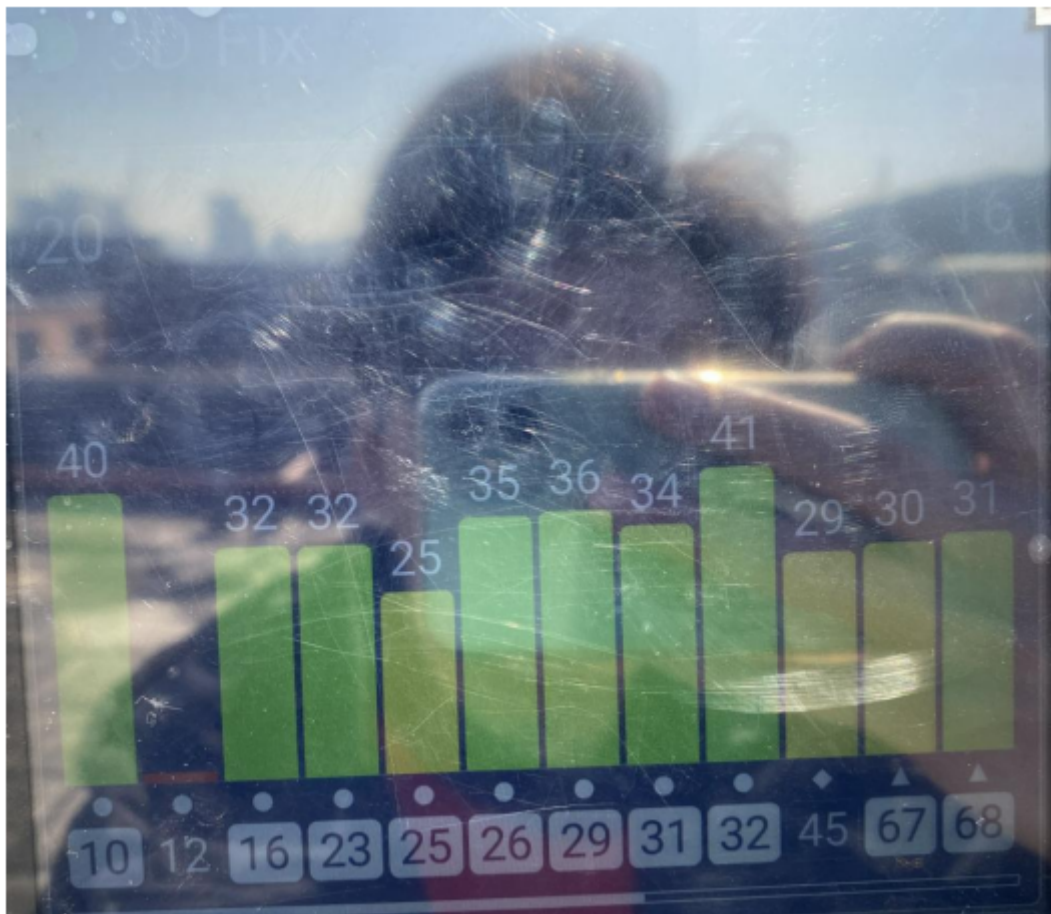


四: Standing wave ratio and Gain



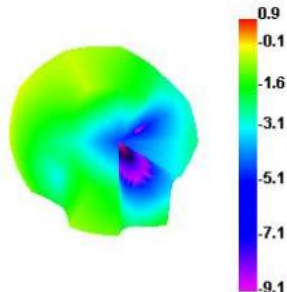
Freq (MHz)	Effi (%)	Gwin (dBi)
2400	48.75	1.26
2450	42.27	1.98
2500	43.05	1.83
5150	52.77	1.29
5350	54.20	1.49
5500	50.12	1.54
5650	51.88	1.02
5750	46.89	1.99
5850	53.05	1.42

Passive Test For GPS			
Freq (MHz)	Effi (%)	Effi (dB)	Gain (dBi)
1570	30.81	-5.11	-0.7
1571	30.62	-5.14	-0.72
1572	30.41	-5.17	-0.75
1573	30.21	-5.2	-0.74
1574	30.03	-5.22	-0.77
1575	29.95	-5.24	-0.77
1576	29.84	-5.25	-0.8
1577	29.71	-5.27	-0.8
1578	29.66	-5.28	-0.79
1579	29.57	-5.29	-0.8
1580	29.48	-5.31	-0.83

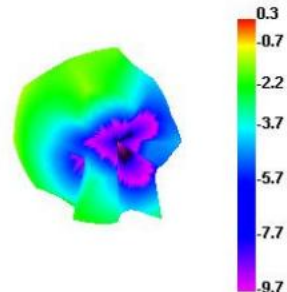


五:3D pattern

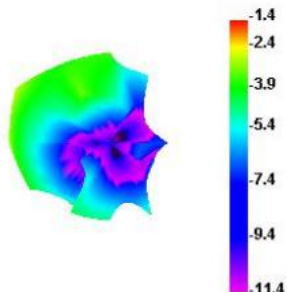
2400.000MHz



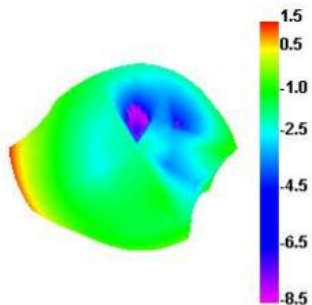
2450.000MHz



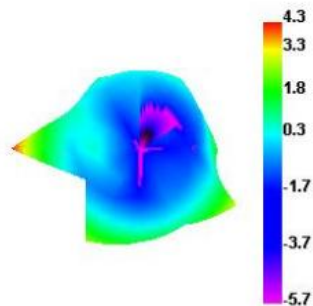
2500.000MHz



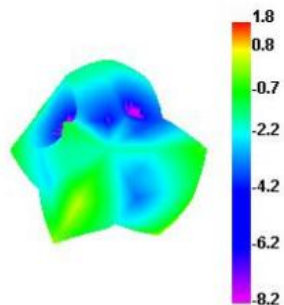
5000.000MHz



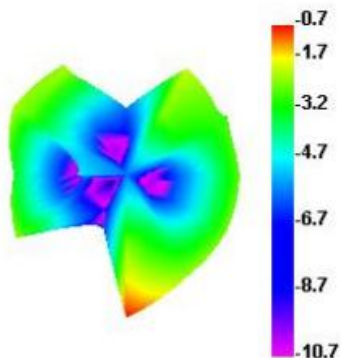
5500.000MHz



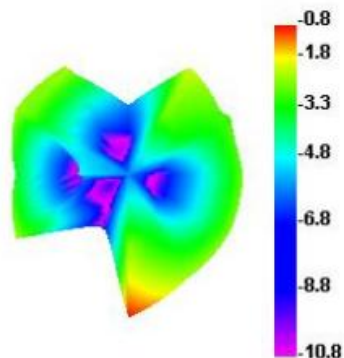
6000.000MHz



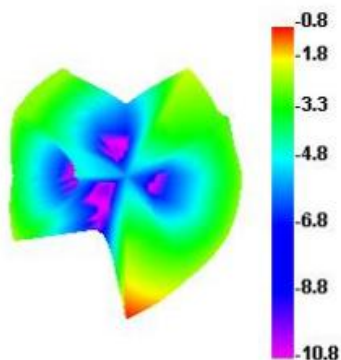
1570.000MHz



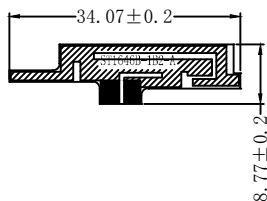
1575.000MHz



1580.000MHz



六: Antenna drawing (mm)



3M300

